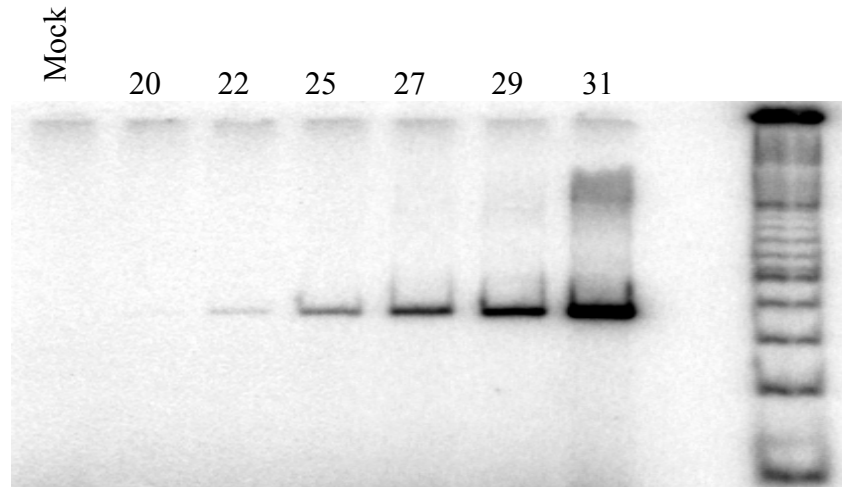
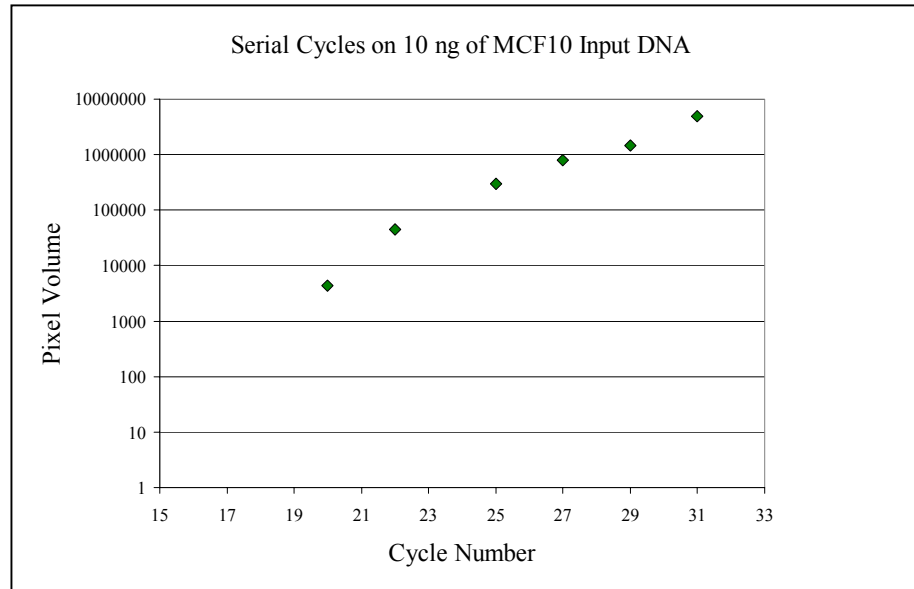


Web Fig. - D



Determination of exponential range of amplification of chromatin immunoprecipitated DNA. Ten nanogram aliquots of MCF10 chromatin immunoprecipitated DNA was amplified using maspin promoter primers and PCR parameters described in Methods. PCR products from varying numbers of cycles were size-separated on a 6% non-denaturing polyacrylamide gel and product yield was determined by phosphor imaging. The top panel shows the resultant log-linear relationship with the exponential phase of the PCR reaction proceeding through 31 cycles. Our measurements were made at 28 cycles, in the middle of the exponential phase. The bottom panel shows a picture of the gel.