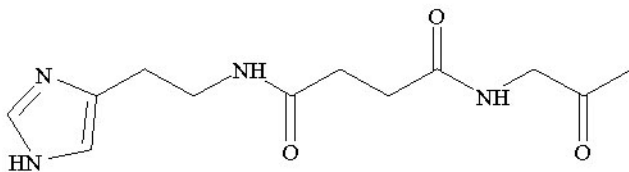


IMP-245: DOTA-Phe-Lys(HSG)-D-Tyr-Lys(HSG)-Lys(Tscg-Cys)-NH₂

Where HSG is histamine-succinyl-glycine,



and DOTA is 1,4,7,10-tetraazacyclodecane-*N, N', N'', N'''*-tetraacetic acid

TscgC is thiosemicarbazonyl-glyoxyl-cysteiny-

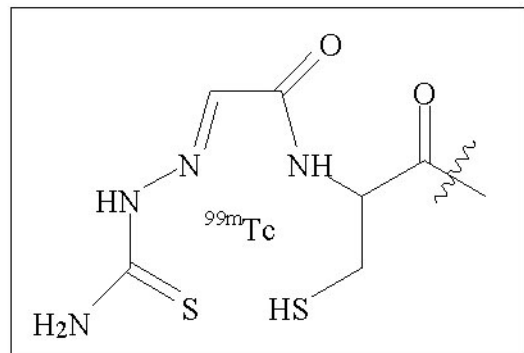


Figure 5S. ^{99m}Tc -IMP-245 bivalent HSG peptide used as the radiotracer for these studies.