

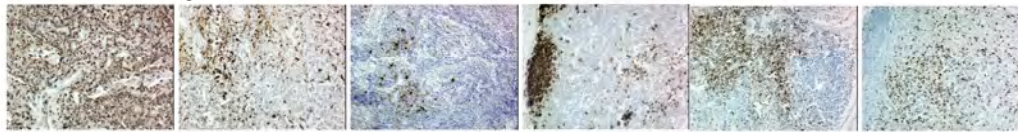
Supplementary Figure 3

a BLT lymph node



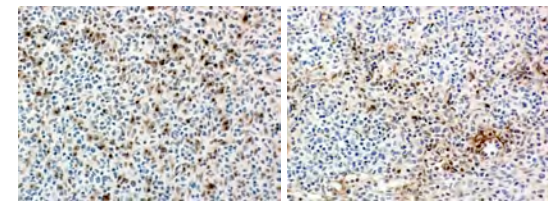
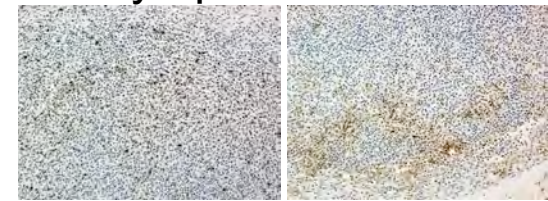
CD45 CD68 CD83 CD20 CD4 CD8

Human lymph node



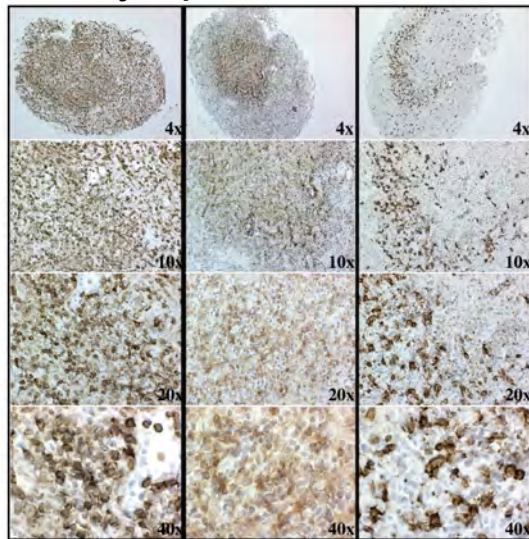
CD45 CD68 CD83 CD20 CD4 CD8

b BLT lymph node



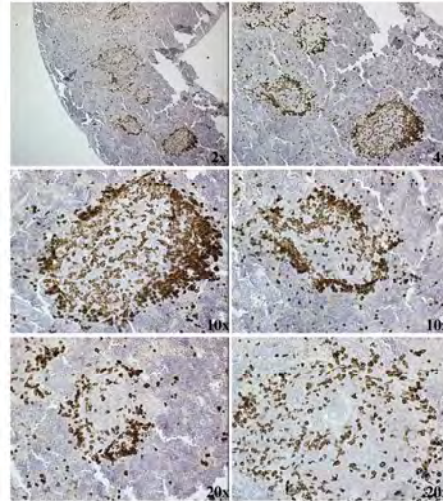
CXCL13 CCL21

c BLT lymph node



CD45 CD4 CD20

d BLT spleen



CD20 CD20

Supplementary Figure 3.

Immunohistological analysis of secondary lymphoid tissues of BLT mice. **a)** Immunohistological staining comparing the human reconstitution of BLT mouse lymph node to human lymph node tissue controls (100x). **b)** Immunohistological staining of BLT lymph node for human CXCL13 and CCL21 (100x top and 200x bottom). **c)** BLT mice were administered sheep red blood cells to induce germinal center formation and lymphoid tissues were analyzed by immunohistochemistry 5 days later. BLT mouse lymph nodes stained with anti-human CD45, CD4 and CD20 showed organization of T and B cells into discrete cellular compartments reminiscent of B and T cell zones. **d)** BLT spleens develop distinct germinal center-like structures.