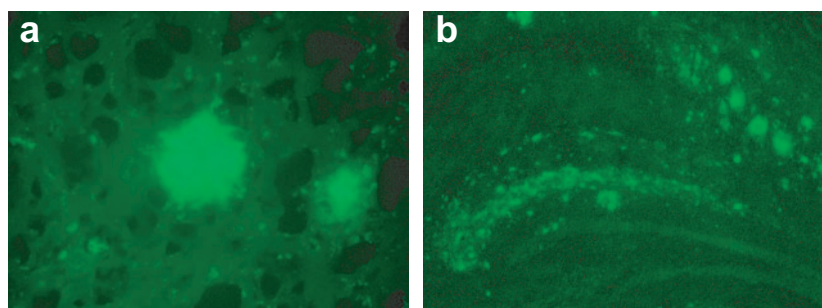


***APP* mouse 710 d**



"Classic" senile plaque Florid plaque deposition

Supplementary Figure 1: Florid A β deposition and senile plaque formation in aged *APP* mice. Brain sections from a 710-day old *APP* mouse were stained with anti-A β antibodies. a. 400X magnification showing a compact senile-like plaque. b. 100X magnification showing florid plaque formation.