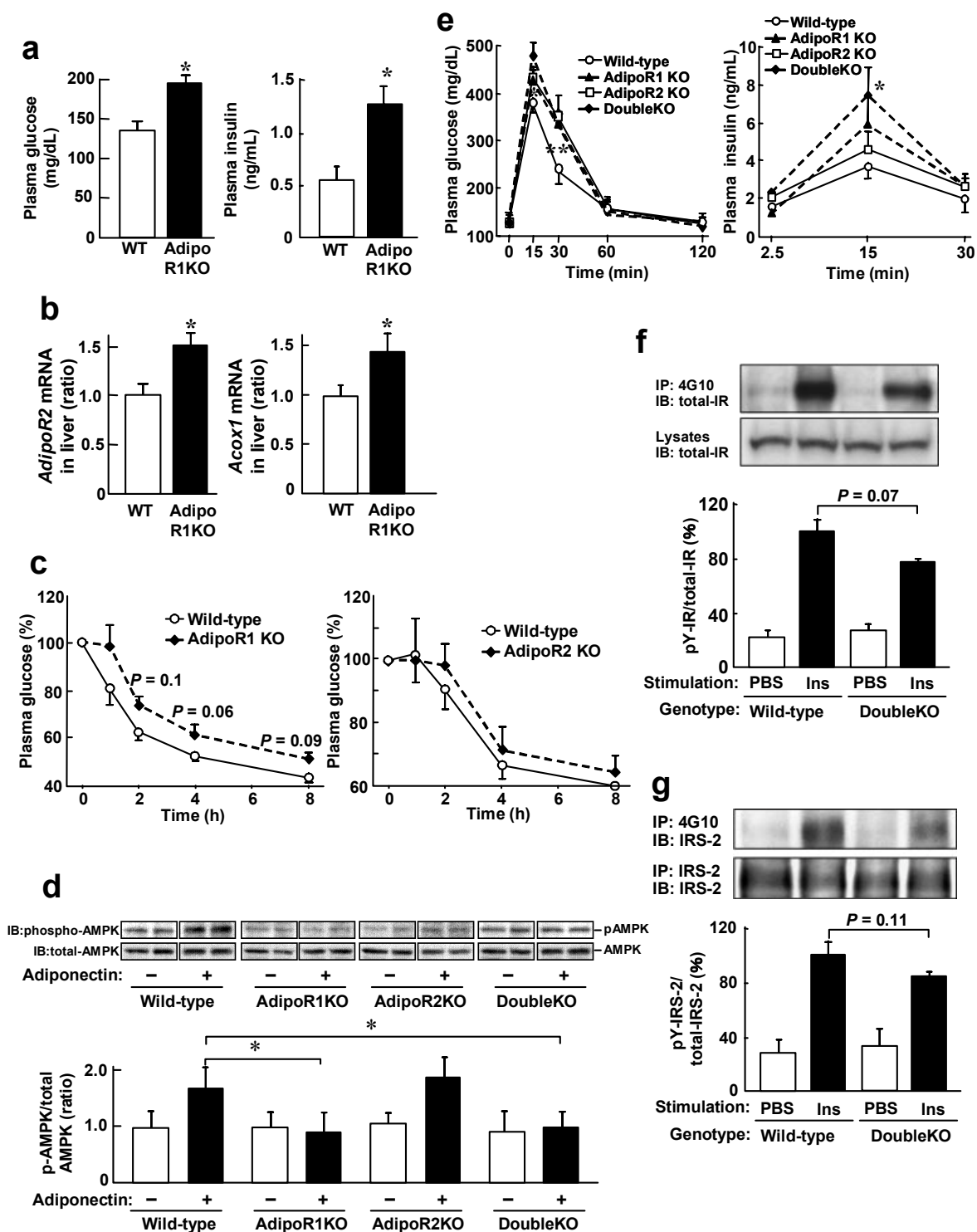


## Supplementary Figure 4



**Supplementary Figure 4 | Adiponectin action, glucose metabolism and insulin signal transduction in *AdipoR1*<sup>-/-</sup>, *AdipoR2*<sup>-/-</sup>, and *AdipoR1*<sup>-/-</sup> · *AdipoR2*<sup>-/-</sup> mice.**

**a-g**, Plasma glucose (**a,e left,c**), plasma insulin (**a,e right**) on C57Bl/6 background (**a-c**) under ad libitum-fed conditions (**a**), during adiponectin sensitivity test (**c**) or during oral glucose tolerance test (2 g kg<sup>-1</sup> glucose) on the HF diet for 8 weeks (**e**), phosphorylation and amount of AMPK (**d**) or IRbeta (**f**) or IRS-2 (**g**) in hepatocytes treated with or without full-length adiponectin (10 µg/mL) for 10 min (**d**) or in liver treated with or without insulin (0.01U/g BW) for 5 min (**f,g**) of Wild-type, *AdipoR1*<sup>-/-</sup> (AdipoR1KO), *AdipoR2*<sup>-/-</sup> (AdipoR2KO) and *AdipoR1*<sup>-/-</sup> · *AdipoR2*<sup>-/-</sup> (Double KO) mice on C57Bl/6 and 129/sv background (**d-g**). Graph (**d,f,g bottom**) shows densitometric quantification of bands, and data were corrected for the total amount of AMPK (**d**) or IRbeta (**f**) or IRS-2 (**g**) protein in each sample and are expressed as the ratio to the value of vehicle-injected wild-type mice (**d**) or percent of the value of WT treated with insulin (**f,g**). Each bar represents the mean ± s.e.m ( $n = 10-16$  (**a-c,e**), 6 (**d, f,g**) per genotype or condition). (\*,  $P < 0.05$ ; \*\*,  $P < 0.01$  ; between two groups, as indicated, or versus wild-type).