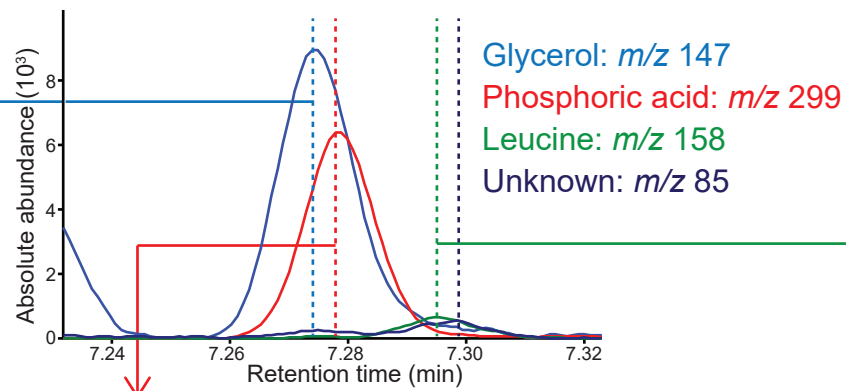
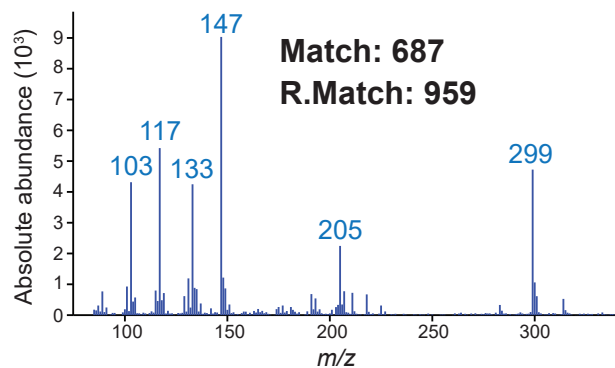


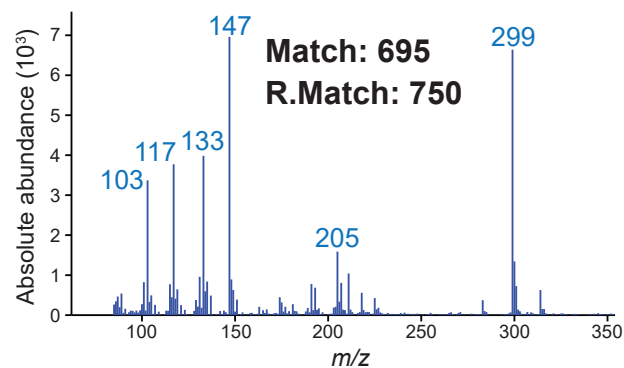
LECO GC-TOFMS



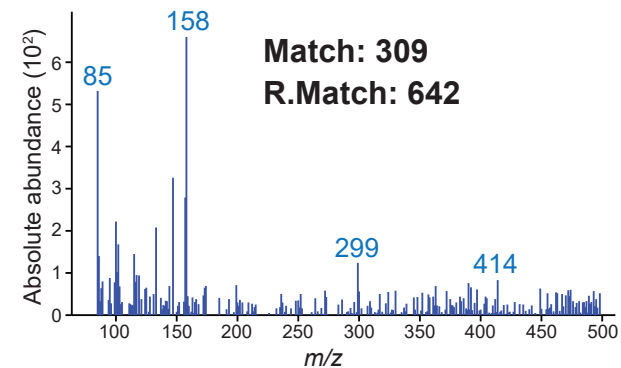
Raw spectrum at 7.274 min



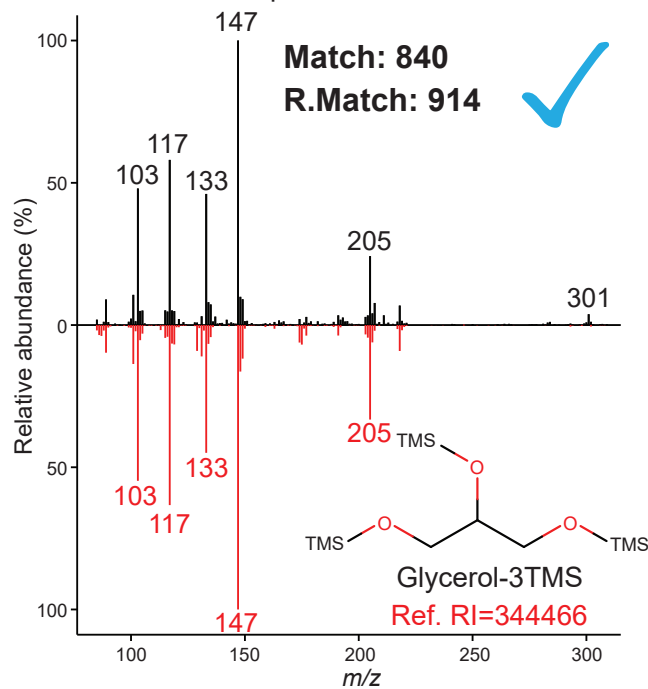
Raw spectrum at 7.279 min



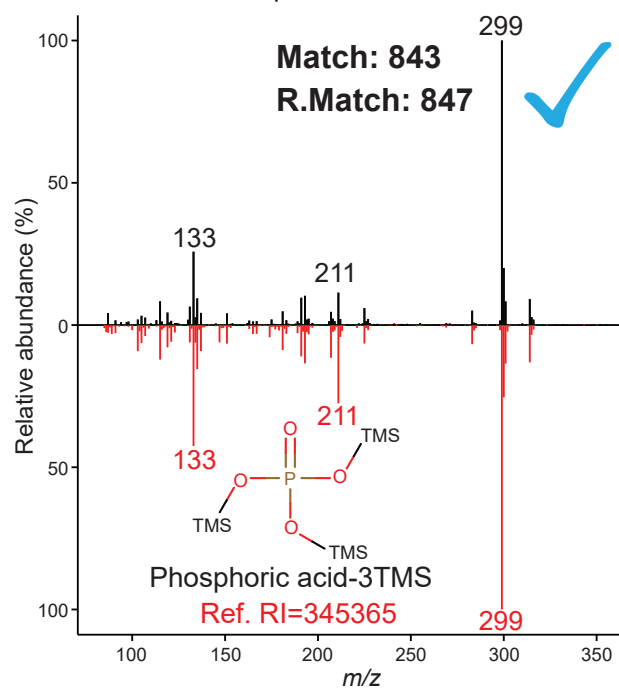
Raw spectrum at 7.295 min



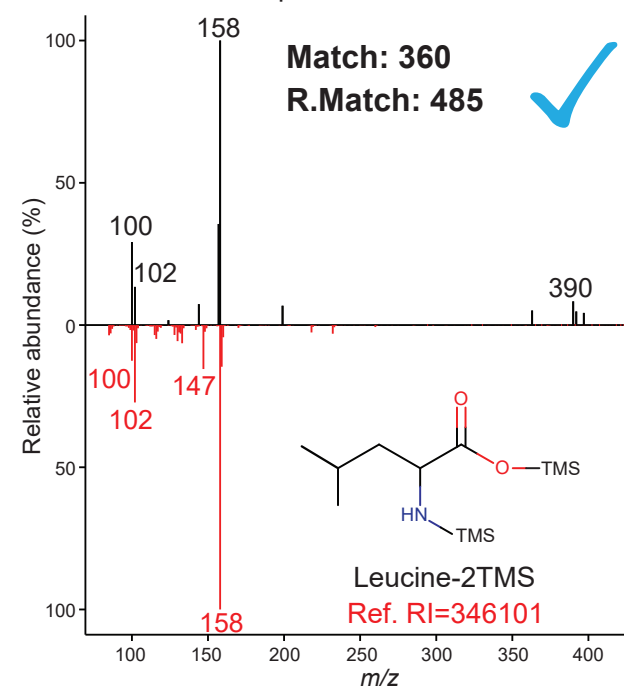
Deconvoluted spectrum at Fiehn RI=344208

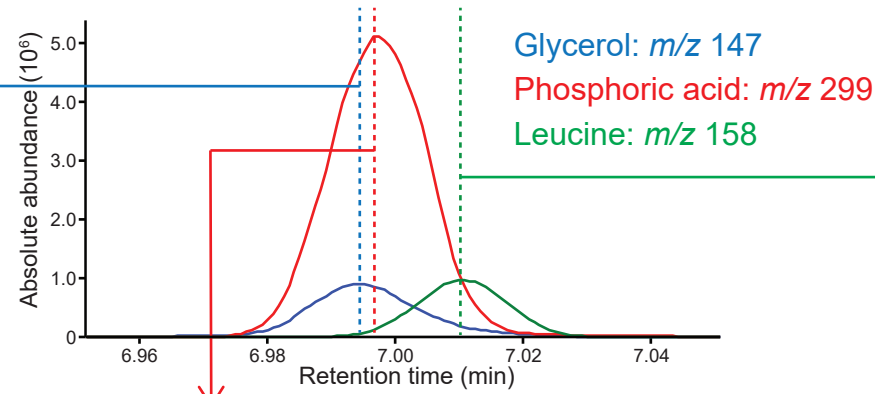


Deconvoluted spectrum at Fiehn RI=344605

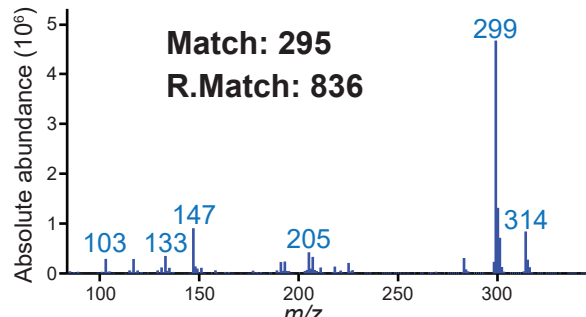


Deconvoluted spectrum at Fiehn RI=345956

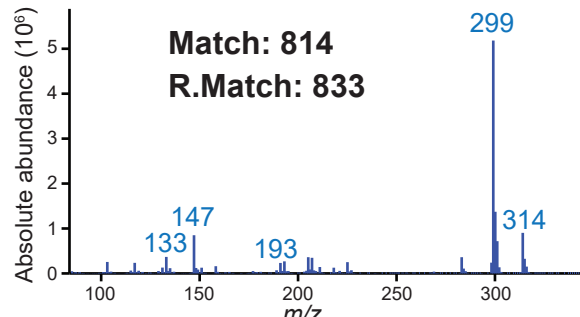




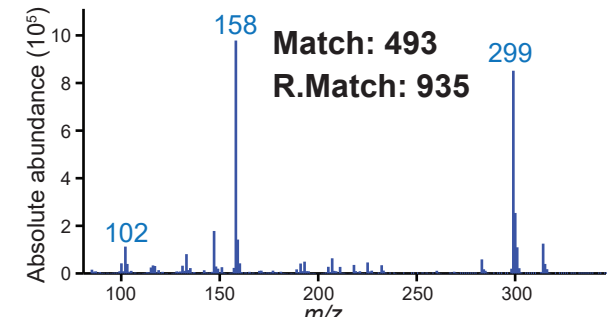
Raw spectrum at 6.994 min



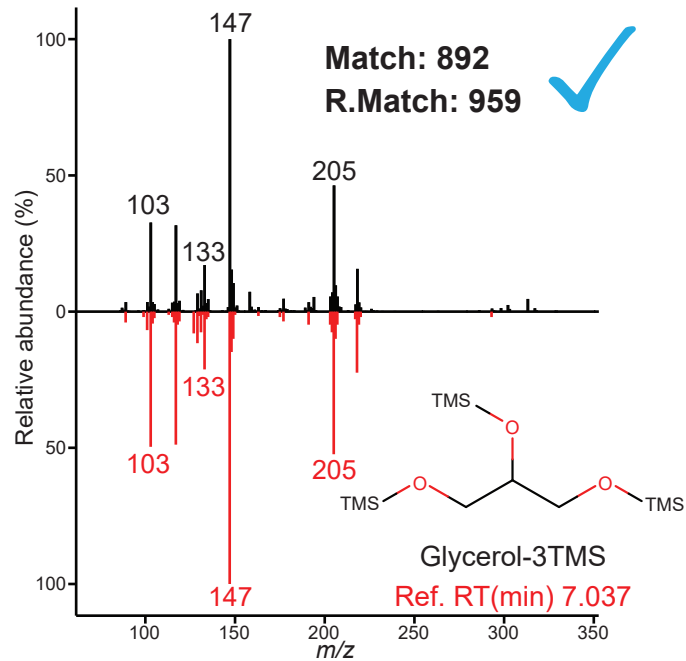
Raw spectrum at 6.997 min



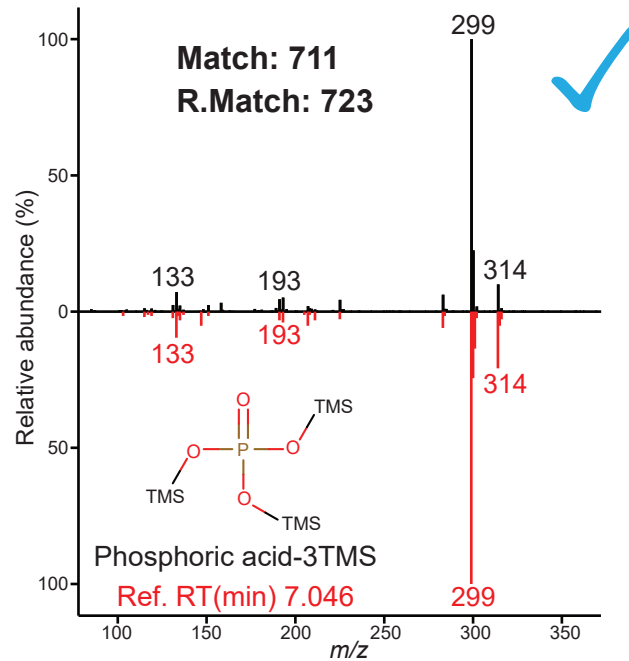
Raw spectrum at 7.001 min



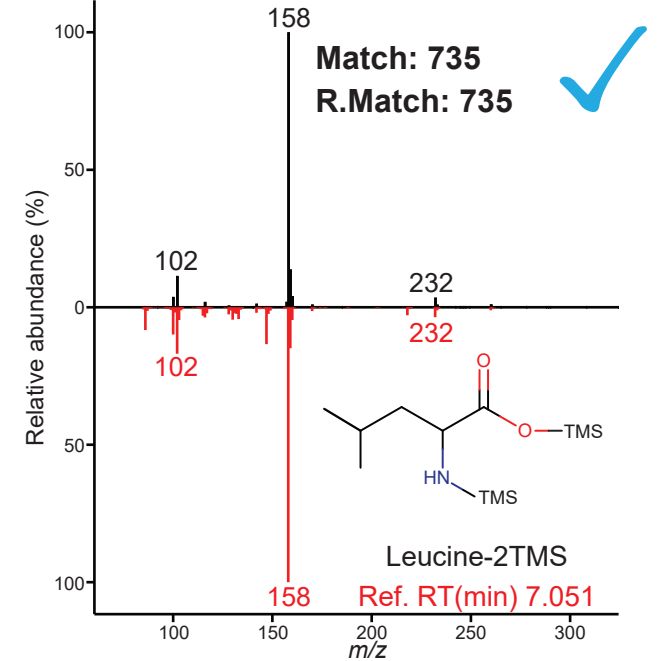
Deconvoluted spectrum



Deconvoluted spectrum



Deconvoluted spectrum

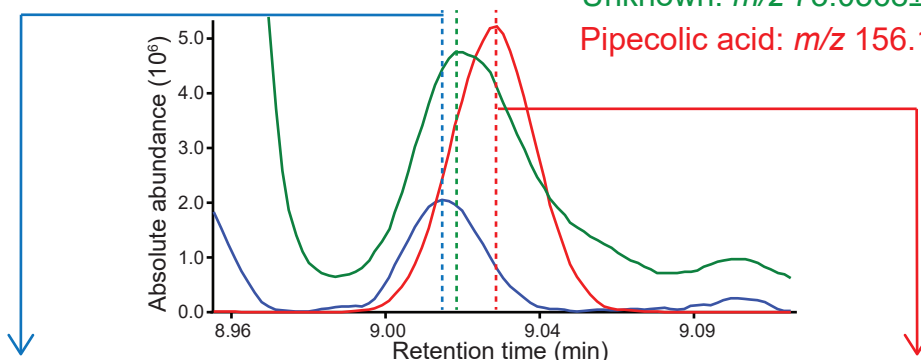


Bruker GC-TOFMS

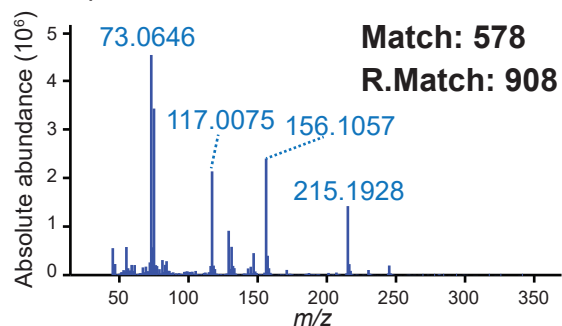
Pelargonic acid: m/z 117.0075 \pm 0.1

Unknown: m/z 73.0568 \pm 0.1

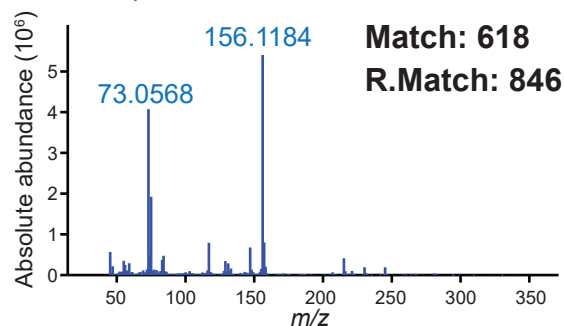
Pipecolic acid: m/z 156.1184 \pm 0.1



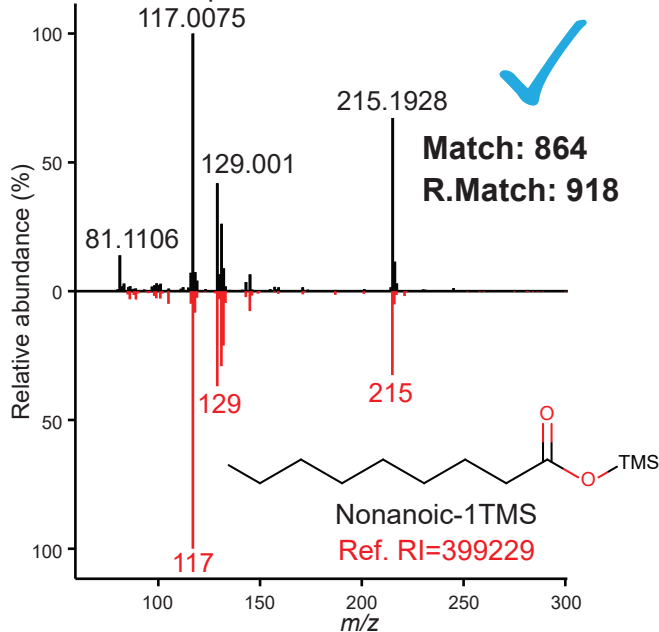
Raw spectrum at 9.014 min



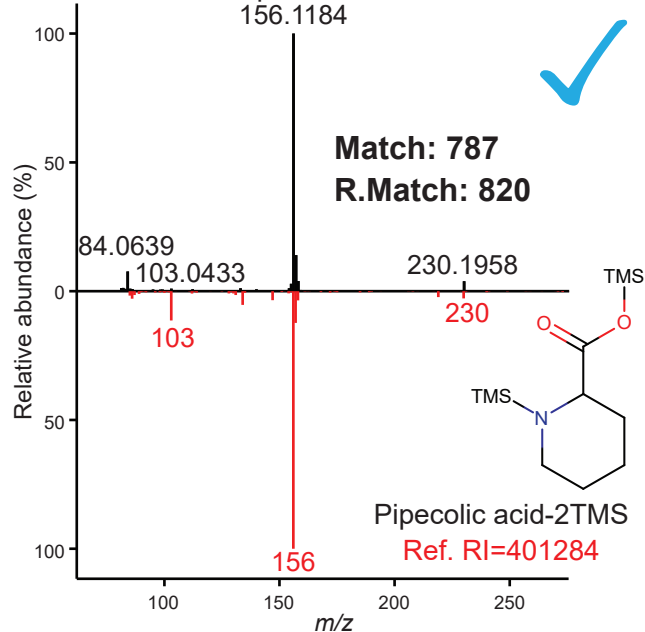
Raw spectrum at 9.029 min



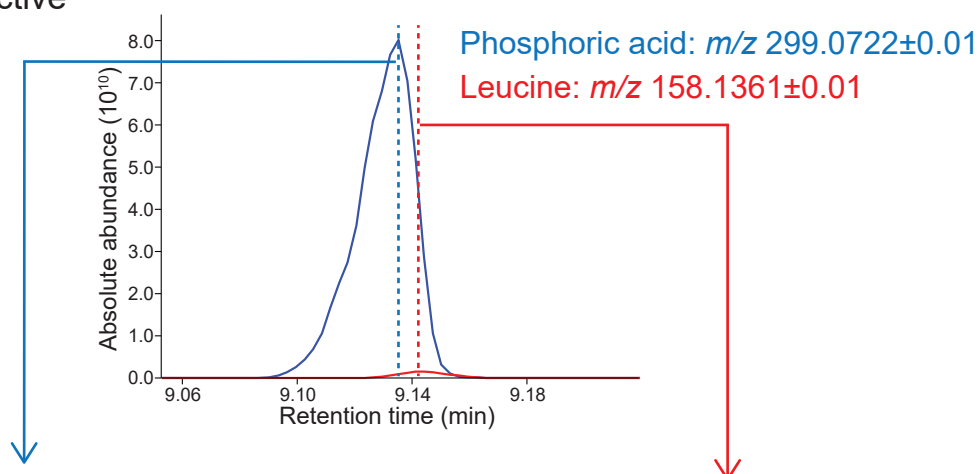
Deconvoluted spectrum at Fiehn RI=400617



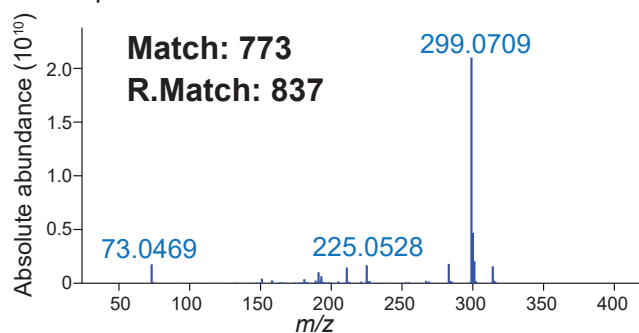
Deconvoluted spectrum at Fiehn RI=401245



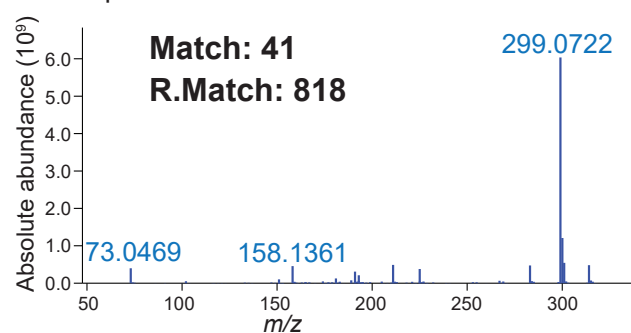
Thermo GC-QExactive



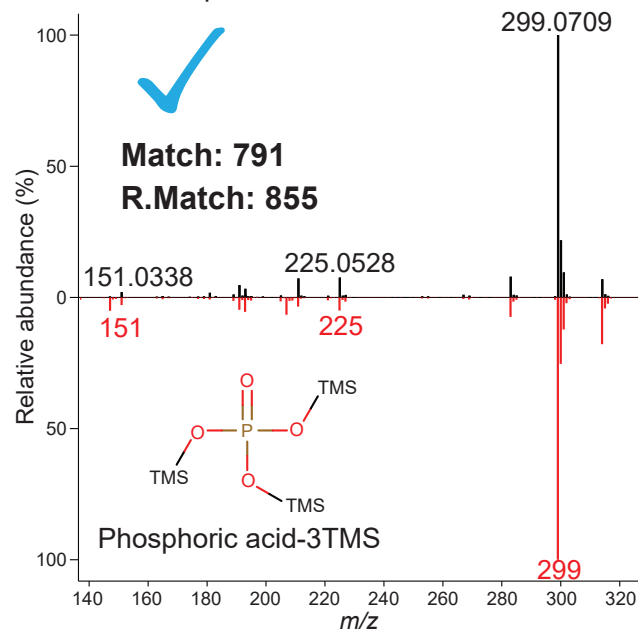
Raw spectrum at 9.135 min



Raw spectrum at 9.144 min



Deconvoluted spectrum



Deconvoluted spectrum

