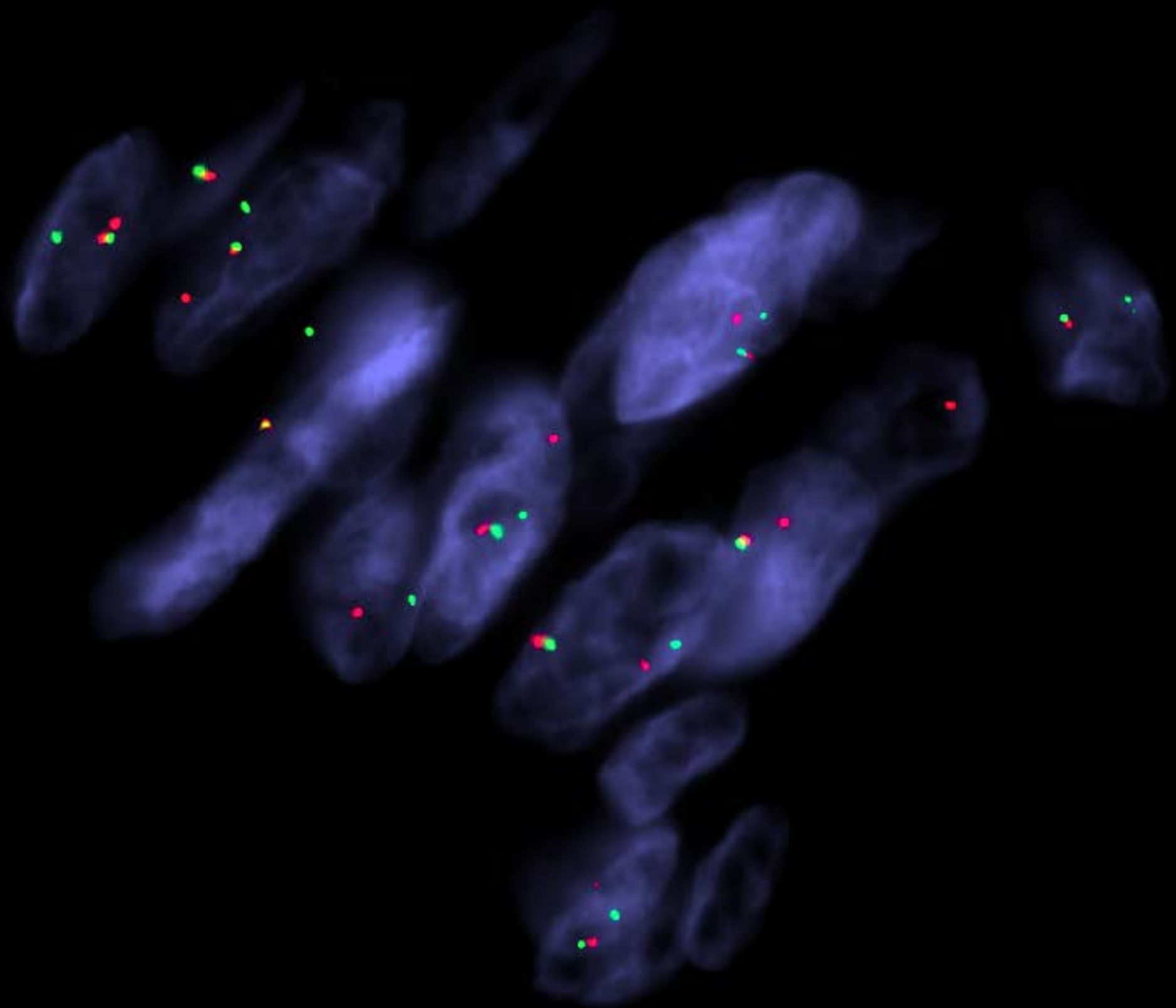


Supplementary Table 1: Custom BAC probes used for fluorescence in situ hybridization (FISH)

BAC clones	cytobands	genes	GP-starting	GP-ending
RP11-261H5	16p11.2	C-FUS	31213239	31400225
RP11-101P23	16p11.2	C-FUS	31400228	31565109
RP11-58G23	16p11.2	C-FUS	31567733	31769757
RP11-75J11	16p11.2	T-FUS	30663929	30840589
RP11-717K18	19p13.2	C-NACC1	13265136	13427691
RP11-97B10	19p13.2	C-NACC1	13444980	13595109
RP11-148D11	19p13.2	T-NACC1	13003895	13178552

BAC, bacterial artificial chromosome; GP, genomic position (GRCh37/hg19 assembly); T, telomeric; C, centromeric



Supplementary Figure 1: Dual-color fusion assay FISH showing merged red and green signals in keeping with a *FUS-NACCI* fusion (green, telomeric, *FUS*; red, centromeric *NACCI*).