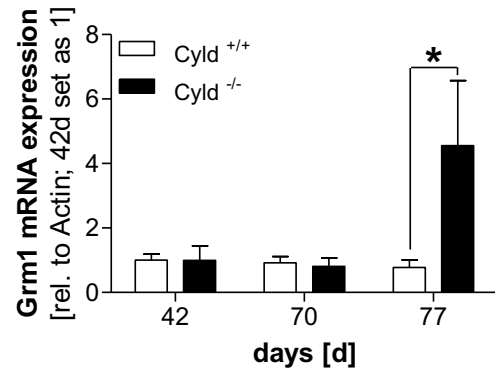


Supplementary Figure 1

A



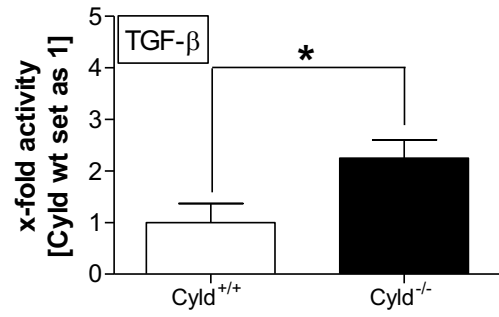
Supplementary Fig.S1: Development of lymph node metastasis in Tg(*Grm1*)

Cyld wt and deficient mice

Grm1 mRNA expression level of lymph node tissues from *Cyld*-wildtype and *Cyld*-knockout mice analyzed at three age of day 42, 70 and 77 of the mice (42d set1). (*: $p < 0.05$)

Supplementary Figure 2

A



Supplementary Fig.S2: Analysis of TGF-beta signaling

Luciferase reporter gene assay using (CAGA)₉LUC vector revealed a significant enhanced TGF-β activity of the *Cyld*-knockout compared to *Cyld*-wildtype cell line. (*: p < 0.05)