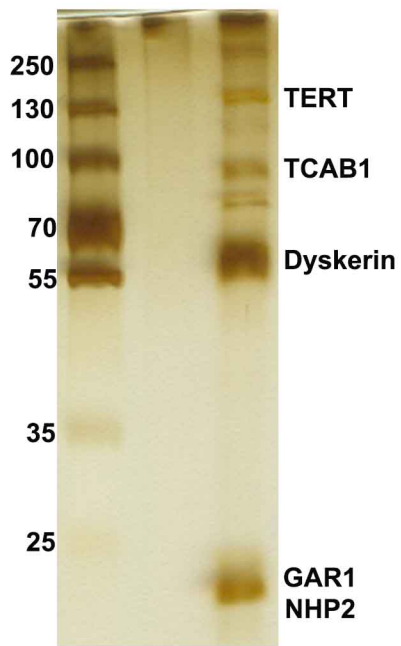
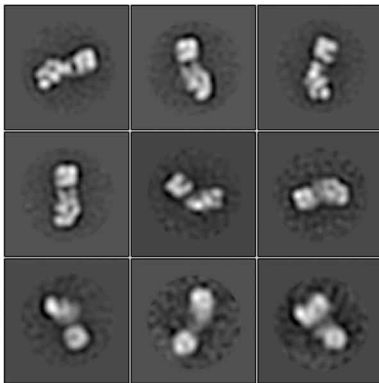
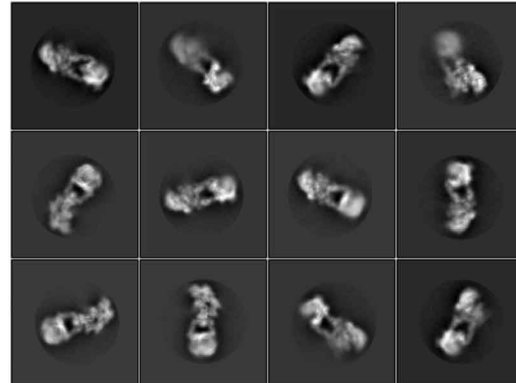
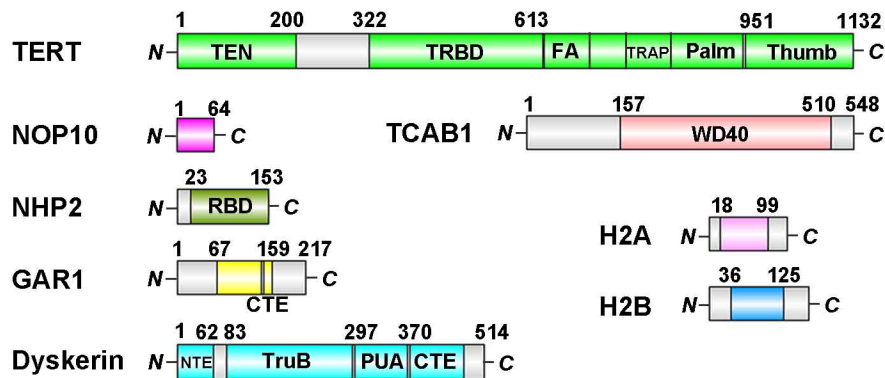


a**b**

Uniprot Acc.No.	<i>H. sapiens</i> protein	Peptide spectrum matches	Unique peptides
O14746	TERT	224	64
O60832	Dyskerin	146	41
Q9BUR4	TCAB1	95	22
Q9NY12	GAR1	30	8
Q9NX24	NHP2	26	9
Q9NPE3	NOP10	13	7
O60814	H2B 1-K	15	7
P06899	H2B 1-J	12	6
Q6FI13	H2A 2-A	12	5
⋮	⋮	⋮	⋮
P62805	H4	5	5
P68431	H3.1	2	2

c**d****e**

Supplementary information, Fig. S1 Biochemical and biophysical evaluation of purified human telomerase holoenzyme. **a** Silver-stained SDS-PAGE gel of the purified telomerase holoenzyme complex. **b** Mass spectrometry analysis of the purified telomerase holoenzyme complex. **c** Negative-stained 2D class averages of the purified telomerase holoenzyme complex. **d** Representative 2D class averages of telomerase particles from cryo-EM experiments. **e** Domain organizations of human telomerase protein components.