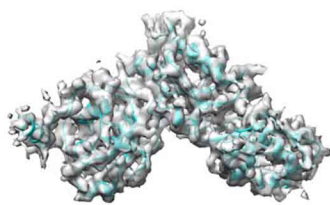
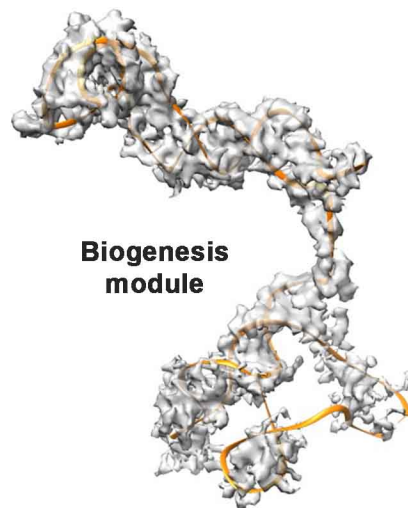




Dyskerin_1



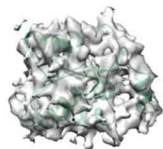
Dyskerin_2



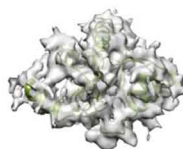
**Biogenesis
module**



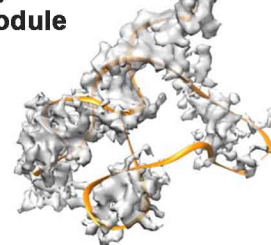
NOP10_1



NHP2_1



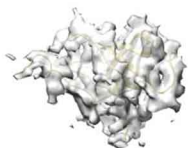
NHP2_2



hTR



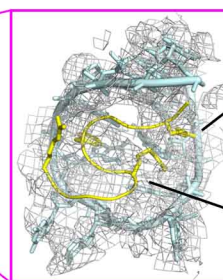
NOP10_2



GAR1_2

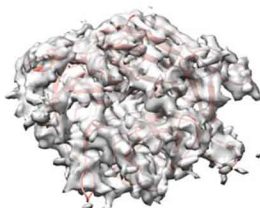


GAR1_1

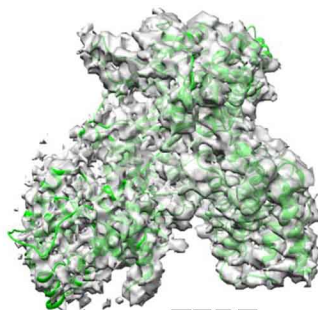


5' tail of hTR

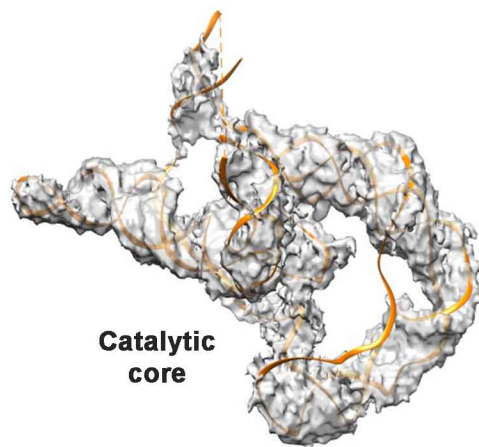
**Arginine-rich
motif**



TCAB1



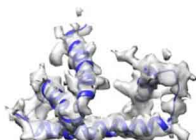
TERT



**Catalytic
core**



H2A



H2B

hTR

Supplementary information, Fig. S4 Representative cryo-EM density maps for the RNA and protein components of human telomerase. A gallery of representative cryo-EM density maps for all components of human telomerase.