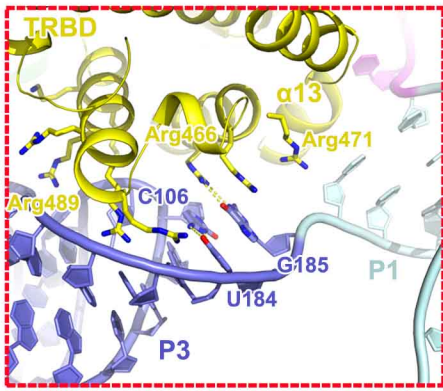
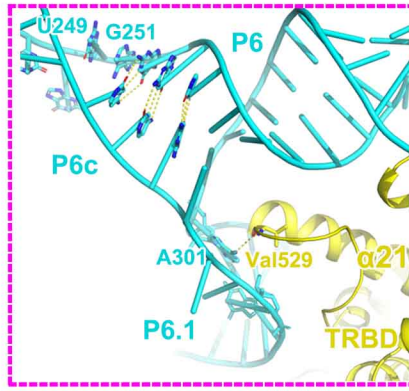
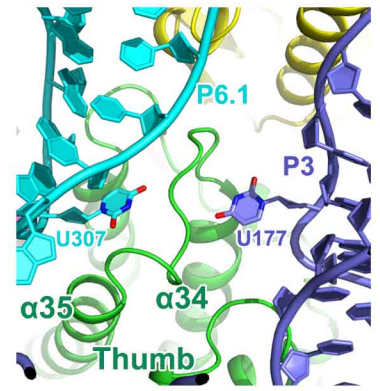
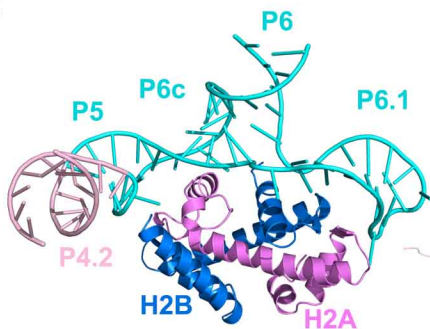
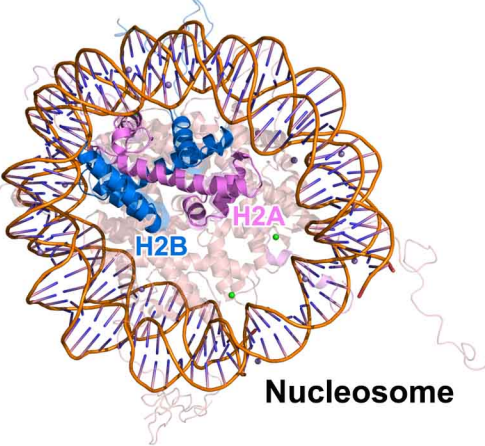
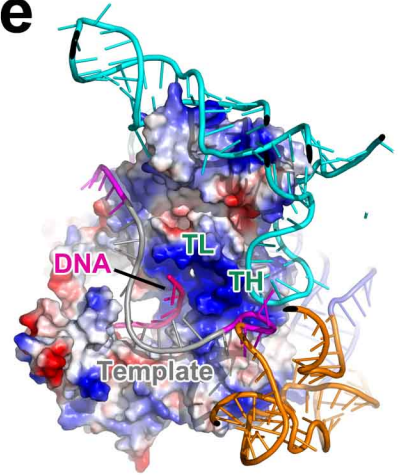
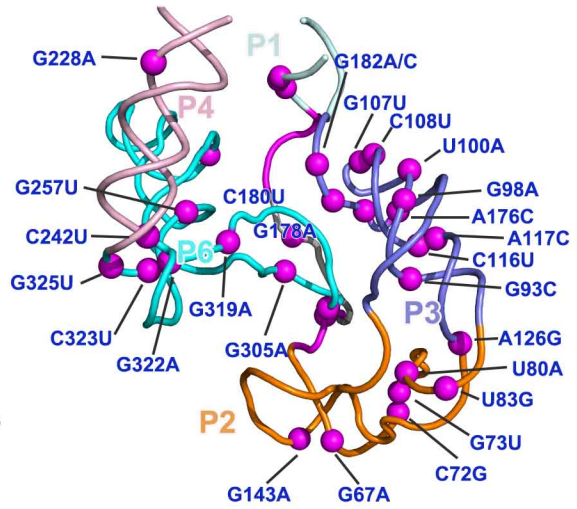
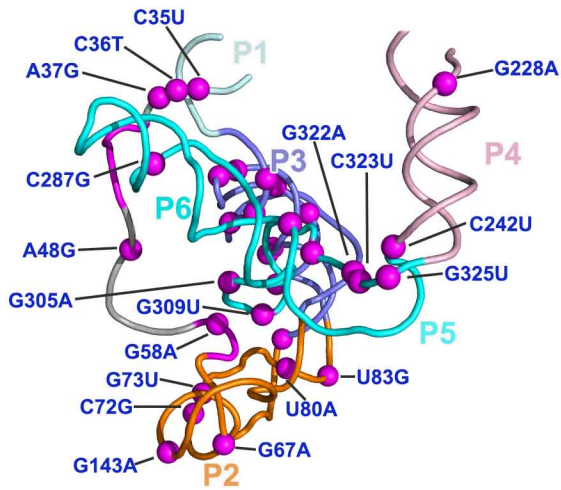


a**b****d****c**

TWJ with H2A-H2B

**e****f**

Supplementary information, Fig. S9 Details of the interactions between hTR and TERT. a, b Closeup views of the interactions between the TRBD subdomain of TERT and the t-PK (**a**) and the TWJ (**b**) domains of hTR, respectively. TERT and hTR are shown in ribbon and cartoon representations, respectively. The residues and nucleotides that mediate the interactions are shown in stick model. **c** Structural comparison of H2A/H2B-TWJ and nucleosome structures. **d** Closeup views of the interactions between the thumb subdomain of TERT and the t-PK and TWJ. **e** Electrostatic surface potential of substrate DNA binding site of TERT. Positive potential, blue; negative potential, red. **f** Human disease-derived mutations are mapped onto the corresponding positions in the hTR structure. Single nucleotide substitution mutations are shown in magenta sphere.