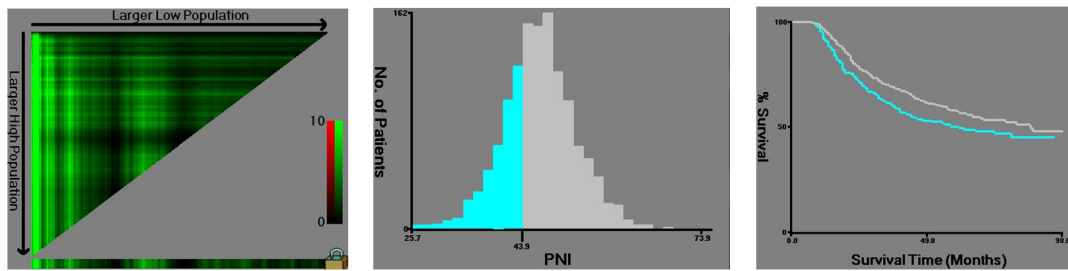
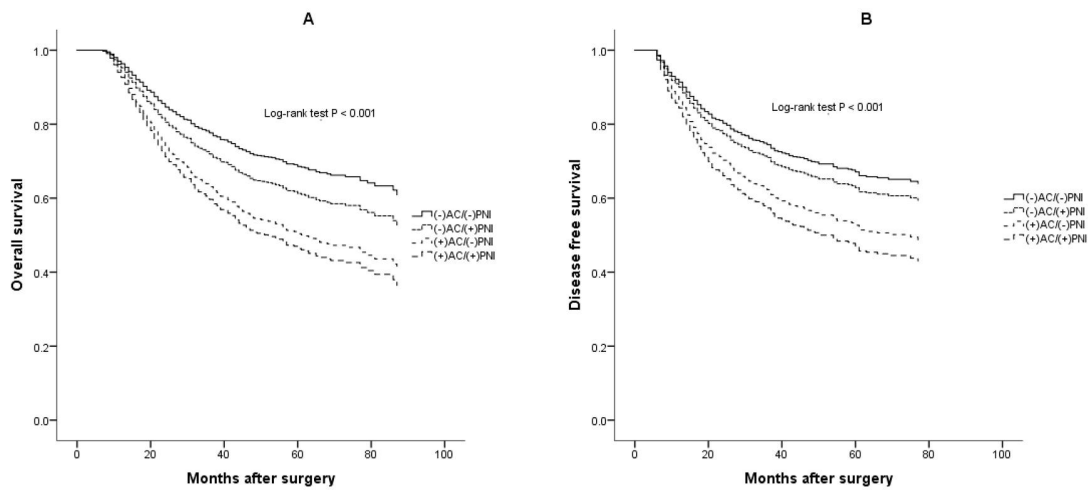


AC, adjuvant chemotherapy

Supplementary Figure 1. Flow diagram.



Supplementary Figure 2. X-tile analysis of cancer-specific survival performed using patients' data to determine the optimal cut-off value for the prognostic nutritional index (PNI). In the left panels, the X-axis represents all potential cut-off values from low to high (left to right) that define a low subset, whereas the Y-axis represents the cut-off values from high to low (top to bottom) that define a high subset. Red coloration of a cut-off value indicates an inverse correlation with time to gastric cancer-specific death, and the green coloration represents direct associations. The optimal cut-off value determined by the left panels is shown in the histogram of the entire cohort (middle panels). Kaplan-Meier plots are displayed in the right panels, where blue represents the low subgroup and gray represents the high subgroup. The optimal cut-off values for PNI was 43.9, with maximum χ^2 log-rank value of 8.1929.



Supplementary Figure 3. Survival curves in 1,288 patients who underwent curative resection for stage II/III gastric cancer stratified by the prognostic nutritional index (PNI) and completeness of planned adjuvant chemotherapy (AC). A) Overall survival (OS); B) Disease free survival (DFS). (+) defined as receiving less than 6 cycles of AC or $PNI < 43.9$, (-) defined as at least 6 cycles of AC or $PNI \geq 43.9$.