

Fig. S1. Fluorescent signals of mCherry was obviated by retinal fixation. AAV-mCherry was intravitreally injected into mice. Eyes were enucleated one month post AAV injection and fixed with or without 4% paraformaldehyde (PFA) for 45 min. Flat-mounted retinas were analyzed for mCherry signals by fluorescence microscopy.

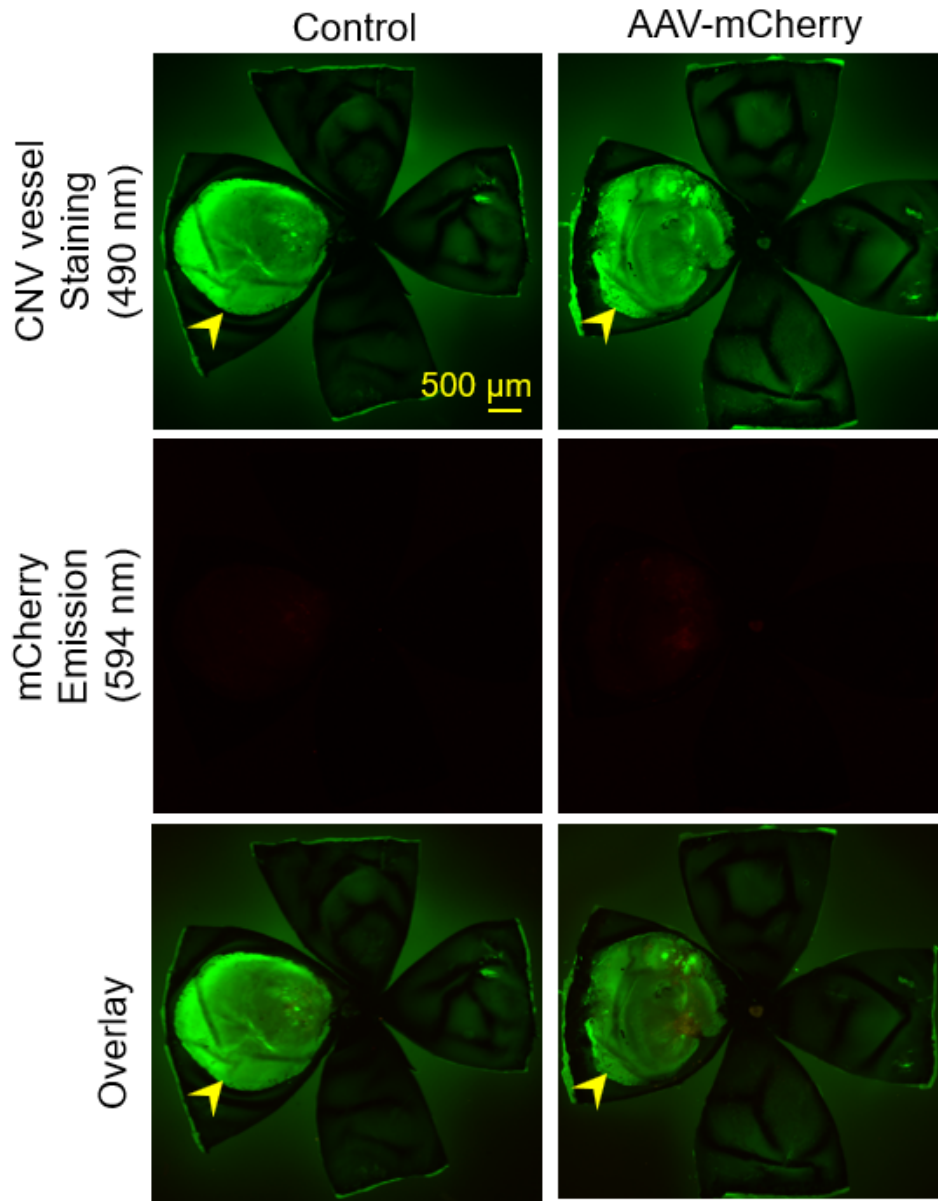


Fig. S2. mCherry signals were not detected in flat-mount RPE eyecups. AAV-mCherry or mock control was intravitreally injected into mice. Eyes were enucleated one month post AAV injection and fixed with 4% paraformaldehyde for 45 min. RPE eyecups were isolated, immunostained for CNV vessels using AF488-IB4, flat-mounted and analyzed for AF488 and mCherry signals by fluorescence microscopy.