

Supplementary Information for “Artificial Intelligence in Sepsis Early Prediction and Diagnosis Using Unstructured Data in Healthcare”

Kim Huat Goh^{1,4*}, Le Wang^{1,4*}, Adrian Yong Kwang Yeow², Hermione Poh³, Ke Li³,
Joannas Jie Lin Yeow³, and Gamaliel Yu Heng Tan³

¹Nanyang Business School, Nanyang Technological University, Singapore

²School of Business, Singapore University of Social Sciences, Singapore

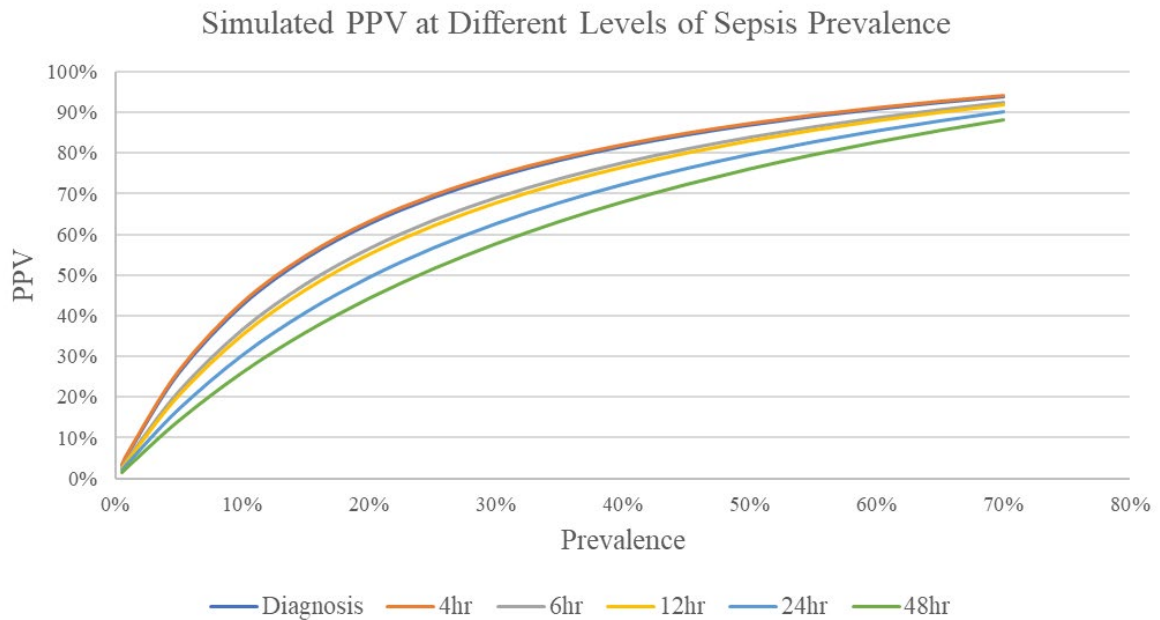
³Academic Informatics Office, Medical Informatics, National University Health System,
Singapore

⁴These authors contributed equally: Kim Huat Goh and Le Wang

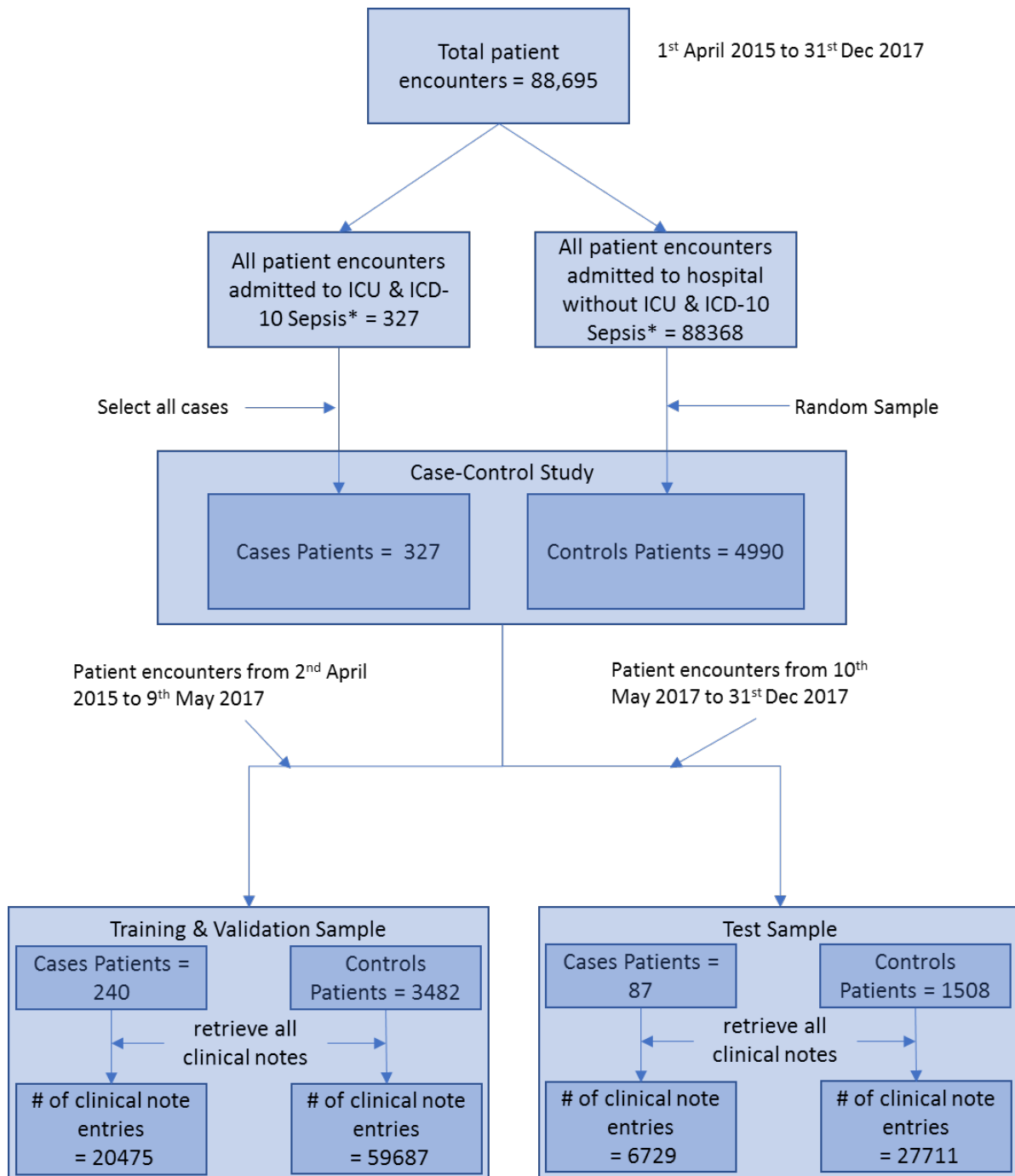
*Correspondence to: akhgoh@ntu.edu.sg; lwang033@e.ntu.edu.sg

Overview

This document contains supplementary information relating to the paper. Supplementary Figures 1, 3 and 4 provide additional diagnostics of the SERA algorithm reported in the paper. Supplementary Figure 2 presents the detailed sampling frame used in this study.



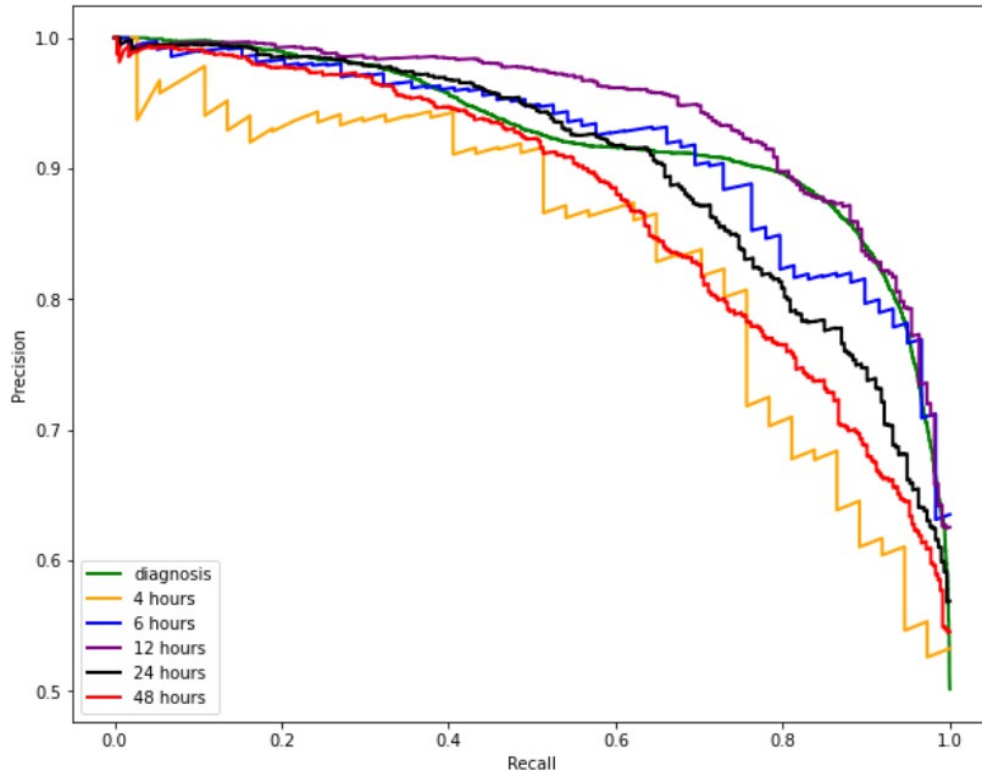
Supplementary Figure 1: Simulated PPV of SERA algorithm at Different Sepsis Prevalence Levels The chart shows how the PPV of SERA algorithm varies as sepsis prevalence changes.



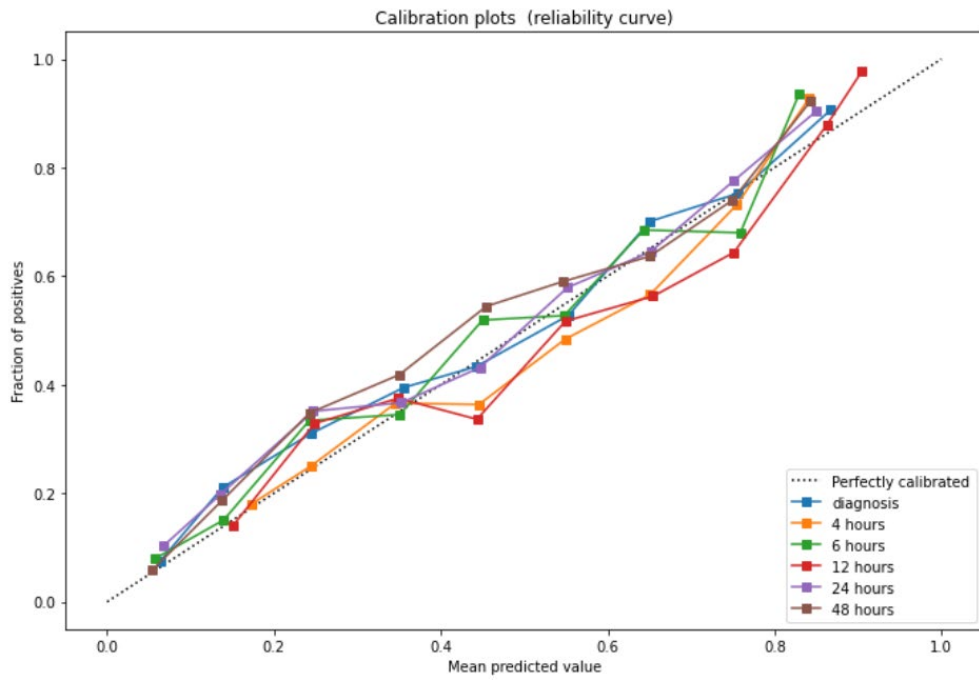
*** ICD-10 Code:**

Sepsis: 'A40.0','A40.1','A40.8','A40.9','A41.2','A41.0','A41.0Z16','A41.1','A40.3',
 'A41.4','A41.50','A41.3','A41.51','A41.52','A41.53','A41.59','A41.81','A41.89', 'A41.9'
 Severe Sepsis: 'R65.20','R65.21','R65.10','R65.11'

Supplementary Figure 2: Data Sample for Training, Validation, and Testing of SERA Algorithm



Supplementary Figure 3: Precision – Recall Curve (SERA algorithm). The vertical axis (precision) is truncated and starts at 0.5.



Supplementary Figure 4: Calibration Curves for SERA Algorithm