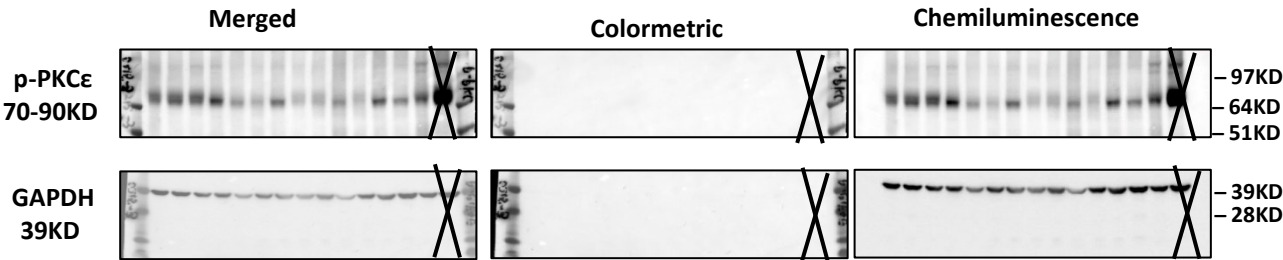
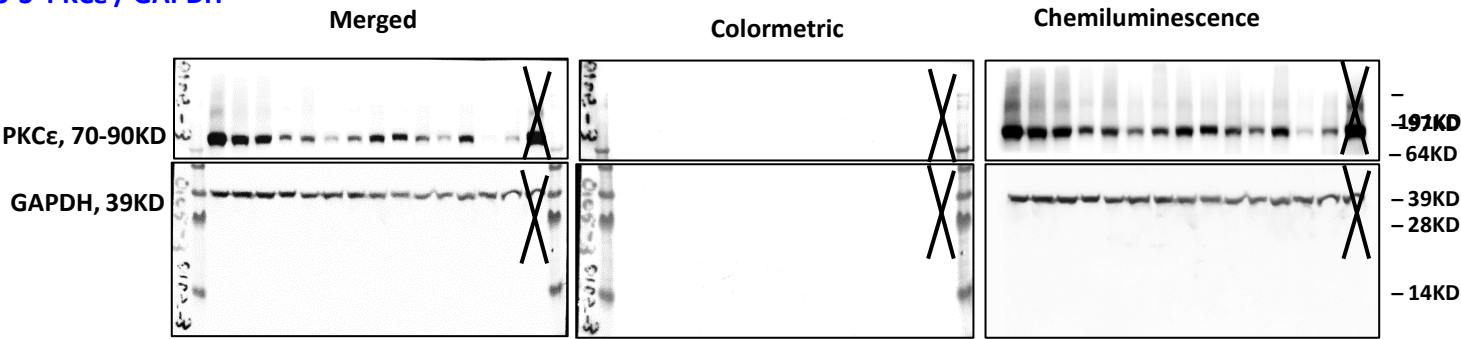


Figure 7B - PKCε – GAPDH, p-PKCε – GAPDH (Caudate)

0215-3 p-PKCε - GAPDH



0105-3 PKCε / GAPDH



“X” indicates samples that are of a different condition not related to the study

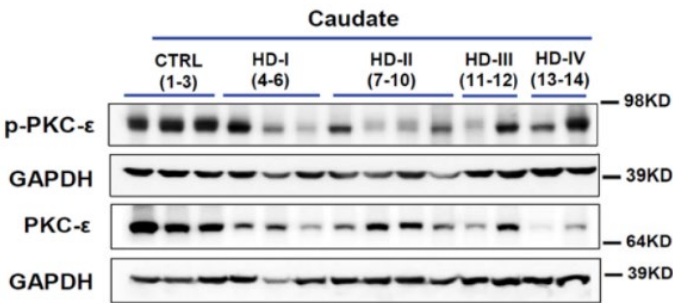
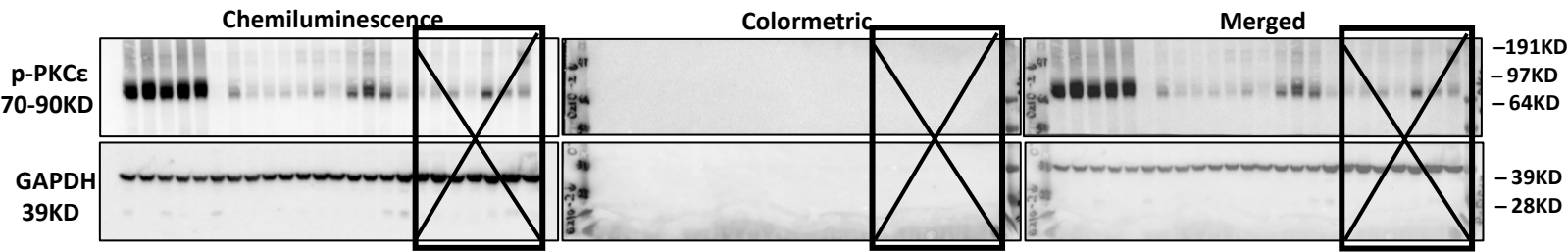
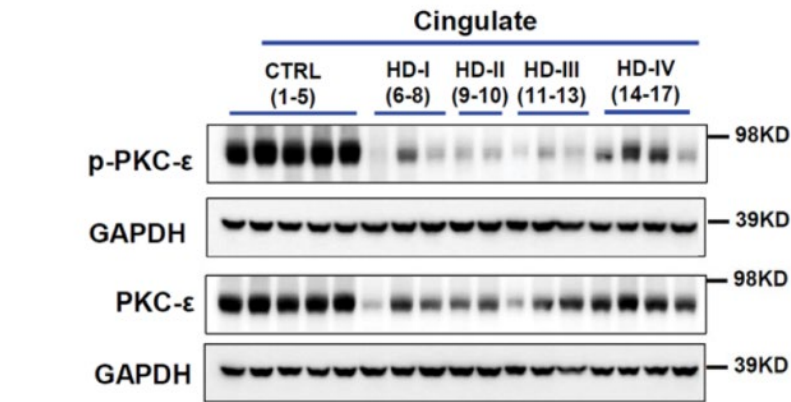
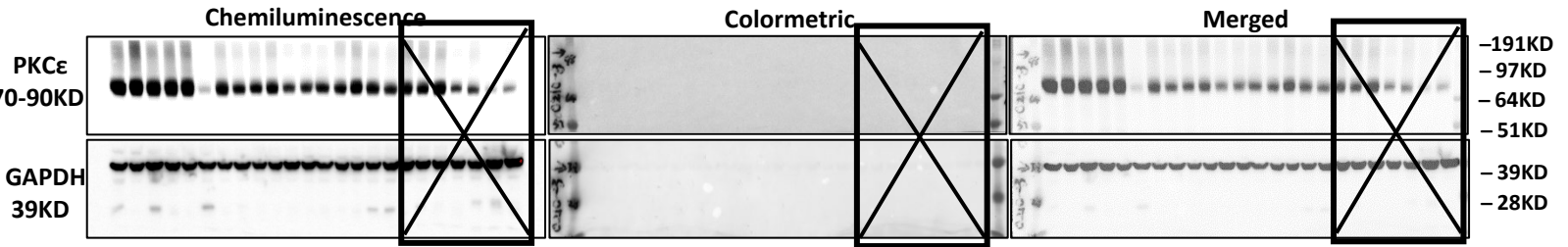


Figure 7B - PKCe – GAPDH, p-PKCe – GAPDH (Cingulate)

0210-2 p-PKCe / GAPDH



0210-3 PKCe / GAPDH (membrane blotted with AKT (~50KD, mouse) first, then stripped, blotted for PKCe (>60KD, rabbit))



“X” indicates samples that are of a different condition not related to the study

Figure 7d - Prkce – Revert, p-Prkce – Revert (cortex)

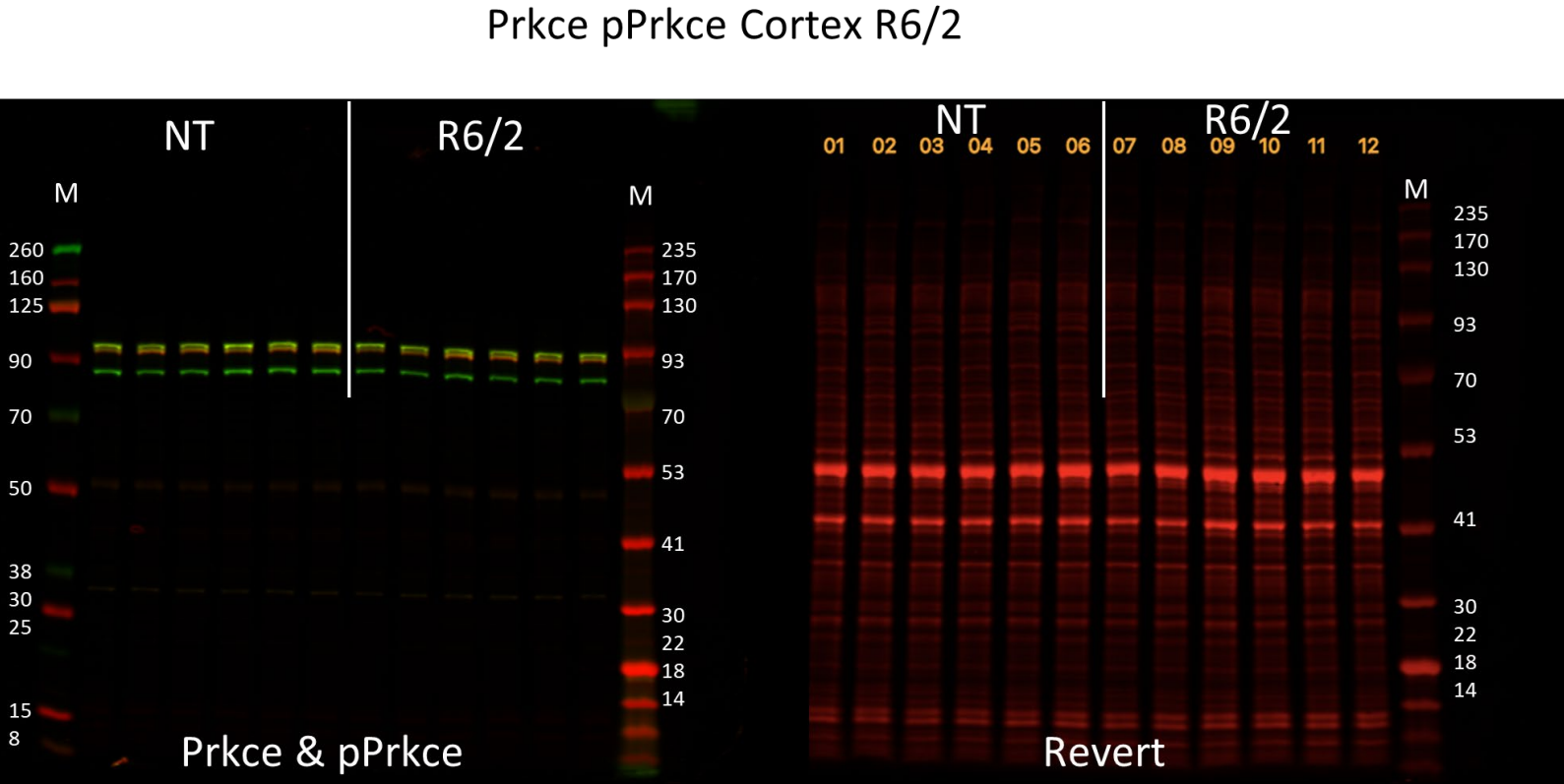
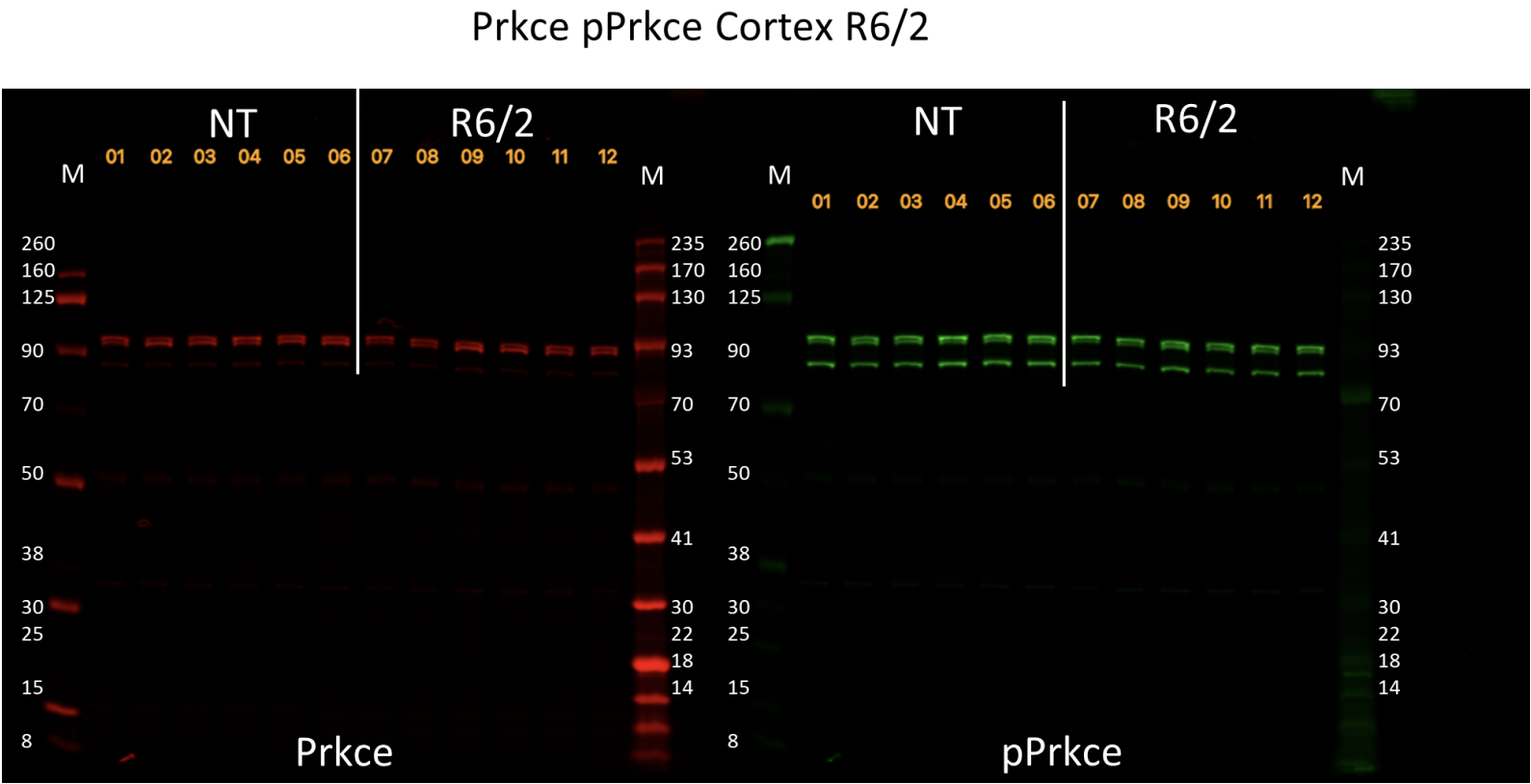


Figure 7d - Prkce – Revert, p-Prkce – Revert (striatum)

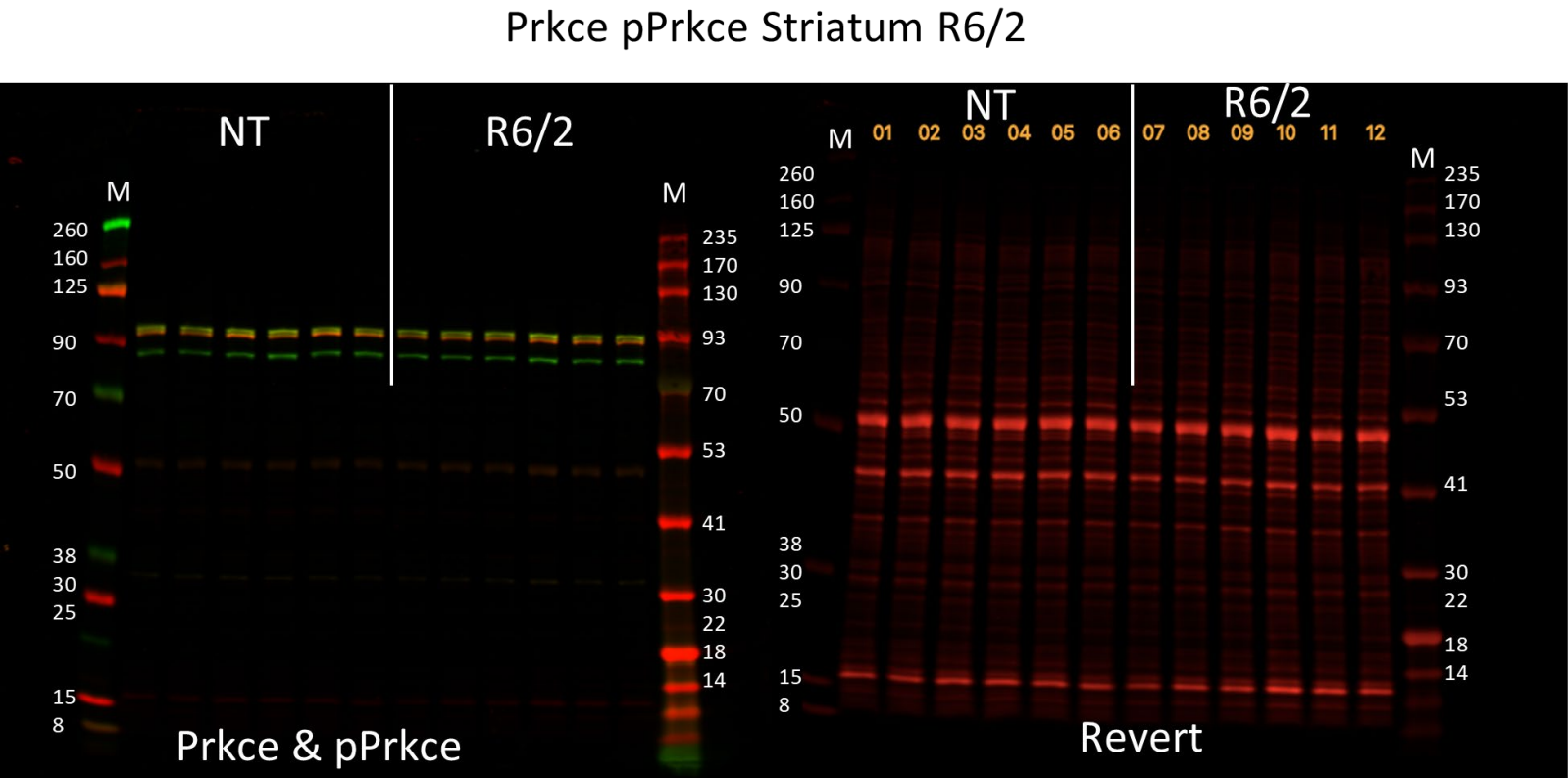
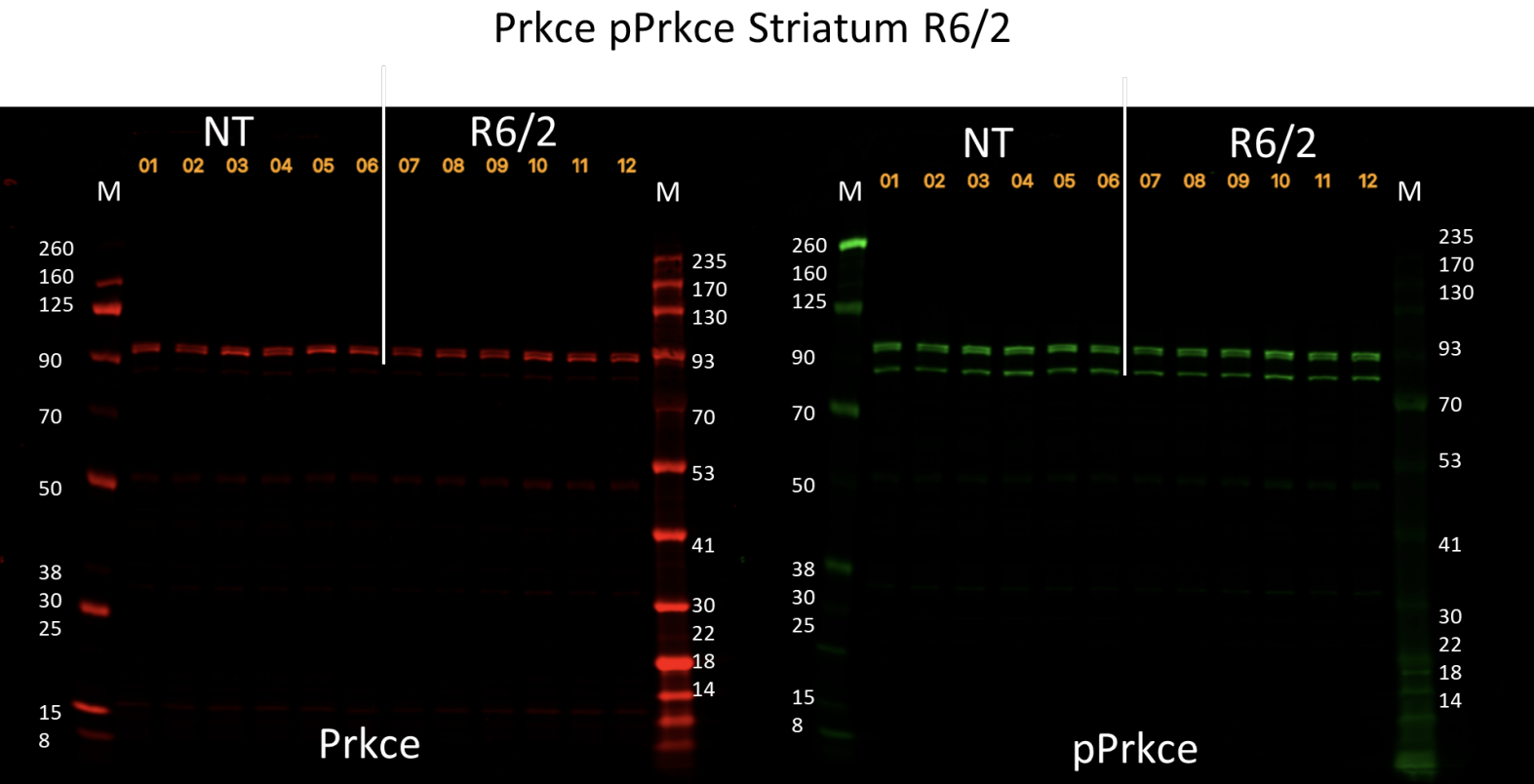
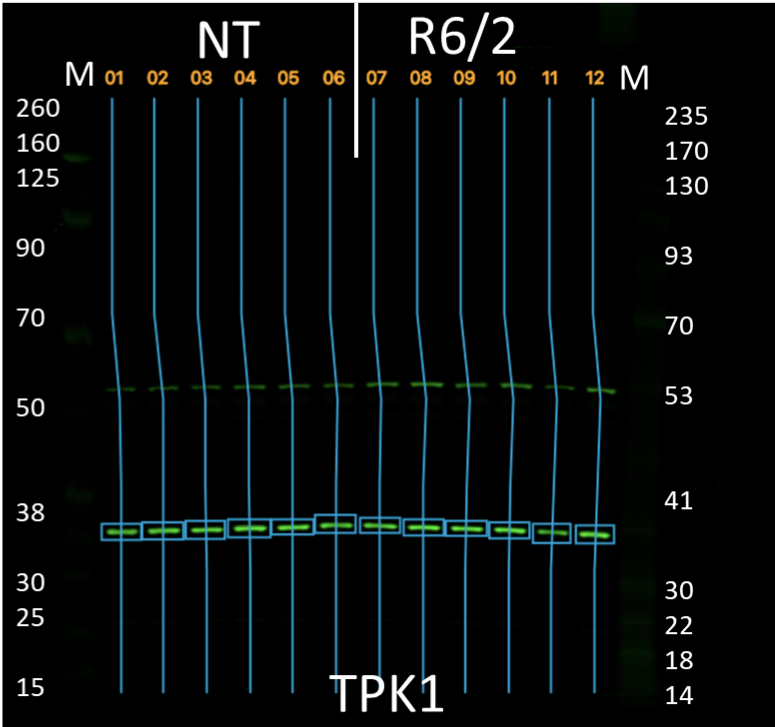
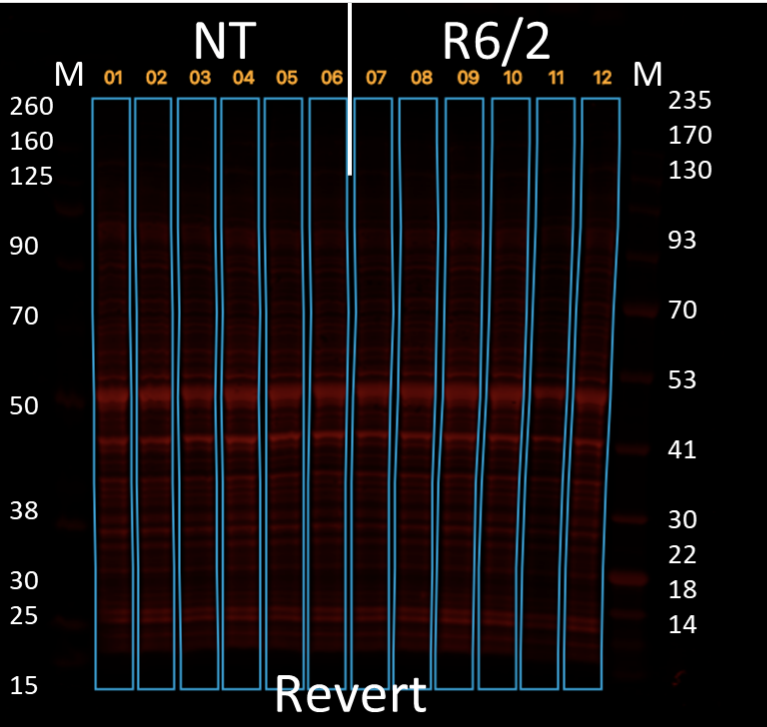


Figure 7d – Tpk1 – Revert, (cortex & striatum)

TPK1 Cortex R6/2



TPK1 Striatum R6/2

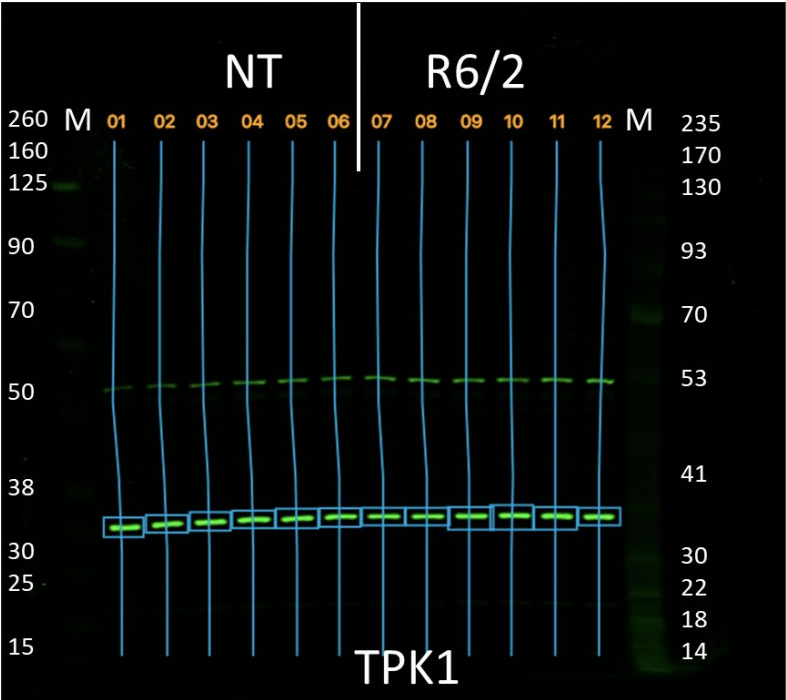
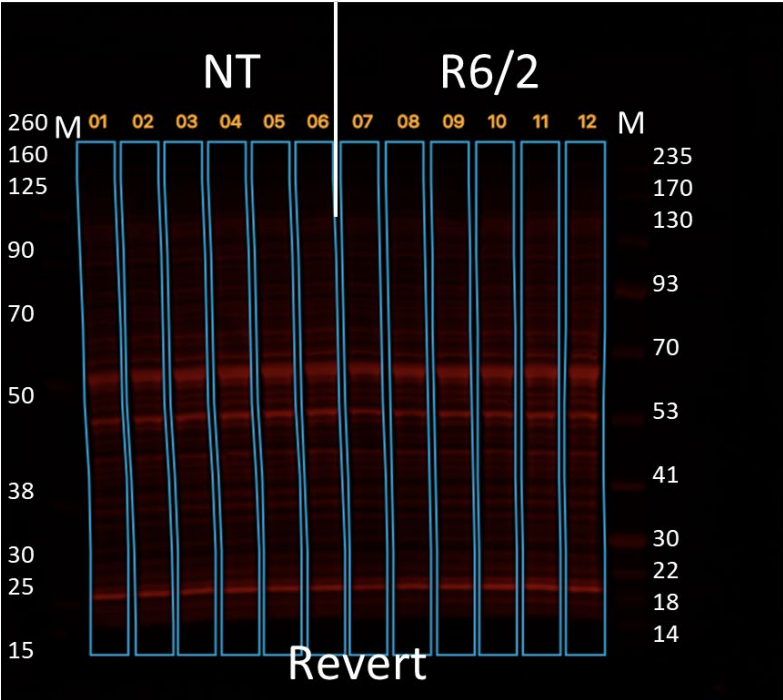


Figure 7f – Tpk1 – Revert, (human)

TPK1 human

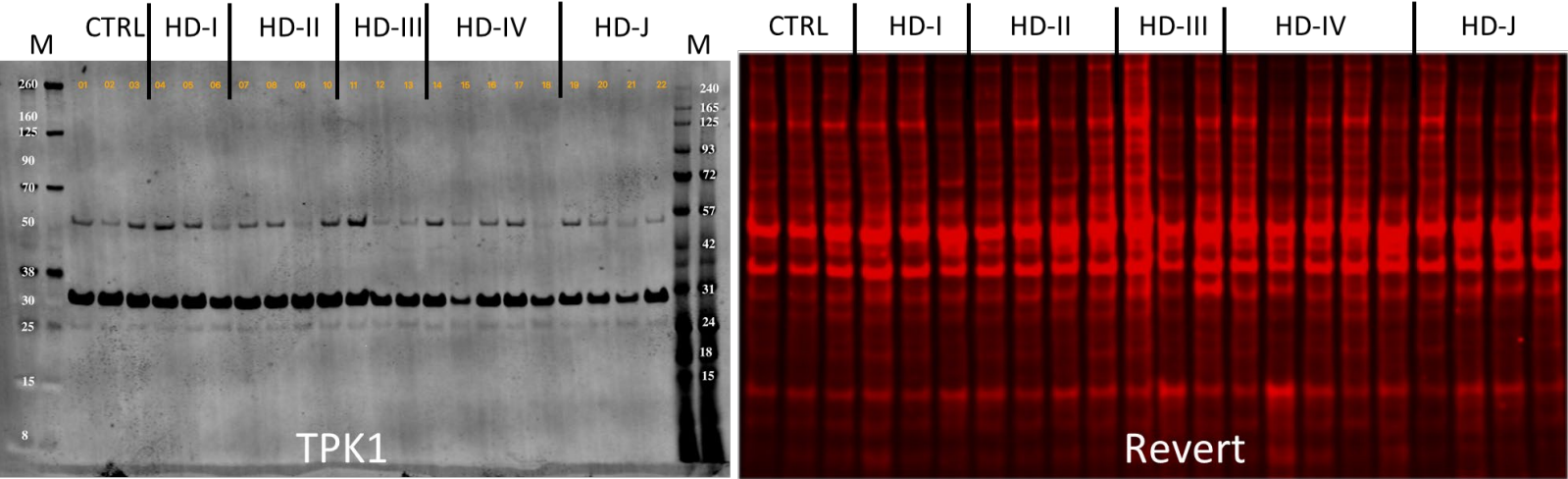


Figure 7i – in vitro WB –A-TUBULIN

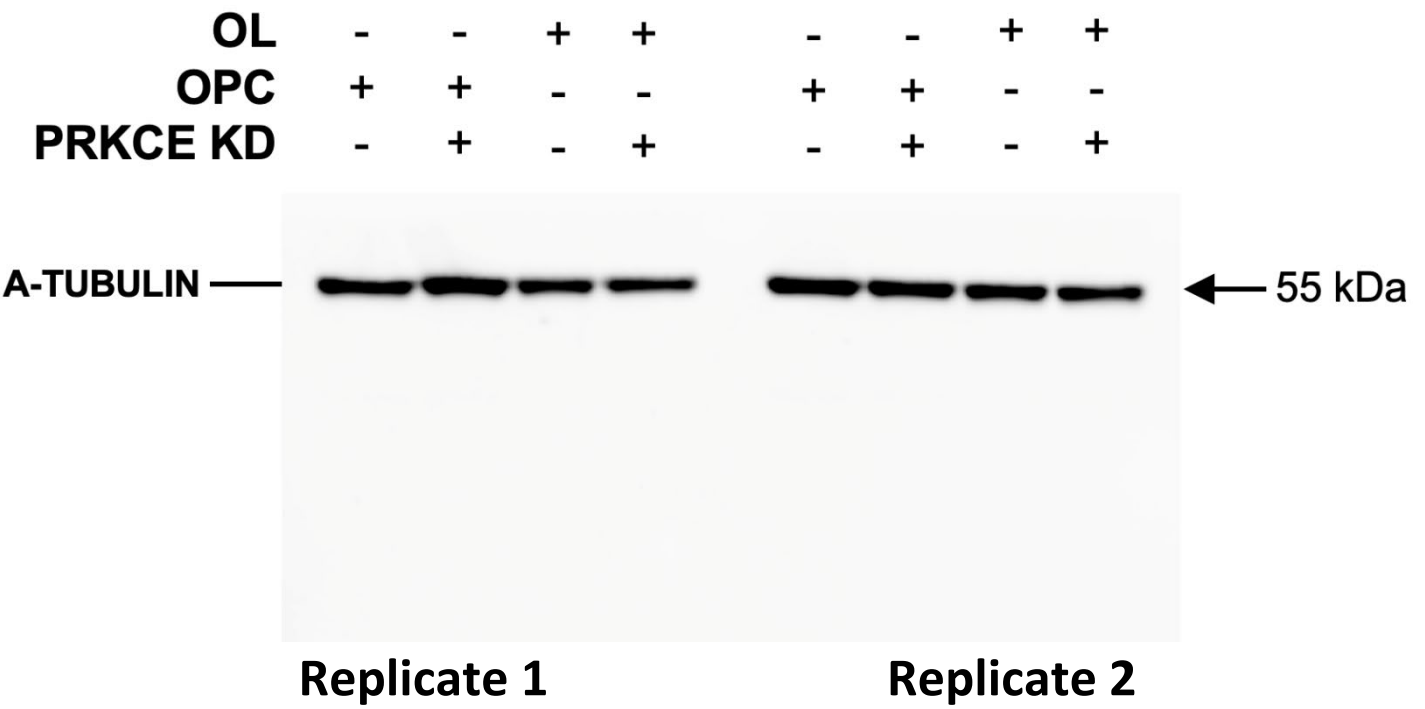


Figure 7i – in vitro WB CNPase

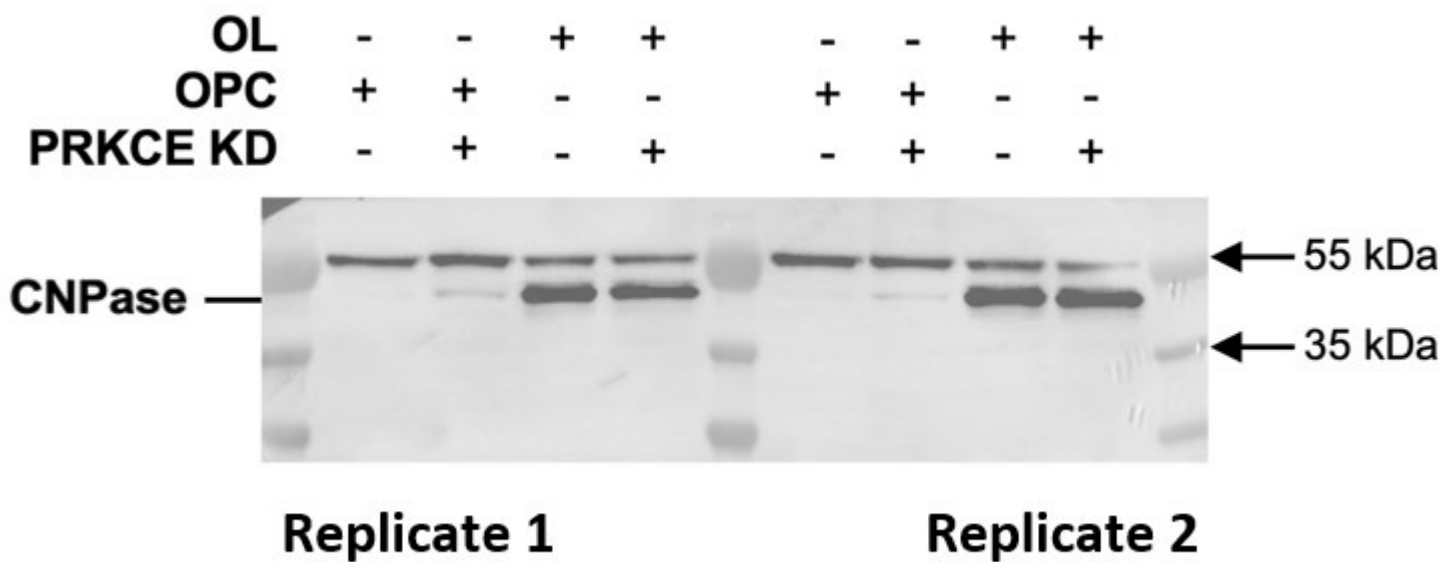
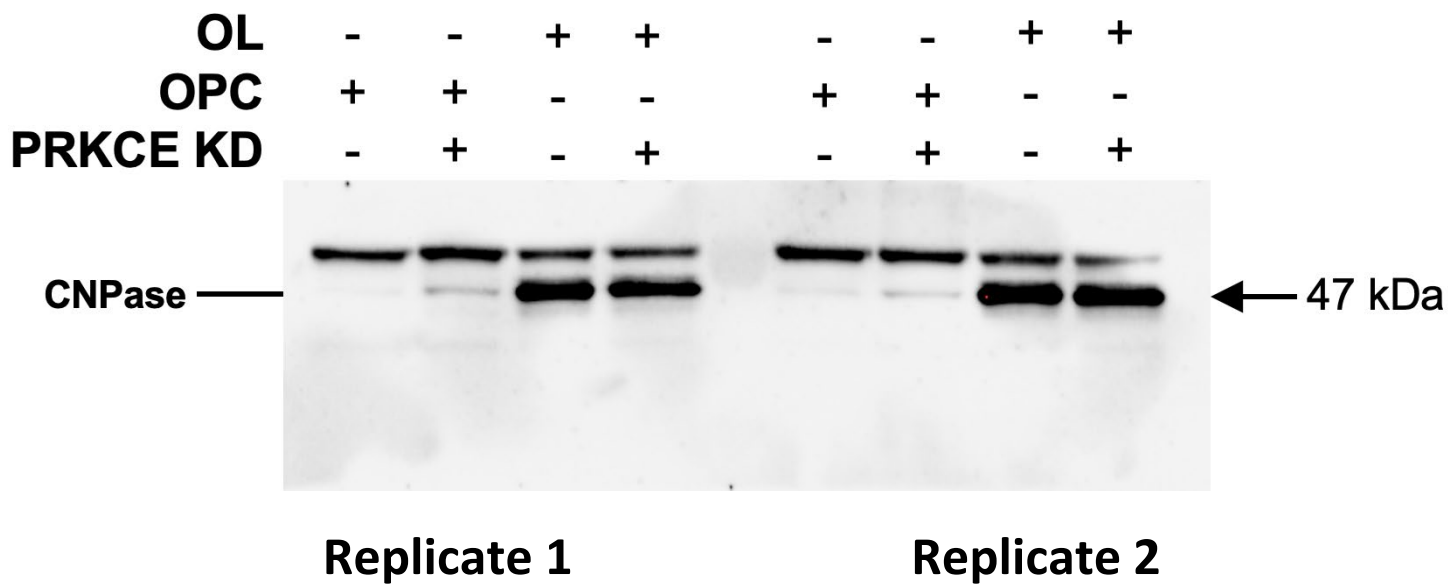


Figure 7i – in vitro WB MOG

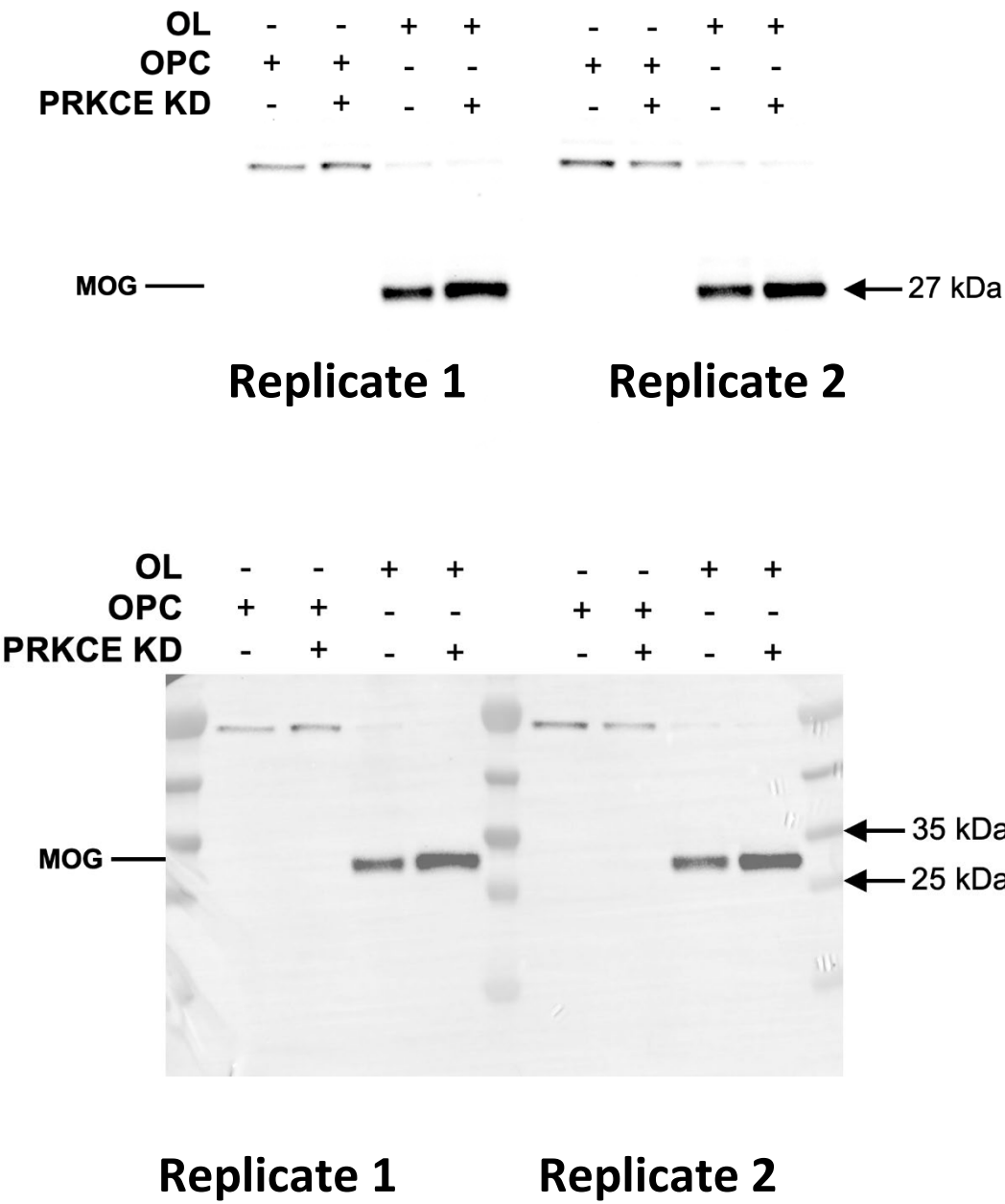


Figure 7i – in vitro WB OLIG2

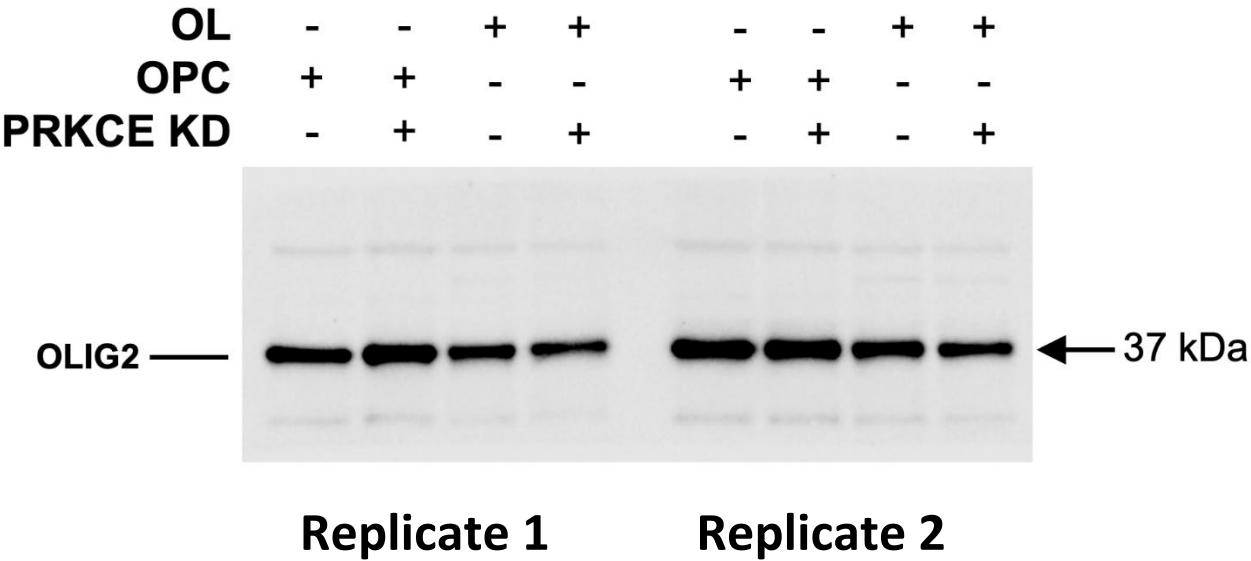


Figure 7i – in vitro WB PRKCE

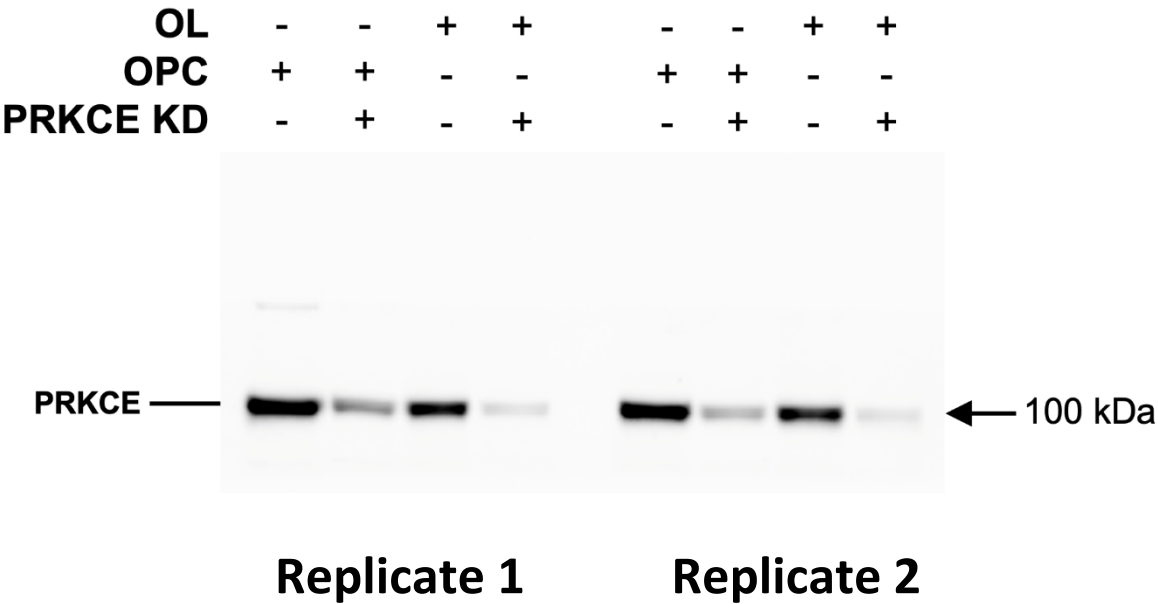
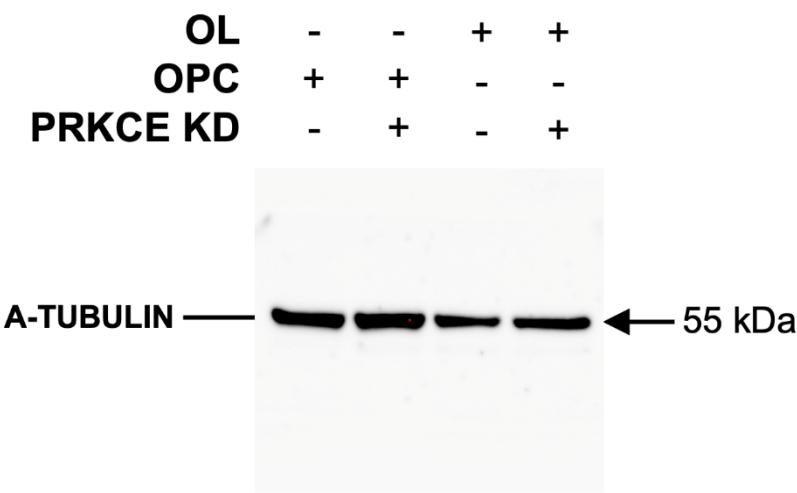
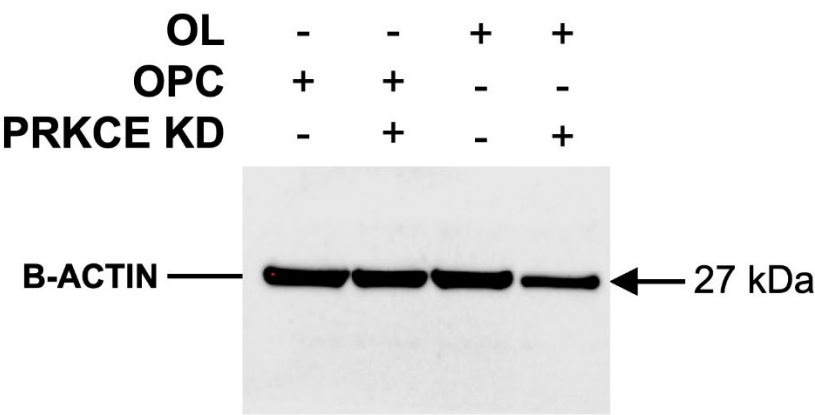


Figure 7i – in vitro WB A-TUBULIN



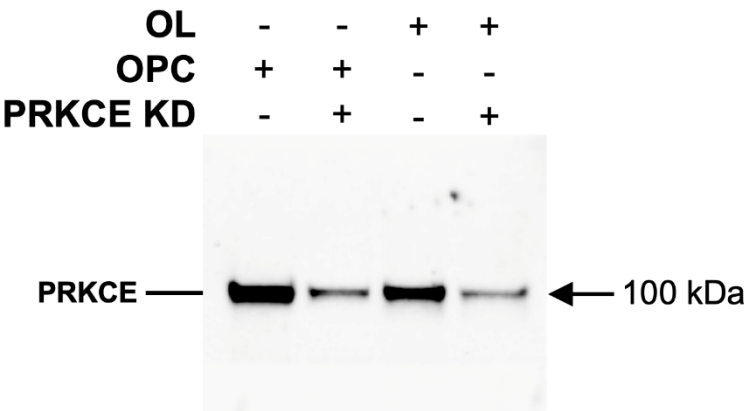
Replicate 3

Figure 7i – in vitro WB B-ACTIN



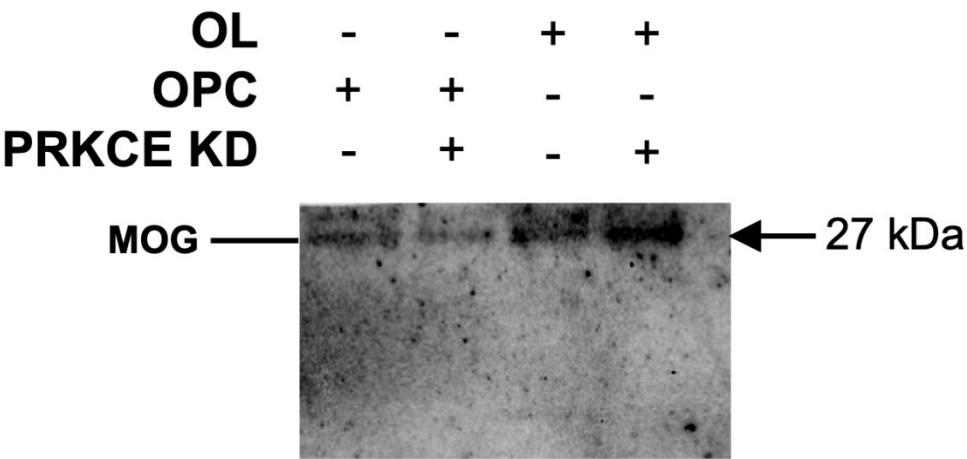
Replicate 3

Figure 7i – in vitro WB PRKCE



Replicate 3

Figure 7i – in vitro WB MOG



Replicate 3

Original

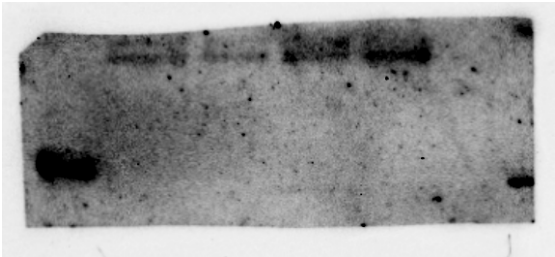
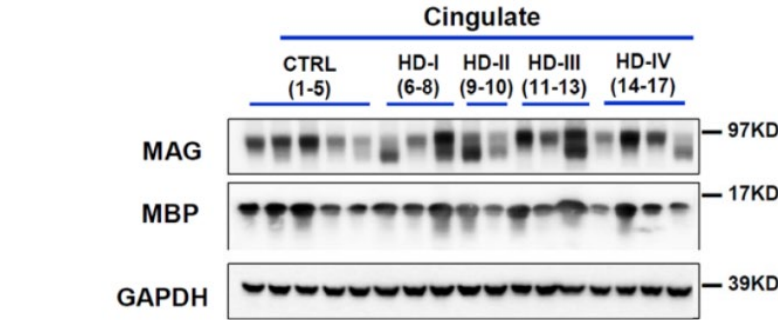
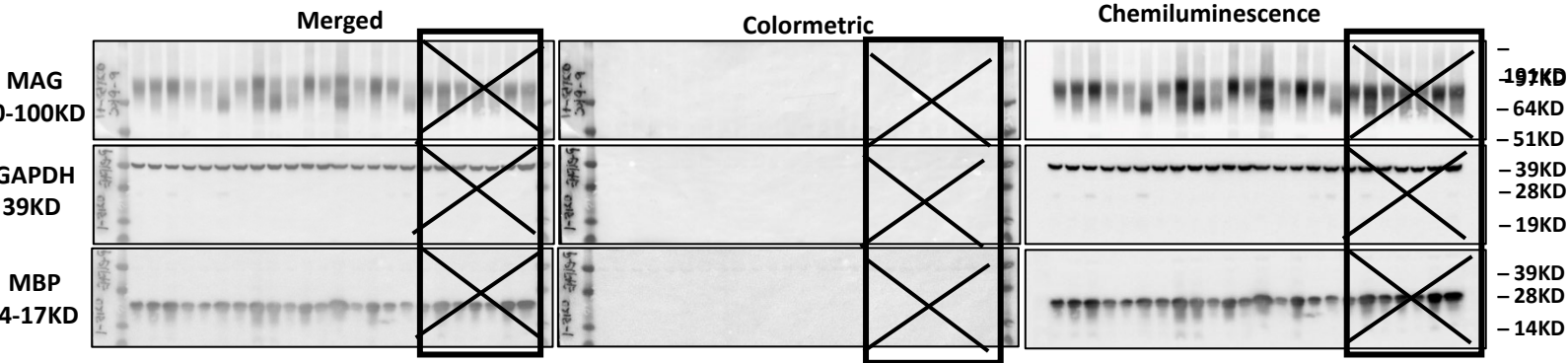
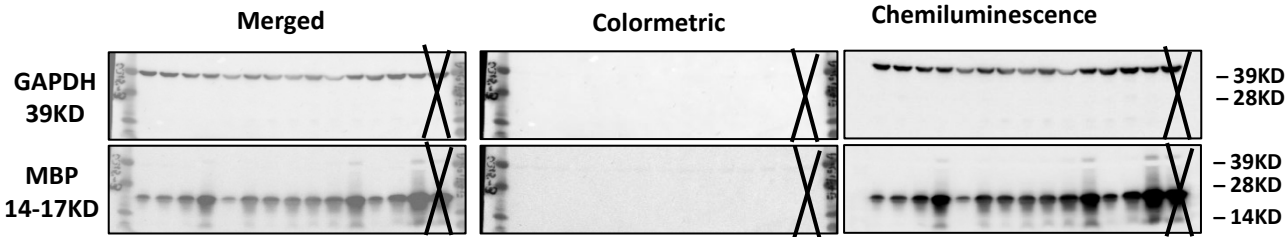


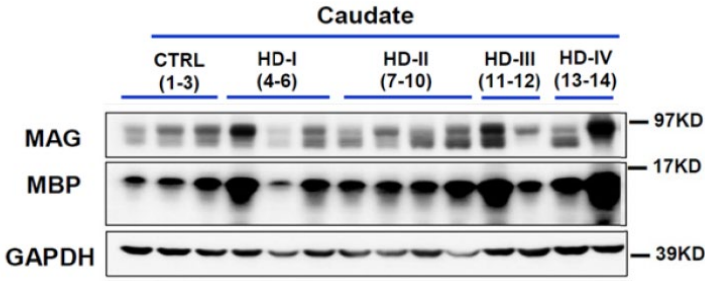
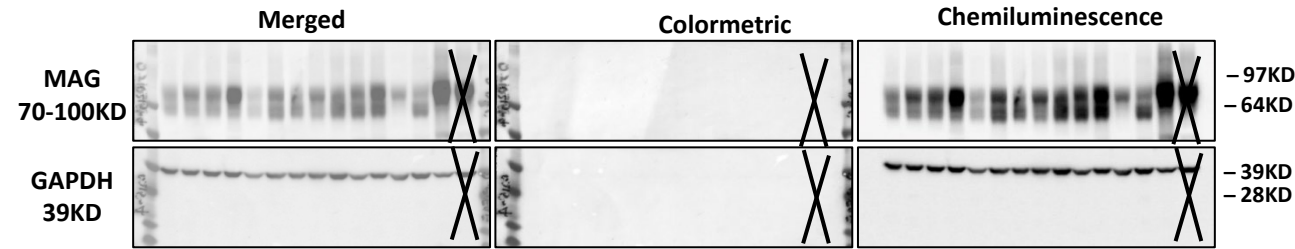
Figure S8B - 0215-1 MAG – GAPDH - MBP



0215-3 p-PKCε - GAPDH - MBP

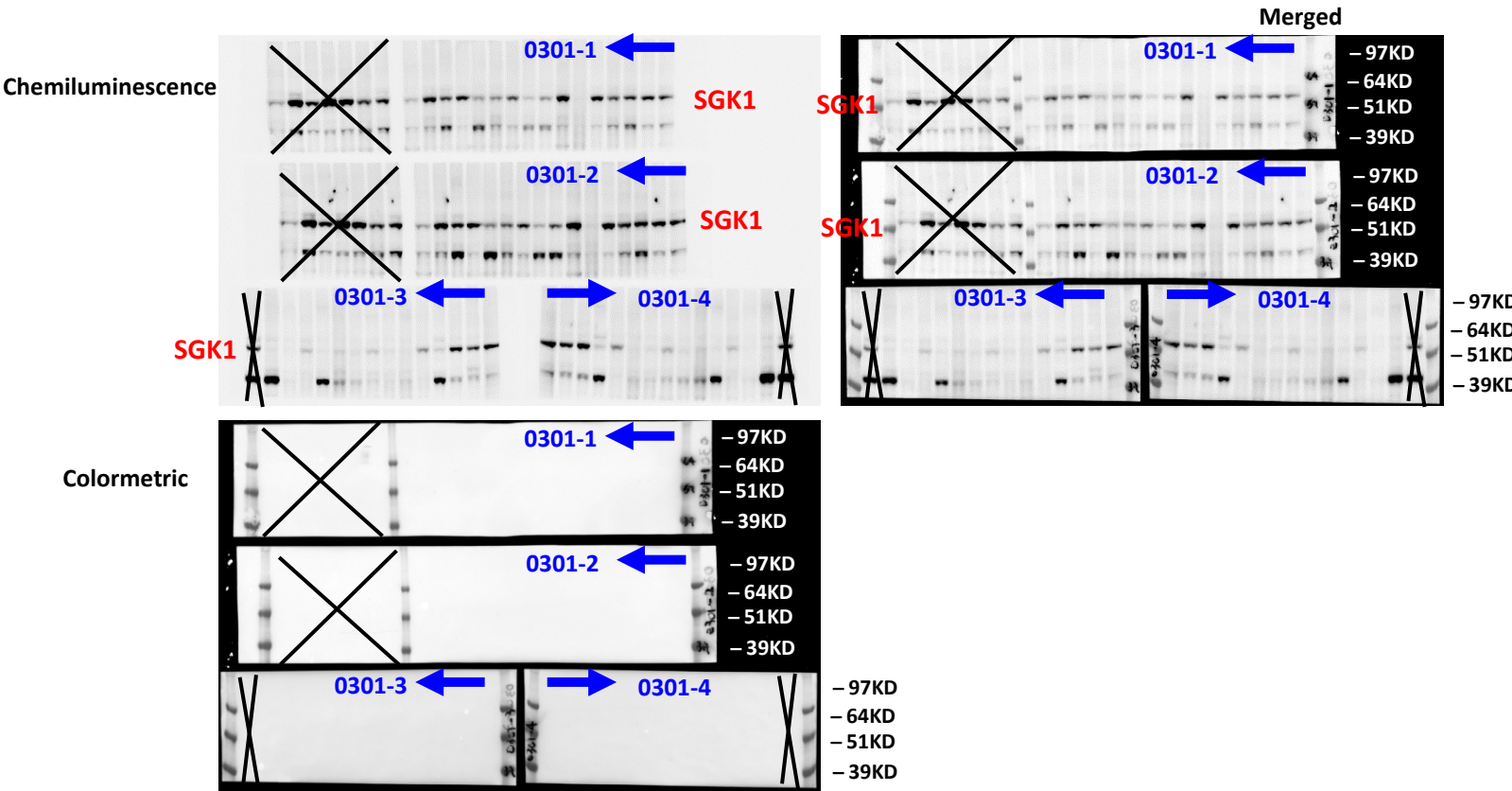


0215-4 MAG – GAPDH

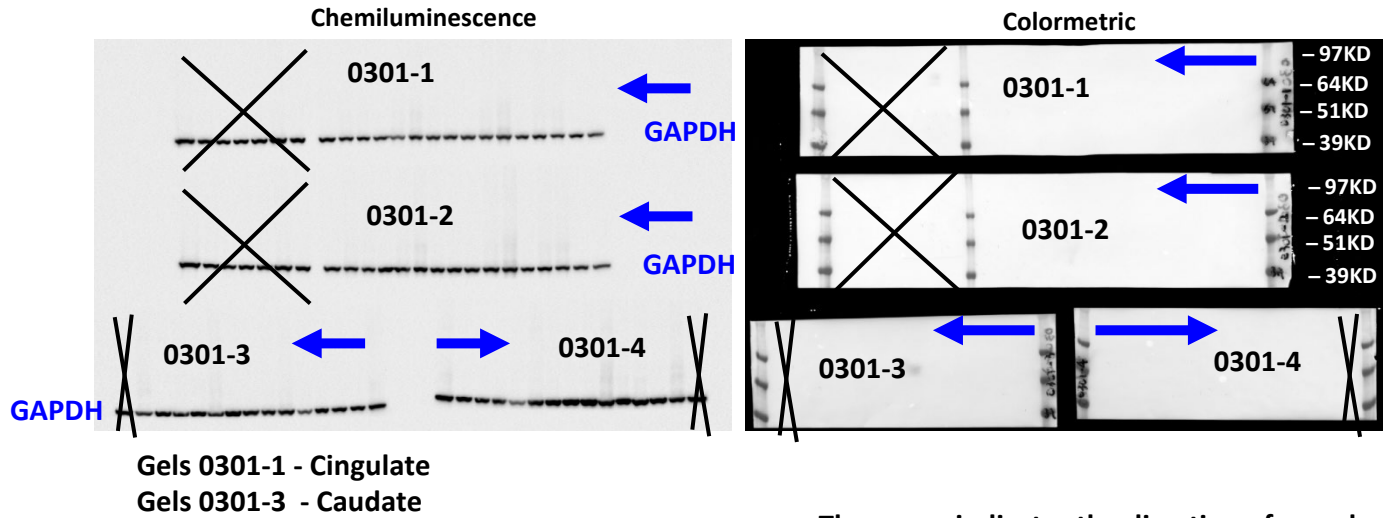


“X” indicates samples that are of a different condition not related to the study

Figure S8B - Gels 0301 – 0304, SGK1, ~50-60KD



0301 – 0304, GAPDH, 39KD – used for calculating relative abundance of protein – presented in quantifications

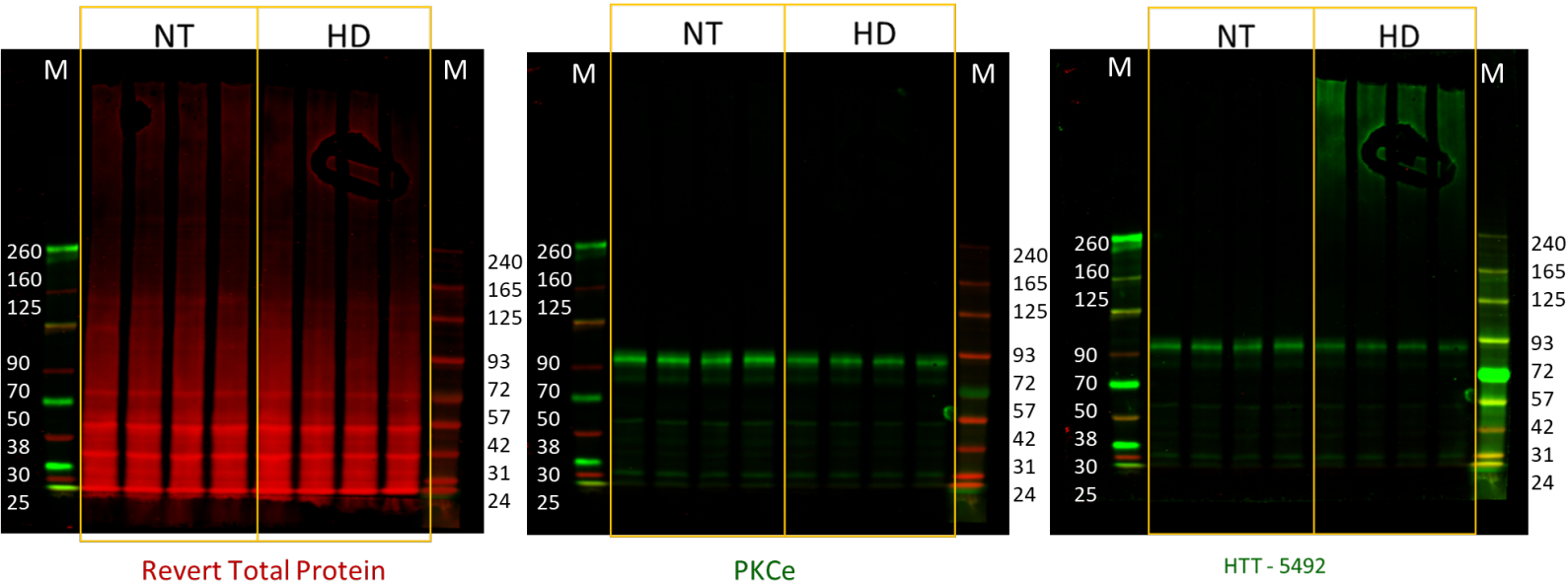


The arrow indicates the direction of samples with respect to those in the figure – right pointing arrow means same order, left pointing arrow indicates reverse order

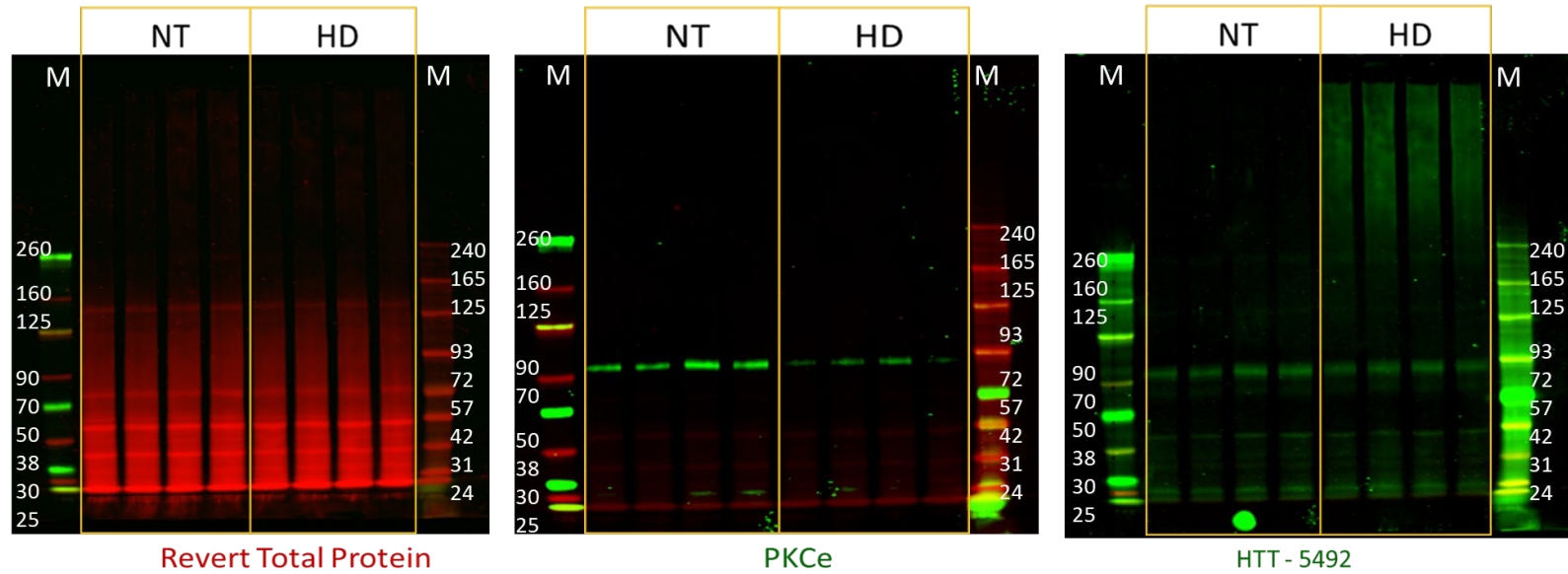
“X” indicates samples of a different condition not related to the study

Gels 0301-1 and 0301-2 are duplicates
Gels 0301-3 and 0301-4 are duplicates

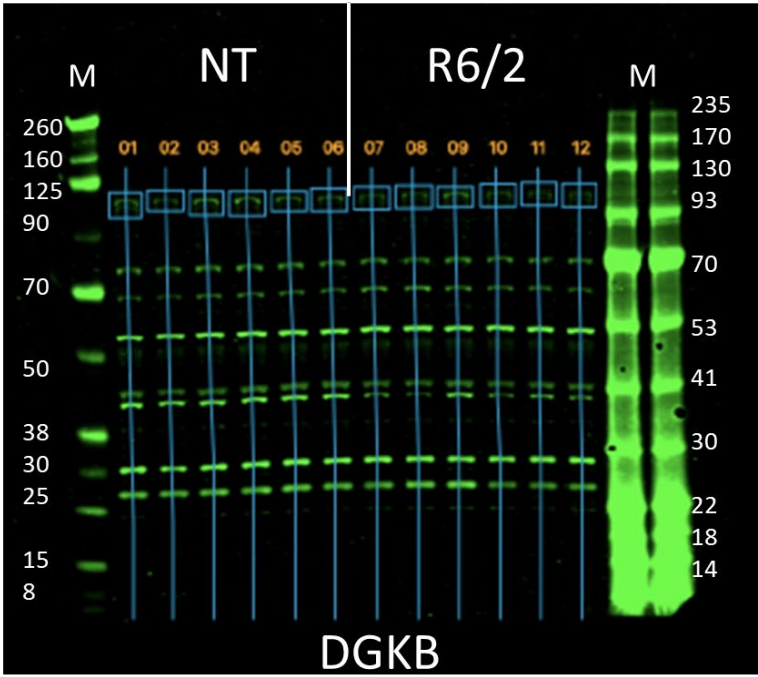
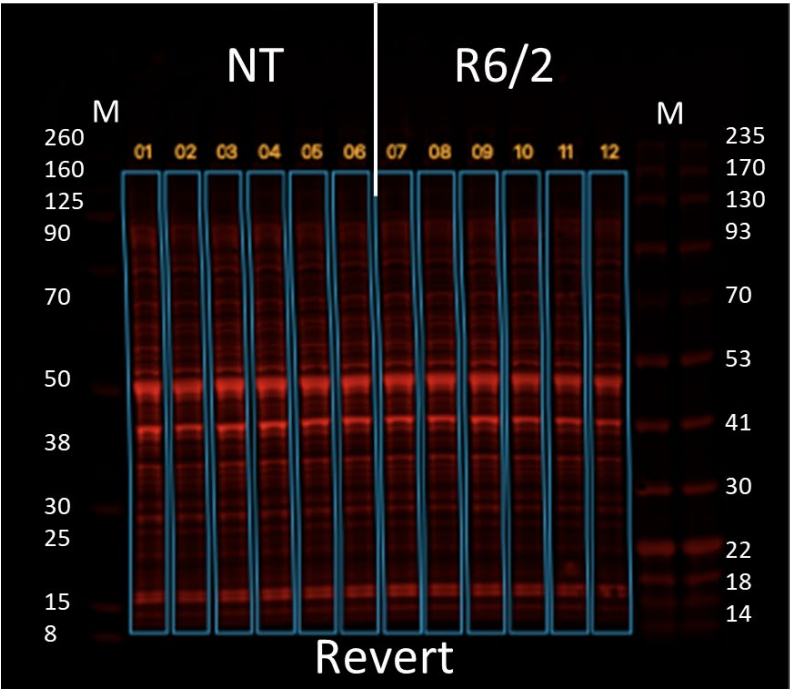
5492 and Prkce insolb Cortex R6/2



5492 and Prkce insolb Striatum R6/2



DGKB Cortex R6/2



DGKB Striatum R6/2

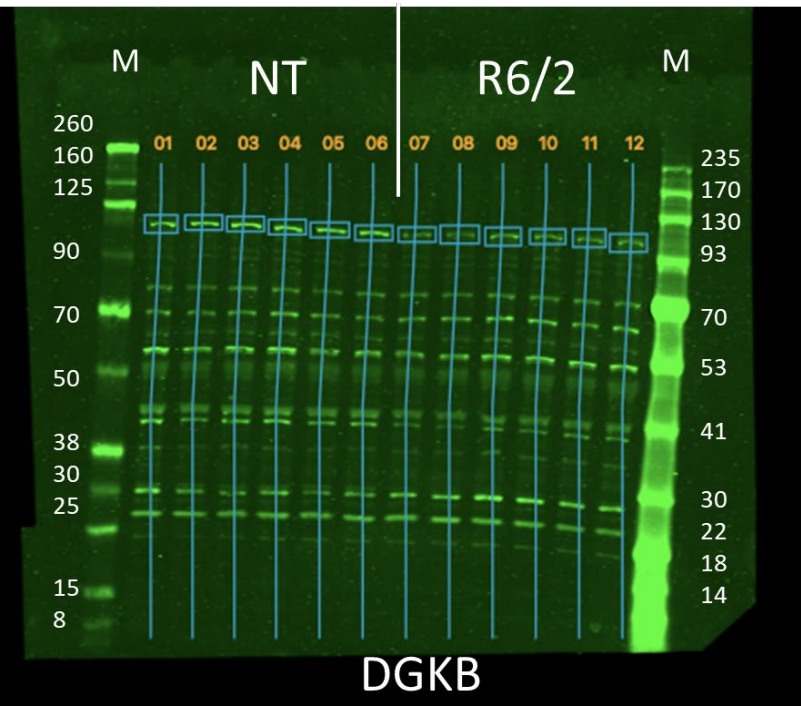
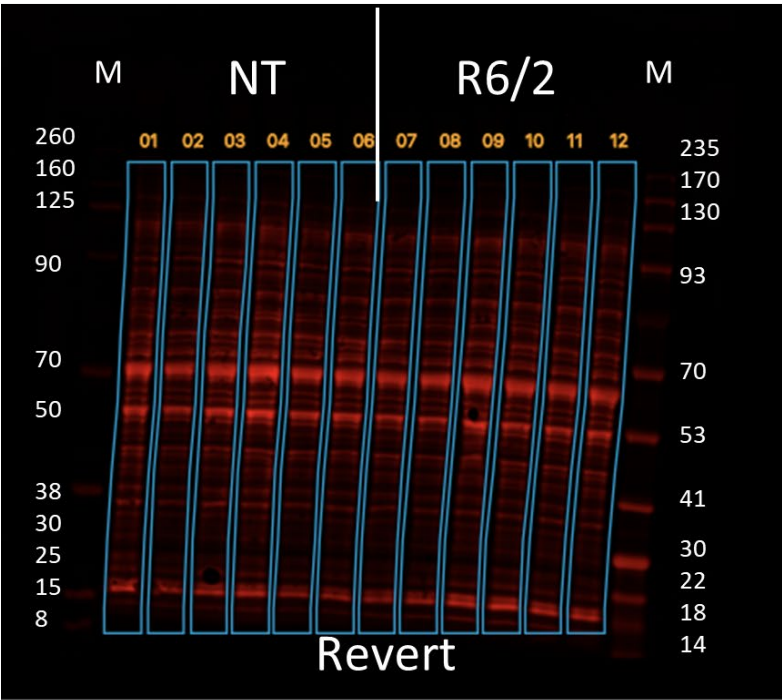
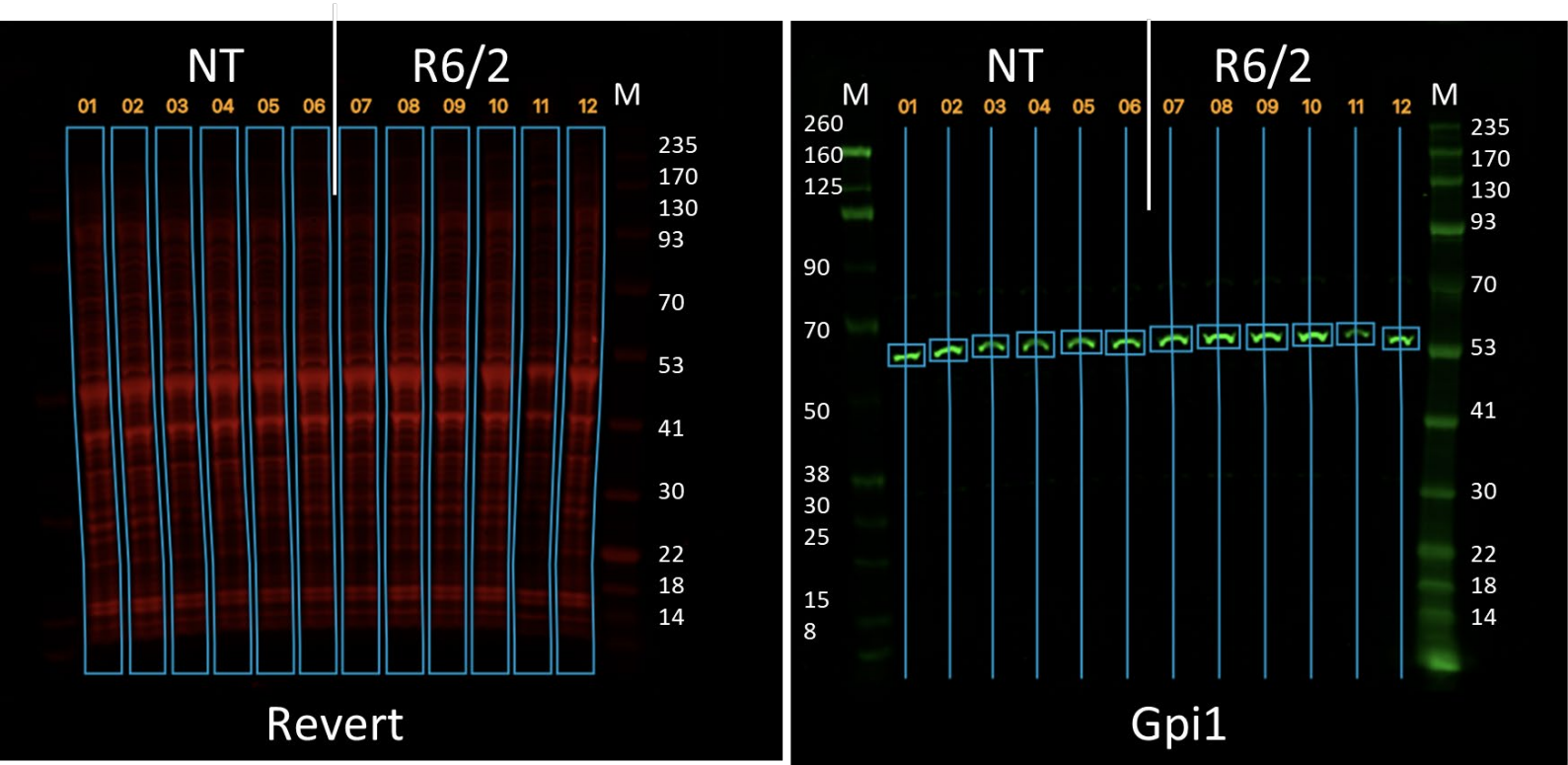
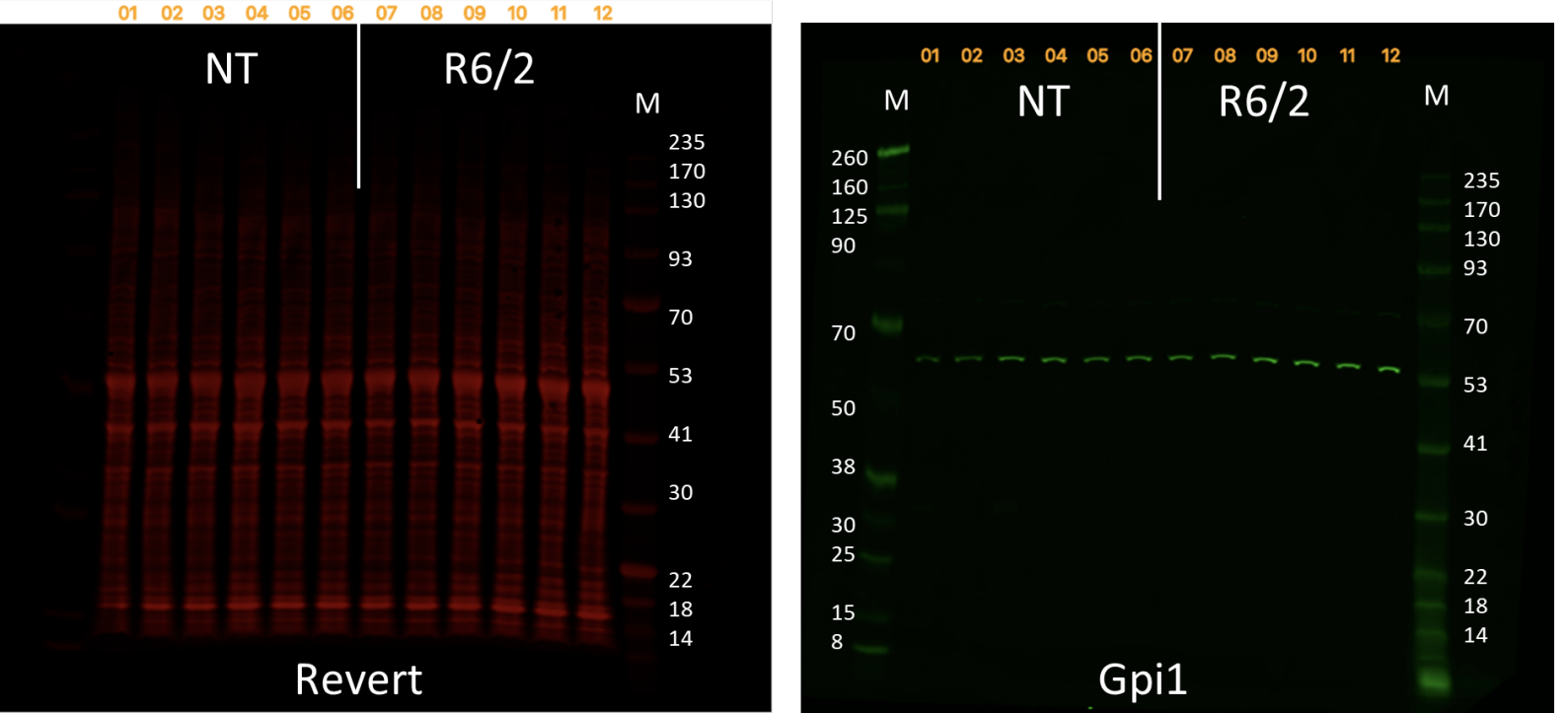


Figure S9e - GPI – Revert (cortex & striatum)

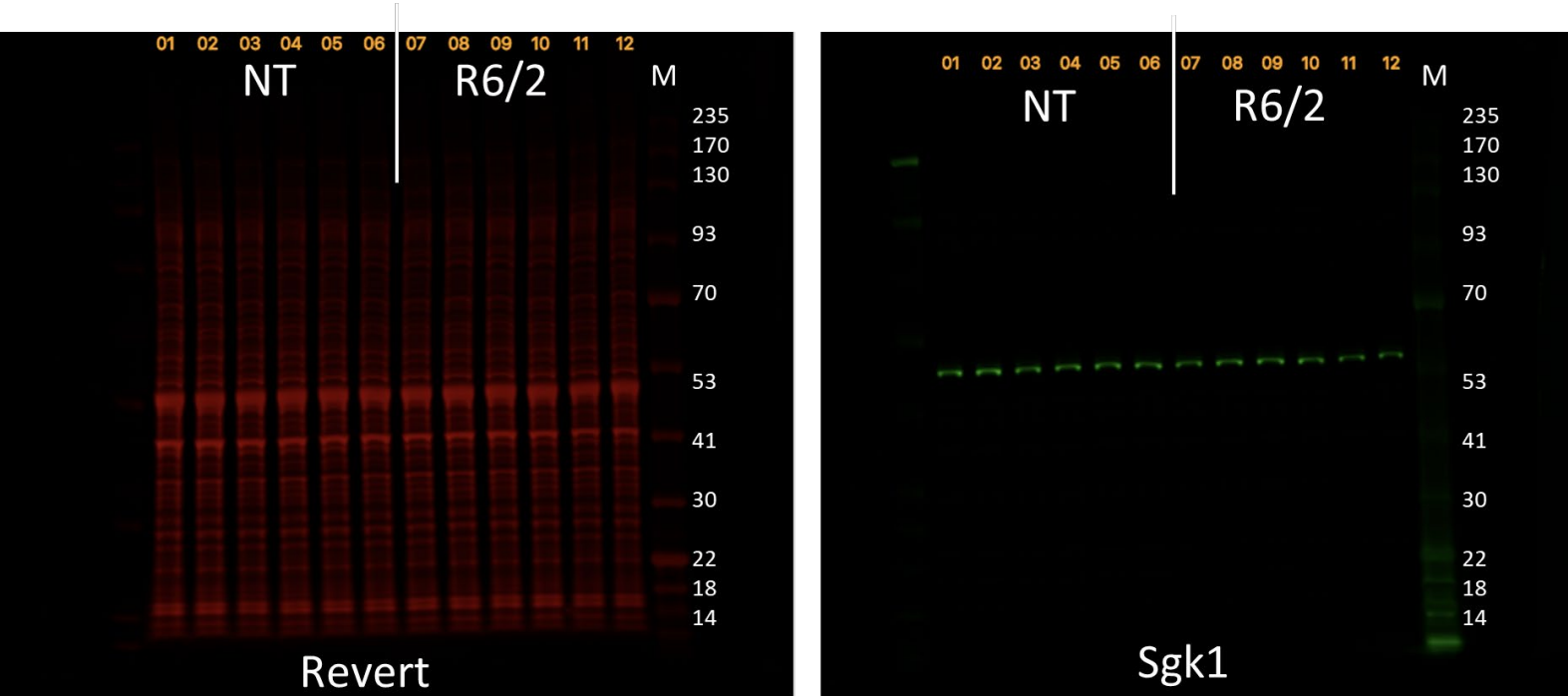
Gpi1 Cortex R6/2



Gpi1 Striatum R6/2



Sgk1 Cortex R6/2



Sgk1 Striatum R6/2

