
Supplementary information

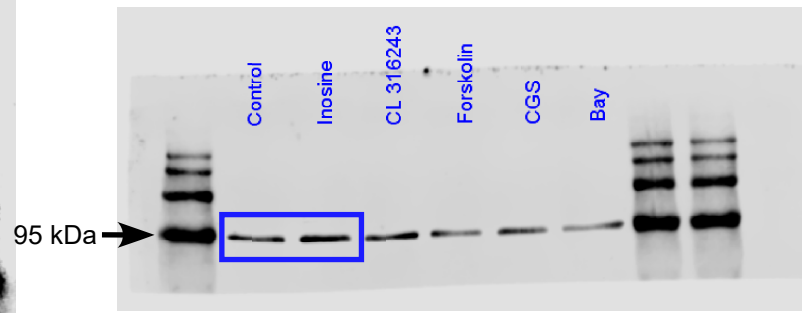
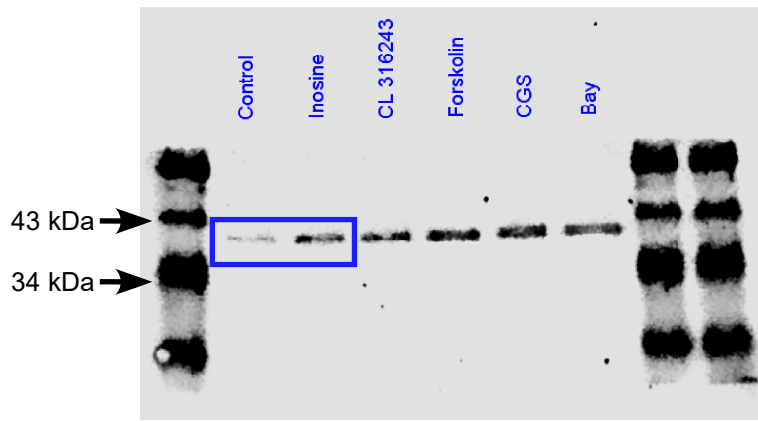
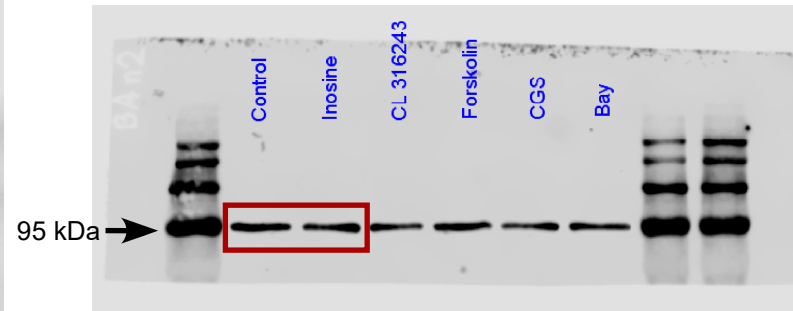
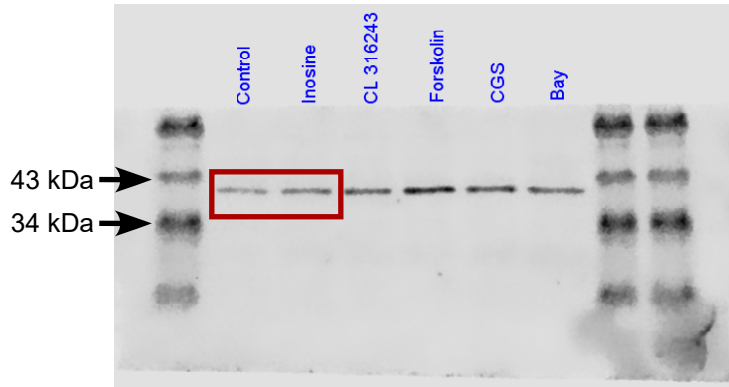
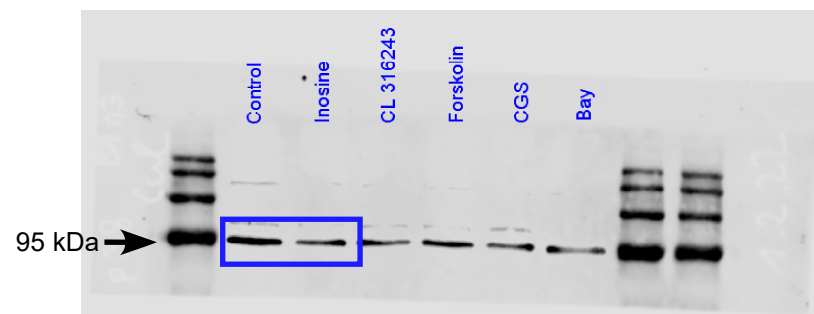
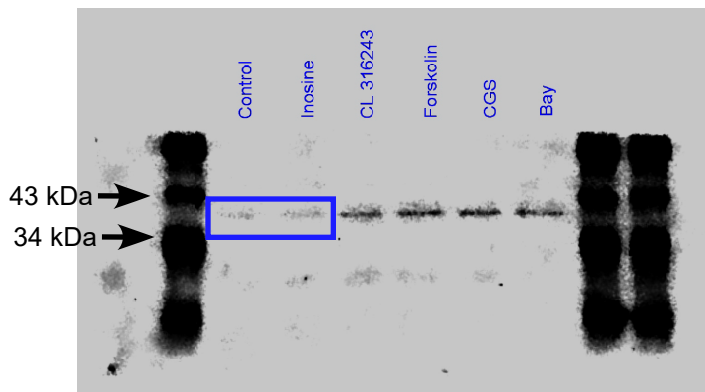
Apoptotic brown adipocytes enhance energy expenditure via extracellular inosine

In the format provided by the authors and unedited

a

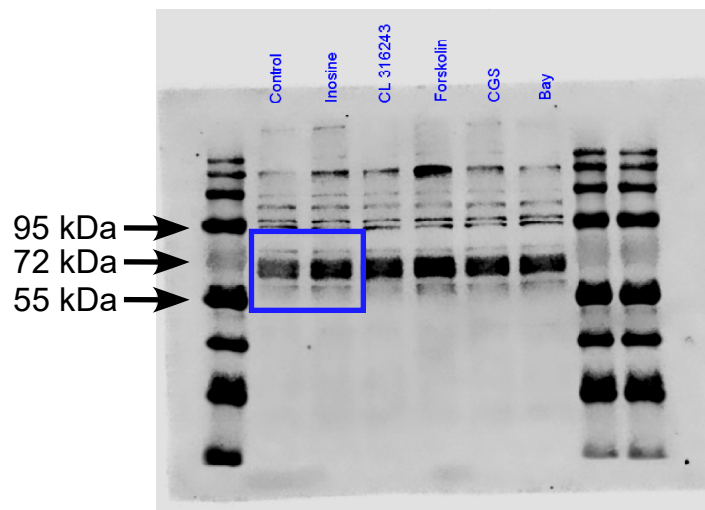
P-p38

Calnexin

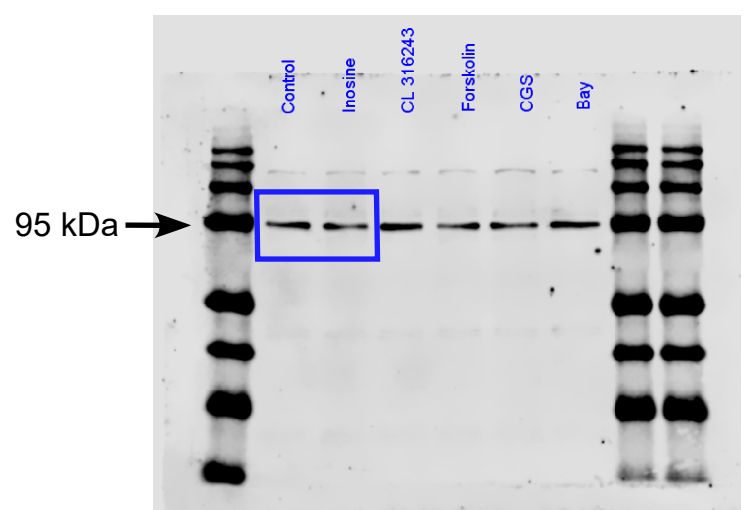
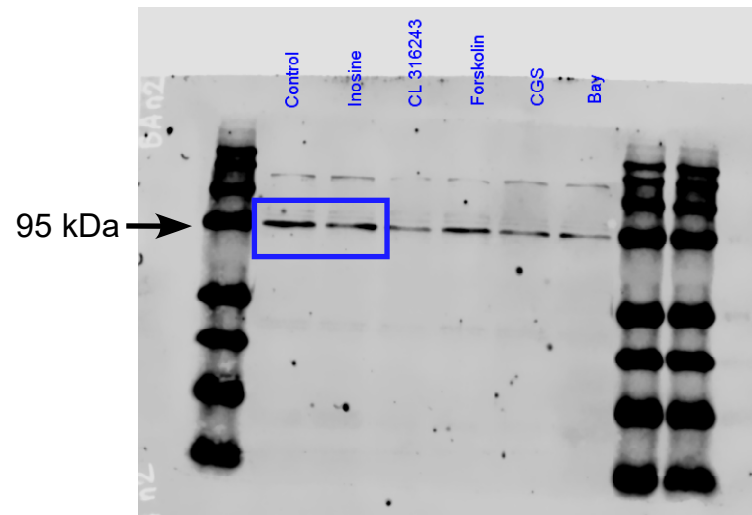
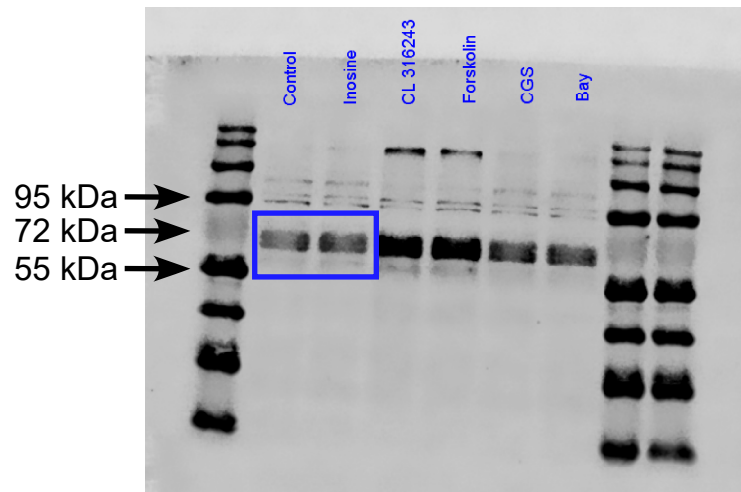
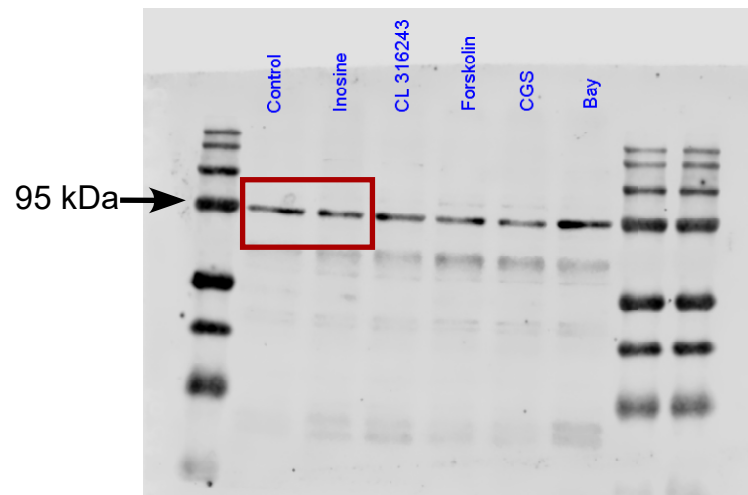
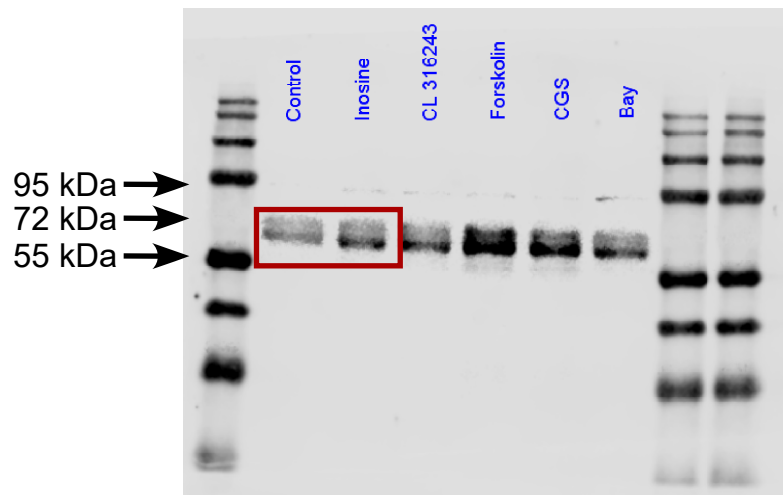
**b****c**

d

P-ATF2



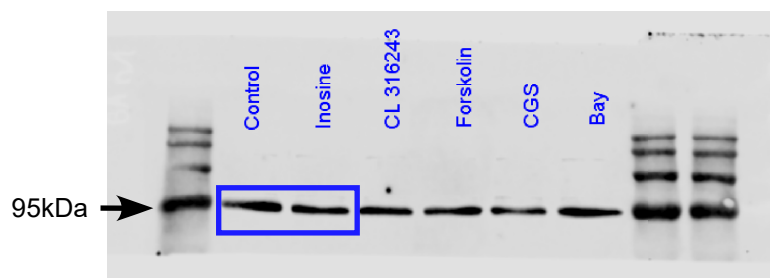
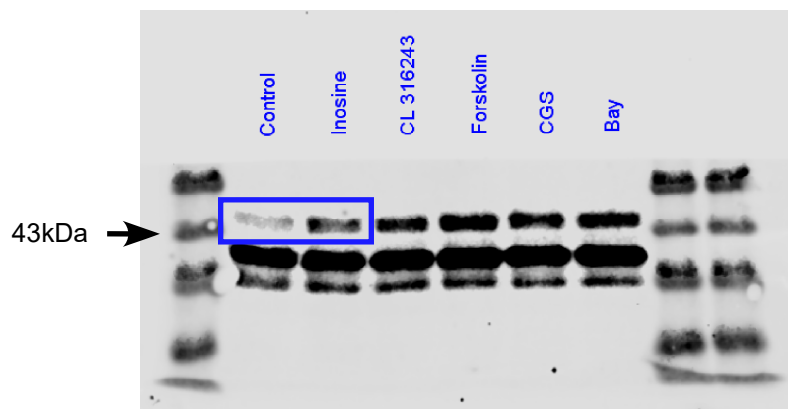
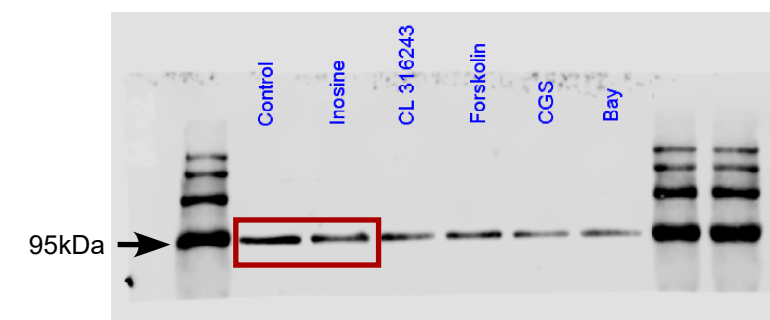
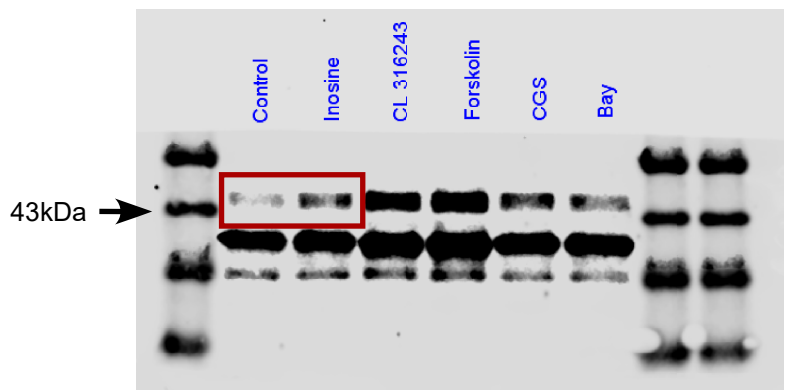
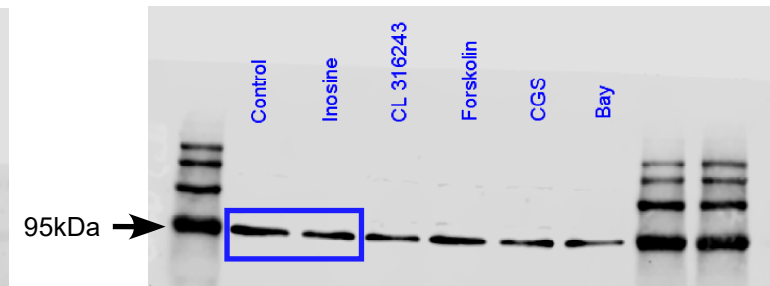
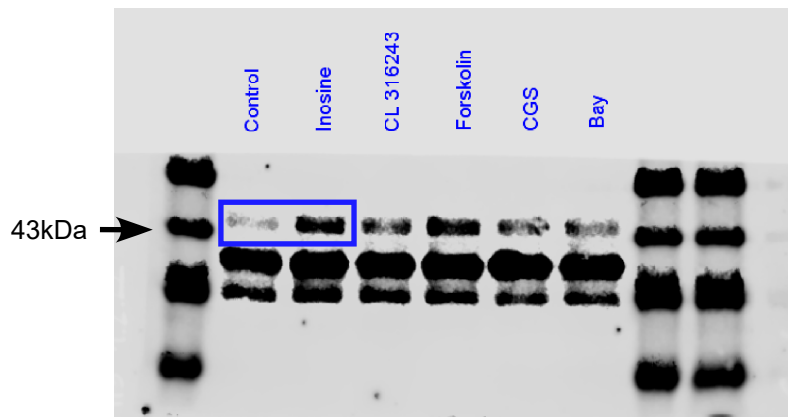
Calnexin

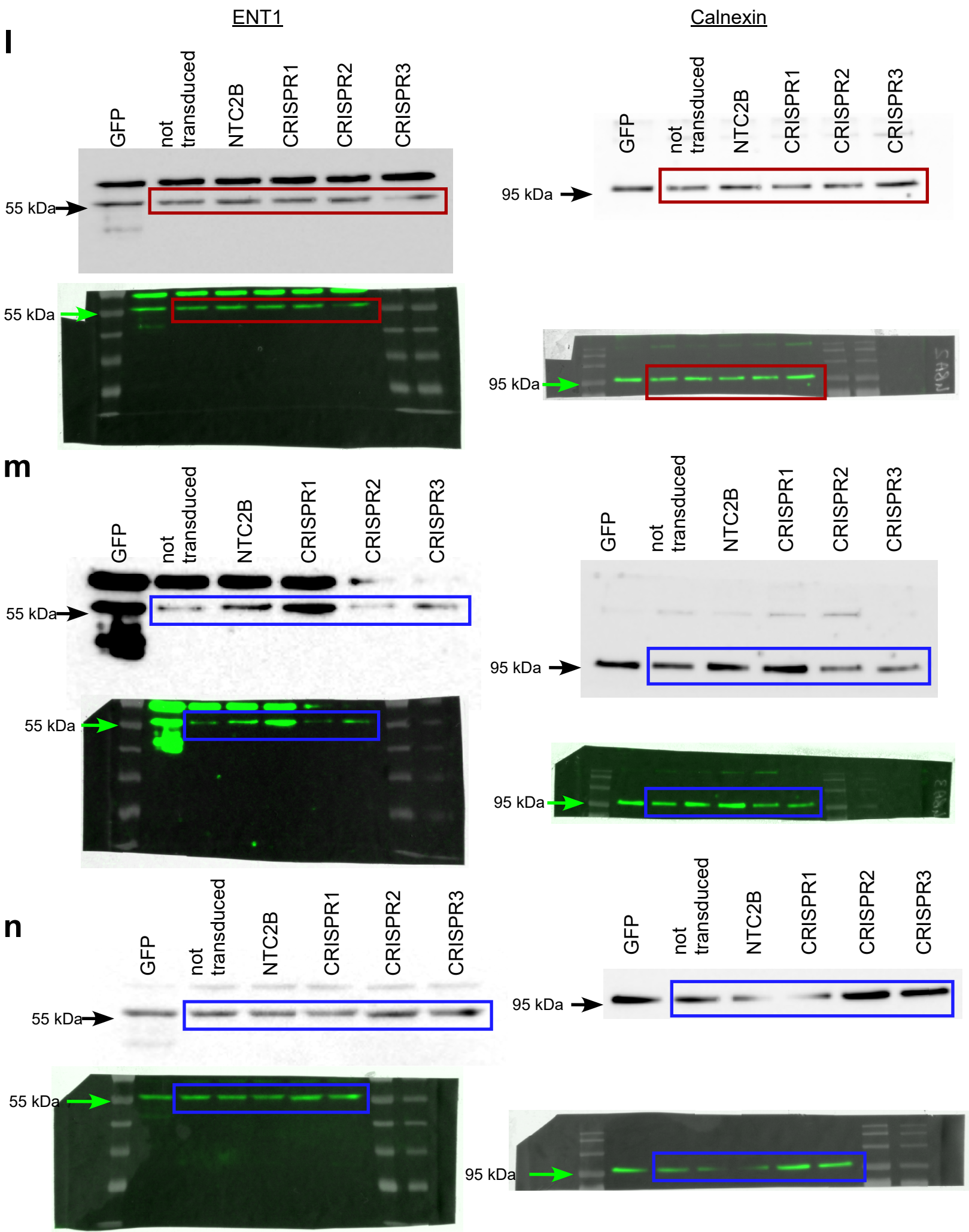
**e****f**

g

P-Creb

Calnexin

**h****i**



Supplementary Information

a-c Uncropped immunoblots of Extended Data Fig. 2e: P-p38 (left) and Calnexin (right), respectively. **d-f** Uncropped immunoblots of Extended Data Fig. 2f: P-ATF2 (left) and Calnexin (right), respectively. **g-i** Uncropped immunoblots of Extended Data Fig. 2g: P-Creb (left) and Calnexin (right), respectively. **j, k** Uncropped immunoblots of Extended Data Fig. 3d: **j** Calnexin (top band) and UCP1 (bottom band), **k** UCP1 (left) and Calnexin (right). **l-n** Uncropped immunoblots of Extended Data Fig. 6d and merged pictures of the immunoblots and respective molecular weight markers: ENT1 (left) and Calnexin (right), respectively.

All samples framed in red are represented in the original figure and were quantified. All samples framed in blue were quantified.