

Supplementary information for:

Fingolimod reduces circulating tight-junction protein levels and in vitro peripheral blood mononuclear cells migration in multiple sclerosis patients

PASQUALE ANNUNZIATA*, CHIARA CIONI, GIANNI MASI, MARISTELLA TASSI[°],
GIUSEPPE MAROTTA[°], SAURO SEVERI^{°°}

Department of Medicine, Surgery and Neurosciences, University of Siena, Italy

[°] Stem Cell Transplant and Cellular Therapy Unit, University Hospital, Siena, Italy

^{°°} Neurology Unit, San Donato Hospital, Arezzo, Italy

***Corresponding author:**

Pasquale Annunziata, MD

Dipartimento di Scienze Mediche, Chirurgiche e Neuroscienze

Università di Siena

Unità di Neuroimmunologia clinica

Viale Bracci, 2

53100 SIENA, ITALY

Tel.: +39-0577-233482

Supplementary Table S1

Correlation between serum tight-junction protein levels and clinical and MRI features

	RR at baseline	RR at T₁₂	EDSS at baseline	EDSS at T₁₂	New MRI T2-weighted lesions	MRI T1 GAD⁺ lesions
OCLN	0.01	0.34	-0.25	-0.27	-0.25	-0.14
CLN-5	-0.02	0.18	-0.31	-0.39	0.12	-0.12
ZO-1	-0.04	-0.14	0.32	0.23	-0.05	-0.23

RR = relapse rate; T₁₂ = at 12 months of therapy; EDSS = expanded disability status scale; GAD⁺ = gadolinium enhancing lesions; OCLN = occludin; CLN-5 = claudin-5; ZO-1 = zonula occludens -1. The results are expressed as r values. Spearman rank correlation was calculated. No r value is statistically significant.

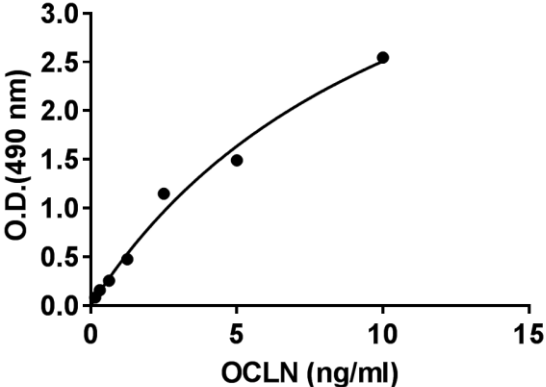
Supplementary Figure S1: Representative ELISA standard curves of recombinant occludin (OCLN) (A), claudin-5 (CLN-5) (B) and zonula occludens-1 (ZO-1) (C). O.D. = optical density.

Supplementary Figure S2: Titration ELISA curves of recombinant occludin (OCLN) (A), claudin-5 (CLN-5) (B) and zonula occludens-1 (ZO-1) (C). O.D. = optical density. NHS = normal healthy subjects. MS = multiple sclerosis. The results are expressed as mean absorbance values (read at 490 nm wavelength) \pm SEM of triplicate values of serum samples from 2 NHS and 2 MS patients. In all curves, background absorbance values obtained omitting serum samples were subtracted to the absorbance values of serum samples.

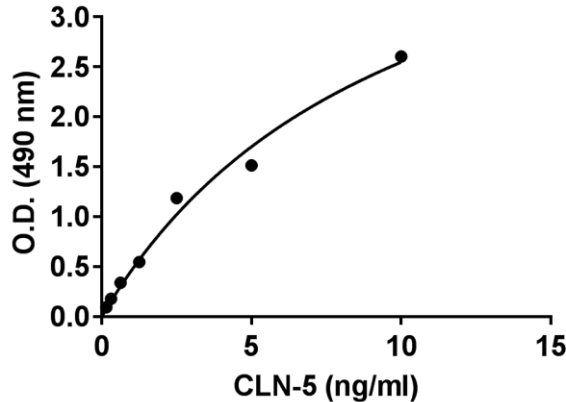
Supplementary Figure S3: Competitive ELISA of respective tight-junction proteins in the presence of increasing concentrations of occludin (OCLN) or bovine serum albumin (BSA) (A), of claudin-5 (CLN-5) or BSA (B) and of zonula occludens-1 (ZO-1) or BSA (C). O.D. = optical density. Each point is the mean of triplicate values.

Supplementary Figure S1

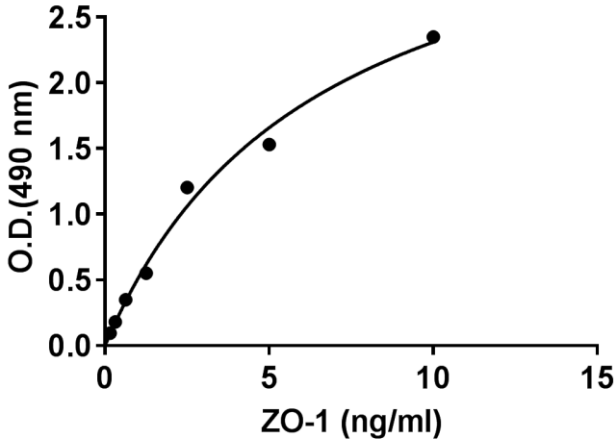
A



B

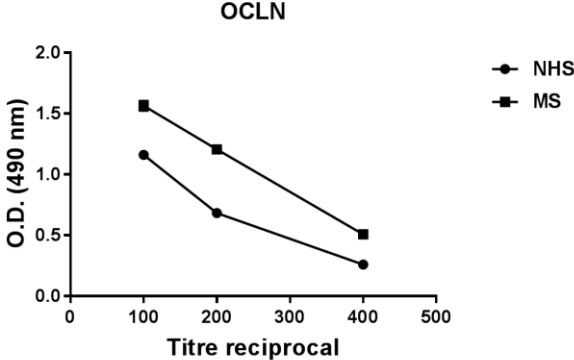


C

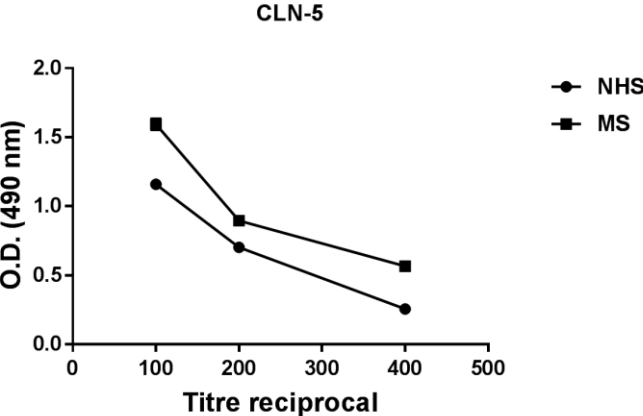


Supplementary Figure S2

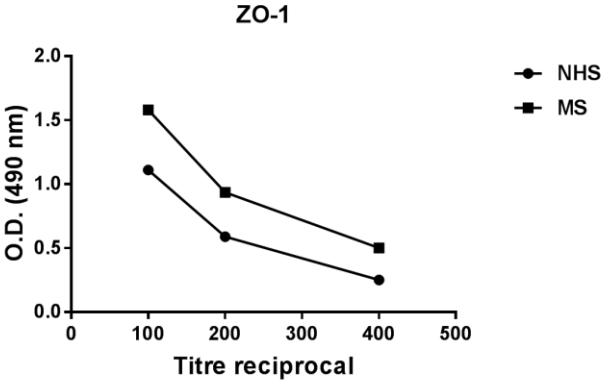
A



B

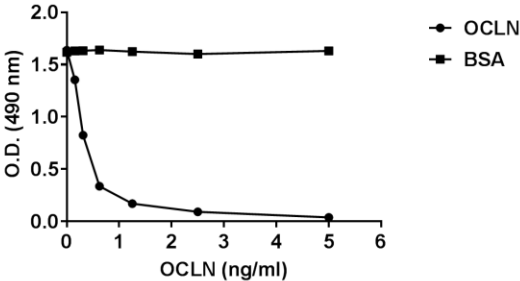


C

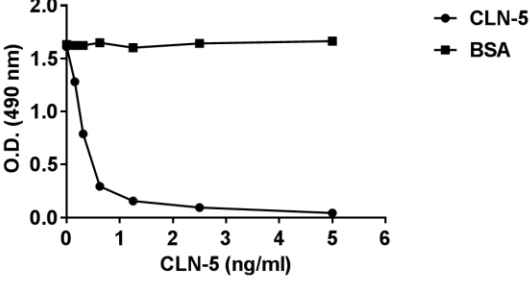


Supplementary Figure S3

A



B



C

