

SUPPLEMENTARY INFORMATION

Sensitive Protein Misfolding Cyclic Amplification of Sporadic Creutzfeldt-Jakob disease Prions is Strongly Seed and Substrate Dependent

Maxime B elondrade¹, Simon Nicot¹, Charly Mayran¹, Lilian Bruy ere-Ostells¹, Florian Almela¹, Michele A. Di Bari², Etienne Levavasseur³, Joel C. Watts⁴, Chantal Fournier-Wirth¹, Sylvain Lehmann⁵, St ephane Haik³, Romolo Nonno², Daisy Bougard^{1*}

¹Pathogenesis and control of chronic infections, Universit e de Montpellier, Etablissement Fran ais du Sang, Inserm, Montpellier, France

²Department of Food Safety, Nutrition and Veterinary Public Health, Istituto Superiore di Sanita, Rome, Italy

³Inserm U 1127, CNRS UMR 7225, Sorbonne Universit es, UPMC Universit e Paris 06 UMR S 1127, Institut du Cerveau et de la Moelle  pini ere, Paris, France

⁴Tanz Centre for Research in Neurodegenerative Diseases and Department of Biochemistry, University of Toronto, Toronto, Canada

⁵IRMB, INM, Univ Montpellier, INSERM, CHU Montpellier, (LBPC-PPC), Montpellier, France

*Address correspondence to Daisy Bougard, daisy.bougard@efs.sante.fr.

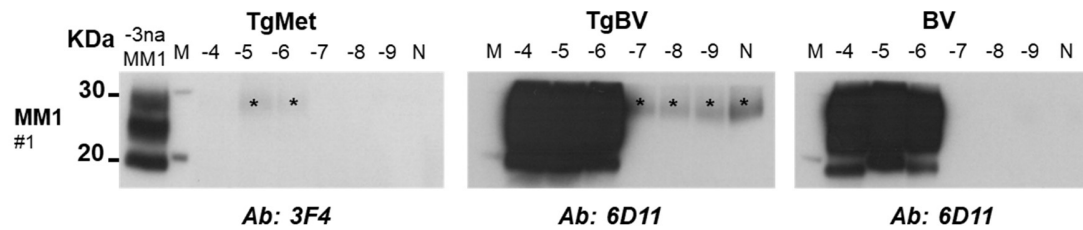
Supplementary Table S1: Summary of patients included in the PMCA brain study

Id	Classification	Gender	Age	Diagnosis	Disease duration
#1	MM1	F	78	Definite sCJD	3 months
#2	MM1	F	65	Definite sCJD	3 months
#3	MM1	F	52	Definite sCJD	2 months
#4	MM2	M	67	Definite sCJD	17 months
#5	MM2	M	68	Definite sCJD	13 months
#6	MV1	M	62	Definite sCJD	17 months
#7	MV1	M	74	Definite sCJD	2 months
#8	MV2	F	58	Definite sCJD	10 months
#9	MV2	F	64	Definite sCJD	16 months
#10	VV1	M	63	Definite sCJD	5 months
#11	VV1	F	33	Definite sCJD	19 months
#12	VV2	F	76	Definite sCJD	7 months
#13	VV2	M	60	Definite sCJD	6 months
#14	VV2	M	75	Definite sCJD	4 months
#15	MM2B	na	na	Definite vCJD	na

Supplementary Table S2: Summary of patients included in the CSF study

Id	Classification	Gender	Age	Diagnosis	CSF 14-3-3
§1	MM	M	86	Probable sCJD	Positive
§2	MM	F	75	Probable sCJD	Positive
§3	MM1	M	67	Definite sCJD	Positive
§4	MM1	M	68	Definite sCJD	Positive
§5	MM2	M	65	Definite sCJD	Positive
§6	VV2	M	77	Definite sCJD	Positive
§7	VV	F	70	Probable sCJD	Positive
§8	VV	M	79	Probable sCJD	Positive
§9	MM2B	F	27	Definite vCJD	Negative

Supplementary Figure S1: PMCA amplification of sCJD MM1 in TgMet, BV and TgBV



Serial dilutions from 10^{-4} to 10^{-9} of the MM1 subtype sCJD homogenate (#1) were amplified using TgMet, TgBV or BV substrates. After 4 rounds of PMCA, the PrP^{TSE} signal was analyzed by western blot after proteinase K digestion using 3F4 or 6D11 antibodies as indicated. For each sample, 20 μ L of the product were loaded onto the gel. -3na MM1 refers to non-amplified material (no PMCA) obtained from the 10^{-3} dilution (w/v) of the initial infectious brain sample of the MM1 subtype sCJD patient #1. N refers to unseeded substrate amplified in the same conditions. The asterisk indicates a faint signal from incomplete PrP^C digestion. M indicates the typical molecular mass of PrP^{res} in the range of 20 to 30 kDa.

Supplementary uncropped original blots

Figure 1

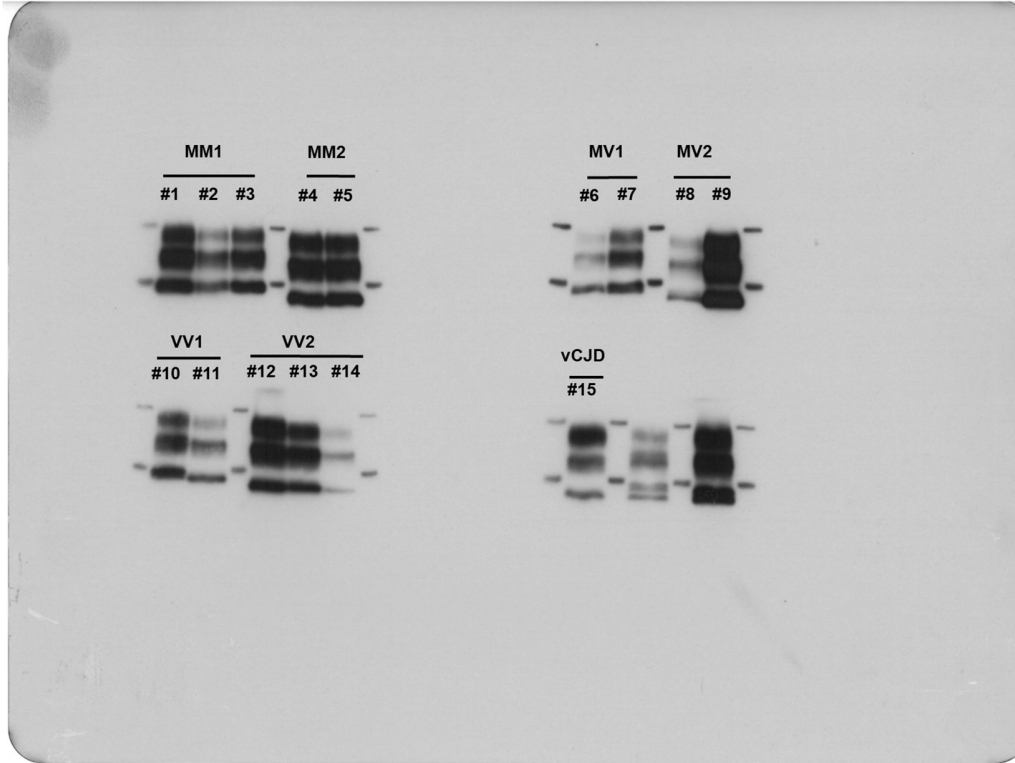
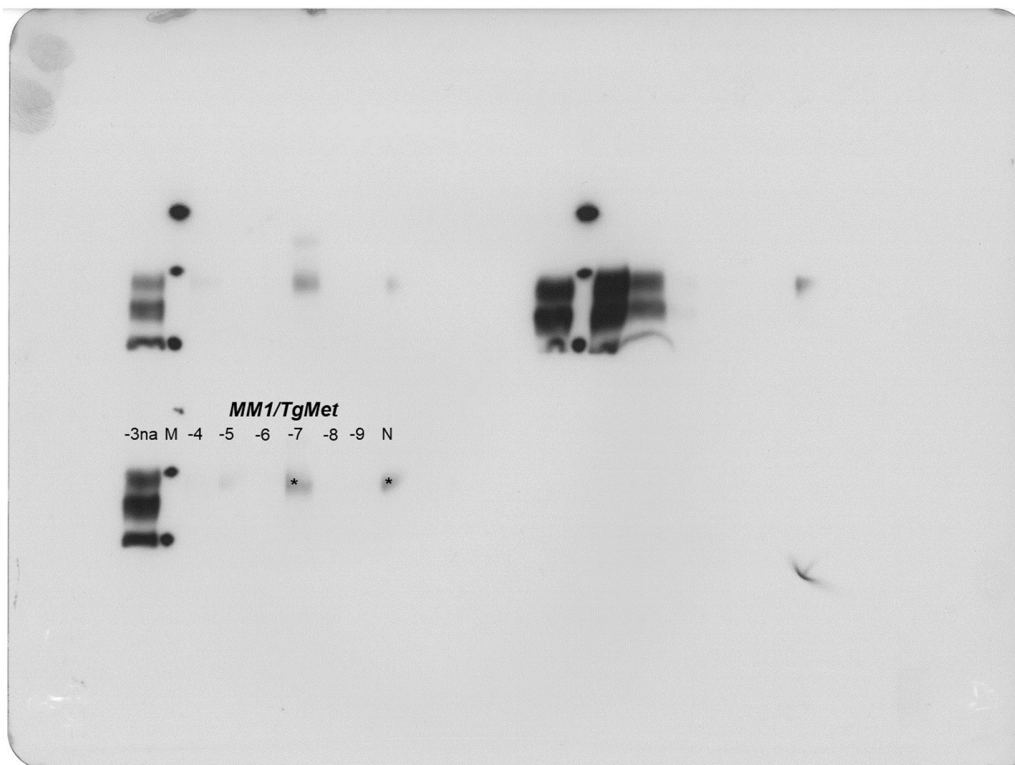
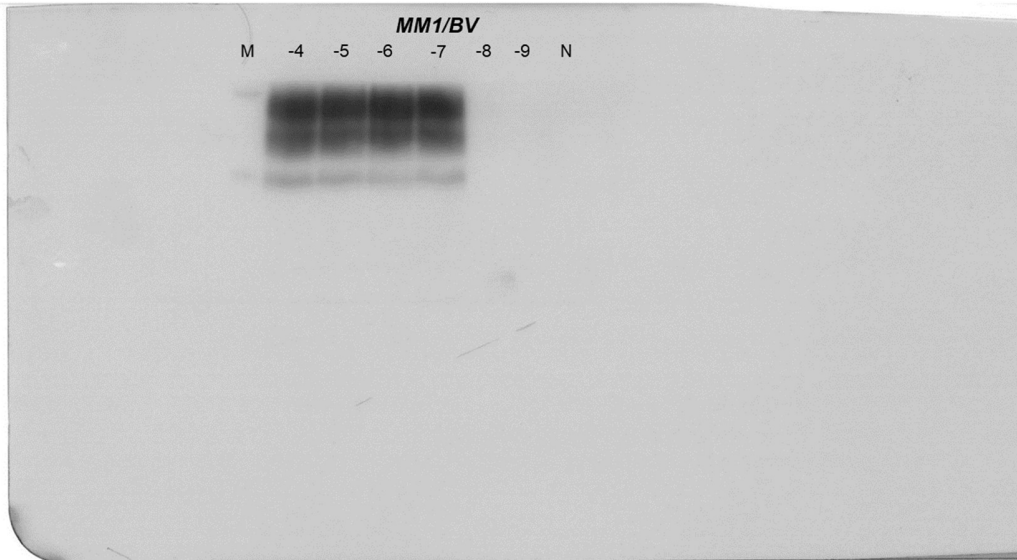
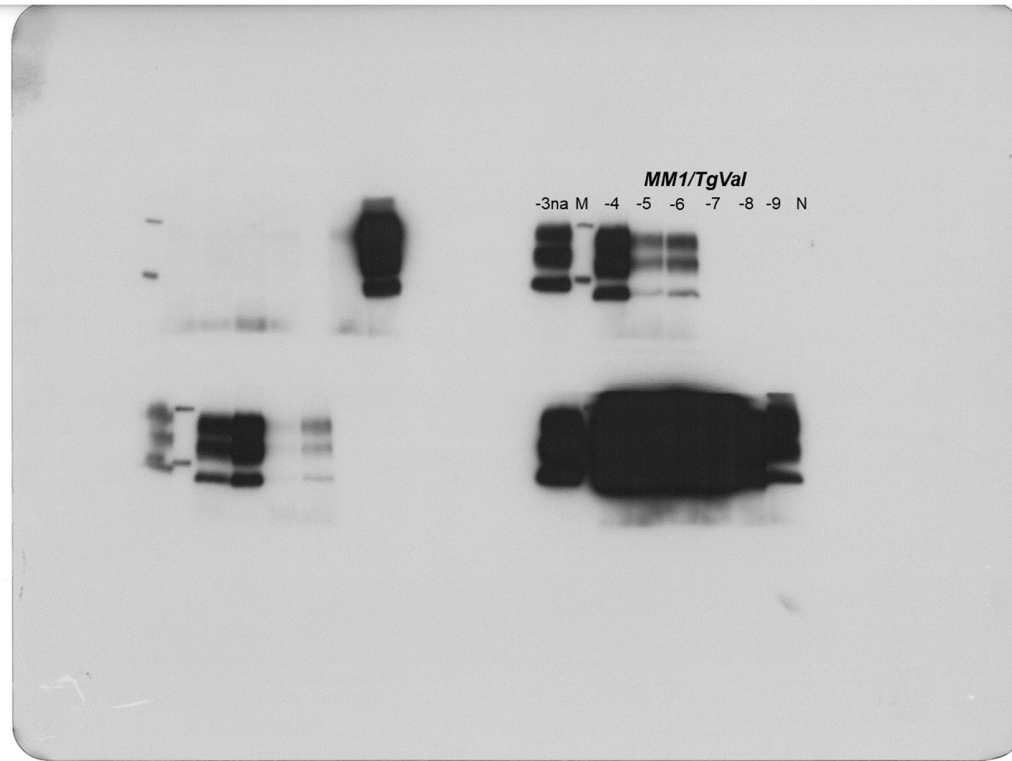
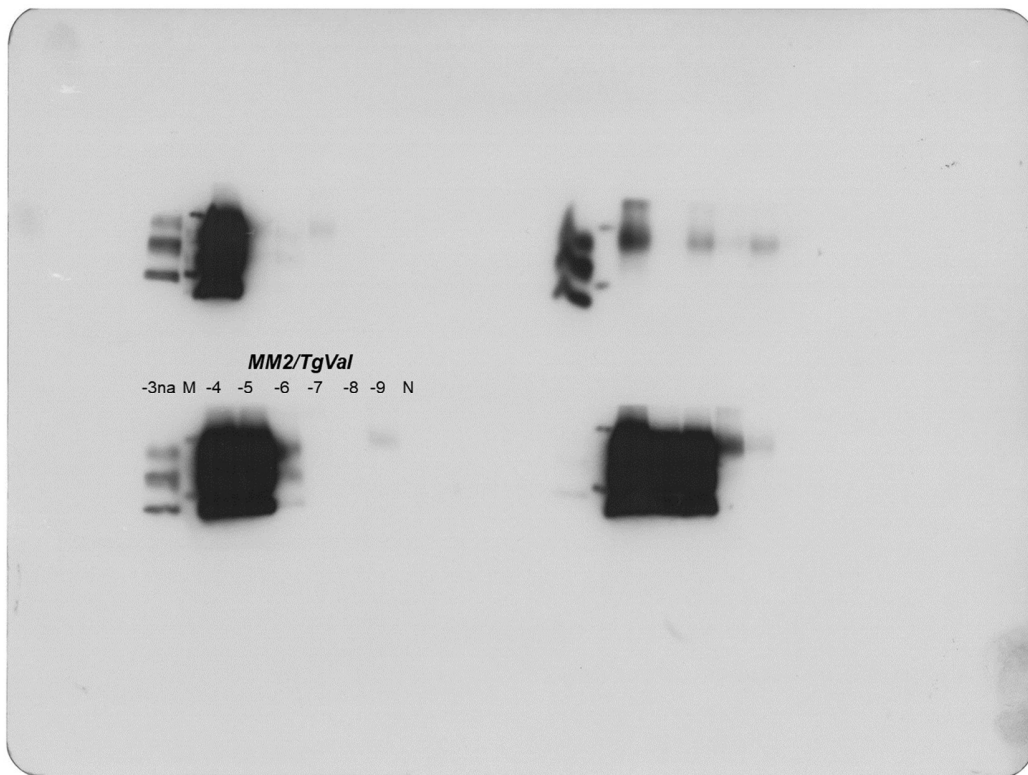
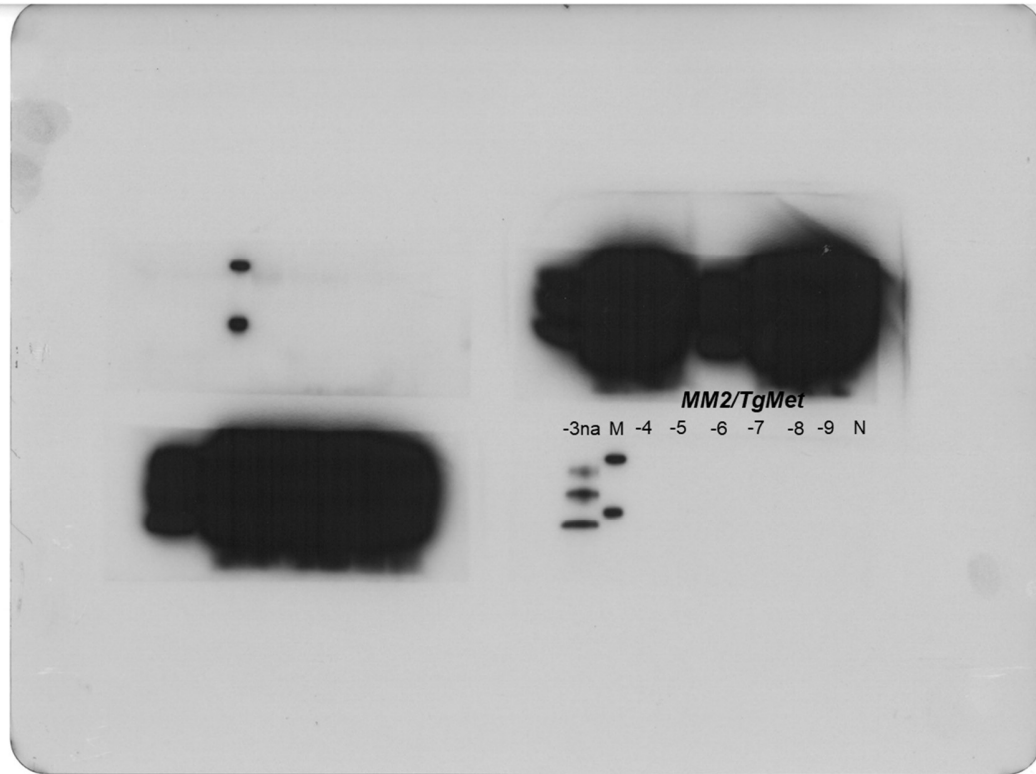
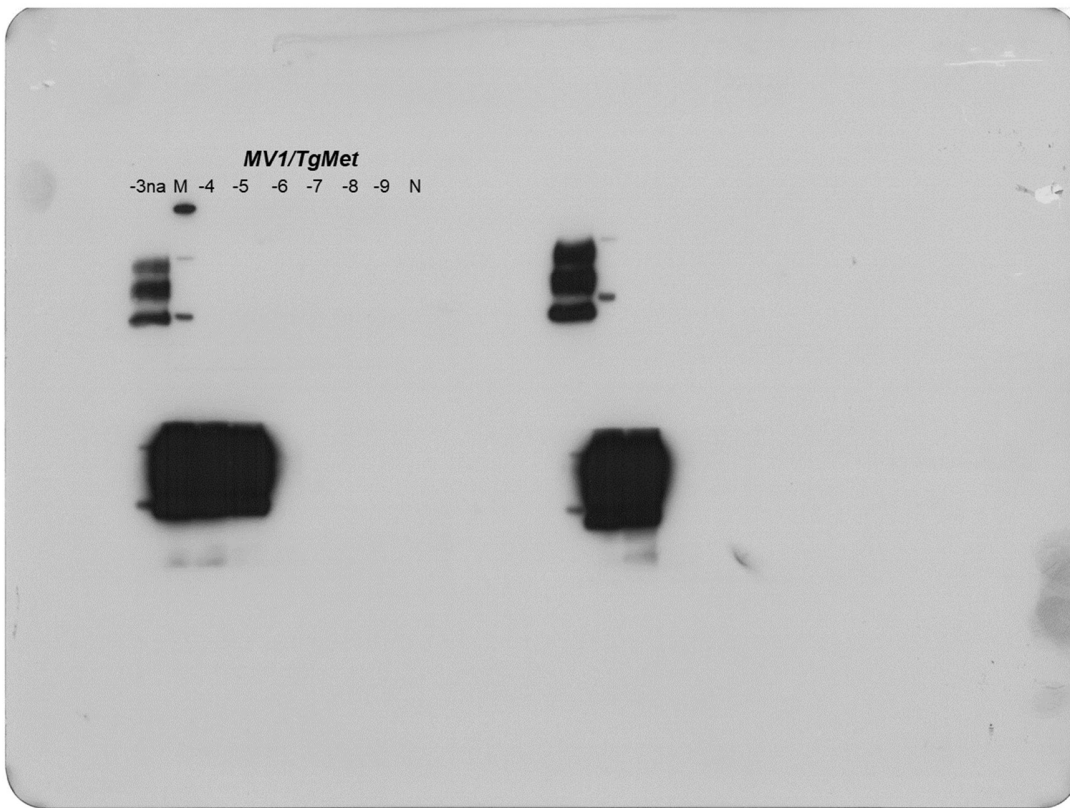
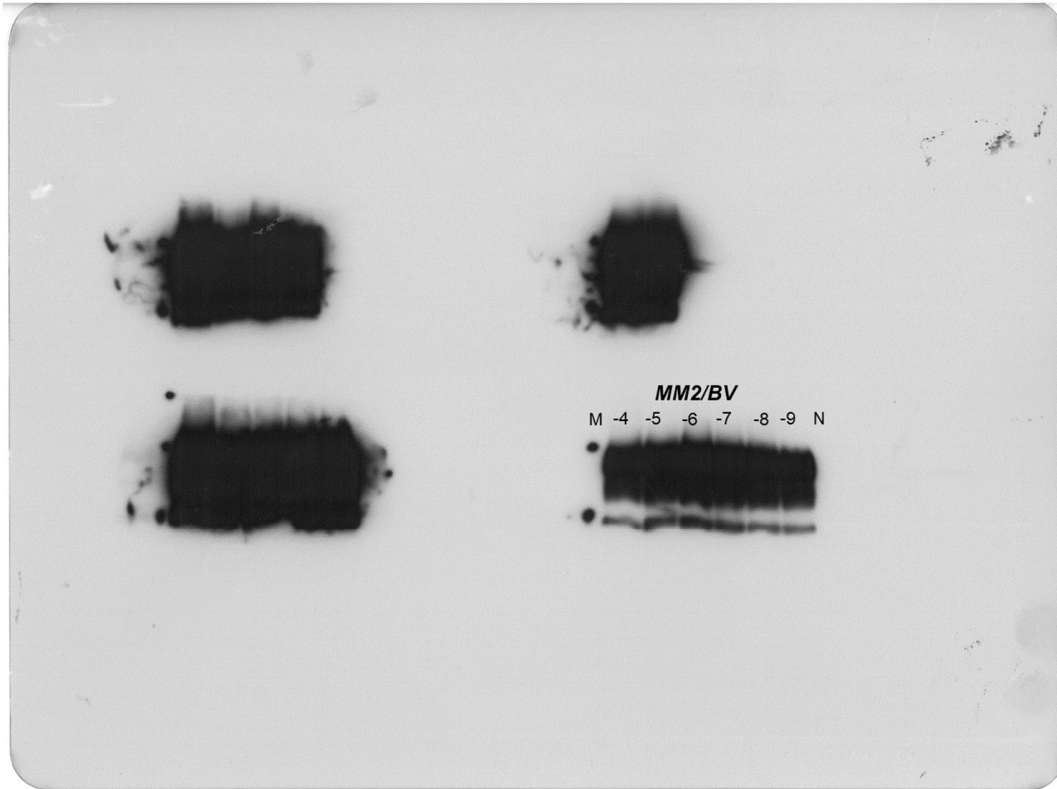


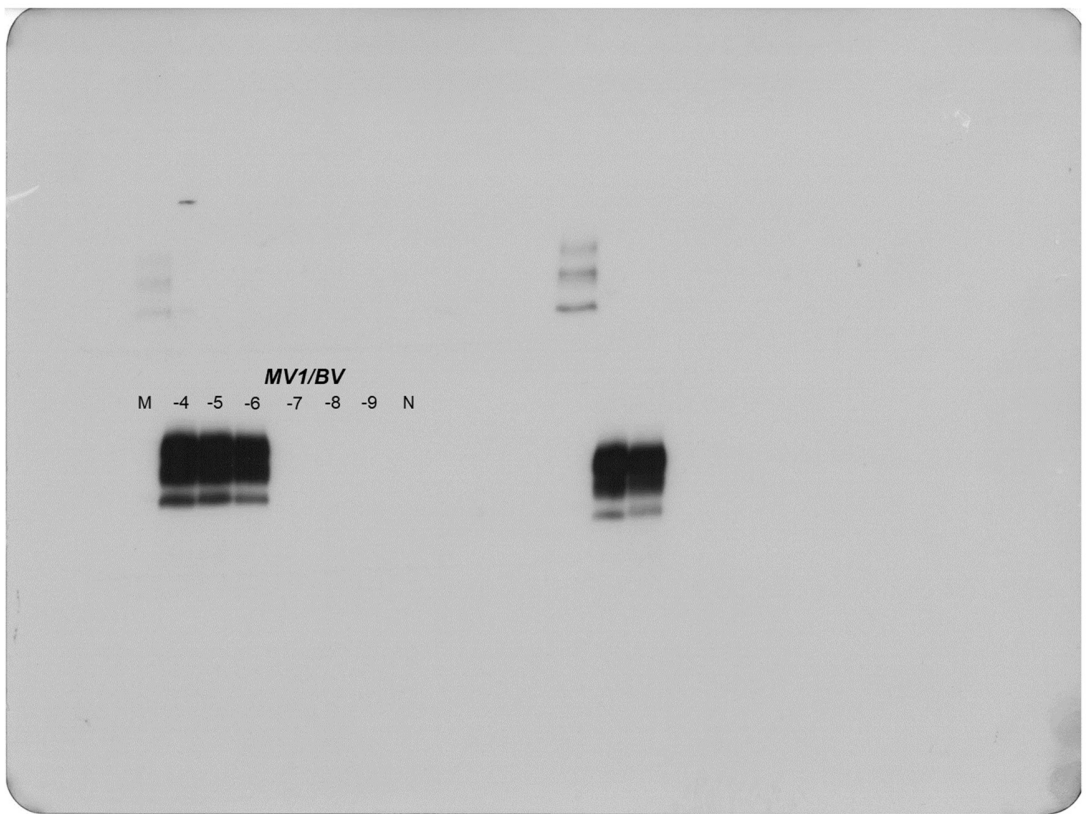
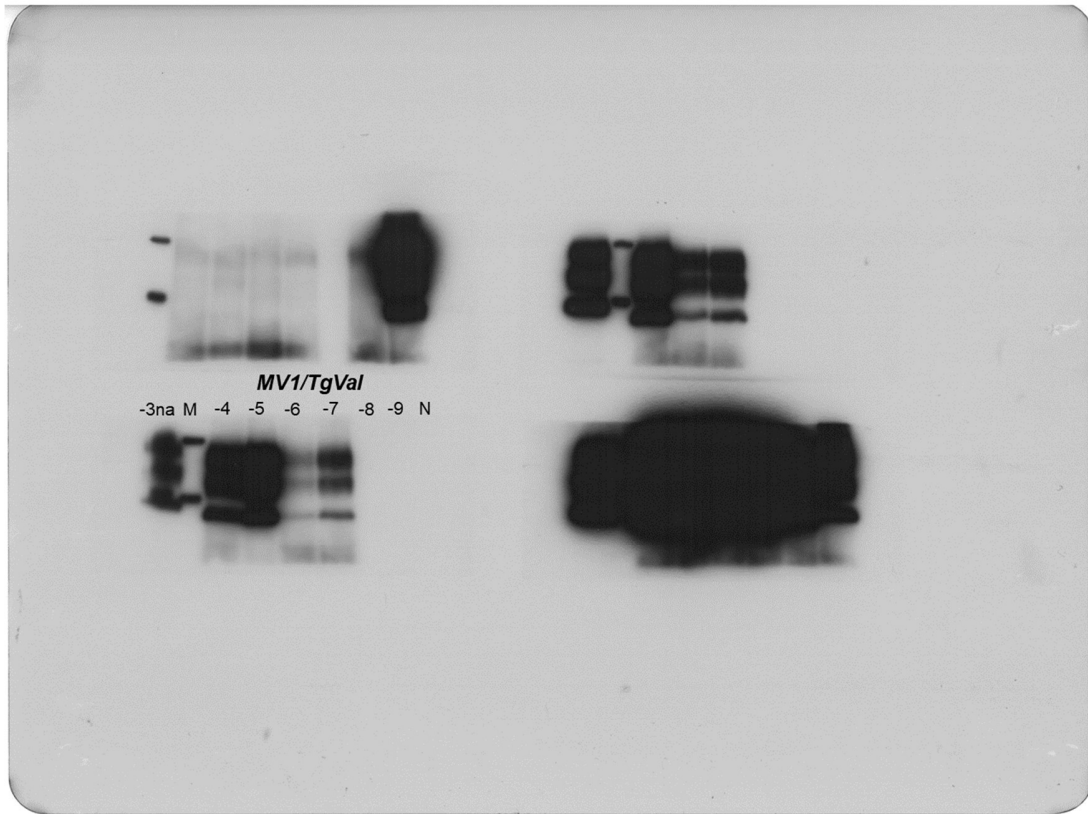
Figure 2

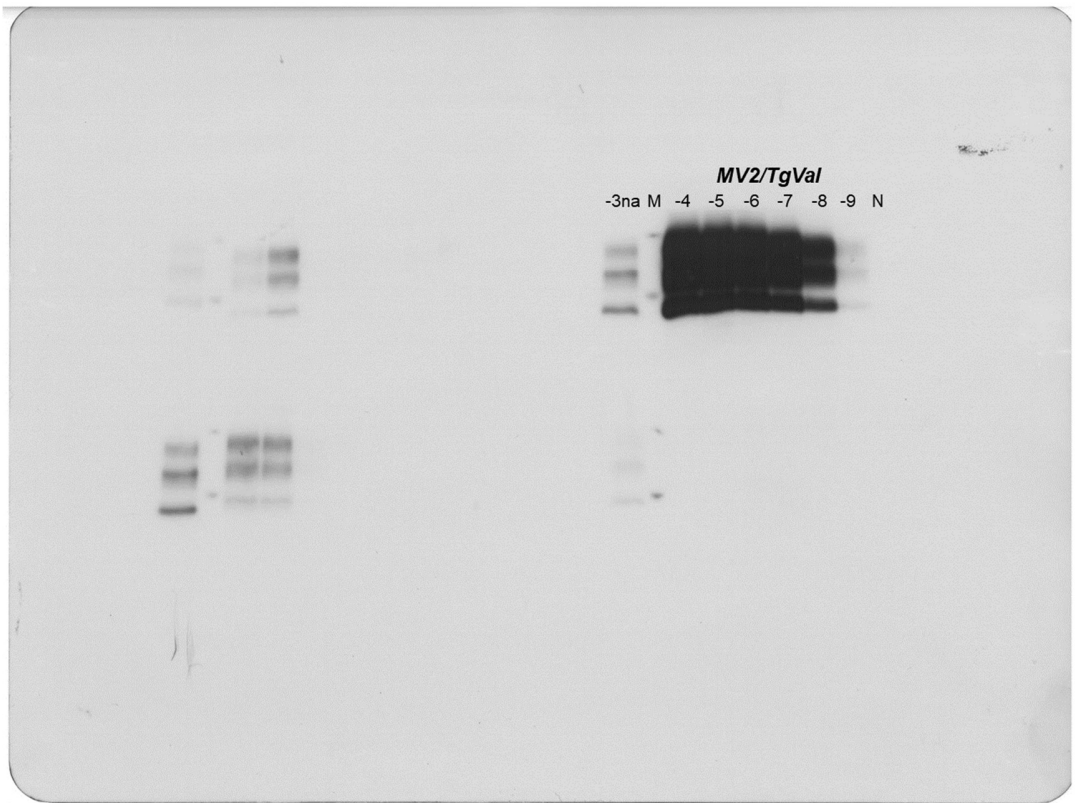
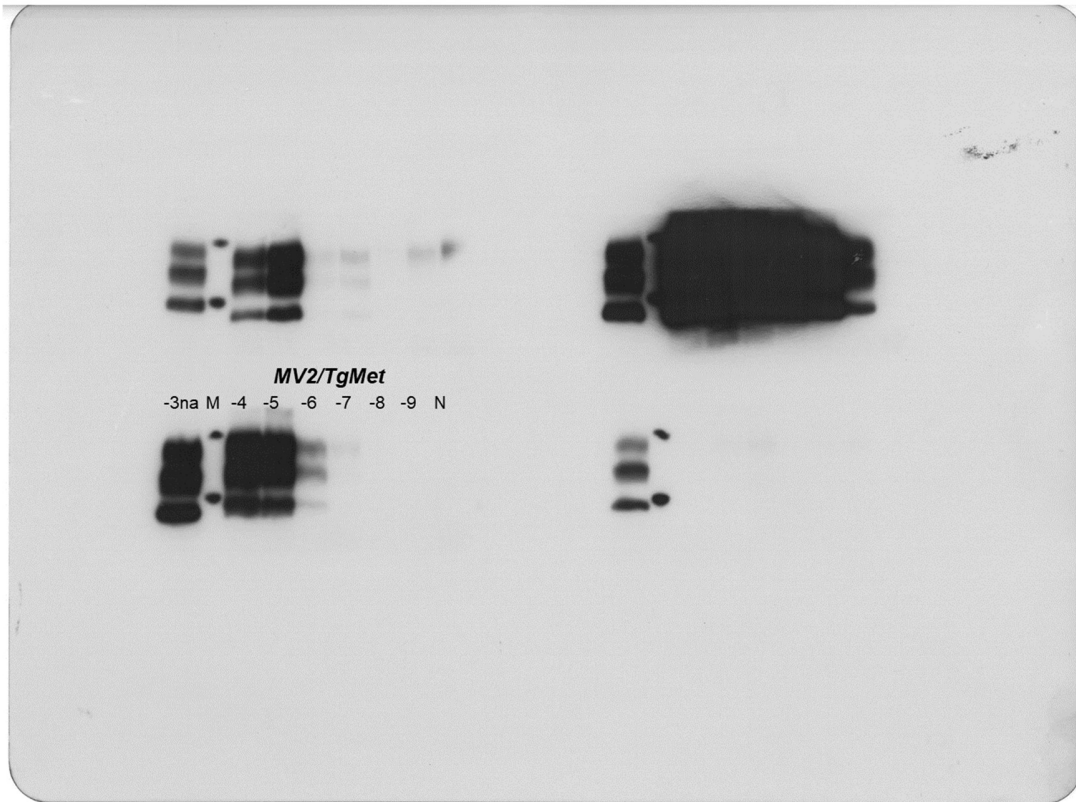


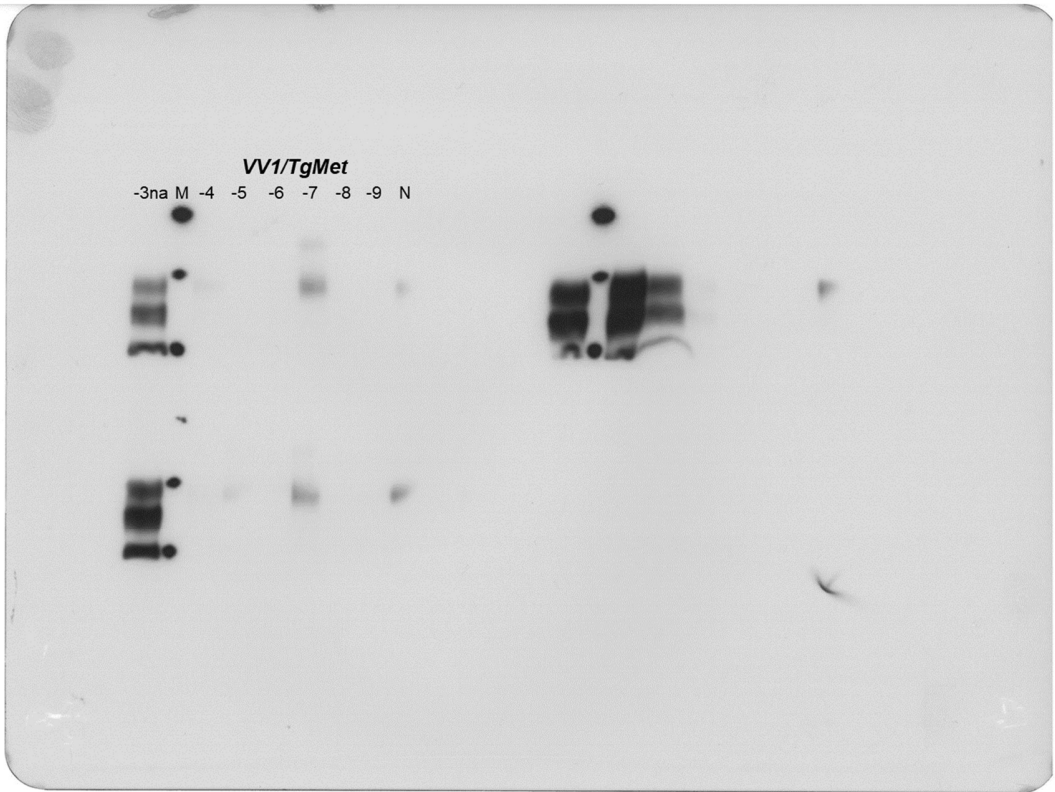
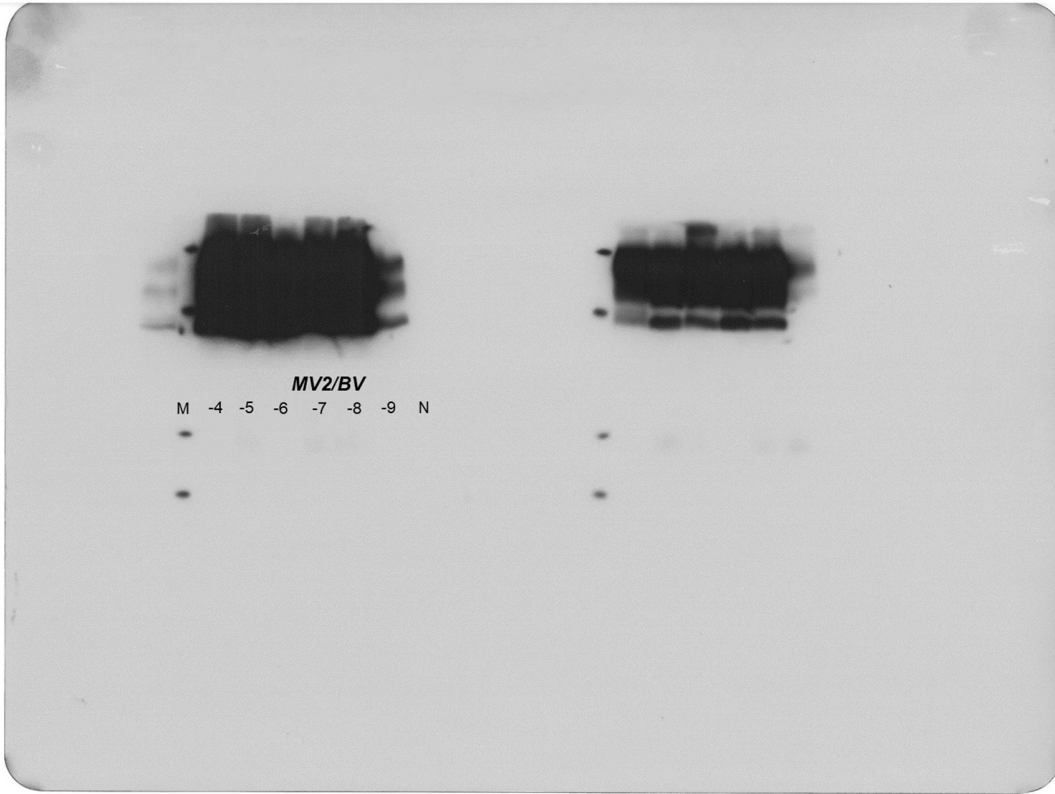


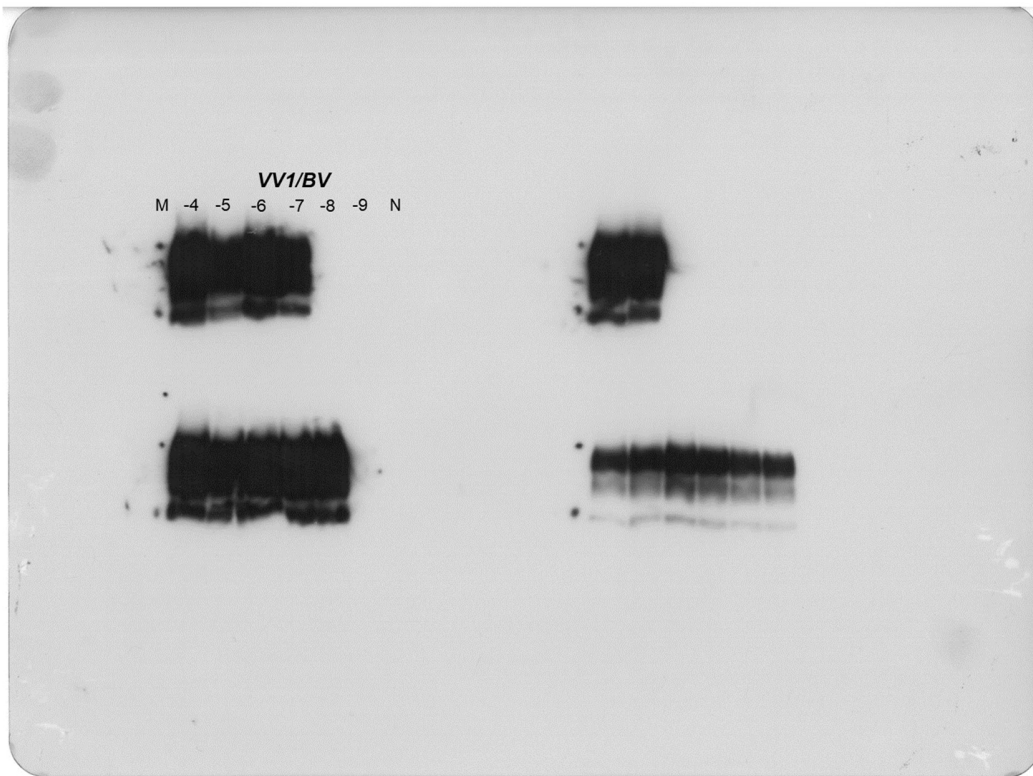
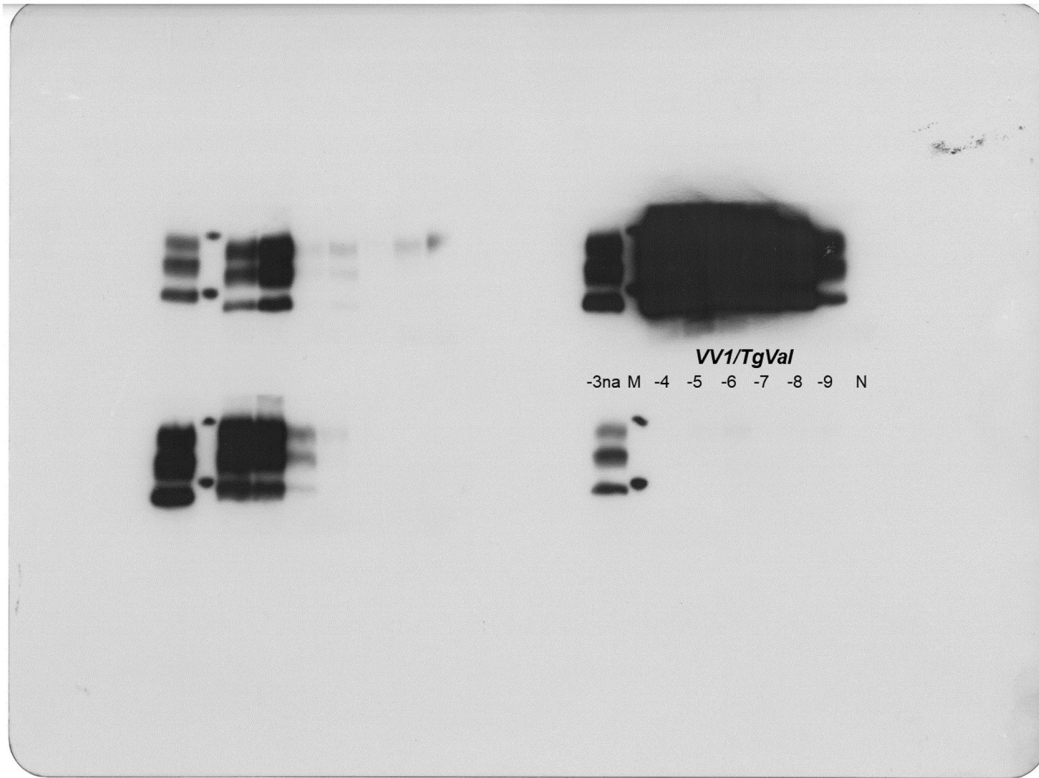


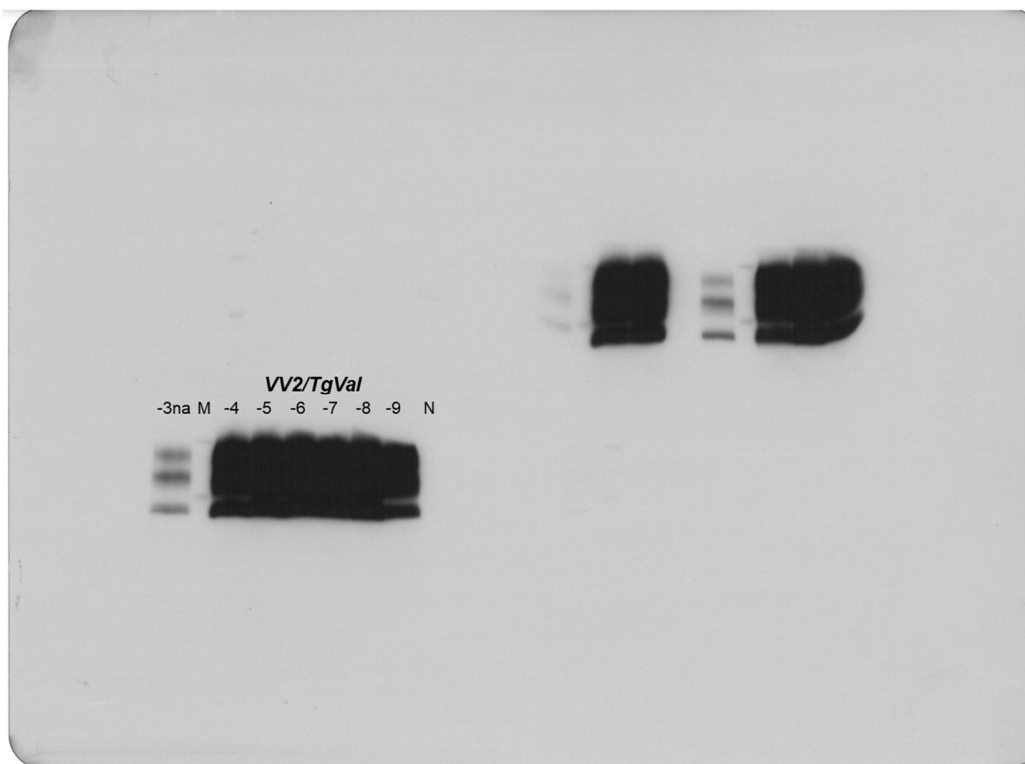
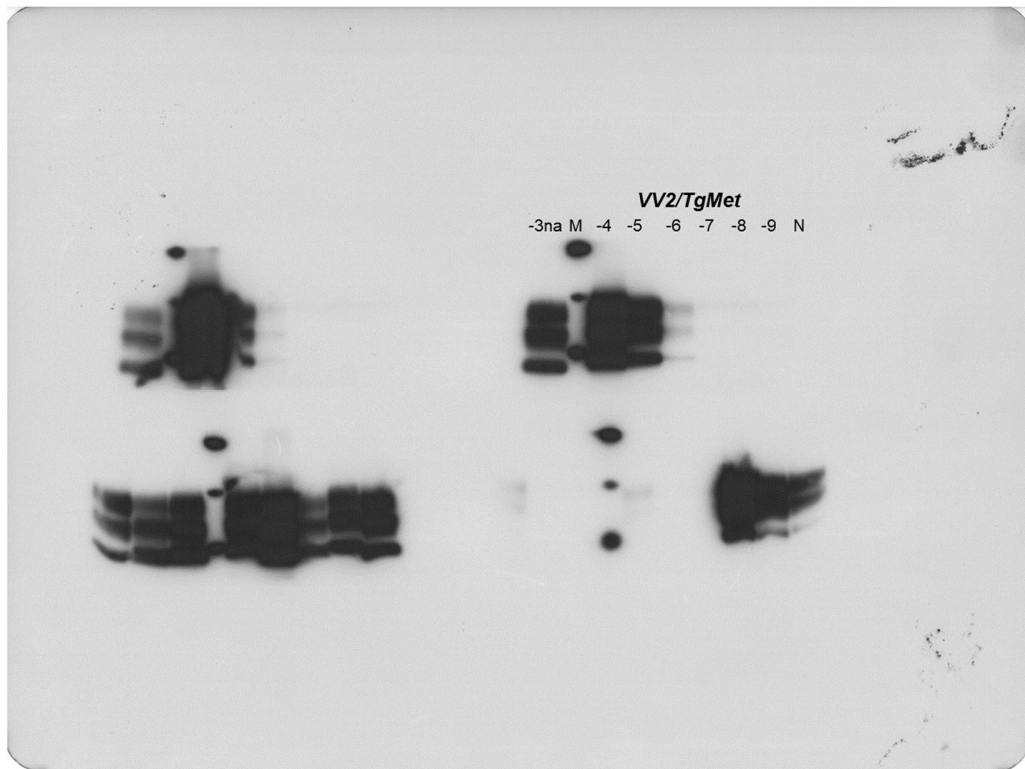


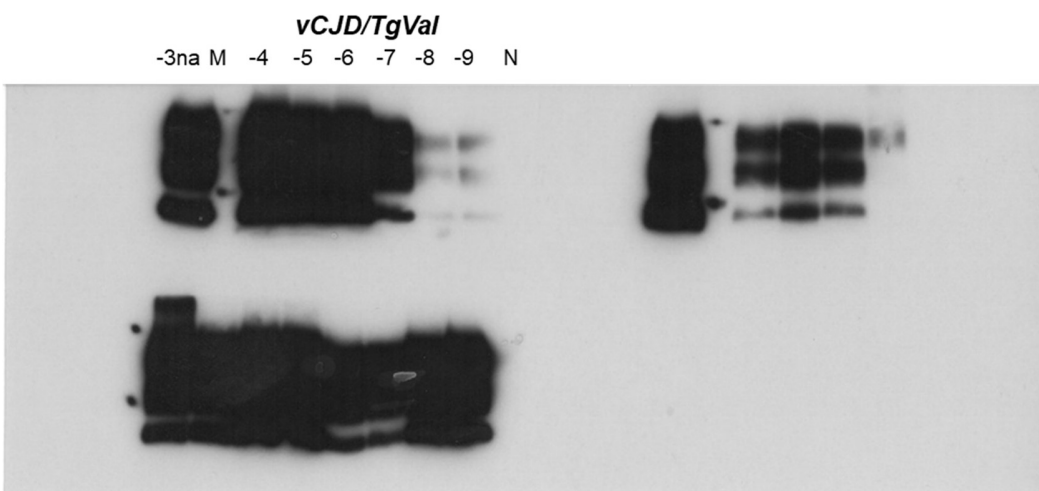
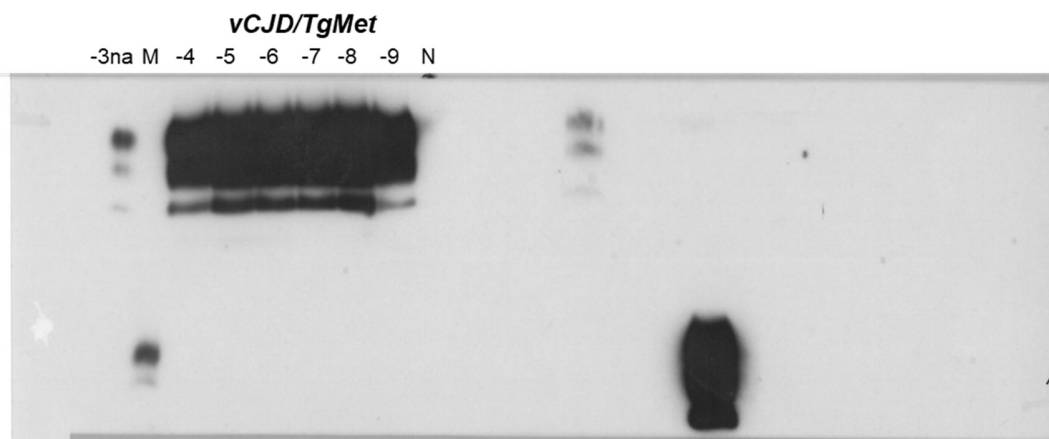
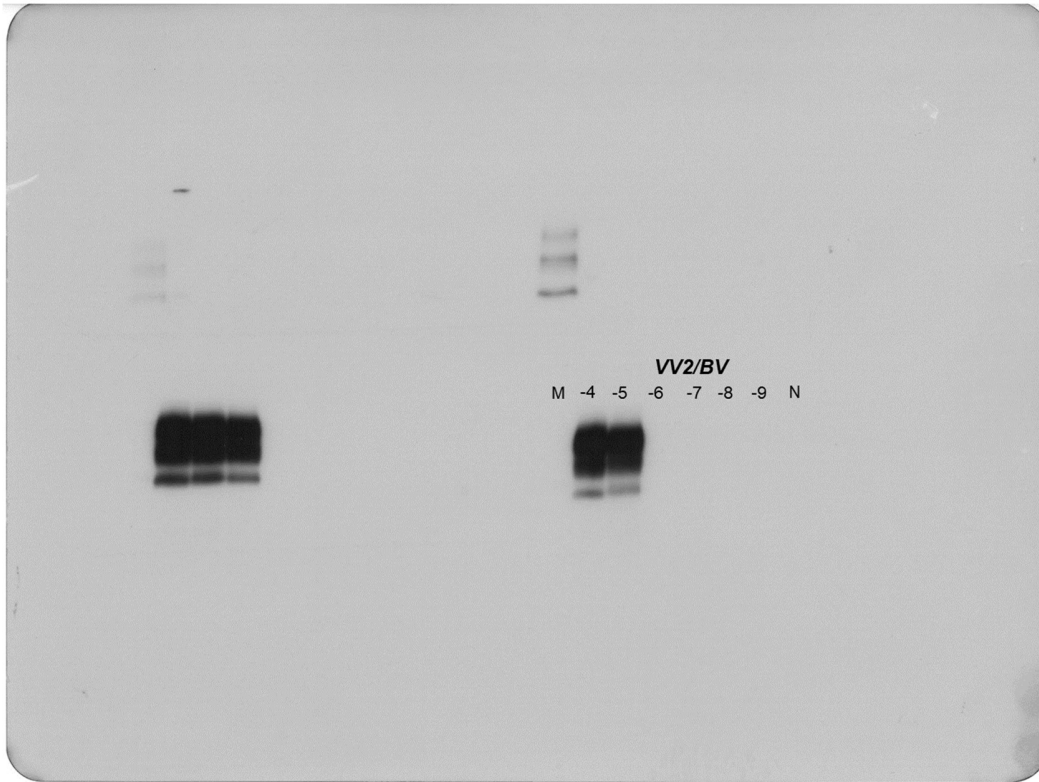












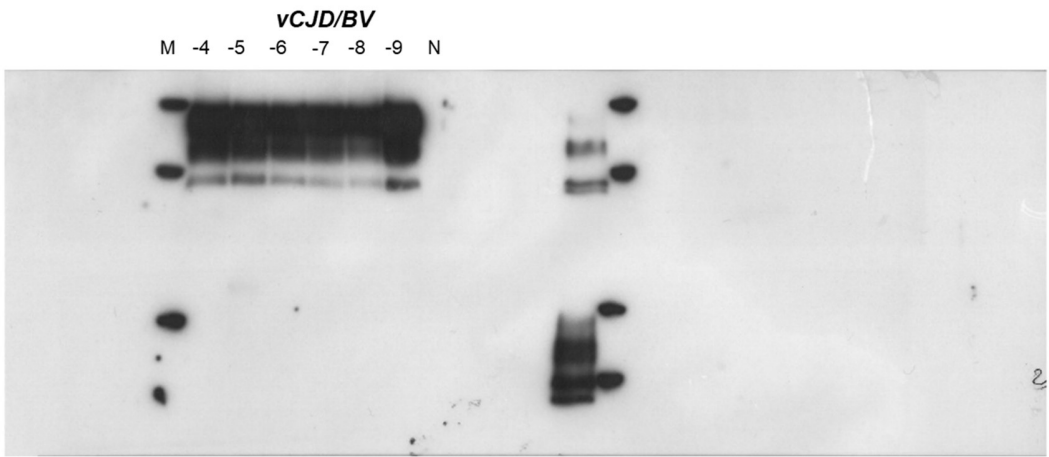
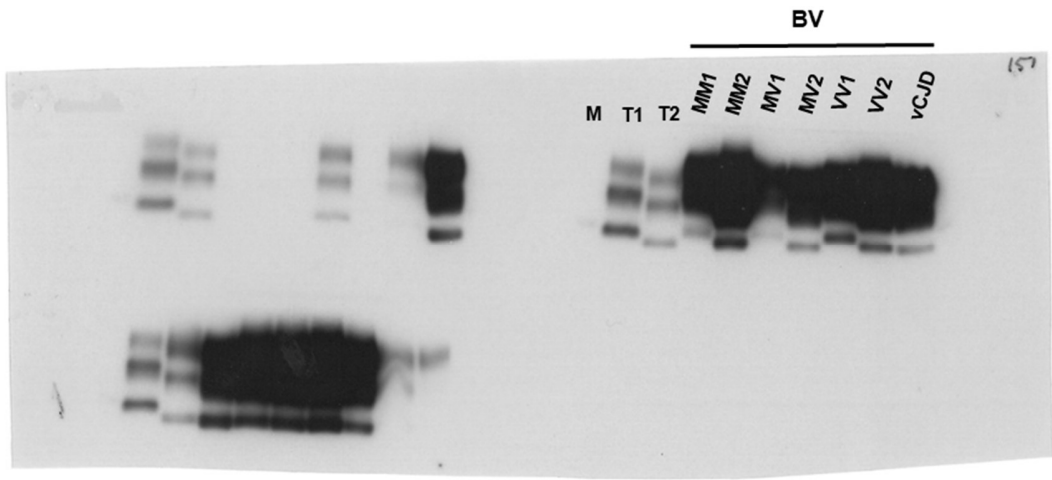
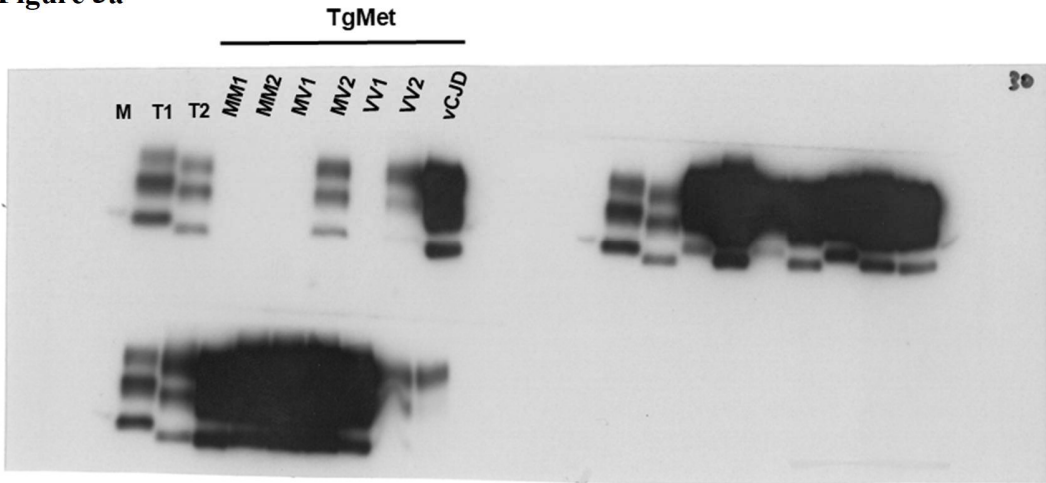


Figure 3a



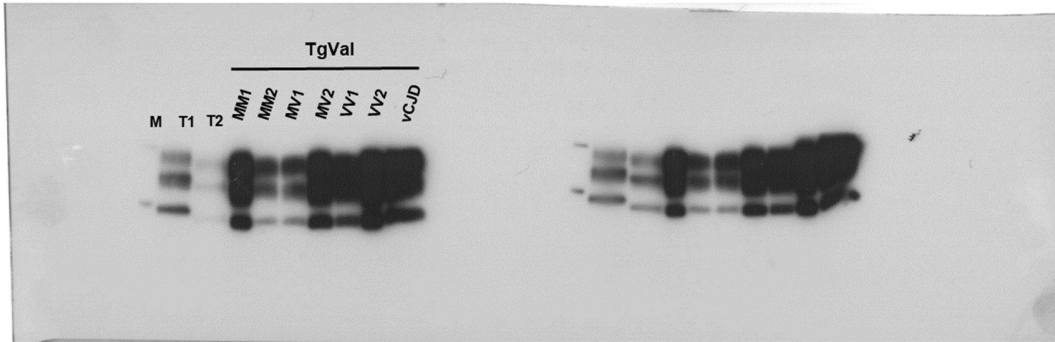
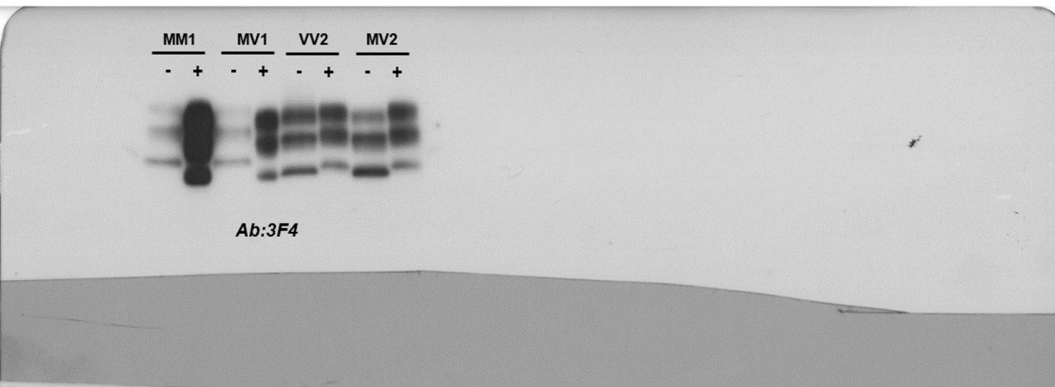
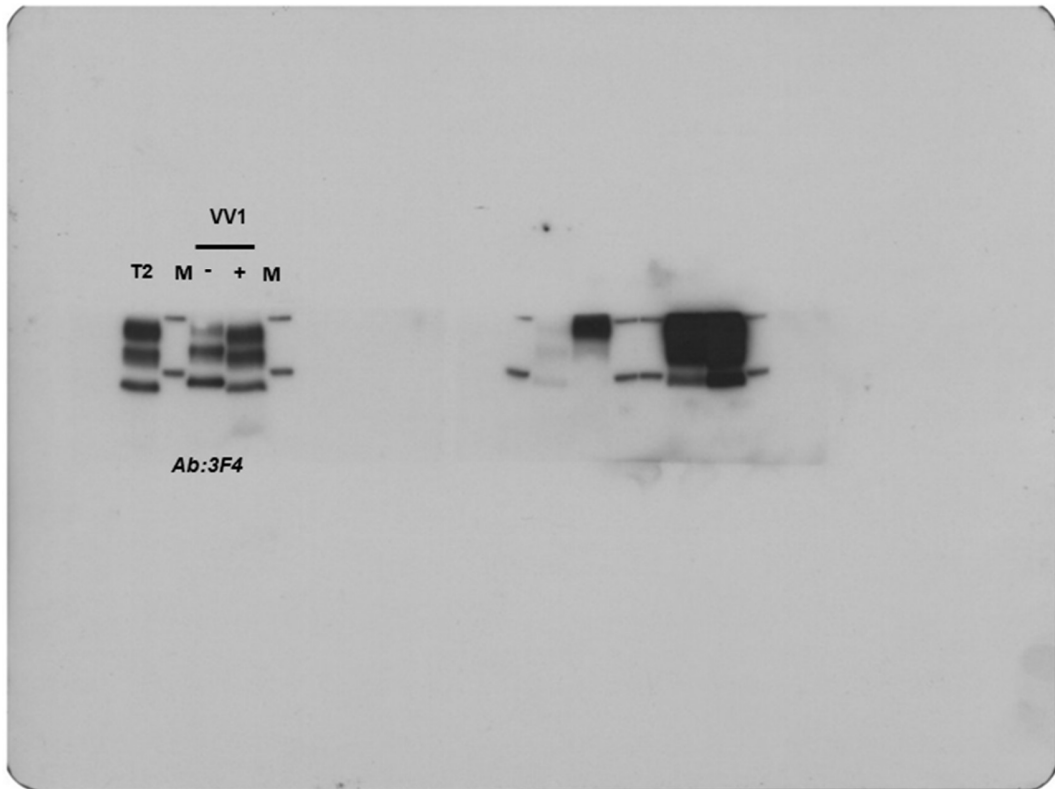


Figure 3b



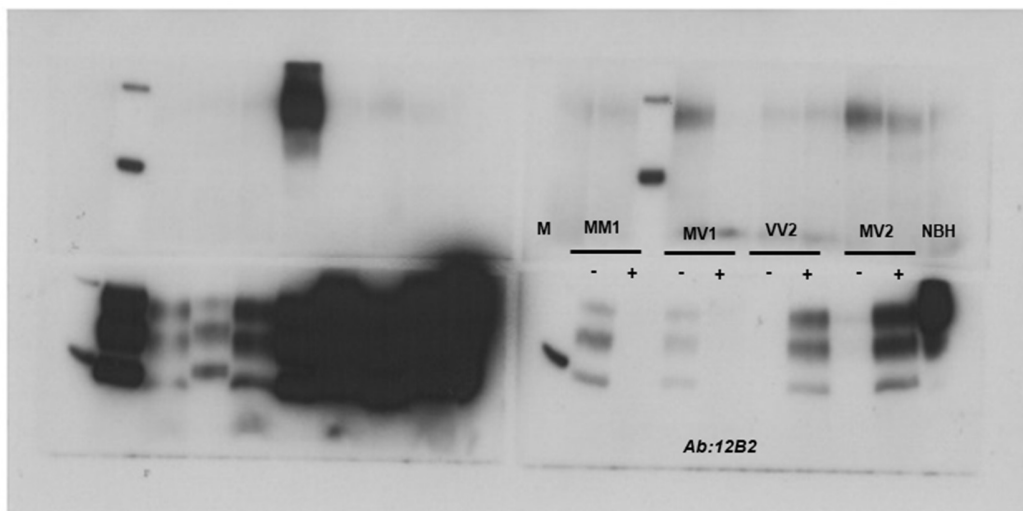
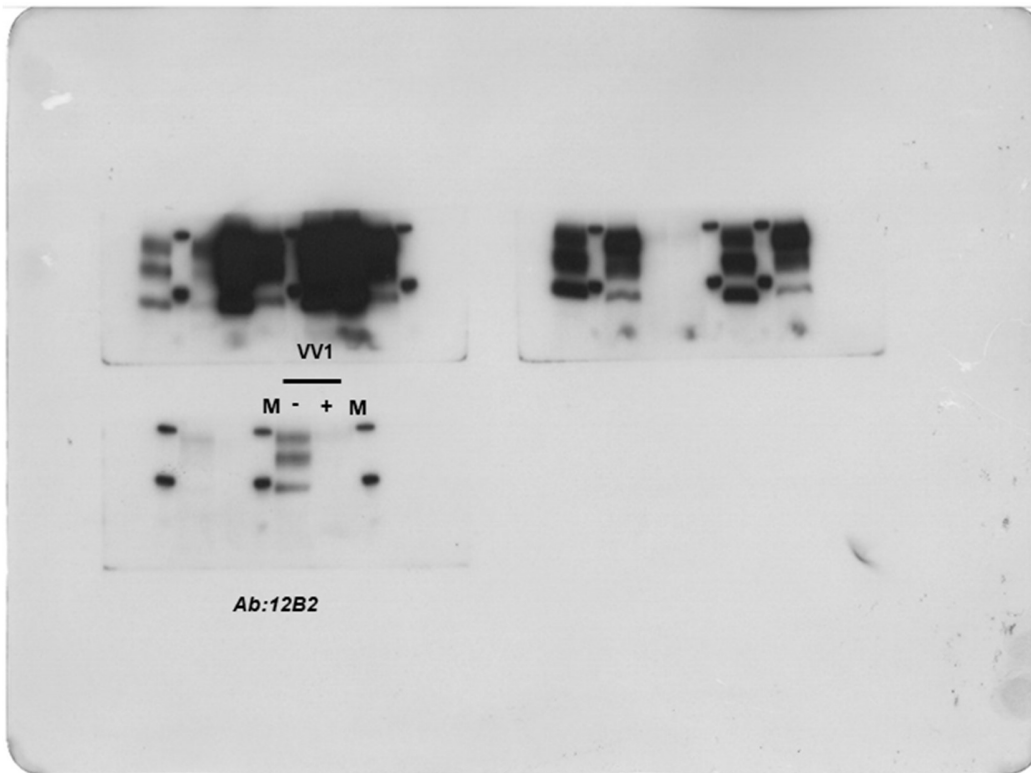
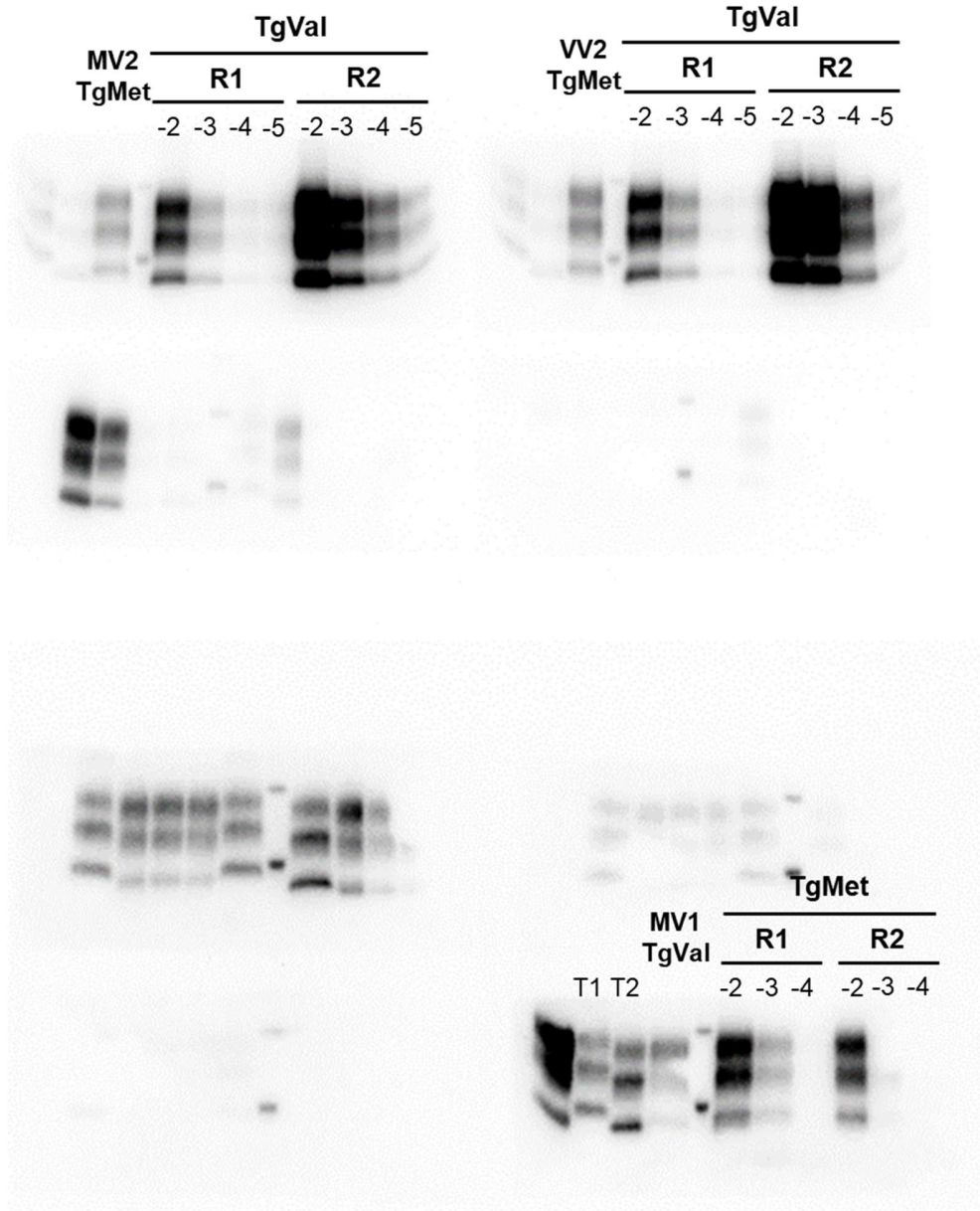


Figure 3c (digital imaging system)



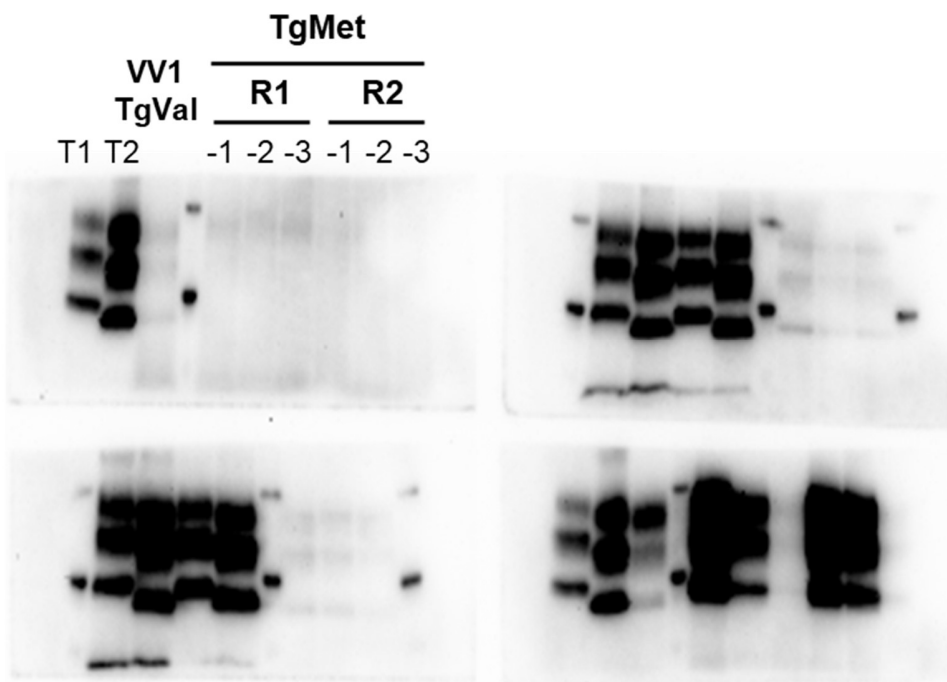
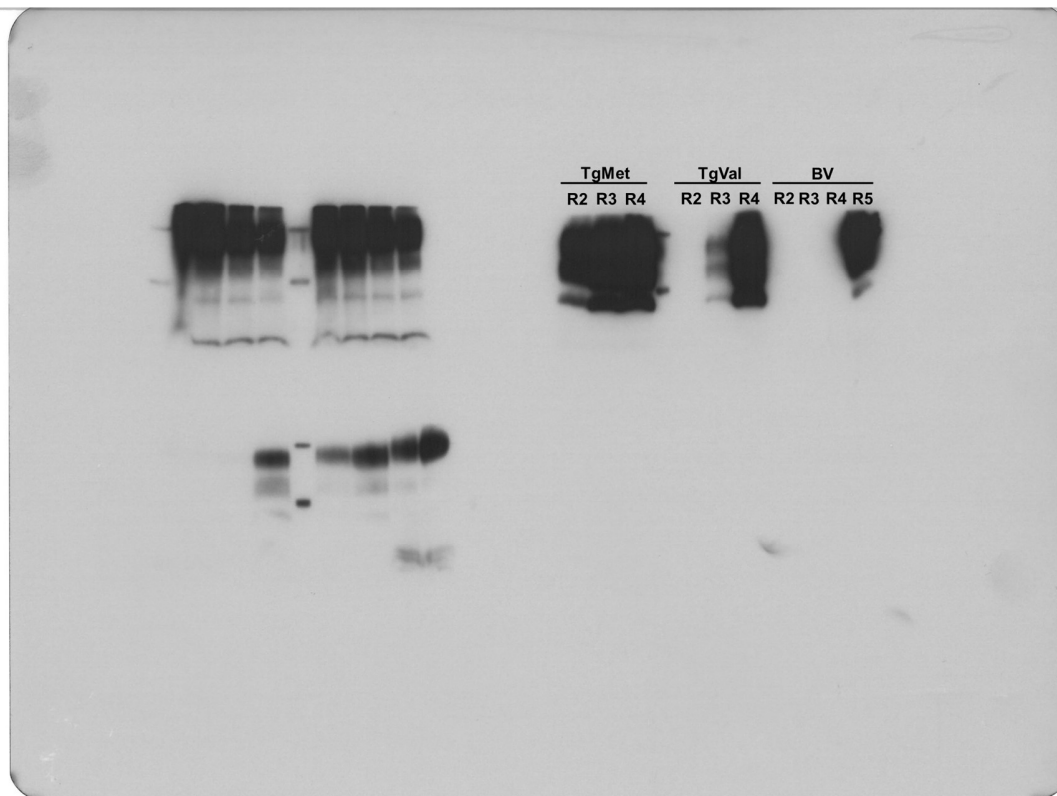


Figure 4



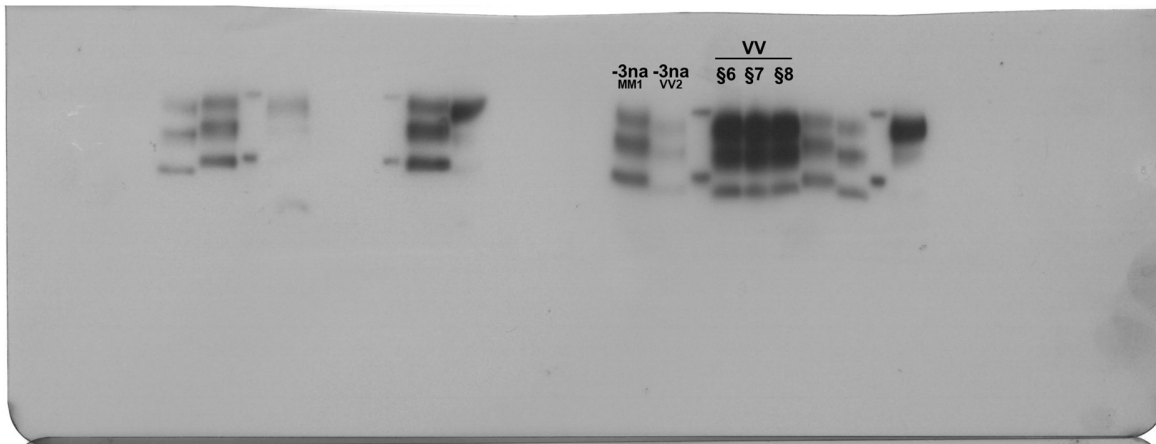
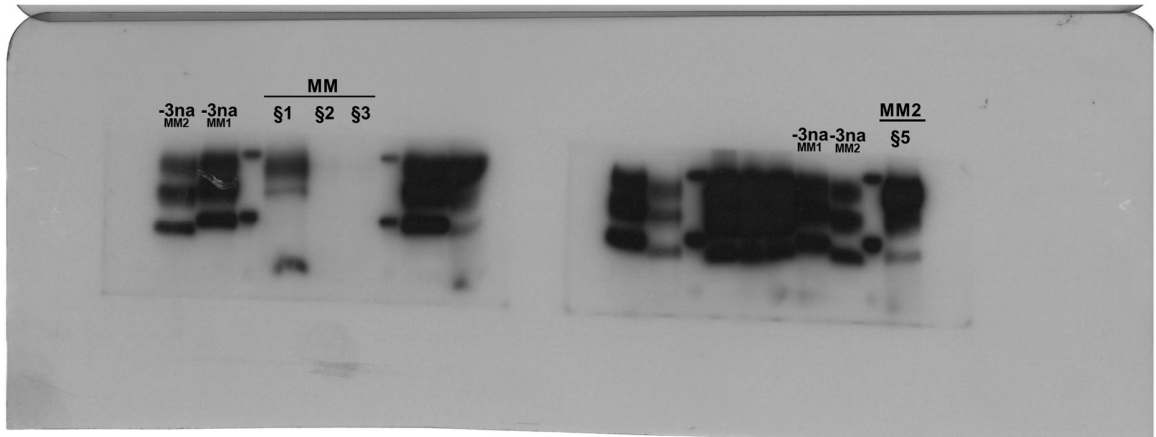


Figure S1

