

Supplementary Information

The role of ear stone size in hair cell acoustic sensory transduction

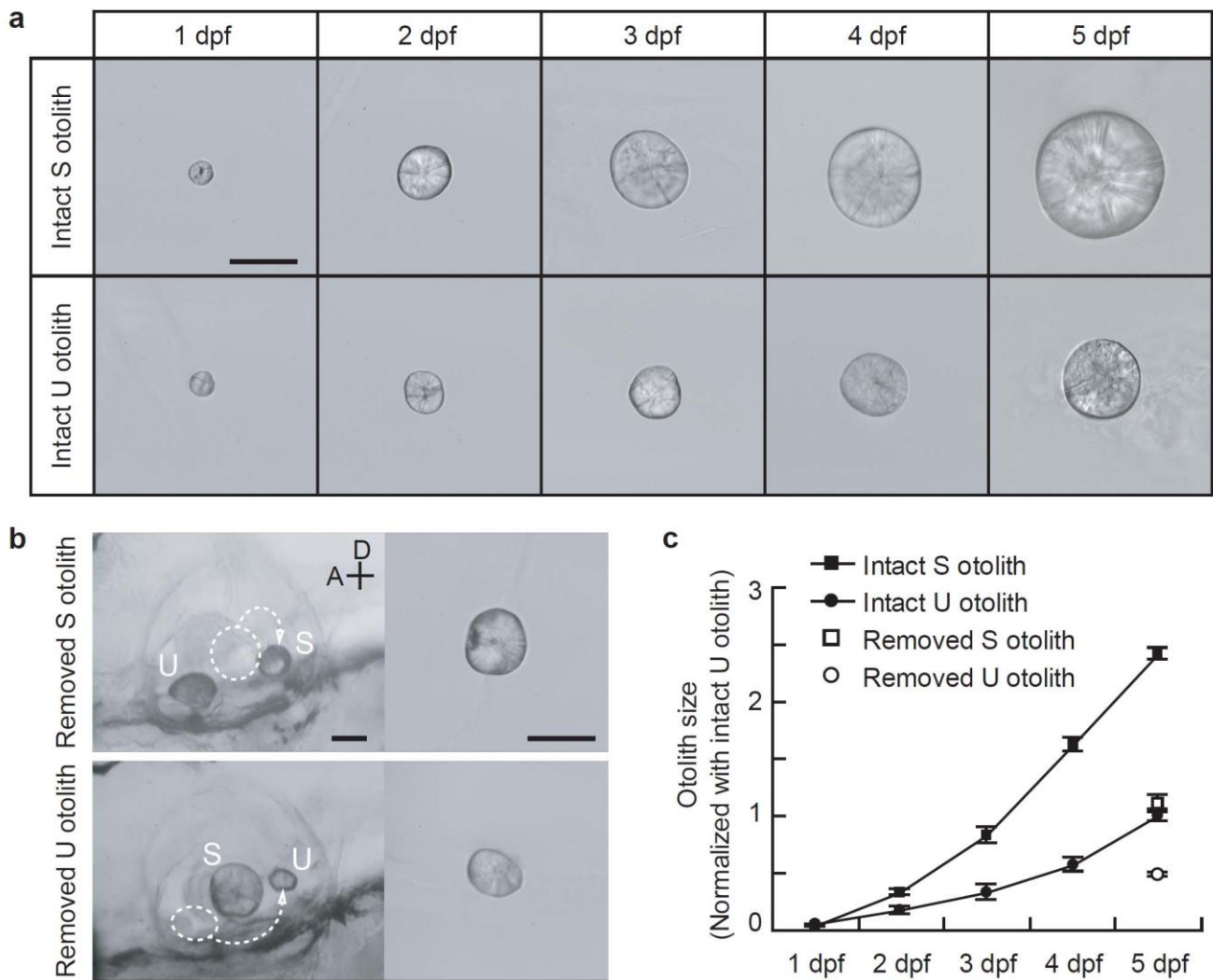
Maya Inoue^{1,2}, Masashi Tanimoto^{1*}, & Yoichi Oda^{1*}

¹Division of Biological Science, Graduate School of Science, Nagoya University, Japan

²Research Fellow DC of the Japan Society for the Promotion of Science, Japan

*Correspondence should be addressed to either M. Tanimoto or Y. Oda. Email:

m-tanimoto@bio.nagoya-u.ac.jp or oda@bio.nagoya-u.ac.jp



Supplementary Figure S1. Difference in the otolith growth between saccule (S) and utricle (U) and effect of the otolith removal from its macula. (a) U and S otoliths isolated from intact larvae at 1 to 5 dpf. **(b)** Manipulated otoliths in S otolith-removed (upper panels) or U otolith-removed fish (lower panels) at 5 dpf. Left panels show lateral views of the otic vesicle (OV), and right panels show isolated otoliths. Otoliths removed from the maculae do not grow as large as normal otoliths do. **(c)** Relative otolith volume normalized according to the volume of intact U otolith at 5 dpf (average of five otoliths). Scale bars represent 50 μm . Abbreviations in **(b)** indicate anterior (A) and dorsal (D). Error bars denote standard error of the mean (s.e.m.).