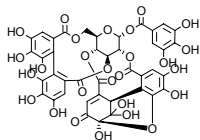
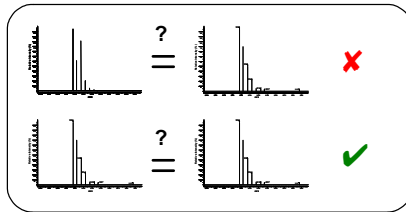


Formula
Generator

No.	Formula	Mass
861	C61H22N4OP2S2	952.071
862	C61H22N4O3P2S	952.089
863	C61H23N4OP3S	952.081
864	C61H23N4O3P3	952.088
865	C61H24N4OP4	952.09
866	C61H29O4PS3	952.097
867	C61H30O2P2S3	952.088
868	C61H31P3S3	952.08
869	C61H31O2P3S2	952.098
870	C61H32P4S2	952.09
871	C61H119N6O	951.945
872	C61H123O4S	951.914
873	C61H123O6	951.932
874	C61H124O2PS	951.906
875	C61H124O4P	951.924
876	C61H125O2P2	951.915
877	C61H128P3	951.907
878	C61H127N2S2	951.944
879	C61H127N2O2S	951.962



{possible result}

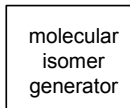


{exhaustive
drill down}

Automatic
Isotopic
Pattern
Filter



{fast approach but
non comprehensive}



{slow approach,
needs constraints,
comprehensive}

No.	Formula	Mass
1	C41H28O27	952.082
2	C41H28N8O20	952.142
3	C41H28N16O13	952.202
4	C41H28N24O6	952.262