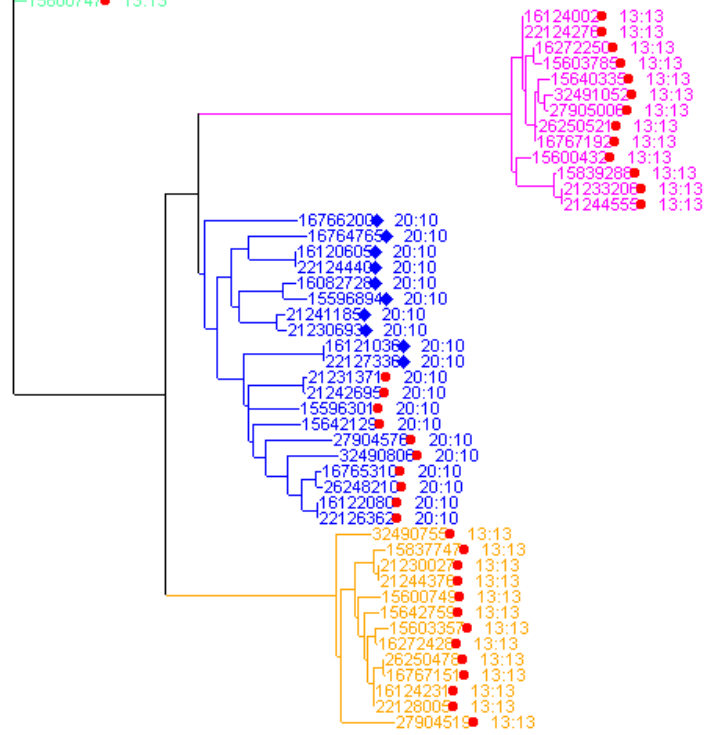


15837745 13:13
 21230027 13:13
 21244376 13:13
 27904521 13:13
 32490755 13:13
 15642757 13:13
 26250476 13:13
 16767149 13:13
 16124229 13:13
 22128005 13:13
 15603355 13:13
 16272426 13:13
 15600749 13:13

■ fam
 ■ inpar
 ■ outpar



Xylella fastidiosa 9a5c
Xanthomonas campestris pv. *campestris* str. ATCC 33913
Xanthomonas axonopodis pv. *citri* str. 306
Buchnera aphidicola str. Bp (Baizongia pistaciae)
Wigglesworthia glossinidia endosymbiont of *Glossina brevipalpis*
Vibrio cholerae O1 biovar *eltor* str. N16961
Escherichia coli CFT073
Salmonella typhimurium LT2
Yersinia pestis CO92
Yersinia pestis KIM
Pasteurella multocida subsp. *multocida* str. Pm70
Haemophilus influenzae Rd KW20
Pseudomonas aeruginosa PAO1
Yersinia pestis CO92
Yersinia pestis KIM
Haemophilus influenzae Rd KW20
Pasteurella multocida subsp. *multocida* str. Pm70
Vibrio cholerae O1 biovar *eltor* str. N16961
Wigglesworthia glossinidia endosymbiont of *Glossina brevipalpis*
Buchnera aphidicola str. Bp (Baizongia pistaciae)
Escherichia coli CFT073
Salmonella typhimurium LT2
Pseudomonas aeruginosa PAO1
Xylella fastidiosa 9a5c
Xanthomonas campestris pv. *campestris* str. ATCC 33913
Xanthomonas axonopodis pv. *citri* str. 306
Salmonella typhimurium LT2
Salmonella typhimurium LT2
Yersinia pestis CO92
Yersinia pestis KIM
Yersinia pestis CO92
Pseudomonas aeruginosa PAO1
Xanthomonas axonopodis pv. *citri* str. 306
Xanthomonas campestris pv. *campestris* str. ATCC 33913
Yersinia pestis CO92
Yersinia pestis KIM
Xanthomonas campestris pv. *campestris* str. ATCC 33913
Xanthomonas axonopodis pv. *citri* str. 306
Pseudomonas aeruginosa PAO1
Vibrio cholerae O1 biovar *eltor* str. N16961
Buchnera aphidicola str. Bp (Baizongia pistaciae)
Wigglesworthia glossinidia endosymbiont of *Glossina brevipalpis*
Salmonella typhimurium LT2
Escherichia coli CFT073
Yersinia pestis CO92
Yersinia pestis KIM
Wigglesworthia glossinidia endosymbiont of *Glossina brevipalpis*
Xylella fastidiosa 9a5c
Xanthomonas campestris pv. *campestris* str. ATCC 33913
Xanthomonas axonopodis pv. *citri* str. 306
Pseudomonas aeruginosa PAO1
Vibrio cholerae O1 biovar *eltor* str. N16961
Pasteurella multocida subsp. *multocida* str. Pm70
Haemophilus influenzae Rd KW20
Escherichia coli CFT073
Salmonella typhimurium LT2
Yersinia pestis CO92
Yersinia pestis KIM
Buchnera aphidicola str. Bp (Baizongia pistaciae)

ATP synthase, beta chain
 ATP synthase beta chain
 ATP synthase beta chain
 ATP synthase beta chain
 hypothetical protein WGLp008
 ATP synthase F1, beta subunit
 ATP synthase beta chain
 F1-F0-type proton-ATPase subunit beta
 ATP synthase beta subunit protein
 membrane-bound ATP synthase, F1 sector, beta-subunit
 AtpD
 ATP synthase F1 subunit beta
 ATP synthase beta chain
 transcription termination factor
 transcription termination factor Rho; polarity suppressor
 transcription termination factor
 Rho
 transcription termination factor Rho
 hypothetical protein WGLp303
 transcription termination factor rho
 transcription termination factor Rho
 transcription termination factor Rho
 transcription termination factor Rho
 transcription termination factor Rho
 transcription termination factor Rho
 transcription termination factor Rho
 transcription termination factor Rho
 needle complex secretion ATPase
 needle complex: ATPase
 putative type III secretion system ATP synthase
 flagellum-specific ATP synthase
 needle complex secretion ATPase
 ATP synthase in type III secretion system
 HrcN protein
 HrpB6 protein
 putative flagellum-specific ATP synthase
 flagellum-specific ATP synthase
 flagellar protein
 flagellar protein
 flagellum-specific ATP synthase FliI
 flagellum-specific ATP synthase FliI
 flagellum-specific ATP synthase
 hypothetical protein WGLp057
 flagellum-specific ATP synthase
 Flagellum-specific ATP synthase
 flagellum-specific ATP synthase
 flagellum-specific ATP synthase
 hypothetical protein WGLp006
 ATP synthase, alpha chain
 ATP synthase alpha chain
 ATP synthase alpha chain
 ATP synthase alpha chain
 ATP synthase F1, alpha subunit
 AtpA
 ATP synthase F1 subunit alpha
 ATP synthase alpha chain
 F1-F0-type proton-ATPase subunit alpha
 ATP synthase alpha subunit protein
 membrane-bound ATP synthase, F1 sector, alpha-subunit
 ATP synthase subunit alpha