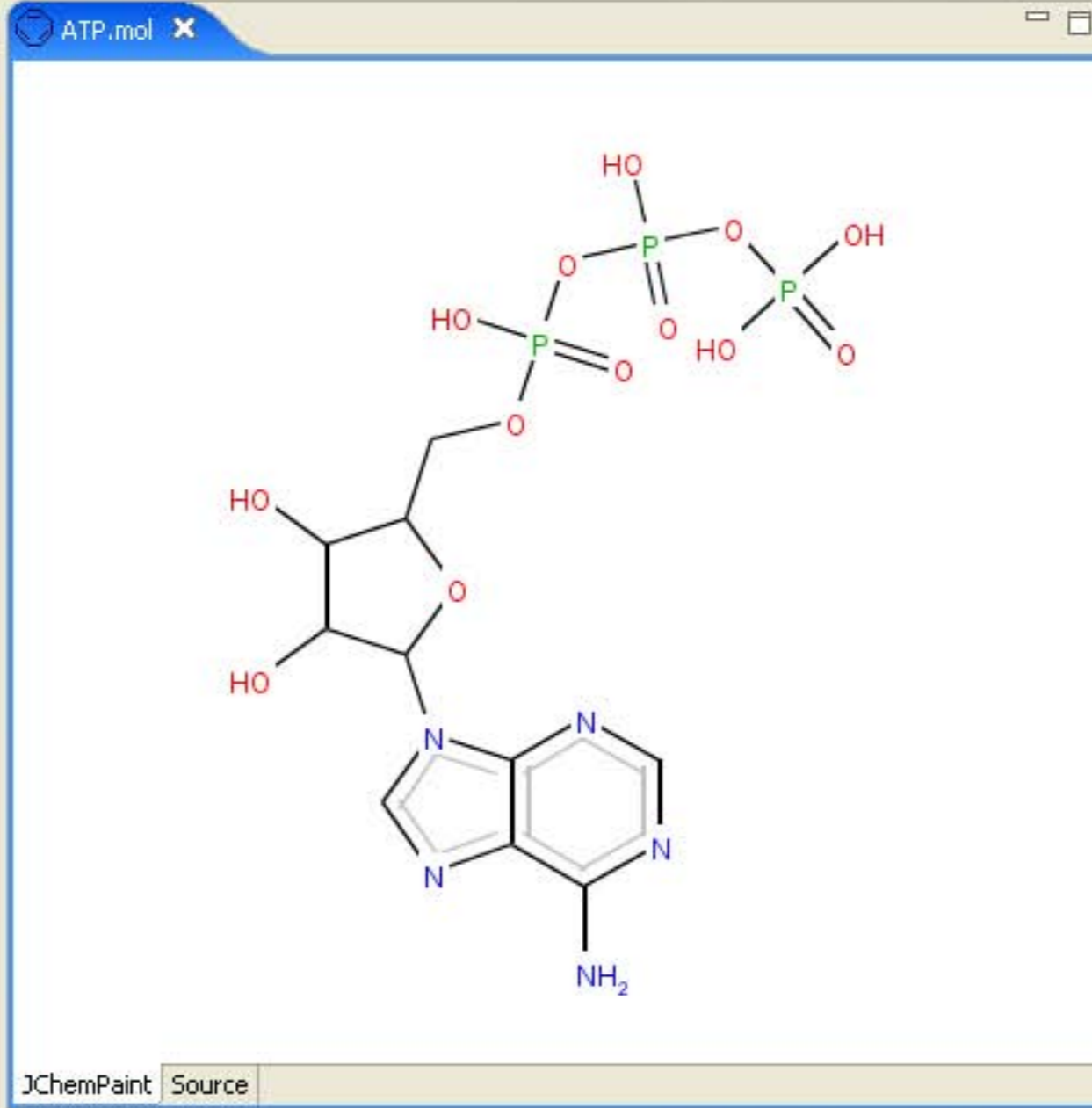


BioResource Navigator

- pdb
 - 1ale.pdb
 - 1D66.pdb
 - 2PRG.pdb
 - penicillin.pdb
 - viagra.pdb
 - zif268.pdb
- sequences
- spectra
 - aug07.dx
 - cpd01.jdx
 - eupatoriochromene.cm
 - Maaranolide_G.smr
 - Manaarenolide_H.smr
 - Manaarenolide_I.smr
 - spectrum1.xml
 - spectrum2.xml
 - spectrum2-local.xml
 - spectrum3.xml
 - spectrum4.xml
 - spectrumList1.xml
 - spectrumList2.xml
 - strychnine_jcamp-dx5.
- ATP.mol
- C00020.mol
- C05441.mol
- cmlspect.bib
- polycarpol.mol
- reserpine.mol
- showSecondaryProteinStru
- testedfeeds.opml
- thiamin.mol
- viagra.xyz



Console

```

Bioclipse console
Console initiated
Parsed file in 420 ms.
'ATP.mol' loaded and parsed successfully.
  
```

ChemTree

- ChemFile
 - ChemSequence
 - ChemModel
 - MoleculeSet
 - Molecule
 - Atom N
 - Atom C
 - Atom N
 - Atom C
 - Atom N
 - Atom C
 - Atom N
 - Atom C
 - Atom N
 - Atom C

Properties

Property	Value
CDK	
Atom count	31
Bond count	33
File format	MDL Molfile
Formula	C10N5O13P3
InChI	N/A
Mass	490.87045
Natural mass	491.05478
SMILES	Nc3ncnc1c3(ncn1C2OC(COP(O)(...
Strand count	
General	
Format	MDL Molfile
Name	ATP.mol
Parent	N/A
Path	E:\development\bc_data\data\s...
Persisted type	net.bioclipse.model.resources.Fil...
Size	2,90 kB
Type	CDK Resource