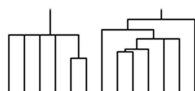
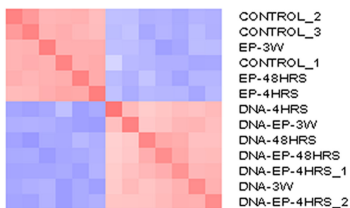


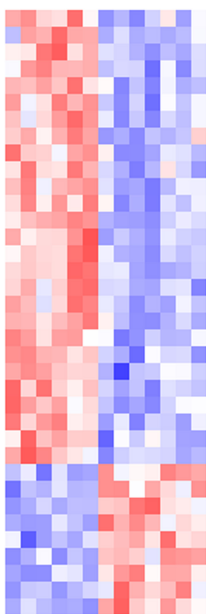
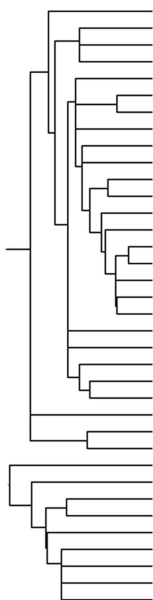
CONTROL_2
CONTROL_3
EP-3W
CONTROL_1
EP-48HRS
EP-4HRS
DNA-4HRS
DNA-EP-3W
DNA-48HRS
DNA-EP-48HRS
DNA-EP-4HRS_1
DNA-3W
DNA-EP-4HRS_2

EP
DNA
Time



EP-3W
EP-48HRS
EP-4HRS
CONTROL_1
CONTROL_2
CONTROL_3
DNA-EP-3W
DNA-EP-48HRS
DNA-EP-4HRS_1
DNA-48HRS
DNA-EP-4HRS_2
DNA-3W
DNA-4HRS

EP
DNA
Time



BM206565 RIKEN cDNA
NM026011 ADP-ribosyl.
NM011992 reticulocalbin 2
AI451985 MAPKK pt 3
AV380561 RIKEN cDNA
NM016682 sentrin, E1B
AA839814 Gm237
BM232436 tripartite pt 23
M32308 Zinc finger pt
BB041813 Serum resp pt
BG065679 pt phosphatase
AF483488 FK506 pt 1a
BG070008 RIKEN cDNA
BI905090 ceramide kinase
AA920031 Nuc transport
BC004810 polymerase II
BB044517 Hsp40 homolog
AV031454 Mitochond pt S2
AK014511 Ras-like, fam 12
BQ176608 v-Ki-ras2 homo
BB172310 RIKEN cDNA
AK013111 amino adipate ...
AV144956 Basic leucine zip
BB771960 Transmembr 33
AK009343 Ser peptidase in
NM026024 ubiquitin E2T
BC002064 pleiotrophin
BF660912 RIKEN cDNA
AV327777 Mitochon pt S31
NM138303 Yip1, member 2
BB117494 Arnt2
BB486335 RIKEN cDNA
NM009626 alcohol dehydro
AK018300 RIKEN cDNA
BB609428 Translocase 7
BB535337 RIKEN cDNA

