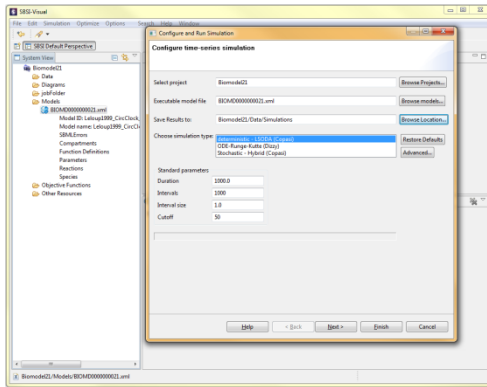
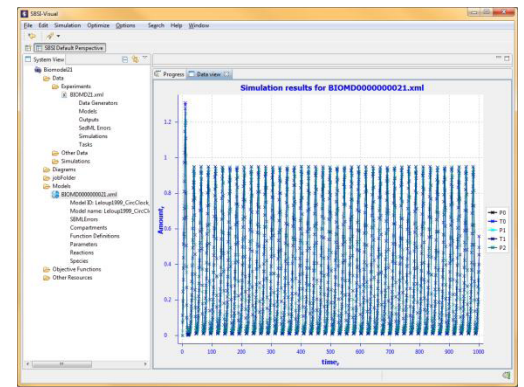


BioModel  
#21

Import

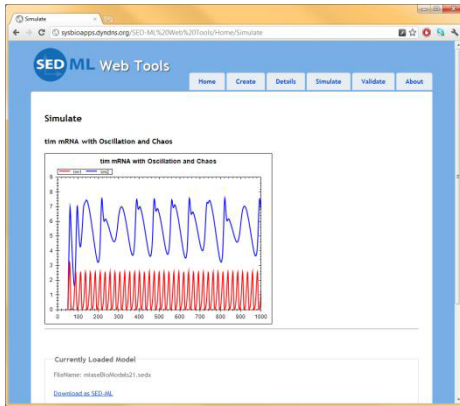


Simulate



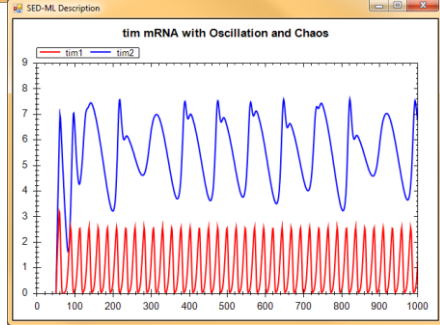
SED-ML

Export /  
Import



Share Online

```
sedml:script
AddTimeCourseSimulation('simulation1', 'KISAO:0000019', 0, 50, 1000, 1000)
AddModel('model1', 'urn:miriam:biomodels.db:BIOAC00000021', 'urn:sedml:language:sbml')
AddModel('model2', 'model1', 'urn:sedml:language:sbml')
AddChange('model2', '/sbml:sbml/sbml:model/sbml:listOfParameters/sbml:parameter
[&id="V_mT"]/@value', '0.28')
AddChange('model2', '/sbml:sbml/sbml:model/sbml:listOfParameters/sbml:parameter
[&id="V_dT"]/@value', '4.8')
AddTask('task1', 'simulation1', 'model1')
AddTask('task2', 'simulation1', 'model2')
AddColumn('time', [['var_time_0', 'task1', 'time']])
AddColumn('tim1', [['v1', 'task1', 'M1']])
AddColumn('tim2', [['v2', 'task2', 'M1']])
AddPlot('plot1', 'tim mRNA with Oscillation and Chaos', [['time', 'tim1'], ['time', 'tim2']]);
```



Edit

```
sedml:script
AddTimeCourseSimulation('sim1', 'KISAO:0000019', 0, 0, 1000, 1000)
AddModel('Leloup1999_circClock_periodic', 'BIOAC0000000021.xml',
'urn:sedml:language:sbml:level-2:version-1')
AddTask('task1', 'sim1', 'Leloup1999_circClock_periodic')
AddColumn('P0_dg', [['P0', 'task1', 'P0']])
AddColumn('T0_dg', [['T0', 'task1', 'T0']])
AddColumn('P1_dg', [['P1', 'task1', 'P1']])
AddColumn('T1_dg', [['T1', 'task1', 'T1']])
AddColumn('P2_dg', [['P2', 'task1', 'P2']])
AddColumn('time_dg', [['time', 'task1', 'time']])
AddReport('dsID', 'DS 1', ['P0_dg', 'T0_dg', 'P1_dg', 'T1_dg', 'P2_dg']);
AddPlot('plotID', 'Plot 1', [['time_dg', 'P0_dg'], ['time_dg', 'T0_dg'],
['time_dg', 'T1_dg'], ['time_dg', 'P1_dg'],
['time_dg', 'T2_dg'], ['time_dg', 'P2_dg']]);
```

