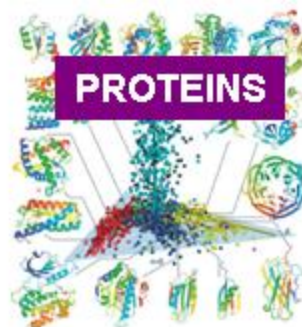


**Cell lysate**  
Purified protein complex  
Sample for PTM  
and/or Quantification analysis  
Single protein of interest on a gel



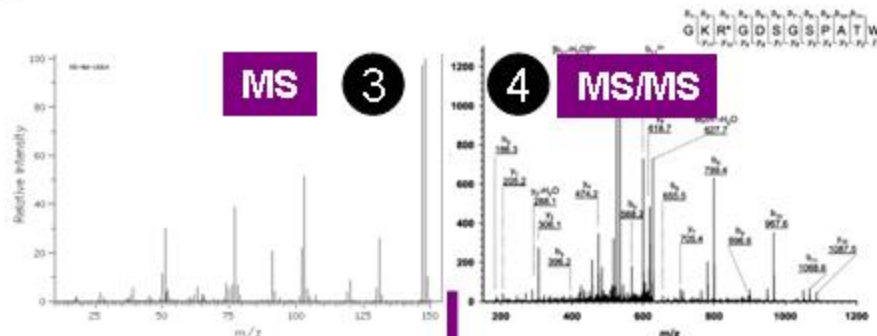
digestion

**PEPTIDE  
mixture**

1

2

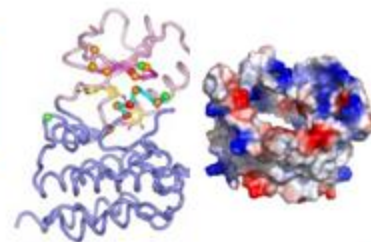
**IONIZATION  
(e.g. MALDI, ESI)**



5

6

**Bioinformatic  
Data-analysis**



**Protein identification (ID)**  
PTM analysis  
Protein Quantification  
Structural Analysis of proteins  
Cellular composition

- ✓ Conversion-data format
- ✓ Spectrum identification with a search engine
- ✓ Validation of identifications
- ✓ Protein inference
- ✓ Organization in local data managements systems
- ✓ Interpretation and classification of the protein lists
- ✓ Transfer to public data repositories