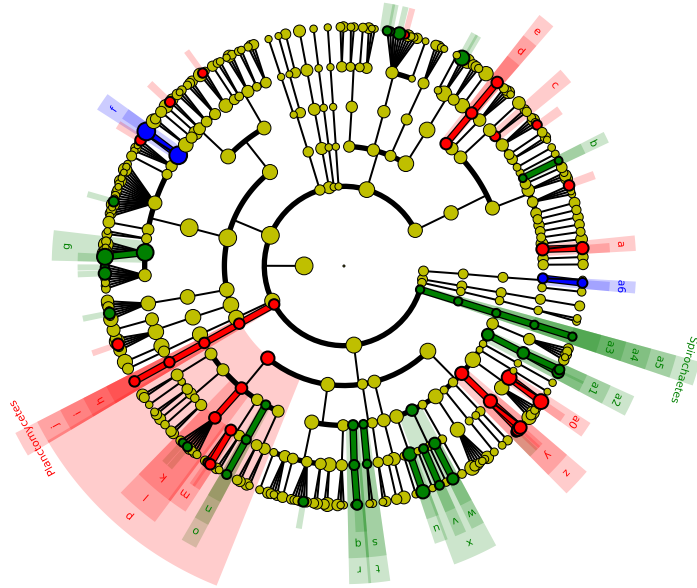


Cladogram

■ CI
■ II
■ Tc



- | | |
|---|--|
| ■ a: Corynebacteriaceae | ■ r: Rhodocyclales |
| ■ b: Mycobacteriaceae | ■ s: Bdellovibrionaceae |
| ■ c: Pseudonocardiaeae | ■ t: Bdellovibrionales |
| ■ d: Rubrobacteraceae | ■ u: Succinivibrionaceae |
| ■ e: Rubrobacterales | ■ v: Colwelliaceae |
| ■ f: Clostridiaceae | ■ w: Pseudoalteromonadaceae |
| ■ g: Peptostreptococcaceae | ■ x: Alteromonadales |
| ■ h: Planctomycetaceae | ■ y: Pasteurellaceae |
| ■ i: Planctomycetales | ■ z: Pasteurellales |
| ■ j: Planctomycetia | ■ a0: Pseudomonadaceae |
| ■ k: Rhodobacteraceae | ■ a1: Vibrionaceae |
| ■ l: Rhodobacterales | ■ a2: Vibrionales |
| ■ m: Acetobacteraceae | ■ a3: Brevinemataceae |
| ■ n: Rickettsiaceae | ■ a4: Spirochaetales |
| ■ o: Rickettsiales | ■ a5: Spirochaetia |
| ■ p: Alphaproteobacteria | ■ a6: Verrucomicrobiaceae |
| ■ q: Rhodocyclaceae | |