

Additional file 2

The adaptive community-response (ACR) method for collecting misinformation on social media

Julian Kauk¹, Helene Kreysa¹, André Scherag^{2, 3}, and Stefan R. Schweinberger^{1, 3, 4}

¹*Department of General Psychology and Cognitive Neuroscience, Friedrich Schiller University Jena, Jena, Germany*

²*Institute of Medical Statistics, Computer and Data Sciences, Jena University Hospital, Jena, Germany*

³*Michael Stifel Center Jena, Jena, Germany*

⁴*German Center for Mental Health (DZPG), Site Jena-Magdeburg-Halle, Germany*

August 29, 2023

Additional figures concerning the ACR method

The following document provides three additional figures concerning the ACR method.

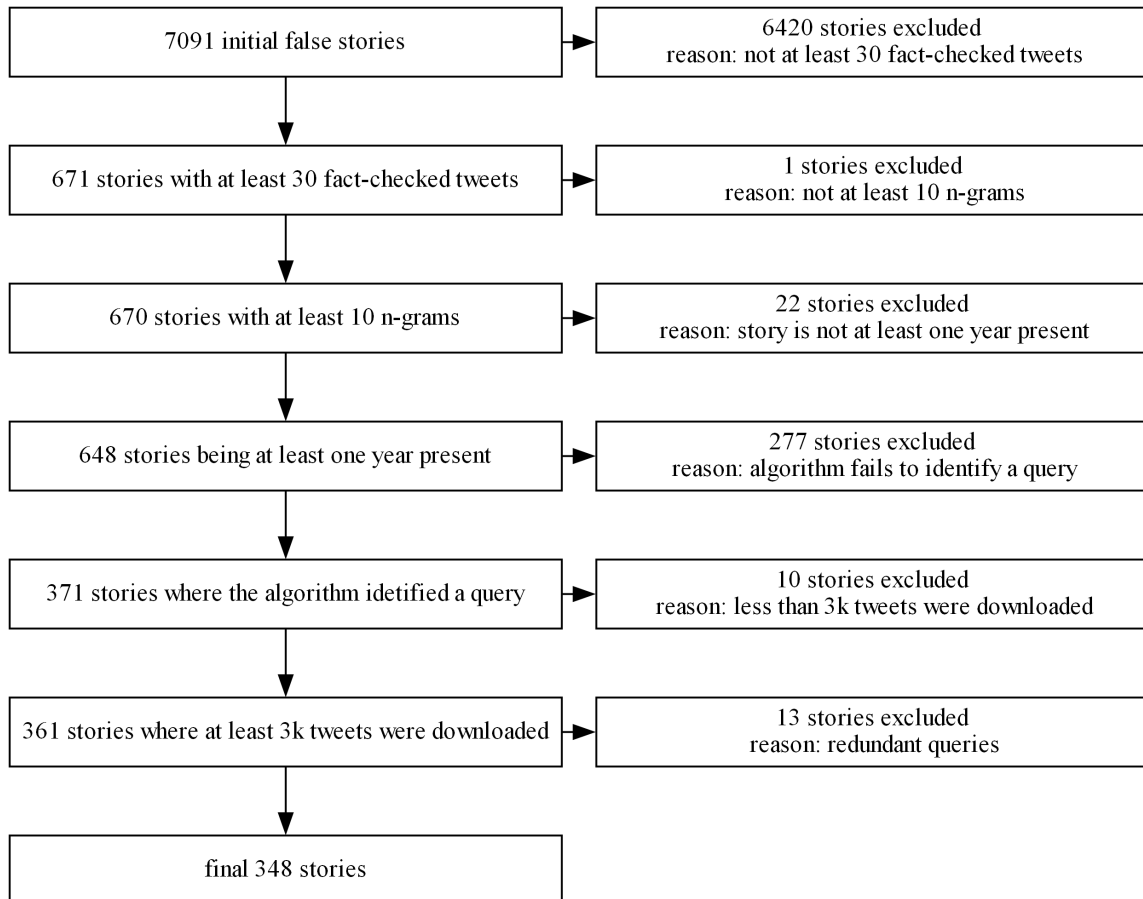


Figure 2: Flowchart of the data collection process.

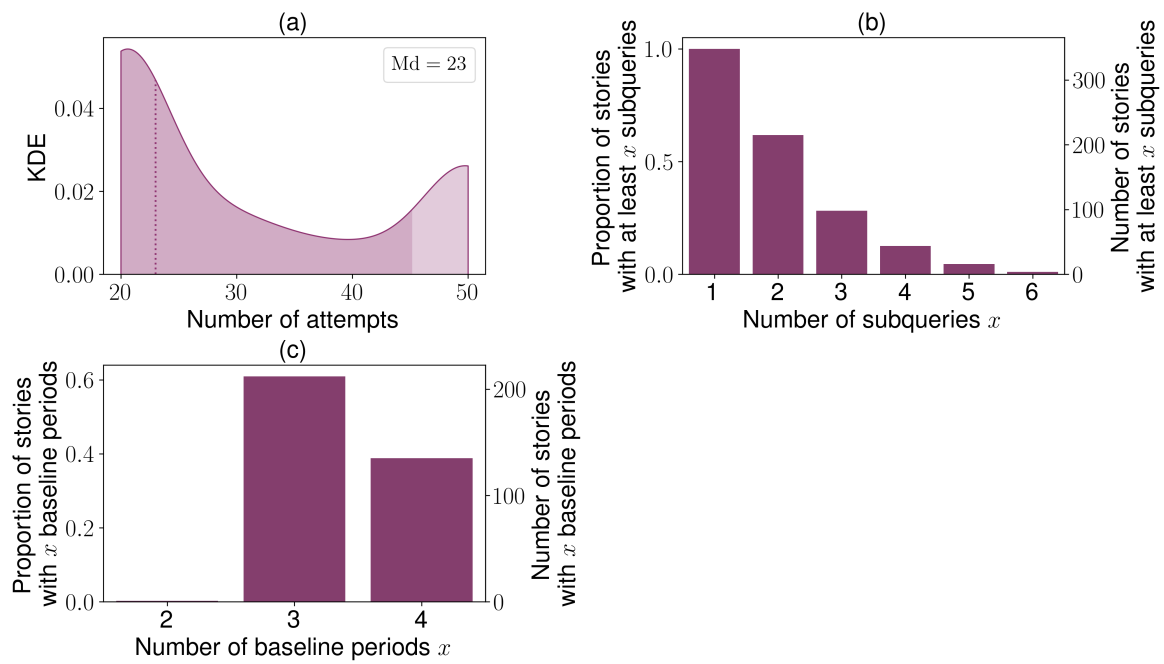


Figure 3: Relevant distributions concerning the data collection process. (a) KDE for the (minimal) number of attempts per story to identify a query. (b) Empirical complementary cumulative distribution function of the number of subqueries. (c) The distribution of the number of baselines.