

Supplementary Figures

EczemaNet: Automating Detection and Severity Assessment of Atopic Dermatitis

Kevin Pan, Guillem Hurault,
Kai Arulkumaran, Hywel C. Williams, and Reiko J. Tanaka

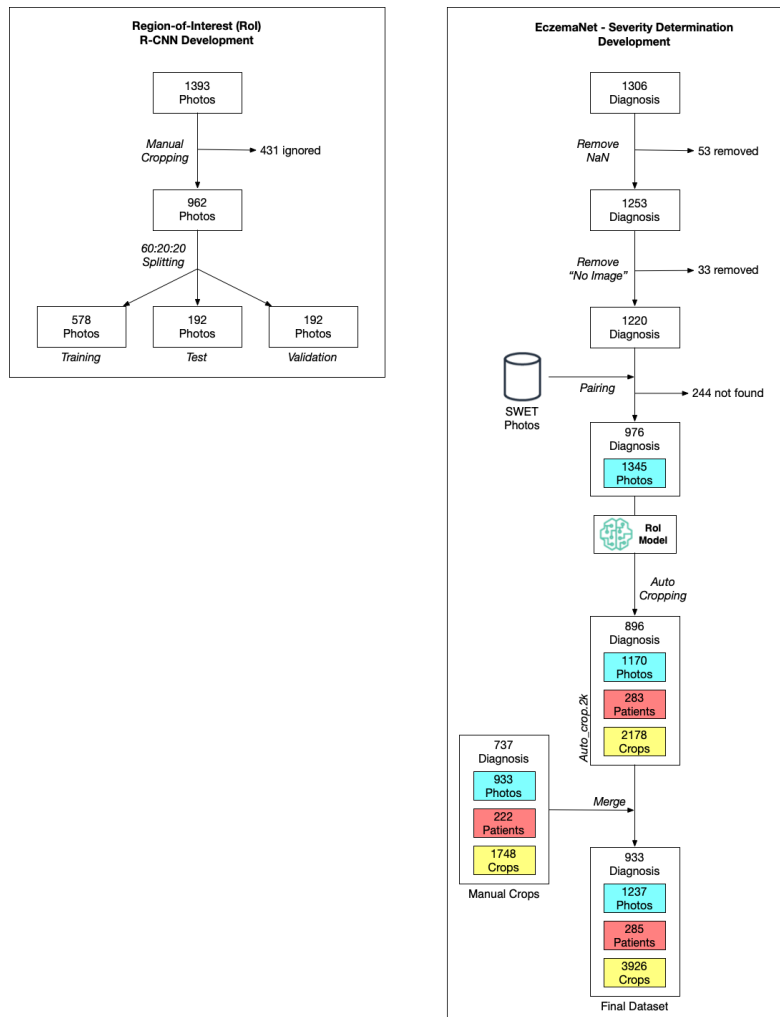


Fig. 1: Data inclusion, exclusion and validation splits.

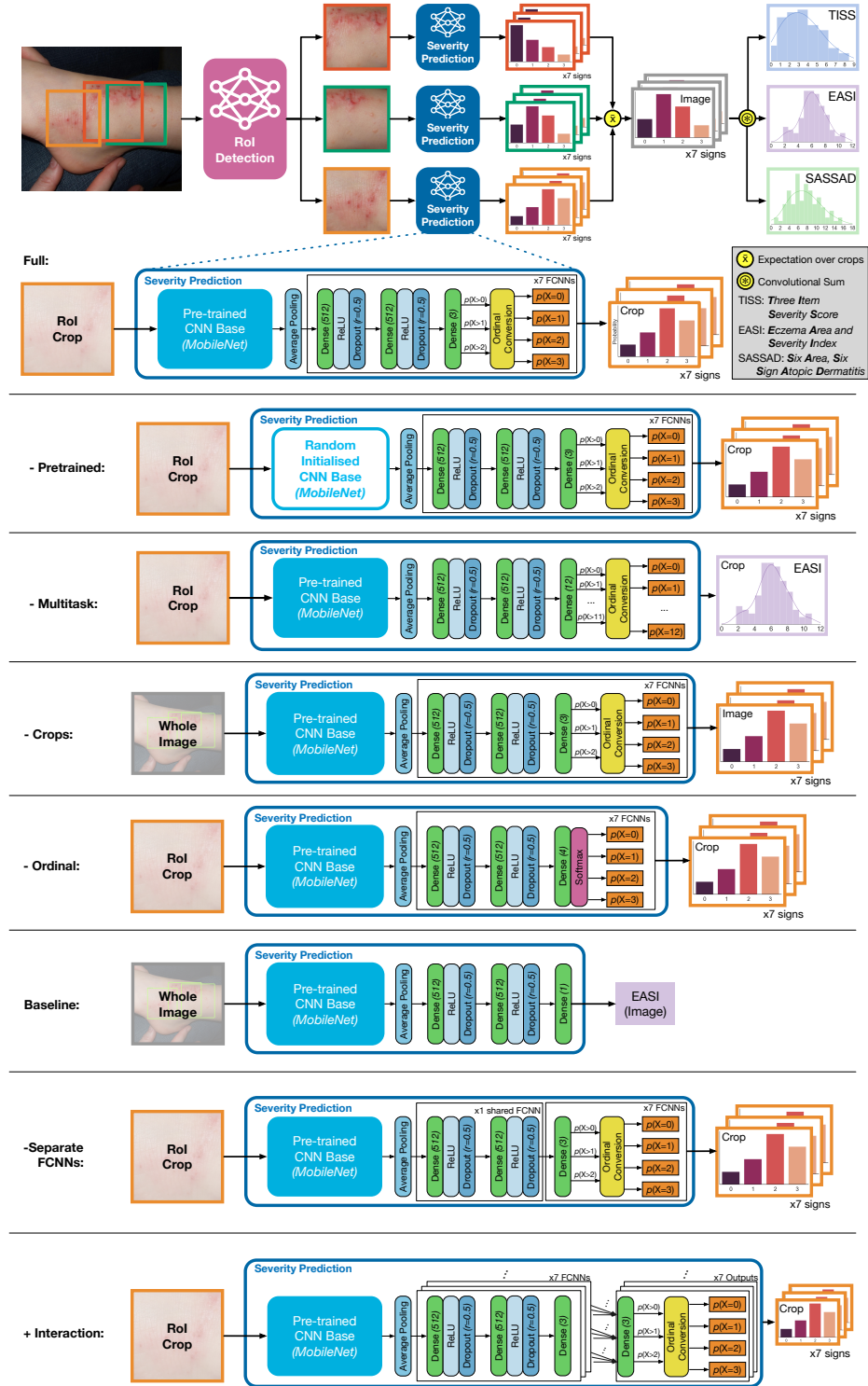


Fig. 2: Architectures of EczemaNet, baselines and ablations.

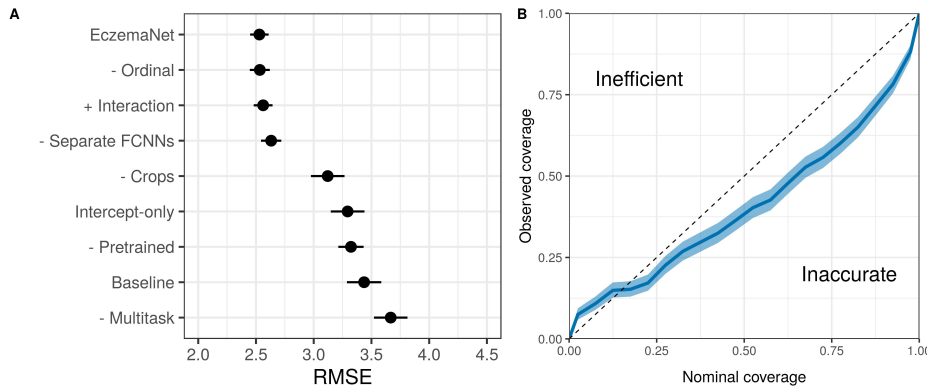


Fig. 3: SASSAD prediction. A) RMSE (mean \pm 1 standard error over cross-validation across models. B) Calibration of highest density prediction intervals (coverage).

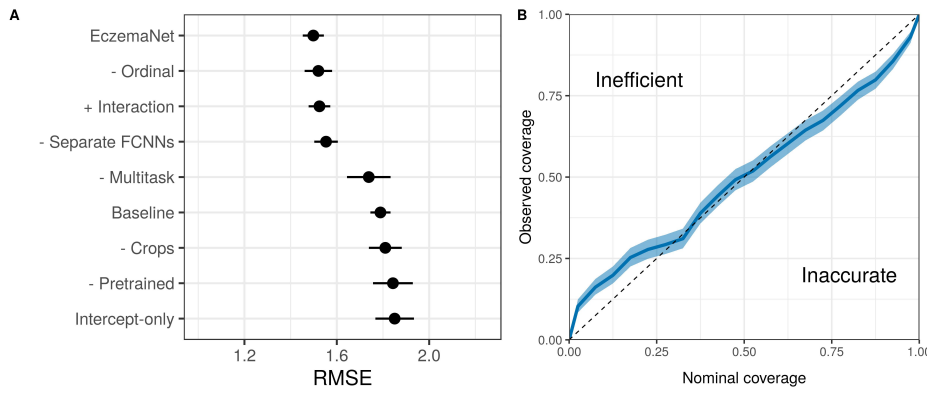


Fig. 4: TISS prediction. A) RMSE (mean \pm 1 standard error over cross-validation) across models. B) Calibration of highest density prediction intervals (coverage).

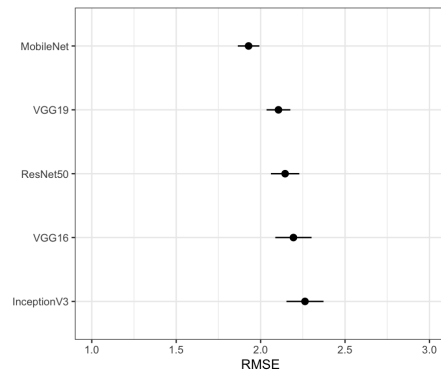


Fig. 5: Base architecture comparisons. RMSE (mean \pm 1 standard error over cross-validation) on EASI across models.