

Southwest Tech and Southwest Tech Foundation

# 2013—2014 ANNUAL REPORT AND 2015 CALENDAR



Southwest  Tech  
*Here.* *Now.*

# Southwest Tech 2013-2014 Annual Report



**Duane M. Ford, Ph.D.**  
College President

Welcome to the combined annual reports of Southwest Wisconsin Technical College and the Southwest Wisconsin Technical College Foundation. Here we highlight the accomplishments of students and staff members as well as the generous support of friends and donors.

In 2013-14, the College served 10,746 students and conferred 761 degrees, diplomas, and certificates. It grew in full-time-equivalent student numbers; grant dollars received; workforce training contracts, revenues, and workers served; college credits earned by high school students through dual enrollment; as well as scholarships and scholarship dollars awarded. The College maintained its extraordinary placement and employer satisfaction rates. Its facilities, equipment, and information technology systems were significantly improved. New partnerships were created with Crossing Rivers Health, Franklin University, and the Southwest Health Network. And finally, groundwork was laid for another great year in 2014-15.

We Southwest Tech Chargers have achieved some remarkable accomplishments. Congratulations and thank you to everyone who contributed!

Please celebrate and share the accomplishments and story of Southwest Tech with family, friends, and prospective students. Have a safe, happy, and productive 2015!

Sincerely,

Duane M. Ford, Ph.D.  
Southwest Tech President

## Southwest Tech District Board



**Eileen Nickels,**  
Chairperson  
Elected Official  
Member  
Appointed 2006



**Jim Kohlenberg**  
Vice Chairperson  
Employer Member  
Appointed 2001



**Darlene Mickelson**  
Secretary  
Employee Member  
Appointed 2012



**Chris Prange**  
Treasurer  
Additional Member  
Appointed 2011



**Missy Fitzsimons**  
Employee Member  
Appointed 2006



**Diane Messer**  
School Administrator  
Member  
Appointed 2012

*College Mission*  
Southwest Tech provides lifelong learning opportunities with an individualized focus for students and communities.



*College Vision*

Southwest Tech will be a leader in learning-centered education.



**Russ Moyer**  
Additional Member  
Appointed 1981



**Rhonda Sutton**  
Additional Member  
Appointed 2010



**Don Tuescher**  
Employer Member  
Appointed 1994

## On the Cover

In the newly renovated Creative Elements Salon located in Building 500 on the Southwest Tech campus, you can enjoy restful and relaxing hair, skin, nail, and salon services—at reasonable prices. Our supervised student stylists provide an unforgettable salon experience. **Call 608.822.2779 to schedule an appointment.**



Pictured are current students and instructors welcoming you to the salon: (L to R) Taylor Marshall, Bagley; MiKayla Meyer, Iron Ridge; Cindy Frohne, Instructor, Muscoda; Natalie Fritz, Boscobel; Kamie Kenyon, Mineral Point; Erica Leahy, Darlington; Stephanie Reuter, Glen Haven; McKenzie Frohne, Muscoda; Barb McCormick, Instructor, Blue River; MacKenzie Clary, Richland Center; and Hailey Coy, Sauk City.



## A Special Thank You to Our Annual Report Sponsors



For all your residential, agriculture, and commercial construction needs, **Jim's Building Center, Inc.**, in Fennimore can do it all! Located on Hwy. 18 East between Dodgeville and Prairie du Chien, Jim's Building Center, Inc., has been serving the Grant County area for over 30 years. At Jim's Building Center, Inc., no job is too big or too small. Visit [www.jimsbuildingcenter.com](http://www.jimsbuildingcenter.com) or call (608) 822-3741.



**Livingston State Bank** has been serving Southwest Wisconsin for over 100 years and is guaranteed to be "The Only Bank You'll Ever Need." For all of your agriculture, commercial, and residential lending needs, contact the Livingston State Bank. Now serving you at three convenient locations and online. Visit [www.livingstonbank.com](http://www.livingstonbank.com) or call (608) 943-6351.



**Sielaff Corporation** partners with its customers to design, engineer, and manufacture flawless steel furniture and furniture components. Their factory in Mineral Point produces exclusive private-label products for retailers throughout the U.S. The company's hallmark is to work with every customer with a spirit of openness and cooperation. Sielaff strives to manufacture all of its products to the highest quality standards. Visit [www.sielaffcorp.com](http://www.sielaffcorp.com).



**Wisconsin Bank & Trust** is a community bank serving the Dane, Grant and Green County areas. With an innovative spirit and a commitment to customer service, Wisconsin Bank & Trust employs experienced professionals with extensive expertise and specialized skill in personal, business, commercial and agricultural banking and lending. Our dedication to community involvement helps us develop relationships with our customers and provide opportunities for our neighbors. Visit [WisconsinBankandTrust.com](http://WisconsinBankandTrust.com). Member FDIC, Equal Housing Lender.

## Crossing Rivers Health Opens Clinic on Southwest Tech Campus



Crossing Rivers Health opened a clinic on the Southwest Tech campus on March 3, 2014, in the Health Sciences Building. An Open House and Ribbon Cutting Ceremony was held on April 1. The clinic is open on Mondays, Tuesdays, and Thursdays and provides primary care services. These services include annual health and wellness visits, health promotion and maintenance,

disease prevention, diagnosis and treatment, general consultation and referrals. Dental services and behavioral health services will be added in the near future.

In September, the Wisconsin Technical College System (WTCS) Board awarded its "Futuremakers Partner" award to Crossing Rivers Health of Prairie du Chien. The award recognizes the unique and dynamic partnerships between Wisconsin's technical colleges and their employer partners. Crossing Rivers has a nearly 30-year partnership with Southwest Tech and it continues to be one of continuous growth.

Crossing Rivers staff actively participate on advisory committees in Southwest Tech's health care programs. In addition, Crossing Rivers provides clinical experiences for students, has donated equipment to the College, and annually contributes more than \$17,000 for scholarships and tuition assistance for employees who enroll in Southwest Tech's health occupations training.

## Southwest Tech Launches New Website and E-Brochures

The College launched a new website format on January 1, 2014, to improve the online user experience and provide easy access to college information. The new layout includes rotating banner ads and special features on the homepage along with many useful tools including an online application, Career Coach, curriculum, financial aid, and much more.

A new and innovative tool found on the website is a customized e-brochure. E-brochures allow the user to download and print information that is of interest to them including:

- Up-to-date Program Information
- Advising & Counseling Services
- Career Coaching
- Career Placement Services
- Child Care Center
- Dining Services
- Disability Services
- Housing
- Learning Resources
- Student Life
- Testing Center
- Paying for College

Visit [www.swtc.edu](http://www.swtc.edu) to view current and future events and all things Southwest Tech.

## Southwest Tech Hosts Statewide Ag Day



Southwest Tech hosted a statewide National Ag Day Celebration on March 25, 2014, in the Ag and Auto Building. Guests had the opportunity

to experience hands-on activities relating to technology in agriculture including demonstrations in the areas of GPS drones presented by DMZ Aerial, precision agriculture, farm safety and rural emergency response featuring a grain bin extraction and a mobile human patient simulator used for innovative emergency response training, artificial insemination presented by Select Sires, and agriculture equipment provided by Case IH and Finney Equipment. Industry partner Organic Valley served milk.

The statewide event included participation by other colleges in the Wisconsin Technical College

System who discussed agriculture educational opportunities through the state of Wisconsin. Southwest Tech showcased Agribusiness/Science Technology, Agricultural Power and Equipment Technician, Dairy Herd Management and upcoming courses available through the Farm Business and Production Management program.

The event featured statewide speakers including: Governor Scott Walker, Lt. Governor Rebecca Kleefisch, Wisconsin Department of Agriculture Secretary Ben Brancel, WTCS President Morna Foy, Alice in Dairyland Kristin Olson, Southwest Tech President Duane Ford, Southwest Tech District Board Member Russ Moyer, WTCS State Board member Becky Levzow, Hartung Brothers former Human Resource Manager Jerry Brunner, and Southwest Tech student Dan Kieffer.

*(L-R) Duane Ford, Russell Moyer, Rebecca Kleefisch, Scott Walker, Morna Foy, Becky Levzow, Kristin Olson, and Ben Brancel.*



## Franklin University and Southwest Tech Sign Co-Location Agreement

Franklin University and Southwest Tech hosted an event on April 1, 2014, to officially mark the signing of the co-location agreement between the two institutions, offering Franklin classes at the main Southwest Tech campus in Fennimore. Through the agreement, our two colleges created a pathway for students to complete their bachelor degree by transferring their Southwest Tech associate's degree to Franklin. Students will be able to take face-to-face classes towards the Allied Healthcare Management degree or the Bachelors of Science in Nursing at Franklin University.

Through the new co-location agreement, students will benefit from Franklin's acceptance of previously earned college and professional education credits, minimizing the time and money it takes to earn a degree. The transfer-friendly policy, coupled with the University's convenient class schedules and regionally accredited curriculum allow today's adult students to achieve their education and career goals. It will assist the student to balance their personal, career, and financial responsibilities, all while staying within their own community.

*Southwest Tech and Franklin University officially marked the signing of the co-location agreement between the two institutions, allowing Franklin to offer bachelor degree classes at the main Southwest Tech campus in Fennimore. Participating in the event were (L to R) front row: Katie Garrity, Southwest Tech Dean of Health Education and Public Safety; Morna Foy, Wisconsin Technical College System President; Mindy Johnson, Southwest Tech Career Placement Coordinator; and Sherry Mercurio, Franklin University Director of Public Relations; second row: Dr. Phil Thomas, Southwest Tech Vice President for Student and Academic Affairs; Dr. Duane Ford, Southwest Tech President; Dr. David Decker, Franklin University President; Dr. Leslie Matthew, Franklin University Program Chair of Healthcare Management; Bill Chan, Franklin University Executive Director of Domestic Expansion and Regional Campuses; and Anthony Schreiter, Franklin University Technical College Regional Manager.*





## Dual Enrollment Continues Strong Growth

Dual Enrollment is for high school students who can earn Southwest Tech college credit for taking courses in high school that have an Advanced Standing or Transcribed Credit agreement. Despite the declining enrollment in our thirty K-12 schools, our Dual Enrollment numbers have increased over the last several years.

In 2012-2013, Southwest Tech had 749 students recommended for Advanced Standing Credit. In 2013-2014, the number decreased to 340 because the social science and communications areas were changed to Transcribed Credit. For the 2012-2013 school year, 569 students earned Transcribed Credit. In 2013-2014, 1,070 students earned Transcribed Credit. That is an increase of 501 in one year! These numbers can include students who earn more than one credit by taking multiple Advanced Standing or

Transcribed Credit courses in their high school.

The good news is that students can earn credit in high school for courses at Southwest Tech. It saves the student time and money as they pursue their post-secondary college plans. Students who choose to attend another college, can request Southwest Tech transcripts to be sent to the college of their choice for consideration of transfer credits. The other benefit to the students is that there is no cost to them to earn the Advanced Standing or Transcribed Credit.

Southwest Tech will continue to work with our thirty area high schools to provide Dual Enrollment opportunities for the high school students in our area.



*Students from Darlington High School celebrate Dual Enrollment Day on April 1.*

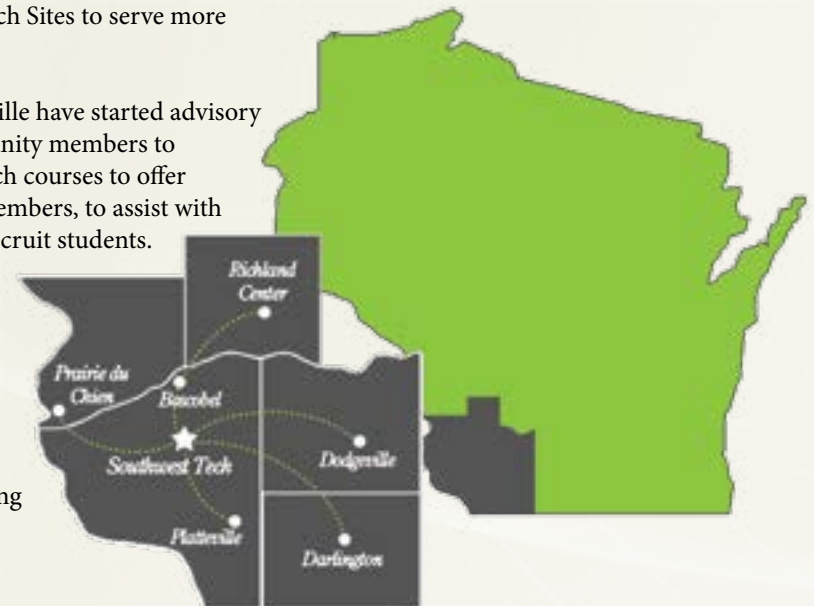
## Southwest Tech Continues Growth with Outreach Sites

Southwest Tech has had Outreach sites in Boscobel, Darlington, Dodgeville, Platteville, Prairie du Chien, and Richland Center for years that includes GED/HSED preparation, adult basic education, English language learner, computer literacy, computer applications, drivers education, group dynamics, and programs that help bridge students from unemployment to work. Over the last few years, the offerings have expanded and additional courses are being added at some of the locations. Prospective students can meet with a College recruiter at the outreach sites if it is more convenient than traveling to the Fennimore campus. One of Southwest Tech's strategic projects is to identify additional ways we can use our Outreach Sites to serve more students.

Platteville and Dodgeville have started advisory boards of local community members to offer advice about which courses to offer for area community members, to assist with training, and to help recruit students. The advisory boards recommended courses such as Excel, Basic Photography, Intro to iPads, Intro to Facebook, and Work Readiness course offerings. Ribbon cutting ceremonies were held

in Platteville on September 17, 2013, and in Dodgeville on December 10, 2013, at the Outreach sites. Southwest Tech will continue to develop advisory boards at our other locations in the near future.

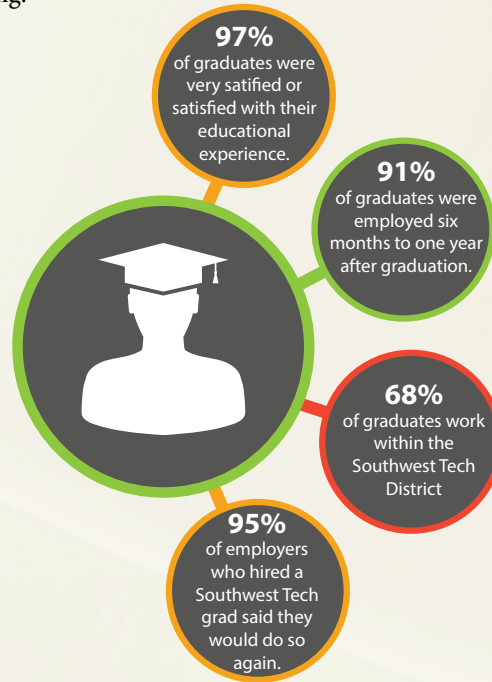
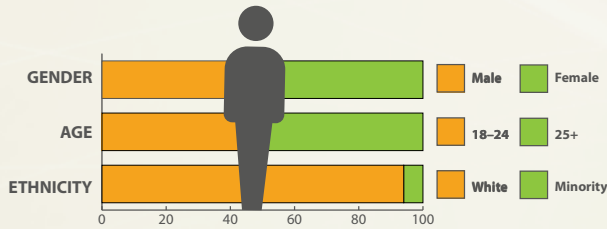
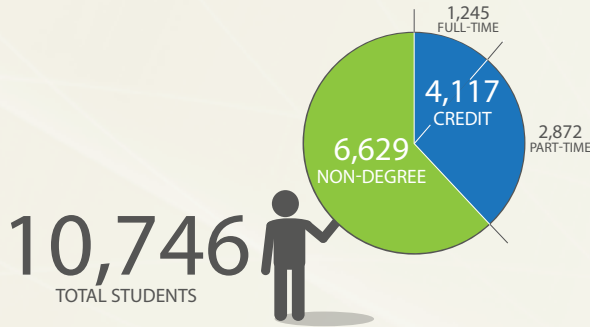
ITV (Interactive Television) equipment was installed in the Dodgeville, Platteville, and Richland Center locations through a grant that was received by the College. The ITV equipment will be used to broadcast classes to the Outreach Sites in health care, business, general studies, and more. It is a great option for students in those communities to take Southwest Tech courses without having to drive to Fennimore as often.



## About Southwest Tech

Southwest Tech opened its doors in 1967 as one of the 16 two-year, non-profit, open access institutions within the Wisconsin Technical College System. The College serves 3,800 square miles including 30 school districts in and near Crawford, Grant, Iowa, LaFayette, Richland, Dane, Green, Sauk, and Vernon Counties. The Higher Learning Commission and the North Central Association

of Colleges and Schools accredit us. Southwest Tech offers Career & Technical Education/Training with 40+ Associate of Applied Science Degree and Technical Diploma programs, numerous certificates, customized training for incumbent workers, continuing education, Adult Basic Education, and GED/HSED boot camps and testing.



## Grant Funding

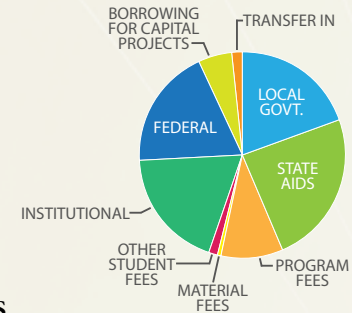
	Number Awarded	Annual Value
Federal/Private	13	\$1,538,181
State	36	\$1,396,071
<b>Total Grants and Value</b>	<b>49</b>	<b>\$2,934,252</b>

## K-12 Partnerships

Southwest Tech believes that partnerships with our district's high schools is the key to strengthening communities by providing opportunities that offer convenience and savings. The College currently has 165 articulation agreements with area high schools, serving nearly 1,400 high school students. Of the total number of high school graduates, 26.3% chose to attend Southwest Tech.



## Southwest Wisconsin Technical College 2013-2014 Budget Summary

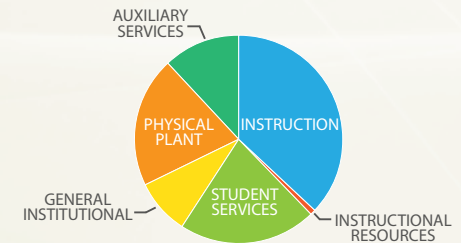


### REVENUES

Local Government	\$9,320,000
State Aids	11,358,000
Program Fees	4,623,000
Material Fees	350,000
Other Student Fees	625,000
Institutional	8,933,000
Federal	8,879,000
Borrowing for Capital Projects	2,500,000
Transfer In	772,000
<b>Total Revenues</b>	<b>\$47,360,000</b>

### EXPENDITURES

Instruction	\$17,541,700
Instructional Resources	446,100
Student Services	10,082,000
General Institutional	4,083,900
Physical Plant	9,556,300
Auxiliary Services	5,650,000
<b>Total Expenditures</b>	<b>\$47,360,000</b>





## Agreements Improve Access to Life Saving Skills



In a move to improve efficiency and access to life saving skills, Southwest Tech has entered into

multiple agreements throughout our District to provide increased access to CPR and First Aid training.

Southwest Tech has long been the facilitator for State accredited lifesaving training in Southwest Wisconsin through its campus in Fennimore. In addition to State accreditation, our CPR training is nationally accredited by the American Heart Association. In a response to increased demand and to improve access to training in local communities, Southwest Tech has partnered with the Barneveld Area Rescue Squad, Dodgeville Area Ambulance Service, Grant Regional Health Center, Platteville EMS, Richland Emergency Management, and the Richland Hospital to provide training to EMTs and their community members right within their own community or within the immediate area.

The purpose is to support the first steps in the American Heart Association's Chain of Survival, Early CPR and Rapid Defibrillation. These partnerships will make it easier for more people to become trained in CPR and First Aid and ultimately save more lives. Most community members already look to their local EMS and Healthcare providers as the place to receive training and assistance in an emergency. These partnerships will allow local providers to offer lifesaving skills training in the most efficient way for them and their community. We thank these organizations for their partnerships and dedication to their communities.

## Direct Entry Midwife Program Granted Accreditation

On September 4, 2014, the Midwifery Education Accreditation Council (MEAC) granted initial programmatic accreditation to the Direct Entry Midwifery Program. It is the first time a public institution of higher education in the United States has been granted this accreditation. The accreditation is in effect until September 3, 2019.



Direct Entry Midwife is a two-year associate degree program that trains professional midwives who will qualify for certification and licensure in Wisconsin. Graduates of Direct Entry Midwife will provide hands-on holistic care for women of childbearing years and partner with women and other collaborative healthcare partners throughout the childbearing process.

## New Programs in Response to Workforce Needs

Southwest Tech continually partners with area employers and evaluates the workforce needs and training required. This year, the following new programs were added to our offerings.

### Cancer Information Management

Graduates will provide support for cancer program development and serve as a valuable resource for cancer information with the ultimate goal of preventing and controlling cancer.

### Health Information Technology

Prepares students to become experts in patient health data management by providing skills and knowledge to collect, analyze, monitor, maintain and report health data according to established data quality principles, legal and information security standards, and professional best-practice guidelines.

### Industrial Mechanic

Teaches technical skills in mechanical drive systems, electrical systems, hydraulics and pneumatics, laser alignment, basic welding and

machining, and many other in-demand skillsets that employers are looking for.

### Laboratory Science Technician

Trains students to conduct or assist in laboratory analysis and reporting of food quality and other industry testing standards in the food processing and agriculture industries.

### Supervisory Management

Designed to meet the increasing demand for trained supervisors and provides supervisory training for individuals currently employed in supervisory positions and also those who wish to prepare themselves for such a position.

### Supply Chain Management

Includes all business activities from sourcing raw materials to producing a finished product to delivery of the product to a customer.

## Ammon Hired as Dean of Business, Management and General Studies



Dr. Richard Ammon joined the Southwest Tech team in July 2014 as the Dean of Business, Management and General Studies. Dr. Ammon is a native of Monroe, WI and brings 19 years experience in

university and two-year college leadership and a deep commitment to career and technical education. Previously, Dr. Ammon was the Associate Dean of the School of Health Sciences and Associate Dean for the School of Business at Milwaukee Area Technical College. As the Dean of Business, Management, and General Studies, Ammon's duties will include leadership of the Business and General Education academic areas. Ammon is looking forward to utilizing his experience to service business and industry in Southwest Wisconsin through academic programs.

Dr. Ammon received his Doctorate in Educational Leadership Studies with an emphasis on Educational Technology from West Virginia University. He also obtained a Master of Science Degree in Education with an emphasis on Business Management from Frostburg State University and a Bachelor of Science Degree in Agriculture with an emphasis on Business and Industry from the University of Wisconsin-Madison.



*"Having Southwest Tech close-by allows us to hire our local graduates who keep our community growing."*

Having a mother as the school guidance counselor may not always be a great thing, but for Deanne (Rohn) Kepler it was. Knowing that Deanne had a passion for doing hair, her mom Peggy suggested Southwest Tech's Cosmetology program because of its closeness to home. DeAnne enjoyed all the elements of her classes, stating that her instructors "Dorothy Shaw and Geri Dearborn were quality instructors that gave me the skills necessary to be successful in my career." For over 23 years, Deanne has been a salon owner who still enjoys her career choice every day. When looking to hire new staff for DeAnne's Designs & Electrology located in Richland Center, DeAnne continually looks to Southwest Tech for high quality and highly skilled graduates.

DeAnne [Rohn] Kepler

1977 GRADUATE, COSMETOLOGY



# JANUARY 2015

NATIONAL BLOOD DONOR MONTH

SUNDAY	MONDAY	TUESDAY	WEDNESDAY	THURSDAY	FRIDAY	SATURDAY																																																																													
		<p>DECEMBER 2014</p> <table border="1"> <tr><td>S</td><td>M</td><td>T</td><td>W</td><td>T</td><td>F</td><td>S</td></tr> <tr><td>1</td><td>2</td><td>3</td><td>4</td><td>5</td><td>6</td><td></td></tr> <tr><td>7</td><td>8</td><td>9</td><td>10</td><td>11</td><td>12</td><td>13</td></tr> <tr><td>14</td><td>15</td><td>16</td><td>17</td><td>18</td><td>19</td><td>20</td></tr> <tr><td>21</td><td>22</td><td>23</td><td>24</td><td>25</td><td>26</td><td>27</td></tr> <tr><td>28</td><td>29</td><td>30</td><td>31</td><td></td><td></td><td></td></tr> </table>	S	M	T	W	T	F	S	1	2	3	4	5	6		7	8	9	10	11	12	13	14	15	16	17	18	19	20	21	22	23	24	25	26	27	28	29	30	31				<p>FEBRUARY 2015</p> <table border="1"> <tr><td>S</td><td>M</td><td>T</td><td>W</td><td>T</td><td>F</td><td>S</td></tr> <tr><td>1</td><td>2</td><td>3</td><td>4</td><td>5</td><td>6</td><td>7</td></tr> <tr><td>8</td><td>9</td><td>10</td><td>11</td><td>12</td><td>13</td><td>14</td></tr> <tr><td>15</td><td>16</td><td>17</td><td>18</td><td>19</td><td>20</td><td>21</td></tr> <tr><td>22</td><td>23</td><td>24</td><td>25</td><td>26</td><td>27</td><td>28</td></tr> </table>	S	M	T	W	T	F	S	1	2	3	4	5	6	7	8	9	10	11	12	13	14	15	16	17	18	19	20	21	22	23	24	25	26	27	28	1	2	3
S	M	T	W	T	F	S																																																																													
1	2	3	4	5	6																																																																														
7	8	9	10	11	12	13																																																																													
14	15	16	17	18	19	20																																																																													
21	22	23	24	25	26	27																																																																													
28	29	30	31																																																																																
S	M	T	W	T	F	S																																																																													
1	2	3	4	5	6	7																																																																													
8	9	10	11	12	13	14																																																																													
15	16	17	18	19	20	21																																																																													
22	23	24	25	26	27	28																																																																													
4	5	6	7	8	9	10																																																																													
11	12	13	14	15	16	17																																																																													
	Southwest Tech Spring Term Begins		Staff In-Service Southwest Tech Closed to Public																																																																																
18	19	20	21	22	23	24																																																																													
	Martin Luther King, Jr. Day Southwest Tech Closed																																																																																		
25	26	27	28	29	30	31																																																																													



*"The best part of my job is when students tell me the program made a difference in their life."*

After graduating in 2003 from the Performance Engine Machining program and the Machine Tool program in 2004, Jason opened Robbins Precision Machine located in New Diggins, WI. Impressed with Jason as a student, retired Machine Tool Instructor Cecil Allen would ask Jason to fill in as a substitute for the program when needed. By 2011, Jason was teaching full-time as the CNC Setup/Operation program instructor, helping students succeed at pursuing careers in manufacturing. "In just three years it seems like I can't go anywhere without seeing someone I've taught or trained," stated Robbins. Jason estimates he has taught over 60 students at Southwest Tech or through company on-site contract training, and he is looking forward to educating many more in the future.

## Jason Robbins

2003 AND 2004 GRADUATE, MACHINE TOOL AND CNC SETUP/OPERATION INSTRUCTOR



# FEBRUARY 2015

CAREER & TECHNICAL EDUCATION MONTH

BLACK HISTORY MONTH

NATIONAL CHILDREN'S DENTAL HEALTH MONTH

AMERICAN HEART MONTH

SUNDAY	MONDAY	TUESDAY	WEDNESDAY	THURSDAY	FRIDAY	SATURDAY
1	2	3	4	5	6	7
8	9	10	11	12	13	14 <small>Valentine's Day</small>
15	16 <small>Presidents' Day</small>	17	18	19 <small>Chinese New Year</small>	20	21
22	23	24	25	26	27	28

JANUARY 2015

S	M	T	W	T	F	S
				1	2	3
4	5	6	7	8	9	10
11	12	13	14	15	16	17
18	19	20	21	22	23	24
25	26	27	28	29	30	31



MARCH 2015

S	M	T	W	T	F	S
1	2	3	4	5	6	7
8	9	10	11	12	13	14
15	16	17	18	19	20	21
22	23	24	25	26	27	28
29	30	31				

**SIELAFF CORPORATION**  
DESIGN. ENGINEER. MANUFACTURE.

**Southwest**  
1977 **Tech**



*"Providing scholarships and assisting students at Southwest Tech is an investment in our communities that ensures a viable workforce for Southwest Wisconsin."*

Mike, Katie, and their 8 siblings were born and raised in Prairie du Chien by Robert and Marion Garrity. Robert and Marion owned and ran the Garrity Funeral Home, where time and service has honored the family name in the scenic river valley of Southwest Wisconsin since 1946. Mike is now the sole proprietor and carries the tradition of Family Funeral Service forward, something Bob and Marion always hoped for their life's work. Katie is the Dean of Health Education and Public Safety at Southwest Tech. Mike and Katie had the need for education and skill acquisition instilled in them by their parents at an early age. Contributions, along with community involvement, were values modeled by their parents throughout their lives. The Garrity family has carried on those traditions. Both Mike and Katie have seen firsthand the positive impact Southwest Tech has on lives in the region and are happy to play a small part in student success.



Katie Garrity & Michael Garrity

FUTUREMAKERS



# MARCH 2015

WOMEN'S HISTORY MONTH NATIONAL NUTRITION MONTH

SUNDAY	MONDAY	TUESDAY	WEDNESDAY	THURSDAY	FRIDAY	SATURDAY																																																																													
1	2	3	4	5	6	7																																																																													
8	9	10	11	12	13	14																																																																													
Daylight Savings Time Begins	Southwest Tech Spring Break—No Classes																																																																																		
15	16	17	18	19	20	21																																																																													
		St. Patrick's Day			Spring Begins																																																																														
22	23	24	25	26	27	28																																																																													
29	30	31	<p>FEBRUARY 2015</p> <table border="1"> <tr><td>S</td><td>M</td><td>T</td><td>W</td><td>T</td><td>F</td><td>S</td></tr> <tr><td>1</td><td>2</td><td>3</td><td>4</td><td>5</td><td>6</td><td>7</td></tr> <tr><td>8</td><td>9</td><td>10</td><td>11</td><td>12</td><td>13</td><td>14</td></tr> <tr><td>15</td><td>16</td><td>17</td><td>18</td><td>19</td><td>20</td><td>21</td></tr> <tr><td>22</td><td>23</td><td>24</td><td>25</td><td>26</td><td>27</td><td>28</td></tr> </table>	S	M	T	W	T	F	S	1	2	3	4	5	6	7	8	9	10	11	12	13	14	15	16	17	18	19	20	21	22	23	24	25	26	27	28	<p>APRIL 2015</p> <table border="1"> <tr><td>S</td><td>M</td><td>T</td><td>W</td><td>T</td><td>F</td><td>S</td></tr> <tr><td></td><td></td><td></td><td>1</td><td>2</td><td>3</td><td>4</td></tr> <tr><td>5</td><td>6</td><td>7</td><td>8</td><td>9</td><td>10</td><td>11</td></tr> <tr><td>12</td><td>13</td><td>14</td><td>15</td><td>16</td><td>17</td><td>18</td></tr> <tr><td>19</td><td>20</td><td>21</td><td>22</td><td>23</td><td>24</td><td>25</td></tr> <tr><td>26</td><td>27</td><td>28</td><td>29</td><td>30</td><td></td><td></td></tr> </table>	S	M	T	W	T	F	S				1	2	3	4	5	6	7	8	9	10	11	12	13	14	15	16	17	18	19	20	21	22	23	24	25	26	27	28	29	30				
S	M	T	W	T	F	S																																																																													
1	2	3	4	5	6	7																																																																													
8	9	10	11	12	13	14																																																																													
15	16	17	18	19	20	21																																																																													
22	23	24	25	26	27	28																																																																													
S	M	T	W	T	F	S																																																																													
			1	2	3	4																																																																													
5	6	7	8	9	10	11																																																																													
12	13	14	15	16	17	18																																																																													
19	20	21	22	23	24	25																																																																													
26	27	28	29	30																																																																															



*"The health science programs are built so you can start your career the day after you graduate."*

When thinking about his future plans, Derek McCall knew he really enjoyed his chemistry classes, but didn't know if he wanted to work in science or medicine. "I went to a four-year college first, but I felt like it was geared toward the history of the science rather than the actual use of it. The same went for the labs; they weren't giving me paths or ideas of how I could actually put chemistry towards a career." Derek decided to take a break from college, gather his thoughts, and refocus. It was Derek's father, Tom, who was finishing his Associate Degree in Nursing at Southwest Tech, that told him about the new Medical Laboratory Technician program the College started. Derek explained, "The program was lab-based, in a healthcare field, and fit my fascination of working in a lab environment. I started the program that fall, and within the first week, I knew it was the field for me. I'm helping people even if it's not directly, which kind of makes medical lab techs the unsung heroes in healthcare."

# Derek McCall

2013 GRADUATE, MEDICAL LABORATORY TECHNICIAN



# APRIL 2015

NATIONAL DONATE LIFE MONTH

NATIONAL AUTISM AWARENESS MONTH

SUNDAY	MONDAY	TUESDAY	WEDNESDAY	THURSDAY	FRIDAY	SATURDAY																																																	
		<p>MARCH 2015</p> <table border="1"> <tr> <td>S</td><td>M</td><td>T</td><td>W</td><td>T</td><td>F</td><td>S</td> </tr> <tr> <td>1</td><td>2</td><td>3</td><td>4</td><td>5</td><td>6</td><td>7</td> </tr> <tr> <td>8</td><td>9</td><td>10</td><td>11</td><td>12</td><td>13</td><td>14</td> </tr> <tr> <td>15</td><td>16</td><td>17</td><td>18</td><td>19</td><td>20</td><td>21</td> </tr> <tr> <td>22</td><td>23</td><td>24</td><td>25</td><td>26</td><td>27</td><td>28</td> </tr> <tr> <td>29</td><td>30</td><td>31</td><td></td><td></td><td></td><td></td> </tr> </table>	S	M	T	W	T	F	S	1	2	3	4	5	6	7	8	9	10	11	12	13	14	15	16	17	18	19	20	21	22	23	24	25	26	27	28	29	30	31					1 April Fools' Day	2 Staff In-Service Southwest Tech Closed to Public	3 Southwest Tech Closed	4							
S	M	T	W	T	F	S																																																	
1	2	3	4	5	6	7																																																	
8	9	10	11	12	13	14																																																	
15	16	17	18	19	20	21																																																	
22	23	24	25	26	27	28																																																	
29	30	31																																																					
5 Easter	6	7	8	9	10	11																																																	
12	13	14	15 Tax Day	16	17	18																																																	
19	20 Patriots' Day	21	22 Administrative Professionals Day Earth Day	23	24 Arbor Day	25																																																	
26	27	28	29	30	<p>MAY 2015</p> <table border="1"> <tr> <td>S</td><td>M</td><td>T</td><td>W</td><td>T</td><td>F</td><td>S</td> </tr> <tr> <td></td><td></td><td></td><td></td><td></td><td>1</td><td>2</td> </tr> <tr> <td>3</td><td>4</td><td>5</td><td>6</td><td>7</td><td>8</td><td>9</td> </tr> <tr> <td>10</td><td>11</td><td>12</td><td>13</td><td>14</td><td>15</td><td>16</td> </tr> <tr> <td>17</td><td>18</td><td>19</td><td>20</td><td>21</td><td>22</td><td>23</td> </tr> <tr> <td>24</td><td>25</td><td>26</td><td>27</td><td>28</td><td>29</td><td>30</td> </tr> <tr> <td></td><td></td><td></td><td></td><td></td><td>31</td><td></td> </tr> </table>	S	M	T	W	T	F	S						1	2	3	4	5	6	7	8	9	10	11	12	13	14	15	16	17	18	19	20	21	22	23	24	25	26	27	28	29	30						31		
S	M	T	W	T	F	S																																																	
					1	2																																																	
3	4	5	6	7	8	9																																																	
10	11	12	13	14	15	16																																																	
17	18	19	20	21	22	23																																																	
24	25	26	27	28	29	30																																																	
					31																																																		



*"Whatever your reason for considering Southwest Tech, explore it and you will find a career opportunity for you there."*

Kari Wunderlin wears many hats. She is the Branch Manager of First Merit Bank in Fennimore, a school and community volunteer, Fennimore Chamber member, wife, mom, Southwest Tech Advisory Board member, Southwest Tech alumna, and a life-long learner. Kari first attended Southwest Tech in 1997, completing the one-year Accounting Assistant technical diploma program, applying lessons in class and on the job to advance her career at the bank to Branch Manager. Kari's involvement continued with Southwest Tech as an active alumna and advocate for Southwest Tech. As her career evolved, so did her educational needs. In 2011, Kari graduated with an Associate Degree in Supervisory Management and certificates in Quality Management, Leadership Development, and Human Resource Management. "It was tough to balance work and home with school, but it is doable. Don't say you can't, say you can. I think if you work hard and put your mind to something you can accomplish your dreams, without excuses as to why you can't!"

# Kari Wunderlin

2011 GRADUATE, SUPERVISORY MANAGEMENT, CORPORATE DONOR



# MAY 2015

NATIONAL BIKE MONTH    NATIONAL HEALTH AWARENESS MONTH    ARTHRITIS AWARENESS MONTH

SUNDAY	MONDAY	TUESDAY	WEDNESDAY	THURSDAY	FRIDAY	SATURDAY																																																																																				
		<p>APRIL 2015</p> <table border="1"> <tr><td>S</td><td>M</td><td>T</td><td>W</td><td>T</td><td>F</td><td>S</td></tr> <tr><td></td><td></td><td>1</td><td>2</td><td>3</td><td>4</td><td></td></tr> <tr><td>5</td><td>6</td><td>7</td><td>8</td><td>9</td><td>10</td><td>11</td></tr> <tr><td>12</td><td>13</td><td>14</td><td>15</td><td>16</td><td>17</td><td>18</td></tr> <tr><td>19</td><td>20</td><td>21</td><td>22</td><td>23</td><td>24</td><td>25</td></tr> <tr><td>26</td><td>27</td><td>28</td><td>29</td><td>30</td><td></td><td></td></tr> </table>	S	M	T	W	T	F	S			1	2	3	4		5	6	7	8	9	10	11	12	13	14	15	16	17	18	19	20	21	22	23	24	25	26	27	28	29	30			<p>JUNE 2015</p> <table border="1"> <tr><td>S</td><td>M</td><td>T</td><td>W</td><td>T</td><td>F</td><td>S</td></tr> <tr><td>1</td><td>2</td><td>3</td><td>4</td><td>5</td><td>6</td><td></td></tr> <tr><td>7</td><td>8</td><td>9</td><td>10</td><td>11</td><td>12</td><td>13</td></tr> <tr><td>14</td><td>15</td><td>16</td><td>17</td><td>18</td><td>19</td><td>20</td></tr> <tr><td>21</td><td>22</td><td>23</td><td>24</td><td>25</td><td>26</td><td>27</td></tr> <tr><td>28</td><td>29</td><td>30</td><td></td><td></td><td></td><td></td></tr> </table>	S	M	T	W	T	F	S	1	2	3	4	5	6		7	8	9	10	11	12	13	14	15	16	17	18	19	20	21	22	23	24	25	26	27	28	29	30						1	2
S	M	T	W	T	F	S																																																																																				
		1	2	3	4																																																																																					
5	6	7	8	9	10	11																																																																																				
12	13	14	15	16	17	18																																																																																				
19	20	21	22	23	24	25																																																																																				
26	27	28	29	30																																																																																						
S	M	T	W	T	F	S																																																																																				
1	2	3	4	5	6																																																																																					
7	8	9	10	11	12	13																																																																																				
14	15	16	17	18	19	20																																																																																				
21	22	23	24	25	26	27																																																																																				
28	29	30																																																																																								
3	4	5	6	7	8	9																																																																																				
		National Teacher Day Cinco de Mayo	National Nurse's Day	Southwest Tech All School Picnic																																																																																						
10	11	12	13	14	15	16																																																																																				
Mother's Day					Southwest Tech Spring Term Ends	Southwest Tech Graduation Day Armed Forces Day																																																																																				
17	18	19	20	21	22	23																																																																																				
National EMS Week, May 17-23																																																																																										
24	25	26	27	28	29	30																																																																																				
31	Memorial Day Southwest Tech Closed																																																																																									



*"The best thing about Southwest Tech is the hands-on learning."*

Justin Tibbits grew up on a dairy/beef farm consisting of 70 dairy cows and around 250 beef cows that was run by his father and uncle. Justin knew he wanted to stay active in the agricultural industry and learn hands-on skills that he could take back to the farm, so he enrolled in the Dairy Herd Management program to broaden his knowledge of the dairy industry. "The small class sizes made it possible to work with the instructor personally, yet hear other students' views and input," stated Justin. "The instructor was the best teacher I'd ever experienced in all of my years of education. He related daily lessons to real life." Justin believes the Dairy Herd Management program helped broaden his vision, not only in the dairy industry, but also in all production agriculture. "It showed me the opportunities and future I had in marketing livestock and running a successful business," said Justin.

Justin Tibbits

2006 GRADUATE, DAIRY HERD MANAGEMENT



# JUNE 2015

NATIONAL SAFETY MONTH MEN'S HEALTH MONTH

SUNDAY	MONDAY	TUESDAY	WEDNESDAY	THURSDAY	FRIDAY	SATURDAY																																																	
<p>MAY 2015</p> <table border="1"> <tr> <td>S</td><td>M</td><td>T</td><td>W</td><td>T</td><td>F</td><td>S</td> </tr> <tr> <td></td><td></td><td></td><td></td><td></td><td>1</td><td>2</td> </tr> <tr> <td>3</td><td>4</td><td>5</td><td>6</td><td>7</td><td>8</td><td>9</td> </tr> <tr> <td>10</td><td>11</td><td>12</td><td>13</td><td>14</td><td>15</td><td>16</td> </tr> <tr> <td>17</td><td>18</td><td>19</td><td>20</td><td>21</td><td>22</td><td>23</td> </tr> <tr> <td>24</td><td>25</td><td>26</td><td>27</td><td>28</td><td>29</td><td>30</td> </tr> <tr> <td>31</td><td></td><td></td><td></td><td></td><td></td><td></td> </tr> </table>	S	M	T	W	T	F	S						1	2	3	4	5	6	7	8	9	10	11	12	13	14	15	16	17	18	19	20	21	22	23	24	25	26	27	28	29	30	31							1	2	3	4	5	6
S	M	T	W	T	F	S																																																	
					1	2																																																	
3	4	5	6	7	8	9																																																	
10	11	12	13	14	15	16																																																	
17	18	19	20	21	22	23																																																	
24	25	26	27	28	29	30																																																	
31																																																							
7	8 Southwest Tech Summer Term Begins	9	10	11	12 Southwest Tech Summer Hours Campus Closed	13																																																	
14 Flag Day	15	16	17	18	19 Southwest Tech Summer Hours Campus Closed	20																																																	
21 Father's Day Summer Begins	22	23	24	25	26 Southwest Tech Summer Hours Campus Closed	27																																																	
28	29	30	<p>JULY 2015</p> <table border="1"> <tr> <td>S</td><td>M</td><td>T</td><td>W</td><td>T</td><td>F</td><td>S</td> </tr> <tr> <td></td><td></td><td></td><td>1</td><td>2</td><td>3</td><td>4</td> </tr> <tr> <td>5</td><td>6</td><td>7</td><td>8</td><td>9</td><td>10</td><td>11</td> </tr> <tr> <td>12</td><td>13</td><td>14</td><td>15</td><td>16</td><td>17</td><td>18</td> </tr> <tr> <td>19</td><td>20</td><td>21</td><td>22</td><td>23</td><td>24</td><td>25</td> </tr> <tr> <td>26</td><td>27</td><td>28</td><td>29</td><td>30</td><td>31</td><td></td> </tr> </table>	S	M	T	W	T	F	S				1	2	3	4	5	6	7	8	9	10	11	12	13	14	15	16	17	18	19	20	21	22	23	24	25	26	27	28	29	30	31		 <small>DESIGN. ENGINEER. MANUFACTURE.</small> 									
S	M	T	W	T	F	S																																																	
			1	2	3	4																																																	
5	6	7	8	9	10	11																																																	
12	13	14	15	16	17	18																																																	
19	20	21	22	23	24	25																																																	
26	27	28	29	30	31																																																		



*"Attending Southwest Tech not only changed my life, but is forever changing the lives of the people I manage in the restaurant industry."*

Stephanie Robey's career did not begin the way she imagined it would. At the time, her mother could tell her heart was not in her work and encouraged her to go to school for something she enjoyed. Stephanie saw that Southwest Tech had a culinary program, and it immediately caught her eye. "I enjoyed cooking, but I truly found my passion for culinary management through the guidance of Culinary Instructor Jeff Dombeck." After graduation, Stephanie was employed by CHAMPPS, in Dubuque, IA. She was promoted quickly to Front of the House Manager and has been with the company for just over three years. "At CHAMPPS we focus on energetic teamwork, top of the line customer service, and made from scratch food," Stephanie declared. "I love coming to work and getting to practice the same skills I learned during my culinary training at Southwest Tech."

## Stephanie Robey

2011 GRADUATE, CULINARY MANAGEMENT/CULINARY PROGRAM ADVISORY BOARD MEMBER



# JULY 2015

NATIONAL PARKS MONTH      JUVENILE ARTHRITIS AWARENESS MONTH

SUNDAY	MONDAY	TUESDAY	WEDNESDAY	THURSDAY	FRIDAY	SATURDAY
	JUNE 2015 S M T W T F S 1 2 3 4 5 6 7 8 9 10 11 12 13 14 15 16 17 18 19 20 21 22 23 24 25 26 27 28 29 30	AUGUST 2015 S M T W T F S 1 2 3 4 5 6 7 8 9 10 11 12 13 14 15 16 17 18 19 20 21 22 23 24 25 26 27 28 29 30 31	1	2	3	4
					Southwest Tech Summer Hours Campus Closed	Independence Day
5	6	7	8	9	10	11
					Southwest Tech Summer Hours Campus Closed	
12	13	14	15	16	17	18
					Southwest Tech Summer Hours Campus Closed	
19	20	21	22	23	24	25
					Southwest Tech Summer Hours Campus Closed	
26	27	28	29	30	31	
					Southwest Tech Summer Hours Campus Closed	



*"As a retired educator, I realize the educational value students receive at Southwest Tech and how it impacts their future."*

J. Bruce Bradley has been involved with education for more than 50 years, beginning as a math teacher before moving on to school administration and supervision. While serving as the superintendent of the Iowa-Grant School District, Bruce began serving on the Southwest Tech District Board. He continued in that capacity for 21 years, including serving as the Board President for two 2-year terms. Upon retiring from the board, Bruce continued his service to the College by serving on the Southwest Tech Foundation Board. When asked why he continues to serve Bruce stated, "I stay involved because I feel that Southwest Tech provides the area with well-trained employees who will become the leaders of the future."

J. Bruce Bradley

FOUNDATION BOARD MEMBER



# AUGUST 2015

NATIONAL IMMUNIZATION AWARENESS MONTH

SUNDAY	MONDAY	TUESDAY	WEDNESDAY	THURSDAY	FRIDAY	SATURDAY																																																																																					
				<p>JULY 2015</p> <table border="1"> <tr><td>S</td><td>M</td><td>T</td><td>W</td><td>T</td><td>F</td><td>S</td></tr> <tr><td></td><td></td><td>1</td><td>2</td><td>3</td><td>4</td><td></td></tr> <tr><td>5</td><td>6</td><td>7</td><td>8</td><td>9</td><td>10</td><td>11</td></tr> <tr><td>12</td><td>13</td><td>14</td><td>15</td><td>16</td><td>17</td><td>18</td></tr> <tr><td>19</td><td>20</td><td>21</td><td>22</td><td>23</td><td>24</td><td>25</td></tr> <tr><td>26</td><td>27</td><td>28</td><td>29</td><td>30</td><td>31</td><td></td></tr> </table>	S	M	T	W	T	F	S			1	2	3	4		5	6	7	8	9	10	11	12	13	14	15	16	17	18	19	20	21	22	23	24	25	26	27	28	29	30	31		<p>SEPTEMBER 2015</p> <table border="1"> <tr><td>S</td><td>M</td><td>T</td><td>W</td><td>T</td><td>F</td><td>S</td></tr> <tr><td></td><td></td><td>1</td><td>2</td><td>3</td><td>4</td><td>5</td></tr> <tr><td>6</td><td>7</td><td>8</td><td>9</td><td>10</td><td>11</td><td>12</td></tr> <tr><td>13</td><td>14</td><td>15</td><td>16</td><td>17</td><td>18</td><td>19</td></tr> <tr><td>20</td><td>21</td><td>22</td><td>23</td><td>24</td><td>25</td><td>26</td></tr> <tr><td>27</td><td>28</td><td>29</td><td>30</td><td></td><td></td><td></td></tr> </table>	S	M	T	W	T	F	S			1	2	3	4	5	6	7	8	9	10	11	12	13	14	15	16	17	18	19	20	21	22	23	24	25	26	27	28	29	30					1
S	M	T	W	T	F	S																																																																																					
		1	2	3	4																																																																																						
5	6	7	8	9	10	11																																																																																					
12	13	14	15	16	17	18																																																																																					
19	20	21	22	23	24	25																																																																																					
26	27	28	29	30	31																																																																																						
S	M	T	W	T	F	S																																																																																					
		1	2	3	4	5																																																																																					
6	7	8	9	10	11	12																																																																																					
13	14	15	16	17	18	19																																																																																					
20	21	22	23	24	25	26																																																																																					
27	28	29	30																																																																																								
2	3	4	5	6	7	8																																																																																					
9	10	11	12	13	14	15																																																																																					
16	17	18	19	20	21	22																																																																																					
			<p>Staff In-Service Southwest Tech Open to Public</p>																																																																																								
23	24 Southwest Tech Fall Term Begins	25	26	27	28	29																																																																																					
30	31 Wisconsin Farm Technology Days, Dane County																																																																																										



*"The variety of educational opportunities offered at Southwest Tech greatly enhances the economic development of our region."*

Eileen Nickels has been an advocate for access to quality education and training for many years. As a locally elected official and member of many Platteville area committees, Eileen has been active on the Southwest Tech District Board since 2006. Eileen has seen how Southwest Tech touches the lives of people in our region every day. "Southwest Tech graduates work in our hospitals, dentist offices, fix our vehicles, run local businesses, and so much more!" stated Eileen who is especially proud of the role Southwest Tech plays in annually training thousands of public safety employees and volunteers in Southwest Wisconsin. "Public safety is an issue for everyone living in Southwest Wisconsin. The College plays a vital role in providing our firefighters, emergency medical technicians, and police officers with the quality education and training they need to help keep us safe."

Eileen Nickels

DISTRICT BOARD AND FOUNDATION BOARD MEMBER



# SEPTEMBER 2015

LEUKEMIA AND LYMPHOMA AWARENESS MONTH NATIONAL SCHOOL SUCCESS MONTH

SUNDAY	MONDAY	TUESDAY	WEDNESDAY	THURSDAY	FRIDAY	SATURDAY																																																																																																		
		1	2	3	4	5																																																																																																		
																																																																																																								
6	7 Labor Day Southwest Tech Closed	8	9	10	11 Patriot Day	12																																																																																																		
13 Grandparents Day	14	15	16	17 Constitution Day Citizenship Day	18	19																																																																																																		
20	21	22	23 Fall Begins	24	25	26																																																																																																		
27	28	29 World Dairy Expo Alliant Energy Center, Madison	30	<p>AUGUST 2015</p> <table border="1"> <tr><td>S</td><td>M</td><td>T</td><td>W</td><td>T</td><td>F</td><td>S</td></tr> <tr><td></td><td></td><td></td><td></td><td></td><td></td><td>1</td></tr> <tr><td>2</td><td>3</td><td>4</td><td>5</td><td>6</td><td>7</td><td>8</td></tr> <tr><td>9</td><td>10</td><td>11</td><td>12</td><td>13</td><td>14</td><td>15</td></tr> <tr><td>16</td><td>17</td><td>18</td><td>19</td><td>20</td><td>21</td><td>22</td></tr> <tr><td>23</td><td>24</td><td>25</td><td>26</td><td>27</td><td>28</td><td>29</td></tr> <tr><td>30</td><td>31</td><td></td><td></td><td></td><td></td><td></td></tr> </table> <p>OCTOBER 2015</p> <table border="1"> <tr><td>S</td><td>M</td><td>T</td><td>W</td><td>T</td><td>F</td><td>S</td></tr> <tr><td></td><td></td><td></td><td></td><td></td><td>1</td><td>2</td></tr> <tr><td>3</td><td>4</td><td>5</td><td>6</td><td>7</td><td>8</td><td>9</td></tr> <tr><td>10</td><td>11</td><td>12</td><td>13</td><td>14</td><td>15</td><td>16</td></tr> <tr><td>17</td><td>18</td><td>19</td><td>20</td><td>21</td><td>22</td><td>23</td></tr> <tr><td>24</td><td>25</td><td>26</td><td>27</td><td>28</td><td>29</td><td>30</td></tr> <tr><td>31</td><td></td><td></td><td></td><td></td><td></td><td></td></tr> </table>		S	M	T	W	T	F	S							1	2	3	4	5	6	7	8	9	10	11	12	13	14	15	16	17	18	19	20	21	22	23	24	25	26	27	28	29	30	31						S	M	T	W	T	F	S						1	2	3	4	5	6	7	8	9	10	11	12	13	14	15	16	17	18	19	20	21	22	23	24	25	26	27	28	29	30	31							
S	M	T	W	T	F	S																																																																																																		
						1																																																																																																		
2	3	4	5	6	7	8																																																																																																		
9	10	11	12	13	14	15																																																																																																		
16	17	18	19	20	21	22																																																																																																		
23	24	25	26	27	28	29																																																																																																		
30	31																																																																																																							
S	M	T	W	T	F	S																																																																																																		
					1	2																																																																																																		
3	4	5	6	7	8	9																																																																																																		
10	11	12	13	14	15	16																																																																																																		
17	18	19	20	21	22	23																																																																																																		
24	25	26	27	28	29	30																																																																																																		
31																																																																																																								



*"Southwest Tech is industry, technology, and student-focused."*

Cory Raisbeck started his first business when he was sixteen years old. "I was always entrepreneurial, so when I started looking at my post-secondary education options, I wanted to join a fast growing field. I also knew that with a good understanding of technology, I could do a lot of things," Cory said. He enrolled in the Network Communication Specialist program at Southwest Tech and found it fit with his hands-on learning style. Past work experience made Cory realize he could leverage the fields of information technology and manufacturing to better serve businesses. Cory now co-owns BoxLogix Automation, a company that designs material handling systems to increase logistic productivity and reduce overall operating costs for businesses. Cory proudly explains the business name as, "We design material handling systems to efficiently deliver boxes to logical places!" To share his knowledge and experience, Cory also serves as an advisory board member for the Network Communication Specialist program and a mock interview volunteer for the Career Center.

# Cory Raisbeck

2002 GRADUATE, IT-NETWORK COMMUNICATION SPECIALIST, ADVISORY BOARD MEMBER



# OCTOBER 2015

NATIONAL PHYSICAL THERAPY MONTH

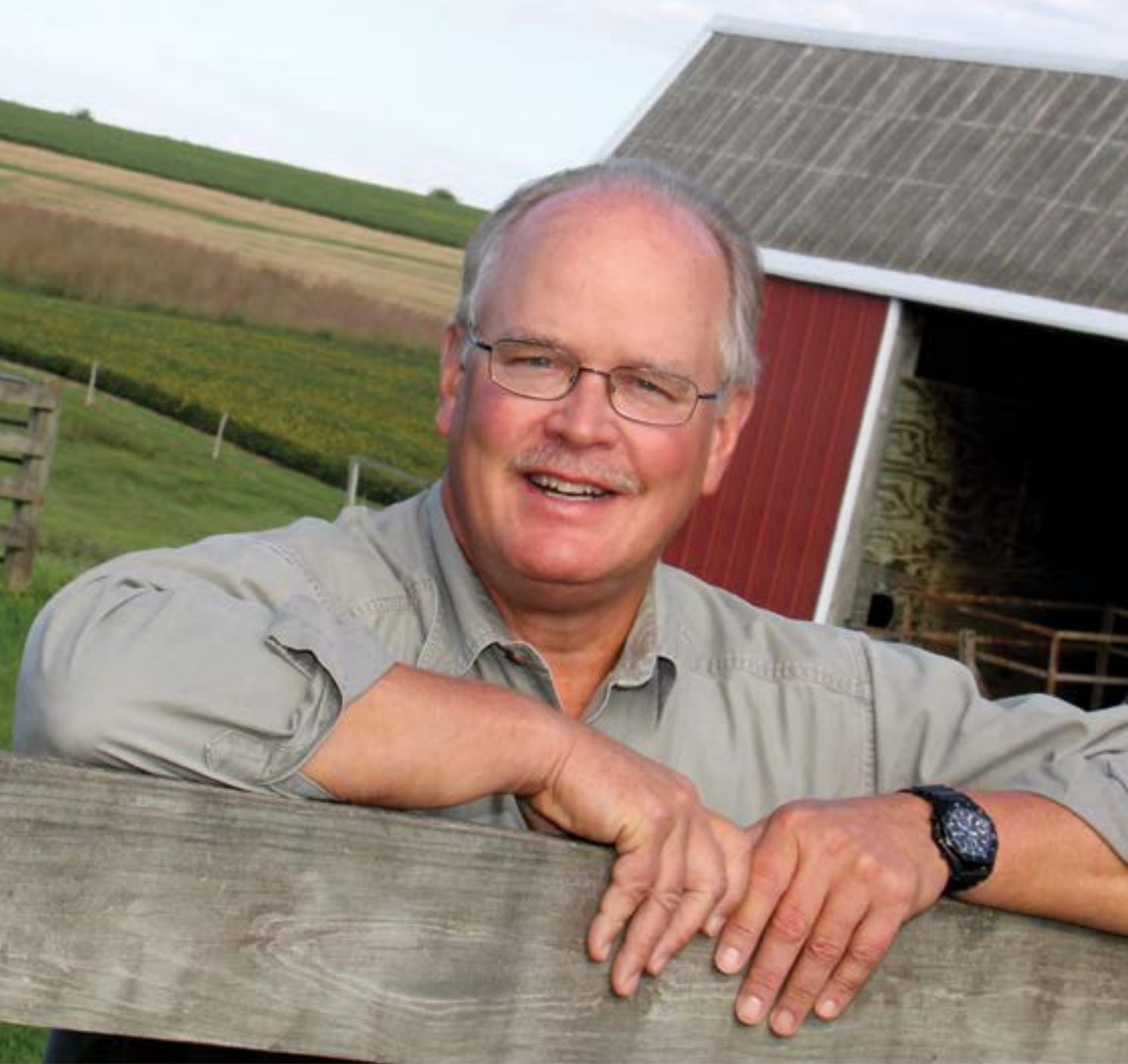
MANUFACTURING MONTH

BREAST CANCER AWARENESS MONTH

DOMESTIC VIOLENCE AWARENESS MONTH

NATIONAL CYBER SECURITY MONTH

SUNDAY	MONDAY	TUESDAY	WEDNESDAY	THURSDAY	FRIDAY	SATURDAY																																																																																				
 <p><b>JIM'S</b> BUILDING CENTER JIM'S BUILDING CENTER, INC.</p>	 <p>Southwest Tech</p>	<p>SEPTEMBER 2015</p> <table border="1"> <tr><td>S</td><td>M</td><td>T</td><td>W</td><td>T</td><td>F</td><td>S</td></tr> <tr><td></td><td>1</td><td>2</td><td>3</td><td>4</td><td>5</td><td></td></tr> <tr><td>6</td><td>7</td><td>8</td><td>9</td><td>10</td><td>11</td><td>12</td></tr> <tr><td>13</td><td>14</td><td>15</td><td>16</td><td>17</td><td>18</td><td>19</td></tr> <tr><td>20</td><td>21</td><td>22</td><td>23</td><td>24</td><td>25</td><td>26</td></tr> <tr><td>27</td><td>28</td><td>29</td><td>30</td><td></td><td></td><td></td></tr> </table>	S	M	T	W	T	F	S		1	2	3	4	5		6	7	8	9	10	11	12	13	14	15	16	17	18	19	20	21	22	23	24	25	26	27	28	29	30				<p>NOVEMBER 2015</p> <table border="1"> <tr><td>S</td><td>M</td><td>T</td><td>W</td><td>T</td><td>F</td><td>S</td></tr> <tr><td>1</td><td>2</td><td>3</td><td>4</td><td>5</td><td>6</td><td>7</td></tr> <tr><td>8</td><td>9</td><td>10</td><td>11</td><td>12</td><td>13</td><td>14</td></tr> <tr><td>15</td><td>16</td><td>17</td><td>18</td><td>19</td><td>20</td><td>21</td></tr> <tr><td>22</td><td>23</td><td>24</td><td>25</td><td>26</td><td>27</td><td>28</td></tr> <tr><td>29</td><td>30</td><td></td><td></td><td></td><td></td><td></td></tr> </table>	S	M	T	W	T	F	S	1	2	3	4	5	6	7	8	9	10	11	12	13	14	15	16	17	18	19	20	21	22	23	24	25	26	27	28	29	30						1	2	3
S	M	T	W	T	F	S																																																																																				
	1	2	3	4	5																																																																																					
6	7	8	9	10	11	12																																																																																				
13	14	15	16	17	18	19																																																																																				
20	21	22	23	24	25	26																																																																																				
27	28	29	30																																																																																							
S	M	T	W	T	F	S																																																																																				
1	2	3	4	5	6	7																																																																																				
8	9	10	11	12	13	14																																																																																				
15	16	17	18	19	20	21																																																																																				
22	23	24	25	26	27	28																																																																																				
29	30																																																																																									
4	5	6	7	8	9	10																																																																																				
11	12 Columbus Day	13	14 Southwest Tech Open House No Classes	15	16 Boss's Day	17 Sweetest Day																																																																																				
18	19	20	21	22	23	24																																																																																				
25	26	27	28	29	30	31 Halloween																																																																																				



*"As Senator I had a keen interest in education and the Wisconsin Technical College System."*

During his 33 years as a Representative of the people, Senator Dale Schultz earned a reputation as a consensus builder who could reach across party lines to get results. He has been recognized for his work on agriculture, insurance, and environmental issues. Dale has been an advocate and supporter of the Wisconsin Technical College System and could be seen on Southwest Tech's campus taking real estate certification classes for his business. Dale and his wife, Rachel, own and manage their family's farm in Hill Point, which became a Wisconsin Century Farm in 1998. As the long time chair of the Senate Agriculture Committee, his energy and enthusiasm for the land and its stewardship can be seen all over his property. An avid gardener, Dale continually tries new and innovative ways to grow fruits and vegetables for his family and friends. He also plants warm weather grasses to create a friendly habitat for pheasants on his farm's game preserve that is often used for local pheasant hunts and skeet shoots. Dale stated with a smile, "I have loved farming my whole life. It's what I have always wanted to do."

# Dale Schultz

RETIRED SENATOR-DISTRICT 17, REAL ESTATE CONTINUING EDUCATION STUDENT



# NOVEMBER 2015

AMERICAN DIABETES MONTH      LUNG CANCER AWARENESS MONTH

SUNDAY	MONDAY	TUESDAY	WEDNESDAY	THURSDAY	FRIDAY	SATURDAY																																																																																					
1  Daylight Savings Time Ends	2	3  Election Day	4	5	6	7																																																																																					
8	9	10	11  Veterans Day	12	13	14																																																																																					
15	16  Global Entrepreneurship Week November 16–22	17	18	19	20	21																																																																																					
22	23	24	25	26  Thanksgiving Southwest Tech Closed	27  Southwest Tech Closed	28																																																																																					
29	30	<p>OCTOBER 2015</p> <table border="1"> <tr><td>S</td><td>M</td><td>T</td><td>W</td><td>T</td><td>F</td><td>S</td></tr> <tr><td></td><td></td><td></td><td></td><td>1</td><td>2</td><td>3</td></tr> <tr><td>4</td><td>5</td><td>6</td><td>7</td><td>8</td><td>9</td><td>10</td></tr> <tr><td>11</td><td>12</td><td>13</td><td>14</td><td>15</td><td>16</td><td>17</td></tr> <tr><td>18</td><td>19</td><td>20</td><td>21</td><td>22</td><td>23</td><td>24</td></tr> <tr><td>25</td><td>26</td><td>27</td><td>28</td><td>29</td><td>30</td><td>31</td></tr> </table>		S	M	T	W	T	F	S					1	2	3	4	5	6	7	8	9	10	11	12	13	14	15	16	17	18	19	20	21	22	23	24	25	26	27	28	29	30	31	<p>DECEMBER 2015</p> <table border="1"> <tr><td>S</td><td>M</td><td>T</td><td>W</td><td>T</td><td>F</td><td>S</td></tr> <tr><td></td><td></td><td>1</td><td>2</td><td>3</td><td>4</td><td>5</td></tr> <tr><td>6</td><td>7</td><td>8</td><td>9</td><td>10</td><td>11</td><td>12</td></tr> <tr><td>13</td><td>14</td><td>15</td><td>16</td><td>17</td><td>18</td><td>19</td></tr> <tr><td>20</td><td>21</td><td>22</td><td>23</td><td>24</td><td>25</td><td>26</td></tr> <tr><td>27</td><td>28</td><td>29</td><td>30</td><td>31</td><td></td><td></td></tr> </table>		S	M	T	W	T	F	S			1	2	3	4	5	6	7	8	9	10	11	12	13	14	15	16	17	18	19	20	21	22	23	24	25	26	27	28	29	30	31				
S	M	T	W	T	F	S																																																																																					
				1	2	3																																																																																					
4	5	6	7	8	9	10																																																																																					
11	12	13	14	15	16	17																																																																																					
18	19	20	21	22	23	24																																																																																					
25	26	27	28	29	30	31																																																																																					
S	M	T	W	T	F	S																																																																																					
		1	2	3	4	5																																																																																					
6	7	8	9	10	11	12																																																																																					
13	14	15	16	17	18	19																																																																																					
20	21	22	23	24	25	26																																																																																					
27	28	29	30	31																																																																																							



*"My degree was the best investment with the greatest return I have ever made."*

After high school, Greg Geiselman completed a bachelor's degree in Human Physiology in hopes of becoming a Physical Therapist. Greg was detoured from that dream when he pursued a successful career in business. However, after the economic downturn in 2008, Greg was feeling as though he was missing something. Hearing that Southwest Tech had a Physical Therapist Assistant (PTA) program starting in 2011, Greg took the opportunity to pursue his passion of helping people by enrolling at Southwest Tech. Greg embraced and learned as much as he could and graduated from the first class of the Physical Therapist Assistant program. "I never regretted my decision to go back to school," declared Greg. Working for the Upland Hills Health "Therapy Team" in Spring Green, Greg can proudly say, "I love my job. Every day when I drive home, I know I have helped at least one person. It's a great feeling!"

Greg Geiselman

2013 GRADUATE, PHYSICAL THERAPIST ASSISTANT



# DECEMBER 2015

UNIVERSAL HUMAN RIGHTS MONTH

SUNDAY	MONDAY	TUESDAY	WEDNESDAY	THURSDAY	FRIDAY	SATURDAY
	NOVEMBER 2015 S M T W T F S 1 2 3 4 5 6 7 8 9 10 11 12 13 14 15 16 17 18 19 20 21 22 23 24 25 26 27 28 29 30	1	2	3	4	5
6	7  Pearl Harbor Remembrance Day	8	9	10	11	12
13	14	15	16	17	18	19  Southwest Tech Winter Graduation Day
20	21	22  Winter Begins	23	24  Christmas Eve Southwest Tech Closed	25  Christmas Day Southwest Tech Closed	26
27	28	29	30	31  New Year's Eve	JANUARY 2016 S M T W T F S 1 2 3 4 5 6 7 8 9 10 11 12 13 14 15 16 17 18 19 20 21 22 23 24 25 26 27 28 29 30 31	
Southwest Tech Winter Break—Campus Closed						

# Southwest Tech Foundation 2013–2014 Annual Report



**Becky Fernette**  
Southwest Tech  
Foundation Board  
President

## Greetings,

If I were asked to pick a theme to represent Board activity this past year, it would be “continuous change in a positive direction.” Although a few dedicated members left the Board, we have welcomed both familiar and new faces to serve on behalf of the Foundation. The Foundation implemented new financial software that integrated with the donor database in an effort to improve the accuracy of our records and the

management of donations. To complement the renovations in Student Services, the Foundation has updated our donor wall. Located in the College Connection, at the main entrance on campus, the update included more levels of recognition to showcase our most generous donors. To thank our supporters in person, the Foundation now hosts an annual Donor Appreciation evening. Donors who attend this event enjoy tasty appetizers and beverages prepared by Culinary Program students. In addition, we have partnered with the Building Trades and Construction Program to build additional student housing.

The Foundation continues to financially support and expand its scholarship offerings, which have grown to become the second largest student-support program on campus. Thanks to the generosity of donors last year, we increased the value of our scholarship distribution by 30 percent. We also streamlined the scholarship application process making it completely online. Students are encouraged to submit their applications early in the semester to avoid missing the application deadline.

Last spring, we were delighted to receive an unexpected and generous planned gift. Furthermore, the Foundation has hosted several presentations on estate planning. Although it’s a topic that most people avoid, it’s important to document how you want your assets to be allocated when you are no longer able to make those decisions. By including Southwest Tech in your estate planning, you become a member of the President’s

Visionary Circle, which recognizes donors who are committed to leaving a legacy with the Southwest Tech Foundation. All Visionary Circle members are listed in this annual calendar and on the donor wall.

To everyone who gives to the Southwest Tech Foundation, whether it’s canned goods for the Food Pantry, a present for a student’s child during the holidays, a monthly payroll deduction, a memorial scholarship to honor a loved one, or the gift of your time; the students and their families, the staff, Board members and the many friends of Southwest Tech appreciate your generosity. Thank you.

Sincerely,  
**Becky Fernette**  
Foundation Board President

## Foundation Staff



(L to R) Duane M. Ford, Foundation Director; Heather Fifrick, Resident & Student Life Manager; Samantha Goss, Foundation Assistant; and Betsy Ralph-Tollefson, Director of Development.

## Foundation Volunteer Board of Directors



**Becky Fernette**  
President



**Kevin Raisbeck**  
Vice President



**Josh Wiederholt**  
Secretary-Treasurer



**Lori Barry**



**J. Bruce Bradley**



**Jerry Brunner**



**Joyce Czajkowski**



**Tammie Engelke**



**Connie Larson**



**Eileen Nickels**



**Carol Rogers**



**Tony Schwab**



**Tom Sheehan**



**Ben Wood**



**Nick Nice**  
Emeritus Member



**Melissa Gile**  
Student Representative



## Welcome to the newest members of the Southwest Tech Foundation Board



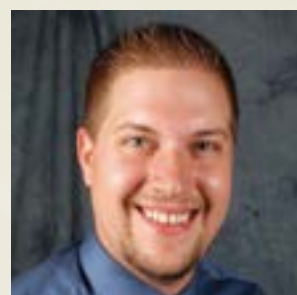
*Joyce Czajkowski, Wauzeka*



*Melissa Gile, Darlington  
Student Representative*



*Josh Wiederholt, Fennimore*



*Ben Wood, Fennimore*

## Samantha Goss Joins Foundation Staff



Samantha Goss of Fennimore joined the Foundation in March of 2014 with a passion for non-profit fundraising and education.

Raised in Urbana, IA, Samantha came to Southwest Wisconsin to attend UW-Platteville and earned a Bachelor's degree in Communication Technology and Public

Relations. Since moving to Wisconsin she has noticed the sense of pride in the area and has chosen to build her life here. She has worked for area employers and built connections with the Fennimore community through her involvement in the Taste of Fennimore, Ladies on the Move, Fennimore Chamber and the Fennimore Pool Committee. Samantha and her husband, Stephen, have one child named Logan. She is excited about becoming a member of the Foundation team and has been a valuable addition to moving the Foundation forward and continuing to serve the students of Southwest Tech.



Every day Southwest Tech students and alumni make an impact in the communities in which they live and work. Businesses flourish because of the educated and trained workforce that Southwest Tech produces.

The Southwest Tech Foundation's annual fund drive, "Every Day is a Day for Southwest Tech Students" brings attention to the importance of investing in our local workforce by supporting scholarships and programs at Southwest Tech. The Southwest Tech Foundation staff meets throughout the year with businesses and organizations to discuss our region's workforce needs, how the college serves the community, and explores partnership opportunities.

"80% of our student body requires some kind of additional financial assistance to pursue technical education and training. With over 70% of our graduates living and working in Grant, Iowa, Lafayette, Richland, or Crawford County upon graduation, businesses can be assured their contributions are truly going to support our friends and neighbors that go to school and work in our communities," Betsy Tollefson, the Southwest Tech Foundation's Director of Development, said.

Serving the needs of Southwest Tech's students is the Foundation's top priority.

This year 214 students received over \$133,000 in scholarship awards. That was a 30% increase in support from last year and all because of the generous support of the businesses and organizations in Southwest Wisconsin.

Thank you to our annual fund lead donors, First Merit Bank Foundation, Rayovac, Rockwell Automation, Queen B Media, and Lamar Outdoors!



"Every day is A Day for Southwest Tech Students"! In 2015, business and organization visits will start in June and continue throughout the course of the summer! Contact the Southwest Tech Foundation, 608-822-2379, for more information regarding your opportunity to support a Southwest Tech student!

## Todd Patrick Scott Scholarship

Southwest Tech Foundation is proud to announce the establishment of The Todd Patrick Scott “Big Bertha” Scholarship. Scott, a Southwest Tech student from Waterville, IA, was enrolled in the Golf Course Management program when he unexpectedly passed away in spring of 2013.

In celebration of Todd Patrick Scott’s life and his passion for golf, two \$500 scholarships will be given to full-time students enrolled in the Golf Course Management program at Southwest Tech. Scott’s sister, Tiffany Anderson, organized the Todd Patrick Scott Memorial Golf Outing on July 19, 2014, to raise funds for the scholarships. The event was a huge success and the Foundation invites everyone to participate in The Todd Patrick Scott Scholarship 2nd Annual Golf Benefit on July 18, 2015, at Tri-City Golf Club in Luana, Iowa.



*Pictured: (L to R): Betsy Tollefson, Southwest Tech Foundation Director of Development; Tiffany Anderson of Monona, IA; Scott Kennedy, Southwest Tech Golf Course Management Instructor*

## Lincoln Trust Impacts Southwest Wisconsin

Pearl and Grace Lincoln were philanthropists and community advocates living in Richland Center in the late 1800’s and early 1900’s. Pearl served as District Attorney, Mayor, County Judge, and helped found the County Children’s Board and local Kiwanis Club. Grace worked with the local Women’s Club, an organization that supported civic improvements like the city swimming pool, a Carnegie Library, the Richland Hospital, and the City Auditorium. Their vision and practice of investing in their community was ingrained in their son, Garrison Lincoln.

A high-school teacher for his entire career, Garrison left a legacy to support education to enhance the future of Richland County residents. The Garrison Lincoln Trust was established in 2000 to support Richland County and its residents. Administered by his nephew, James Himel, the Garrison Lincoln Trust was founded on the belief that investing in education is investing in the future.

“It is not just about giving scholarships, though that feels great,” Trust Administrator James Himel said. “It is about fueling economic development in the region. The benefit is so much more than simply seeing a student graduate. It is having another person educated and trained with a skill to share with the rest of the community.”

Over the past 14 years, the Garrison Lincoln Trust has granted scholarships to 347 students from Richland High School, UW-Richland, and Southwest Tech valuing over \$389,000. The tremendous impact of this legacy gift

has been seen for many years and the commitment to promoting education through scholarship opportunities will continue to be the focus. The Southwest Tech Foundation is honored to be one of the institutions to receive this amazing gift and look forward to positively impacting students of Southwest Wisconsin for many years to come.



*Pictured above is the first recipients of Garrison Lincoln Trust scholarship.*

### SCHOLARSHIP AWARDS

School Year	No. of Scholarships	Range of Awards	Total Scholarships
2003-04	141	\$250 — \$2,000	\$83,600
2004-05	155	\$250 — \$1,000	\$91,800
2005-06	188	\$250 — \$1,500	\$107,800
2006-07	214	\$250 — \$2,000	\$120,900
2007-08	203	\$250 — \$3,000	\$115,400
2008-09	161	\$250 — \$1,500	\$89,200
2009-10	150	\$250 — \$2,250	\$80,625
2010-11	173	\$250 — \$1,000	\$85,050
2011-12	188	\$250 — \$2,000	\$96,000
2012-13	189	\$250 — \$2,000	\$102,250
2013-14	214	\$250 — \$2,000	\$133,000

### Foundation Mission

**Promote learning through funding and activities that enable Southwest Tech to provide opportunities for success.**

### Foundation Vision

**To be the Foundation sought out for investment to allow Southwest Tech to deliver the highest quality technical education.**



**Tom and Renée Sigwarth Family  
Establish Sigwarth Family, Country  
Kitchen, and Dairy Queen Endowment  
to Benefit Southwest Tech Students**

The Southwest Tech Foundation is proud to announce the establishment of the Sigwarth Family, Country Kitchen, and Dairy Queen Endowment Scholarship to benefit Southwest Tech students enrolled in the Graphic



& Web Design and Culinary Programs at Southwest Tech.

“On behalf of our volunteer board of directors, staff, and most importantly Southwest Tech students, I would like to thank the Sigwarth family, Platteville Country Kitchen

and Platteville Dairy Queen,” Betsy Tollefson, Southwest Tech Foundation Director of Development said. “By investing in Southwest Wisconsin’s future workforce,” Tollefson said. The Sigwarth Family, Platteville Country Kitchen and Platteville Dairy Queen are leading supporters of technical education. Their contribution establishes an endowment supporting Southwest Tech students for generations to come.

**Donors Invited to an Evening of Appreciation**

Each year the Southwest Tech Foundation holds a Donor Reception to recognize the generosity of alumni, faculty, staff, retirees, businesses and friends of Southwest Tech. Support from donors comes in many different forms. Whether they are supporting tuition, scholarships, programs or events, their contributions make an everlasting impact in the lives of students at Southwest Tech.

On November 4, 2014, the Southwest Tech Foundation welcomed guests to mingle and enjoy hors d’oeuvres prepared and served by the Culinary Arts program students. Each year the creativity and passion in the Culinary Arts program is displayed through their dedication to catering this important event. Duane Ford, Foundation Director, and Samantha Goss, Foundation Assistant, presented awards to the donors that would be added to the Foundation’s Donor Wall. The Southwest Tech Foundation wants to thank all who are involved in this event and especially the donors for their continued support of Southwest Tech.



*Darrell Parrish accepts award for Hartung Brothers, Inc.*



*Sheila Ruchti accepts award for Livingston State Bank.*



*MJ Dachelet accepts award for Dachelet Family.*



*Tom and Renée Sigwarth accept award for Sigwarth Family.*

**Each year the Foundation is honored to change or add contributors to our Donor Wall in recognition of their gifts of \$10,000 or more!**



**\$100,000+**

*Allen Eck Estate*

**\$25,000+**

*Livingston State Bank*

**\$10,000+**

*Derek and MJ Dachelet*

*Tom and Renée Sigwarth Family*

*Fuller’s Milker Center*

*Hartung Brothers, Inc.*

*Prairie Industries, Inc.*

*Dillman, a Division of  
Astec, Inc.*

*Zimmerman Architectural  
Studios, Inc.*

## Southwest Tech is a Family Affair



When Advance Transformer of Platteville closed its doors in 1996, Tom McCall decided not to take the offer to go back to school at that time, but accepted a position with Rayovac in Fennimore. In 2007, Tom once again suffered a layoff, and when he could not find another job he decided to go to Southwest Tech for a career in the ever-expanding healthcare field. "It's a great school," said Tom. "The staff at the College really wants you to be successful. When you finish at Southwest Tech, you can walk right into the workforce with the tools you need to be successful."

When his son Derek had taken time off from his four-year college education, Tom directed him to Southwest Tech's Medical Lab Tech Program. "Not everyone is cut out for a four-year college or has a clue what they want to do with their life," stated Tom. "I trusted that Southwest Tech would provide my son with the same high-skilled hands-on training that I received." Tom graduated in the spring of 2012 from the Nursing-Associate Degree Program and currently works as the Clinical Informatics Specialist RN at Epione Pavilion in Cuba City. Derek graduated in 2013 from Southwest Tech's Medical Lab Tech Program and works for United Clinical Labs in Dubuque, IA. Echoing his dad's claims Derek said, "Southwest Tech's instructors are top notch, giving you direct knowledge and life lessons that you can't get anywhere else."

## Copus Honored with Giving Tree



The first 'Giving Tree' was dedicated to Harriet Copus on July 22, 2014. For over 22 years, Harriet Copus was the friendly voice at the end of the phone when people called Southwest Tech. Southwest Tech celebrated Copus' commitment to the campus with a cake and punch reception at the College. Friends shared stories

and reminisced about how much Harriet meant to the College and to those who worked there.

Copus' Giving Tree is located outside of Building 100 with a plaque that reads, "Friendship is a sheltering tree," a quote from "Youth and Age," by Samuel Taylor Coleridge.

Following her retirement in 1994, Copus continued to stay involved with the campus as a Futuremaker and an advocate for the College's programs, faculty, staff and students. Harriet Copus moved to Kansas at the end of July to be closer to her son, Larry. Copus said, "Southwest Tech is my family and has always been there for me whenever I needed them. It will be hard to leave my family." While she may be miles away, her legacy will forever stay with Southwest Tech.

## Giving Tree Program

The Southwest Tech Foundation's Giving Tree Program was established so individuals could sponsor a living tribute in honor of a loved one or special event while contributing to the ongoing beautification of campus. With every Giving Tree, contributors will be honored with a plaque featuring a dedication of their choice. The Foundation will plant Giving Trees on campus once each spring. Special thank you to Instant Shade Nursery, Platteville, and Signs To Go, Platteville, for supporting the Giving Tree Program.

### GIVING TREE LEVELS



**\$100**

***Help Keep Campus Beautiful***



**\$300**

***Plant a 2.5-inch Diameter Tree***



**\$500**

***Plant a 4-inch Diameter Tree***

**To dedicate a tree, please contact the Southwest Tech Foundation at 608-822-2379 or [foundation@swtc.edu](mailto:foundation@swtc.edu)**

*Together we will*  
**PLANT** *the*  
*Future*



## Allen Eck Estate Legacy Gift – Here, Then. Here, Now. Here, Always.



The Southwest Tech Foundation is proud to announce a gift of over \$93,000 from the estate of Mr. Allen Eck, of Stitzer, who passed away on September 20, 2013. Mr. Eck made his gift through a bequest in his estate plans and has been honored as a member of the Southwest Tech Foundation Visionary Circle.

“Southwest Tech and the Southwest Tech Foundation are very appreciative of Mr. Eck’s generosity,” said Betsy Tollefson, Director of Development for the Southwest Tech Foundation. “Mr. Eck’s legacy of supporting technical education in Southwest Wisconsin will be carried on through the programs and students his gift will support for years to come,” said Tollefson.

Including the Southwest Tech Foundation in your estate plans allows you to enjoy the benefits of a gift to charity while making a powerful statement about your support for technical education. Remembering Southwest Tech Foundation in your Will, Trust, or other estate plans will help thousands of students achieve their career and technical education goals.

*We are proud to honor our Visionary Circle members, and are so very grateful to those whose realized gifts help make our life-changing educational programs and career training opportunities possible.*

Glenn Fritz  
Daryl Tresner  
Brad and Mindy Johnson  
Harriet Copus  
Allen Eck  
Eileen Gander  
Patricia Payson

The Visionary Circle is our special way of recognizing those whose planned gifts ensure a healthy future for the Southwest Tech Foundation, the College’s programs, and thousands of Southwest Tech students in need of assistance to complete their education.

### How can I join the Visionary Circle?

#### Planned Giving

There are many ways to benefit Southwest Tech as you make giving plans:

- Name Southwest Tech as a beneficiary in a Will or Living Trust
- Make a gift of cash or appreciated securities to establish a charitable gift annuity with Southwest Tech
- Create a Charitable Remainder Trust (CRT) and name Southwest Tech as the beneficiary
- Name Southwest Tech as the beneficiary of a paid life insurance policy or a retirement account

To include Southwest Tech in your plans, you will need the following information:

- **Legal Name:**  
Southwest Wisconsin Technical College Foundation, Inc.
- **Legal Address:**  
1800 Bronson Blvd. Fennimore, Wisconsin 53809
- **Federal Tax ID:**  
39-1828080
- **Type of Organization:**  
501(c)(3) nonprofit

We hope you’ll consider becoming a member of our Visionary Circle. In doing so, we will be honored to list your name on our Southwest Tech Foundation Future-Maker wall located across from the College Connection at Southwest Tech’s main entrance and in our annual report. Additionally, you will be invited to our annual appreciation event and other special activities exclusive to Visionary Circle members.

## Southwest Wisconsin Technical College Foundation, Inc. Statement of Financial Position June 30, 2014 and 2013

ASSETS	2014	2013
Cash	\$252,557	\$237,323
Unconditional promises to give	20,700	28,767
Emergency loans receivable	2,028	2,737
Rent receivable	191,904	25,090
Investments	3,053,109	2,726,395
Property and equipment-net	<u>1,883,427</u>	<u>1,939,634</u>
<b>Total Assets</b>	<b><u>\$5,403,725</u></b>	<b><u>\$4,959,946</u></b>
<b>LIABILITIES</b>		
Accounts payable/accrued expenses	\$178,638	\$47,780
Security deposits	32,929	34,698
Funds held for others	14,000	14,000
Mortgage payable	<u>1,591,292</u>	<u>1,651,727</u>
<b>Total Liabilities</b>	<b><u>1,816,859</u></b>	<b><u>1,748,205</u></b>
<b>NET ASSETS</b>		
Unrestricted	712,369	575,722
Temporarily restricted	1,709,497	1,541,019
Permanently restricted	<u>1,165,000</u>	<u>1,095,000</u>
<b>Total Net Assets</b>	<b><u>3,586,866</u></b>	<b><u>3,211,741</u></b>
<b>Total Liabilities and Net Assets</b>	<b><u>\$5,403,725</u></b>	<b><u>\$4,959,946</u></b>

## Southwest Tech Foundation Futuremakers 2013-2014

The following individuals, businesses, and organizations made a contribution to the Southwest Wisconsin Technical College Foundation between July 1, 2013, and June 30, 2014. The support of these individuals, businesses, and organizations is helping shape the future of Southwest Tech and technical education in Southwest Wisconsin!

<b>INVESTOR</b> [\$75,000 +]		<b>PRODUCER</b> [\$500-\$999]	<b>STAKEHOLDER</b> [\$100-\$499]	
<hr/>	Marilyn Gibson			Becky Fernette
Allen Eck Estate	Grant Regional Health Center Foundation	Ruth Anderson	Terry and Helen Mar Adams	Mike and Nancy Flanagan
<hr/>	Hartung Brothers, Inc.	Julie A. Antonson	American Family	Chris L. Foley
<b>PARTNER</b> [\$50,000-\$74,999]	Heartland Credit Union	Steve and Lori Barry	Alan Ames	David Fritz
<hr/>	Estate of Dorothy Hofstetter	Kaye Baus	Katie Anderson	Cindy L. Frohne
<hr/>	Karen Jessen	James and Joyce Czajkowski	Valerie Bailey	John and Karen Gander
<b>CHAMPION</b> [\$25,000-\$49,999]	Jim's Building Center	Mary E. Davis	Loren and Martha Bausch	Grant County Economic Development Corp.
<hr/>	Brad and Mindy Johnson	Robert and Melissa Fitzsimons	Michelle L. Bennett	Grant Equipment Co., Inc.
<hr/>	Doug and Karen Knox	Katie Garrity	David and Amy Birkelo	Ron and Chantel Hampton
<hr/>	Kramer & Brownlee, LLC	Good Samaritan Society-Fennimore	Birkett Chiropractic	Terry Hanson
<hr/>	Thomas and Sarah Kretschman	Joy A. Kite	Brad and Laura Bodenbender	Patty Hartline
<b>ASSOCIATE</b> [\$10,000-\$24,999]	Livingston State Bank	Vern and Suzann Lewison	Louise M. Bradley	Murray Heitzer
<hr/>	Majestic View Dairy LLC	Mike and Nancy Mair	J. Bruce and Margaret Bradley	Jean Hennessy
Districts Mutual Insurance	Julie Molek	Midwest Builders, Inc.	Marty and Charity Bray	Phil A. Hipper
Professional Staff Association	Jim and Joyce Neuendorf	Miniature Precision Components	Tonia M. Breuer	Heather and Jamie Horsfall
Rayovac Corporation	Peoples State Bank	Jeff and Sondra Ostheimer	Dirk and Stephanie Brown	Mary and Bill Hudson
Tom and Renée Sigwarth	Richard and Carol Rogers	John and Julie Pluemer	Cabela's, Inc. (Corporate Headquarters)	ITW-Shakeproof Automotive
<hr/>	Shyrle Sedgwick	Professional Birthing Services	Cory W. Calvert	Ivey Construction
<b>ASSISTANT</b> [\$5,000-\$9,999]	Sielaff Corporation	Robert J. Robbins	Linda L. Collins	Eric and Mary Johannesen
<hr/>	SWAT Accounting Club	Scenic Rivers Energy Cooperative	Amy and Ronald Coppernoll	Scott and Sheri Kennedy
First Merit Bank	Phil and Debra Thomas	Tom and Joan Sheehan	Susan Crouch	Garry Kirk
Duane and Sheri Ford	United Fund of Iowa County, Inc.	William and Shirley Sincox	Grant and Barbara Cutting	Brian K. Kitelinger
Garrison Lincoln Trust	Wisconsin Agri-Business Association	Southwestern Wisconsin Branch of the QDMA	Nancy Devlin	Paul and Kathy Korb
Rockwell Automation		Harold and Lenore Sydnor	Sherry DeVries	Carey A. Kreul
TRICOR		Tyler and Betsy Tollefson	Mark and Mary Dimick	Jenny Lamé
<hr/>		Dean and Barbara Tucker	DS Mechanical, LLC	Lancaster Auto Body
<b>LEADER</b> [\$1,000-\$4,999]		Wisconsin Golf Course Owners, Inc.	Energy Management Consultants	Gary and Connie Landon
<hr/>		Gregory and Kris Wubben	Daniel and Tamara Engelke	Larry and Dawn Langmeier
Michael and Norma Cornell			Esthetics Club, Southwest Tech	Larry's Welding & Manufacturing, Inc.
Derek and MJ Dachelet			Feinstein Foundation	Brian and Connie Larson
Dillman, a Division of Astec, Inc.				
George Dulzo				
Elmer G. Biddick Foundation				
Fuller's Milker Center, Inc.				



Gregory and Kelly Lesko  
Elise Lindeman  
Russell and Christine Lindner  
David and Amy Loy  
Rita Luna  
Michael and Barb McCormick  
Ron and Diann Meissner  
Darlene Mickelson  
Jody Millin  
Pat and Jennifer Oyen  
Joe and Gerri Reuter  
Dan and Lisa Riley  
Helena Robinson  
Jane and Dennis Roesch  
Don and Connie Sadler  
Schmitt Woodland Hills  
Kristen M. Schoville  
Danielle L. Seippel  
Shear Glory, Inc.  
Southwest Accounting  
Terry and Mary Sprosty  
Lisa Sterrett  
Terry and Rhonda Sutton  
Scott and Chris Swan  
The Shopko Foundation  
Upland Hills Health  
Mary U'Ren  
Warco Transportation  
Colleen Watters  
Randy and Shelly Weeks  
Jennifer Weigel  
Caleb and Brenda White  
Gary and Kristy Wiest  
Kevin and Lori Wiest  
Willow Valley, LLC  
Randy and Colleen Woodworth

**SUPPORTER**  
[Up to \$99]

Tonya Archie  
Brad and Sara A. Bahl  
Matthew and Leah Baute  
Kerry Beerkircher  
Bryan W. Bender  
Marjorie S. Bennett  
Angela T. Bindl  
Jerome and Susann Bischoff  
Lora G. Bishell  
John and Rebecca Borgwardt  
Brent M. Bussan  
Scot and Karen Campbell  
Janelle J. Cisneros  
Brian Claver  
Keith and Lynette Clayton  
Brien J. Cleary  
Ellen and Dennis Conley  
Arleen R. Conner  
Harriet Copus  
Rob and Ashley Crubel  
Jared and Holly Crubel  
John and Debra Deackman  
Heidi Deininger-Kinney  
Amanda Dillenburg  
Ted and Lisa Droessler  
Carroll P. Ehrhardt  
Kathryn M. Hastert Ernzen  
Ronald and Linda Errthum  
Daniel and Evelyn Esser  
Paul A. Esser  
Jessica Esser  
Peter and Lisa Esser  
Family Dental Care  
Carolyn C. Farid

William Fehrmann  
Mary Ann Fox  
Delton N. Fransen  
Michael and Donna Gethings  
Christopher W. Gobrecht  
Kenneth and Joan Goldsmith  
Andrew J. Goodney  
Christopher A. Goold  
Jesse D. Grutz  
Robert and Connie Haberkorn  
CoraBeth Halverson  
John and Sandy Hauth  
Royce and Margaret Havlik  
Heiser Hardware  
Ryan and Anne Hill  
Russell and Jean Horn  
Brian and Denise Janssen  
Karla F. Jerry  
Kevin and Kelly Kelly  
Gregory and Joanne Kinney  
Tracy M. Kreul  
Lafayette County Abstract  
Mike and Gloria Landon  
Trevor J. Landon  
Marla Leibfried  
Todd F. Lomas  
Mike and Donna Marchese  
Timothy and Susanne May  
Dave and Tina Mayer  
Janean A. McCormick  
Greg and Lisa McGuire  
Douglas and Marcia Miller  
Joyce Mueller  
Paul and Louise Murphey  
My Tires, Inc.  
Lance and Kimberly Neis

Andrew J. Nelson  
Karyl Nicholson  
Pat and Patti Obma  
Jennifer L. Oyen  
David and Delores Pace  
Curtis and Jeanne Palmer  
Doug Pearson  
Julie Remily  
John and Sherri Rudersdorf  
Jamie D. Seitz  
Shullsburg Auto  
Robert E. Spileos  
Abbey S. Spurgeon  
Jim and Catherine Stacy  
Frederick J. Steiger  
Sheila M. Stelpflug  
Scott and Chyme Stimart  
Michael and Margaret Stoehr-Schedivy  
Shirley Straka  
Kathleen Suddeth  
Eileen G. Temte  
Mark D. Tracy  
Kevin and Mary Ubersox  
Shirley Von Glahn  
Jeremy and Nicole Waterman  
Amanda D. Webster  
Mark A. Wedige  
Pauline Wetter  
Lisa M. Whitish  
Scott and Brandee Wilker  
Kathy Witzig

**Southwest Tech  
Foundation  
Futuremakers**

What is a Southwest Tech Foundation Futuremaker?

A Futuremaker is a person who invests in the future of Southwest Tech! A Futuremaker takes action in helping ensure technical education will be accessible here in Southwest Wisconsin.

A Futuremaker believes quality technical education should be available at an affordable cost to our friends and neighbors.

A Futuremaker partners with business and industry to ensure students meet industry standards and exceed employer expectations.

A Futuremaker financially supports the Southwest Wisconsin Technical Foundation annually to ensure Southwest Tech students get the assistance they need to successfully complete their programs and meets the needs of area employers today, tomorrow, and in the future!

*The Southwest Tech Foundation spent a great deal of time researching records to produce this list of contributors. If your name is not listed and you made a contribution between July 1, 2013, and June 30, 2014, please contact the Foundation and the correction will be noted in the next annual report.*

*For their generous donation toward the  
printing of the Annual Report,  
a very special thank you to*

SIELAFF CORPORATION  
DESIGN. ENGINEER. MANUFACTURE.



JIM'S BUILDING CENTER, INC.



Southwest  Tech  
Foundation

Southwest  
*Here. Now.*  Tech

1800 Bronson Boulevard, Fennimore, WI 53809

800.362.3322 / 608.822.3262

tdd 608.822.2072

[www.swtc.edu](http://www.swtc.edu)