



FM 2818 Super Street Construction Update

Debbie Albert, TTI

April 7, 2021

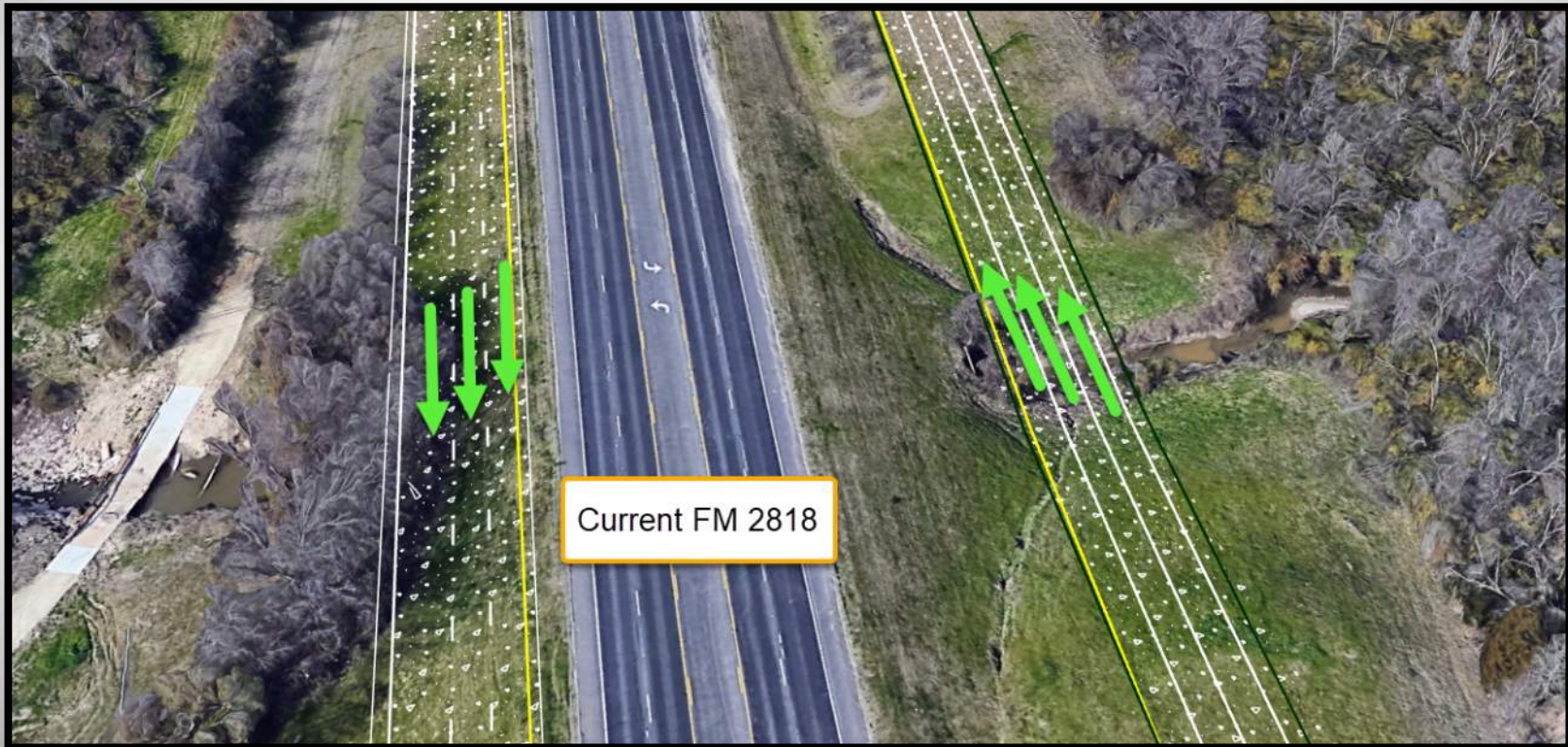
Project Summary

- Project overview
- Construction plan
- George Bush Drive intersection phasing
- Jones Butler Overpass
- FM 60 – Raymond Stotzer Parkway Underpass

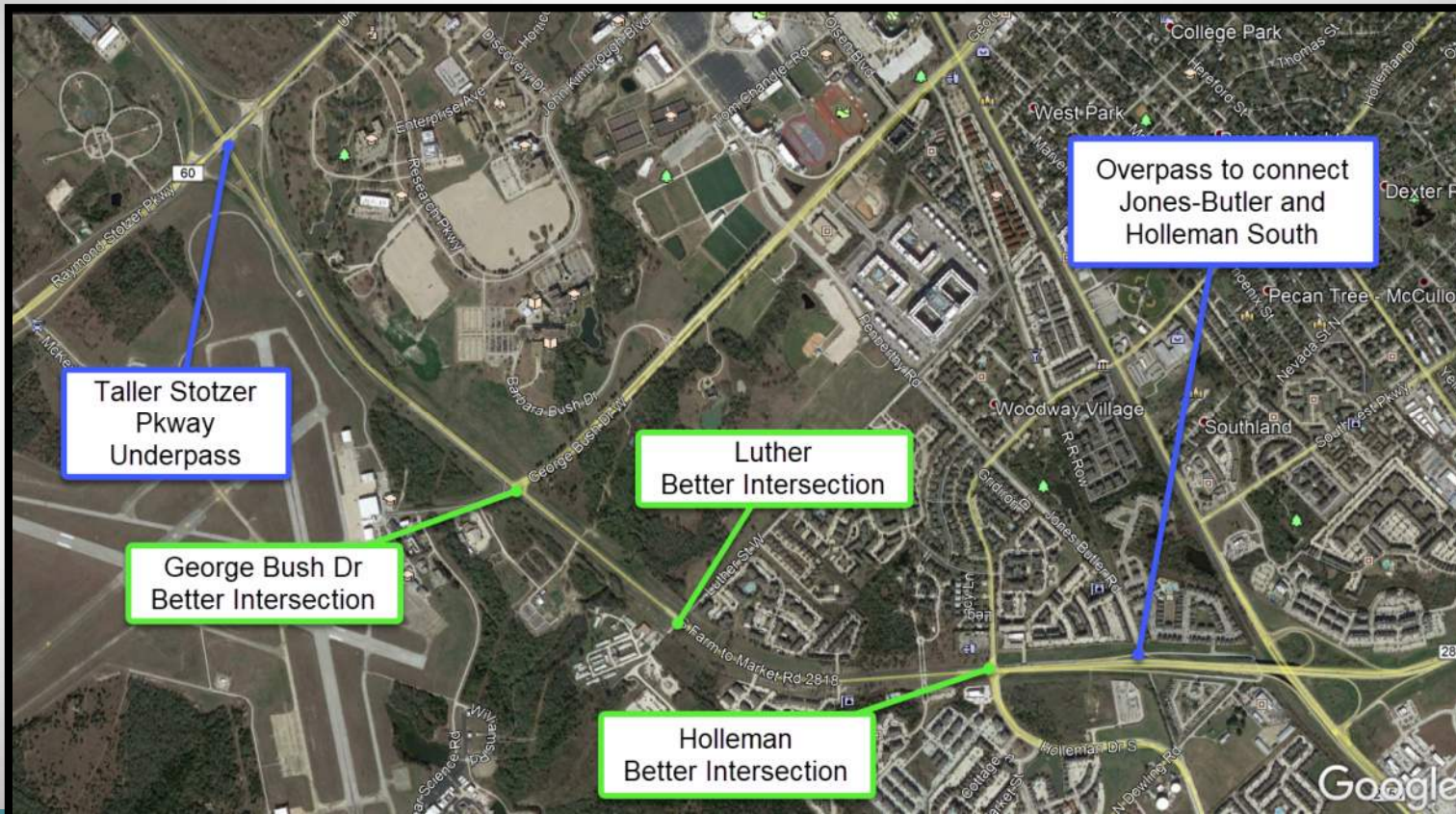
FM 2818 – Wellborn Rd to Stotzer Pkwy

- Widen from 4 lanes to 6 lanes
- Separate main travel lanes & reduce conflict points
- Increase green signal time by simplifying traffic operations
- Add Jones-Butler overpass
- Increase vertical clearance at Stotzer Parkway
- 30-month construction schedule

6-Lanes Divided Replacing the 5-Lane “Chicken Lane” Roadway



Overpasses and Intersections

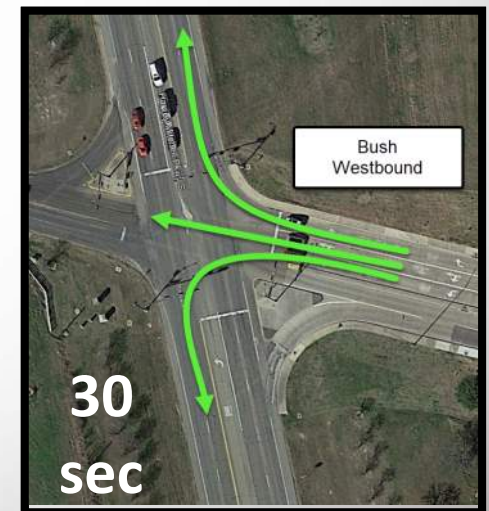
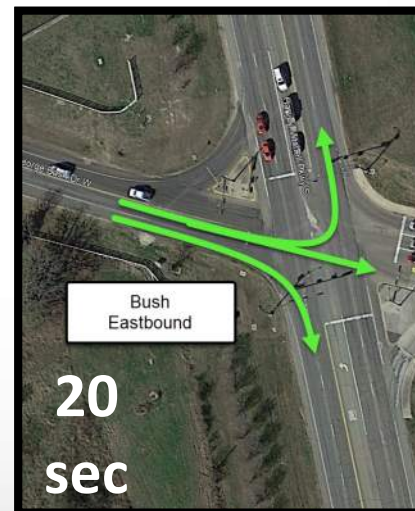
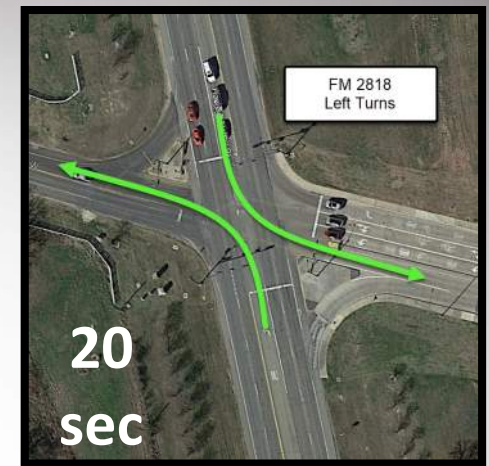
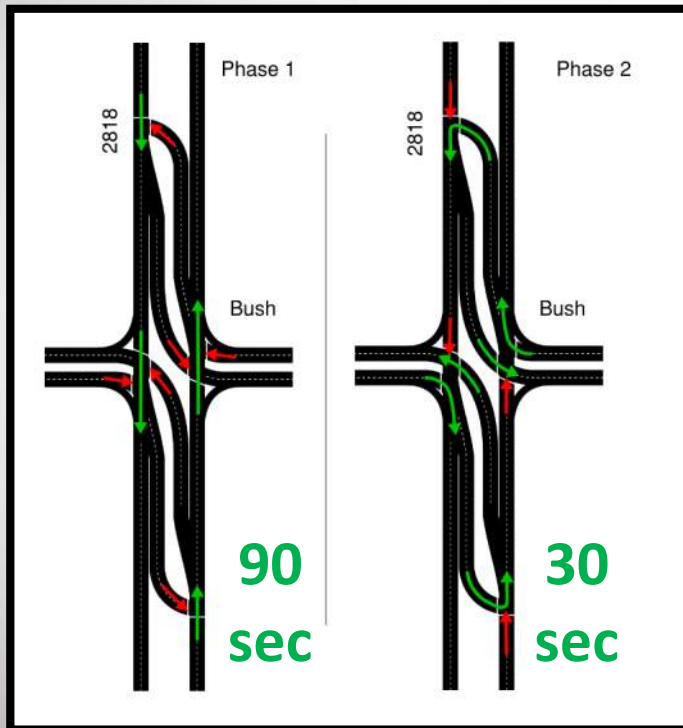


Let's Take a Closer Look at the Super Street Intersection



AD1

Super Street Intersection Operation



Slide 7

AD1

What is the vision here?

Albert, Debbie, 4/5/2021

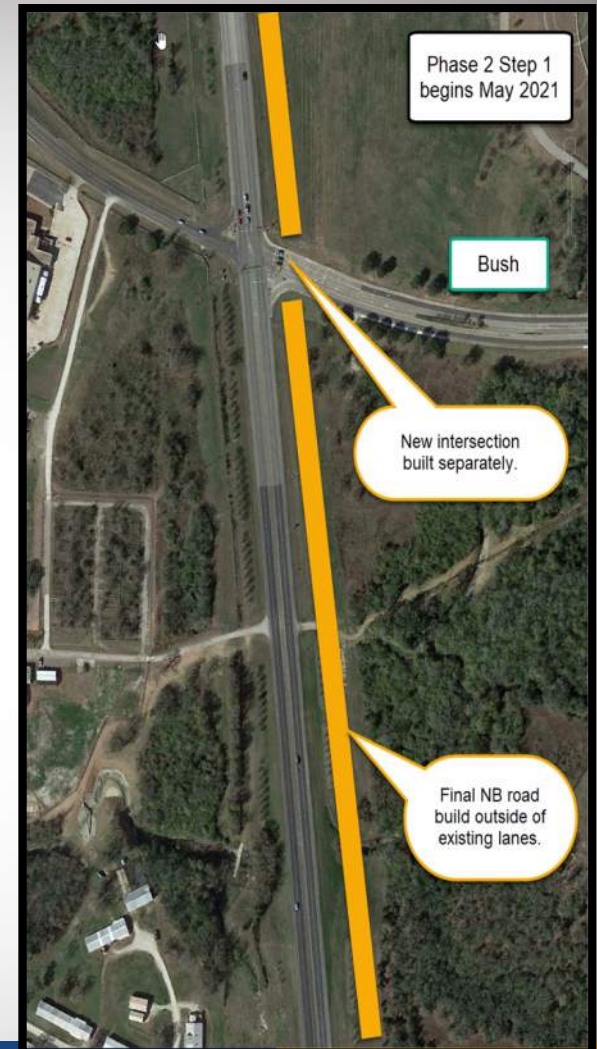
Construction Plan

- Phase 1 – Feb thru May 2021
 - Clearing
 - Utility/drainage work
 - Temporary Pavement



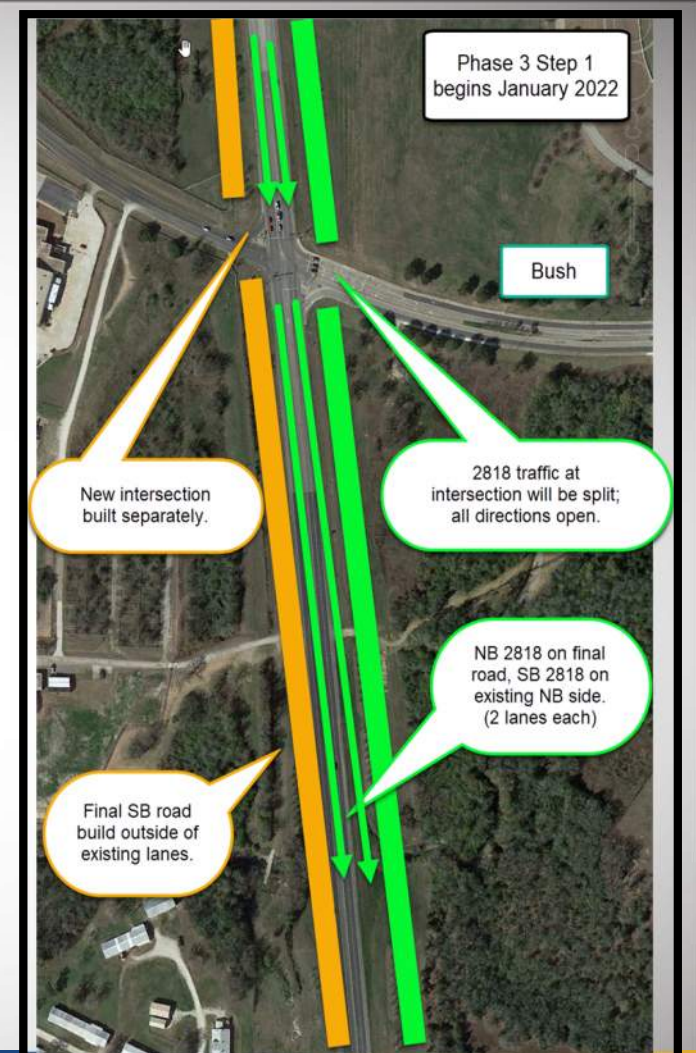
Construction Plan

- Phase 2 – May 2021 thru Jan 2022
 - Build northbound road in final location
 - 2818 traffic in current lanes
 - Intersection construction
 - Jones-Butler overpass construction
 - Stotzer Pkwy underpass construction
 - Temporary traffic signal work
 - Shared use path construction



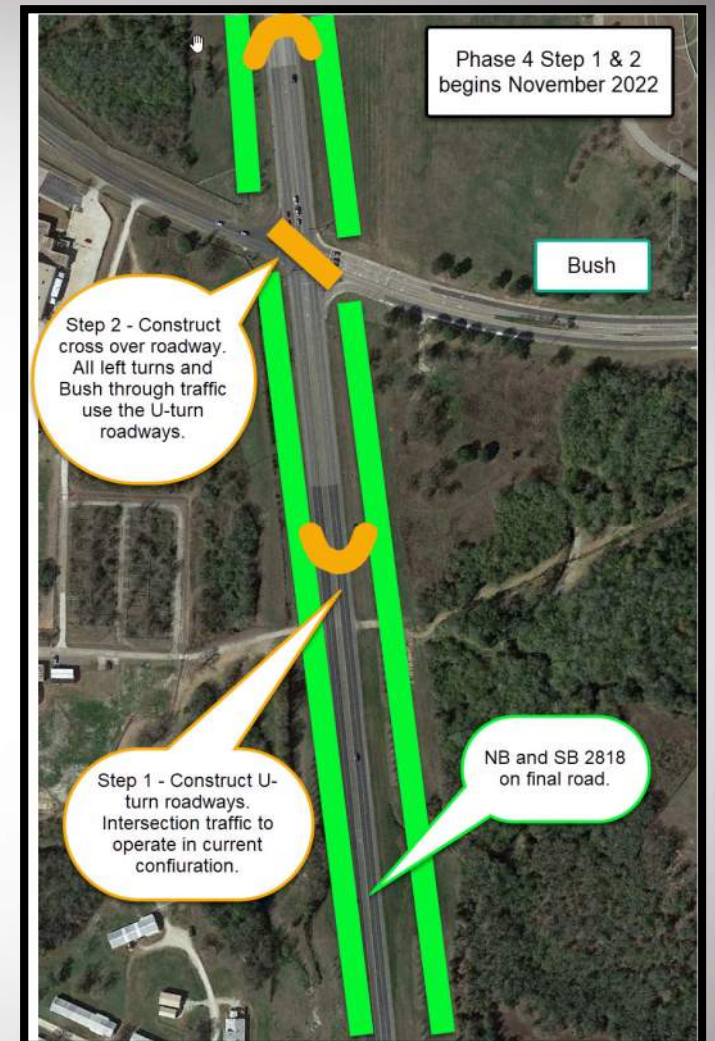
Construction Plan

- Phase 3 – Jan thru Nov 2022
 - Build ultimate southbound lanes
 - Northbound 2818 traffic on new lanes
 - Southbound 2818 traffic on existing northbound lanes
 - Intersection, Jones-Butler overpass and Stotzer underpass continue
 - Relocate temporary traffic signals



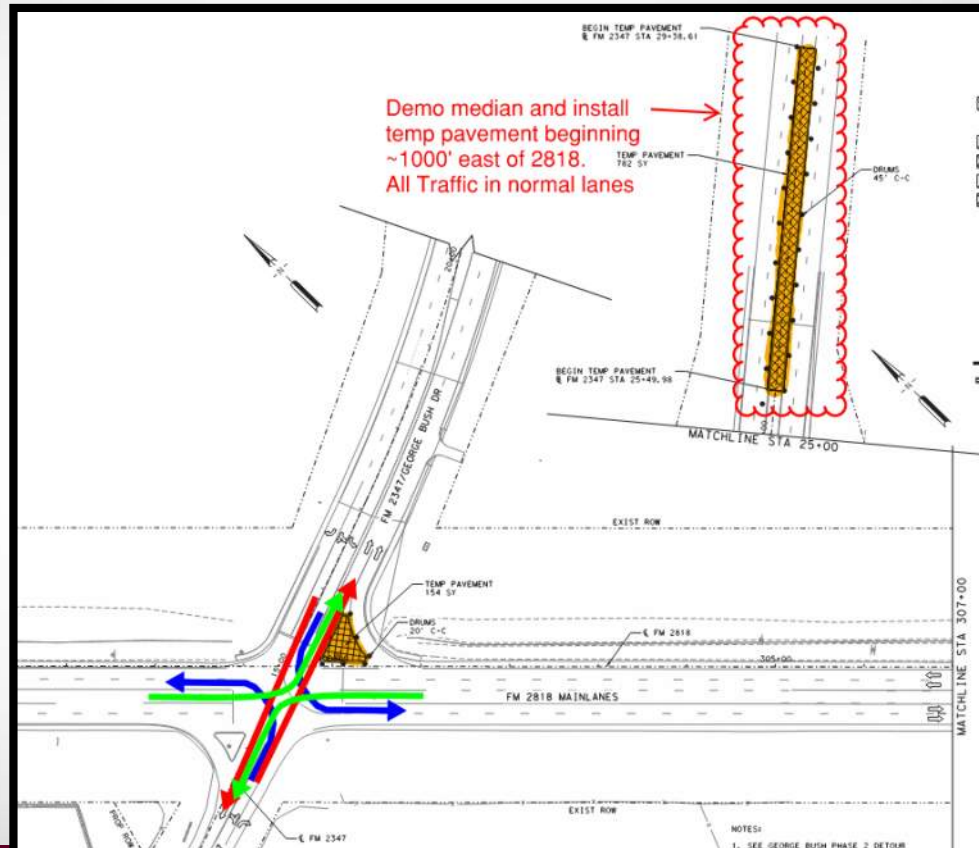
Construction Plan

- Phase 4 – Nov 2022 thru Summer 2023 (expected)
 - All 2818 traffic on new roadways
 - Construct “Super Street” intersections
 1. U-turn lanes
 2. Left turn cross overs
 - Jones-Butler cross street construction
 - Signals constructed in final locations



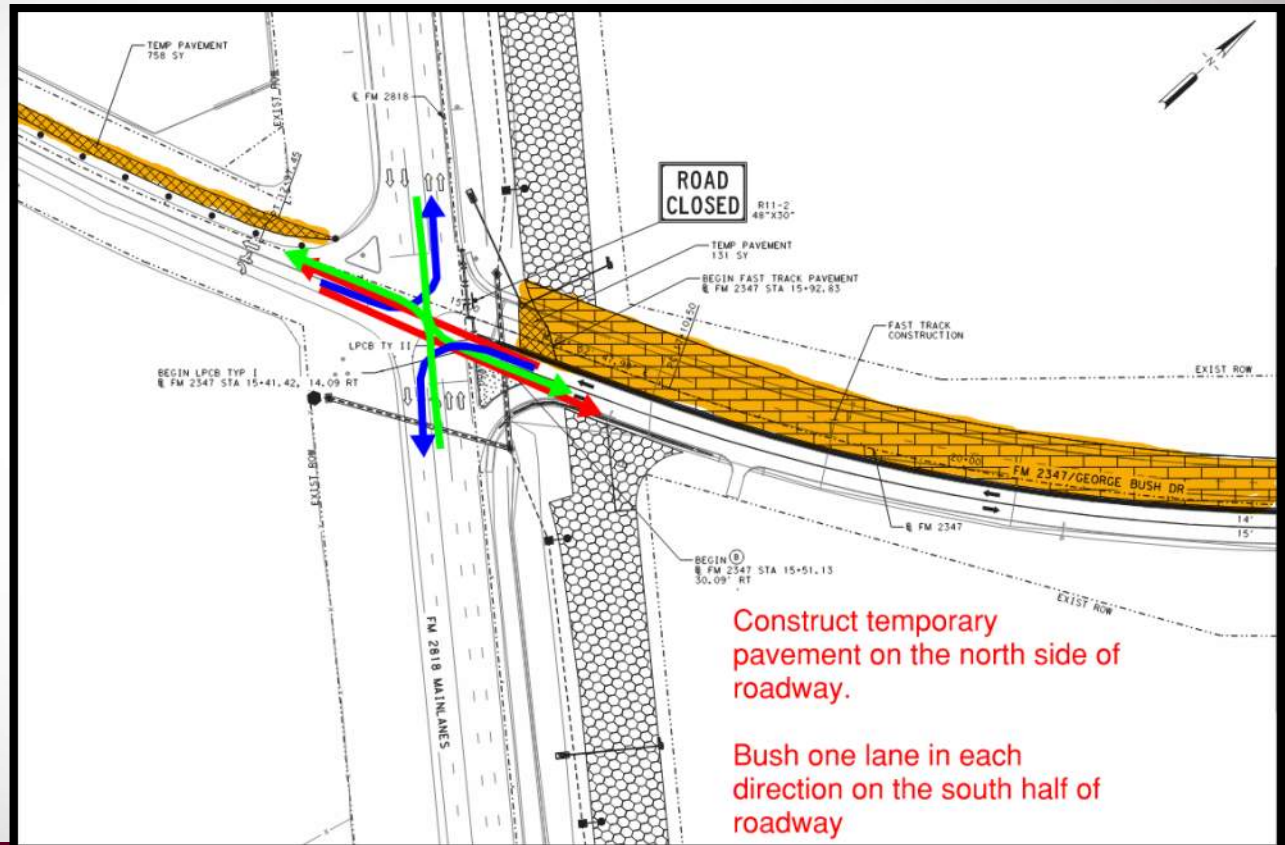
Intersection Phasing – George Bush Dr

- Phase 1



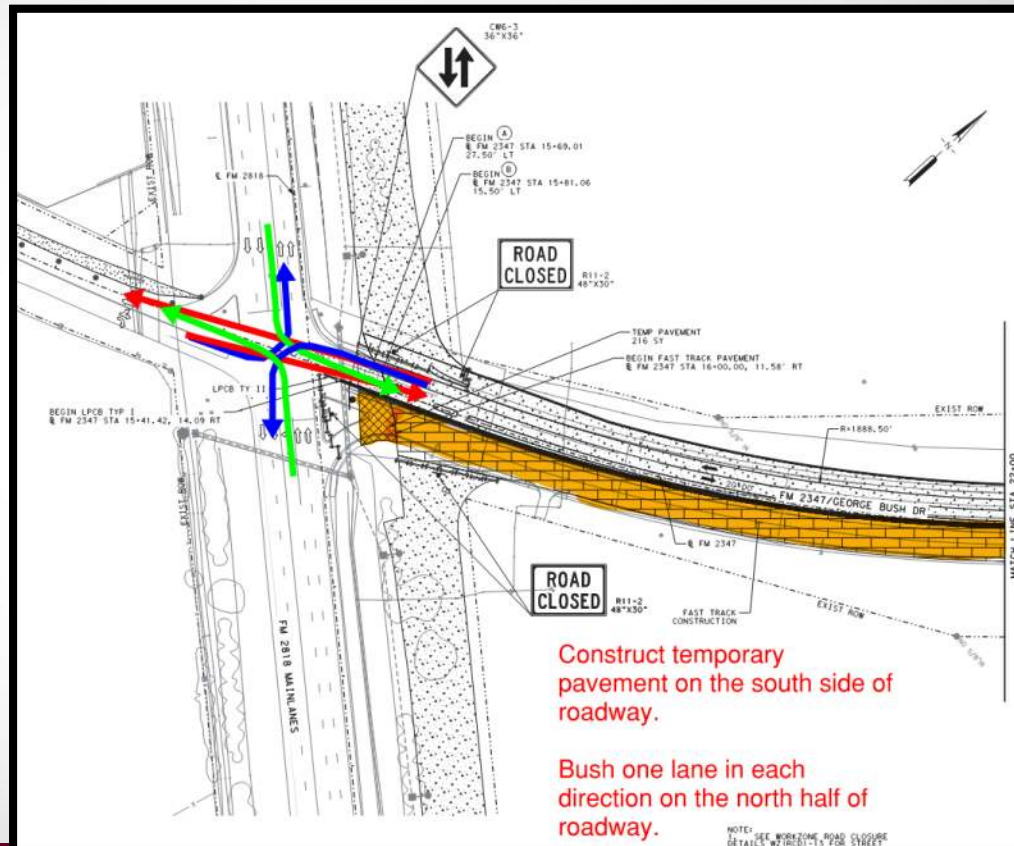
Intersection Phasing – George Bush Dr

- Phase 2 Step 1



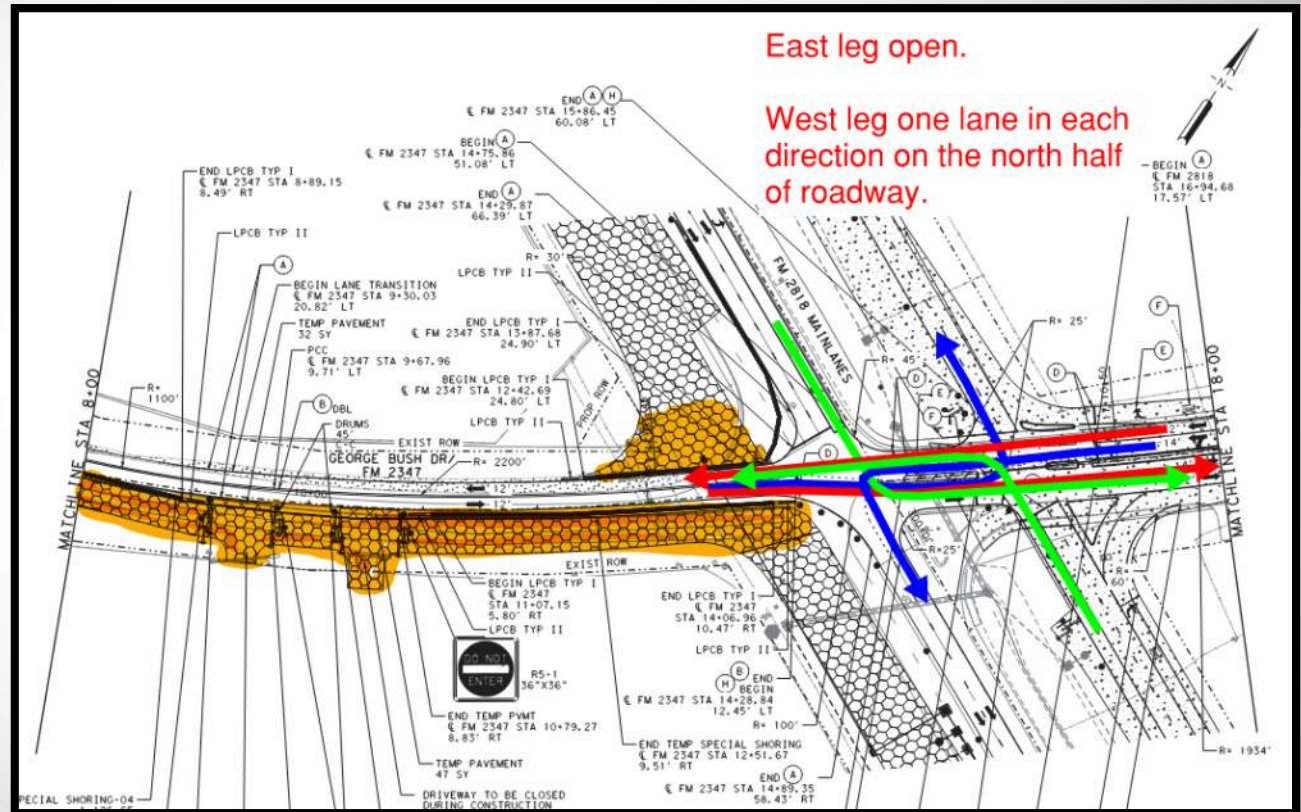
Intersection Phasing – George Bush Dr

- Phase 2 Step 2



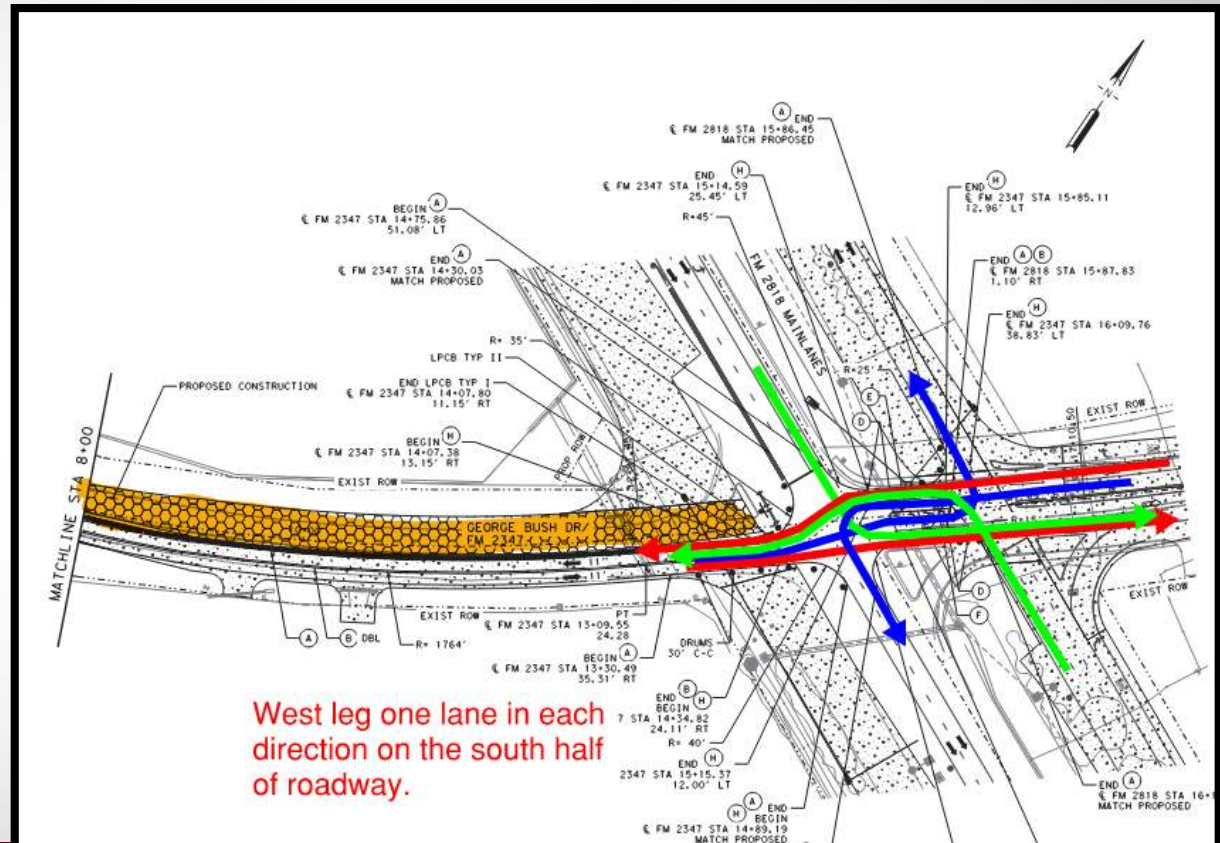
Intersection Phasing – George Bush Dr

- Phase 3 Step 1



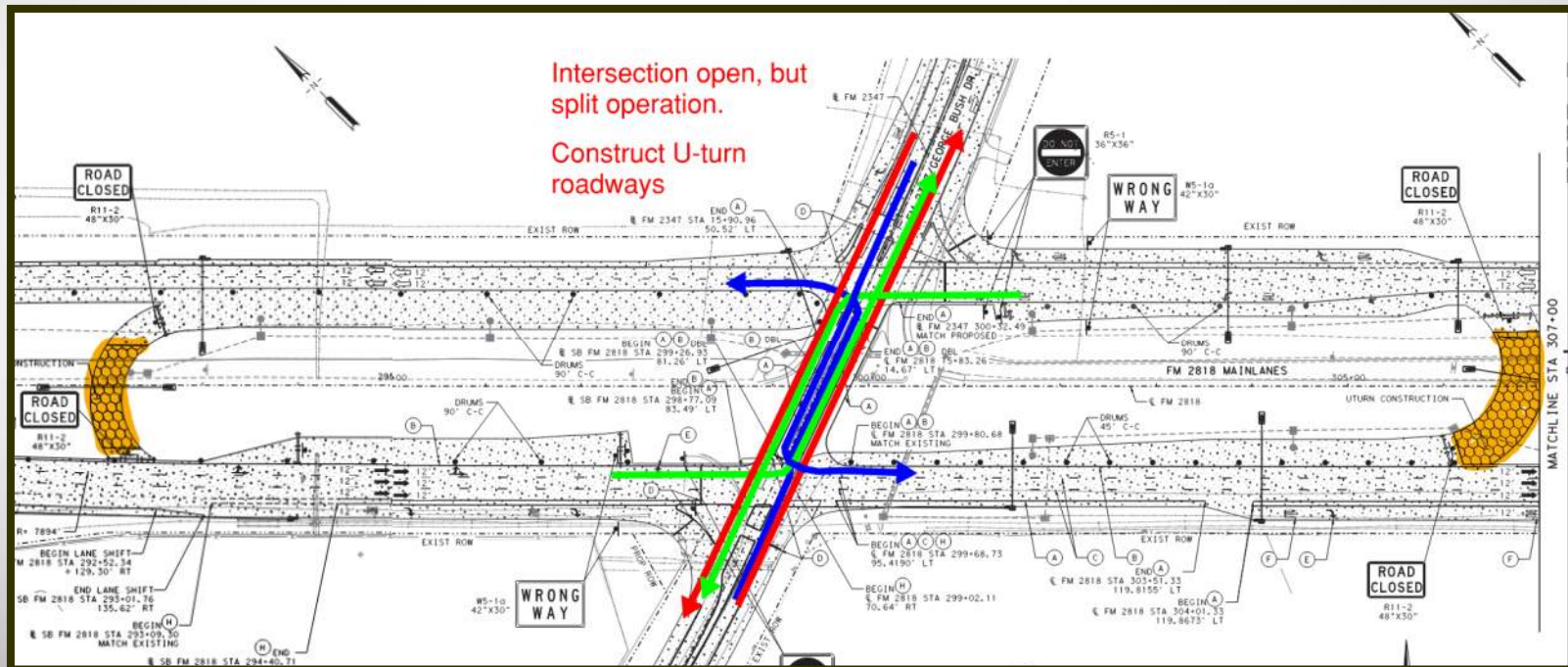
Intersection Phasing – George Bush Dr

- Phase 3 Step 2



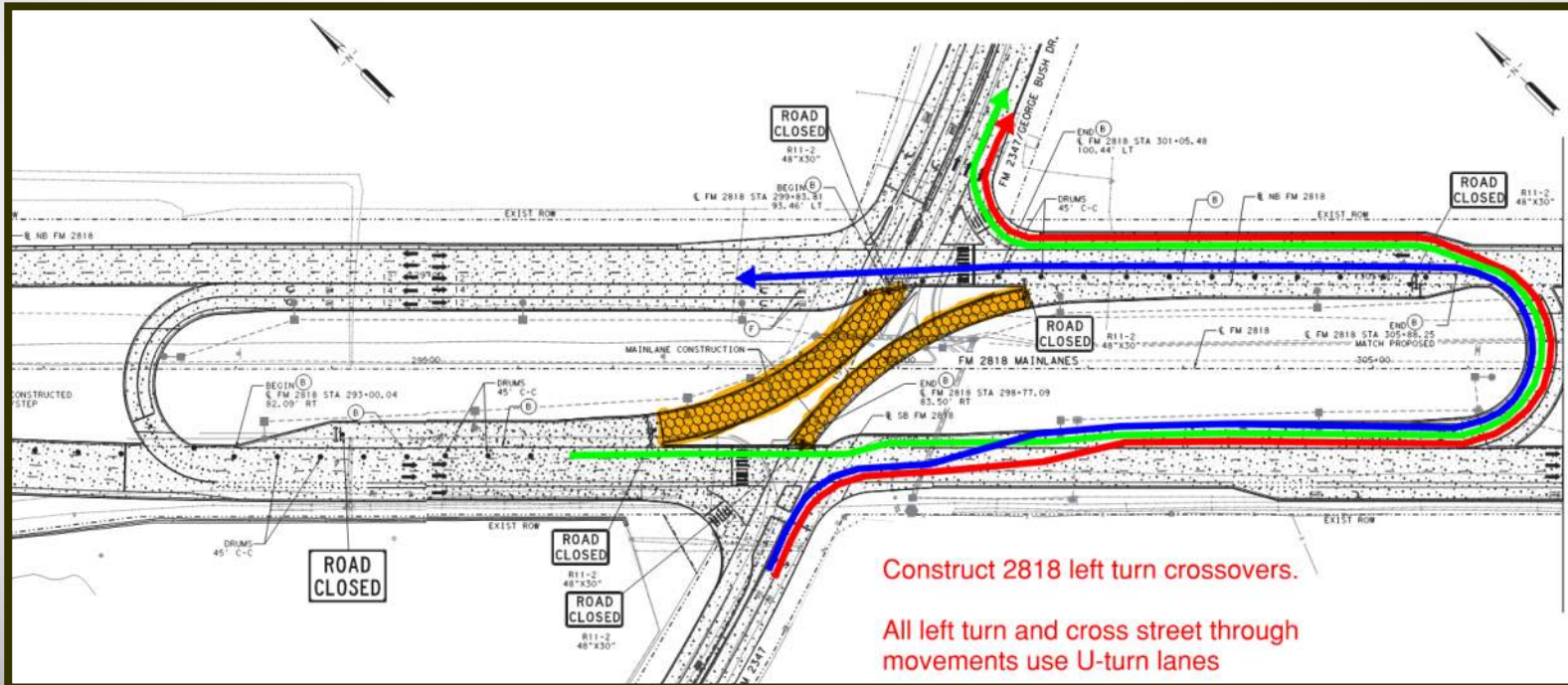
Intersection Phasing – George Bush Dr

- Phase 4 Step 1

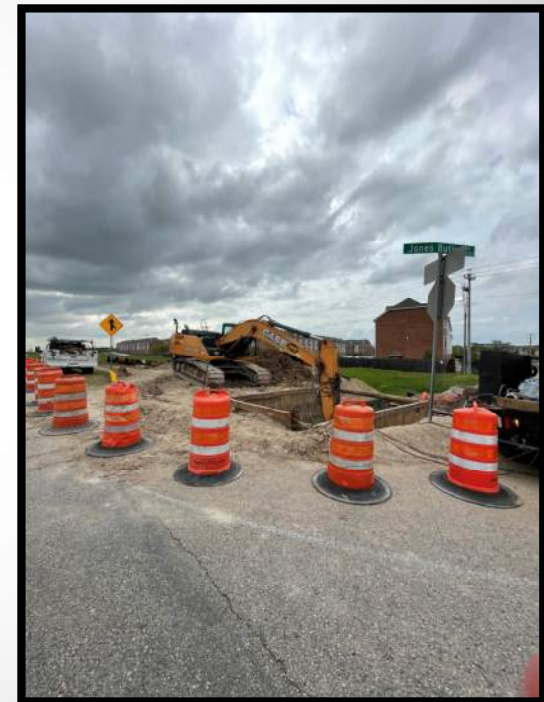
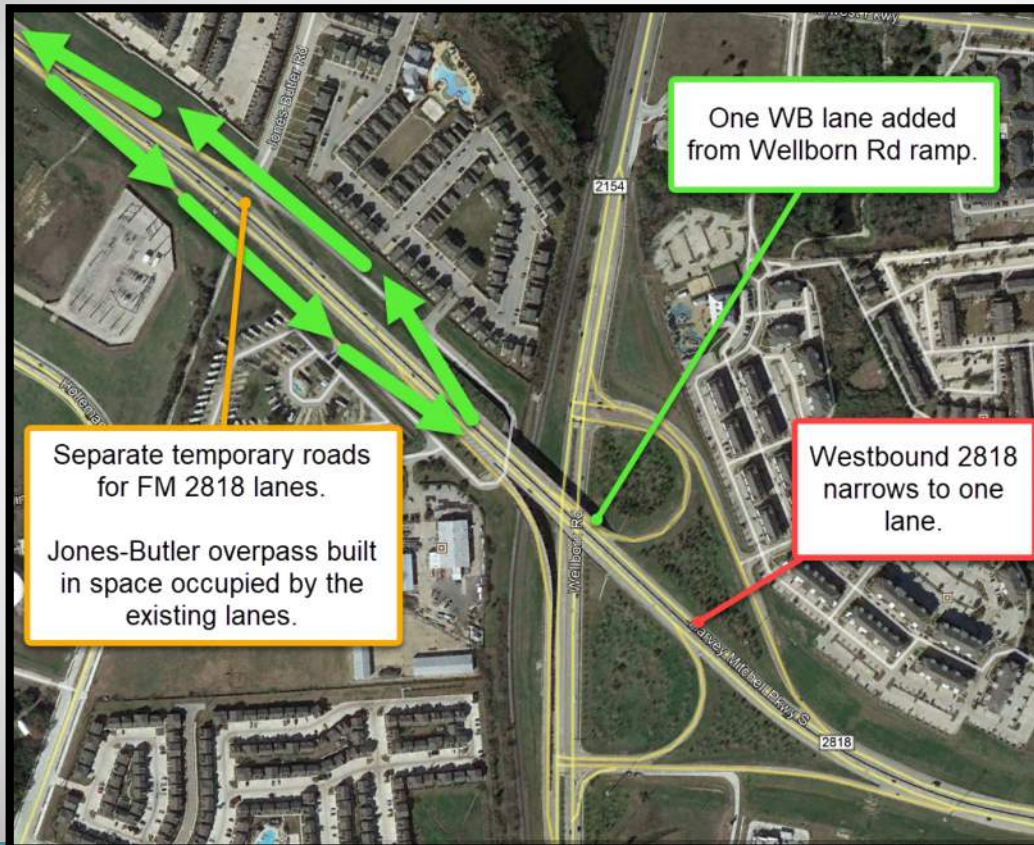


Intersection Phasing – George Bush Dr

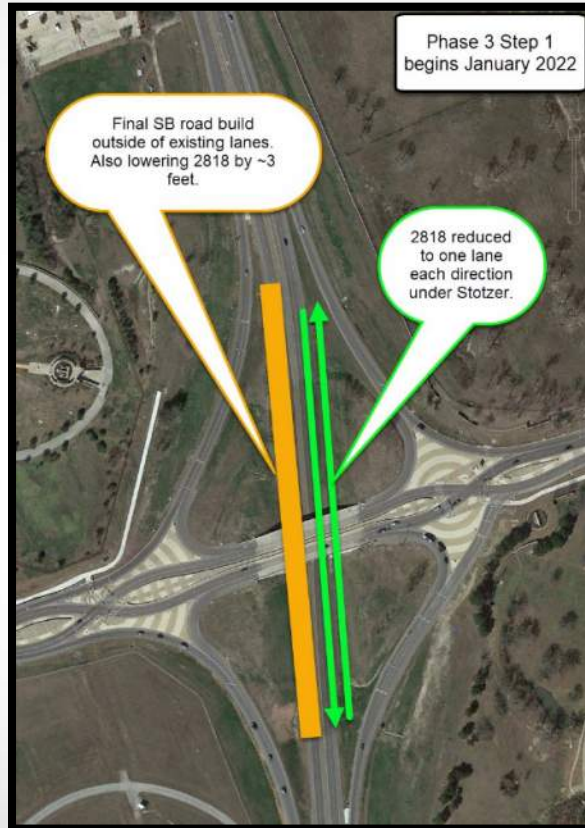
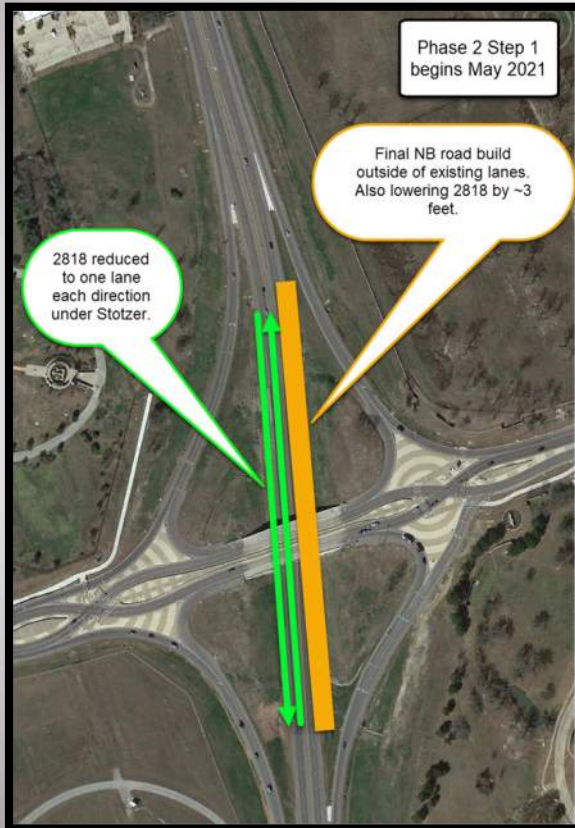
- Phase 4 Step 2



Jones-Butler Overpass Phasing

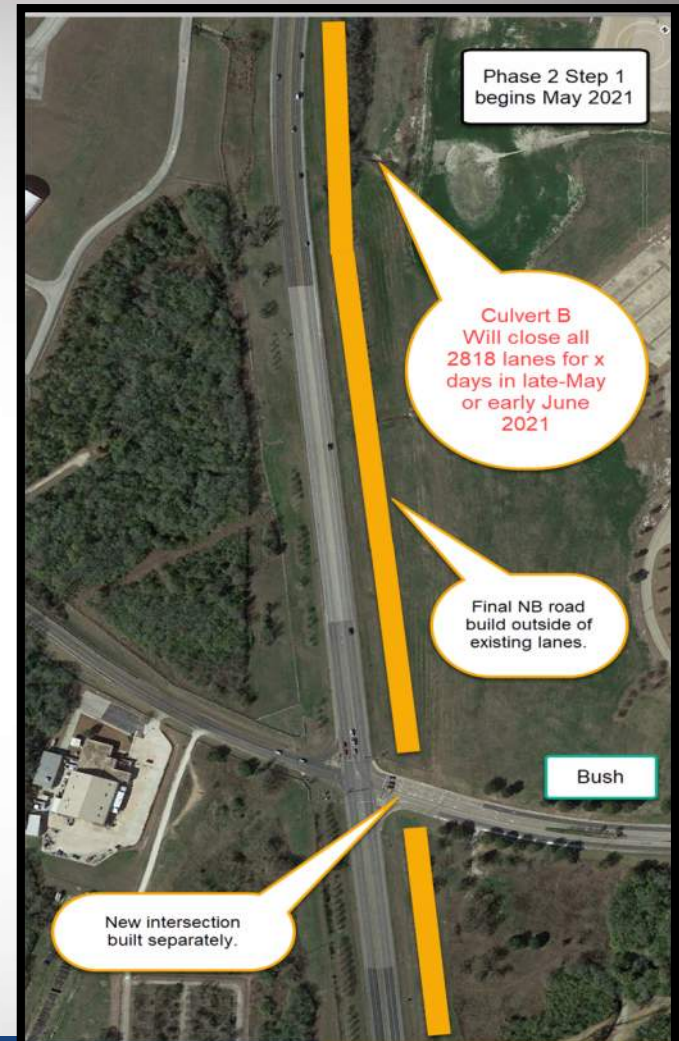


Stotzer Underpass



Upcoming Coordination

- Intersection construction
- Culvert B construction
- TAMU events
- Wellborn/Holleman construction
- <https://www.txdot.gov/inside-txdot/projects/studies/bryan/fm2818.html>





Debbie Albert

d-albert@tti.tamu.edu

(979) 317-2476