

Comments and Corrections

Corrections to “Image Guidance in Deep Brain Stimulation Surgery to Treat Parkinson’s Disease: A Comprehensive Review”

Yiming Xiao , *Member, IEEE*, Jonathan C. Lau , Dimuthu Hemachandra , Greydon Gilmore, Ali R. Khan, *Member, IEEE*, and Terry M. Peters , *Life Fellow, IEEE*

In our paper [1], the annotations of anterior commissure (AC) and posterior commissure (PC) in Fig. 3 should be switched. The correct image for Fig. 3 should be as follows:

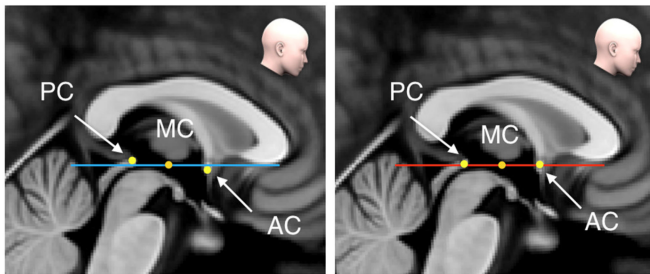


Fig. 3. AC-PC lines and MC points defined in Talairach atlas space (Left) and Schaltenbrand atlas space (Right), shown in the mid-sagittal plane of the T1w ICBM152 template. Note that the differences in the definition of AC-PC, and thus the reference coordinates to locate surgical targets.

REFERENCE

- [1] Y. Xiao *et al.*, “Image guidance in deep brain stimulation surgery to treat parkinson’s disease: A comprehensive review,” *IEEE Trans. Biomed. Eng.*, vol. 68, no. 3, pp. 1024–1033, Mar. 2021.

Manuscript received March 31, 2021; accepted March 31, 2021. Date of current version April 21, 2021. This work was supported by the BrainsCAN and CIHR fellowships for Yiming Xiao, and Support from CIHR Foundation under Grant FDN 201409. The work of Jonathan C. Lau was funded through the Western University Clinical Investigator Program accredited by the Royal College of Physicians and Surgeons of Canada and a CIHR Frederick Banting and Charles Best Canada Graduate Doctoral Award Scholarship. (*Corresponding author: Yiming Xiao.*)

Yiming Xiao is with the Robarts Research Institute, Western University, London, ON N6A 5B7, Canada (e-mail: yxiao286@uwo.ca).

Jonathan C. Lau is with the Robarts Research Institute, Western University, and also with the Department of Clinical Neurological Sciences, Division of Neurosurgery, Western University.

Dimuthu Hemachandra is with the Robarts Research Institute, Western University, and also with the School of Biomedical Engineering, Western University.

Greydon Gilmore is with the School of Biomedical Engineering, Western University.

Ali R. Khan is with the Robarts Research Institute, Western University, with the School of Biomedical Engineering, Western University, with the Department of Medical Biophysics, Schulich School of Medicine and Dentistry, Western University, and also with the Brain and Mind Institute, Western University.

Terry M. Peters is with the Robarts Research Institute, Western University, with the School of Biomedical Engineering, Western University, and also with the Department of Medical Biophysics, Schulich School of Medicine and Dentistry, Western University.

Digital Object Identifier 10.1109/TBME.2021.3070666