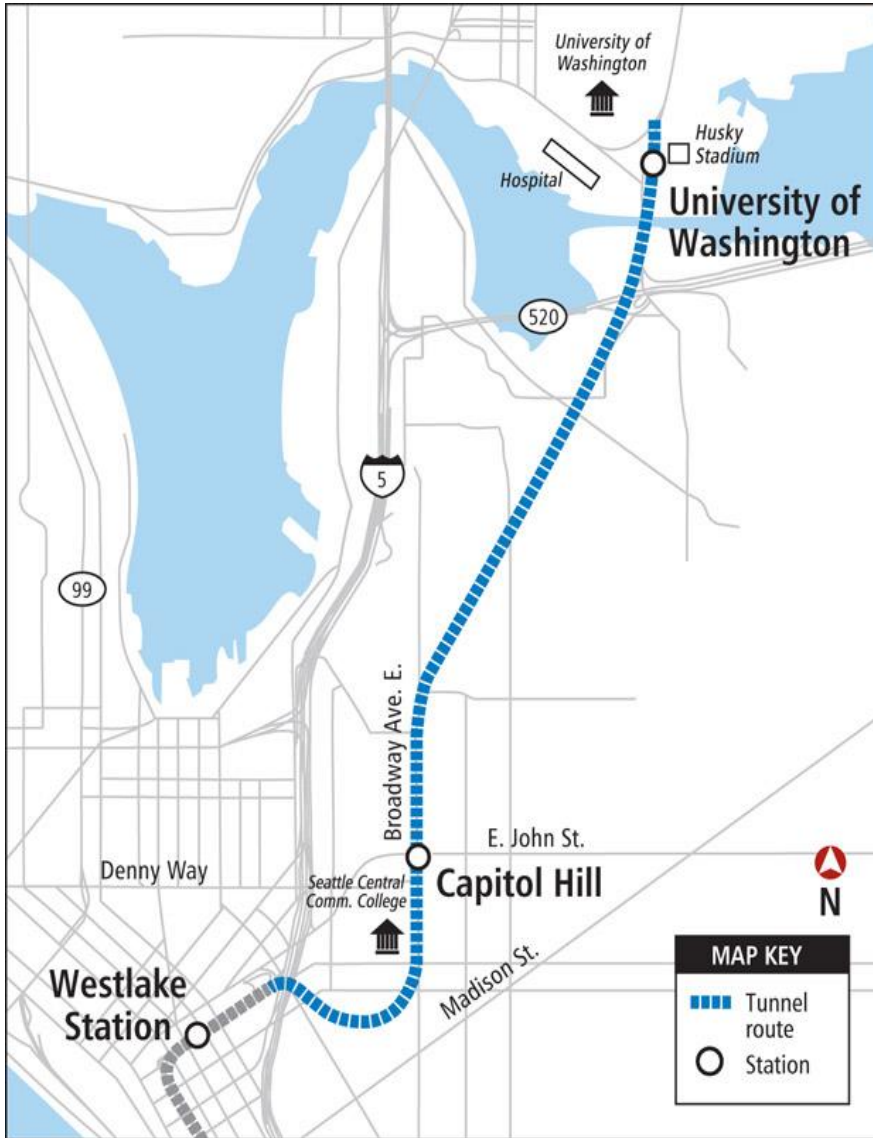


Sound Transit Northgate Link and University Link Updates

Capital Projects Office
April 18, 2013



University Link

- 3.15-mile extension of Initial Segment and Airport Link
 - Capitol Hill Station
 - UW Station and crossover
- Schedule:
 - Construction: 6 years
 - System testing: 6 months
 - Open for service: 2016
- Capital budget: \$1.78 billion
- Adds 70,000 daily riders, 114,000 riders system wide (2030)
- Train every 6 minutes (peak)
- 6 minutes (UW – Westlake)

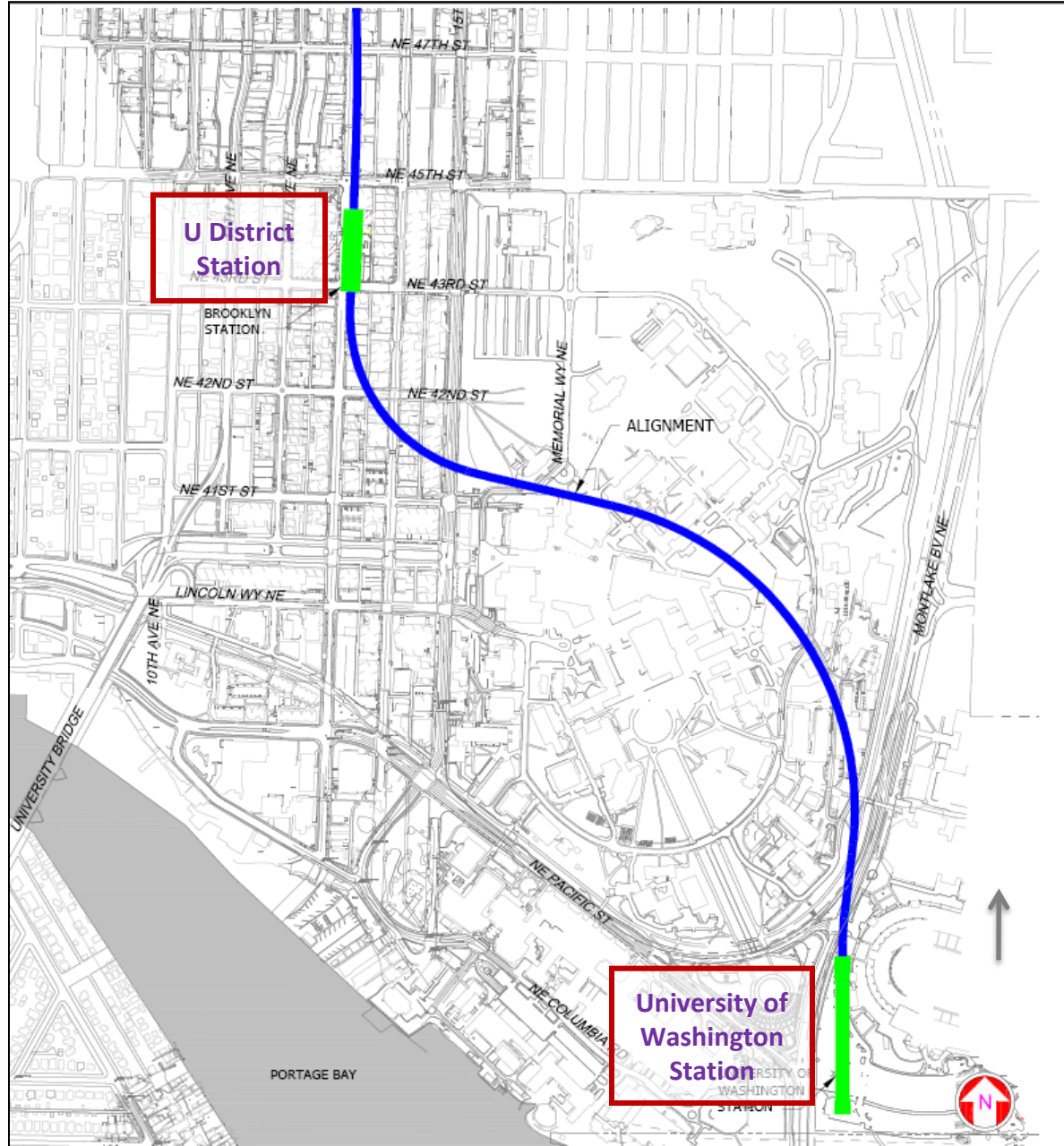


Northgate Link University of Washington to Northgate

- 4.3-mile light rail extension
- Stations at U District (Brooklyn), Roosevelt, and Northgate
- Open for Service : 2021
- Capital Budget \$2.1 billion
- 62,000 daily boardings added to system by 2030
- 14 minutes Northgate - Westlake

Tunnel Alignment

From the University of Washington Station to the U District Station



Sound Transit Timeline

University of Washington Station (at Husky Stadium)

- Construction - Complete Dec 2014
- Systems Installation - Complete Oct 2015
- Pre-Revenue Testing - Complete Apr 2016
- Revenue Service - Start Sept 2016

U District Station (at UW Tower)

- Demolish existing buildings - Start Apr 2013
- Station Construction - Start Jan 2014
- **Tunneling Under Campus - Start Nov 2015**
- **Tunneling Under Campus – Complete Apr 2016**
- Construction - Complete Jul 2020
- Systems Installation - Complete Sep 2020
- Pre-Revenue Testing - Complete Mar 2021
- Revenue Service - Start Sep 2021

Northgate Campus Communication Planning

- ST will be the main source for producing overall community outreach and communications
 - ❖ Web alerts
 - ❖ Community mailings
 - ❖ Signage
- Setting up regular progress updates for Tower occupants and will be open to all UW community
 - ❖ Progress /Alert boards in Tower lobby
- Web updates from multiple departments, ST, UW Tower, CPO, Transportation Services
- ST 24/7 hot line phone number for questions/complaints
 - ❖ Some issues may be UW related and ST will forward if they get them first
- Way finding around UW Tower and through construction will be focus for additional signage
- Regular management meetings with ST to set up plan ongoing



UNIVERSITY OF WASHINGTON STATION

UNIVERSITY LINK



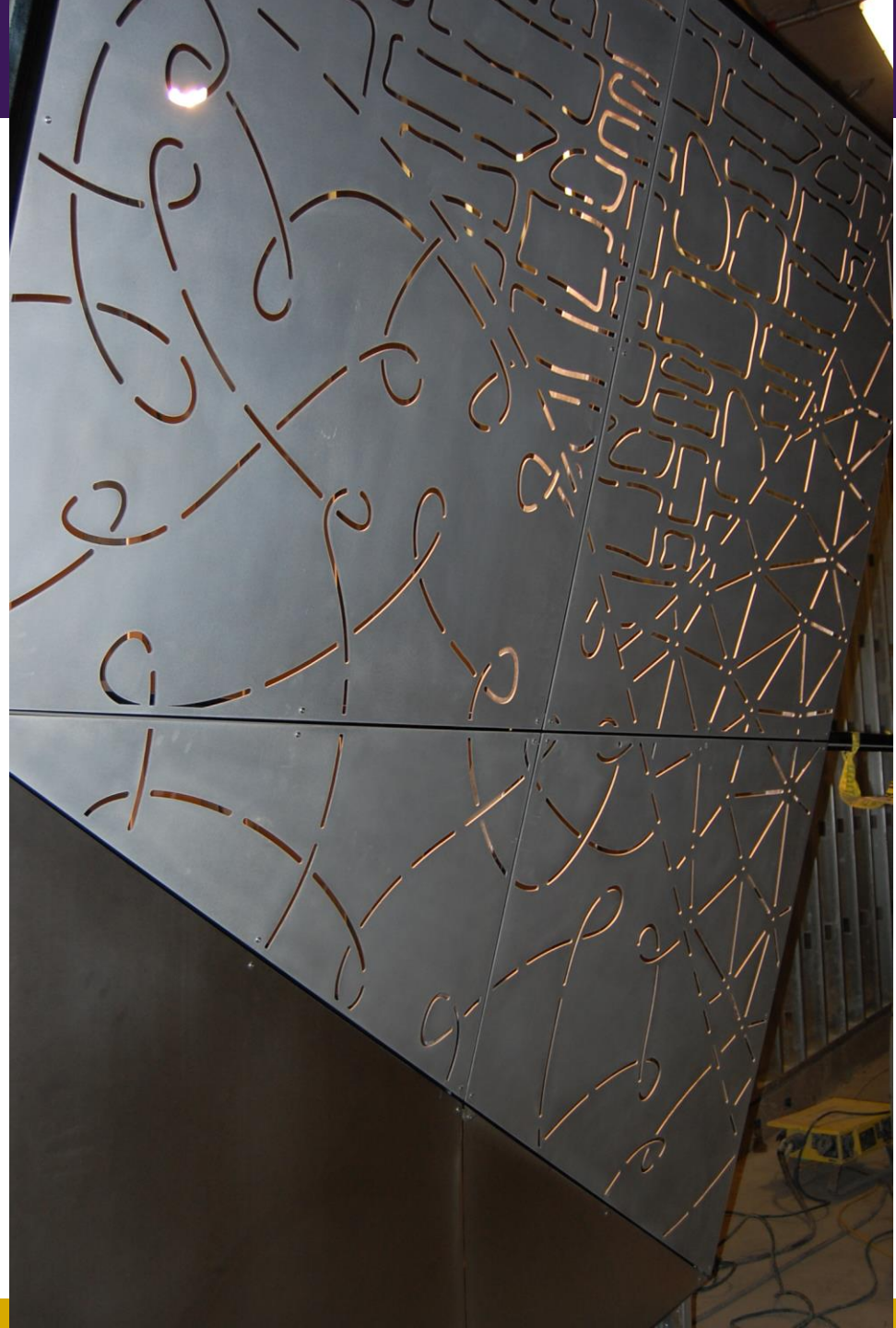


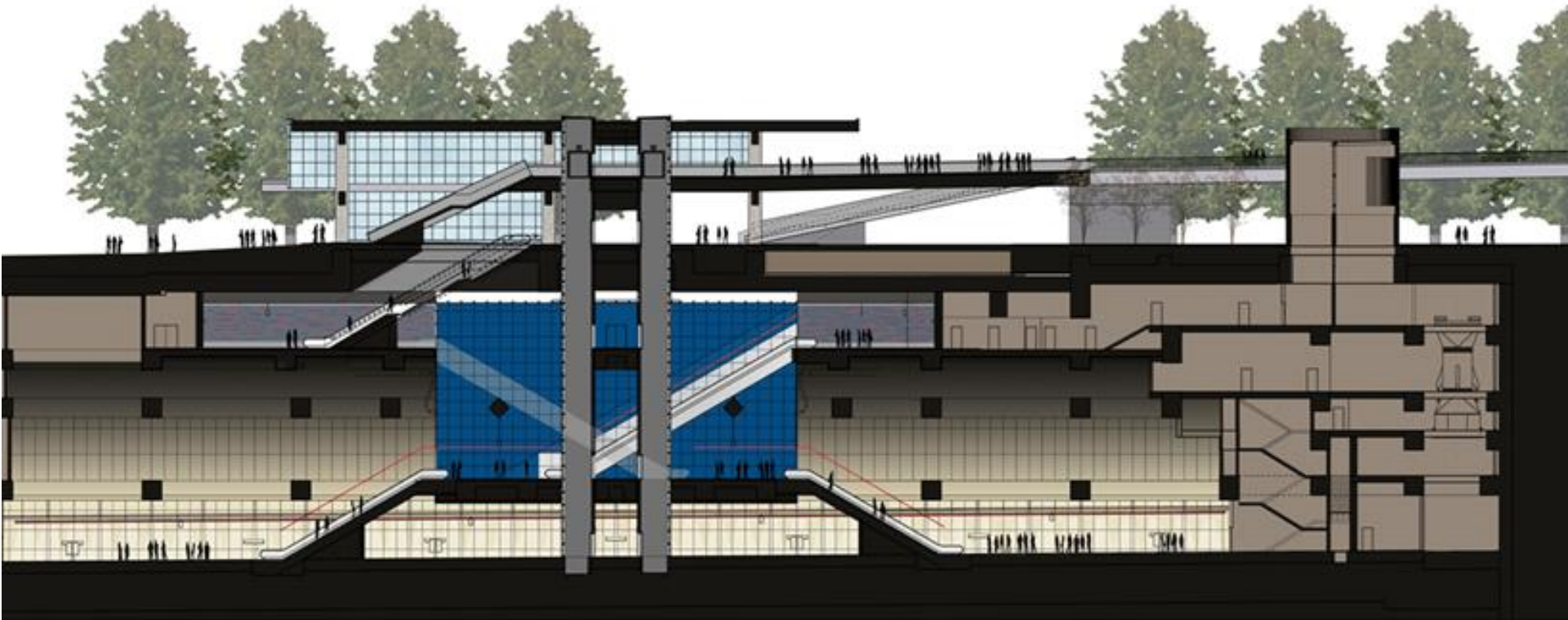
Escalators from
Surface to
mezzanine

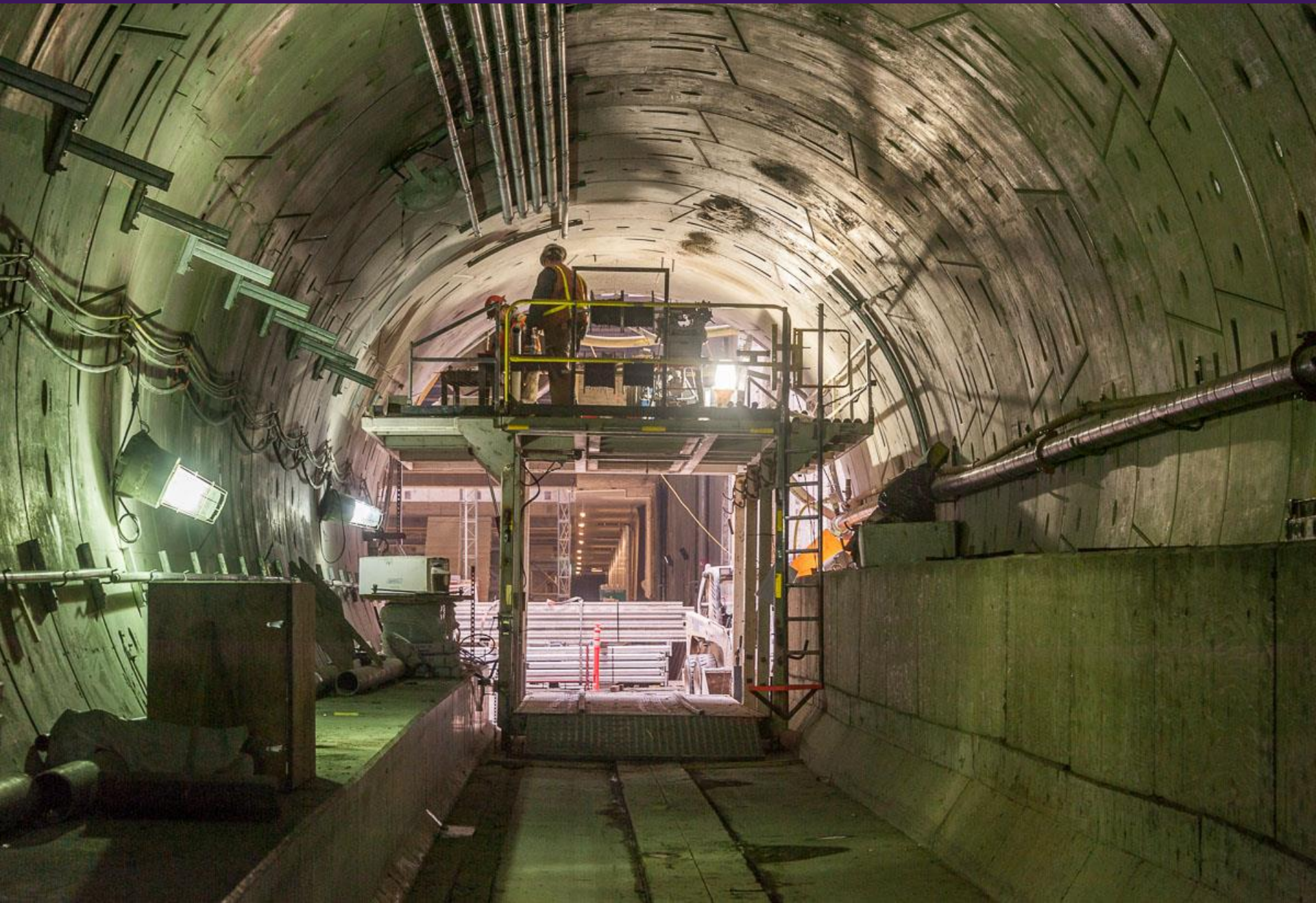




Escalator
Chamber artwork









Completed Cross Passage

- Connect
tunnels every
~700 feet



Questions?