

Odegaard  
Undergraduate  
Library  
*Project Review*

# SCHEDULE

Always.com

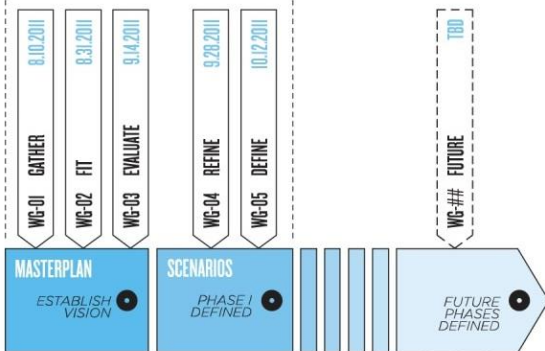
OCTOBER 14, 2011

MAY 2012

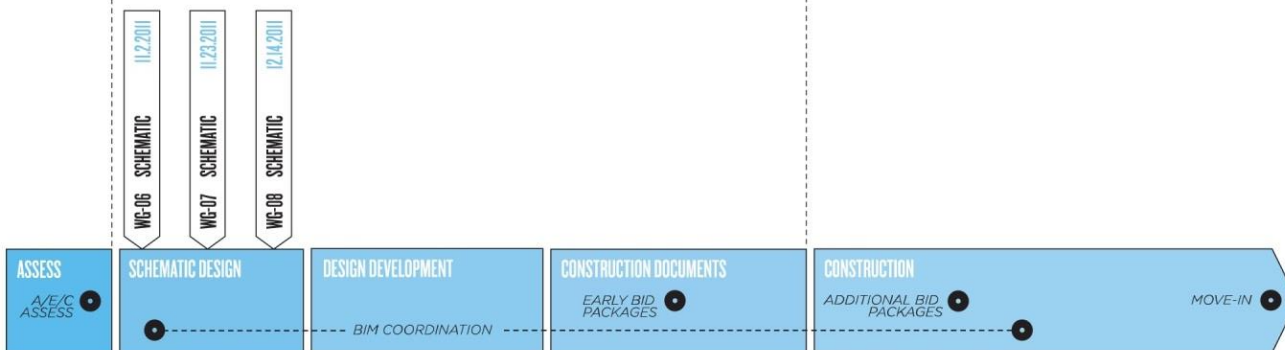
AUGUST 2013

SEPTEMBER 2013

PLANNING THE OLC OF THE  
**FUTURE**  
FULL BUILD-OUT



PLANNING THE OLC OF  
**TOMORROW**  
PHASE I

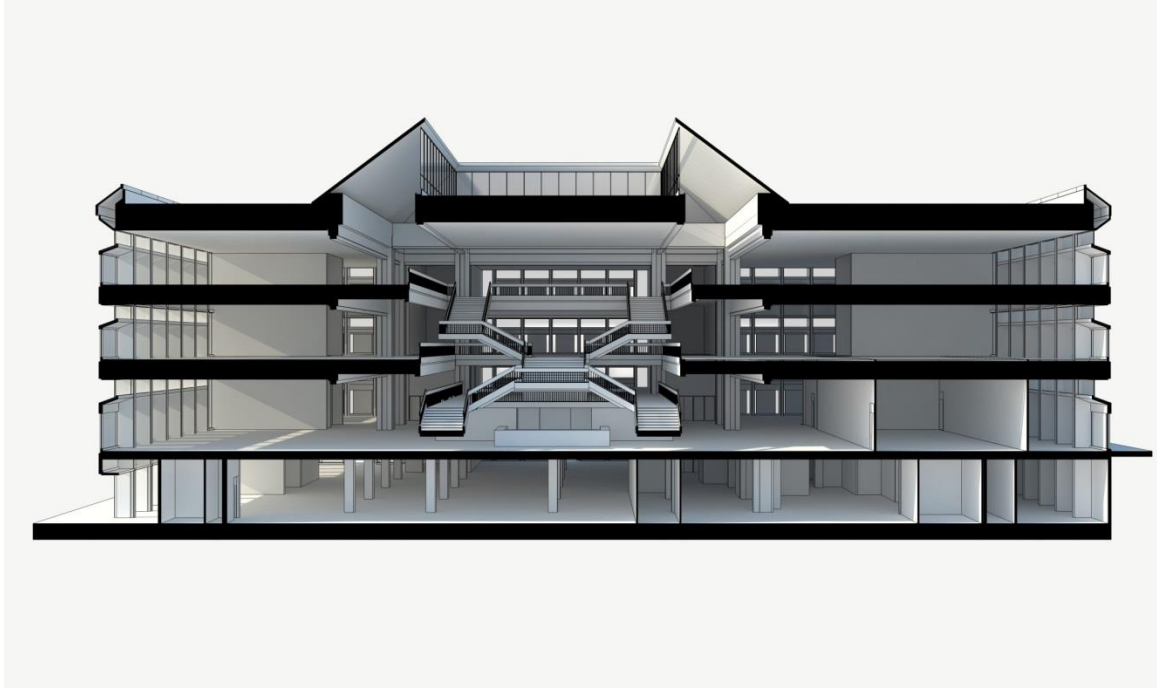


PLANNING THE OLC OF  
**TODAY**  
LIVING DURING CONSTRUCTION



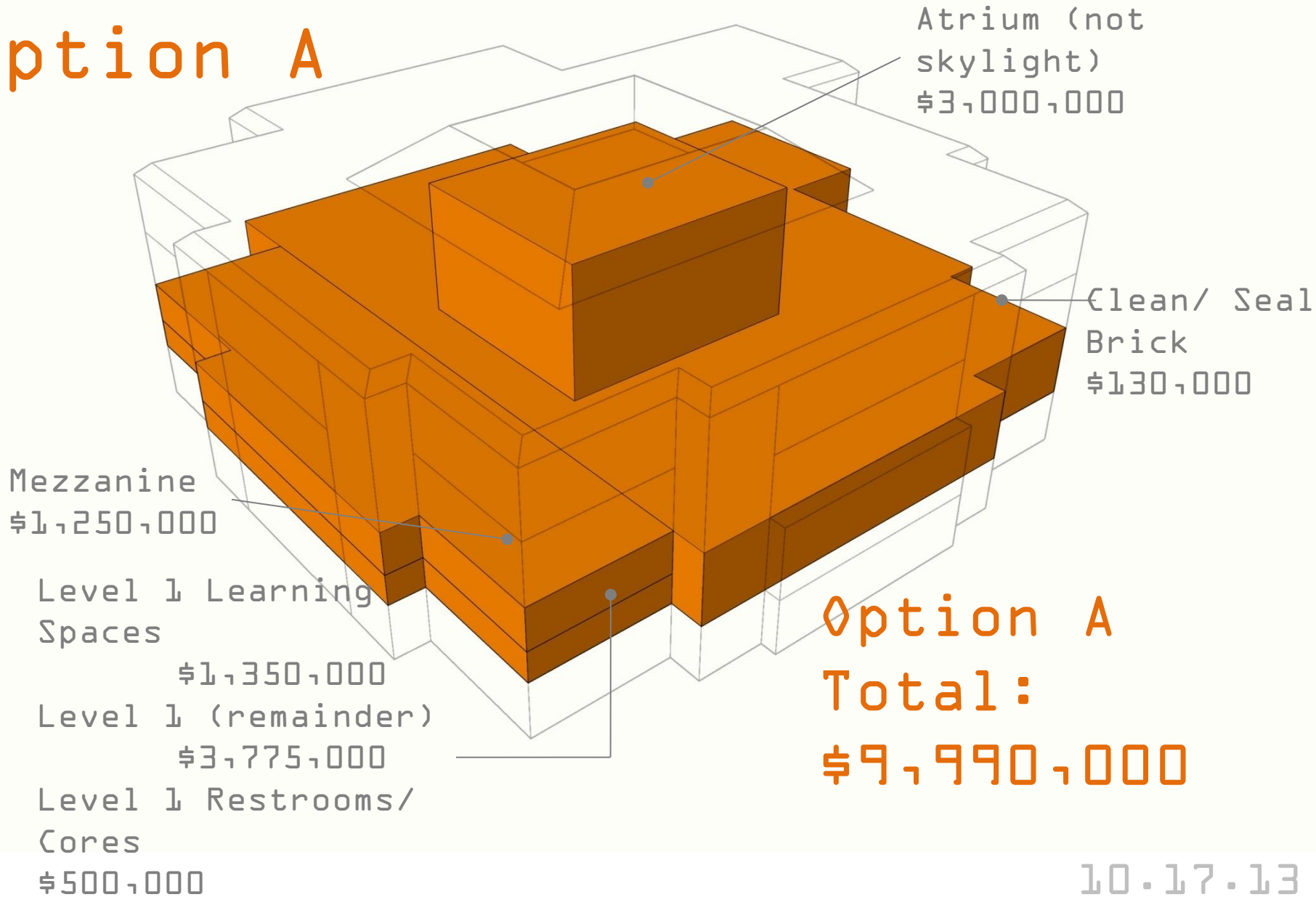
# PROJECT SCOPE

- master plan
- partial renovation
- flexible learning spaces
- optimize square footage
- group study/work rooms
- consolidate staff area



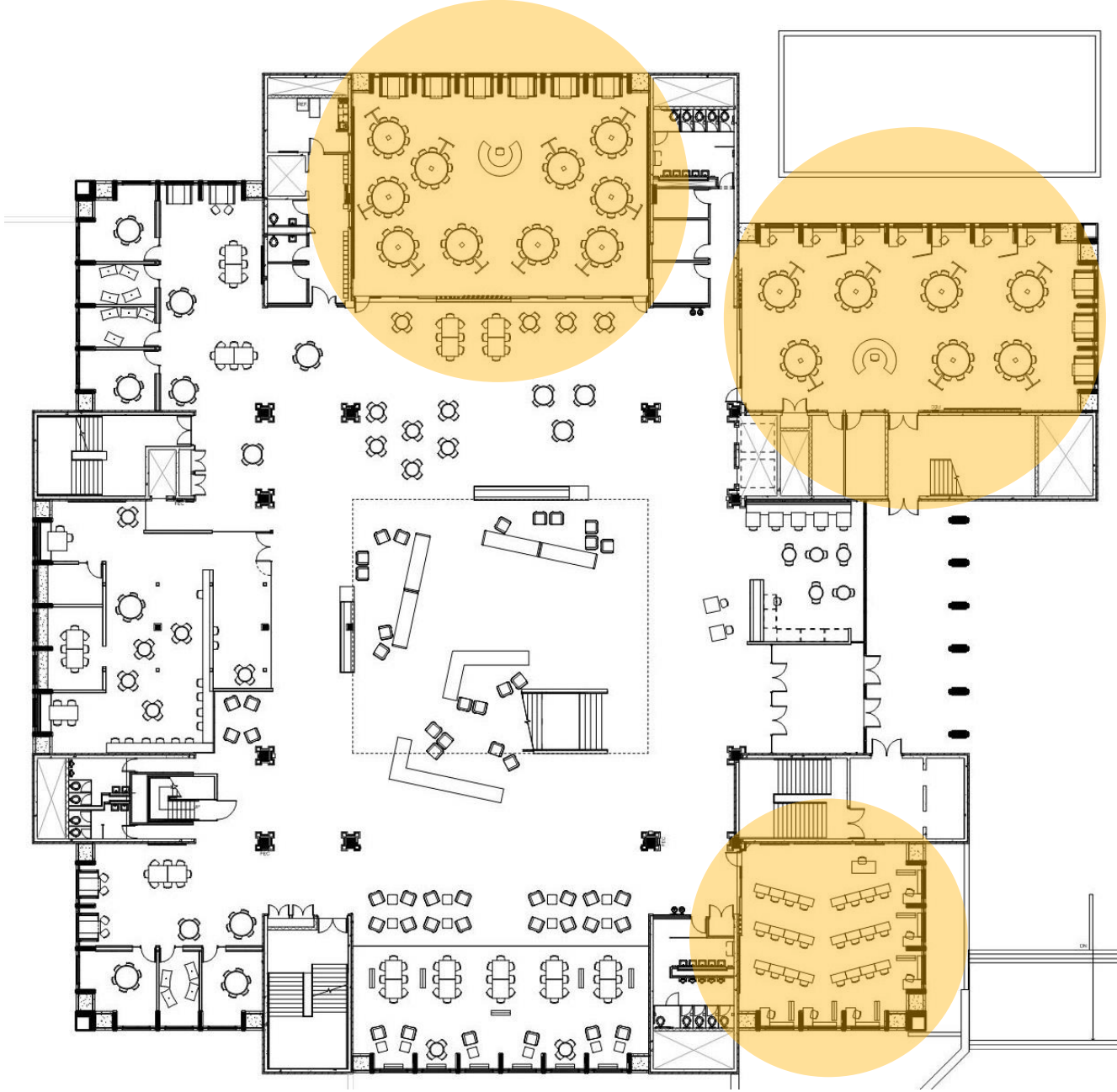
# Phasing Concepts:

## Option A

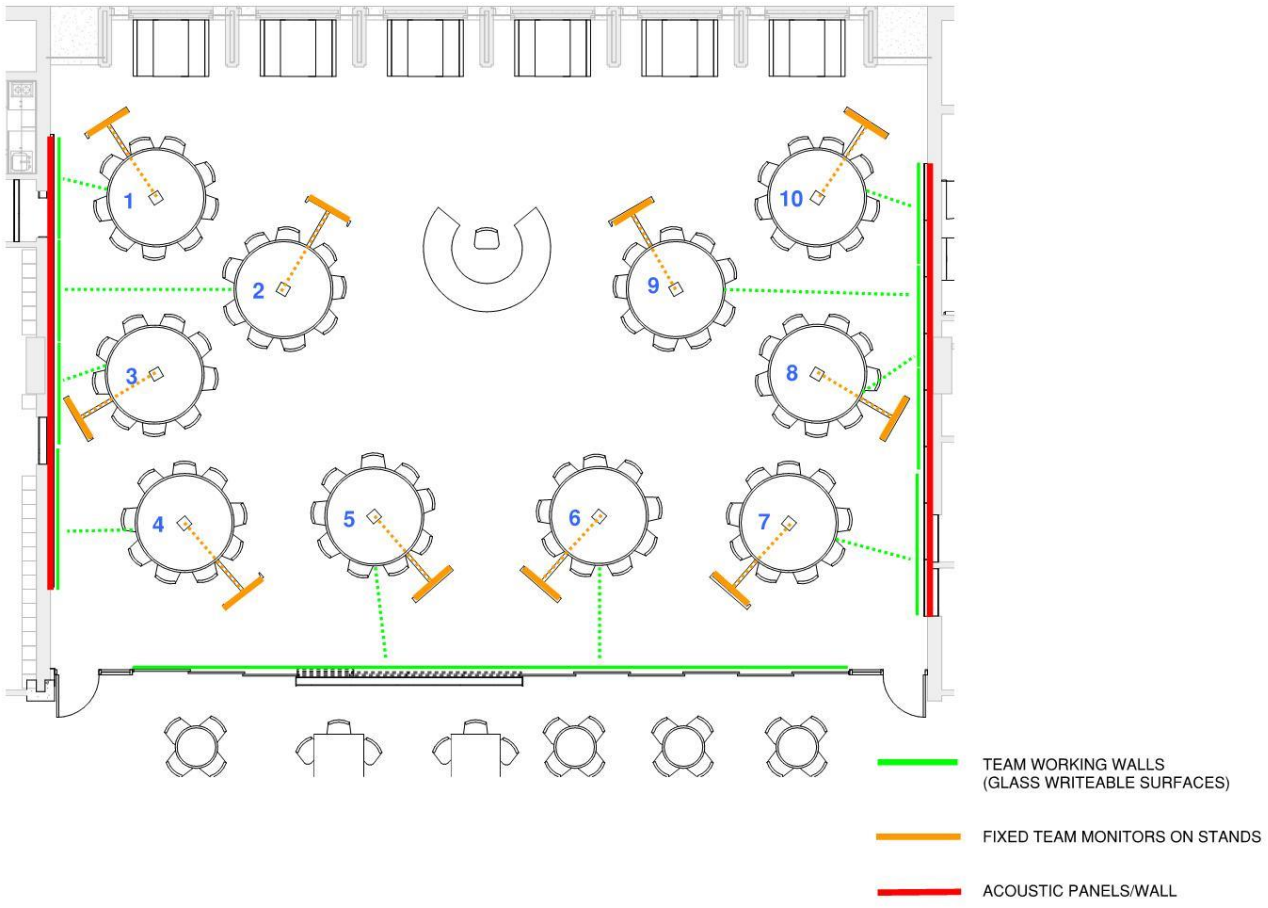


# LEARNING SPACES

ACTIVE LEARNING  
CLASSROOMS



# ACTIVE LEARNING CLASSROOMS



**ACTIVE LEARNING CLASSROOM 3**



ACTIVE LEARNING  
CLASSROOMS





ACTIVE LEARNING  
CLASSROOMS

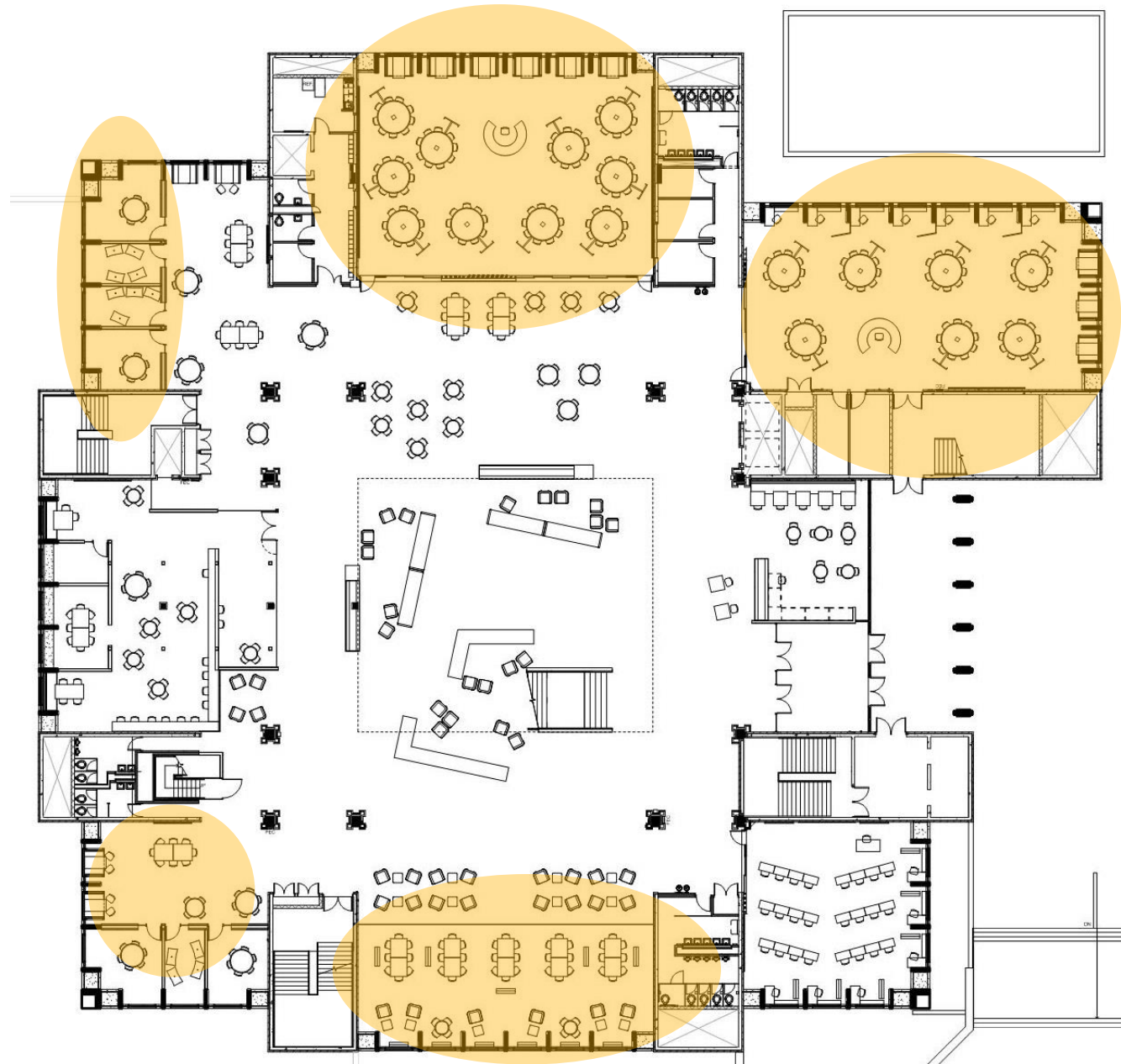




# ACTIVE LEARNING CLASSROOMS



# GROUP STUDY





# Group Study





# Group Study

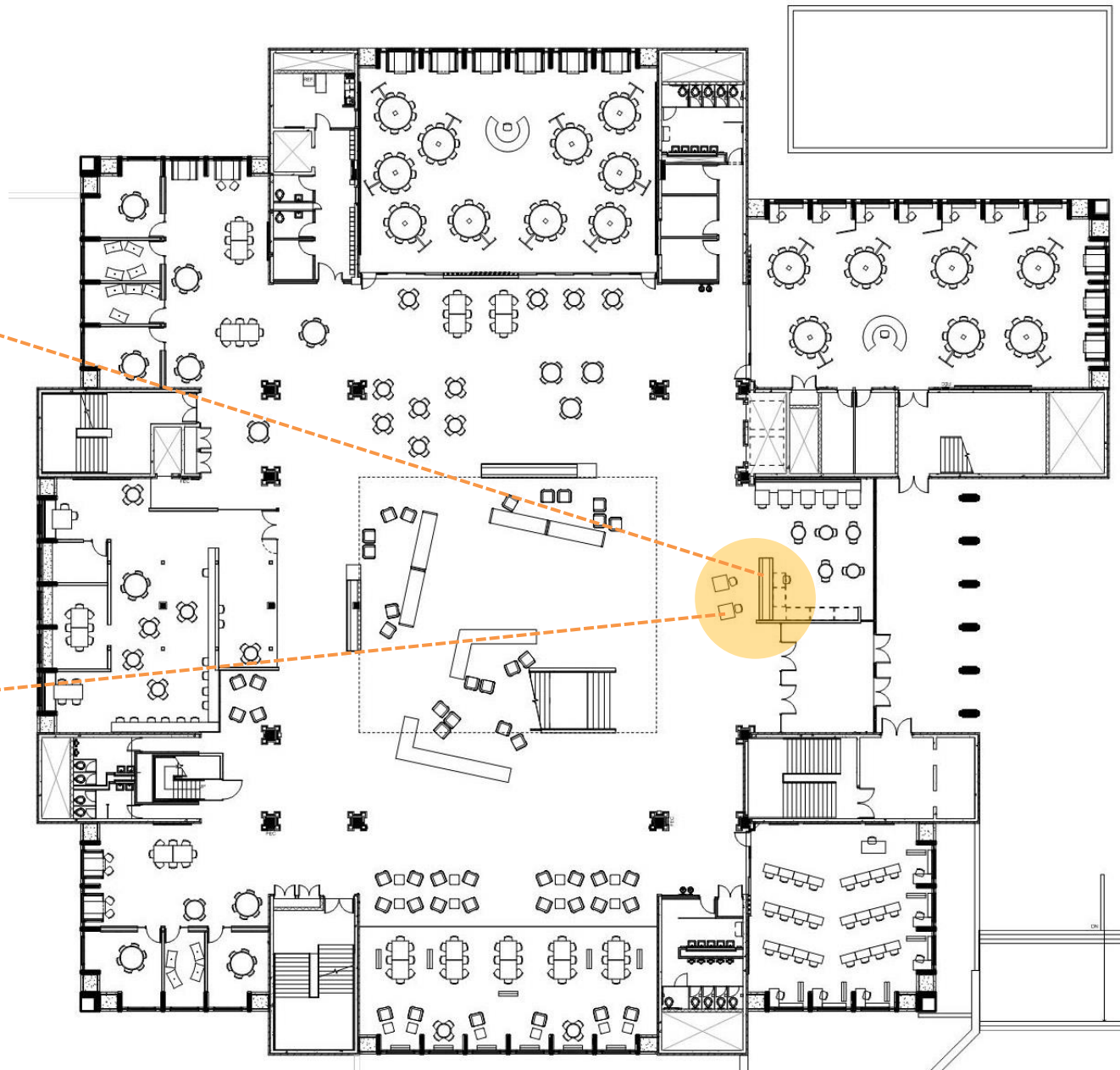




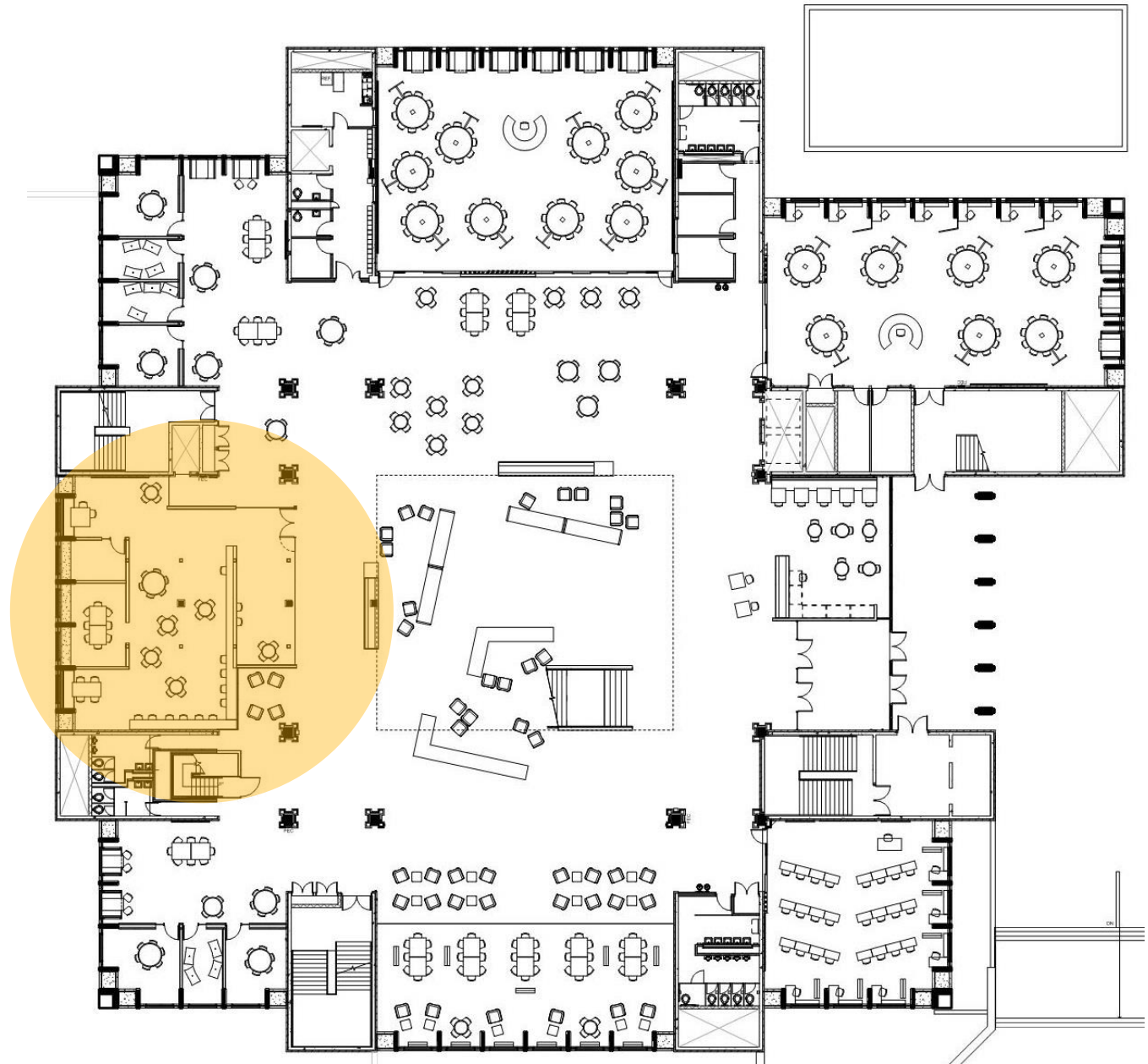
# STAFF/ CONSULTATION SPACES

STAFF AREAS -  
WELCOME  
BUILDING  
INFORMATION /  
SIGNAGE

HELP DESK /  
STATIONS



# STAFF AREAS - CONSULTATION





Consultation



FCUFS  
10.17.13



# Consultation



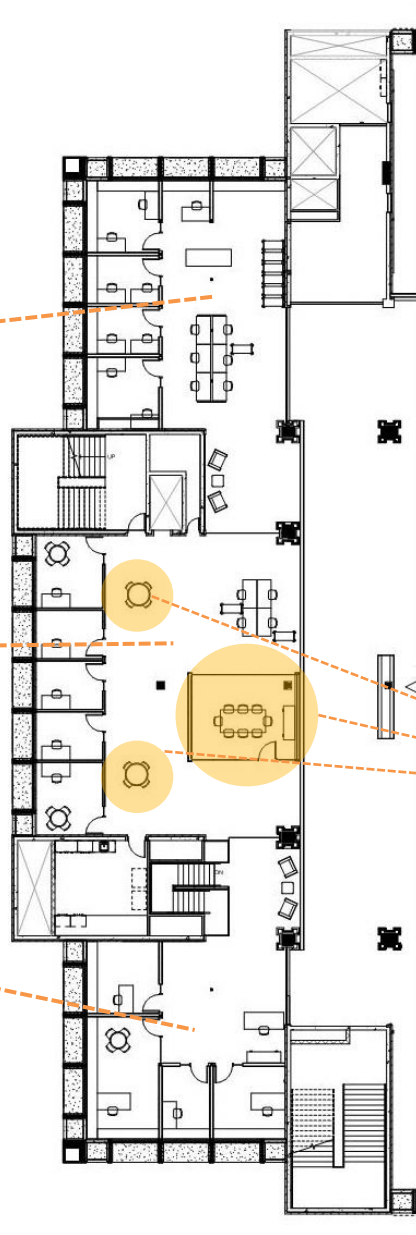


STAFF AREAS -  
MEZZANINE

ACCESS /  
COLLECTIONS

STAFF

ADMIN



ENCLOSED &  
INFORMAL  
MEETING AREAS

# Atrium

Atrium as 'The Heart'

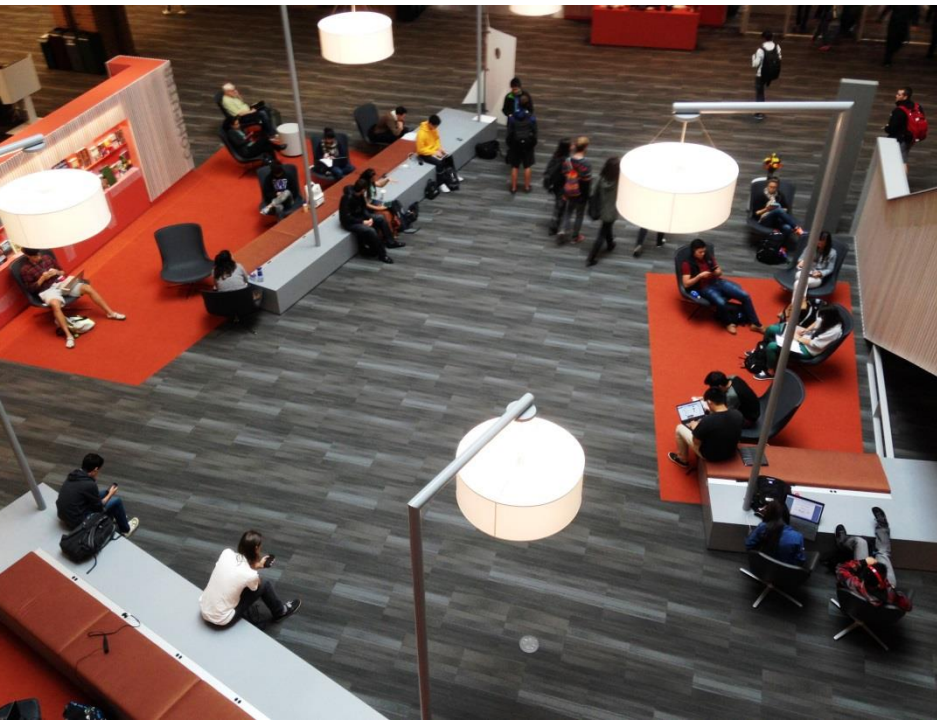
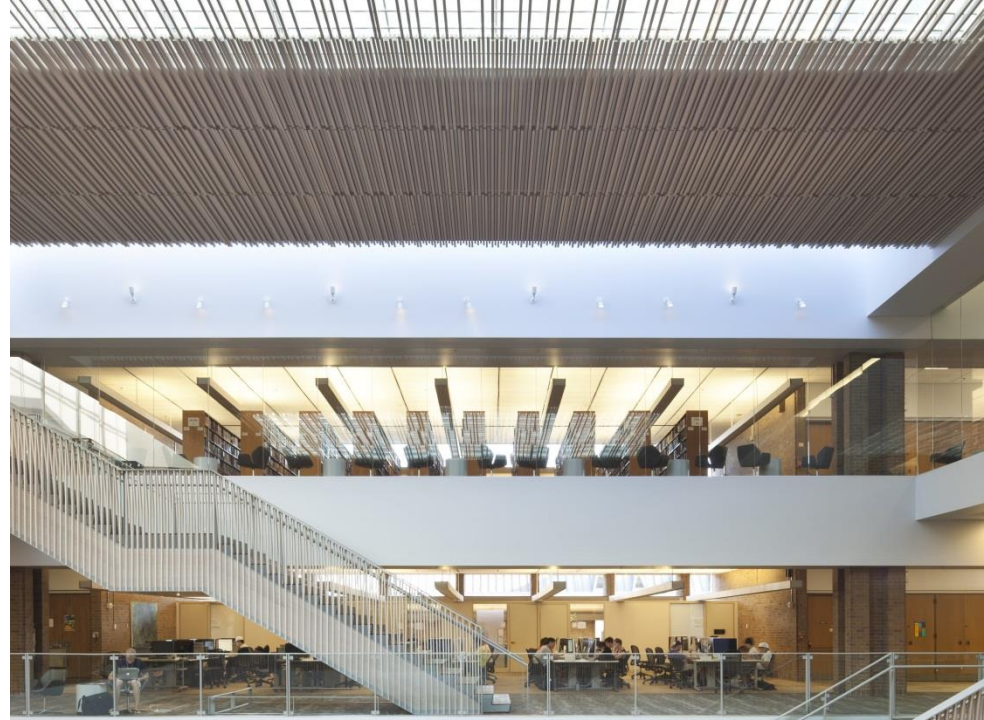
- create 'found' square footage
- epic insertion
- transient usage
- Make the 'quiet floor' actually quiet



FCUFS  
10.17.13



# Atrium















QUESTIONS?

FCUFS  
10.17.13