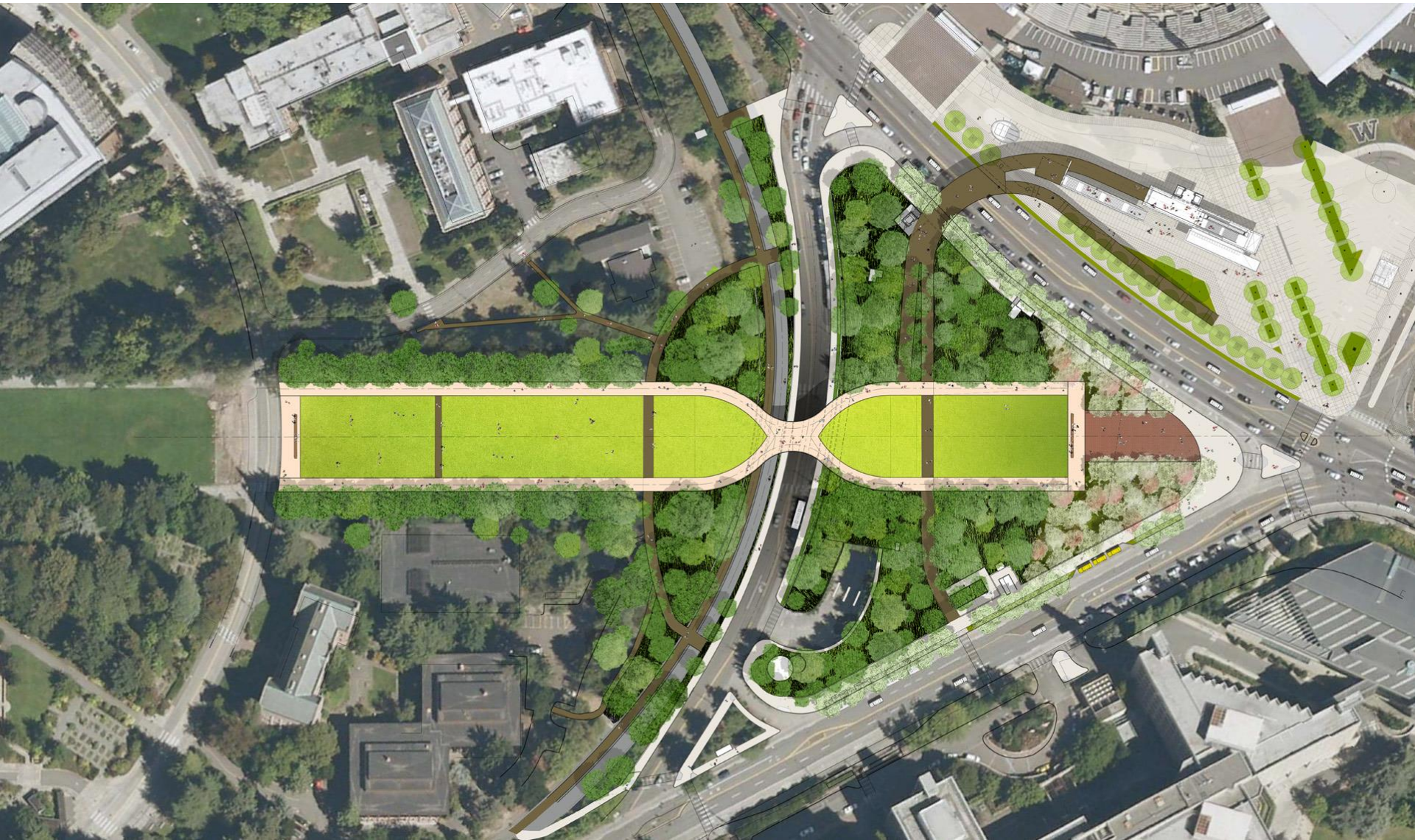


Montlake Triangle Project & Sound Transit

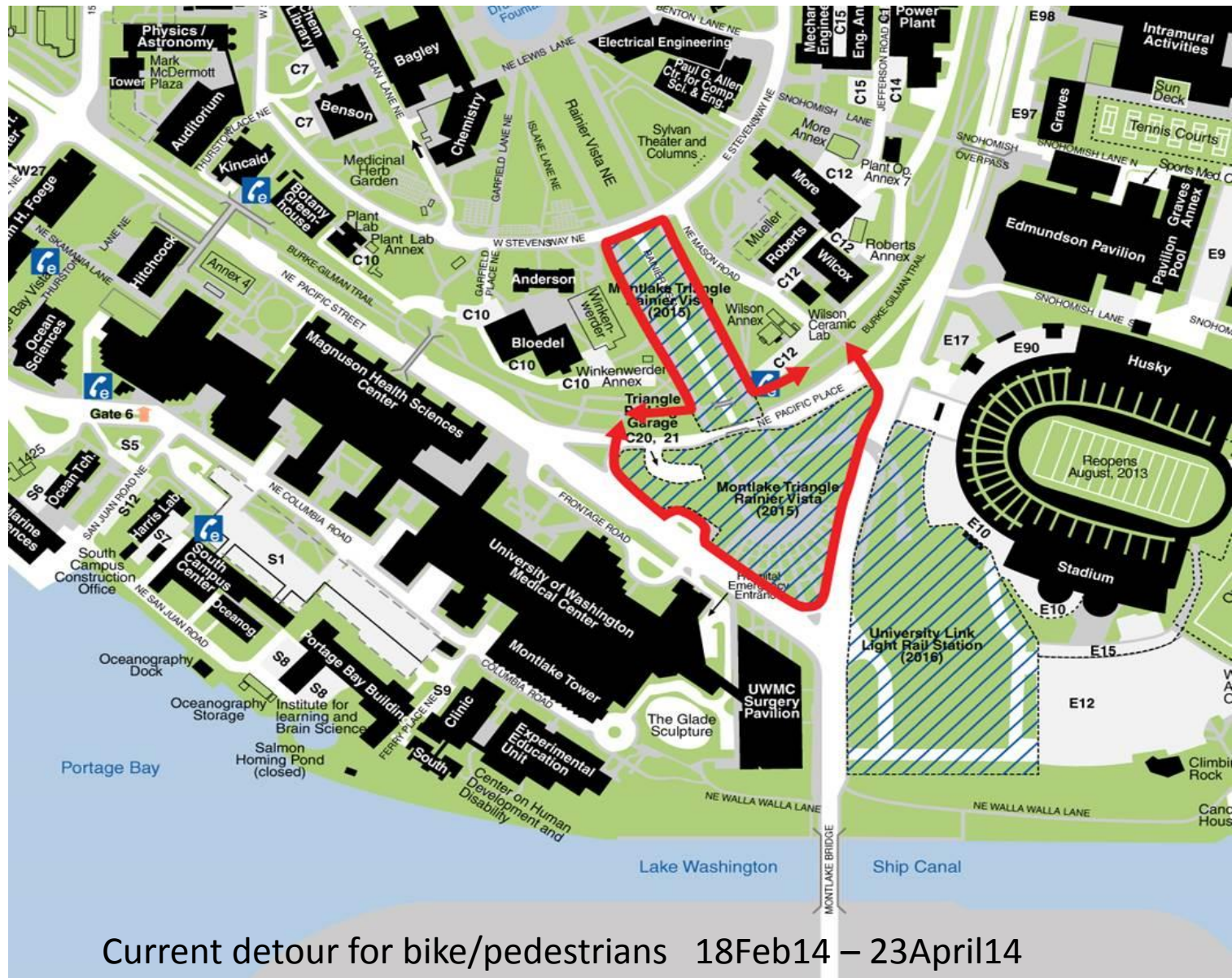
Construction Progress update

April 17, 2014

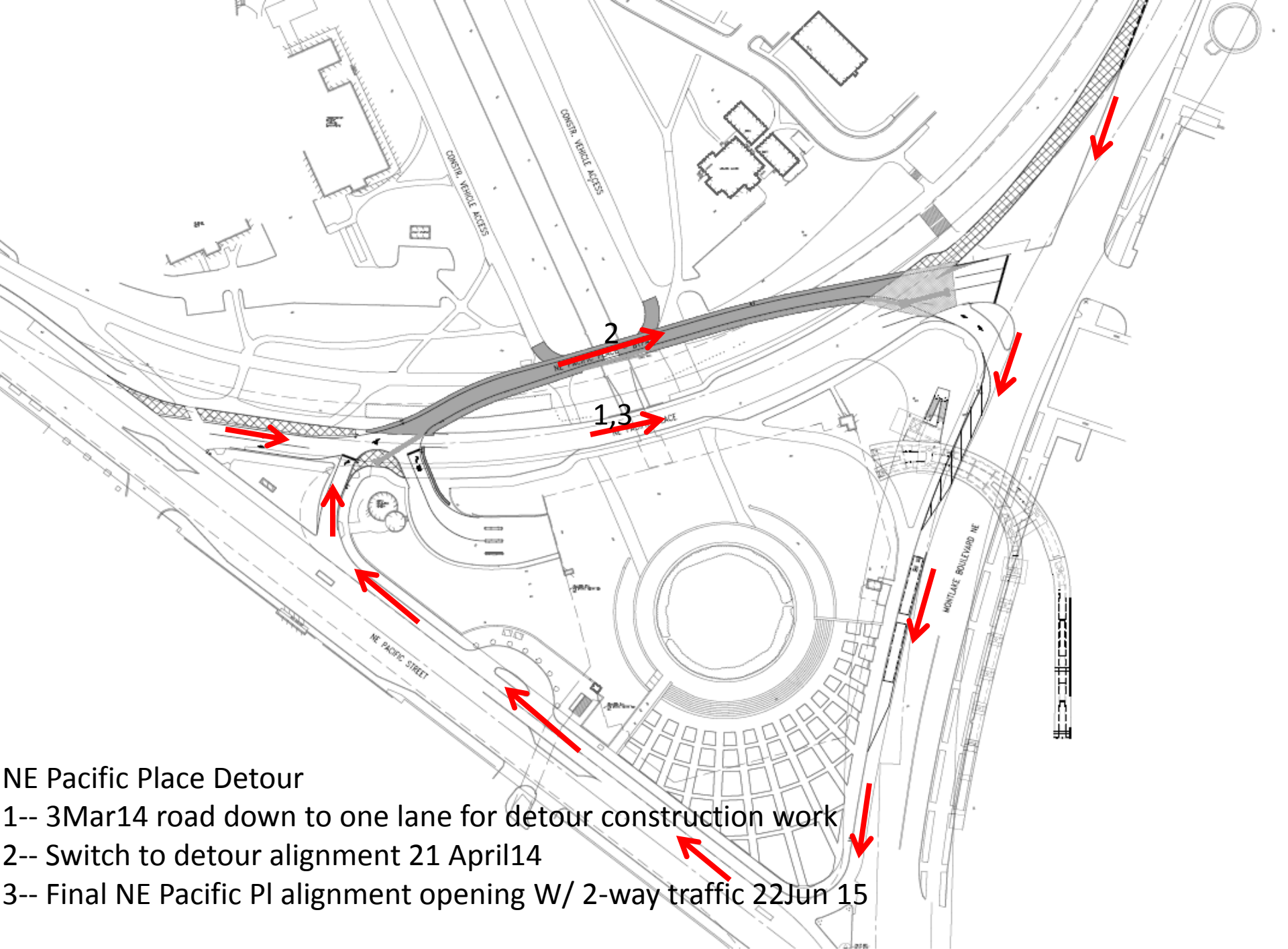








Current detour for bike/pedestrians 18Feb14 – 23April14



NE Pacific Place Detour

1-- 3Mar14 road down to one lane for detour construction work

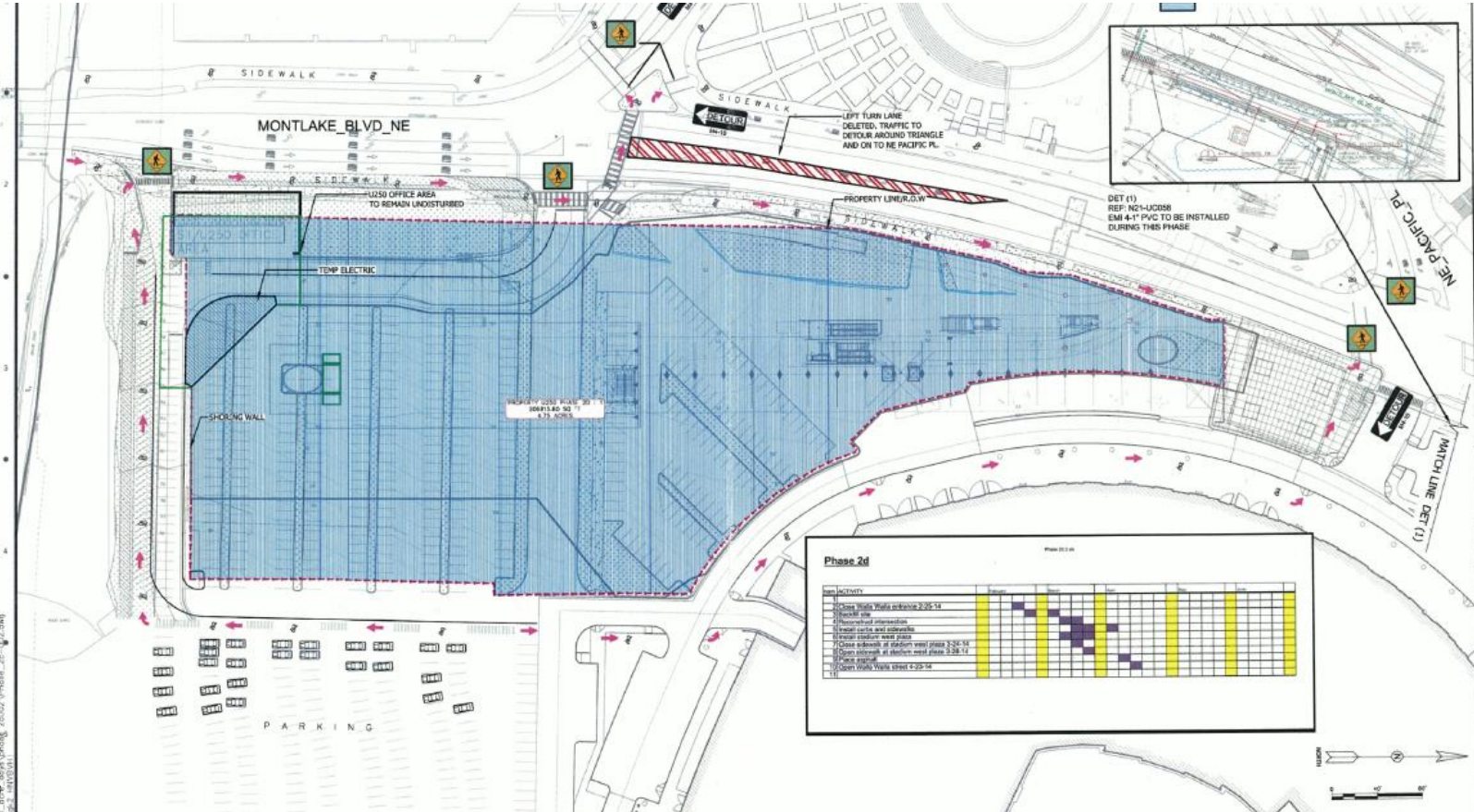
2-- Switch to detour alignment 21 April14

3-- Final NE Pacific Pl alignment opening W/ 2-way traffic 22Jun 15

MTP Milestones

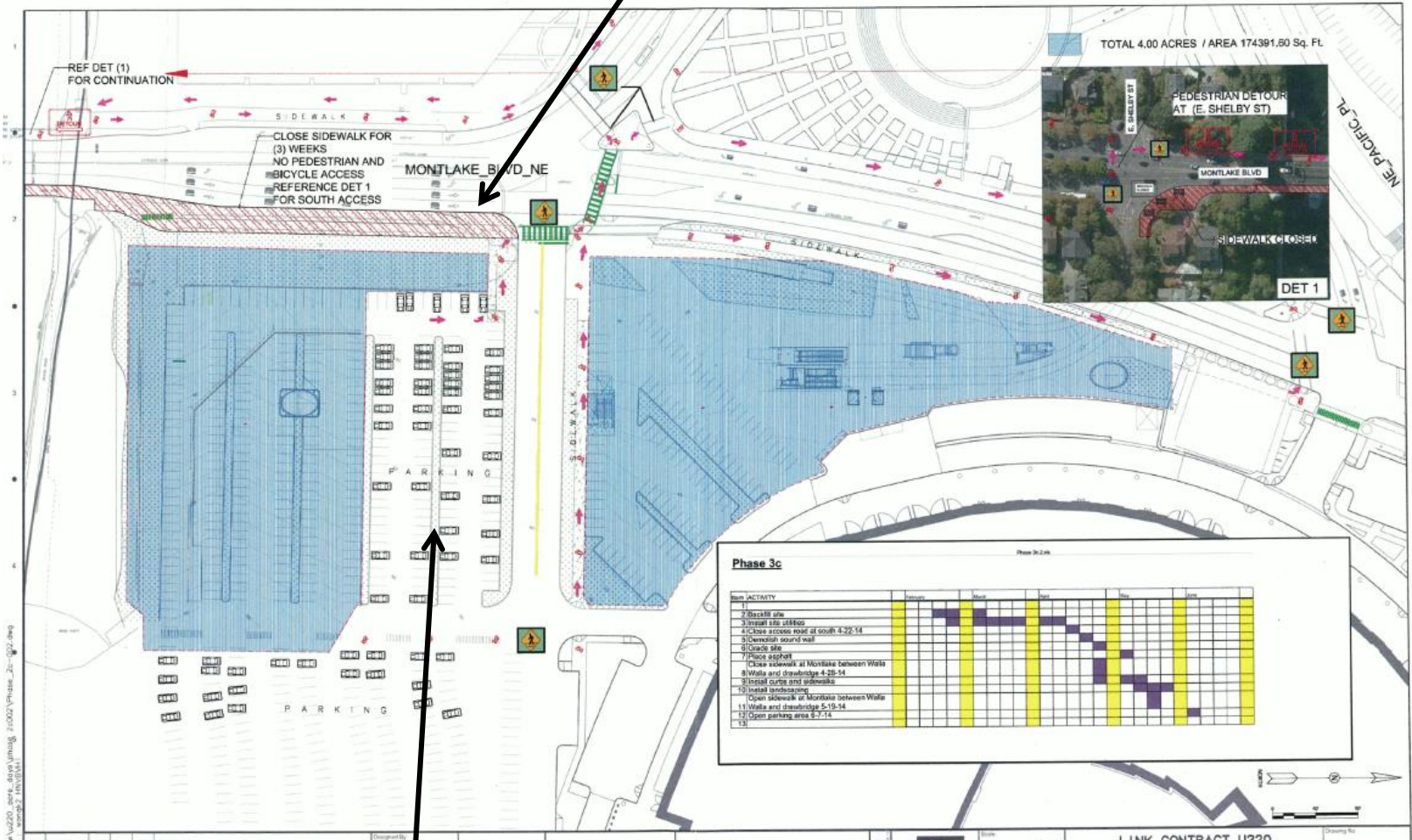
- 27 Jan 14 Start Construction
- 17 Feb 14 Detour BGT around Vista
- 16 April 14 Complete Triangle garage work
- 21 April 14 Detour NE Pacific Place onto bypass
- 23 April 14 Detour BGT onto Mason Road/Stevens Way
- 3 June 14 NE Pacific Place excavated down 18'
- November 2014 new Pedestrian bridge structurally complete
- April 2015 new NE Pacific Pl roadway complete
- June 2015 Project complete
- 1Q 2016 Light Rail operations start

ST Parking Lot E12 Restoration

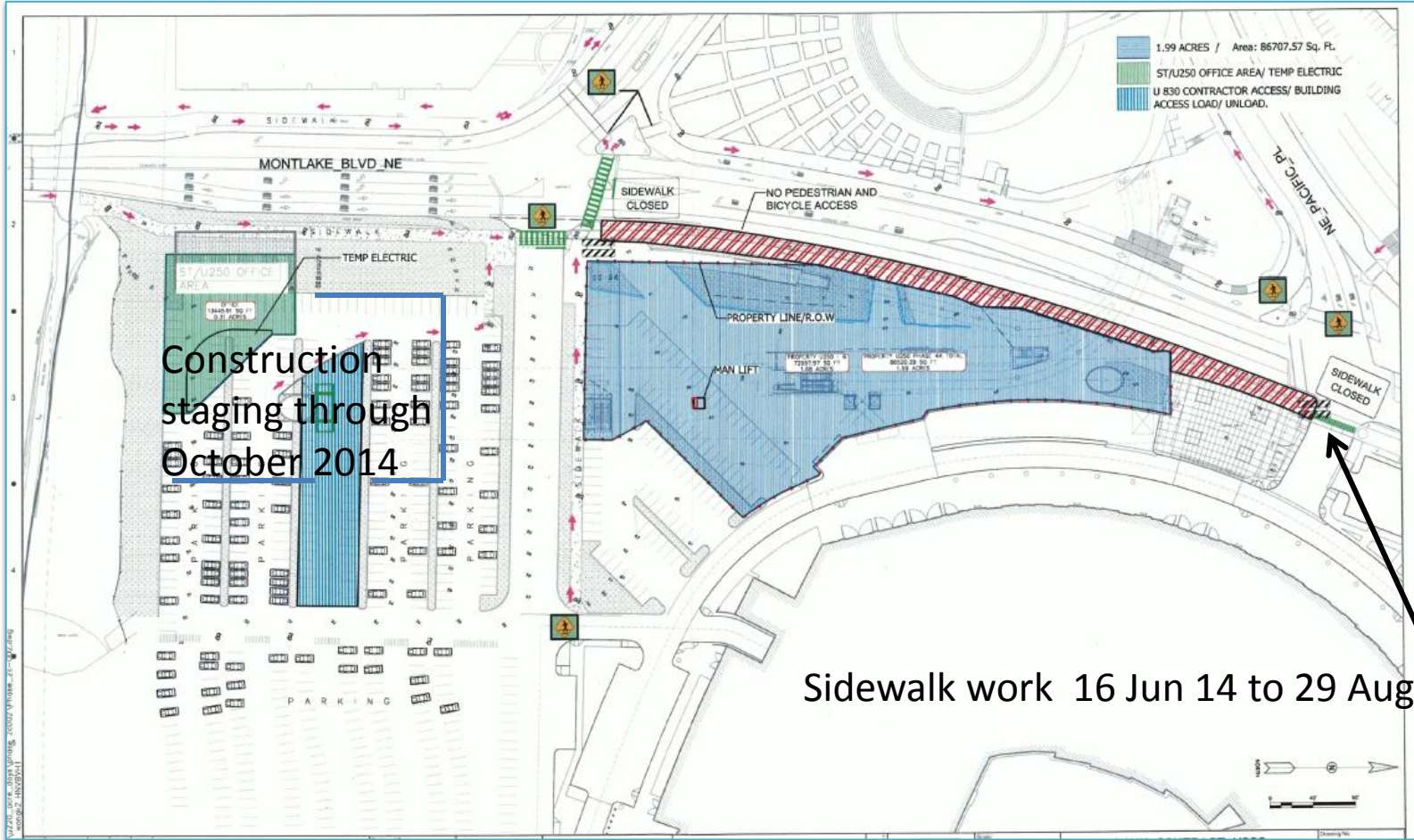


25 Feb 14 to 7 Jun 14

Sidewalk work 5 May 14 to 7 Jun 14



Partial South end E12 open 8 Jun14 to 29 Aug 14



Questions?