

# Fully Automated Robotic Vehicle with Real Time Image Detection and Collusion Avoiding Features

Al-Akhir Nayan\*  
Md. Obaidur Rahman\*  
Ahamad Nokib Mozumder\*  
Mohammad Abul Kashem\*\*

**Abstract:** *Due to the simplicity and capability to alter according to our requirements, the robotics and automation are being used widely in industries. The scheme is aimed to assemble an automatic vehicle by using GPS, which is depended on computer to generate its path coordinate. GPS module is utilized to collect GPS data. The mobile camera encounters the obstacles, machine learning algorithm assists to avoid it and performs real time object detection. The automobile uses the electric motors to spin wheels and has full control of the throttle, steering and breaking. An Arduino device pilots the vehicle following the instructions generated by the computer. Traffic has increased by quite a huge number. Excessive number of vehicles leads to large number of vehicle accidents every day. Driver issue is also a great difficulty. The ultimate goal of this work is to minimize the possibilities of accidents and to ensure the safety of the passengers. Thus, the vehicles will be useful for blind and handicraft people. But serving this device to the military is the main target so that they can get benefit at the time of danger. The motorized vehicle includes sensors to observe the surroundings. Besides, it can be managed by human beings, manually.*

**Index Term:** *Fully automated robotic vehicle, Collusion avoiding agent, Realtime image objects identification.*

## Introduction

Annually more than one million individuals die all over the world due to vehicle collision. According to the accident research, every year more than ten thousand people become injured or disabled in Bangladesh [1, 2]. It effects five to seven thousand crores (50 to 70 million Bangladeshi Taka) national losses yearly. 2% of national GDP is utilized behind road crash victims. Automated robotic vehicle can be a solution for this issue. In this article we have argued about some ways through which automated vehicle will change the situation.

Due to rough driving, illegal overtaking and drunk driving 1.25 million of people are killed all over the world yearly [3]. The automated vehicle never takes the illegal overtake. It follows the traffic rules. The automobile never gets angry or energy loss like a human driver. So, the vehicle ensures reliability of its travelers. Automatic vehicle is cheaper than a car. There is no

---

\*Lecturer, Department of Computer Science and Engineering, European University of Bangladesh, Dhaka, Bangladesh.

\*Associate Professor and Chairman, Department of Computer Science and Engineering, European University of Bangladesh, Dhaka, Bangladesh.

\*\*Professor, Department of Computer Science and Engineering, Dhaka University of Engineering & Technology, Gazipur.

cost for employing a driver. The motor vehicle can be operated for drive sharing like a taxi cab. It will be cost-effective. Government, like Bangladesh, has adopted strict rules in case of parking. Illegal parking causes high amount of penalty. The automated vehicle can be separated into small parts, and the user can fold it up. It can be kept in front of the door because it takes small space. This will require shorter space on road also. Thus, it will solve parking and space problem.

Arriving at long distance consumes a lot of time. If we evaluate our driving duration, we must get shocked. We have wasted a lot of time for driving. We could perform our official or other significant works easily within that time. The driverless automated vehicle will save time, and one can make the proper use of his driving time by doing important official work or reading.

Driving causes a lot of energy loss. Sometimes it causes bad impact on the health of the driver. Our proposed automated vehicle runs automatically following the guide and it will conserve the energy of its user. User can have sleep or can take rest while the vehicle will run.

Google planned to make the automatic car which will be used for personal and medical purpose. Google worked on it and made demo model of their car. They performed many test cases, and the car passed most of the cases.



**Fig. 1: Google Automatic Car**

Figure 1 is indicating a Google automatic car. The car is fantastic but it is expensive and people like Bangladesh are unable to purchase such a type of expensive automated car. That reason paved the way to work on it. We tried to make a model which will work like google automatic car but will be cheaper.

## **Related Works**

Self-sufficient vehicle development started in 1980s with projects such as the EUREKA Prometheus Project in Europe and the Automatic Land Vehicle Project of the United States. The DARPA Grand Challenges in 2004 and 2005 saw the exploration of a desert domain by groups of self-governing vehicles, while the 2007 Urban Challenge required a road-based

course and adherence to movement conventions [4]. The VisLab Intercontinental Automatic Challenge in Europe in 2010 included a self-governing drive from Italy to China following a pioneering vehicle. These rivalries saw gigantic field improvement, with cutting edge advancements effectively getting to be accessible for car use. Self-governing driving technology is rapidly developing for market use in the coming years. Google discovered that without human intercession their self-sufficient vehicles had driven 140,000 miles on open streets in the US [5].

During the last decade, aid frameworks for drivers have gradually become standard in new cars, but there was limited refinement. Toyota initially offered flexible travel control using a laser sensor in 1998. Most frameworks are insignificantly obtrusive and are outlined solely to widen the human driver's inadequacies. The eventual fate of this innovation is a notable guarantee for improving the well-being of the streets and is illustrated by Daimler's Exploration which offers novel usefulness, for example, the location of risky circumstances in roundabouts [6, 7].

The ability of self-sufficient cars started to be developed and investigated, with events such as the automatic Audi TTS at Stanford University, which was able to execute and also qualified hustling drivers. This activity is particularly notable as its points are like our role in using electronic control mechanisms to push the mechanical capabilities of the auto "at the breaking points." Using a new suite of track sensors, the auto drive mind has been boggling, long (20 km) race tracks.

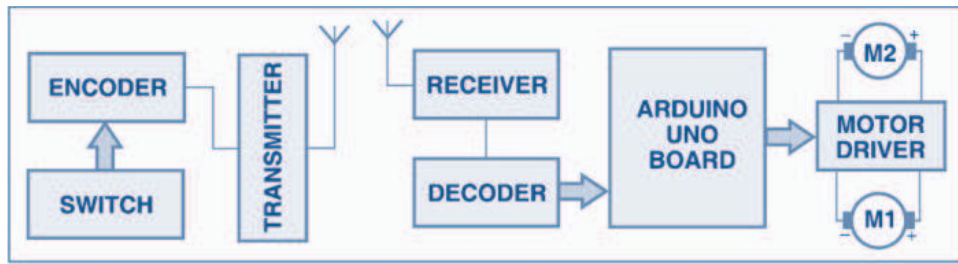
## **Research Methodology**

### **Arduino Programming Language**

Arduino programs are written in the Arduino Integrated Development Environment (IDE). Arduino IDE is a special software running on one's system that allows one to write sketches (synonym for program in Arduino language) for different Arduino boards. The Arduino programming language is based on a very simple hardware programming language called processing, which is similar to the C language. After the sketch is written in the Arduino IDE, it should be uploaded on the Arduino board for execution.

### **Proposed Circuit Description**

The vehicle's block diagram is shown at Fig. 2. It has two main sections: (a) transmitter (b) receiver and driver of engine. The transmitter circuit (Fig. 2) consists of the IC HT12E (IC1) encoder, the 433MHz RF transmitter module (TX1) and a few discrete components. The receiver and motor driver circuit are built with the Arduino UNO board, IC decoder HT12D (IC2), 433MHz RF receiver module (RX1), IC L293D (IC3) motor driver, IC 7805 (IC4) regulator and a few discrete components.



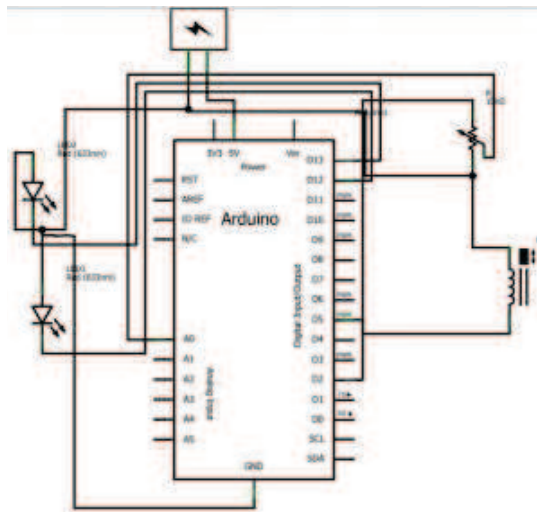
**Fig. 2: Block diagram of Arduino-based RF controlled robot**

## Arduino Board

The Arduino Uno is an open-source microcontroller board based on the Microchip ATmega328P microcontroller developed by Arduino.cc. The board is equipped with sets of digital and analog input/output (I/O) pins that may be interfaced to various expansion boards and other circuits. The board has 14 digital I/O pins, 6 analog I/O pins, and is programmable with the Arduino IDE (Integrated Development Environment), via a type B USB cable. It can be powered by the USB cable or by an external 9-volt battery, though it accepts voltages between 7 and 20 volts. The short description of the components has been shown in Table 1 [8].

**Table 1: Components in Arduino Board**

Component name	Configuration
Microcontroller	ATmega32u4
Operating Voltage	5V
Input Voltage	5V through flat cable
Digital I/O Pins	5
PWM Channels	6
Analog Input Channels	4 (of the Digital I/O pins)
Analog Input Channels (multiplexed)	8
DC Current per I/O Pin	40 mA
Flash Memory	32 KB (ATmega32u4) of which 4 KB used by boot loader
SRAM	2.5 KB (ATmega32u4)
EEPROM (internal)	1 KB (ATmega32u4)
EEPROM (external)	16 MHz
Clock Speed	16 MHz
Keypad	5 keys
Knob	potentiometer attached to analog pin
Full color LCD	over SPI communication
SD card reader	for FAT16 formatted cards
Speaker	8 Ohm
Digital Compass	provides deviation from the geographical north in degrees
I2C soldering ports	3
Prototyping areas	4
Radius	185 mm
Hight	85 mm

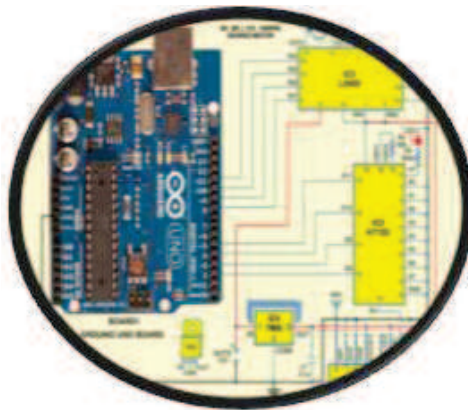


**Fig.3: Arduino Uno with Digital Input/output**

## Remote Control

An encoder decoder pairs (HT12E and HT12D) with a transmitter-receiver pair is used to monitor the robot from afar. The 433MHz transmitter-receiver pair with the encoder-receiver pair is proposed here. The encoder decoders are CMOS ICs with a working voltage range between 2.4V and 12V. The encoder has 12 lines (8-address lines & 4-address / data lines) that are transmitted serially when the activate pin is transmitted low. On OUT pin the output data appears serially.

The transmitted data consists of differing lengths of pulses for '1' and '0' which is of positive going. The '0' pulse width is of twice that of '1' pulse width. The address part of the data received on A0 through A7 pins four times in succession is done, only then valid transmission pin is taken high. The internal oscillation frequency of decoder HT12D is 50 times more than the encoder HT12E. The data on address pins AD8-AD11 of HT12E appears on pins D8-D11(data lines) of HT12D, the device acts as receiver of 4-bit data with 8-bit addressing.



**Fig. 4: Receiver and Motor driver Circuit**

Transmitter: To set the transmitter frequency, the resistor R1 is connected between the oscillator pins 15 and 16. The S1, S2, S3 and S4 switches are interfaced with the HT12E encoder for forward, reverse, left and right motions respectively.

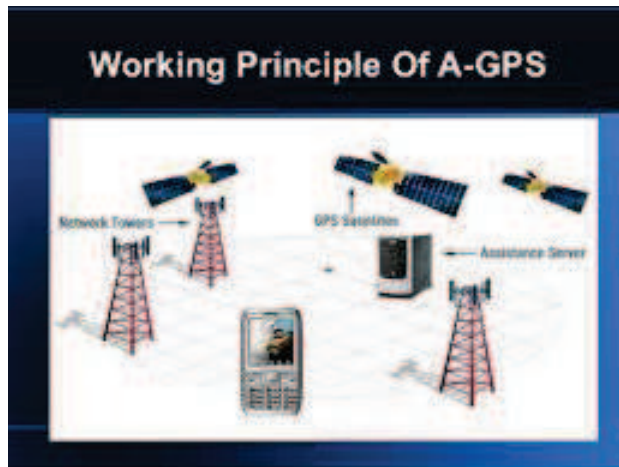
## GPS

GPS satellites circle the Earth twice a day in a precise orbit. Each satellite transmits a unique signal and orbital parameters that allow GPS devices to decode and compute the precise location of the satellite. GPS receivers use this information and trilateration to calculate a user's exact location. Essentially, the GPS receiver measures the distance to each satellite by the amount of time it takes to receive a transmitted signal. With distance measurements from a few more satellites, the receiver can determine a user's position and display it electronically to measure your running route, map a golf course, find a way home or adventure anywhere. To calculate 2-D position (latitude and longitude) and track movement, a GPS receiver must be locked on to the signal of at least 3 satellites. With 4 or more satellites in view, the receiver can determine 3-D position (latitude, longitude and altitude). Generally, a GPS receiver will track 8 or more satellites, but that depends on the time of day and where the receiver is at that moment on the earth [9].

Once such position has been determined, the GPS unit can calculate other information, such as speed, bearing, direction, distance to the destination, time to sunrise and sunset and more.

GPS receivers are extremely accurate, thanks to their parallel multi-channel design. Our receivers are quick to lock onto satellites when first turned on. They maintain a tracking lock in dense tree-cover or in urban settings with tall buildings. Certain atmospheric factors and other error sources can affect the accuracy of GPS receivers. Garmin GPS receivers are typically accurate to within 10 meters. Accuracy is even better on the water.

Some Garmin GPS receiver accuracy is improved with WAAS (Wide Area Augmentation System). This capability can improve accuracy to better than 3 meters, by providing corrections to the atmosphere. No additional equipment or fees are required to take advantage of WAAS satellites. Users can also get better accuracy with Differential GPS (DGPS), which corrects GPS distances to within an average of 1 to 3 meters. The U.S. Coast Guard operates the most common DGPS correction service, consisting of a network of towers that receive GPS signals and transmit a corrected signal by beacon transmitters. In order to get the corrected signal, users must have a differential beacon receiver and beacon antenna in addition to their GPS [10].



**Fig. 5: Working Principle of GPS**

We got the current position using the GPS of our smartphone and then we used the Google Earth coordinates to run the car according to the desired route.

## **Working Principle**

### **Video acquisition**

Various camera mounted on the car offer RGB frames in real time. The Compiled program collects the frames (RGB) from the camera at regular trigger intervals that are set at a given frame rate. Performance and precision depend on the fps and refresh rate.

### **Pre-processing**

To apply thresholding algorithms [11], the obtained images are converted to GRAY scaled images, and then to binary images. After that specific noise reduction algorithms are implemented including median and Gaussian filtration techniques [12]. Morphological functions are eventually applied to binary frames so that no noise can present in them.

### **Detection of Objects**

Red layered matrix is transferred to circle finding functions that identify the road symbols that appear on the way. Such objects are positioned and are circled and compared to the path matrices which are prestored. The path images are then transformed to grayscale and divided into nine parts. White pixels in these segments are saved and 1D array of different directions is created. If an object's co-ordinates shift for different frames, it means a moving object is identified. The detection method is iterated by looking for unique coordinates in different frames [13]. In this way, from the video source input each frame produces two mathematically determined arrays for the right and left direction respectively. The input list from the frame is appended, and the minimum difference algorithm is implemented by simultaneously searching for total number of discrepancies between the two sets. The array generating the minimum



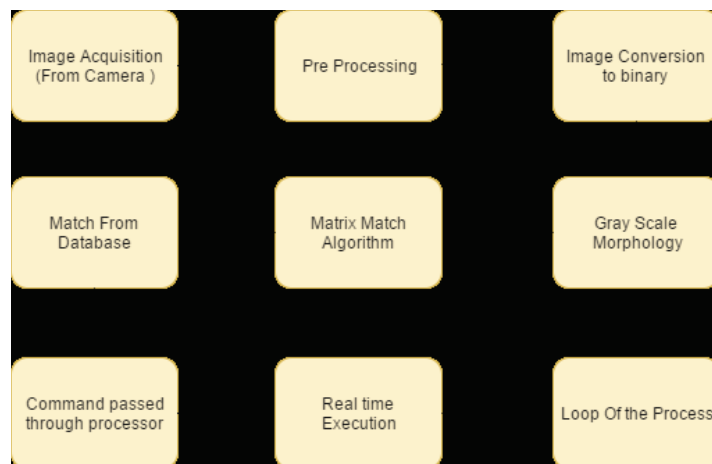
value gives us a precise estimate of the path that the video source must have taken into account.

## Speed Change

The changing of moving object coordinates is measured at different time intervals and stored in an array. For objects around the vehicle, the rate of velocity change is determined using the array. When the processed path is detected, the program starts the microcontroller with signals and regulates the velocity of the actuators(motors). Histogram represents tabulated frequencies such as rectangles / triangles erected over discrete intervals with an area proportional to the frequency of observations. This aids in and tracks speed variations.

## Data processing

The Processor measures everything from the upcoming inputs, and sends successful commands back. The retour controller transmits the decoded logic for the actuators as a binary electrical value. It is then forwarded to the receiver that is mounted on the car. Different signs are stored as blocks of data and matched using best matching algorithm.

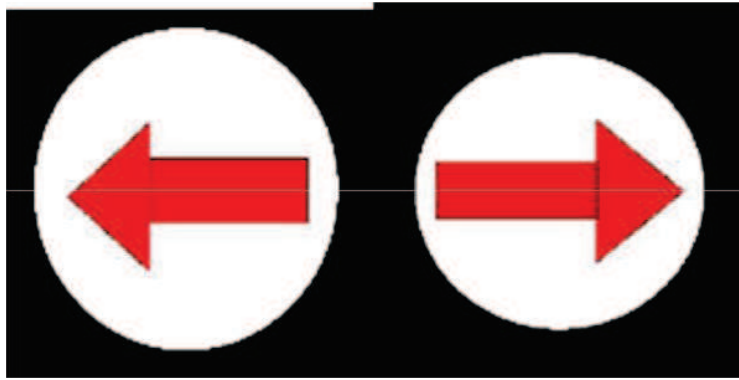


**Fig. 6: Block Diagram**

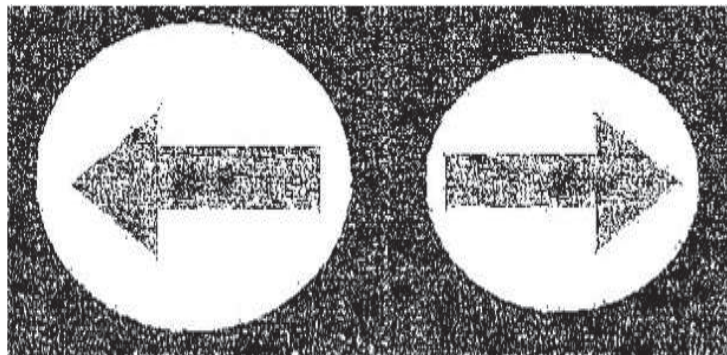
## Result

Due to compression and continuous image capture., the processor take decision and directs the car. It follows lane driving and changes lanes if heavy density is found on the lane and its speed also varies. This reads various road symbols on the road and acts accordingly.





**Fig. 7: Left Right Database**



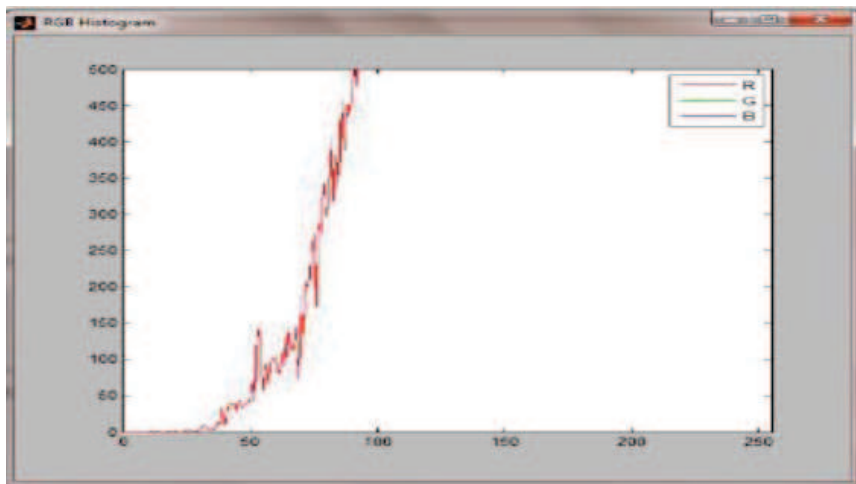
**Fig. 8: Left Right Gray Scaled Images**



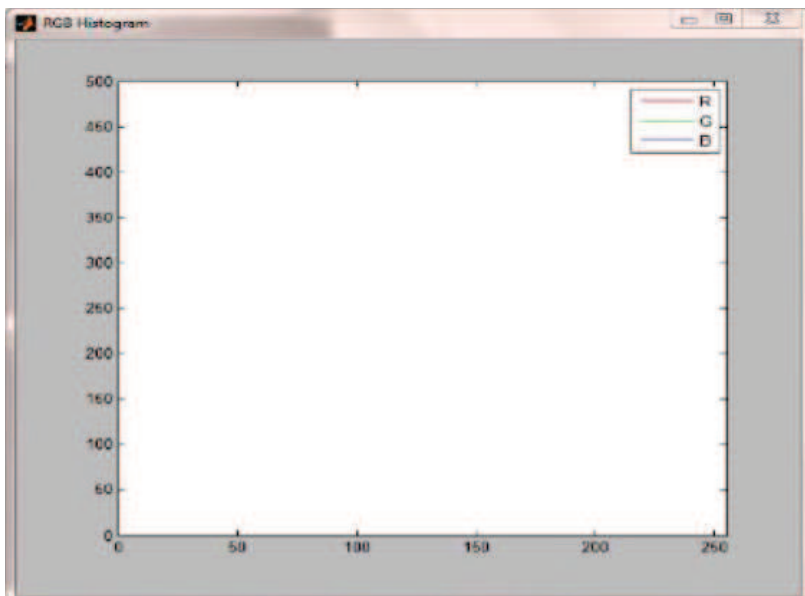
**Fig. 9: Lane Detection**



**Fig. 10: Road Symbols in different formats**



**Fig. 11: Histogram of dense traffic**



**Fig. 12: Histogram of Empty Roads**

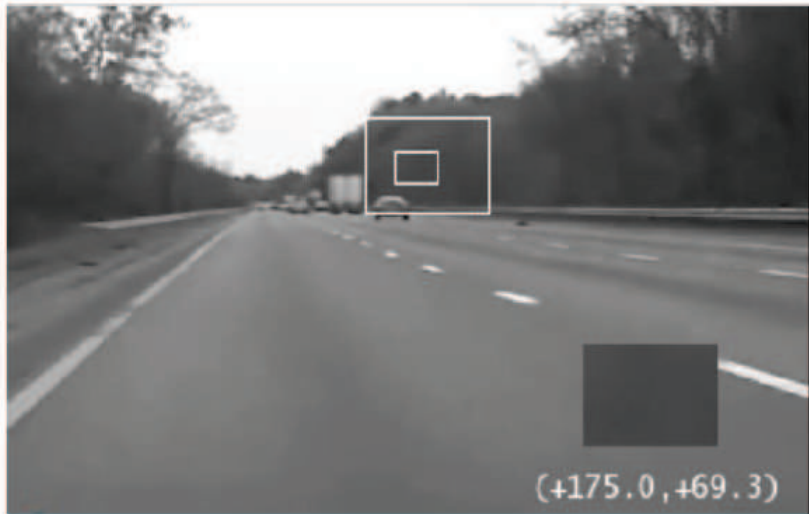


Fig. 13: Vehicle Detection on the road

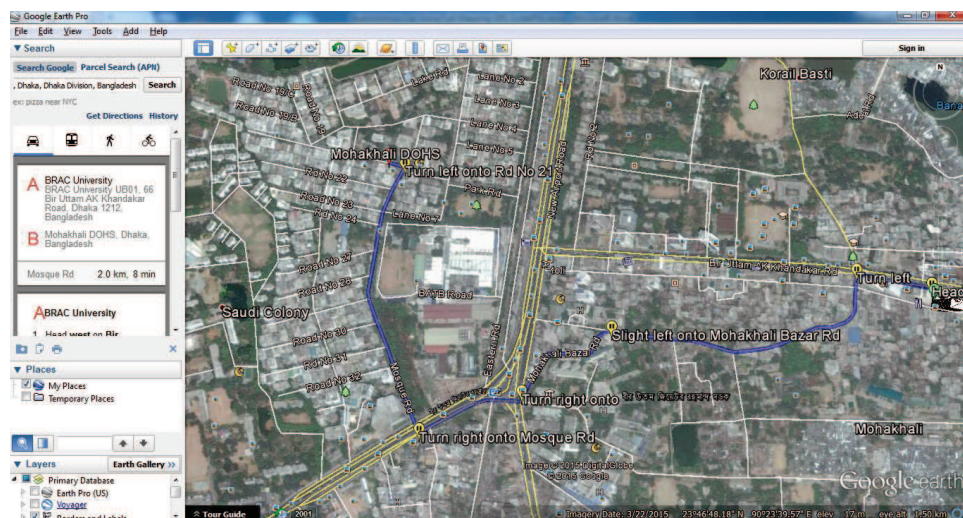


Fig. 14: Working Path via GPS



**Fig. 15: Real Time Image Identification**

## **Discussion & Conclusion**

Driving of automatic cars are now a very exciting aspect of the motor vehicle industry. This kind of automation in driving has not been established yet in Bangladesh. Automatic vehicles will constitute a major step forward in our nation's technological advancement. This project shows significant promise to upgrade automatic driving technologies and it is believed that future work will concentrate on refining and pioneering the approaches. It would be a very propitious sector if our government and private investors are willing to grant this research field to finance.

Implementing this project with a limited budget is difficult. LASER sensors are required to obtain precise and accurate results. Such a kind of sensors is comparatively expensive. If the laser sensor called "LIDAR" is used in future works, the tests will certainly have very fewer errors. Further changes in the hardware platform would give better results in accurately collecting and synchronizing GPS data with the Arduino.

## **References**

- [1] A. Alam, "**Road Traffic Accidents in Bangladesh**", *Journal of Bangladesh College of Physicians and Surgeons*, vol. 36, no. 4, pp. 137-138, 2018.
- [2] M. Jabbar, M. Islam, R. Sultana and S. Akhter, "**Risk Factors of Road Traffic Accidents (RTA) in context of Bangladesh**", *Journal of Dhaka Medical College*, vol. 18, no. 2, pp. 161-165, 1970.
- [3] Y. Holder, "**Book Reviews: World report on road traffic injury prevention: its implication for low-income countries**", *African Safety Promotion: A Journal of Injury and Violence Prevention*, vol. 2, no. 2, 2008.
- [4] S. LI, D. QIAN and N. LI, "**BP Simulation Model and Sensitivity Analysis of Right-turn Vehicles' Crossing Decisions at Signalized Intersection**", *Journal of Transportation Systems Engineering and Information Technology*, vol. 10, no. 2, pp. 49-56, 2010.

- [5] C. LU and D. HE, "**Efficient method for object contour extraction based on probability distribution image**", *Journal of Computer Applications*, vol. 28, no. 10, pp. 2636-2638, 2009.
- [6] T. Suzuki, R. Usami and T. Maekawa, "**Automatic Two-Lane Path Generation for Autonomous Vehicles Using Quartic B-Spline Curves**", *IEEE Transactions on Intelligent Vehicles*, vol. 3, no. 4, pp. 547-558, 2018.
- [7] L. Louis, "**Working Principle of Arduino and Using it as a Tool for Study and Research**", *International Journal of Control, Automation, Communication and Systems*, vol. 1, no. 2, pp. 21-29, 2016.
- [8] "**The working principle of an Arduino - IEEE Conference Publication**", *Ieeexplore.ieee.org*, 2020. [Online]. Available: <https://ieeexplore.ieee.org/abstract/document/6997578/>. [Accessed: 15- Dec- 2020].
- [9] "**Global Positioning System**", *En.wikipedia.org*, 2020. [Online]. Available: [https://en.wikipedia.org/wiki/Global\\_Positioning\\_System](https://en.wikipedia.org/wiki/Global_Positioning_System). [Accessed: 15- Dec- 2020].
- [10] "**(PDF) GLOBAL POSITIONING SYSTEM AND IT'S WIDE APPLICATIONS**", *ResearchGate*, 2020. [Online]. Available: [https://www.researchgate.net/publication/305619832\\_GLOBAL\\_POSITIONING\\_SYSTEM\\_AND\\_IT'S\\_WIDE\\_APPLICATIONS](https://www.researchgate.net/publication/305619832_GLOBAL_POSITIONING_SYSTEM_AND_IT'S_WIDE_APPLICATIONS). [Accessed: 15- Dec- 2020].
- [11] J. Cho, "**Feature Extraction of Shape of Image Objects in Content-based Image Retrieval**", *The KIPS Transactions:PartB*, vol. 10, no. 7, pp. 823-828, 2003.
- [12] K. Gopalakrishnan, "**Deep Learning in Data-Driven Pavement Image Analysis and Automated Distress Detection: A Review**", *Data*, vol. 3, no. 3, p. 28, 2018. Available: [10.3390/data3030028](https://doi.org/10.3390/data3030028).
- [13] A. A. Nayan, J. Saha, A. N. Mozumder, K. R. Mahmud, A. K. A. Azad, "**Real Time Multi-Class Object Detection and Recognition Using Vision Augmentation Algorithm**", *IJAST*, vol. 29, no. 05, pp. 14070 - 14083, Oct. 2020.