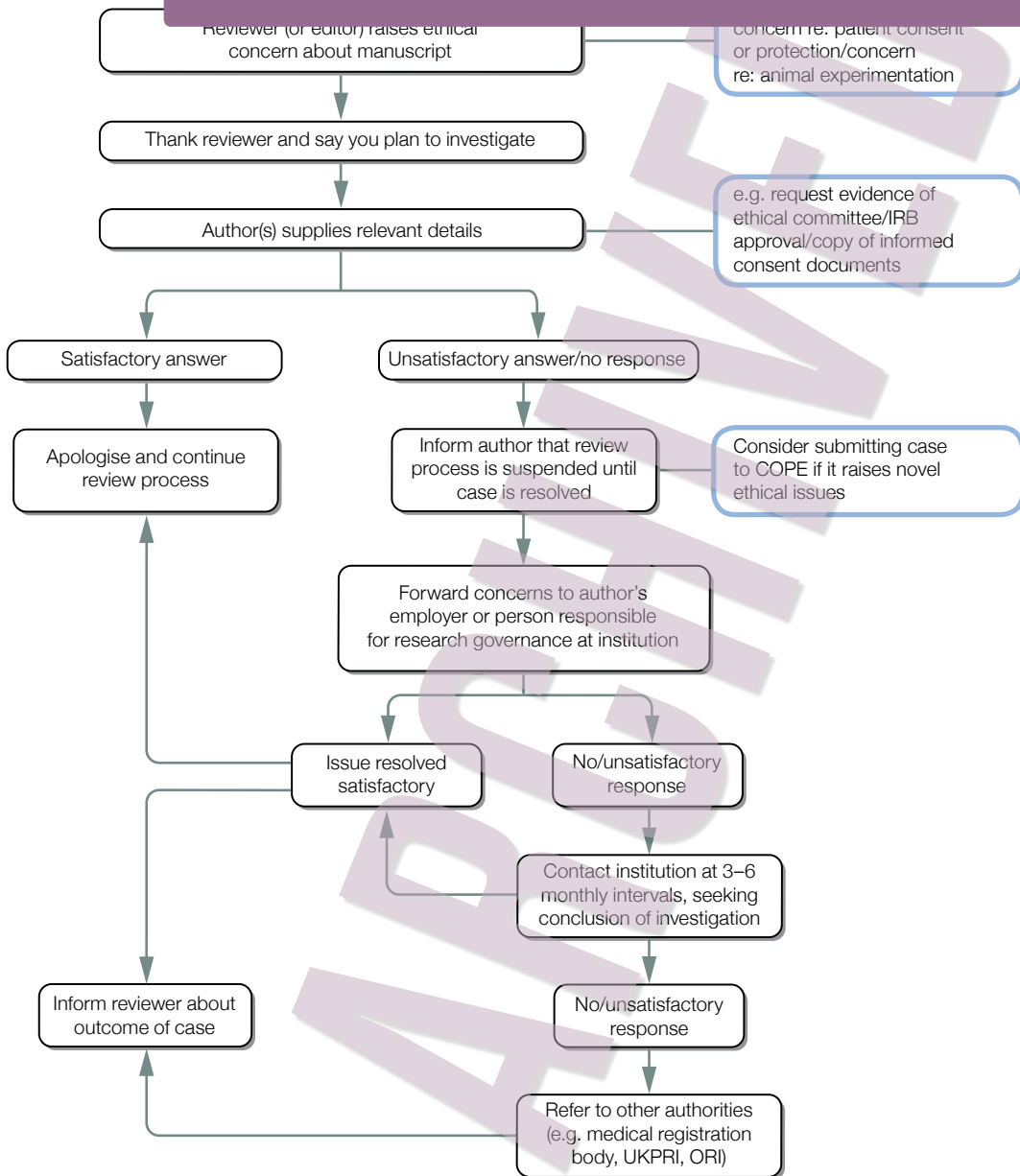


# What to do if you suspect an ethical problem with a submitted manuscript

YOU ARE VIEWING AN ARCHIVED VERSION OF THIS DOCUMENT

View the latest version at

<https://doi.org/10.24318/cope.2019.2.19>



Developed for COPE by Liz Wager of Sideview ([www.lizwager.com](http://www.lizwager.com)) © 2013 Committee on Publication Ethics First published 2006

A non-exclusive licence to reproduce these flowcharts may be applied for by writing to: [cope\\_administrator@publicationethics.org](mailto:cope_administrator@publicationethics.org)