



WestJEM

Volume XII, Number 4, November 2011

Open Access at www.westjem.org

ISSN 1936-900X

Western Journal of Emergency Medicine

A Peer-Reviewed Professional Journal

AIRWAY

- 365 Rapid Sequence Intubation from the Patient's Perspective** (Brief Research Report)
D Kimball, RC Kincaide, C Ives, S Henderson
- 368 Impending Airway Compromise due to Cystic Hygroma** (Images in Emergency Medicine)
G Weiser, N Beck-Razi, I Shavit
- 370 Quincke's Disease** (Images in Emergency Medicine)
W Johnson, N Shastri, M Fowler

CLINICAL PRACTICE

- 371 Myositis Ossificans** (Images in Emergency Medicine)
TY Chuah, TP Loh, HY Loi, KH Lee
- 372 Nonconvulsive Status Epilepticus in Hepatic Encephalopathy** (Case Report)
P Jhun, H Kim
- 375 Antibiotic Prescribing Practices of Emergency Physicians and Patient Expectations for Uncomplicated Lacerations** (Original Research)
S Ong, GJ Moran, A Krishnadasan, DA Talan
- 381 Comparison of Three Aspirin Formulations in Human Volunteers** (Original Research)
SP Nordt, RF Clark, EM Castillo, DA Guss
- 386 Reversal of Warfarin-Induced Hemorrhage in the Emergency Department** (Review)
M Zareh, A Davis, S Henderson
- 393 Tattoos and Piercings: A Review for the Emergency Physician** (Review)
M Urdang, JT Mallek, WK Mallon
- 399 Propofol and Etomidate are Safe for Deep Sedation in the Emergency Department** (Review)
MA Denny, R Manson, D Della-Giustina
- 404 Ileus and Small Bowel Obstruction in an Emergency Department Observation Unit: Are There Outcome Predictors?** (Brief Research Report)
ST Dorsey, ET Harrington, WF Peacock IV, CL Emerman



Caring for 25% of Patients in California



With nearly 70 hospital sites, our physicians see a quarter of patients in California each year. Whether you are looking to practice in a metropolitan area or a place with a small-town feel, CEP America has the ideal opportunity for you.

At CEP America, our independent physician Partners thrive under a democratic structure and positive culture that balances professional growth with quality of life. Partners benefit from local practice independence, national management support, and ownership in the Partnership from Day 1.

Find out what opportunities are available for you.

Visit info.cep.com/25percent

Or call **800-842-2619**

CEP
America[®]

Western Journal of Emergency Medicine

Mark I. Langdorf, MD, MHPE, Editor-in-Chief
University of California, Irvine School of Medicine

Sean O. Henderson, MD, Senior Associate Editor
Keck School of Medicine, University of Southern California

Shahram Lotfipour, MD, MPH, Managing Associate Editor
University of California, Irvine School of Medicine

Rick McPheeters, DO, Associate Editor
Kern Medical Center

Section Editors

Behavioral Emergencies

Leslie Zun, MD, MBA
Chicago Medical School

Clinical Practice

Eric Snoey, MD
Alameda County Medical Center
Michael Burg, MD
Kaweah Delta Health Care District

Critical Care

H. Bryant Nguyen, MD, MS
Loma Linda University
Jeffrey Sankoff, MD
University of Colorado

Disaster Medicine

Christopher Kang, MD
Madigan Army Medical Center

Education

Michael Epter, DO
University of Nevada
Douglas Ander, MD
Emory University

ED Administration

Jeffrey Druck, MD
University of Colorado
Erik D. Barton, MD, MS, MBA
University of Utah

Emergency Cardiac Care

Amal Mattu, MD
University of Maryland

Emergency Medical Services

Christopher Kahn, MD, MPH
University of California, San Diego
David E. Slattery, MD
University of Nevada

Geriatrics

Teresita M. Hogan, MD
Resurrection Medical Center, Chicago

Infectious Disease

Robert Derlet, MD
University of California, Davis
Sukhjit S. Takhar, MD
Harvard Medical School

Technology in Emergency Medicine

James Killeen, MD
University of California, San Diego
Sanjay Arora, MD
University of Southern California

Injury Prevention

Bharath Chakravarthy, MD, MPH
University of California, Irvine
Shahram Lotfipour, MD, MPH
University of California, Irvine

International Medicine

Tareg Bey, MD
University of California, Irvine
Chris Mills, MD, MPH
Santa Clara Valley Medical Center

Legal Medicine

Greg P. Moore, MD, JD
Madigan Army Medical Center

Methodology and Biostatistics

Craig Anderson, MPH, PhD
University of California, Irvine
Christian McClung, MD
University of Southern California
Michael Menchine, MD, MPH
University of Southern California

Neurosciences

John Sarko, MD
University of Arizona

Pediatric Emergency Medicine

Judith Klein, MD
University of California, San Francisco
Paul Walsh, MD, MSc
Kern Medical Center

Public Health

Jeremy Hess, MD, MPH
Emory University
Trevor Mills, MD, MPH
Louisiana State University

Resident/Student/Fellow Forum

Laleh Gharahbaghian, MD
Stanford University
Beau Briese, MD, MA
Stanford/Kaiser EM Program

Trauma

Ali S. Raja, MD, MBA, MPH
*Brigham & Women's Hospital/
Harvard Medical School*

Toxicology

Jeffrey R. Suchard, MD, FACMT
University of California, Irvine
Brandon Willis, DO, MS
Virginia Commonwealth University

Ultrasound

Seric Cusick, MD, RDMS
University of California, Davis
J. Christian Fox, MD, RDMS
University of California, Irvine

Editorial Board

Barry E. Brenner, MD, MPH
Case Western Reserve University

Robert W. Derlet, MD
University of California, Davis
Steven Gabaeff, MD
American Academy of EM

Debra Houry, MD, MPH
Emory University

Brent King, MD, MMM
University of Texas, Houston

Edward Michelson, MD
Case Western University

Jonathan Olshaker, MD
Boston University

Edward Panacek, MD, MPH
University of California, Davis

Niels K. Rathlev, MD
*Tufts University Medical School and
Baystate Medical Center*

Robert M. Rodriguez, MD
*University of California, San
Francisco*

Scott Rudkin, MD, MBA
University of California, Irvine

Peter Sokolove, MD
University of California, Davis

Samuel J. Stratton, MD, MPH
Orange County, CA, EMS Agency

Thomas Terndrup, MD
Pennsylvania State University

Leslie Zun, MD, MBA
Chicago Medical School

Arif Alper Cevik, MD
*Eskişehir Osmangazi University
Medical Center, Eskişehir, Turkey*

Francesco Della Corte, MD
*Azienda Ospedaliera Universitaria
"Maggiore della Carità", Novara,
Italy*

Tiffany Abramson, BA
Editorial Assistant

Samer A. Assaf, BA
Editorial Assistant

Erik A. Berg, BA
Editorial Assistant

Marcia Blackman
AAEM Liaison

International Editors

Vijay Gautam, MBBS, FRCS
University of London, United Kingdom

Amin Antoine Kazzi, MD
*The American University of Beirut,
Lebanon*

Steven Hoon Chin Lim, MD
Changi General Hospital, Singapore

Editorial Staff

Rex Chang, BS
Editorial Director

June Casey, BA
Copy Editor

Sharon Hartmans, BA
Editorial Assistant

J. Akiva Kahn, MD, MBA
Editorial Assistant

Samer Roumani, BS
*Assistant Editorial
Director*

Stephen Sanko, MD
Editorial Assistant

Official Journal of the California Chapter of the American Academy of Emergency Medicine, the California Chapter of the American College of Emergency Physicians and the American College of Osteopathic Emergency Physicians

Publisher
Department of Emergency Medicine, University of California, Irvine



CALIFORNIA ACEP
AMERICAN COLLEGE OF EMERGENCY PHYSICIANS



Available in Pub Med, Pub Med Central, CINAHL, SCOPUS, Google Scholar, eScholarship, Melvyl (The Catalog of the University of California Libraries), Directory of Open Access Journals, Medscape and MDLinx Emergency Med.

WestJEM, 101 The City Drive, Rt. 128-01, Orange, CA 92868-3201: Office (714) 456-6389; Email: Editor@westjem.org

Western Journal of Emergency Medicine

Table of Contents,

continued

CARDIOVASCULAR

- 408 Prehospital 12-Lead Electrocardiogram within 60 Minutes Differentiates Proximal versus Nonproximal Left Anterior Descending Artery Myocardial Infarction** (Original Research)
RA Aertker, CM Barker, HV Anderson, AE Denktas, GM Giesler, VR Julapalli, JF Ledoux, DE Persse, S Sdringola, MT Vooletich, JJ McCarthy, RW Smalling
- 414 Cardiac Complications in Acute Ischemic Stroke** (Original Research)
CR Wira III, E Rivers, C Martinez-Capolino, B Silver, G Iyer, R Sherwin, C Lewandowski
- 421 Course of Untreated High Blood Pressure in the Emergency Department** (Original Research)
JJ Cienki, LA DeLuca, DJ Feaster
- 426 Vascular Pedicle Width on Chest Radiograph as a Measure of Volume Overload: Meta-Analysis** (Original Research)
H Wang, R Shi, S Mahler, J Gaspard, J Gorchynski, J D'Etienne, T Arnold
- 433 “Playboy Bunny” Sign of Congestive Heart Failure** (Images in Emergency Medicine)
A Hokama, S Arakaki, D Shibata, T Maeshiro, F Kinjo, J Fujita
- 435 Pharmaceutical Sponsorship Bias Influences Thrombolytic Literature in Acute Ischemic Stroke** (Review)
RP Radecki

TECHNOLOGY AND EDUCATION

- 442 Can Emergency Medicine Residents Reliably Use the Internet to Answer Clinical Questions?** (Original Research)
R Krause, R Moscati, S Halpern, DG Schwartz, J Abbas
- 448 Completeness and Accuracy of Emergency Medical Information on the Web: Update 2008** (Original Research)
LS Zun, L Downey, S Brown
- 455 Simulation in Medical Student Education: Survey of Clerkship Directors in Emergency Medicine** (Brief Research Report)
C Heitz, RT Eyck, M Smith, M Fitch
- 461 Simulation in Medical School Education: Review for Emergency Medicine** (Review)
B Chakravarthy, E ter Haar, SS Bhat, CE McCoy, TK Denmark, S Lotfipour

ULTRASOUND

- 467 Comparison of Metallic Foreign-Body Removal between Dynamic Ultrasound and Static Radiography in a Pigs’ Feet Model** (Original Research)
WC Manson, JG Ryan, H Ladner, S Gupta

Policies for peer review, conflicts of interest, human and animal subjects protections and author instructions can be found online at www.westjem.org.

Western Journal of Emergency Medicine

Table of Contents,

continued

- 472 **Implications and Approach to Incidental Findings in Live Ultrasound Models**
(Brief Research Report)
JC Fox, AG Richardson, S Lopez, M Solley, S Lotfipour
- 475 **Ultrasound-Guided Peripheral Intravenous Access in the Emergency Department: Patient-Centered Survey** (Brief Research Report)
E Schoenfeld, H Shokoohi, K Boniface
- 478 **Incidental Identification of Right Atrial Mass Using Bedside Ultrasound: Cardiac Angiosarcoma**
(Case Report)
A Pourmand, K Boniface
- 481 **Bedside Ultrasound Diagnosis of Acalculous Cholecystitis from Epstein-Barr Virus**
(Case Report)
A Nagdev, J Ward

GERIATRICS

- 484 **Assessment of a Chief Complaint–Based Curriculum for Resident Education in Geriatric Emergency Medicine** (Original Research)
MC Wadman, WL Lyons, LH Hoffman, RL Muelleman
- 489 **Physician and Nurse Acceptance of Technicians to Screen for Geriatric Syndromes in the Emergency Department** (Original Research)
CR Carpenter, RT Griffey, S Stark, CM Coopersmith, BF Gage

TRAUMA

- 496 **Blunt Abdominal Trauma Patients Are at Very Low Risk for Intra-Abdominal Injury after Emergency Department Observation** (Original Research)
JL Kendall, AM Kestler, KT Whitaker, M-M Adkisson, JS Haukoos

Online Manuscripts

(Full text manuscripts available open access at http://escholarship.org/uc/uciem_westjem)

CLINICAL PRACTICE

- 505 **Oral and Tympanic Membrane Temperatures Are Inaccurate to Identify Fever in Emergency Department Adults** (Original Research)
BJ Barnett, S Nunberg, J Tai, ML Lesser, V Fridman, P Nichols, R Powell, R Silverman
- 512 **Food Protein-Induced Enterocolitis Syndrome as a Cause for Infant Hypotension** (Case Report)
RW Coates, KR Weaver, R Lloyd, N Ceccacci, MR Greenberg
- 515 **Torsion of Undescended Testis in a 14-Month-Old Child Refusing to Bear Weight** (Case Report)
RM Knight, PJ Cuenca

Policies for peer review, conflicts of interest, human and animal subjects protections and author instructions can be found online at www.westjem.org.

Western Journal of Emergency Medicine

Table of Contents,

continued

- 520 **Os Odontoideum: Rare Cervical Lesion** (Case Report)
KA Robson
- 523 **A Rare Isolated Trapezoid Fracture** (Images in Emergency Medicine)
N Afifi, JJ Lu
- 525 **Unusual Cause of Chest Pain on Radiograph** (Images in Emergency Medicine)
M Gallitelli, P De Chirico
- 526 **Continuous Diaphragm Sign** (Images in Emergency Medicine)
ER Schmitt, MD Burg
- 528 **Radiographic Evidence of Osteomyelitis** (Images in Emergency Medicine)
NT Souza, P Govindarajan

EDUCATION

- 530 **In-Training Practice Patterns of Combined Emergency Medicine/Internal Medicine Residents, 2003–2007** (Original Research)
CS Kessler, AA Gonzalez, LA Stallings, TA Templeman
- 537 **Feedback in the Emergency Medicine Clerkship** (Review)
AW Bernard, NE Kman, S Khandelwal
- 543 **Advanced Topics in Emergency Medicine: Curriculum Development and Initial Evaluation** (Review)
NE Kman, AW Bernard, DR Martin, D Bahner, D Gorgas, R Nagel, S Khandelwal

DERMATOLOGY

- 551 **Cutaneous Conditions Leading to Dermatology Consultations in the Emergency Department** (Original Research)
AR Jack, AA Spence, BJ Nichols, S Chong, DT Williams, SP Swadron, DH Peng
- 556 **Erythema Gydatum Repens: A Rare Paraneoplastic Rash** (Case Report)
M Gore, ME Winters
- 559 **Drug Rash with Eosinophilia and Systemic Symptoms: Two Emergency Department Cases** (Case Report)
A Tsyulnik, A Landman
- 563 **A Desert Rash** (Images in Emergency Medicine)
BE Bledsoe, M Loptien, RP Berkeley

CARDIOLOGY

- 565 **Pacemaker Limitation of Tachycardia in Hypovolemic Shock** (Case Report)
N Sparacino, M Geninatti, G Moore

Policies for peer review, conflicts of interest, human and animal subjects protections and author instructions can be found online at www.westjem.org.

Western Journal of Emergency Medicine

Table of Contents,

continued

567 Cardiac Arrest from Postpartum Spontaneous Coronary Artery Dissection (Case Report)
MT Pillow, NA Nguyen, D Kuo

571 Acute Aortic Dissection in Third Trimester Pregnancy without Risk Factors (Case Report)
L Kinney-Ham, HB Nguyen, R Steele, EL Walters

TRAUMA

575 Pylephlebitis: An Uncommon Complication of Intra-Abdominal Infection
(Images in Emergency Medicine)
T Hagopian, F Zuniga, SR Surani

577 Fracture Dislocation C6 to C7: Importance of Adequate Radiographs
(Images in Emergency Medicine)
E Muñoz-Mahamud, A Combalia

579 Pericardial Cyst: Unexpected Finding on a Chest Radiograph (Images in Emergency Medicine)
ER Schmitt, MD Burg

581 Severe Open Ankle Sprain (Images in Emergency Medicine)
BA Sinnott, J Strote

Policies for peer review, conflicts of interest, human and animal subjects protections and author instructions can be found online at www.westjem.org.



Thank you to our sponsors

Society Sponsors

CALIFORNIA CHAPTER OF THE
AMERICAN ACADEMY OF EMERGENCY MEDICINE

CALIFORNIA CHAPTER OF THE
AMERICAN COLLEGE OF EMERGENCY PHYSICIANS

FLORIDA CHAPTER OF THE
AMERICAN ACADEMY OF EMERGENCY MEDICINE

VIRGINIA STATE CHAPTER OF THE
AMERICAN ACADEMY OF EMERGENCY MEDICINE

AMERICAN COLLEGE OF OSTEOPATHIC EMERGENCY
PHYSICIANS

NEVADA CHAPTER OF THE AMERICAN ACADEMY OF
EMERGENCY MEDICINE

UNIFORMED SERVICES CHAPTER OF THE
AMERICAN ACADEMY OF EMERGENCY MEDICINE

Department Sponsors

BAYSTATE MEDICAL CENTER/TUFTS
UNIVERSITY
SPRINGFIELD, MA

BRIGHAM AND WOMEN'S HOSPITAL/
HARVARD MEDICAL SCHOOL
BOSTON, MA

DENVER HEALTH
DENVER, CO

EMORY UNIVERSITY
Atlanta, GA

FLORIDA HOSPITAL MEDICAL CENTER
Orlando, FL

HENRY FORD FAIRLANE MEDICAL CENTER
Dearborn, MI

HENRY FORD MEDICAL CENTER
Detroit, MI

KERN MEDICAL CENTER
Bakersfield, CA

LEHIGH VALLEY HOSPITAL AND HEALTH
NETWORK
Allentown, PA

MADIGAN ARMY MEDICAL CENTER
Tacoma, WA

MAIMONIDES MEDICAL CENTER
Brooklyn, NY

MARICOPA MEDICAL CENTER
Phoenix, AZ

MASSACHUSETTS GENERAL HOSPITAL
Boston, MA

MEDICAL COLLEGE OF GEORGIA
Augusta, GA

MEDICAL UNIVERSITY OF SOUTH CAROLINA
Charleston, SC

NEW YORK MEDICAL COLLEGE
Valhalla, NY

OHIO STATE UNIVERSITY MEDICAL CENTER
Columbus, OH

RESURRECTION MEDICAL CENTER
Chicago, IL

ROBERT WOOD JOHNSON HOSPITAL
New Brunswick, NJ

STANFORD UNIVERSITY
Palo Alto, CA

UC DAVIS
Davis, CA

UC Irvine
Orange, CA

UC SAN DIEGO
La Jolla, CA

UC SAN FRANCISCO FRESNO
Fresno, CA

UC SAN FRANCISCO
San Francisco, CA

UNIVERSITY OF ILLINOIS AT CHICAGO
Chicago, IL

UNIVERSITY OF NEBRASKA MEDICAL CENTER
Omaha, NE

UNIVERSITY OF NEVADA
Las Vegas, NV

UNIVERSITY OF SOUTHERN CALIFORNIA
LOS ANGELES, CA

UNIVERSITY OF TEXAS, HOUSTON
Houston, TX

UNIVERSITY OF UTAH
Salt Lake City, UT

This open access publication would not be possible without the generous support of our society sponsors, the Department of Emergency Medicine at the University of California Irvine, advertisers and department sponsors.

To become a departmental sponsor of the journal, receive print, as well as electronic copies, and free advertisement space please visit www.calaaem.org/westjem or contact:

Marcia Blackman
Cal/AAEM: WestJEM
555 East Wells Street
Milwaukee, WI 53202
Phone: (800) 884-2236
MBlackman@aaem.org

or

Shahram Lotfipour, MD, MPH
Managing Associate Editor
Phone: (714) 456-2326
Shahram.Lotfipour@uci.edu

Acknowledgment of *WestJEM* Top Section Editor and Top Reviewers

As 2011 draws to a close, *WestJEM* would like to honor the top reviewers and section editors of the past year. Without their generous contributions of time and expertise to the peer-review process, the *Journal* would not be able to advance its mission of emphasizing practical, efficient, and world-class emergency care. The top section editors and reviewers are chosen based on their quality of work, number of assignments, and timeliness of reviews.

Top Section Editors

Leslie Zun, MD, MBA
Chicago Medical Center

H. Bryant Nguyen, MD
Loma Linda University

Top Reviewers

Douglas Ander, MD
Emory University

Laleh Gharahbaghian, MD
Stanford University

H. Bryant Nguyen, MD
Loma Linda University

Beau Briese, MD, MA
Stanford/Kaiser EM Program

Julie A. Gorchynski, MD, MSc
Texas A&M University

John Sarko, MD
University of Arizona

David I. Bruner, MD, LCDR, MC
*Naval Medical Center,
Portsmouth, Virginia*

Casey A. Grover, MD
Stanford University

David E. Slattery, MD
University of Nevada

Robert Derlet, MD
University of California, Davis

Jeremy Hess, MD, MPH
Emory University

Eric Snoey, MD
*Alameda County Medical
Center*

Jeffrey Druck, MD
University of Colorado

Amal Mattu, MD
University of Maryland

Jeffrey R. Suchard, MD
*University of California,
Irvine*

Michael Epter, DO
University of Nevada

Michael Menchine, MD
University of Southern California

Leslie Zun, MD, MBA
Chicago Medical School

Lisa Moreno-Walton, MD
Louisiana State University

WestJEM Seeking Section Editors and Reviewers

WestJEM is seeking Section Editors in the fields of Behavioral Emergencies, Geriatrics, Disaster Medicine, Emergency Cardiac Care, and Trauma.

WestJEM also seeks reviewers in all topics of emergency medicine.

Please send CV and letter of interest to Editor-in-Chief, Dr Mark Langdorf at
Editor@westjem.org.

Acknowledgment to all *WestJEM* Reviewers

The Editors thanks all the reviewers of 2010–2011 for doing outstanding work. Their dedication and work ethic continues to help *WestJEM* grow and maintain high standards.

Abigail Hankin	Christopher N. Mills	Fred Henretig	Joshua Niclas	Matthew Valento	Samuel D. Luber
Adria Winter	Christopher R. Carpenter	Frederic P. Schoenberg	Joshua Tobias	Megan Boysen	Samuel J. Stellpflug
Adrienne Fratini	Cindy Chan	Gail Stewart	JR R. Pickett	Megan Ranney	Samuel J. Stratton
Aileen Wiglesworth	Clinton J. Coil	Gene Hern Jr	Justin Davis	Melanie Heniff	Samuel Lam
Alex Malone	Corey Heitz	Gerald A. Maguire	Kael Duprey	Melissa Givens	Sanjay Arora
Allan R. Mottram	Craig Newgard	Gerald Maloney Jr	Kakoli Roy	Michael Abraham	Sarah L. Cook
Allen Marino	Cyrus G. Shahpar	Gregory Moore	Kapil R. Dhingra	Michael Burg	Scott E. Rudkin
Alyssa Abo	Dan Quan	Gus M. Garmel	Kara Hennelly	Michael Epter	Scott Grosse
Amandeep Singh	Daniel J. Whitaker	H. Bryant Nguyen	Karl A. Sporer	Michael J. Mello	Shannon Self-Brown
Amit Rajparia	Daniel Wu	Hagop Afarian	Katherine Douglass	Michael Juliano	Sheryl Heron
Andrew J. Curran	Danielle Campagne	Hannah F. Watts	Kathleen C. Basile	Michael Menchine	Sheryl Strasser
Andrew Fine	Darien D. Cohen	Harman Arora	Kathleen E. Kane	Michael Richards	Sobia Ansari
Anne McCartt	Darren Malinoski	Harold Simon	Kathryn Challoner	Michael Windle	Sridhar Basavaraju
Anne-Michelle Ruha	Dave W. Lu	Harry Karydes	Keith K. French	Michael Young	Stanley Wei
Annie Sadosty	David A. Jerrard	Heather Borek	Ken M. Kelley	Michelle Fleurat	Stephanie Cooper
Anthony Medak	David A. Townes	Holly Avey	Kenneth C. Jackimczyk Jr	Misha Kassel	Stephen G. Sanko
Avinash Patil	David B. Misner	Ian Brown	Kenneth Linden	Moira Davenport	Stephen J. Wolf
Barbara K. Blok	David Della-Giustina	Ingrid Lim	Kennon Heard	Nancy J. Thompson	Steve McLaughlin
Barry E. Brenner	David E. Slattery	J.R. Richards	Kenny V. Banh	Nathanael J. McKeown	Steve Pitts
Bart Hammig	David F. Gaieski	J. Dave Barry	Krista D. Caldwell	NoelleAngelique M. Molinari	Steve Weiss
Beau Briese	David Gitlin	Jag S. Heer	Kristen Nordenholz	Otto Liebmann	Steven C. Gabaeff
Benjamin Harrison	David Hile	Jake Jacoby	Kristin Dunkle	P. Ishimine	Steven H. Mitchell
Berenice Perez	David Johnson	James A. Pfaff	Kristine Tucker	Patricia Kavanagh	Stuart P. Swadron
Besh Barcega	David K. English	James Andruchow	Kyle Nelson	Patrick Whiteley	Tae Kim
Bharath Chakravarthy	David N. Zull	James Brown	Kym Sterling	Paul Mroz	Taher Vohra
Bonnie Hartstein	David R. Vinson	James F. Holmes	L. Shakiyla Smith	Paul Tran	Tareg Bey
Brad Bunney	David T. Schwartz	James Hardy	Laleh Gharahbaghian	Paul Walsh	Teal Bell
Bradley N. Younggren	David Tanen	James P. Capes	Lalena M. Yarris	Peter C. Hou	Thomas G. Martin
Brandon H. Backlund	Debbie Washke	James W. Rhee	Lane Smith	Peter J. Cuenca	Thomas Kelly
Brian Chinnock	Deborah Battaglia	Jamie Shandro	Larry Corman	Peter P. Taillac	Thomas M. Rice
Brian Clyne	Deepak Chandwani	Jan M. Shoenberger	Larry Raney	Peter W. Pryor II	Thomas Price
Brian Dew	Deirdre Anglin	Janak K. Acharya	Lee Shockley	Rais Vohra	Thomas Simon
Brian Eastridge	Dennis Hanlon	Jason Bryant	Leslie C. Oyama	Raymond Hemmert	Tim Meehan
Brian Payne	Diane Kang	Jason Haukoos	Leslie Simon	Renee Hsai	Timothy W. Lineberry
Brian Potts	Diane Winn	Jason W. Fischer	Linda Scheetz	Richard Byyny	Todd Berger
Brian W. Lin	Divy Ravindranath	Jeanette Walley-Jean	Lisa Hile	Richard Davidson	Todd M. Larabee
Brooks Laselle	Douglas Brosnan	Jeffrey Druck	Lisa Merck	Richard M. Patel	Todd McArthur
Bruce C. Perry	Douglas W. Lowery-North	Jeffrey Green	Lisa R. Muftic	Richard T. Griffey	Torrey A. Laack
Bryan Griffin	Dr. Lerner	Jeffrey Hom	Louise W. Kao	Rick A. McPheeters	Trevonne Thompson
Carl Skinner	Edward M. Castillo	Jeffrey R. Suchard	Lucas Karaelias	Rick Walker	Trevor S. Cadogan
Catherine A. Lynch	Ejaaz A. Kalimullah	Jennifer Baine	Luke K. Hermann	Robert Blankenship	Tristan Knutson
Chad S. Kessler	Elise O. Lovell	Jenny J. Lu	Malini K. Singh	Robert Brewer	Tsuyoshi Mitarai
Chandra Aubin	Elissa Perkins	Joanne Williams	Manish Amin	Robert Kacprowicz	Vincent L. Ball
Charles Garcia	Elizabeth DeVos	Joel Fein	Manish Goyal	Robert M. Bossarte	Volkan Topalli
Charles M. Little	Emily Luerssen	Joel M. Schofer	Marc Probst	Robert M. Rodriguez	Walter Allen Fink
Charles Saldanha	Eric D. Isaacs	Joel Meyers	Marci F. Hertz	Robert Steele	Warren Wiechmann
Charlotte Page Wills	Eric Katz	Joel T. Levis	Maria Hugi	Robert W. Derlet	Wendy C. Coates
Cherie Hargis	Eric Lavonas	John Belko	Maria Moreira	Roberta Capp	William Dodge
Chinwe Ogedegbe	Erik B. Kulstad	John C. Sakles	Marie Mullen	Robyn Hoelle	William Ken Milne
Chris Chisholm	Erin Ruel	John Kendall	Marilyn Geninatti	Rolando Torres	William Meehan
Chrissy Babcock	Ewen Wang	John McCourt	Mary Beth Shirk	Ronald Dieckmann	William T. Hurley
Christian D. McClung	Faheem W. Guirgis	John Sarko	Mary W. Rutherford	Ronny Otero	Wirachin Hoonpongmanont
Christian Young	Faried Banimahd	Jonathan C. Rork	Mary Z. Taylor	Ross P. Berkeley	Yashwant Chathamally
Christine M. Carr	Federico E. Vaca	Jonathan Elmer	Maryann E. Mazer	Ross W. Hooker	Zachary M. Shinar
Christopher Dong	Fernando R. Silva	Jonathan S. Ilgen	Mathew A. Waxman	S. Charles Schulz	Zane Horowitz
Christopher G. Strother	Fiona Gallahue	Josh Hargraves	Matt Breiding	Saleen Manternach	Ziad Kazzi
Christopher Gee	Francis DeRoos	Joshua Easter	Matt T. Keadey	Sam Kuan	



SCHOOL OF MEDICINE
UNIVERSITY of CALIFORNIA • IRVINE
Discover • Teach • Heal

University of California Irvine, Department of Emergency Medicine is seeking applicants for the fellowship in EMS and Disaster Medical Sciences for July 1, 2012. UCI Medical Center is a Level I Trauma center with 2200 runs/year and a 40,000 ED census. Fellows serve as HS Clinical Instructors. The program combines the disciplines of emergency management/disaster medicine and public health with traditional emphasis on services systems research including mass casualty management and triage. Completion of American Council of Graduate Medical Education (ACGME) accredited Emergency Medicine Residency required prior to start. The two-year combined program, with an integrated Masters of Public Health, will be jointly administered by Director, Emergency Medical Services and Disaster Medicine. Salary commensurate with level of clinical work. Send CV, statement of interest and three letters of recommendation to:

Carl Schultz, MD.
Department of Emergency Medicine, Rte. 128, UC Irvine Medical Center,
101 The City Drive South, Orange, CA 92868.

The University of California, Irvine is an equal opportunity employer committed to excellence through diversity.



SCHOOL OF MEDICINE
UNIVERSITY of CALIFORNIA • IRVINE
Discover • Teach • Heal

**EM FACULTY DEVELOPMENT / EDUCATION
FELLOWSHIP**

UNIVERSITY OF CALIFORNIA, IRVINE SCHOOL OF MEDICINE

University of California, Irvine, Department of Emergency Medicine (EM) is seeking a HS Clinical Instructor- Faculty Development and Education Fellow for July, 2012. University of California, Irvine Medical Center is a Level I Trauma center with 2500 runs/year, 40,000 ED census with a three-year residency program since 1989. Fellowship concentrations could include residency curriculum design/education, medical school curriculum design, and *Western Journal of EM* editing. This two-year fellowship requires completion of a Master degree in Education. One-year fellowship possible for those with a Master degree or starting one during the fellowship. Completion of an ACGME accredited EM Residency required. Salary commensurate with qualifications and proportion of clinical effort.

Send CV and statement of interest to Fellowship co-Directors:

Dr. Shahram Lotfipour at SHL@uci.edu
Dr. Bharath Chakravarthy at bhakrav@uci.edu

or
Department of Emergency Medicine
UC Irvine Medical Center, Route 128-01
101 The City Drive
Orange, CA 92868
or
Call 714-456-5239

See the Department of Emergency Medicine's website available at <http://www.emergencymed.uci.edu/fellowships.asp> for more details.



SCHOOL OF MEDICINE
UNIVERSITY of CALIFORNIA • IRVINE
Discover • Teach • Heal

University of California, Irvine, Department of Emergency Medicine seeks a Health Sciences Clinical Instructor. This is an ongoing recruitment. University of California, Irvine is a Level I Trauma center with 2200 runs/year, 40,000 ED census. Academic department with Division of Emergency Ultrasound since 2001. Director is fellowship trained and RDMS certified. Three other faculty are RDMS. Outside resident and med student emergency Ultrasound rotation established. Research, teaching and clinical environment. Clinical schedule of eight 10-hour shifts per month. Salary commensurate with level of clinical work. 1200 scans/year anticipated along with tape review of 4000 more. RDMS certification expected upon completion of the fellowship. Prior experience not required. Please send CV, statement of interest and three letters of recommendation to: J Christian Fox, MD RDMS. Department of Emergency Medicine, Route 128, UC Irvine Medical Center, 101 City Drive South, Orange, CA 92868.

The University of California, Irvine is an equal opportunity employer committed to excellence through diversity.



As the scope of the *Western Journal of Emergency Medicine* expands, we are actively seeking section editors for the following areas of interest:

- | | |
|--------------------|------------------------|
| Behavior Emergency | Disaster Medicine |
| ED Administration | Emergency Cardiac Care |
| Geriatrics | Trauma |

WestJEM is also seeking reviewers in all topics of emergency medicine. Please email your CV to Mark Langdorf at editor@westjem.org





Sinai Health System

National Update on Behavioral Emergencies Conference

Registration Fees \$495 in advance

\$600 at the conference

*Reduced fee for residents and students
(All fees are non-refundable)*

For more information regarding the national 2-day conference, please contact Trena Burke, Conference Coordinator
Phone: (773) 257-6589 • E-mail: trena.burke@sinai.org

REGISTER TODAY!
2-day Conference
December 1st and 2nd
Flamingo Las Vegas

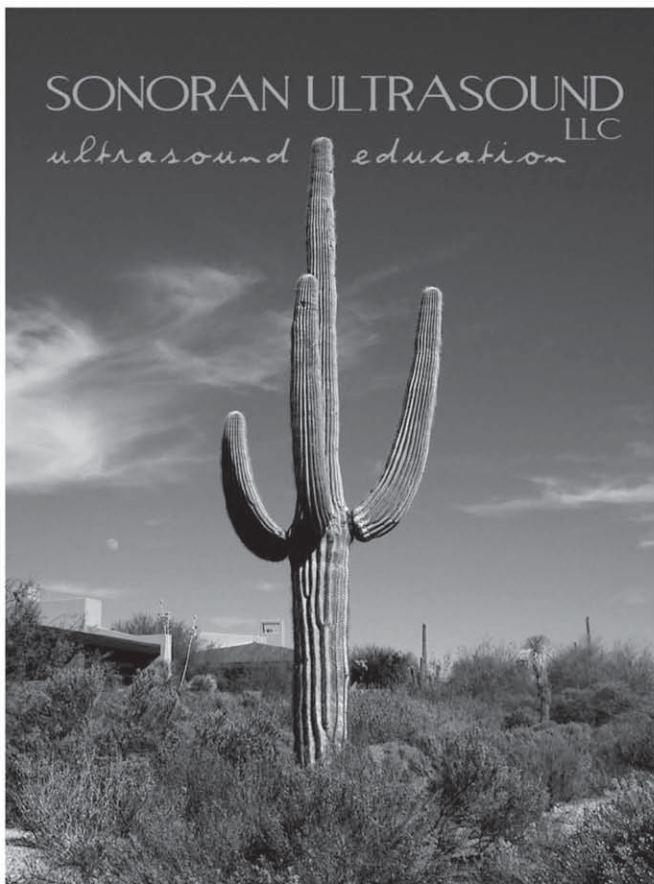
Pre-Conference Seminar • November 30
\$250 advance registration • \$350 at the conference
Systems Change and Flow Improvement for Behavioral Health Clients
in the ED. Sponsored by Institute for Behavioral Healthcare Improvement
For more information: www.ibhi.net/nuobe2011seminar

The only 2-day conference on Behavioral Emergencies

Conference objective – to improve the knowledge about psychiatric patients and to enhance collaboration among caregivers in the emergency department for patients with behavioral emergencies.

Invited participants – emergency physicians and nurses, physician assistants, psychiatrists and psychiatric nurses, mental health workers, psychologists and social workers.

To register on-line go to www.behavioralemergencies.com



FACULTY EXPERTISE

Sonoran Ultrasound, LLC is comprised of nationally recognized emergency physician experts in ultrasound. All instructors are fellowship trained and have Registered Diagnostic Medical Sonographer (RDMS) Credential.

Category I AMA CME. 1-Day courses qualify for 6.5 units while 2-Day courses qualify for 13 units.

IMPLEMENTATION

Every possible obstacle encountered by the non-radiologist for utilizing ultrasound is addressed and overcome upon completion of our program. Each course contains clear pathways for credentialing, quality assurance, documentation, and billing requirements.

PATHOLOGY

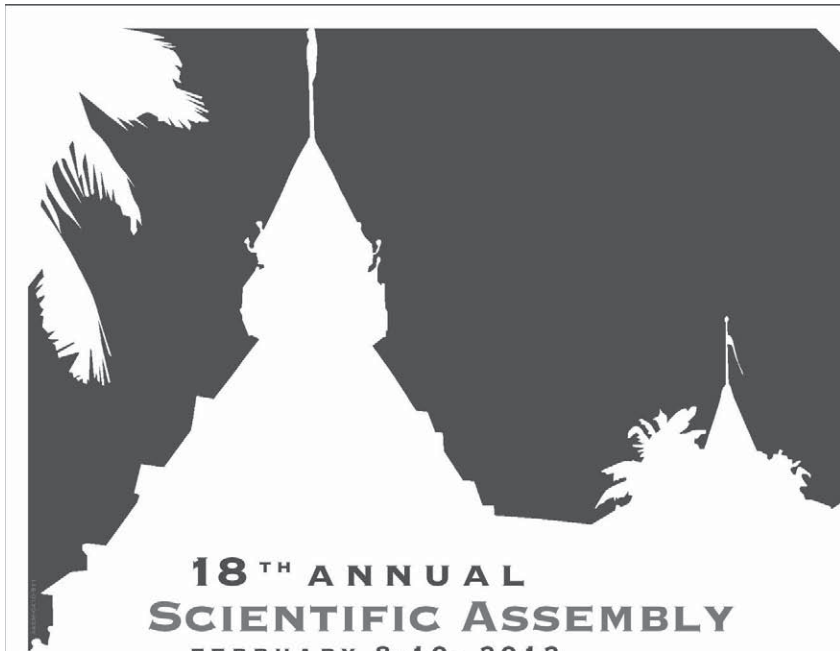
Video-clips of positive scans in all categories are integrated throughout course

SonoranUltrasound.com • ultrasoundeducation@gmail.com • 949 - 226 - 8548

THE IV INTER-AMERICAN
EMERGENCY MEDICINE CONFERENCE
A bilingual conference with remote simultaneous translation

**MAY
2012**

Argentina



**18TH ANNUAL
SCIENTIFIC ASSEMBLY**
FEBRUARY 8-10, 2012



FAEM
always means
board certified

HOTEL DEL CORONADO  SAN DIEGO

Pan-Pacific Emergency Medicine Congress 2012

**PEMC
2012**

***Hand-in-Hand
Across the Pacific***

**October 23-26, 2012
Coex, Seoul, Korea**

For the first time, the American Academy of Emergency Medicine (AAEM) and the Korean Society of Emergency Medicine (KSEM) organize the Pan-Pacific Emergency Medicine Congress 2012 (PEMC 2012), in Seoul, Korea, on October 23-26, 2012. The latest issues and various areas that cover the emergency medicine will be discussed.

Approximately 1,000 attendees will join the congress. Renowned scholars and experts will offer sessions and workshops in areas of interest to those involved in emergency medicine around the world.

PEMC 2012 will provide every participant with an excellent opportunity to exchange ideas, build new networks, strengthen old ones, and keep up with what is happening in the emergency medicine.

Mark your calendar for the PEMC 2012.
For more information, visit at
www.pemc2012.org.

Hosted by



The Korean Society of
Emergency Medicine



American Academy of
Emergency Medicine



Save the Date!

January 12-14, 2012



CALIFORNIA ACEP's
35th Annual

Emergency Medicine in Yosemite

Contact CALIFORNIA ACEP • Website: www.californiaacep.org

Phone: 1-916-325-5455 or E-mail: djaney@californiaacep.org

PRSTD STD
US POSTAGE
PAID
PERMIT #116
LAWRENCE, KS



Will you be my Partner?

CEP
America
EMERGENCY PHYSICIAN PARTNERS

All CEP America physicians are Partners and owners in our democratic group. You can be confident that CEP America is committed to long-term satisfying careers for emergency medicine DOs.

Join America's leading democratic emergency physician group, currently offering positions at 80 locations across the country - and growing!

Visit us at the 2011 ACOEP Scientific Assembly in Las Vegas at booth #11.

To learn more, visit info.cep.com/acoep or call 800-842-2619