

**SELMON
EXPRESSWAY**

Whiting Street PD&E Study

**Cultural Resource
Assessment Survey
Pond Addendum**

January 2022

Table of Contents

1.0 Executive Summary	1
2.0 Area of Potential Effect	5
3.0 Environmental Setting	7
3.1 Physical Environment of the Project Area.....	7
3.1.1 Land Use.....	7
4.0 Precontact and Historic Period Cultural Overviews	15
5.0 Florida Master Site File Search and Literature Review	16
5.1 Previously Conducted Cultural Resource Surveys	16
5.2 Previously Recorded Archaeological Resources.....	16
5.3 Previously Recorded and Potential Historic Resources.....	18
6.0 Project Research Design and Site Location Model	19
7.0 Methods.....	20
7.1 Archaeological Field Methods.....	20
7.2 Historic Resources Survey Methods	20
8.0 Results.....	21
8.1 Archaeological Survey Results	21
8.2 Historic Survey Results	23
8.2.1 8HI15085 - Carlton Academy Day School	23
9.0 Conclusions	26
9.1 Unanticipated Finds and Human Remains.....	26
9.2 Curation	26
10.0 References Cited.....	27

List of Figures

Figure 1.1: General Location of Ponds C, D, and E	2
Figure 1.2: Locations of Ponds C, D, and E Illustrated on a Topographic Map	3
Figure 2.1: Project APE Illustrated on Aerial Mapping.....	6
Figure 3.1: Approximate Location of Ponds C, D, and E on Available Sanborn Fire Insurance Maps from 1915	9
Figure 3.2: Approximate Location of Ponds C, D, and E on Available Sanborn Fire Insurance Maps from 1931	10
Figure 3.3: Approximate Location of Ponds C, D, and E on a 1938 Historic Aerial Photograph	12
Figure 3.4: Approximate Location of Ponds C, D, and E on a 1957 Historic Aerial Photograph	13
Figure 3.5: Approximate Location of Ponds C, D, and E on a 1975 Aerial Photograph	14
Figure 5.1: Previously Recorded Archaeological Sites Within and Near the Archaeological APE and Site Potential Zones	17
Figure 8.1: Existing Railway Corridor Containing Associated Gravel Ballast, Tracks, and Ties, Preventing Subsurface Testing Within Pond C, Facing South.....	21
Figure 8.2: Modified Embankment, Drainage Ditch, and Existing Railway Corridor Containing Associated Gravel Ballast, Tracks, and Ties, Preventing Subsurface Testing Within Pond D, Facing North.....	22
Figure 8.3: Existing Railway Corridor Containing Associated Gravel Ballast, Tracks, and Ties, Preventing Subsurface Testing Within Pond E, Facing South.....	22
Figure 8.4: Identified Historic Resources within the Project APE.....	24
Figure 8.5: Carlton Academy Day School (8HI15085), c. 1946, located at 205 N Brush Street, considered National Register-ineligible, facing East.....	25
Figure 8.6: Carlton Academy Day School (8HI15085), c. 1946, located at 205 N Brush Street, considered National Register-ineligible, facing Northeast	25

List of Tables

Table 5.1: Previous Surveys Containing or Partially Containing the Project Area.....16

Appendices

Appendix A: SHPO/FDHR Concurrence Letter, October 22, 2021

Appendix B: Florida Master Site File Forms

Appendix C: Survey Log

1.0 Executive Summary

The Tampa Hillsborough Expressway Authority (THEA), in coordination with the City of Tampa, is conducting a Project Development and Environment (PD&E) Study to evaluate the needs, costs, and effects of extending Whiting Street and reconfiguring the on-ramps of the Selmon Expressway at Jefferson Street and off-ramps at Florida Avenue and Channelside Drive. The study considers extending Whiting Street to North Meridian Avenue and includes improvements and realignment of the existing segment of Whiting Street, from Jefferson Street to North Brush Street. The extension will provide a direct connection of the Whiting Street corridor to North Meridian Avenue which will improve traffic flow and safety for all transportation modes and offer additional connections within the street network. As part of the PD&E Study, A Cultural Resource Assessment Survey (CRAS) was conducted by Janus Research in association with H.W. Lochner, Inc. (LOCHNER), and a report documenting the results was submitted to the State Historic Preservation Office (SHPO)/Florida Division of Historical Resources (FDHR) in August 2021. This report is an addendum to the 2021 CRAS that was coordinated with the SHPO/FDHR. A copy of the SHPO/FDHR concurrence letter for the previous CRAS associated with Whiting Street PD&E Study (Janus Research 2021, FDHR Project File Number 2021-5149) is included for reference in **Appendix A**.

The objective of this addendum is to identify cultural resources within the project area of potential effect (APE) of three new proposed pond locations, Ponds C, D, and E, and assess their eligibility for listing in the *National Register of Historic Places* (National Register) according to the criteria set forth in 36 CFR Section 60.4. The three new ponds are located in a developed area of the City of Tampa in Hillsborough County in Section 19 of Township 26 South, Range 19 East on the Tampa (1956 Photorevised [PR] 1969) U.S. Geological Survey (USGS) quadrangle map (**Figures 1.1 and 1.2**).

This assessment complies with the revised Chapter 267, *Florida Statutes (F.S.)* and the standards embodied in the FDHR's *Cultural Resource Management Standards and Operational Manual* (February 2003) and Chapter 1A-46 (*Archaeological and Historical Report Standards and Guidelines*), *Florida Administrative Code*. In addition, this report was prepared in consideration of the standards set forth in Part 2, Chapter 8 (*Archaeological and Historical Resources*) of the Florida Department of Transportation (FDOT) *PD&E Manual* (effective July 1, 2020). All work conforms to professional guidelines set forth in the *Secretary of Interior's Standards and Guidelines for Archaeology and Historic Preservation* (48 FR 44716, as amended and annotated). Principal Investigators meet the *Secretary of the Interior's Professional Qualification Standards* (48 FR 44716) for archaeology, history, architecture, architectural history, or historic architecture.

As a result of the archaeological survey completed for the CRAS addendum, no archaeological sites or archaeological occurrences were identified within the proposed pond sites. No shovel testing was feasible within the APE due to the presence of existing rail corridor, modified embankment, and drainage ditching. Background research and the pedestrian survey determined that the archaeological APE exhibits low potential for intact significant archaeological sites. The background research also determined that, unlike the western end of the larger area investigated during the 2021 CRAS, Ponds C, D, and E are each located outside of the main activity area associated with Fort Brooke, and no significant archaeological components associated with the Fort Brooke Military Reservation have been recorded in the vicinity of the archaeological APE. In addition, the background research noted that no previously recorded precontact period sites or human remains are recorded in or adjacent to Ponds C, D, or E.

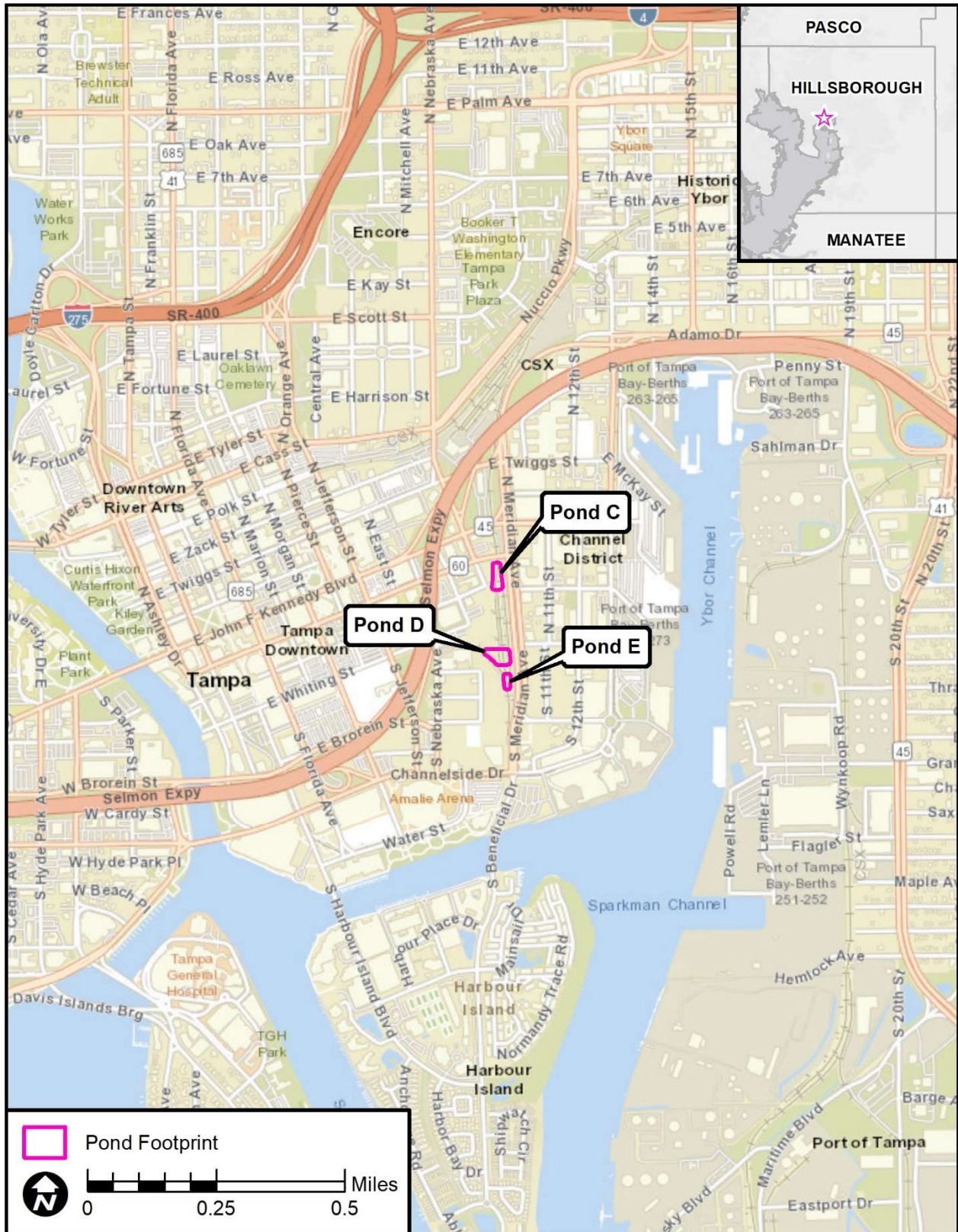


Figure 1.1: General Location of Ponds C, D, and E

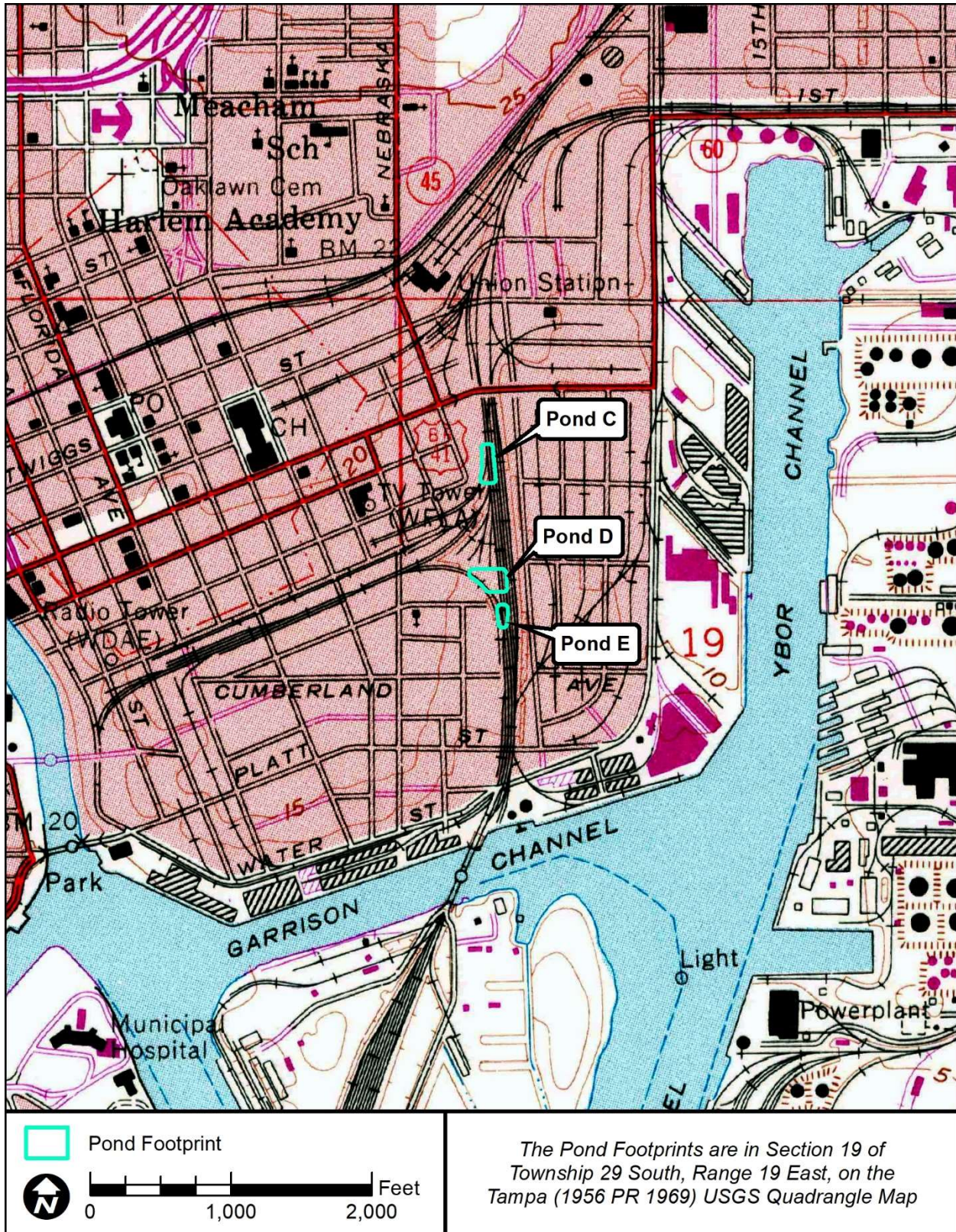


Figure 1.2: Locations of Ponds C, D, and E Illustrated on a Topographic Map

Four historic resources were identified within the historic resources APE, three of which were previously recorded and determined National Register-eligible: the Florida Central & Peninsular Railroad (8HI11987), the Perry Paint and Glass Company Building (8HI685), and Ardent Mills (8HI15084). The three previously recorded resources were documented in the FMSF as part of the 2021 CRAS and were considered National Register-eligible. The SHPO/FDHR concurred with the evaluations of National Register eligibility for all three previously recorded historic resources on October 22, 2021 (**Appendix A**). The fourth resource, the newly recorded Carlton Academy Day School (8HI15085) is considered National Register-ineligible due to its common style and diminished integrity.

2.0 Area of Potential Effect

According to 36 CFR 800.16(d), the APE is the geographic area or areas within which an undertaking may directly or indirectly cause changes in the character or use of historic properties if such properties exist. The APE is influenced by the scale and nature of the undertaking as well as its geographical setting. The APE must include measures to identify and evaluate both archaeological and historical resources. Normally, archaeological, and other below-ground resources will be affected by ground disturbing activities and changes in ownership status. Structural resources and other above ground sites, however, are often impacted by those activities as well as alterations to setting, access and appearance. As a consequence, the survey methodologies for these two broad categories of sites differ.

The archaeological APE considers the improvements that will be implemented as part of the proposed project, the extent of potential ground disturbance, and the urbanized setting and character of the project area. The survey for archaeological sites typically focuses on identifying and evaluating cultural resources within the geographic limits of the proposed action and its associated ground disturbing activities. Therefore, the archeological APE consists of the footprint of the proposed ponds (**Figure 2.1**).

The historic resources APE was developed in consideration of the type of improvement proposed, and its potential for impacts. The historic resources APE consist of the footprint of the pond alternatives, as well as a 150-foot buffer from their edges to account for potential visual impacts. The historic resources APE is illustrated on an aerial photograph in **Figure 2.1**.

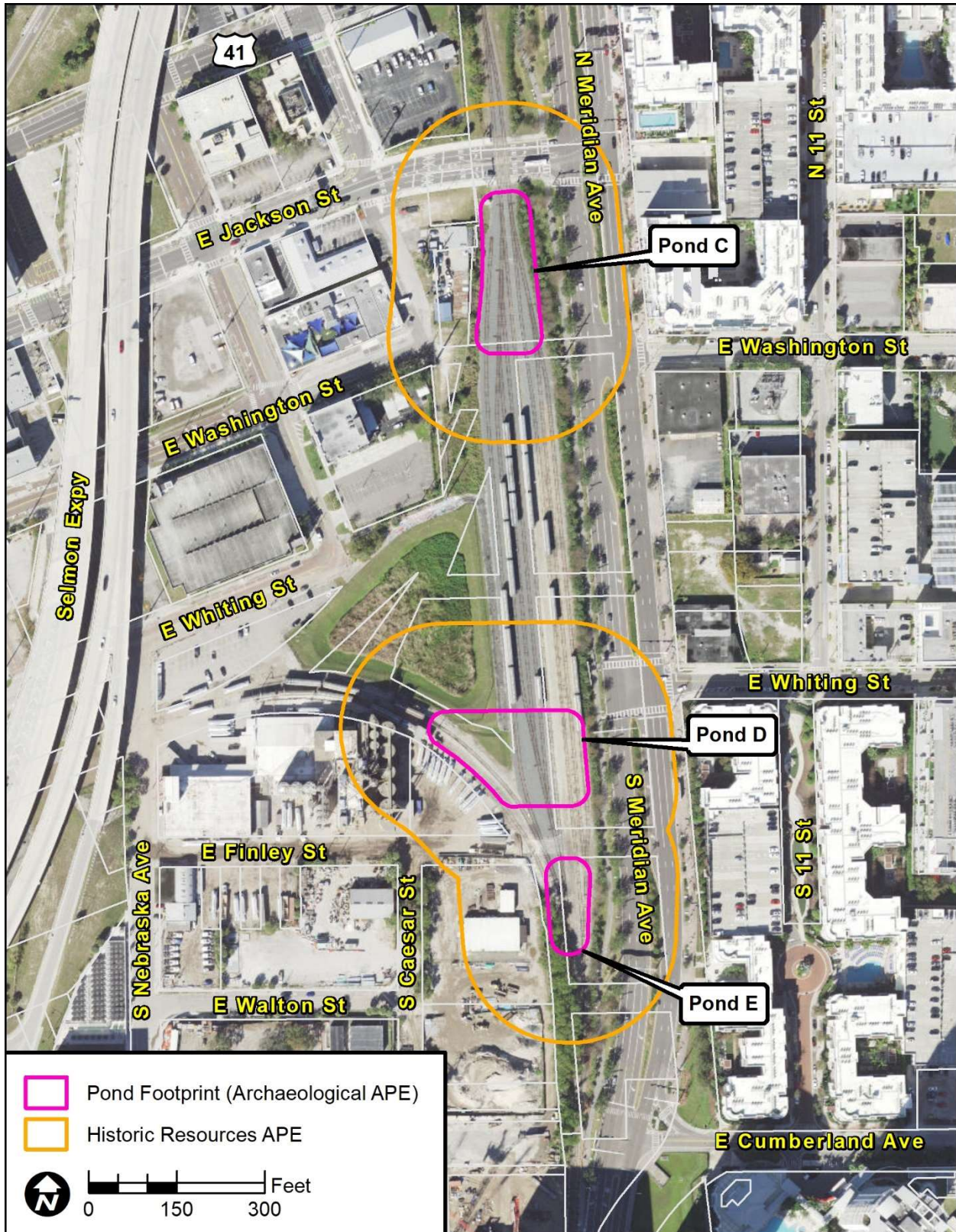


Figure 2.1: Project APE Illustrated on Aerial Mapping

3.0 Environmental Setting

Details regarding the paleoenvironment and macro-vegetational change within Florida, as well as a summary of the regional environment can be referenced in the 2021 CRAS report (Janus Research 2021) and therefore, this information is not repeated in this addendum report.

3.1 Physical Environment of the Project Area

Ponds C, D, and E are located within an industrial area of Tampa that primarily contains the Florida Central & Peninsular Railroad (8HI11987) and small areas of modified surrounding land. The project area has been heavily urbanized for many years, rendering present-day environmental variables of little value in evaluating the potential for encountering precontact period sites. The earliest soil survey can, however, provide information regarding the pre-development soils and archaeological potential. Therefore, the 1918 *Soil Survey of Hillsborough County* (Mooney et al. 1918) was reviewed. The soil survey indicated that in 1918, the project area contained areas of Norfolk fine sand (Pond C) and made land (Ponds D and E). Areas of Norfolk fine sand were excessively drained and found in uplands through the central part of the county in a northwest to southeast direction. The top 6 inches of soil are described as a light grey to yellowish grey fine sand followed by a pale yellow to bright yellow sand to over 3 feet in depth (Mooney et al. 1918:19). In lower lying areas of this soil type, the top layer is darker grey sand to a depth of 12 inches. This soil is described as undulating to ridged and hummocky, with some areas that are gently undulating to nearly flat. The 1918 soil survey described the areas of made land as artificially raised areas of former low marsh or land covered by shallow water near the edges of the bay in Tampa, that have been filled with materials resulting from the dredging channels and slips to docks (Mooney et al. 1918:39), 20th century soil surveys of Hillsborough County either did not map the urban areas of Tampa (USDA 1958:9) or identified the soils within the entire project area as urban land (covered by hardscape, buildings or structures) (USDA 1989:48).

3.1.1 Land Use

Historic maps and aerial photographs were analyzed to understand the historic land use within the project area and to help inform the archaeological potential of the project area.

3.1.1.1 General Land Office (GLO) Maps and 19th Century Maps of Fort Brooke

A review of the 1852 GLO historic plat maps and surveyors' field notes (Florida Department of Environmental Protection [FDEP] 1852a, 1852b) was conducted to identify precontact period or fort related features and past environmental conditions within the APE. The plat map depicts the project area within the Fort Brooke Military Reserve, over 400 feet south of an east-west traveling unnamed road to the north of Hillsborough Bay. While the 1852 plat map does not depict any environmental features within the military reserve, the surveyors notes describe the area along the Section line to the west as 'generally 3rd rate scrub'. The surveyor's notes for the northern section line stop at the Military Reserve, without describing any environmental characteristics within the reserve itself. The closest environmental features to the project area, approximately 0.4 miles to the northeast, are described as marsh and creek. No hammocks were

illustrated or described near the project area . No details of the fort period structures or layout were noted, nor were any features indicative of the precontact period illustrated or described within the project area.

Available 19th Century maps of Fort Brooke, an in-house overlay map of Fort Brooke-period features created by Piper and Piper in the 1970s and 1980s (Piper and Piper 1979, 1980, 1982; Janus Research/Piper Archaeology 1993), and georeferenced mapping of Fort Brooke-period features from 1876, 1877, and 1882 prepared by Cardno (2017:33–35), show no fort related features within or adjacent to Ponds C, D, or E. In addition, a review of this mapping identified no known cemeteries in close proximity to the project area. More detailed information related to the creation of the overlay and georeferenced mapping is included in the 2017 and 2021 CRAS documents, and therefore, is not repeated within the current report.

3.1.1.2 Sanborn Fire Insurance Maps

The only available Sanborn Fire Insurance maps that include the project area are from 1915 and 1931 (Sanborn Map Company 1915, 1931). These maps were reviewed to help understand land use over time and the intensity of past construction and demolition activities. This information can help inform archaeological site potential, as areas that have experienced repeated episodes of construction and demolition are less likely to contain undisturbed archaeological deposits.

The project area is centered on railroad tracks between Jackson Street at the north and Cumberland Avenue at the south end. As seen in **Figure 3.1**, the project area in 1915 was largely developed with tracks associated with the railroad already present, several of which branched out from the north-south mainline as spurs. Several buildings were in existence within the southern end of the project area where the proposed Ponds D and E are located. These included a one-story wood-frame school, several one-story wood-frame dwellings, and the one-story wood-frame with brick veneer Hampton & Buerke Engineers & Electricians building. The northern end of the project area, near the location of proposed Pond C, was also heavily developed with railroad tracks and featured several one-story wood-frame dwellings or storage buildings in the immediate vicinity.

By 1931, increased residential development occurred within the south end of the project area (**Figure 3.2**). The one-story wood-frame dwellings and school, now known as the Caesar Street School, that were observed in 1915 are still visible, as well as additional one-story wood-frame dwellings. In the 1931 map the Caesar Street School is noted as a segregated school for African American students. A one-story wood-frame roofing company is noted, as are several wood-frame wagon storage buildings, as well as a and a wood-frame Church designated as used by African American residents. Although primarily outside of the current project area, these resources east of Nebraska Avenue and south of Finley Street were located in the area of the Garrison Neighborhood, a former African American neighborhood, adjacent to the western border of the APE.

The Garrison Neighborhood likely earned its name from its location within the former Fort Brooke property, known locally as “the Garrison”, or for its proximity to Garrison Avenue, which was later renamed as Cumberland Avenue. The Garrison Neighborhood was settled by several African American homesteaders and platted between 1895 and 1897 and featured residences and commercial properties. The neighborhood represented one of the few owner occupied African American sections of Tampa at the time (Kite-Powell 2020). The Garrison Neighborhood was roughly bounded by Meridian Avenue on the east, Eunice Street on the south, Nebraska Avenue on the west, and Whiting Street to the north.

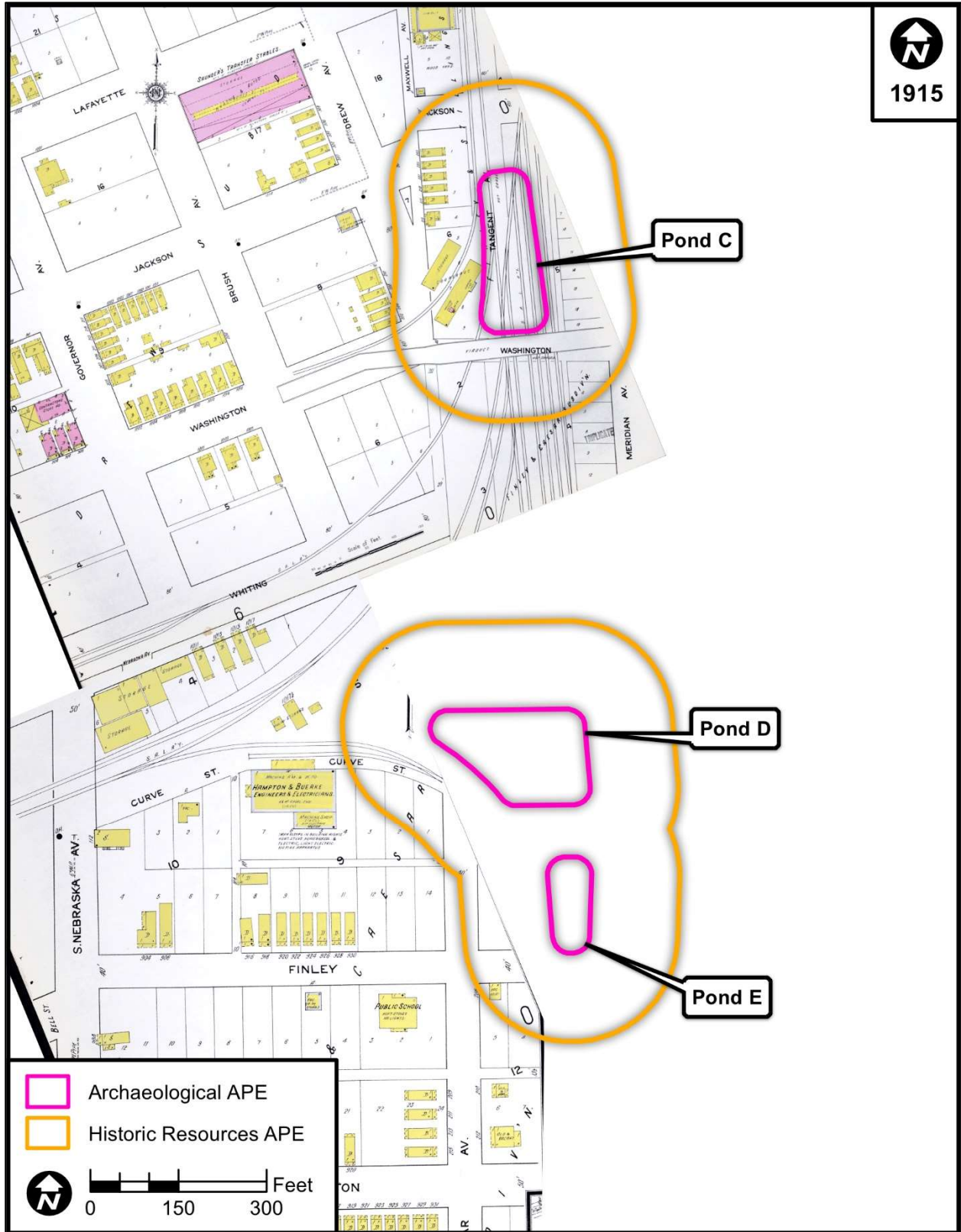


Figure 3.1: Approximate Location of Ponds C, D, and E on Available Sanborn Fire Insurance Maps from 1915

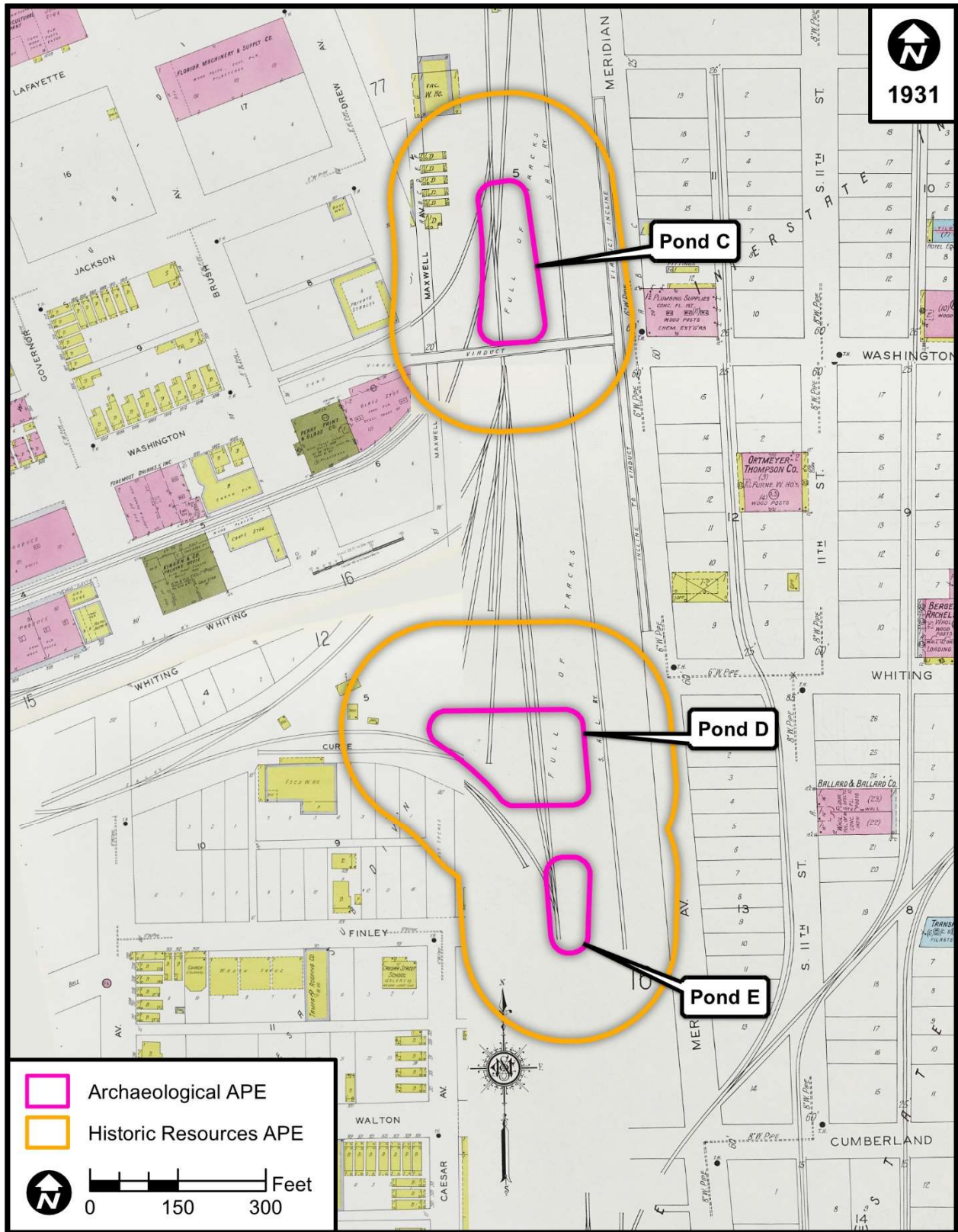


Figure 3.2: Approximate Location of Ponds C, D, and E on Available Sanborn Fire Insurance Maps from 1931

Several of the one-story dwellings observed at the north end of the project area in 1915 are still present in 1931, as are the five-story brick Perry Paint and Glass Company Building and a nearby private stable. The rest of the project area is developed with rail lines and viaducts which allow residents to cross over the rail. Expansions and additions to the railroad system are also noticeable on the 1931 Sanborn map.

3.1.1.3 Aerial Photographs

Aerial photographs from 1938, 1957, 1965, 1973, 1975, 1976, 1980, 1984, 1987, 1991, and 1995 (University of Florida, George A. Smathers Libraries 2021; FDOT, Office of Surveying and Mapping 1996–2021) were also reviewed to provide information on land use and the general nature of development within the project area. The location of the project APE is illustrated on select aerials ranging from 1938 through 1975 in **Figures 3.3–3.5**. The early aerials do not have sufficient clarity to allow a detailed discussion of the nature of the buildings present in the project area but do provide information on the density of development within the project area, and the general trend toward more commercial and industrial development. The 1938 aerial shows a comparable density to the 1931 Sanborn map throughout the project area and no hammock vegetation is visible within the project area. By 1957, the general trend towards more commercial and industrial development is evident as several formerly vacant lots have been developed with buildings with large square footprints. A few scattered residences remain, primarily in that part of the project area adjacent to Nebraska Avenue and north of the former Garrison Neighborhood. The area north of Finley Street contains warehouses, the railroad spur, and associated rail yards. By 1975, the project area continued to be developed as a commercial and industrial area, and few single family dwellings are noticeable in the vicinity of the project area.

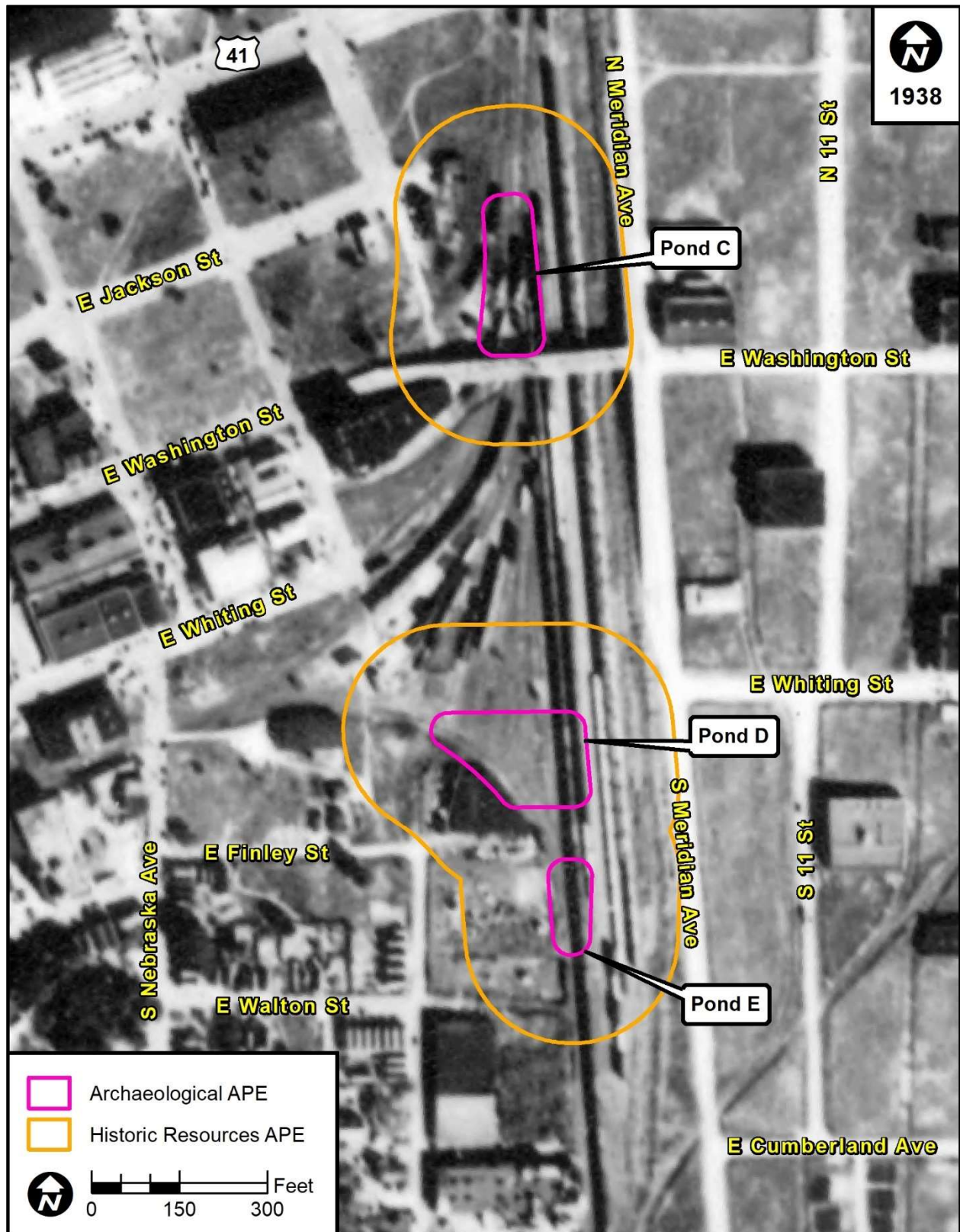


Figure 3.3: Approximate Location of Ponds C, D, and E on a 1938 Historic Aerial Photograph

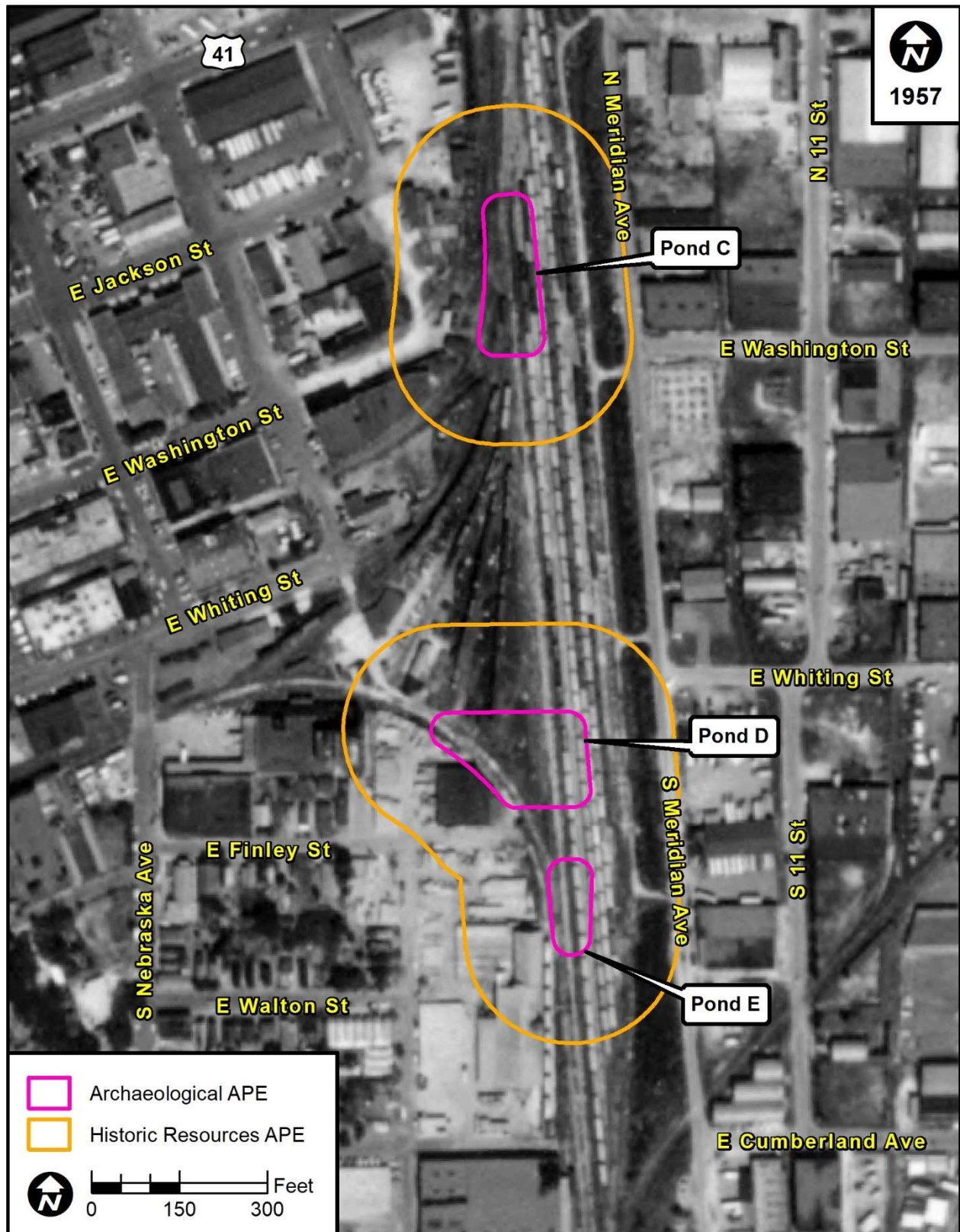


Figure 3.4: Approximate Location of Ponds C, D, and E on a 1957 Historic Aerial Photograph

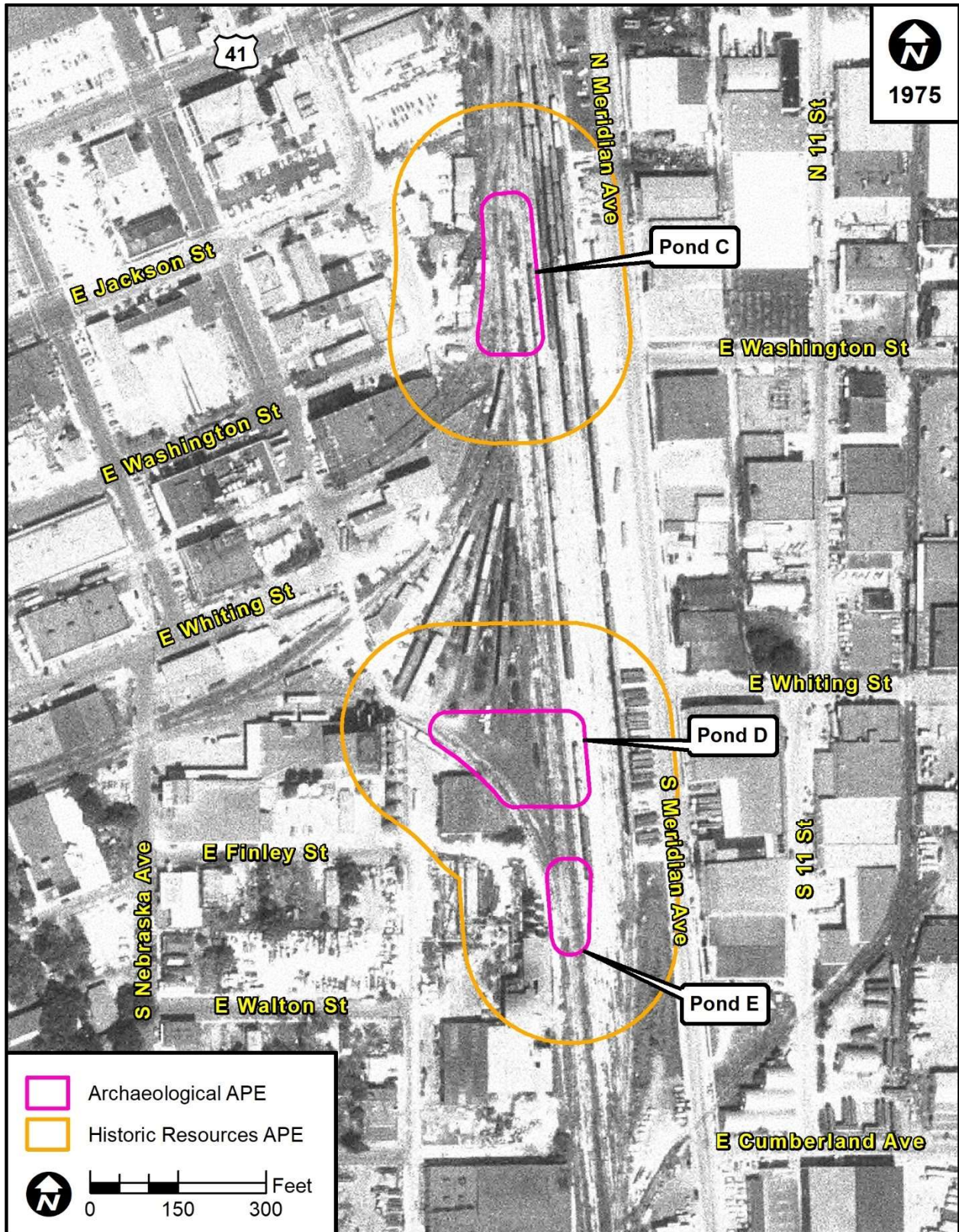


Figure 3.5: Approximate Location of Ponds C, D, and E on a 1975 Aerial Photograph

4.0 Precontact and Historic Period Cultural Overviews

A precontact overview and historic context were included in the *Whiting Street PD&E Study Cultural Resource Assessment* (Janus Research 2021). As Ponds C, D, and E are in the same general area that was addressed in the CRAS report, this information is not repeated in the current addendum document.

5.0 Florida Master Site File Search and Literature Review

A review of the Florida Master Site File and Hillsborough County property appraiser data was conducted to determine the potential for cultural resources within the APE of Ponds C, D, and E that are listed, eligible, or considered eligible for listing in the National Register, or that have potential or confirmed human remains. The FMSF is an important planning tool that assists in identifying potential cultural resources issues and resources that may warrant further investigation and protection. It can be used as a guide but should not be used to determine the official position of the SHPO/FDHR regarding the significance of a resource.

5.1 Previously Conducted Cultural Resource Surveys

The FMSF search identified five previously conducted cultural resource surveys that either contained or partially containing the APE associated with the proposed ponds (Table 5.1), including the 2021 CRAS. While there is some overlap, none of these surveys included a recent comprehensive survey of the entirety of the current project APE. Additional information regarding these previous surveys is included in the 7.1 *Previously Conducted Cultural Resource Surveys* section of the 2021 Janus Research CRAS.

Table 5.1: Previous Surveys Containing or Partially Containing the Project Area

FMSF Manuscript No.	Title	Author(s)	Date
1501	Tampa Urban Design Preservation Plan	Historic Tampa/Hillsborough County Preservation Board	1987
5409	Hillsborough County Historic Resources Survey Report	Hillsborough County Planning & Growth Management	1998
6034	CRAS of the Lee Roy Selmon Crosstown Expressway Capacity Improvement Project	Janus Research	2000
6513	Tampa Rail Project, Cultural Resource Reconnaissance Study	Janus Research	2001
Not Yet Assigned	Whiting Street PD&E Study, Cultural Resource Assessment Survey	Janus Research	2021

5.2 Previously Recorded Archaeological Resources

A search of the FMSF data identified one previously recorded archaeological site, the Fort Brooke Military reservation (8HI13), within and near the proposed pond sites (Figure 5.1). The Fort Brooke Military Reservation (8HI13) is a Second and Third Seminole War-era fort and cantonment that was occupied by the U.S. military from 1824–1883. This site has been previously determined National Register-eligible by the SHPO. The recorded boundaries of the fort in the FMSF are an approximation of the cantonment, which was roughly bounded by Whiting Street to the north, Tampa Bay to the south, the Hillsborough River to the west, and a large marsh to the east proximate to the current location of Ybor Channel. It is important to

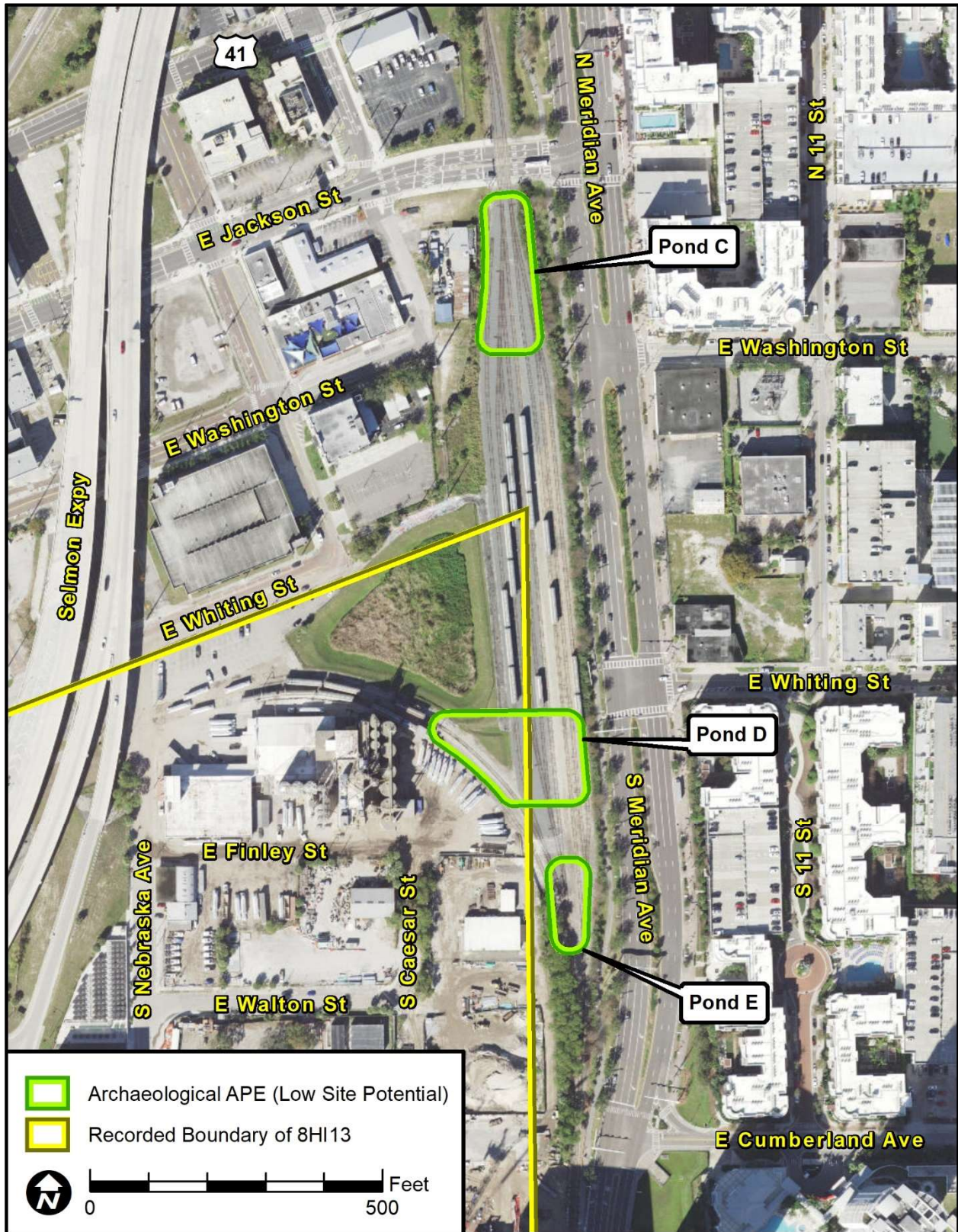


Figure 5.1: Previously Recorded Archaeological Sites Within and Near the Archaeological APE and Site Potential Zones

note that the pond sites are outside of the main activity area associated with the fort and no significant archaeological components associated with the Fort Brooke Military Reservation have been recorded in the vicinity of the archaeological APE. No previously recorded human remains are recorded in or adjacent to Ponds C, D, or E.

5.3 Previously Recorded and Potential Historic Resources

The FMSF background search identified four previously recorded historic resources within the historic resources APE consisting of three buildings, Perry Paint and Glass Company Building (8HI685), 1201 East Jackson Street (8HI5616), and Ardent Mills (8HI15084), and one railroad segment, the Florida Central & Peninsular Railroad (8HI11987). Three of the previously recorded resources (8HI685, 8HI11987, and 8HI15084), or the parcels containing the resources, are intersected by the historic resources APE surveyed as part of this addendum. All three previously recorded resources were documented in the FMSF as part of the 2021 CRAS and were considered National Register-eligible. The SHPO/FDHR concurred with the evaluations of National Register-eligibility for all three previously recorded historic resources on October 22, 2021 (**Appendix A**). The fourth previously recorded resource, 1201 East Jackson Street (8HI5616), was observed during the field review as having been demolished. Analysis of available aerial photographs revealed that the building at 1201 East Jackson Street was removed between 1995 and 1998. The FMSF will be notified of the demolition status of this resource.

The Hillsborough County Property Appraiser data and GIS information was utilized in order to identify unrecorded parcels within the current historic resources APE with actual year built (AYRB) dates of 1974 or prior. One identified parcel is included within the historic resources APE with an AYRB date of 1974 or earlier: 205 N Brush Street (1946). The parcel was subject to field review and necessary FMSF forms were completed for all identified historic resources. A review of aerial photographs from 1938, 1957, 1965, 1973, and 1975 (University of Florida, George A. Smathers Libraries 2021; FDOT, Office of Surveying and Mapping 1996-2021) was conducted to identify any additional extant unrecorded historic resources located within the historic resources APE. No additional historic buildings, bridges, cemeteries, railroads, canals, or potentially unrecorded historic linear resources or resource groups were identified within the historic resources APE as a result of the aerial analysis.

6.0 Project Research Design and Site Location Model

Although a discussion of environmental features is typically important in the development of zones of archaeological site potential, these variables are less important within urban environments where the natural environment has been considerably altered. Archaeological site potential is better informed by historical land use, as well as the results of previous archaeological investigations within and proximate to the APE. Historic maps and aerials confirmed that the APE is not within the main activity areas associated with Fort Brooke nor are the ponds within the Garrison neighborhood, areas which, despite development, were identified in the 2021 CRAS as having archaeological potential. Although the surrounding area historically contained residential and commercial buildings, none of this development extended into the archaeological APE. The archaeological APE is also to the northeast of locations where major components of precontact periods sites have been identified. The review of early soil survey data suggests Ponds D and E are located within areas of filled and modified land. In addition, the review of prior land use indicates that all of the ponds are centered on an existing railroad, which has been in existence since the late-1800s. The construction of the railroad, as well as its expansion over time, further limits the archaeological potential of the ponds. Based on these factors, the archaeological APE is considered to have a low potential for intact significant archaeological sites (see **Figure 5.1**).

7.0 Methods

7.1 Archaeological Field Methods

The archaeological survey consisted of a pedestrian survey to document the modified nature of the APE and confirm that testing was not feasible due to the presence of the railroad, a drainage ditch, and a modified embankment associated with a borrow pit. Photographs were taken to document the existing conditions.

7.2 Historic Resources Survey Methods

A historic resources field survey was conducted to identify and record each resource built during or prior to 1974 within the historic resources APE was identified, mapped, and photographed. The historic resources survey used standard field methods to identify any historic resources. Any resources within the APE received a preliminary visual reconnaissance and any resource with features indicative of 1974 or earlier construction materials, building methods, or architectural styles was photographed and noted on an aerial photograph.

For each newly identified resource, forms were filled out with field data, including notes from site observations and research findings. The estimated dates of construction, distinctive features, and architectural styles were noted. The information contained on any form completed for this project was recorded onto a digital form at Janus Research. Photographs were taken with a high-resolution digital camera. A log was kept to record the resource's physical location and compass direction of each photograph. FMSF forms were prepared for all identified historic resources and are included in **Appendix B**.

Each resource's individual significance was then evaluated for its potential eligibility for inclusion in the National Register. Historic physical integrity was determined from site observations, field data, and photographic documentation. Each resource's present condition, location relative to other resources, and distinguishing neighborhood characteristics were observed in order to accurately assess National Register Historic District eligibility.

8.0 Results

8.1 Archaeological Survey Results

The archaeological survey resulted in the identification of no archaeological sites or archaeological occurrences with the proposed pond sites, and confirmed the low archaeological potential of the archaeological APE. No shovel testing was feasible within the APE due to the presence of existing rail corridor, modified embankment, and drainage ditching. Representative photographs of the existing conditions within the archaeological APE are included for reference in **Figures 8.1–8.3**.



Figure 8.1: Existing Railway Corridor Containing Associated Gravel Ballast, Tracks, and Ties, Preventing Subsurface Testing Within Pond C, Facing South



Figure 8.2: Modified Embankment, Drainage Ditch, and Existing Railway Corridor Containing Associated Gravel Ballast, Tracks, and Ties, Preventing Subsurface Testing Within Pond D, Facing North



Figure 8.3: Existing Railway Corridor Containing Associated Gravel Ballast, Tracks, and Ties, Preventing Subsurface Testing Within Pond E, Facing North

8.2 Historic Survey Results

Four historic resources were identified as part of the addendum's historic resources survey: the previously recorded Perry Paint and Glass Company Building (8HI685), the Florida Central & Peninsular Railroad (8HI11987), Ardent Mills (8HI15084), and the newly recorded Carlton Academy Day School (8HI15085). The previously recorded resources, or parcels containing the resources, are intersected by the historic resources APE of this addendum. The three previously recorded resources were documented in the FMSF as part of the 2021 CRAS and were considered National Register-eligible. The SHPO/FDHR concurred with the evaluations of National Register eligibility for all three previously recorded historic resources on October 22, 2021 (**Appendix A**). Due to the recent recordation in the FMSF and evaluation of eligibility by the SHPO/FDHR in October 2021, the FMSF forms for the previously recorded resources were not updated during the course of this addendum report. The three previously recorded resources (8HI685, 8HI11987, 8HI15084) are discussed in detail in the previous 2021 CRAS associated with the Whiting Street PD&E Study.

The Carlton Academy Day School (8HI15085) is a circa 1946 Masonry Vernacular school building which features numerous additions and alterations, exhibits a common style found in Central Florida, and lacks known historical associations. Therefore, it is considered National Register-ineligible under Criteria A, B, C or D. An FMSF form was completed for the newly identified historic resource and is included in **Appendix B**. **Figure 8.4** depicts the locations of the identified historic resources within the historic resources APE and a narrative description of the newly identified historic resource (8HI15085) is included below.

8.2.1 8HI15085 - Carlton Academy Day School

The circa 1946 Masonry Vernacular style structure located at 205 N Brush Street is in Section 19 of Township 29 South, Range 19 East, on the Tampa (1956 PR 1981) USGS quadrangle map in the city of Tampa, Hillsborough County, Florida (**Figure 8.5**). The original block of the building is located on the east portion of the parcel and features a L-shaped shaped concrete block structure with a flat roof of built up material. This original block is comprised of a two-story section along the north parcel line and one-story section along the east parcel line. A one-story circa 1960 addition is located on the west façade of the northern section, forming the current northwest corner of the building. A two-story circa 1960 addition is located in the interior of the northeast corner of the structure, connecting to a portion of the original two-story section of the building. Both of these additions feature concrete block structural systems with flat roofs.

A one-story circa 1960 concrete block addition is located along the southern parcel line, with a shed roof of built up material. These three additions extended the building's footprint towards the west parcel line and create an asymmetrical horseshoe shaped plan (**Figure 8.6**). The open area within the building's footprint now serves as a courtyard and is used as a playground for the daycare which operates out of the building. Windows observed on the structure include metal fixed one-light and two-light windows, some of which are paired or grouped. A metal window wall is located on the west façade of the structure where the main entrance is located. The double door entrance is recessed into the west façade and accessed via a small concrete staircase. Decorative elements observed on the exterior of the structure include scored stucco panels, a stucco parapet at the roofline, stucco planter boxes, and wire mesh panels above windows. Only the scored stucco panels and parapet details are considered to be historic.

The structure at 205 N Brush Street exhibits a common architectural style found in Central Florida, and its original design is compromised by several additions which have altered the historic plan of the structure, and non-historic alterations including replaced exterior material, windows, and doors. Therefore, it is considered ineligible for listing in the National Register, individually or as part of a historic district.

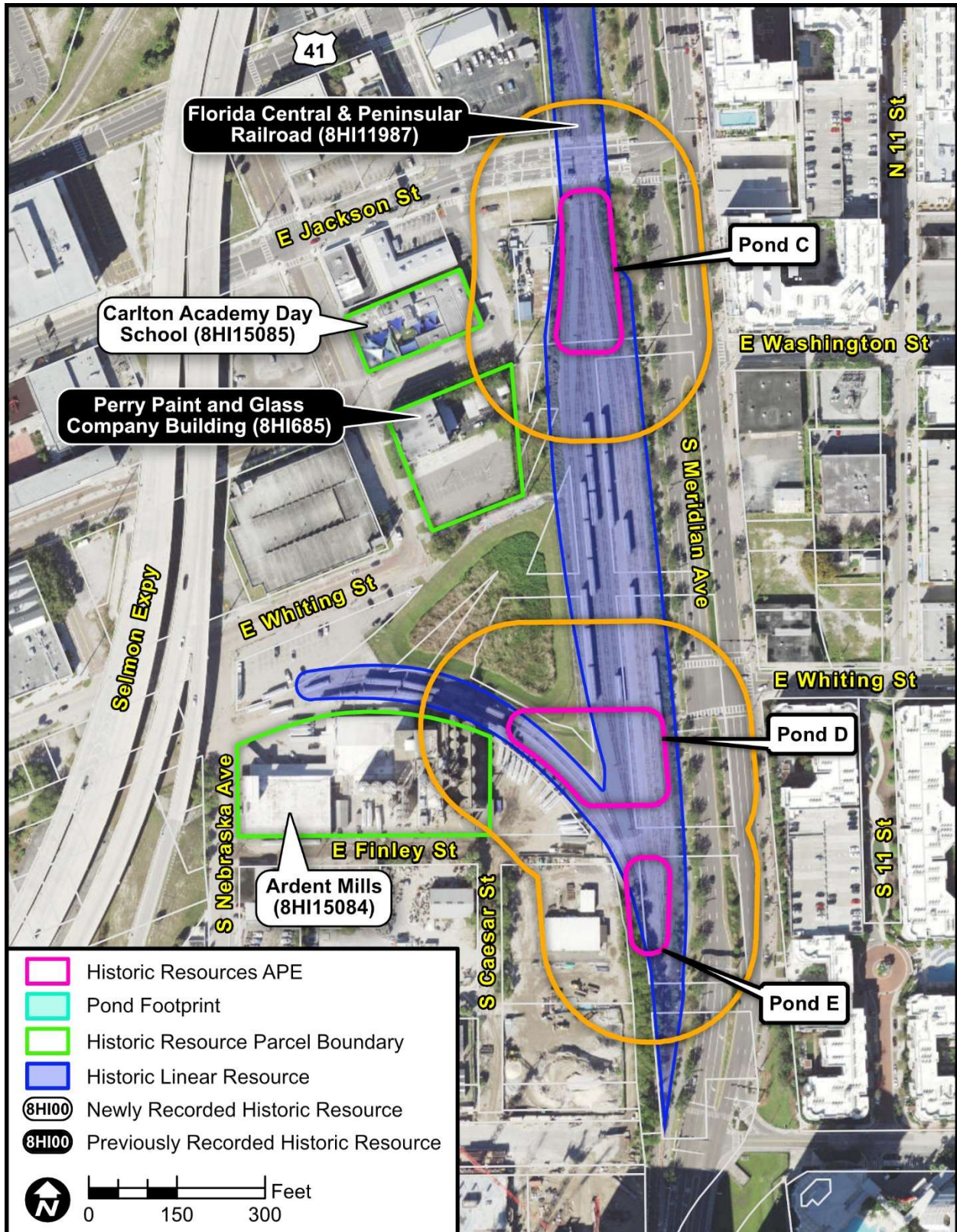


Figure 8.4: Identified Historic Resources within the Project APE

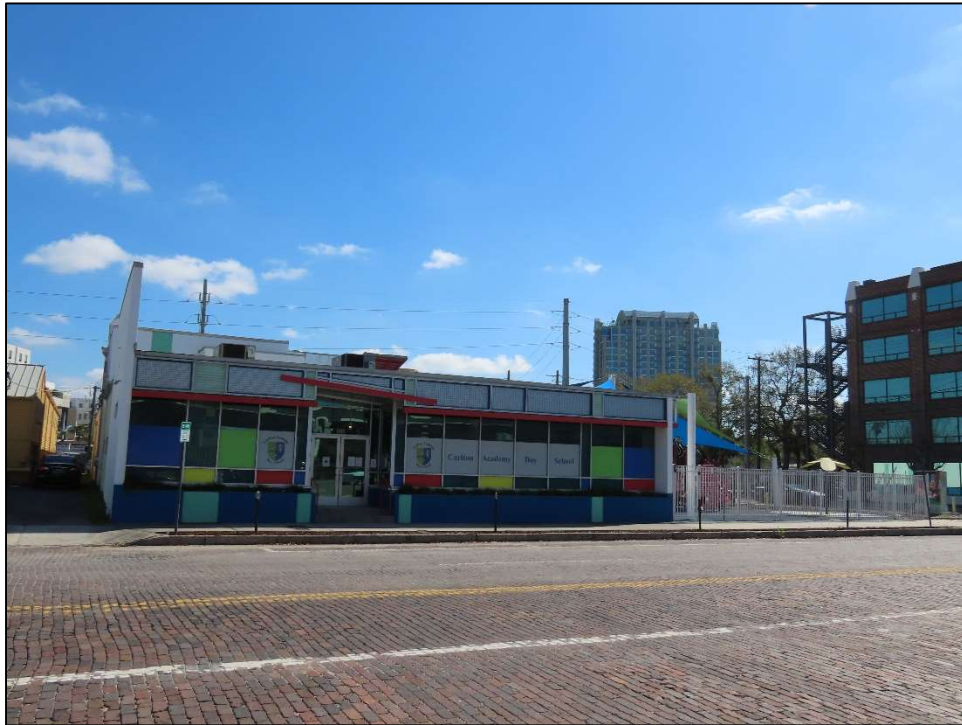


Figure 8.5: Carlton Academy Day School (8HI15085), c. 1946, located at 205 N Brush Street, considered National Register-eligible, facing East



Figure 8.6: Carlton Academy Day School (8HI15085), c. 1946, located at 205 N Brush Street, considered National Register-eligible, facing Northeast

9.0 Conclusions

As a result of the archaeological survey completed for the CRAS addendum, no archaeological sites or archaeological occurrences were identified within the proposed pond sites. No shovel testing was feasible within the APE due to the presence of existing rail corridor, modified embankment, and drainage ditching. Background research and the pedestrian survey determined that the archaeological APE exhibits low potential for intact significant archaeological sites. The background research also determined that, unlike the western end of the larger area investigated during the 2021 CRAS, Ponds C, D, and E are each located outside of the main activity area associated with Fort Brooke, and no significant archaeological components associated with the Fort Brooke Military Reservation have been recorded in the vicinity of the archaeological APE. In addition, the background research noted that no previously recorded human remains are recorded in or adjacent to Ponds C, D, or E.

Four historic resources were identified within the historic resources APE: the previously recorded Perry Paint and Glass Company Building (8HI685), the Florida Central & Peninsular Railroad (8HI11987), Ardent Mills (8HI15084), and the newly recorded Carlton Academy Day School (8HI15085). The three previously recorded resources were documented in the FMSF as part of the 2021 CRAS and were considered National Register-eligible. Due to the recent recordation in the FMSF and evaluation of all three resources as National Register-eligible by the SHPO/FDHR in October 2021, the FMSF forms for the previously recorded resources were not updated during this addendum report.

The newly recorded resource, Carlton Academy Day School (8HI15085), is a circa 1946 Masonry Vernacular school building which features numerous additions and alterations, exhibits a common style found in Central Florida, and lacks known historical associations. Therefore, it is considered National Register-ineligible under Criteria A, B, C or D.

9.1 Unanticipated Finds and Human Remains

Should construction activities uncover archaeological remains, it is recommended that activity in the immediate area of the remains be stopped while a professional archaeologist evaluates the remains. Should any suspected or known remains be identified during this project, the provisions of Chapter 872.05, *F.S.* will apply. Chapter 872.05, *F.S.* states that when human remains are encountered, all activity that might disturb the remains shall cease and may not resume until authorized by the District Medical Examiner or the State Archaeologist. If human remains less than 75 years are encountered, or if they are involved in a criminal investigation, the District Medical Examiner has jurisdiction. If the remains are judged to be more than 75 years old, then the State Archaeologist may assume jurisdiction. It is also recommended the appropriate construction personnel be notified of the provisions of Chapter 872.05, *F.S.*, as well as the need to immediately notify the THEA Project Manager if human remains are encountered, who will take the steps needed to protect the remains and notify the appropriate authorities.

9.2 Curation

The Survey Log (**Appendix C**), newly prepared site file forms (**Appendix B**), photographs, and a copy of this report are curated at the FMSF in Tallahassee. Field notes and other pertinent project records are temporarily stored at Janus Research and returned to the client, as appropriate.

10.0 References Cited

Cardno

2017 Archaeological Investigations at Project Area I, SPP Archaeological Report No. 1. Manuscript on file, Florida Division of Historical Resources, Tallahassee.

Florida Department of Environmental Protection (FDEP)

1852a Surveyor's Notes for Township 29 South, Range 19 East. Land Boundary Information System (LABINS). Land Records. Electronic document, https://www.labins.org/survey_data/landrecords/landrecords.cfm, accessed January 12, 2022.

1852b Survey Plat Map for Township 29 South, Range 19 East. Land Boundary Information System (LABINS). Land Records. Electronic document, https://www.labins.org/survey_data/landrecords/landrecords.cfm, accessed January 17, 2020.

Florida Department of Transportation (FDOT), Office of Surveying and Mapping

1996-2021 Aerial Photography Archive. Electronic documents, <https://fdotewp1.dot.state.fl.us/AerialPhotoLookUpSystem/>, accessed March 10, 2021.

Janus Research/Piper Archaeology

1993 Archaeological Investigations at the Site of the Tampa Convention Center, Tampa, Florida, Vol. 2, Tampa, Florida. Manuscript on file, Florida Division of Historical Resources, Tallahassee.

Kite-Powell, Rodney

2020 "Harbour Island: A Tampa Neighborhood's History." Tampa Magazine, May 2020. Accessed online at <https://tampamagazines.com/harbour-island-a-tampa-neighborhoods-history/>

Mooney, Charles N., T.M. Morrison, Grove B. Jones, E.C. Hall, and N.M. Kirk

1918 Soil Survey of Hillsborough County, Florida. U.S. Department of Agriculture, Bureau of Soils. Electronic document, <https://www.nrcs.usda.gov/wps/portal/nrcs/surveylist/soils/survey/state/?stateld=FL>, accessed January 7, 2022.

Piper, Harry and Jacqueline Piper

1979 Preliminary Report of Archaeological Testing for the Fort Brooke Hospital/Kitchen Complex. Manuscript on file, Janus Research

1980 Final Report of Archaeological Testing for the Fort Brooke Hospital/Kitchen Complex. In the Impact Area of the City of Tampa Parking Garage. Manuscript on file, Janus Research

1982 Archaeological Excavations of the Quad Block Site, 8HI998 Located at the Site of Old Fort Brooke Municipal Parking Garage, Tampa, Florida Manuscript on file, Janus Research

Sanborn Map Company

1915 Tampa, Hillsborough County, Florida, 1915. Insurance Maps of Tampa, Florida. Electronic documents, <https://ufdc.ufl.edu/UF00074232/00009/>, accessed January 12, 2022.

1931 Insurance Maps of Tampa, Florida, 1931. Electronic documents, <https://ufdc.ufl.edu/AA00041226/00001/>, accessed January 12, 2022.

United States Department of Agriculture (USDA)

1958 Soil Survey, Hillsborough County, Florida. Electronic document, Electronic document, https://www.nrcs.usda.gov/Internet/FSE_MANUSCRIPTS/florida/hillsboroughFL1958/hillsboroughFL1958.pdf, accessed January 7, 2022.

1989 Soil Survey of Hillsborough County, Florida. Electronic document, https://www.nrcs.usda.gov/Internet/FSE_MANUSCRIPTS/florida/FL057/0/hillsborough.pdf, accessed January 7, 2022.

University of Florida, George A. Smathers Libraries

2021 Aerial Photography: Florida Collection. University of Florida Digital Collections. Electronic documents, <http://ufdc.ufl.edu/aerials/>, accessed March 5, 2021.

Appendices



Appendix A

SHPO/FDHR Concurrence Letter, October 22, 2021



August 24, 2021

Timothy A. Parsons, Ph.D.
Director, Division of Historical Resources, and
State Historic Preservation Officer
R.A. Gray Building
500 S. Bronough Street
Tallahassee FL 32399-0250

Attention: Alyssa McManus, Transportation Compliance Review Program

Re: Cultural Resource Assessment Survey for the Tampa Hillsborough Expressway Authority (THEA) Whiting Street Project Development & Environment Study (PD&E) Study, Hillsborough County, Florida

Dear Dr. Parsons,

The cultural resource assessment survey (CRAS) of the Tampa Hillsborough Expressway Authority (THEA) Whiting Street PD&E Study in Hillsborough County, Florida, was conducted for the THEA by Janus Research, in association with H.W. Lochner, Inc. (LOCHNER). Fieldwork for this CRAS was conducted in 2021. The CRAS of the project was conducted to identify cultural resources within the project area of potential effect (APE) and to assess their significance in terms of their eligibility for listing in the *National Register of Historic Places* (National Register) according to the criteria set forth in 36 CFR Section 60.4.

This assessment complies with the revised Chapter 267, *Florida Statutes (F.S.)* and the standards embodied in the Florida Division of Historical Resources' (FDHR's) *Cultural Resource Management Standards and Operational Manual* (February 2003) and Chapter 1A-46 (*Archaeological and Historical Report Standards and Guidelines*), *Florida Administrative Code*. In addition, this report was prepared in consideration of the standards set forth in Part 2, Chapter 8 (*Archaeological and Historical Resources*) of the Florida Department of Transportation (FDOT) *PD&E Manual* (effective July 1, 2020). All work conforms to professional guidelines set forth in the *Secretary of Interior's Standards and Guidelines for Archaeology and Historic Preservation* (48 FR 44716, as amended and annotated). Principal Investigators meet the *Secretary of the Interior's Professional Qualification Standards* (48 FR 44716) for archaeology, history, architecture, architectural history, or historic architecture.

As a results of the CRAS, one precontact period archaeological site and four historic resources were identified. Due to the density of development and underground utilities, archaeological subsurface testing was feasible only within portions of the archaeological APE within the area of the Florida Avenue loop ramp. No human remains or Fort Brooke period artifacts were identified during the limited testing. Eight shovel tests resulted in the identification and expansion of the boundaries of 8HI537 (Expressway End) throughout

the western end of the current APE. Subsurface testing yielded both precontact period lithic artifacts and historic 20th Century material. Most of the lithic artifacts consisted of non-diagnostic flakes and shatter, but the presence of a fragment of a Florida Archaic Stemmed point suggests an Archaic to Formative period association. The majority of the historic artifacts recovered during the subsurface testing were also non-diagnostic. The two diagnostic artifacts, a solarized glass fragment and a green bottle base fragment suggest a 20th Century component. The artifacts recovered during the testing suggest a similarity to other precontact period lithic scatters and 20th Century artifact scatters in downtown Tampa that have previously been evaluated as National Register–ineligible. However, the extent of this site within the APE is unknown as underground utilities, landscaping, and hardscape prevented additional testing to bound the site and determine if any associated features are present. Based on this, there is insufficient information to evaluate the National Register eligibility of 8HI537 within the archaeological APE

Because subsurface testing was not feasible or limited in identified high and moderate archaeological site potential zones, archaeological monitoring will be conducted in these areas during ground disturbing construction activities. Where feasible, subsurface shovel testing will also be conducted. Examples of conditions allowing for the excavation of shovel tests include the removal of existing hardscape preventing testing or the mechanical stripping of areas of fill down to natural ground levels. This commitment will be added to the project construction plans to ensure that it is acknowledged and addressed during project construction.

Four historic resources were identified within the historic resources APE, three of which are considered National Register–eligible: an unrecorded segment of the Florida Central & Peninsular Railroad (8HI11987), the previously recorded Perry Paint and Glass Company Building (8HI685), and Ardent Mills (8HI15084). The 2,585-foot segment of the Florida Central & Peninsular Railroad (8HI11987) is considered eligible for listing in the National Register under Criterion A in the areas of Community Planning & Development, Industry, and Transportation. The Perry Paint and Glass Company Building (8HI685) is considered National Register–eligible under Criterion A in the areas of Industry and Local History and Criterion C in the area of Architecture. Ardent Mills (8HI15084) is considered National Register–eligible under Criterion A in the areas of Industry and Local History. The fourth resource, 200 S Nebraska Avenue (8HI15083) is considered National Register-ineligible due to its common style and diminished integrity.

Although no human remains were identified during the CRAS, unmarked graves have been previously found near the project area and there remains a potential for unmarked graves throughout the project area. Should any suspected or known remains be identified during this project, the provisions of Chapter 872.05, *F.S.* will apply. Chapter 872.05, *F.S.* states that when human remains are encountered, all activity that might disturb the remains shall cease and may not resume until authorized by the District Medical Examiner or the State Archaeologist. If human remains less than 75 years are encountered, or if they are involved in a criminal investigation, the District Medical Examiner has jurisdiction. If the remains are judged to be more than 75 years old, then the State Archaeologist may assume jurisdiction. It is also recommended the appropriate construction personnel be notified of the provisions of Chapter 872.05, *F.S.* as well as the need to immediately notify the THEA Project Manager if human remains are encountered, who will take the steps needed to protect the remains and notify the appropriate authorities.

We kindly request that this letter and document are reviewed, and concurrence is provided by your office. This information is provided in accordance with the provisions contained in the revised Chapter 267, F.S. If you have any questions regarding the subject project, please contact me at 813.272.6740, extension 124 or anna.quinones@tampa-xway.com.

Sincerely,



Anna Quiñones, AICP
Project Manager

The Florida Division of Historical Resources finds the attached document complete and sufficient and <input checked="" type="checkbox"/> concurs/ <input type="checkbox"/> does not concur with the recommendations and findings provided in this cover letter for SHPO/FDHR Project File Number <u>2021-5149</u> .	
Comments: Sites 8HI11987, 8HI685, and 8HI15084 are considered eligible for the National Register of Historic Places and should be avoided, or further consultation with the Florida SHPO office is required.	
Alissa Lotane <small>Digitally signed by Alissa Lotane DN: cn=Alissa Lotane, o=Florida Division of Historical Resources, ou=Deputy SHPO, email=alissa.lotane@fdhr.com, c=US Date: 2021.10.22 11:00:04 -0400</small>	10/22/2021
for Timothy A. Parsons, Ph.D., Director, and State Historic Preservation Officer Florida Division of Historical Resources	[DATE]

Cc: Bob Frey, AICP, THEA
Bill Howell, PE, HW Lochner
Govardhan Muthyalagari, PE, PTOE, HNTB

Appendix B

Florida Master Site File Forms



HISTORICAL STRUCTURE FORM

FLORIDA MASTER SITE FILE

Version 5.0 3/19

Site#8 **HI15085**
Field Date 2-23-2021
Form Date 2-24-2021
Recorder # 4

Original
 Update

Shaded Fields represent the minimum acceptable level of documentation.
Consult the *Guide to Historical Structure Forms* for detailed instructions.

Site Name(s) (address if none) Carlton Academy Day School Multiple Listing (DHR only) _____
Survey Project Name CRAS Ponds Addendum THEA Whiting St PD&E Study Survey # (DHR only) _____
National Register Category (please check one) building structure district site object
Ownership: private-profit private-nonprofit private-individual private-nonspecific city county state federal Native American foreign unknown

LOCATION & MAPPING

Street Number 205 Direction N Street Name Brush Street Type Street Suffix Direction _____
Address: _____
Cross Streets (nearest / between) NE corner of N Brush St at E Washington St
USGS 7.5 Map Name TAMPA USGS Date 1981 Plat or Other Map _____
City / Town (within 3 miles) Tampa In City Limits? yes no unknown County Hillsborough
Township 29S Range 19E Section 19 ¼ section: NW SW SE NE Irregular-name: _____
Tax Parcel # 185239-0000 Landgrant _____
Subdivision Name Drew's Addition to Tampa Block _____ Lot _____
UTM Coordinates: Zone 16 17 Easting 357338 Northing 3092387
Other Coordinates: X: _____ Y: _____ Coordinate System & Datum _____
Name of Public Tract (e.g., park) _____

HISTORY

Construction Year: 1946 approximately year listed or earlier year listed or later
Original Use Industrial From (year): 1946 To (year): 2007
Current Use Day care From (year): 2007 To (year): 2021
Other Use _____ From (year): _____ To (year): _____
Moves: yes no unknown Date: _____ Original address _____
Alterations: yes no unknown Date: 1-1-1990 Nature Replaced windows/doors
Additions: yes no unknown Date: 1-1-1960 Nature 1-story NW corner, SW corner; 2-story NE
Architect (last name first): Unknown Builder (last name first): Unknown

Ownership History (especially original owner, dates, profession, etc.)
Warehouse of Tampa Wholesale Plumbing Supplies c1950-1972; industrial uses c1972-c2007; c2007 began operating as current use of daycare/school

Is the Resource Affected by a Local Preservation Ordinance? yes no unknown Describe _____

DESCRIPTION

Style Masonry Vernacular Exterior Plan Irregular Number of Stories 2
Exterior Fabric(s) 1. Stucco 2. Window wall 3. _____
Roof Type(s) 1. Flat 2. Shed 3. _____
Roof Material(s) 1. Built-up 2. _____ 3. _____
Roof secondary strucs. (dormers etc.) 1. _____ 2. _____

Windows (types, materials, etc.)
Metal fixed one-light and two-light, some grouped or paired; metal window wall on W facade

Distinguishing Architectural Features (exterior or interior ornaments)
Scored stucco panels on exterior walls; parapet at roofline; non-historic wire mesh panels above windows on W facade; stucco planter boxes

Ancillary Features / Outbuildings (record outbuildings, major landscape features; use continuation sheet if needed.)
Central courtyard used as playground; metal fencing encloses portions of courtyard not enclosed by the building

DHR USE ONLY		OFFICIAL EVALUATION		DHR USE ONLY	
NR List Date _____	SHPO – Appears to meet criteria for NR listing: <input type="checkbox"/> yes <input type="checkbox"/> no <input type="checkbox"/> insufficient info	Date _____	Init. _____		
<input type="checkbox"/> Owner Objection	KEEPER – Determined eligible: <input type="checkbox"/> yes <input type="checkbox"/> no	Date _____			
	NR Criteria for Evaluation: <input type="checkbox"/> a <input type="checkbox"/> b <input type="checkbox"/> c <input type="checkbox"/> d (see <i>National Register Bulletin 15</i> , p. 2)				

DESCRIPTION (continued)

Chimney: No. 0 Chimney Material(s): 1. _____ 2. _____
 Structural System(s): 1. Concrete block 2. _____ 3. _____
 Foundation Type(s): 1. Continuous 2. _____
 Foundation Material(s): 1. Concrete Block 2. _____

Main Entrance (stylistic details)

Recessed entry on W facade, metal/glass double door accessed via small staircase

Porch Descriptions (types, locations, roof types, etc.)

Recessed entry porch on W facade; small staircase with concrete steps leads to entry under non-historic angled roof extension

Condition (overall resource condition): excellent good fair deteriorated ruinous

Narrative Description of Resource

Masonry vernacular building used as daycare/school with irregular plan w/ 3 c1960 additions: 1-story add in NW corner, 1-story add in SW corner & 2-story add in NE corner; some historic mid-century decorative detail remains including scored stucco

Archaeological Remains _____ Check if Archaeological Form Completed

RESEARCH METHODS (select all that apply)

- | | | | |
|--|---|---|--|
| <input checked="" type="checkbox"/> FMSF record search (sites/surveys) | <input type="checkbox"/> library research | <input type="checkbox"/> building permits | <input type="checkbox"/> Sanborn maps |
| <input type="checkbox"/> FL State Archives/photo collection | <input type="checkbox"/> city directory | <input type="checkbox"/> occupant/owner interview | <input type="checkbox"/> plat maps |
| <input checked="" type="checkbox"/> property appraiser / tax records | <input type="checkbox"/> newspaper files | <input type="checkbox"/> neighbor interview | <input type="checkbox"/> Public Lands Survey (DEP) |
| <input checked="" type="checkbox"/> cultural resource survey (CRAS) | <input type="checkbox"/> historic photos | <input type="checkbox"/> interior inspection | <input type="checkbox"/> HABS/HAER record search |
| <input checked="" type="checkbox"/> other methods (describe) <u>Aerial photography</u> | | | |

Bibliographic References (give FMSF manuscript # if relevant, use continuation sheet if needed)

OPINION OF RESOURCE SIGNIFICANCE

Appears to meet the criteria for National Register listing individually? yes no insufficient information
 Appears to meet the criteria for National Register listing as part of a district? yes no insufficient information

Explanation of Evaluation (required, whether significant or not; use separate sheet if needed)

This Masonry Vernacular school exhibits a common style found in Central Florida, additions which alter its historic plan, non-historic alterations, and no known historic associations. Therefore, it is considered to be National Register-ineligible.

Area(s) of Historical Significance (see *National Register Bulletin 15*, p. 8 for categories: e.g. "architecture", "ethnic heritage", "community planning & development", etc.)

1. _____ 3. _____ 5. _____
 2. _____ 4. _____ 6. _____

DOCUMENTATION

Accessible Documentation Not Filed with the Site File - including field notes, analysis notes, photos, plans and other important documents

- 1) Document type Field notes Maintaining organization Janus Research
 Document description _____ File or accession #'s _____
 2) Document type Field maps Maintaining organization Janus Research
 Document description _____ File or accession #'s _____

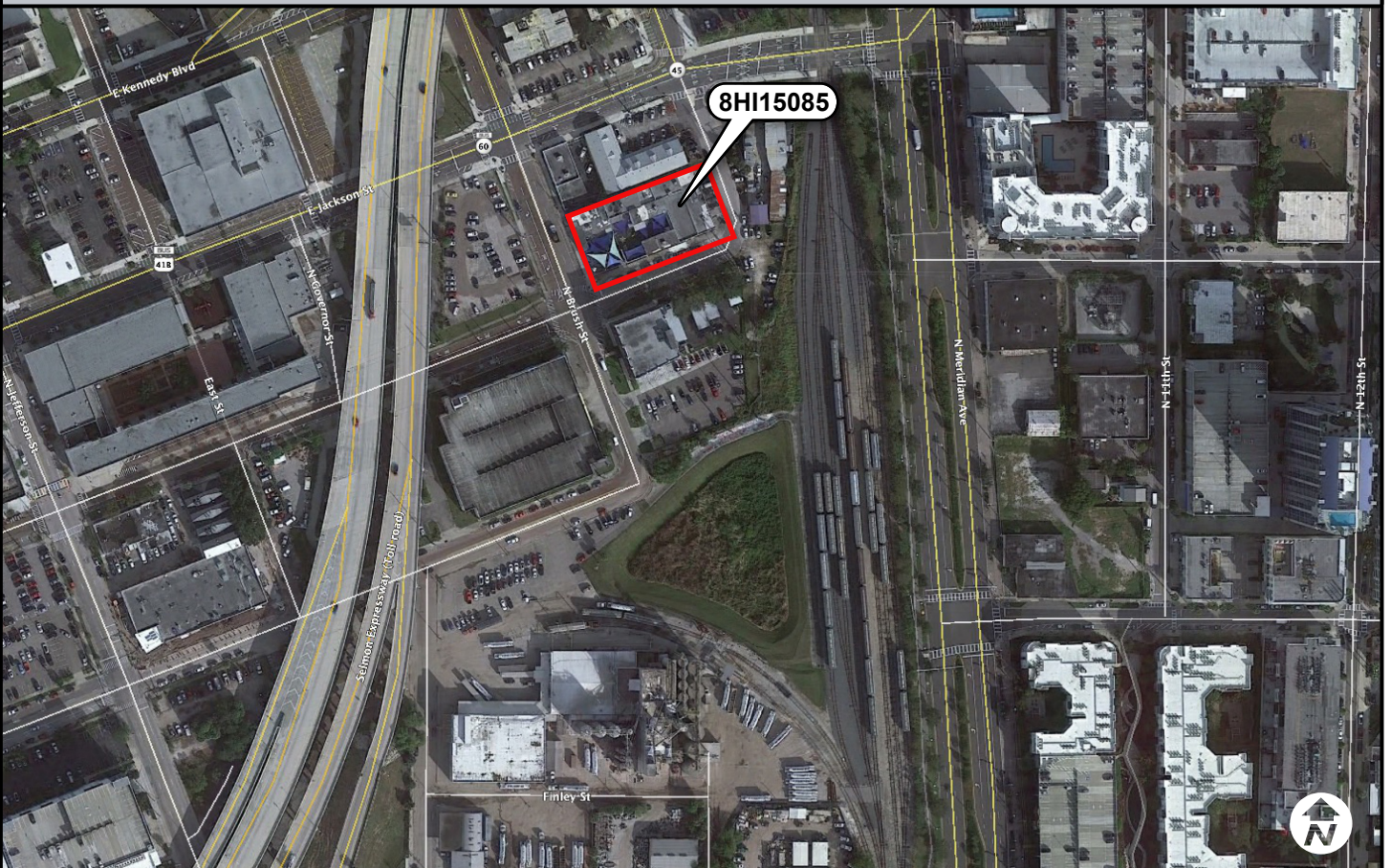
RECORDER INFORMATION

Recorder Name Janus Research Affiliation Janus Research
 Recorder Contact Information 1107 N Ward St Tampa, FL / 813-636-8200 / janus@janus-research.com
 (address / phone / fax / e-mail)

Required Attachments

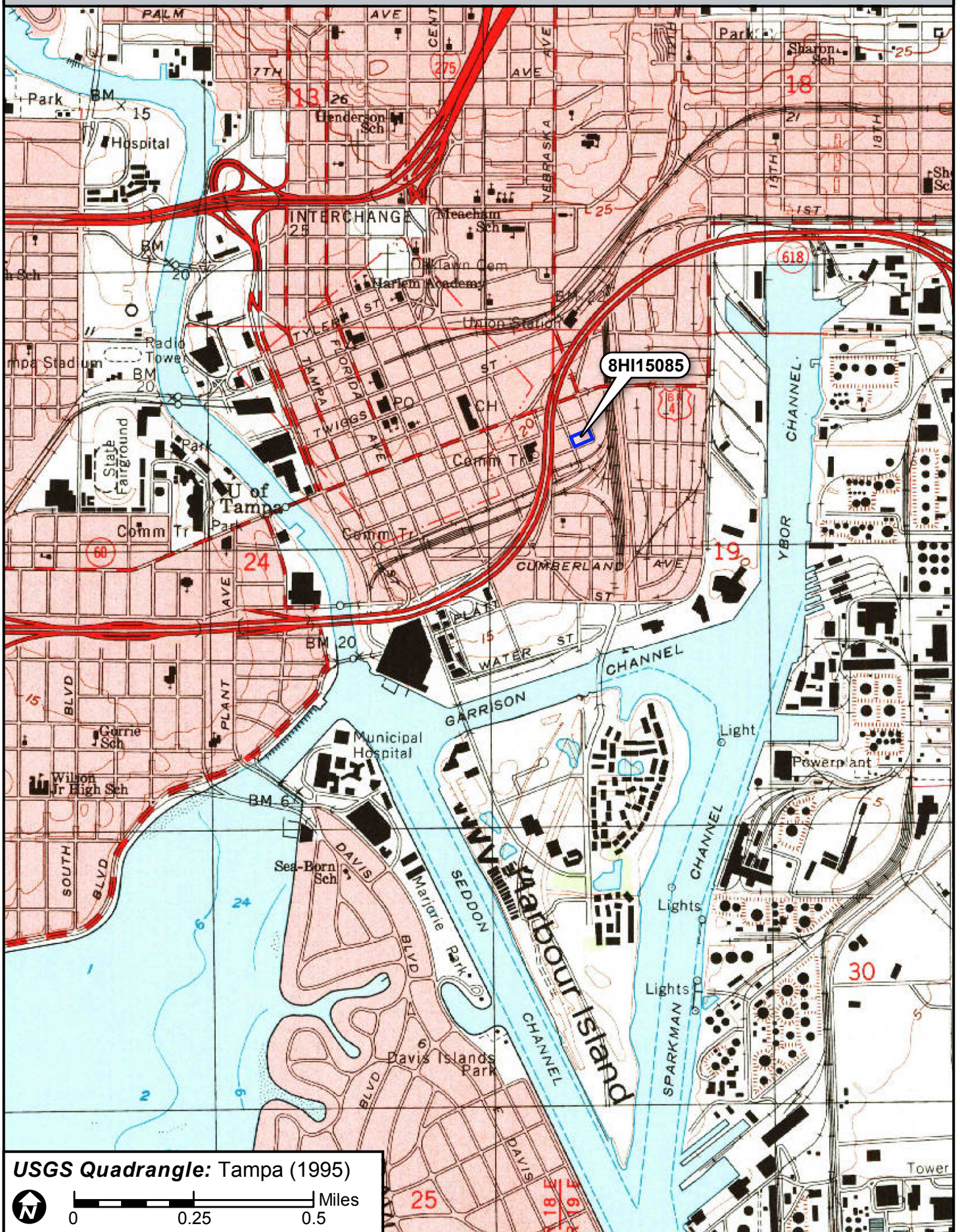
- ❶ USGS 7.5' MAP WITH STRUCTURE LOCATION CLEARLY INDICATED
- ❷ LARGE SCALE STREET, PLAT OR PARCEL MAP (available from most property appraiser web sites)
- ❸ PHOTO OF MAIN FACADE, DIGITAL IMAGE FILE

When submitting an image, it must be included in digital **AND** hard copy format (plain paper grayscale acceptable). Digital image must be at least 1600 x 1200 pixels, 24-bit color, jpeg or tiff.









8HI15085

USGS Quadrangle: Tampa (1995)



0 0.25 0.5 Miles

Appendix C

Survey Log

Ent D (FMSF only) _____



Survey Log Sheet

Florida Master Site File
Version 5.0 3/19

Survey # (FMSF only) _____

Consult *Guide to the Survey Log Sheet* for detailed instructions.

Manuscript Information

Survey Project (name and project phase)

CRAS Pond Addendum of the THEA Whiting Street PD&E Study

Report Title (exactly as on title page)

SELMON EXPRESSWAY, WHITING STREET PROJECT PD&E STUDY, CULTURAL RESOURCE ASSESSMENT SURVEY POND ADDENDUM

Report Authors (as on title page)

1. Janus Research 3. _____
2. _____ 4. _____

Publication Year 2022

Number of Pages in Report (do not include site forms) 33

Publication Information (Give series, number in series, publisher and city. For article or chapter, cite page numbers. Use the style of *American Antiquity*.)

Janus Research, 1107 N. Ward Street, Tampa FL 33607

Supervisors of Fieldwork (even if same as author) Names Kate Hoffman, Amy Streelman

Affiliation of Fieldworkers: Organization Janus Research City Tampa

Key Words/Phrases (Don't use county name, or common words like *archaeology, structure, survey, architecture, etc.*)

1. THEA 3. Fort Brooke 5. Rail 7. _____
2. Whiting 4. Widening 6. _____ 8. _____

Survey Sponsors (corporation, government unit, organization, or person funding fieldwork)

Name Tampa Hillsborough Expressway Authority Organization _____

Address/Phone/E-mail 1104 East Twiggs Street, Tampa, Florida 33602

Recorder of Log Sheet Janus Research Date Log Sheet Completed 1-12-2022

Is this survey or project a continuation of a previous project? No Yes: Previous survey #s (FMSF only)

Project Area Mapping

Counties (select every county in which field survey was done; attach additional sheet if necessary)

1. Hillsborough 3. _____ 5. _____
2. _____ 4. _____ 6. _____

USGS 1:24,000 Map Names/Year of Latest Revision (attach additional sheet if necessary)

1. Name TAMPA Year 1969 4. Name _____ Year _____
2. Name _____ Year _____ 5. Name _____ Year _____
3. Name _____ Year _____ 6. Name _____ Year _____

Field Dates and Project Area Description

Fieldwork Dates: Start 1-7-2022 End 1-7-2022 Total Area Surveyed (fill in one) _____ hectares 11.50 acres

Number of Distinct Tracts or Areas Surveyed 3

If Corridor (fill in one for each) Width: _____ meters _____ feet Length: _____ kilometers _____ miles

Research and Field Methods

Types of Survey (select all that apply): [X]archaeological [X]architectural []historical/archival []underwater []damage assessment []monitoring report []other(describe): _____

Scope/Intensity/Procedures

Visual inspection of historic resources APE. Desktop analysis & pedestrian survey of archaeological APE. Subsurface testing limited by existing rail corridor, ditching, and modified embankment.

Preliminary Methods (select as many as apply to the project as a whole)

[]Florida Archives (Gray Building) []library research- local public [X]local property or tax records [X]other historic maps []LIDAR []Florida Photo Archives (Gray Building) []library-special collection [X]newspaper files [X]soils maps or data []other remote sensing [X]Site File property search []Public Lands Survey (maps at DEP) [X]literature search []windshield survey [X]Site File survey search [X]local informant(s) [X]Sanborn Insurance maps [X]aerial photography [X]other (describe): Janus Library

Archaeological Methods (select as many as apply to the project as a whole)

[]Check here if NO archaeological methods were used. []surface collection, controlled []shovel test-other screen size []block excavation (at least 2x2 m) []metal detector []surface collection, uncontrolled []water screen []soil resistivity []other remote sensing []shovel test-1/4" screen []posthole tests []magnetometer [X]pedestrian survey []shovel test-1/8" screen []auger tests []side scan sonar []unknown []shovel test 1/16" screen []coring []ground penetrating radar (GPR) []shovel test-unscreened []test excavation (at least 1x2 m) []LIDAR [X]other (describe): Desktop analysis

Historical/Architectural Methods (select as many as apply to the project as a whole)

[]Check here if NO historical/architectural methods were used. []building permits []demolition permits []neighbor interview []subdivision maps []commercial permits []windshield survey []occupant interview []tax records []interior documentation [X]local property records []occupation permits []unknown [X]other (describe): Visual inspection of APE

Survey Results

Resource Significance Evaluated? [X]Yes []No

Count of Previously Recorded Resources 3 Count of Newly Recorded Resources 1

List Previously Recorded Site ID#s with Site File Forms Completed (attach additional pages if necessary) HI685, HI11987, HI15084

List Newly Recorded Site ID#s (attach additional pages if necessary) HI15085


Site Forms Used: []Site File Paper Forms [X]Site File PDF Forms

REQUIRED: Attach Map of Survey or Project Area Boundary

SHPO USE ONLY SHPO USE ONLY SHPO USE ONLY Origin of Report: []872 []Public Lands []UW []1A32 # []Academic []Contract []Avocational []Grant Project # []Compliance Review: CRAT # Type of Document: []Archaeological Survey []Historical/Architectural Survey []Marine Survey []Cell Tower CRAS []Monitoring Report []Overview []Excavation Report []Multi-Site Excavation Report []Structure Detailed Report []Library, Hist. or Archival Doc []Desktop Analysis []MPS []MRA []TG []Other: Document Destination: Plottable Projects Plotability:



Survey Log Graphic

 Survey Area



The Survey Area is In Section 19 of Township 29 South, Range 19 East, on the Tampa (1956 PR 1969) USGS Quadrangle Map