



Said to be one of the eeriest sights encountered in galaxy observing.



# NGC 4435 & 4438

## "The Eyes" – Two Spiral Lenticular Galaxies

### Navigate to NGC 4435 & 4438

1. Find Beta Leonis (Denebola) and Epsilon Virginis (Vindemiatrix).
2. Draw a line from Beta to Epsilon.
3. M84 and M86 lie at the mid point of that line.
4. NGC 4435 & 4438 glow about 40 minutes east of M86.
5. In a 40 minute field, they appear as two eyes staring back in the blackness of space.

### Bonus Galaxies:

The region abounds in galaxies: M84, M86, M87, and many fainter ones.

### Recommended Aperture:

Not less than 10 inches. The larger, the better.

Yes, they do resemble two eyes staring at you from the blackness of space!

### Published Characteristics for NGC 4435

Integrated magnitude: 11.7

Size: 2.8 min x 2.0 min

Surface brightness: 13.7 mag./min<sup>2</sup>, 22.6 mag./sec<sup>2</sup>

Position Angle: 10°

Distance: 52 million light-years

### Published Characteristics for NGC 4438

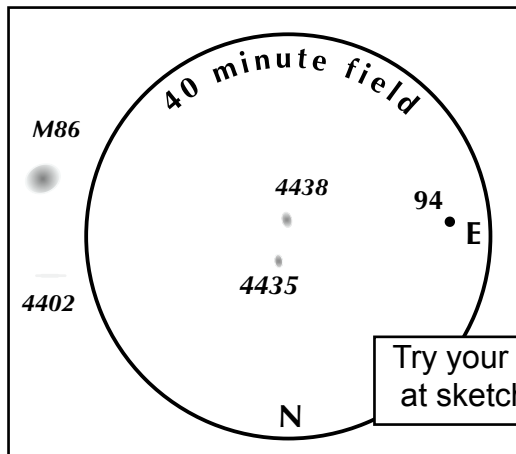
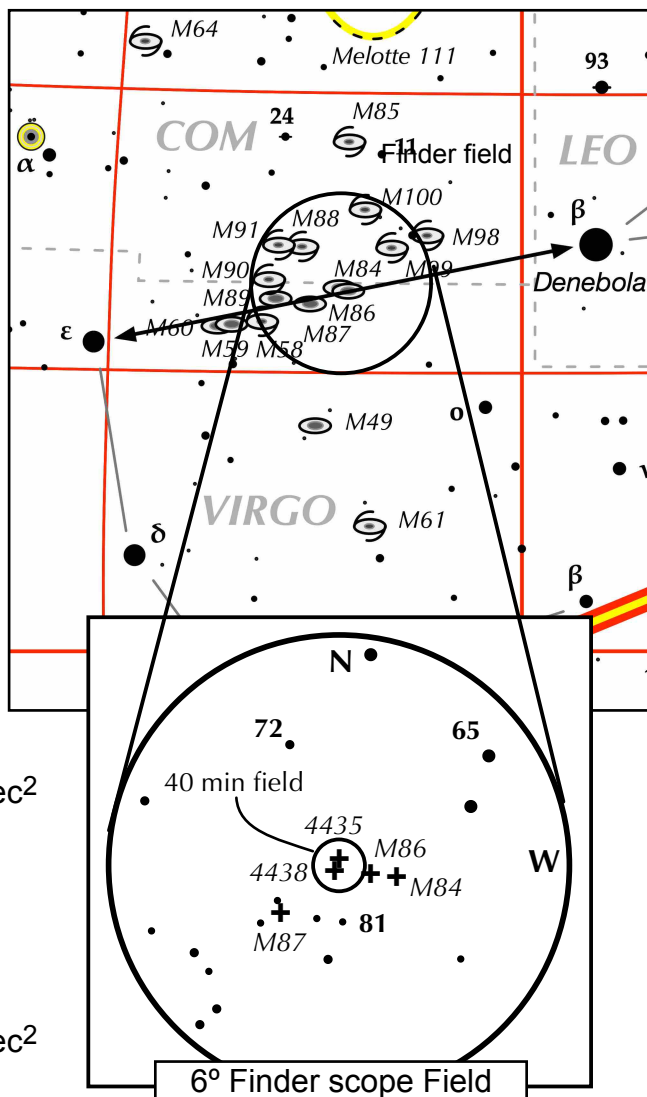
Integrated magnitude: 10.6

Size: 8.6 min x 3.2 min (bright core, faint tails)

Surface brightness: 15.0 mag./min<sup>2</sup>, 24.0 mag./sec<sup>2</sup>

Position Angle: 20°

Distance: 52 million light-years



Try your hand at sketching!

**Eyepiece Impressions:**

**NGC 4435:** Very small, elusive. Uniform brightness. Use averted vision. Near NGC 4438 and located 25' east of M86. (6-inch Cass.; ACAC)  
10 inch f/10 SCT, 125x: "NGC 4435 is slightly elongated with a bright center." JG

**NGC 4438:** Extremely elongated, uniform brightness, very large. Use averted vision. Located 4' south of NGC 4435. (6-inch Cass.; ACAC)  
10 inch f/10 SCT, 125x: "NGC 4438 is elongated with a bright center. Under careful observation, wispy outer regions are noticed." JG