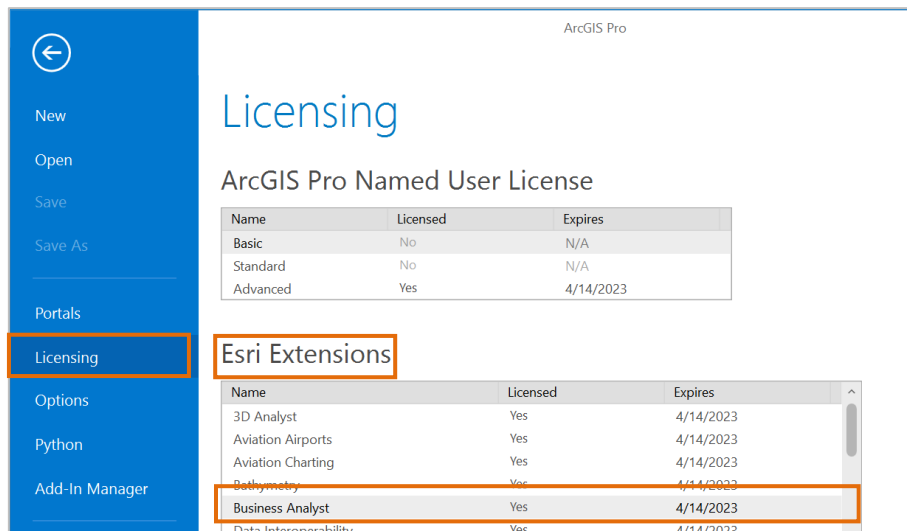


# GETTING AND INSTALLING ESRI BUSINESS ANALYST DATA

Prerequisites 1: Business Analyst extension needs to be licensed.

- Start ArcGIS Pro
- At the starting window, go to [Licensing](#) tab on the left
- Confirm that [Business Analyst](#) is licensed under [Esri Extensions](#)



Clemson students, staff, and faculty can download [Esri Business Analyst Data](#) and use it instead of data stored in ArcGIS Online. This way, you can save your credits when using Business Analyst tools. See below for instructions.

Prerequisites 2: Approximately 159 GB of free space is available

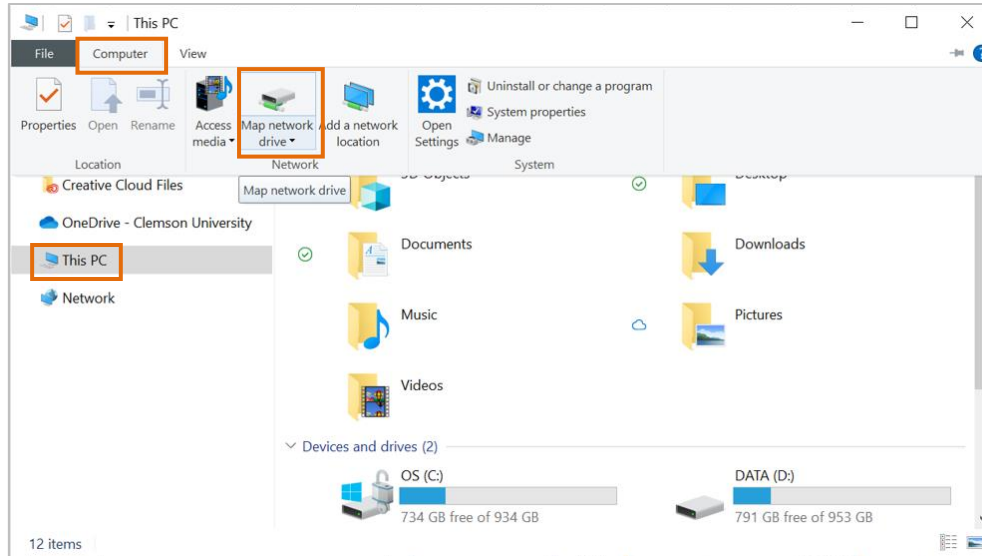
Each 7-Zip file size is approximately 10.5 GB. Ensure 66 GB of free space is available on the drive where these files will be downloaded. Another 93 GB on the drive will be needed to where the data will be extracted. Once extracted, you will begin the installation process. If installing to the same drive, you are going to need another 93 GB of free space on that drive. After you finish installation of the data, you can delete approximately 159 GB of setup and 7-Zip files. For more information, please visit Esri's website [here](#).

Prerequisites 3: 7-Zip open source program

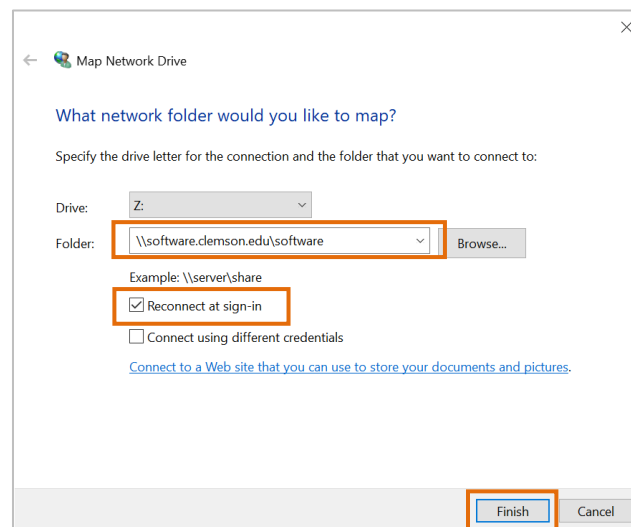
The 7-Zip open source program is required to extract and automatically reassemble the Business Analyst data file archives. You will need to install 7-Zip to extract the necessary files from the downloads. Current 7-Zip users will want to install the latest version - ensuring a more efficient extraction process. You may download 7-Zip from the official site: <http://www.7-zip.org/>.

## 1. Connect to the Software Drive

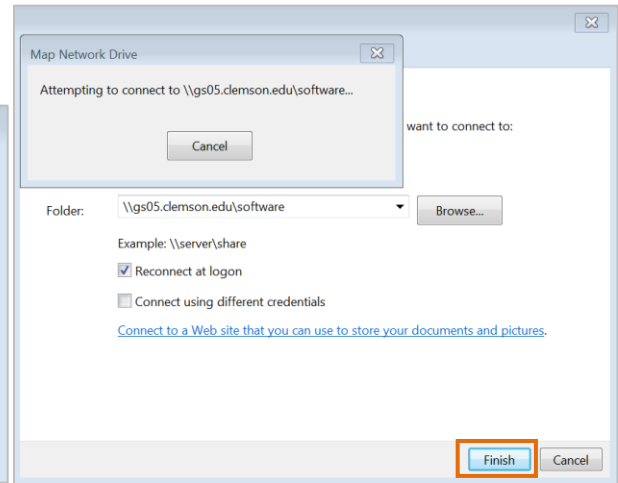
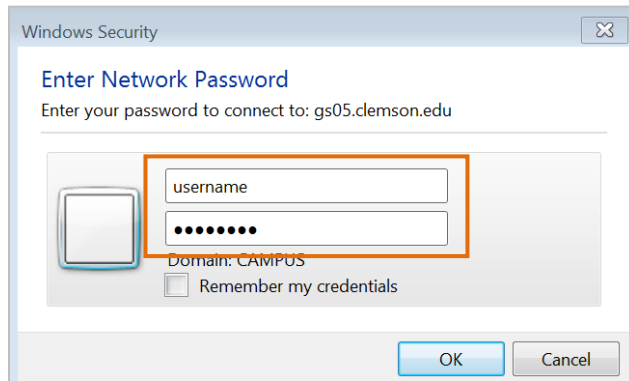
- 1.1. To get the installation software for Business Analyst Data Update, you need to be connected to the [campus network](#).
- 1.2. Once you are connected to [eduroam](#) WiFi, open your file explorer and click on [This PC](#) in the menu on the left.
- 1.3. After clicking on [Computer](#) tab, click [Map network drive](#).



- 1.4. Type `\\software.clemson.edu\\software` at [Folder](#). The letter chosen in the Drive dropdown menu is arbitrary. Check [Reconnect as sign-in](#). Click [Finish](#).



- 1.5. You will be prompted to enter a password. In the Enter Network Password dialogue box, enter your Clemson User ID and password. Click [OK](#). If necessary, click [Finish](#) again.

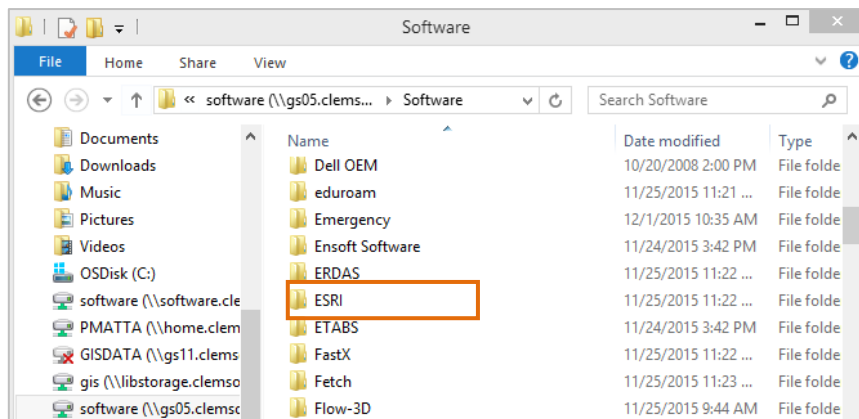


1.6. After connecting to the network drive, it should display in [This PC](#). It will be labeled [software\(\\software.clemson.edu\)](#).

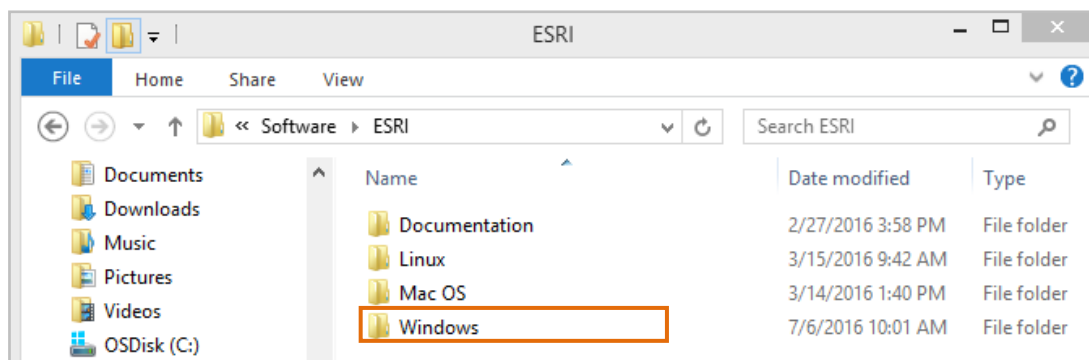
## 2. Obtain the Software installer

2.1. Open the [Software](#) drive.

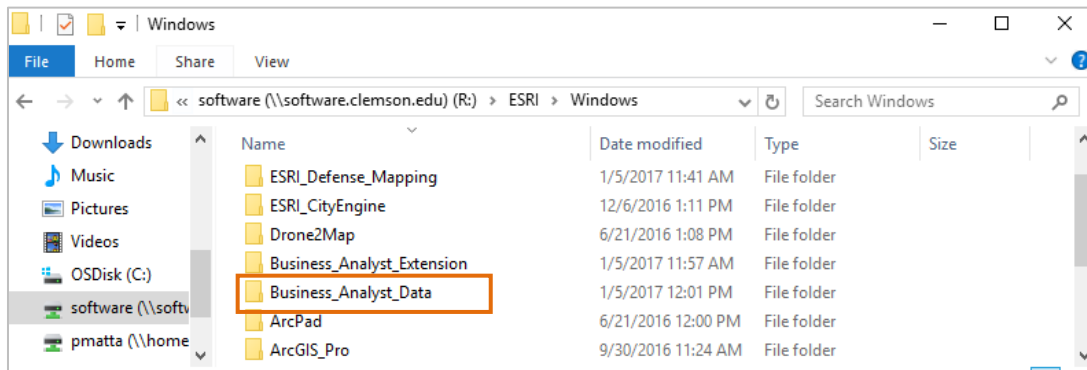
2.2. In the Software folder, scroll until you see a folder labeled [ESRI](#). Open the folder.



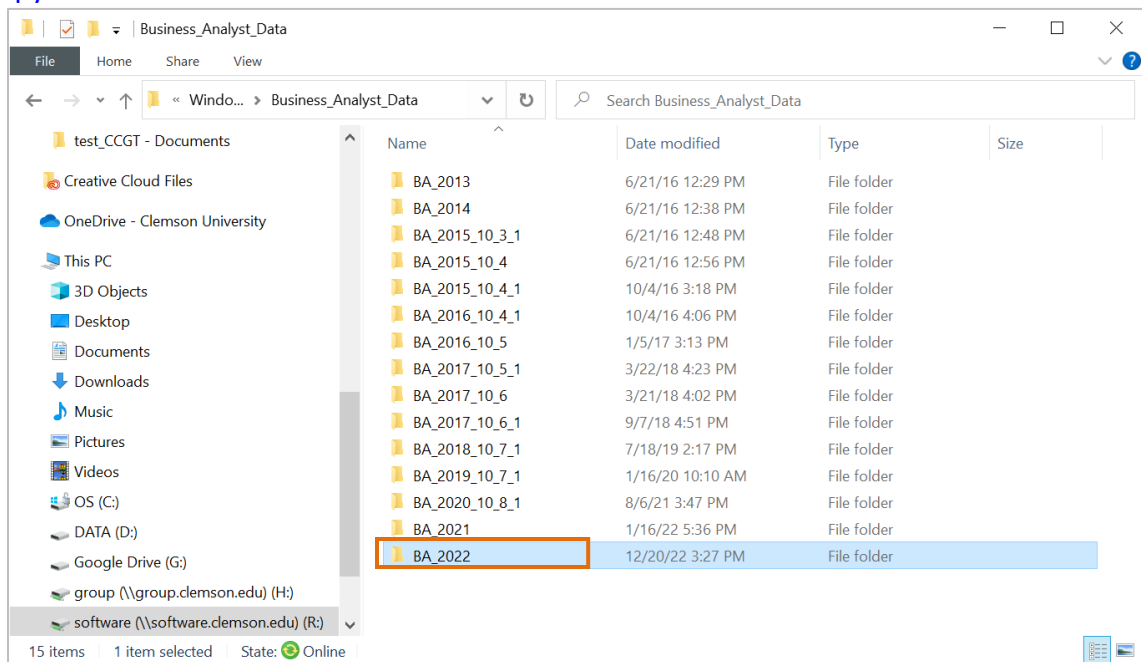
2.3. Open the [Windows](#) folder.



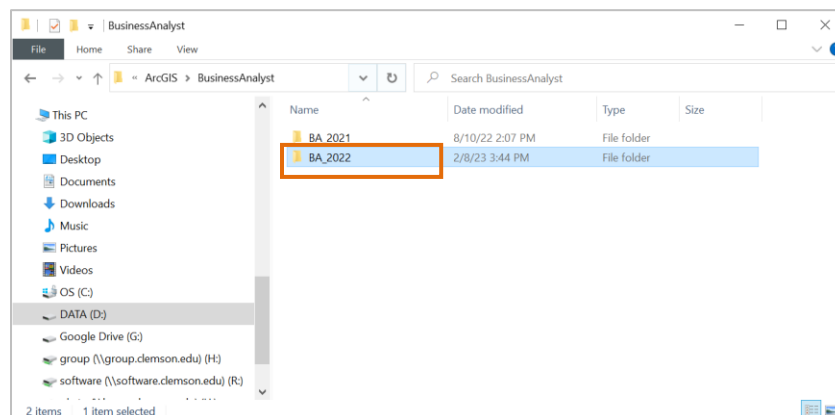
2.4. Open [Business\\_Analyst\\_Data](#).



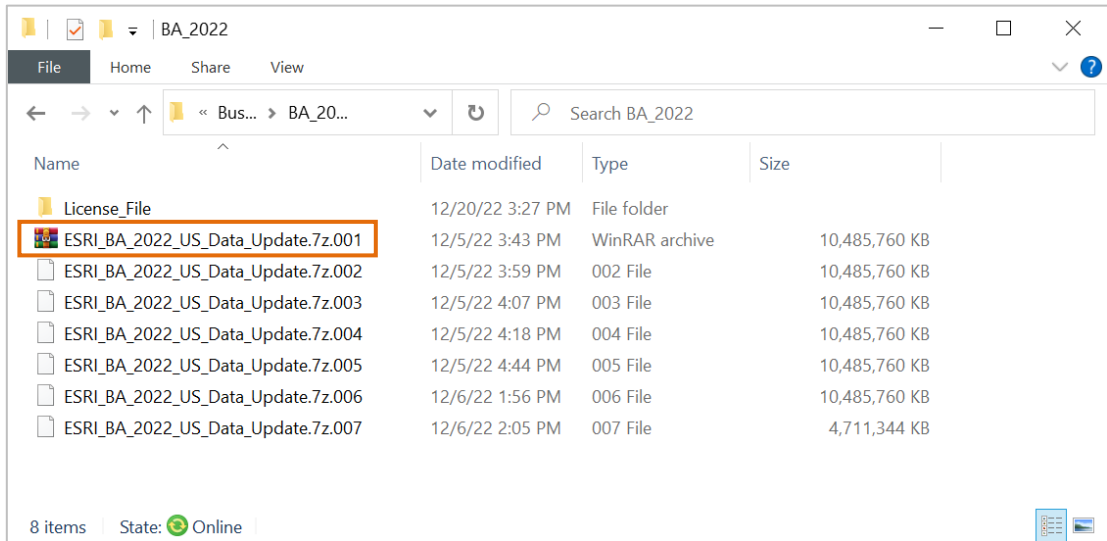
2.5. Find the latest dataset (As of February 2023, the latest is **BA\_2022**) and right click on that folder and **copy** it.



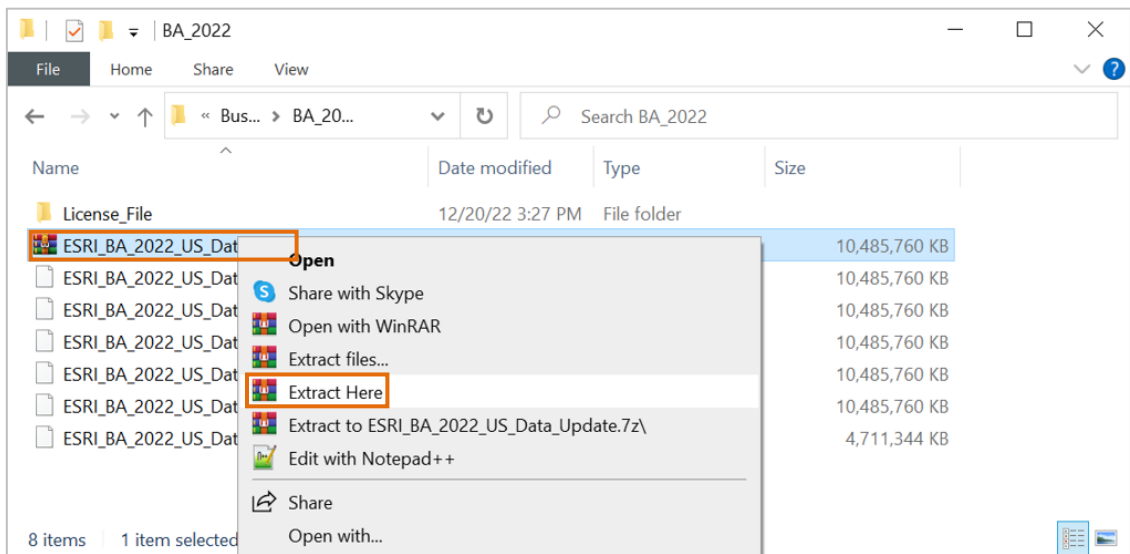
2.6. Open a local folder of your computer where you would like to save the Business Analyst data. Right click on the white space and click **Paste**. The example below saves **BA\_2022** at a folder in D drive.



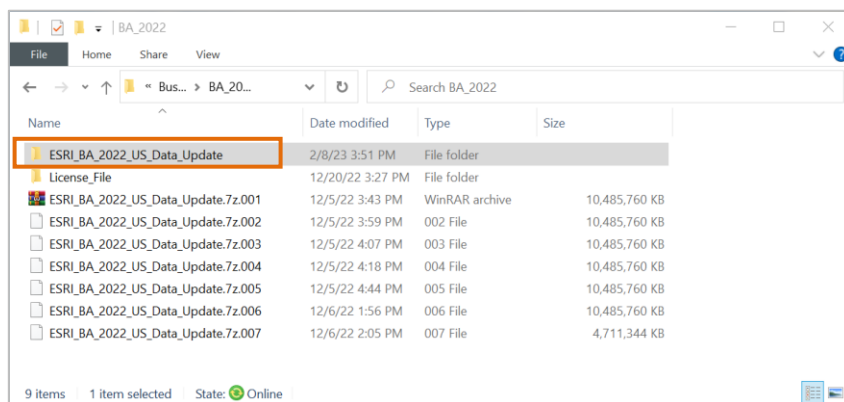
2.7. Open the folder by double clicking on it and you will find **ESRI\_BA\_2022\_US\_Data\_Update.7z.001**.



2.8. Right click [ESRI\\_BA\\_2022\\_US\\_Data\\_Update.7z.001](#) and select [Extract Here](#) to extract data.

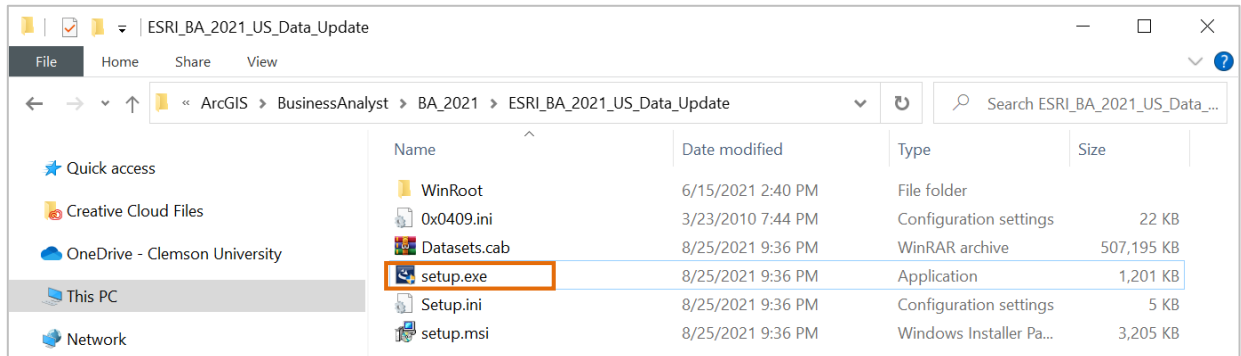


2.9. After extraction completed, you will see [ESRI\\_BA\\_2022\\_US\\_Data\\_Update](#) folder.

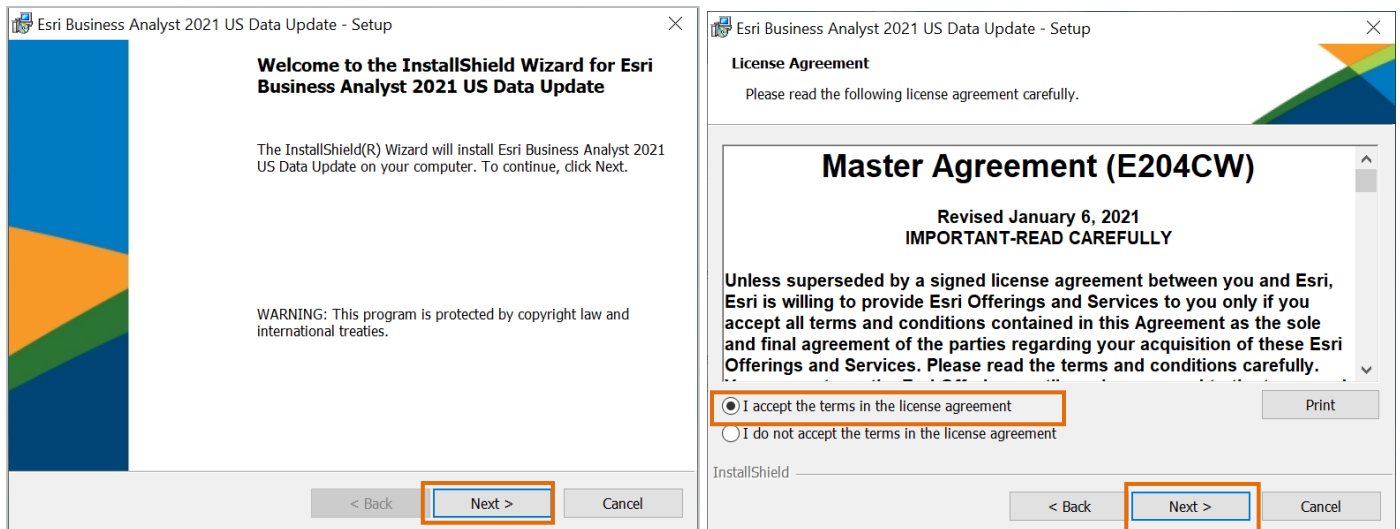


### 3. Install Business Analyst US Data Update

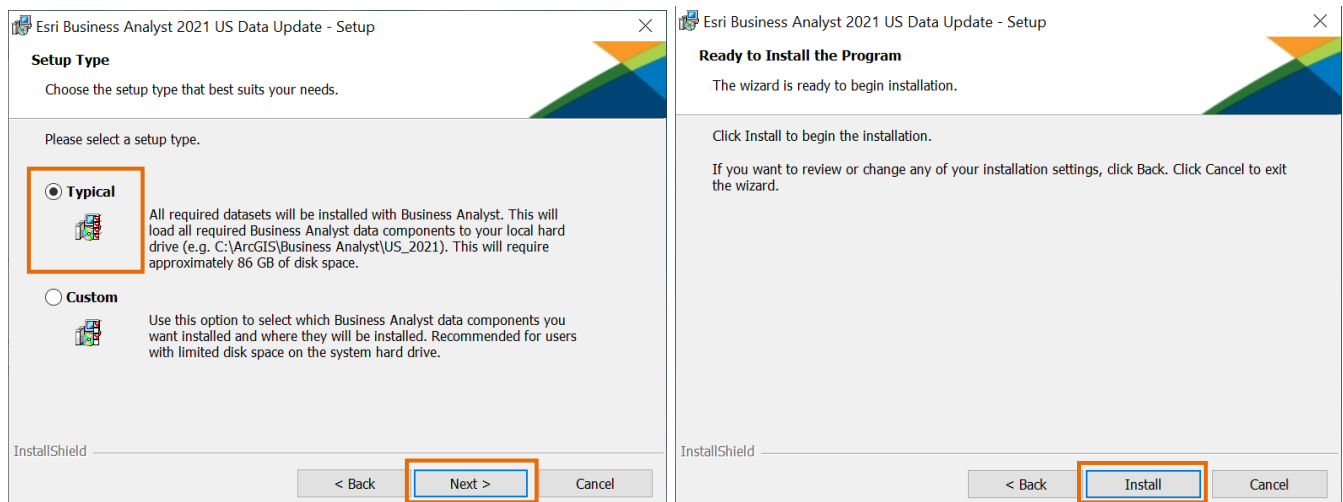
3.1. Open [ESRI\\_BA\\_2022\\_US\\_Data\\_Update](#) folder and you will find an installer, [setup.exe](#). Double click on it to start installation.



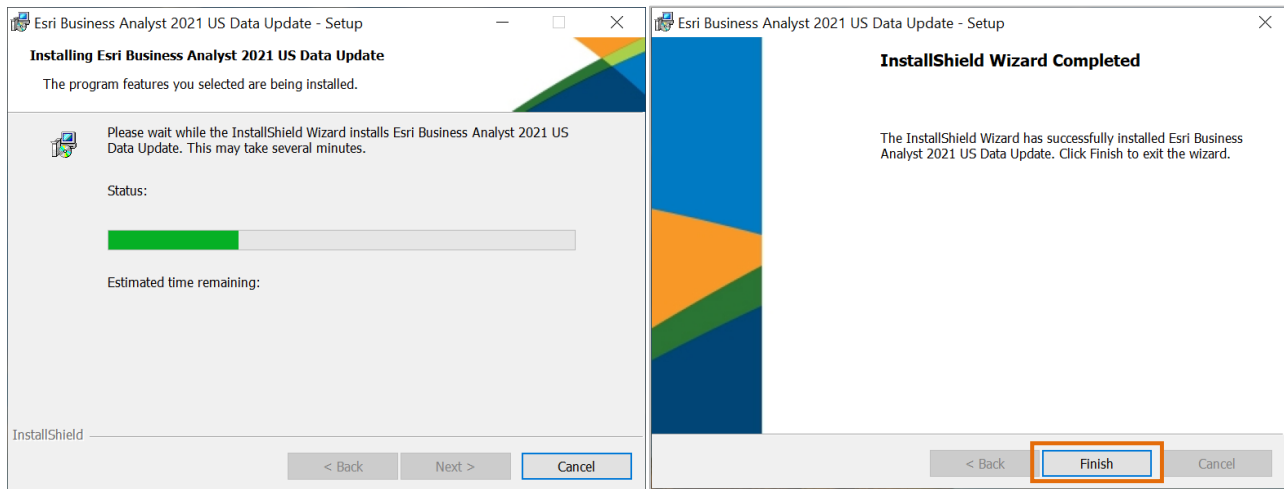
3.2. Click [Next](#). Select [I accept the terms in the license agreement](#) and click [Next](#) (Screen shots below are those of 2021).



3.3. Select [Typical](#) and click [Next](#). Click [Install](#).

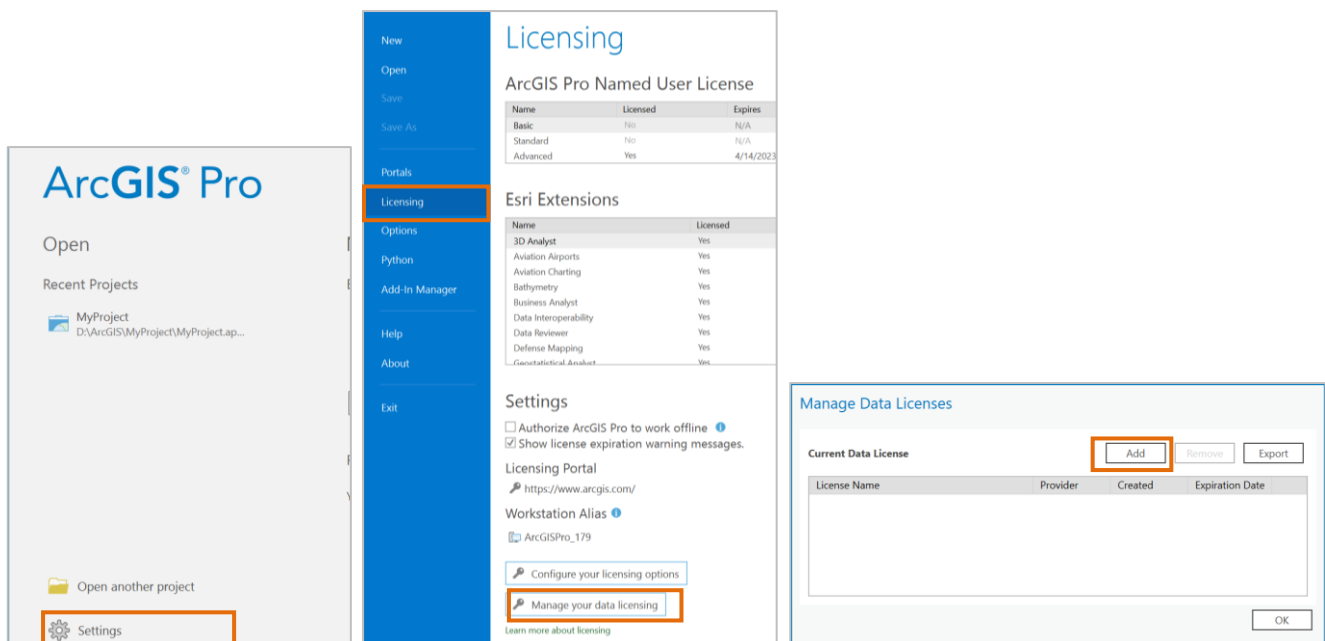


3.4. After installation process is completed, click **Finish** to close the wizard.

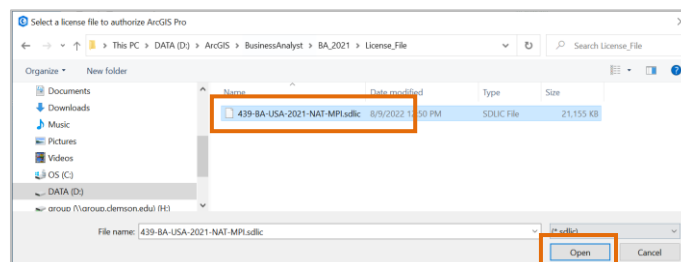


## 4. Activate License

4.1. Start **ArcGIS Pro** and Click **Settings**. Navigate to **Licensing** tab and click **Manage your data licensing**. At **Manage Data Licenses** window, click **Add**.

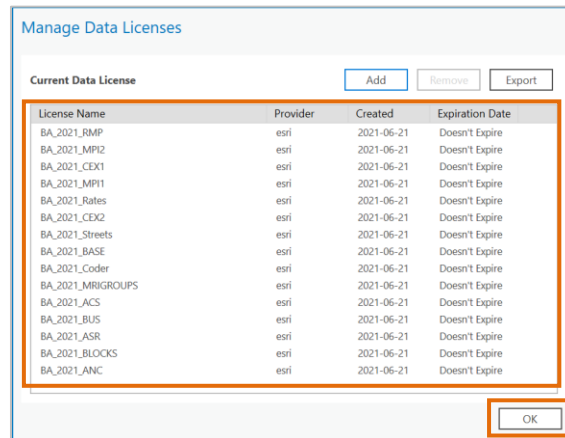


4.2. License file (extension of **.sdlic**) can be found **License\_File** folder in **BA\_2022** folder. Locate it and click **Open**.

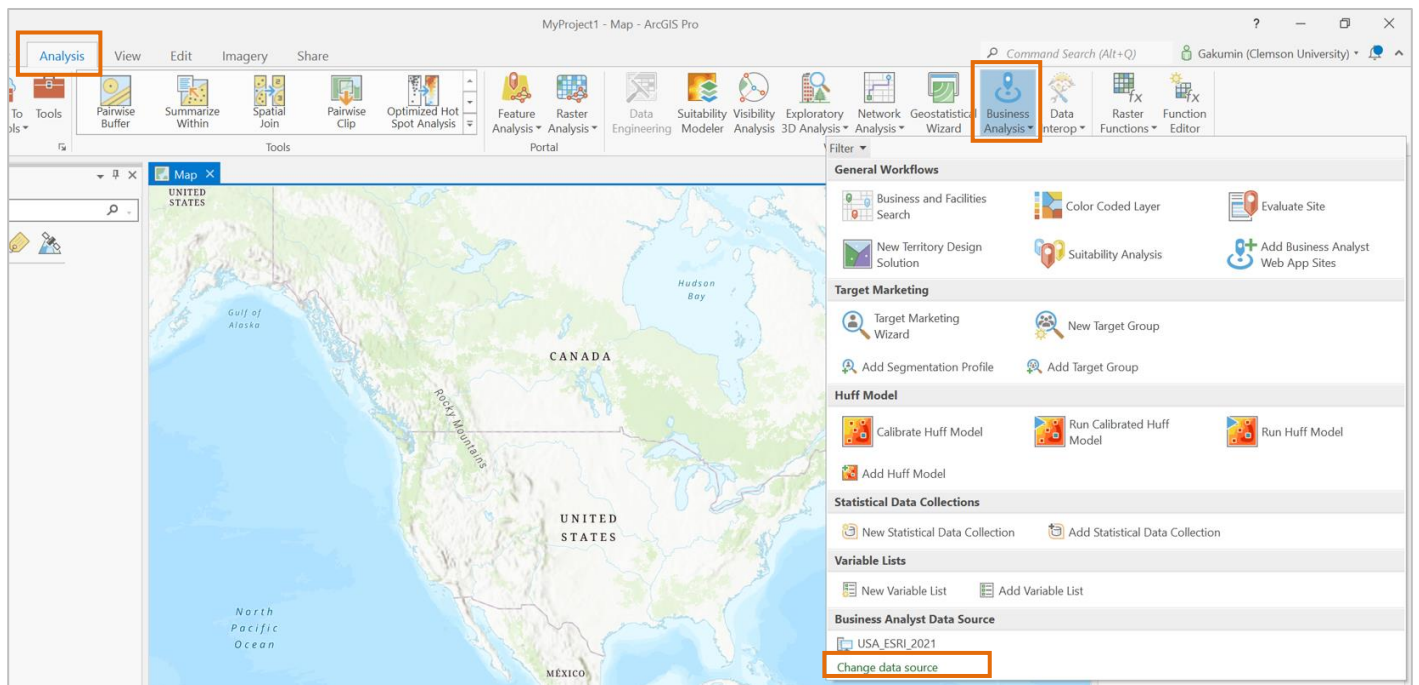




4.3. Confirm that Business Analyst data licenses are added as follows. Click **OK**.

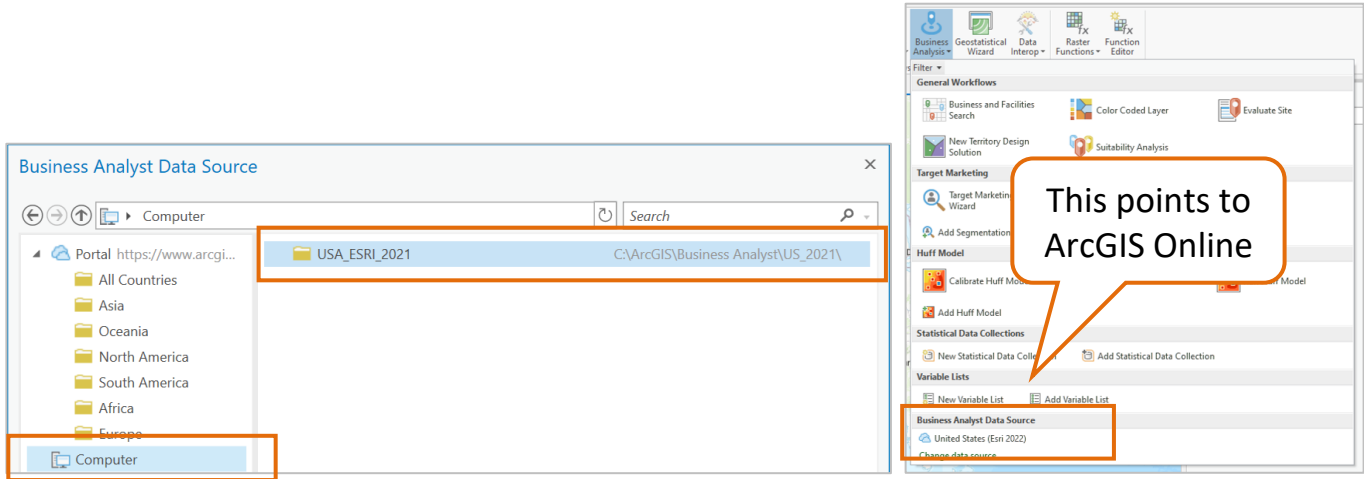


4.4. Confirm that Business Analyst now uses the installed local data. Open a project in **ArcGIS Pro**, navigate to **Analysis** tab and select **Business Analysis**. Click **Open data source**.





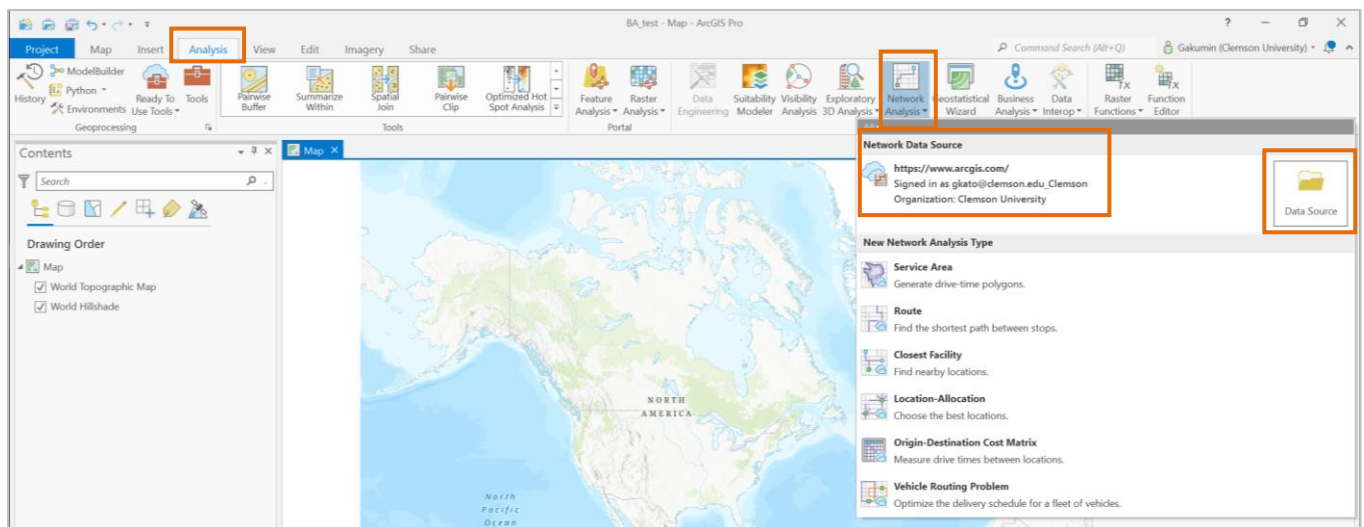
4.5. Your Business Analysis tools should point to local data as follows (left). Confirm that data source is NOT pointing to data stored in ArcGIS Online (right).



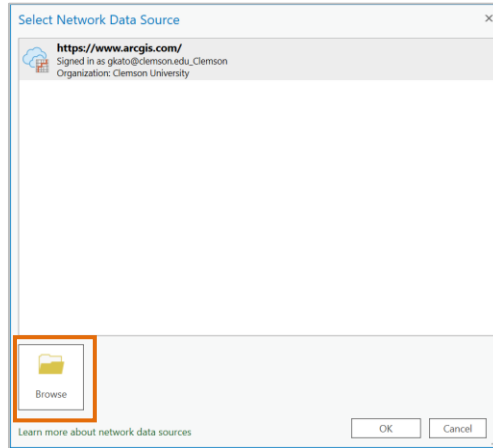
## 5. Use Business Analysis data for other analysis (Optional)

**Network Analysis** and **Geocoding** can make use of the downloaded Business Analysis data to save credit usages. As default, both geoprocessing tools use data stored in ArcGIS Online. You can now change its Data Sources to use local data to save credit usages.

5.1. Start a project in ArcGIS Pro. Navigate to **Analysis** tab and click **Network Analysis**. Here you can confirm that currently Network Analysis refers to data in ArcGIS Online. Click **Data Source** to change it to local data.

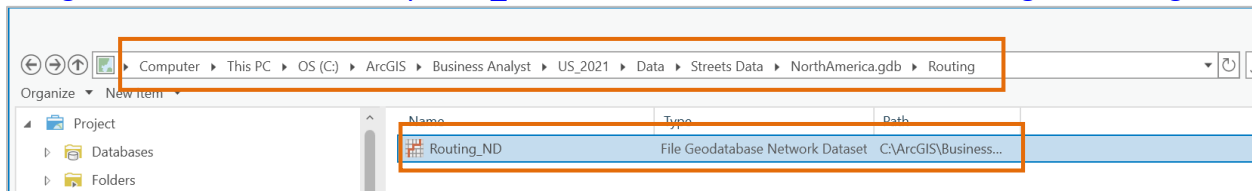


5.2. Click **Browse**.



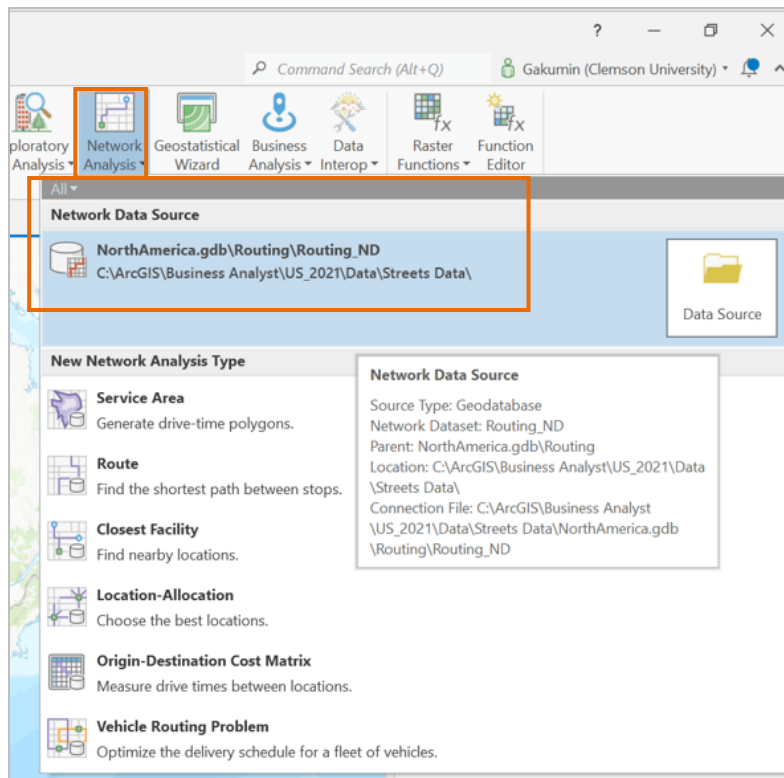
5.3. You need to select **Routing** data installed in C drive at Section 3. Navigate to the location where you installed data. (Note: The example blow is 2021 data)

- E.g. `C:\ArcGIS\Business Analyst\US_2021\Data\Streets Data\NorthAmerica.gdb\Routing`

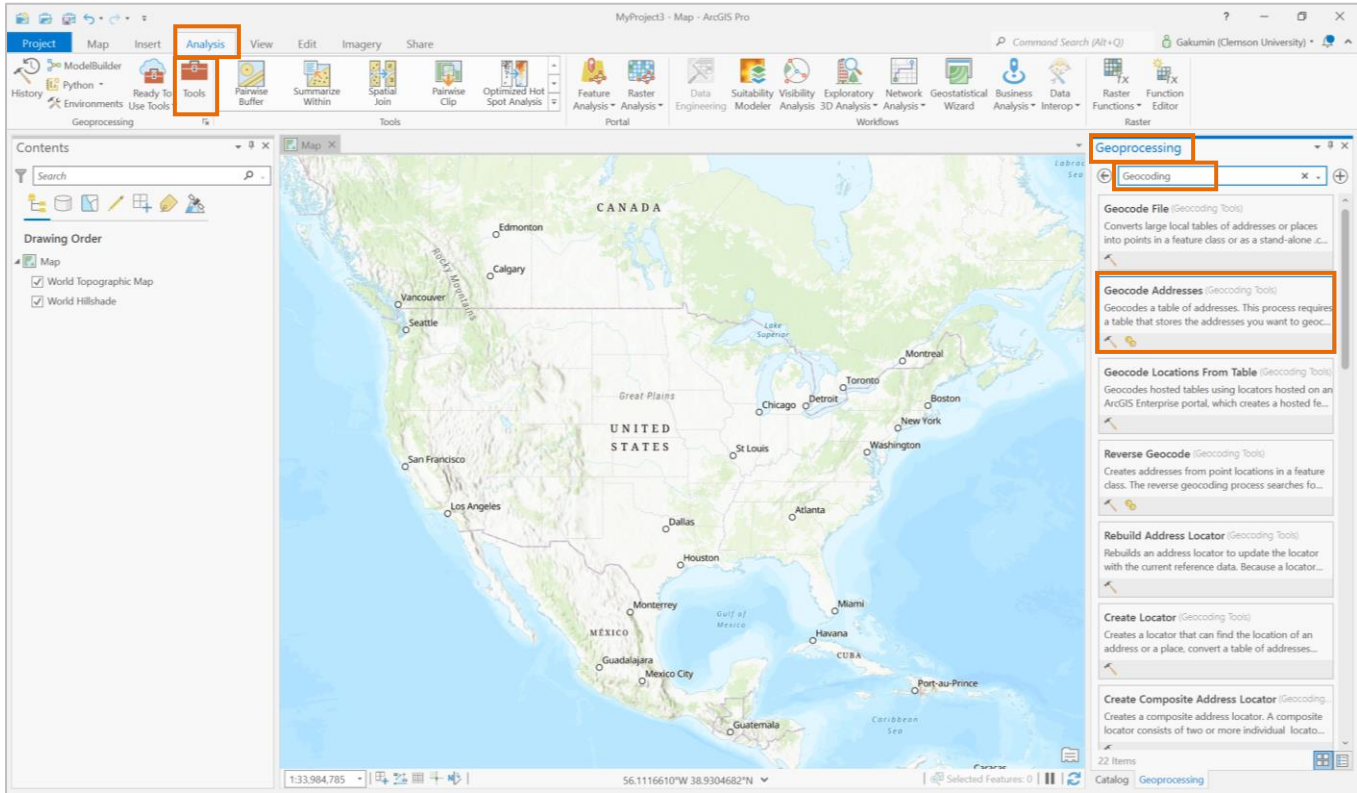


Once select the data above, click **OK** to apply the change.

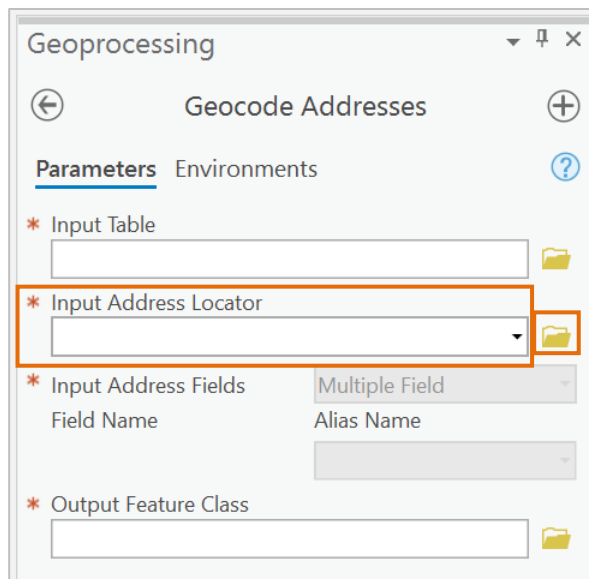
5.4. Again, Navigate to **Network Analysis** to confirm that the change is applied.



5.5. Next, change data source of Geocoding. Open **Analysis** tab in ArcGIS Pro and click **Tools**. On **Geoprocessing** side window, type “**Geocoding**”. You will see **Geocode Addresses** and click on it.

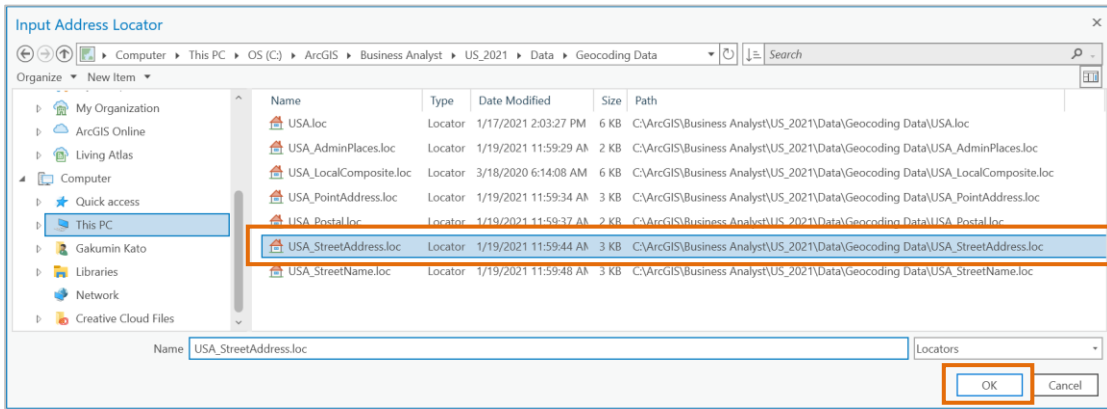


5.6. Specify your local address locator at **Input Address Locator**. Click **Browse**, and open **Input Address Locator** window.



5.7. Find **USA\_StreetAddress.loc** at the following directory. Select it and click **OK**.

- E.g. C:\ArcGIS\Business Analyst\US\_2021\Data\Geocoding Data\USA\_StreetAddress.loc



5.8. Now you can confirm that [USA\\_StreetAddress.loc](#) is selected as Input Address Locator.

