



The EVGA X99 Classified was engineered from the ground up to be the best overclocking motherboard on the planet. It all starts with power. Dual 8pin CPU power inputs provide up to 600W of dedicated power for the CPU, along with a highly efficient 10-phase Digital VRM providing the cleanest power to the CPU possible, fed through a CPU socket that has 150% increase in the amount of gold content. A total of 8 DIMM slots support up to 128GB of DDR4 memory, and a 4 layer memory T-routing design allows for extreme memory speeds such as 3000MHz+ (OC)\*\*. The PCI-E layout is optimized for improved lane distribution and better performance, and with native support for NVIDIA 4-Way SLI®, this is the ultimate platform for the enthusiast.

A great amount of detail was also paid attention to the onboard devices, including a total of 10 native SATA 6.0Gb/s ports, Dual Intel Gigabit Networks, native USB 3.0 support, M.2 support, and Creative Core3D Audio with dedicated shielding and a separate audio ground.

Of course, no great motherboard can truly flex its muscles without a great BIOS. The EVGA X99 Classified uses EVGA's new GUI BIOS that focuses on the best overclocking support and functionality. Straight and to the point, the way a modern BIOS should be.

## KEY SPECS

- Supports Intel® Core™ i7 Processor family for LGA-2011-3 socket
- Intel® X99 Chipset
- Enthusiast Layout Supporting 2-Way SLI®, 3-Way SLI®, 4-Way SLI® & CrossfireX™
- 8 DIMM Quad-Channel DDR4 3200MHz+\*\* (Up To 128GB)
- PCI Express® 3.0 Ready
- 5 PCI Express® Graphics Expansion Slots
- 1 PCI Express® x4 slot
- 8 USB 2.0 Ports (six rear panel, two onboard)
- 6 USB 3.0 Ports (four rear panel, two onboard)
- 6 SATA III/6G RAID Ports
- 4 SATA III/6G AHCI Ports
- 2 Intel Gigabit Ethernet Ports (10/100/1000)
- 6 Channel High Definition Audio + Optical
- M.2 Slot E/Slot M
- E-ATX Form Factor

## DESIGN DETAILS

**Supported CPUs** - Intel® Core™ i7 Socket 2011-3  
**Socket Type** - LGA2011-3

**PCH** - Intel® X99

**DIMM QTY** - 8 DIMM Slots  
**Memory Type** - DDR4 Up to 3200MHz+\*\*  
**Memory Capacity** - 128GB

**SATA III 6.0Gb/s Ports/Controller** - 4 / X99 PCH AHCI  
**SATA III 6.0Gb/s Ports/Controller** - 6 / X99 PCH RAID  
**RAID Support** - RAID 0, 1, 5, 10, JBOD

**USB 2.0 Ports/Controller** - 8 / Intel® X99 PCH  
**USB 3.0 Ports/Controller** - 6 / Intel® X99 PCH

\*PCI-E lane distribution listed REQUIRES a 40 lane CPU.

**Network Speed** - 10/100/1000  
**Network Ports/Controller** - 2 / Intel® i217/i210

**Audio** - 6 Channel HD Audio  
**Audio Controller** - Creative Core 3D (CA0132)

**PCI-E Slot Arrangement** - 1x16, 2x16, 3x8 or 4x8\*  
**PCI-E x16 Mechanical Slots** - 5  
**PCI-E x4 Slots** - 1

**BIOS Type** - AMI / UEFI  
**Software** - EVGA E-LEET Tuning Utility

**Fan Headers** - 6

\*\* 2800MHz and 3000MHz modules are officially supported in latest BIOS update.

### DIMENSIONS

- Width: 10.375in – 264mm
- Length: 12in – 305mm
- Form Factor: E-ATX

### ACCESSORIES

- EVGA Driver Installation Disc with EVGA E-LEET
- Rear Case I/O Panel
- Rear Case I/O Cover
- 1 Probelts Cable
- 4 GPU Link Cable
- 6 SATA 6G Data Cables
- 2-way SLI Bridge
- 3-way SLI Bridge
- 4-way SLI Bridge
- Manual



### PRODUCT WARRANTY

This product is covered under EVGA's 3 year warranty which covers parts and labor. Further warranty extension is available upon registration within 30 days of purchase. For more details please visit [www.evga.com/warranty](http://www.evga.com/warranty)





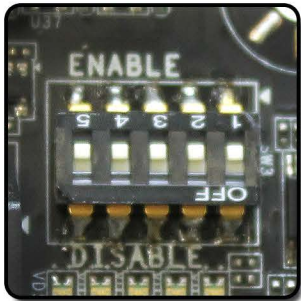
### BRAND NEW GUI BIOS INTERFACE

Focused on functionality



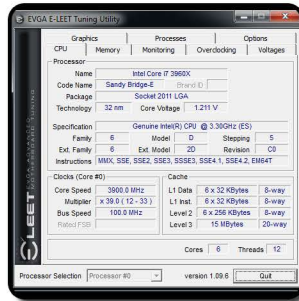
### PCI-E DISABLE SWITCH

Quickly and easily troubleshoot!



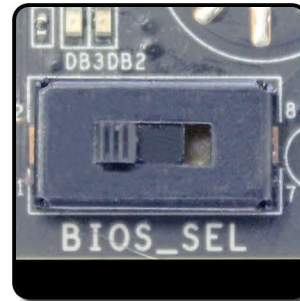
### E-LEET TUNING UTILITY

Adjust your overclocking in 0.5.



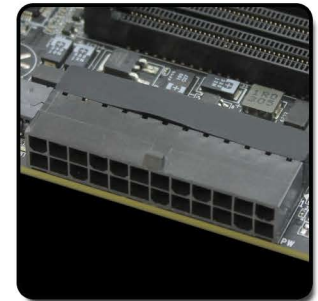
### TRIPLE BIOS SUPPORT

Use 3 separate profiles!



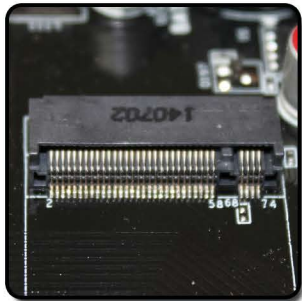
### RIGHT ANGLED 24 PIN

Improved cable management



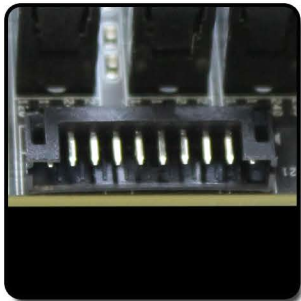
### INCLUDES M.2 SUPPORT

The newest peripheral standard



### EZ VOLTAGE READ POINTS

Easy read dedicated read points



### ONBOARD CPU TEMP MONITOR

Monitor CPU temps quickly & easily



### PASSIVE CHIPSET HEATSINK

No fans, lower noise, longer lifespan



### DUAL 8 PIN CPU POWER

Optional 8 pin provides up to 600W



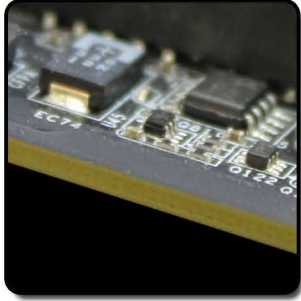
### 10 PHASE PWM

Cleanest variable power switching



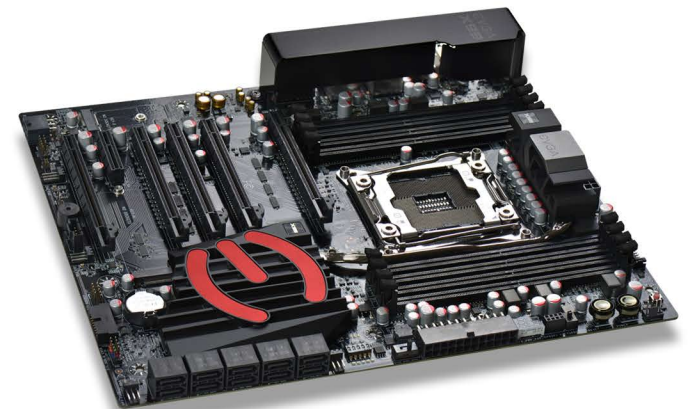
### 8 LAYER PCB

Improved overclock stability and PCB cooling



### HIGHER GOLD CONTENT

Lower inductance, better power delivery!



### PRODUCT WARRANTY

This product is covered under EVGA's 3 year warranty which covers parts and labor. Further warranty extension is available upon registration within 30 days of purchase. For more details please visit [www.evga.com/warranty](http://www.evga.com/warranty)

