



Getty Vocabularies: Terminology for Diversity and Inclusion

Patricia Harpring, Managing Editor
Getty Vocabulary Program
ITWG Meetings, 23-25 October 2024

Getty Vocabularies: Terminology for Diversity and Inclusion

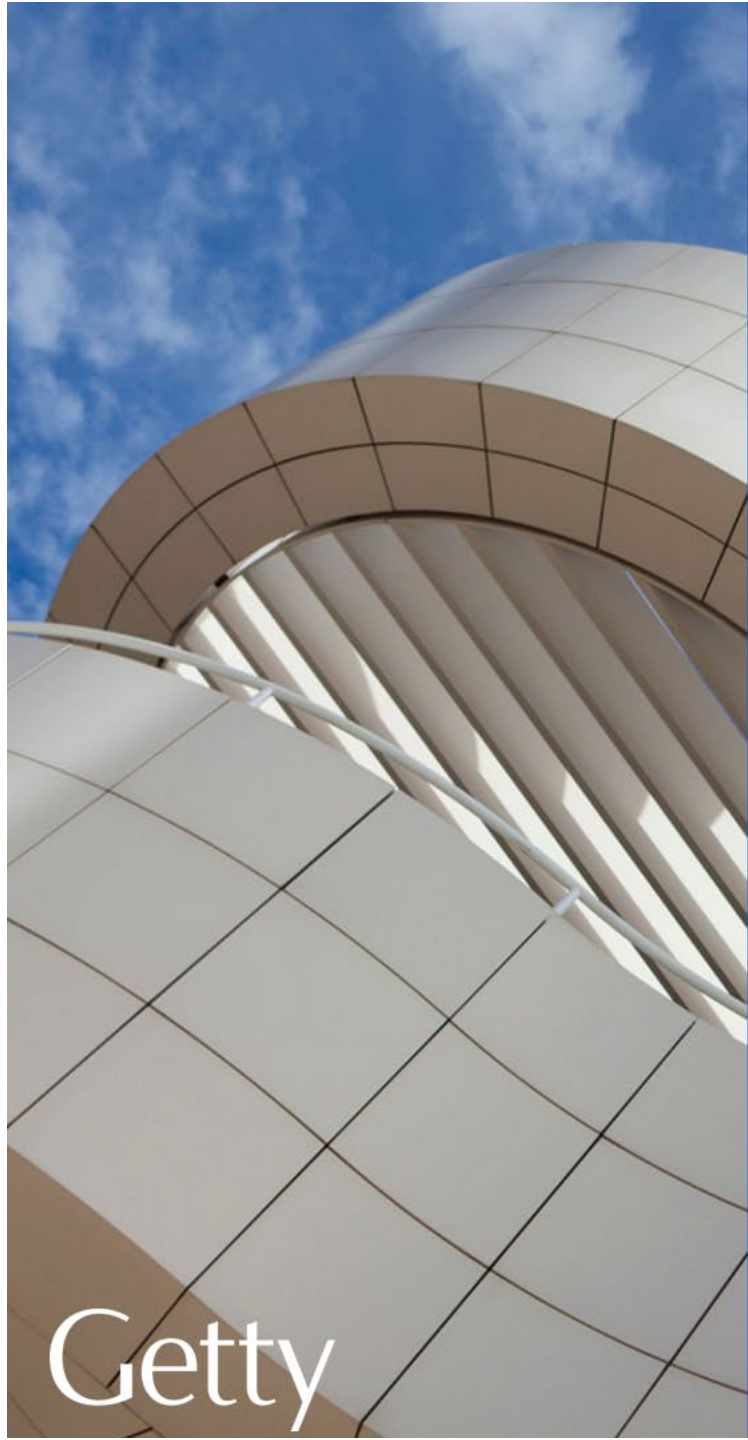
Table of Contents

- History
- Toward multicultural and inclusive terminology
- Overview of selected issues
- Achieving our goals

See longer, annotated version “Getty Vocabularies: Issues Surrounding Diversity ...”
https://www.getty.edu/research/tools/vocabularies/Vocabs_unbiased_terminology.pdf

See our quarterly News report to the users
https://www.getty.edu/research/tools/vocabularies/guidelines/aat_monthly_new_rec.s.pdf

Multilingual
Multicultural
Diversity
Inclusive
Equity
Unbiased
Antiracist
Accessible



Getty Vocabularies: Our History

Getty

Find Getty Vocabularies Online

Contact us:
vocab@getty.edu

Getty

<http://www.getty.edu/research/tools/vocabularies/index.html>

The screenshot shows the homepage of the Getty Research Institute. At the top, the logo and name 'The Getty Research Institute' are displayed. A navigation bar includes links for Exhibitions & Events, Special Collections, Library, Search Tools & Databases, Scholars & Projects, Publications, and About the GRI. Below the navigation bar, there are 'Print' and 'Share' icons. The main content area is titled 'Search Tools & Databases' and features a sidebar with a list of search tools. The 'Getty Vocabularies' section is highlighted with a red box and a red arrow pointing to the 'Click the heading' instruction. The main content area contains a 'NEW' announcement about the availability of Getty vocabularies as Linked Open Data, followed by a paragraph explaining their purpose and a list of four vocabularies: The Art & Architecture Thesaurus (AAT), The Getty Thesaurus of Geographic Names (TGN), The Cultural Objects Name Authority (CONA), and The Union List of Artist Names (ULAN). Each vocabulary entry includes a small icon and a brief description. On the right side, there is a 'Linked Open Data' logo and a 'See What's New' section with a list of multilingual and multi-cultural AAT terms.

The Getty Research Institute

Exhibitions & Events Special Collections Library Search Tools & Databases Scholars & Projects Publications About the GRI

Print Share

Search Tools & Databases


- Primo Search
- Getty Research Portal
- Collection Inventories & Finding Aids
- Photo Archive
- Research Guides & Bibliographies
- Digital Collections
- Article & Research Databases
- Collecting & Provenance Research
- BHA & RILA
- Getty Vocabularies**
 - Art & Architecture Thesaurus (AAT) ®
 - Cultural Objects Name Authority (CONA) ®
 - Getty Thesaurus of Geographic Names (TGN) ®
 - Union List of Artist Names (ULAN) ®
 - Contribute
 - Editorial Guidelines
 - Getty Vocabularies as Linked Open Data
 - Frequently Asked Questions
 - Obtain the Getty Vocabularies
 - Training Materials

Getty Vocabularies

NEW


The Getty vocabularies are now available as Linked Open Data. [Learn more.](#)

What is cinnabar? What is a rhyton? The Getty vocabularies contain structured terminology for art, architecture, decorative arts, archival materials, visual surrogates, conservation, and bibliographic materials. Compliant with international standards, they provide authoritative information for catalogers, researchers, and data providers. The vocabularies grow through contributions. In the new linked, open environments, they provide a powerful conduit for research and discovery for digital art history. To search the vocabularies, click on the links below.




The Art & Architecture Thesaurus (AAT)®

Catherine wheel or rose window? AAT is a structured vocabulary, including terms, descriptions, and other metadata for generic concepts related to art, architecture, conservation, archaeology, and other cultural heritage. Included are work types, styles, materials, techniques, and others.




The Getty Thesaurus of Geographic Names (TGN)®

Thebes or Diospolis? TGN is a structured vocabulary, including names, descriptions, and other metadata for extant and historical cities, empires, archaeological sites, and physical features important to research of art and architecture. TGN may be linked to GIS, maps, and other geographic resources.



The Cultural Objects Name Authority (CONA)®

Mona Lisa or La Gioconda? CONA compiles titles, attributions, depicted subjects, and other metadata about works of art, architecture, and other cultural



The Union List of Artist Names (ULAN)®

Titian or Tiziano Vecellio? ULAN is a structured vocabulary, including names, biographies, related people, and other

Click the heading

Linked Open Data
GETTY VOCABULARIES

See What's New

- Multilingual & multi-cultural AAT: Conservation terms; Dutch: 60,600; Spanish: 55,000; Chinese: 26,000; German: 20,500

Have a Question?

- Contact the Vocabulary Program
- Subscribe to GRI News

Find Getty Vocabularies Online

http://www.getty.edu/research/tools/vocabularies/index.html

Contact us:
vocab@getty.edu

Getty

The screenshot shows the Getty Research Institute website. At the top, the logo and name "The Getty Research Institute" are visible. Below this is a navigation bar with links for Exhibitions & Events, Special Collections, Library, Search Tools & Databases, Scholars & Projects, Publications, and About the GRI. A "Print" and "Share" icon are also present. The main content area is titled "Search Tools & Databases" and features a sidebar with a list of search tools including Primo Search, Getty Research Portal, Collection Inventories & Finding Aids, Photo Archive, Research Guides, Bibliography, Digital, Article, Collect, Resea, BHA &, and a dropdown for Getty. The main heading is "Getty Vocabularies" with a "NEW" tag. A text box states: "The Getty vocabularies are now available as Linked Open Data. Learn more." To the right, there is a "Linked Open data" logo with the text "GETTY VOCABULARIES". Below this is a "See What's New" section with a bullet point: "Multilingual & multi-cultural AAT: Conservation terms; Dutch: 60,600; Spanish: 55,000; Chinese: 26,000; German: 20,500". A "Have a Question?" section includes a link to "Contact the Vocabulary Program" and a "Subscribe to GRI News" link. The central focus is the "Art & Architecture Thesaurus® Online" search interface. It has a search box labeled "Find Term or ID:" containing the text "scroll OR papyri". Below the search box are radio buttons for "AND" and "OR", with "OR" selected. A "Note:" field is empty. To the right of the search box are "Help", "Search", and "Clear" buttons. Below the search interface are links for "Pop-up Search" and "Browse the AAT hierarchies". At the bottom, there is a "Copyright information" link and a "Search Tips" section with the text: "For the Find Term or Note field, you may use AND and OR (all in up".

Click the
heading

scroll OR papyri

Art & Architecture Thesaurus® Online

Search the AAT

Find Term or ID:

Help

Search

Clear

Note:

AND OR

Pop-up
Search

Browse the AAT
hierarchies

Copyright information

Search Tips

For the Find Term or Note field, you may use **AND** and **OR** (all in up

metadata about works of art,
architecture, and other cultural

including names, biographies,
related people, and other



1997

History

Art History Information Program (AHIP)

From 1980s, Vocabularies for cataloging, research & discovery, knowledge bases



History

International Terminology Working Group (ITWG)

Getty collaborates with international visual arts information community



International Terminology Working Group (ITWG)



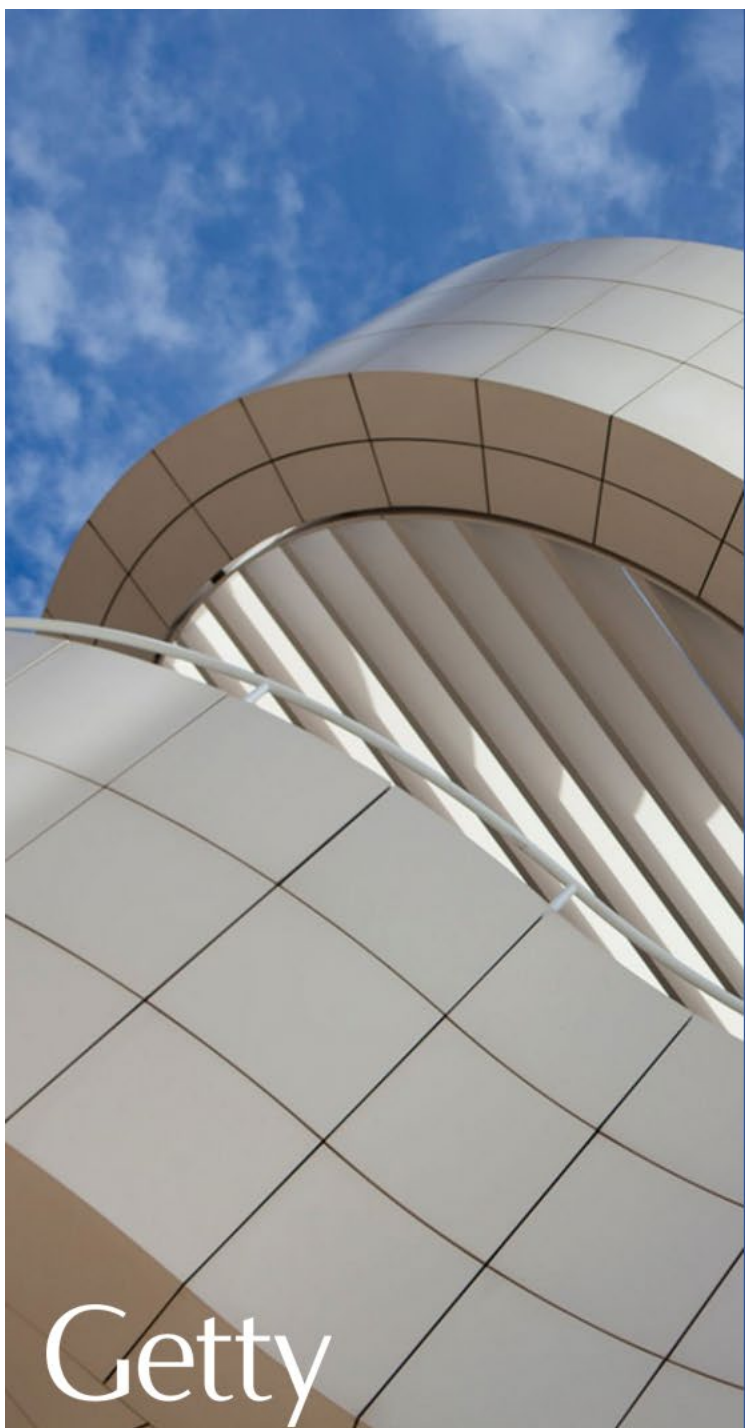
International Terminology Working Group (ITWG)





Murtha Baca





Getty Vocabularies: Toward Multicultural and Inclusive Terminology

Getty

Getty Vocabularies: Terms and rich contextual data

- In a global environment where we strive to be more open and equitable, while maintaining high standards for scholarship and research, Getty Vocabularies can be tools to facilitate diversity and inclusivity - in documentation and research of art history and related disciplines
- Getty Vocabularies are five structured vocabularies that comply with national and international standards for thesaurus construction; we GVP are active in the standards-building community, and Getty Vocabs used as examples in the standards
- Getty Vocabularies contain multilingual terminology and other rich related data for art, architecture, and other cultural heritage works

Getty Vocabularies: Terms and rich contextual data

AAT, *Art & Architecture Thesaurus*® generic concepts expressed by terms, rich data (*amphora, oil paint, Olmeca, sintering, asa-no-ha-toji*)

TGN, *Getty Thesaurus of Geographic Names*® about places, historical, lost; not GIS (*Diospolis, Acalán, Songhai Empire, Tetzoco*)

ULAN, *Union List of Artist Names*® about people and corporate bodies related to creation of art (*Vincent van Gogh, Cai Xiang, Crevole Master, Altobelli & Molins*)

IA, *Getty Iconography Authority*™ narratives, characters, historical events (*Olouaipilele, Ganesha, Xibalba, Niflheim, Bouddha couché*)

CONA, *Cultural Objects Name Authority*® about architecture, movable works, multiples, lost works (*Alesvara temple, Αγία Σοφία, Die große Welle, Fallingwater*)



Getty Vocabularies: Terms and rich contextual data

AAT, *Art & Architecture Thesaurus*[®] generic concepts expressed by terms, rich data (*amphora, oil paint, Olmeca, sintering, asa-no-ha-toji*)

TGN, *Getty Thesaurus of Geographic Names*[®] about places, historical, lost; not GIS (*Songhai Empire, Diospolis, Acalán, Tetzoco*)

ULAN, *Union List of Artist Names*[®] about people and corporate bodies related to creation of art (*Vincent van Gogh, Cai Xiang, Crevole Master, Altobelli & Molins*)

IA, *Getty Iconography Authority*[™] narratives, characters, historical events (*Olouaipipilele, Ganesha, Xibalba, Niflheim, Bouddha couché*)

CONA, *Cultural Objects Name Authority*[®] about architecture, movable works, multiples, lost works (*Alesvara temple, Αγία Σοφία, Die große Welle, Falling Water*)



Getty Vocabularies: Terms and rich contextual data

AAT, *Art & Architecture Thesaurus*® generic concepts expressed by terms, rich data (*amphora, oil paint, Olmeca, sintering, asa-no-ha-toji*)

TGN, *Getty Thesaurus of Geographic Names*® about places, historical, lost; not GIS (*Diospolis, Acalán, Songhai Empire, Tetzoco*)

ULAN, *Union List of Artist Names*® about people and corporate bodies related to creation of art (*Vincent van Gogh, Cai Xiang, Crevole Master, Altobelli & Molins*)

IA, *Getty Iconography Authority*™ narratives, characters, historical events (*Olouaipipilele, Ganesha, Xibalba, Niflheim, Bouddha couché*)

CONA, *Cultural Objects Name Authority*® about architecture, movable works, multiples, lost works (*Alesvara Temple, Αγία Σοφία, Die große Welle, Falling Water*)



Getty Vocabularies: Terms and rich contextual data

AAT, *Art & Architecture Thesaurus*® generic concepts expressed by terms, rich data (*amphora, oil paint, Olmeca, sintering, asa-no-ha-toji*)

TGN, *Getty Thesaurus of Geographic Names*® about places, historical, lost; not GIS (*Diospolis, Acalán, Songhai Empire, Tetzoco*)

ULAN, *Union List of Artist Names*® about people and corporate bodies related to creation of art (*Vincent van Gogh, Cai Xiang, Crevole Master, Altobelli & Molins*)

IA, *Getty Iconography Authority*™ thesaurus re. narratives, characters, historical events (*Ganesha, Olouaipilele, Xibalba, Niflheim, Bouddha couché*)

CONA, *Cultural Objects Name Authority*® about architecture, movable works, multiples, lost works (*Alesvara Temple, Αγία Σοφία, Die große Welle, Falling Water*)



Getty Vocabularies: Terms and rich contextual data

AAT, *Art & Architecture Thesaurus*® generic concepts expressed by terms, rich data (*amphora, oil paint, Olmeca, sintering, asa-no-ha-toji*)

TGN, *Getty Thesaurus of Geographic Names*® about places, historical, lost; not GIS (*Diospolis, Acalán, Songhai Empire, Tetzoco*)

ULAN, *Union List of Artist Names*® about people and corporate bodies related to creation of art (*Vincent van Gogh, Cai Xiang, Crevole Master, Altobelli & Molins*)

IA, *Getty Iconography Authority*™ narratives, characters, historical events (*Olouaipipilele, Ganesha, Xibalba, Niflheim, Bouddha couché*)

CONA, *Cultural Objects Name Authority*® about architecture, movable works, multiples, lost works (*Fallingwater, Alesvara Temple, Αγία Σοφία, Die große Welle,*)



Key Characteristics of Getty Vocabularies

To enable goals:

Multilingual
Multicultural
Diversity
Inclusive
Equity
Unbiased
Antiracist
Accessible

- Standards-compliant = ISO, NISO
- Authoritative, verified by sources and contributors
- • **Flexible standards** = accepted, buy-in
- Reliable future, compiled by dependable institution
- • **Structured, linked, relationships**
- Scope = visual arts disciplines, defined
- Purpose = cataloging, research, developers
- • **Inclusive, multilingual, multicultural** are supported
- Target audiences are defined
- Most-used vocabularies for the target audience
- Unique global coverage of defined domain
- • **Rich knowledge bases**, not only 'value vocabularies'
- • **Collaborative, responsive, contributions**
- • **Coreferences** to overlapping resources
- Multiple formats, for diverse users
- Open license, free of charge

Policies on Diversity

Multilingual
Multicultural
Diversity
Inclusive
Equity
Unbiased
Antiracist
Accessible

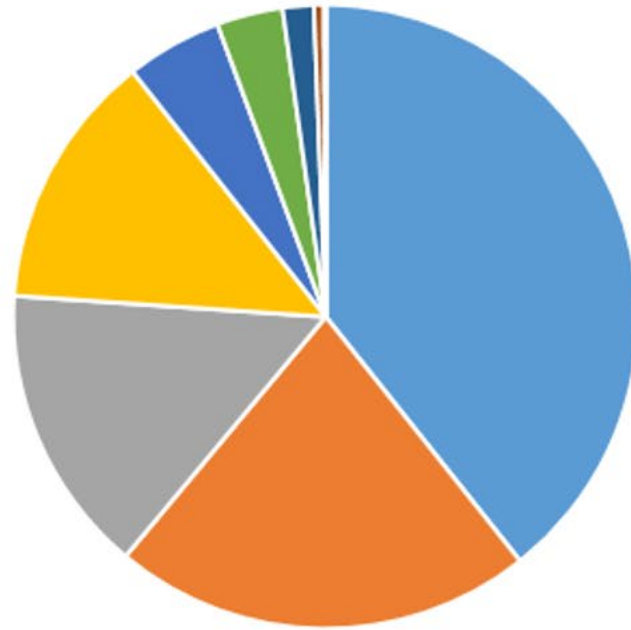
- Getty Vocabularies provide terminology used by community, do not prescribe *how to use terms*
- Instead assist in decision-making by providing contextual information
 - Flagging 'preferences' / defaults
 - Additional rich data = diverse POV
 - Obsolete terms are not deleted (since they provide access)
- GVP relies upon user community to contribute
- Contribute to Getty Vocabularies to actuate change
 - E.g., form consortia to reach consensus
 - E.g., survey expert organizations (e.g., tribal communities)

Mission and goals

Measuring Current Status

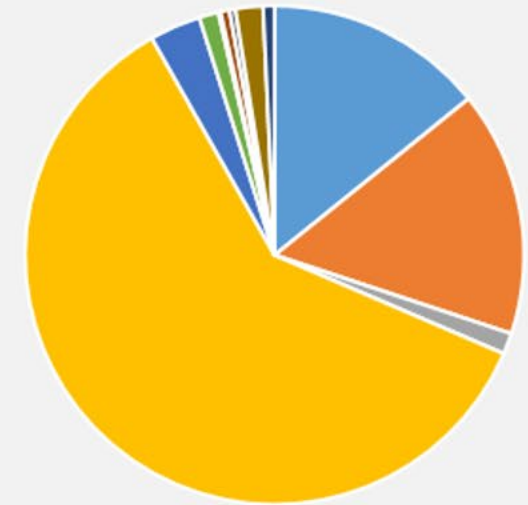
Status of the data

Number of Terms by Language in AAT



- English
- Chinese
- Dutch
- Spanish
- German
- Italian
- French
- Latin
- Portuguese
- Greek
- Nahuatl
- Other

Total Records by Nat/Culture/Eth in ULAN



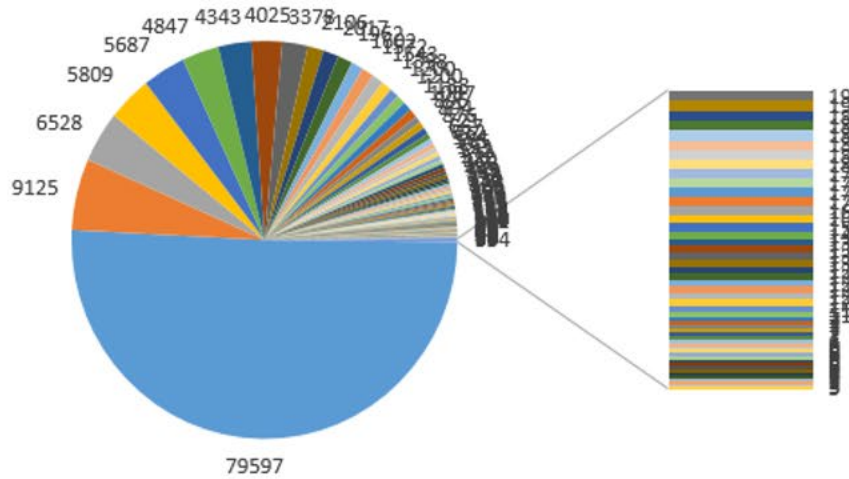
- Other
- American
- Canadian
- European
- Mexico, C&S Am
- Native Am
- African Am
- Middle E
- Indian subc
- East Asian
- African

Mission and goals

Measuring Current Status

Distribution of users

Total users by country for online Vocab search
12 months



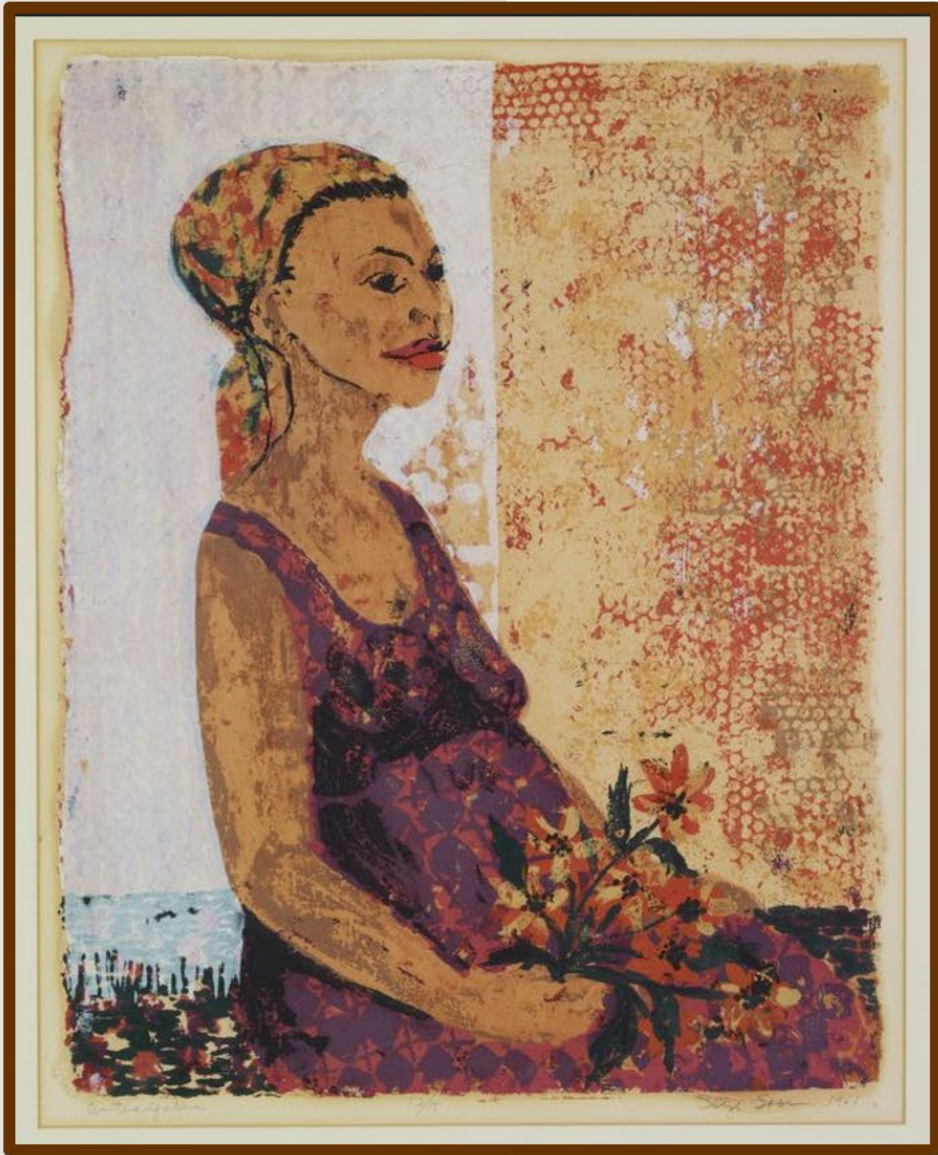
Mission and goals

Multilingual
Multicultural
Diversity
Inclusive
Equity
Unbiased
Antiracist
Accessible

Let's Consider How to Reach Our Goals...

- In this presentation, let us consider how the Getty Vocabularies can better reach goals for diversity and inclusion.
- My purpose today is to demonstrate **how the Getty Vocabularies already have many features, a data model, and fields that will allow them to receive and present the terminology necessary for inclusive and reparative description**, research and discovery, and different POVs
- These features were included in the Vocabularies decades ago, originally to allow representation of art history data –
- and critically -- now - we propose that they **can be more fully exploited to serve an expanded and new purpose**
- I will also lay out the issues we need to resolve in going forward with our goals
- including more easily receiving contributions from you and others of our user community.

Getty Vocabularies Used in an Object Record



Catalog Level: item **Classification:** prints

Work Type: [serigraph](#)  [AAT](#)

Title: Anticipation

Creator: Betye Saar  [ULAN](#)

Creation Date: 1961

Location: [Museum of Modern Art](#) (MoMA)  [ULAN](#)

[New York](#), New York, USA  [TGN](#)

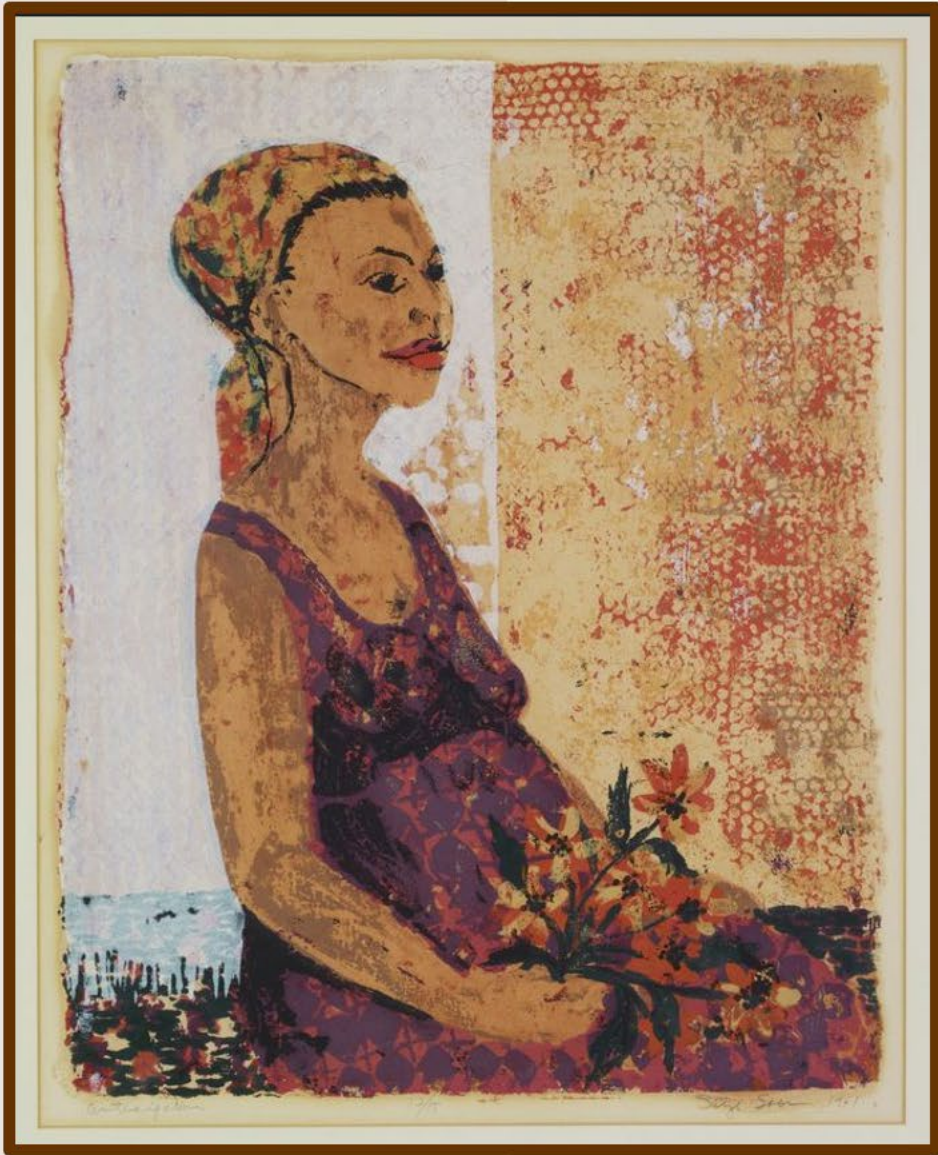
No.: 1163.2018 **Credit:** Candace King Weir Endowment

Materials: [serigraph](#) on [paper](#)  [AAT](#)

Dimensions Display: 66 x 55.9 cm **Edition:** Edition 12/15

Subject: [self portrait](#)  [AAT](#)

Getty Vocabularies Used in an Object Record



Catalog Level: item Classification: prints

Work Type: serigraph



AAT

Creator: Betye Saar

Creation Date: 1961

Location: Museum of Modern Art

New York, New York

No.: 1163.2018 Credit

Materials: serigraph on paper

screen prints (preferred,C,U,

screen print (C,U,English,AD,U

screenprints (C,U,English,UF,

serigraphs (C,U,LC,English,UF

serigraph (C,U,LC,English,UF,U

[AAT_300033618 / 1000919775]

Dimensions Display: 66 x 55.9 cm Edition: Edition 12/15

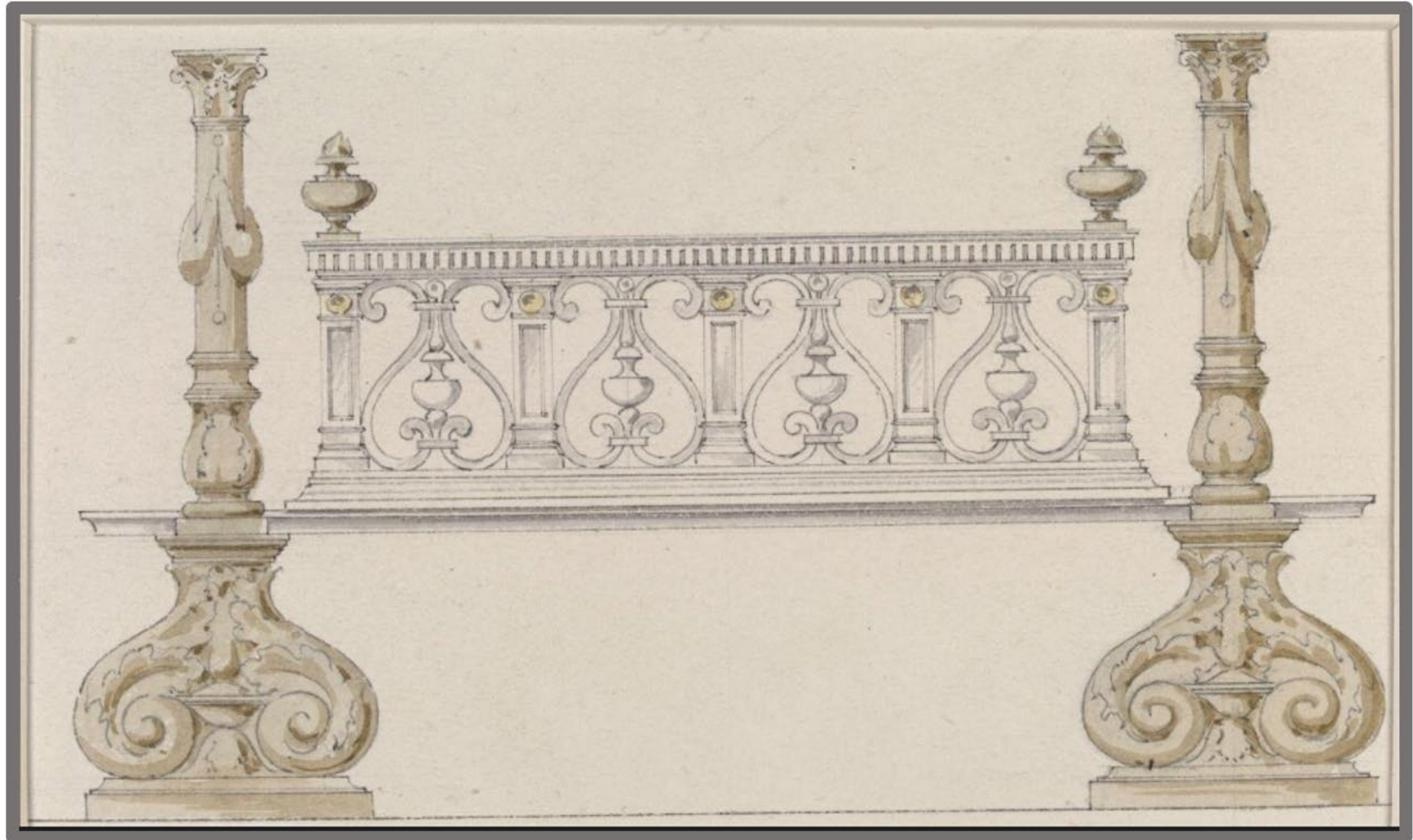
Subject: self portrait



AAT

Flexible Standards

What do you call the vertical objects depicted in this drawing?



Flexible Standards

Critical to obtain buy-in from target audiences, not authoritarian

May use either **firedogs** or **andirons**

AAT_300161848

Terms:

andirons ([preferred](#), [C](#), [U](#), [English](#), [A](#))
andiron ([C](#), [U](#), [English](#), [A](#))
firedogs ([C](#), [U](#), [English](#), [U](#))
fire dog ([C](#), [U](#), [English](#), [U](#))
fire-dogs ([C](#), [U](#), [English](#), [U](#))
fire dogs ([C](#), [U](#), [English](#), [U](#))
dogs fire ([C](#), [U](#), [English](#), [U](#))

V&A 8431-1863

Firedogs

ca. 1590-1620; unknown Venetian



V&A GILBERT.614-2008

Andirons

ca.1670; Cooqus, Jean Gérard



Met Museum 1975.1.1470

Firedogs

mid-16th century; unknown French

Met Museum 49.73.5

Andirons

1700–1800; unknown American



Getty Museum 93.DF.49

Firedogs

about 1700; unknown artist

Getty Museum 94.SB.77

Andirons

ca. 1540–1545; unknown Italian

Views of the data

Contextual data,
structure, practice
→ inclusive and
multicultural
content

UNIQUE IDS

LANGUAGES

PREFERENCES
= views of data

DATES, HIST/CUR

RELS/LINKS--POLY

CREDIT/WARRANT

COREFERENCES

AAT record (partial)

AAT ID: 300161848

Terms:

andirons (pref, en-P,PN)

[1000161848] *Contrib.* [VP,BHA-P, Luna-P]

Sources. Winterthur object list 1987-P, RILA
Subject Headings-P, OED, Phipps, Colonial ... *

Date: from 17th century

Start: 1600 **End:** 9999

andiron (alt,en,SN)

[1000294539] *Contrib.* [VP,BHA, Luna] *Sour**

firedogs (UF,en,PN)

[1000259195] *Contrib.* [VP,BHA] *Sources.* *

hand-irons (UF,en,PN) (Hist)

[1000897762] *Contrib.* [BHA] *Sources.* *

Date: from 17th century

aundrynes (UF,en,PN) (Hist)

[1000897762] *Contrib.* [BHA] *Sources.* *

Date: from 14th century

chenets (D,fr-P,PMN; UF,en)

[1000304478] *Contrib.* [CHIN/RCIP; JPGM] *Sour**

Feuerböcke (D,de-P,N)

[1000657813] *Contrib.* [IfM-SMB-PK] *Sources**

Terms (cont):

haardijzers (D,nl-P, PN) [1000493897]

Contrib. [RKD-AAT ned] *Sources.* *

morillos (D,es-P) [1000440495]

Contrib. [CDBP-SNPC] *Sources.* *

柴架 (D,zh-P) [1000557635]

Contrib. [AS-Academia Sinica] *Sources.* *

[...]

Associative Relationships

conjoined with ... fireplace grates
[300425523]

used/located in... fireplaces [300052267]

Date: from early 1800s

Start: 1800 **End:** 9999

Hierarchical Relationships (poly)

Objects Facet

.. Furnishings and Equipment(G)

.... Tools and Equipment (hierarchy name) (G)

..... visual works (works) (G)

..... equipment (G)

..... <equipment by process> (G)

..... <fire-making and controlling equip...> (G)

..... fireplace accessories (G)

..... andirons(G)



Note: Devices, usually metal, comprising vertical elements and often a horizontal bar, supported by legs, and used to support logs in a fireplace. May be used with a "fireplace grate." ... *Contrib.* [VP,BHA] *Sources.* Winterthur; OED; Beckman, Furnishings *Chinese (traditional)* 用於擺放在垂直物體上的裝置，具有橫桿，以短小支架支撐，用於支撐火爐內的大型木材。 *Contrib.* [AS] *Sources.* * *Dutch* Toestellen met een horizontale balk op een verticale staaf, ... *Contrib.* [RKD-AAT ned] *Sources.* * *German* Vorrichtung mit einer horizontalen Stange über einem vertikalen... *Contrib.* [IfM-SMB-PK] *Sourc**

Contributors: VP,BHA,Luna, CHIN/RCIP, AS,RKD,IfM-SMB-PK

Sources: Newman, Illustrated Dictionary (1996); Nomenclature (2018)

<http://nomenclature.info/nom/1848>;

Winterthur Museum (1986-); LOC Auth,

<https://lccn.loc.gov/sh85004904> ; Parks

Canada Descriptive Dictionary (1988), AASLH data (2016-), Fleming and Honour, Penguin Dictionary (1989), 27; [...]

allowing for
Views
of the data

UNIQUE IDS

LANGUAGES

PREFERENCES
= views of data

DATES, HIST/CUR

RELS/LINKS--POLY

CREDIT/WARRANT

COREFERENCES

AAT ID: 300161848 ←

Terms:

andirons (pref, en-P,PN)

[1000161848] ←

andiron (alt,en,SN)

[1000294539] ←

firedogs (UF,en,PN)

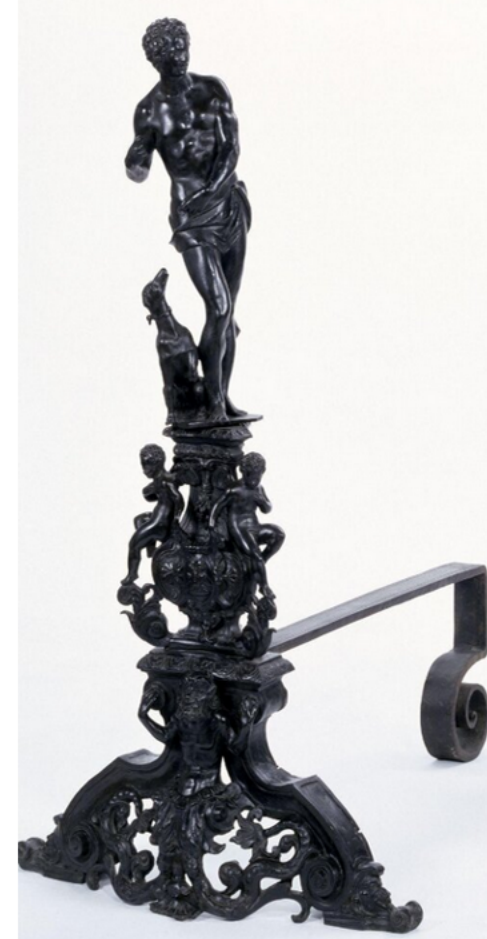
[1000259195] ←

aundrynes (UF,en,PN) (Hist)

[1000897762] ←

chenets (D,fr-P,PMN; UF,en)

[1000304478] ←



allowing for
Views
of the data

UNIQUE IDS

LANGUAGES

PREFERENCES
= views of data

DATES, HIST/CUR

RELS/LINKS--POLY

CREDIT/WARRANT

COREFERENCES

AAT ID: 300161848

Terms:

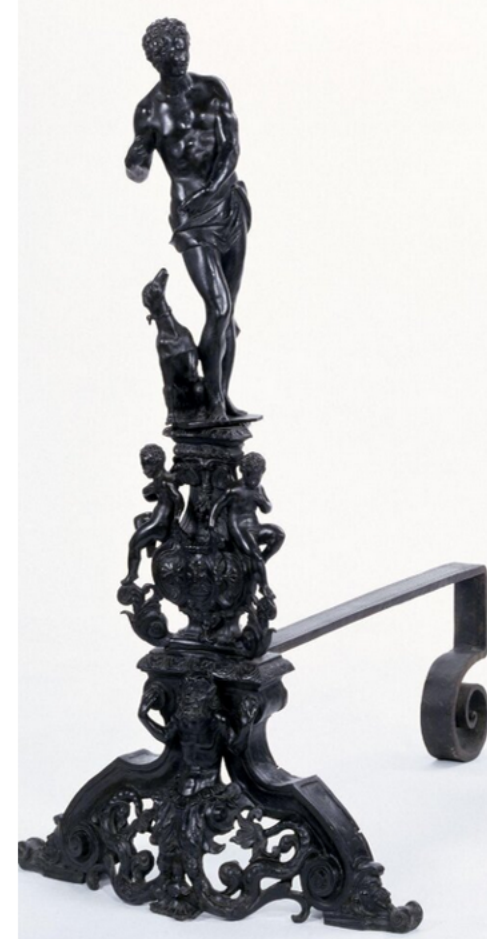
andirons(Pref, English-Pref,PN)
[1000161848]

andiron (alt,English,SN)
[1000294539]

firedogs (UF,English,PN)
[1000259195]

aundrynes (UF,English,PN) (H)
[1000897762]

chenets (D,French-Pref,PMN;
[1000304478]



allowing for
Views
of the data

UNIQUE IDS

LANGUAGES

PREFERENCES
= views of data

DATES, HIST/CUR

RELS/LINKS--POLY

CREDIT/WARRANT

COREFERENCES

AAT ID: 300161848

Terms:

andirons (Pref, en-P,PN)
[1000161848]

Date: from 17th century
Start: 1600 *End:* 9999

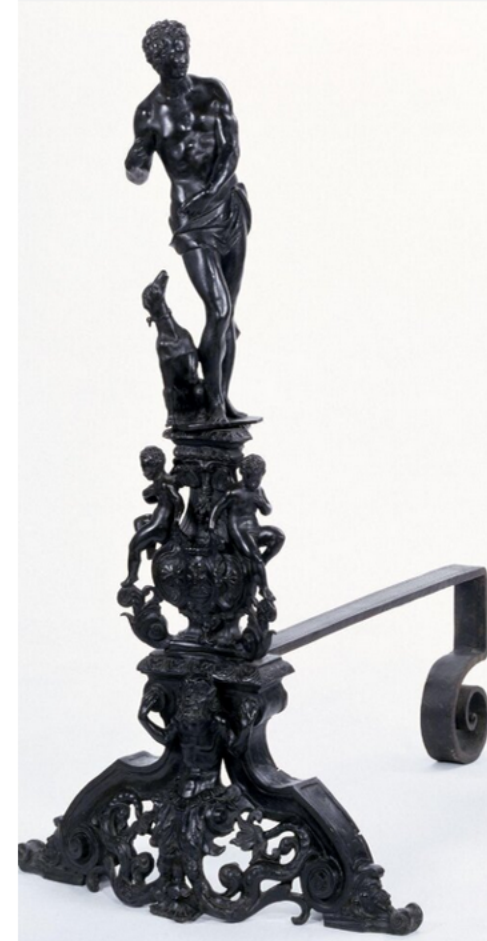
andiron (alt,English,SN)
[1000259195]

firedogs (UF,English,PN)
[1000294539]

aundrynes (UF,English,PN) (H)
[1000897762]

Date: from 14th century
Start: 1300 *End:* 1800

chenets (D,French-Pref,PMN;
UF,en)



allowing for
Views
of the data

UNIQUE IDS

LANGUAGES

PREFERENCES
= views of data

DATES, HIST/CUR

CREDIT/WARRANT

COREFERENCES

RELS/LINKS--POLY

AAT ID: 300161848

Contributors:

VP, BHA, Luna, CHIN/RCIP, AS, RKD, IfM-SMB-PK

Sources:

Newman, Illustrated Dictionary (1996);

Nomenclature (2018),

<http://nomenclature.info/nom/1848> ;

Winterthur Museum (1986-);

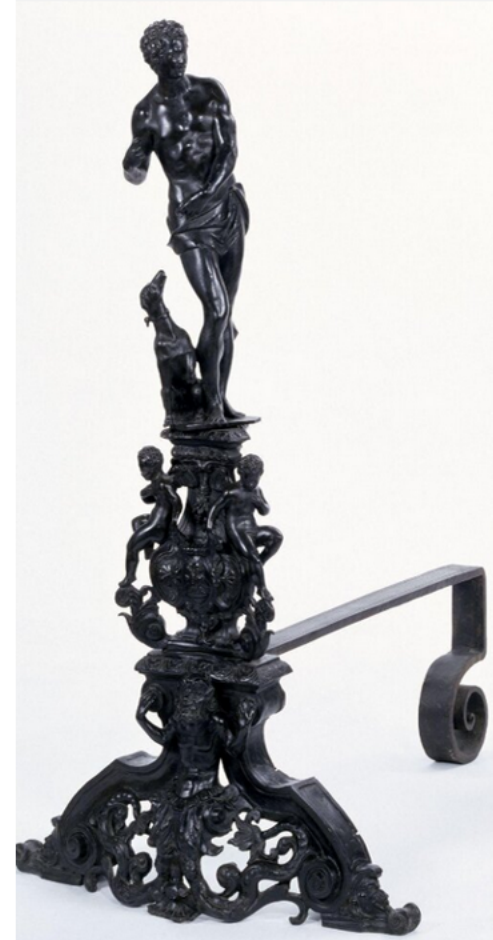
LOC Auth,

<https://lcn.loc.gov/sh85004904> ;

Parks Canada Descriptive Dictionary (1988);

AASLH data (2016-);

Fleming and Honour, Penguin Dictionary (1989); 27;



allowing for
Views
of the data

UNIQUE IDS

LANGUAGES

PREFERENCES
= views of data

DATES, HIST/CUR

CREDIT/WARRANT

COREFERENCES

RELS/LINKS--POLY

AAT ID: 300161848

Associative Relationships ←

conjoined with ... fireplace grates [300425523]

used/located in... fireplaces [300052267]

Hierarchical Relationships (poly) ←

Objects Facet

.. Furnishings and Equipment(G)

.... Tools and Equipment (hierarchy name) (G)

..... visual works (works) (G)

..... equipment (G)

..... <equipment by process> (G)

..... <fire-making and controlling equip...> (G)

..... fireplace accessories (G)

..... andirons(G)

Objects Facet

.. Furnishings and Equipment(G)

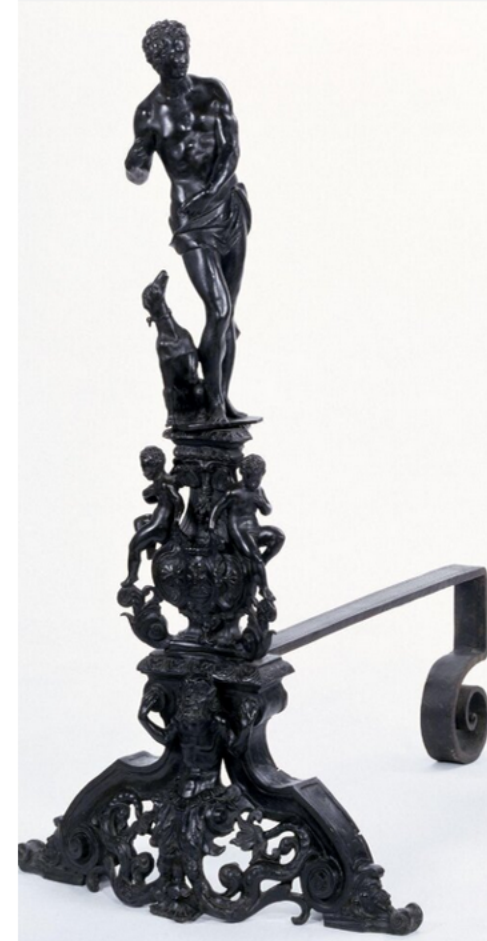
.... Tools and Equipment (hierarchy name) (G)

..... visual works (works) (G)

..... equipment (G)

..... supporting equipment (G) ←

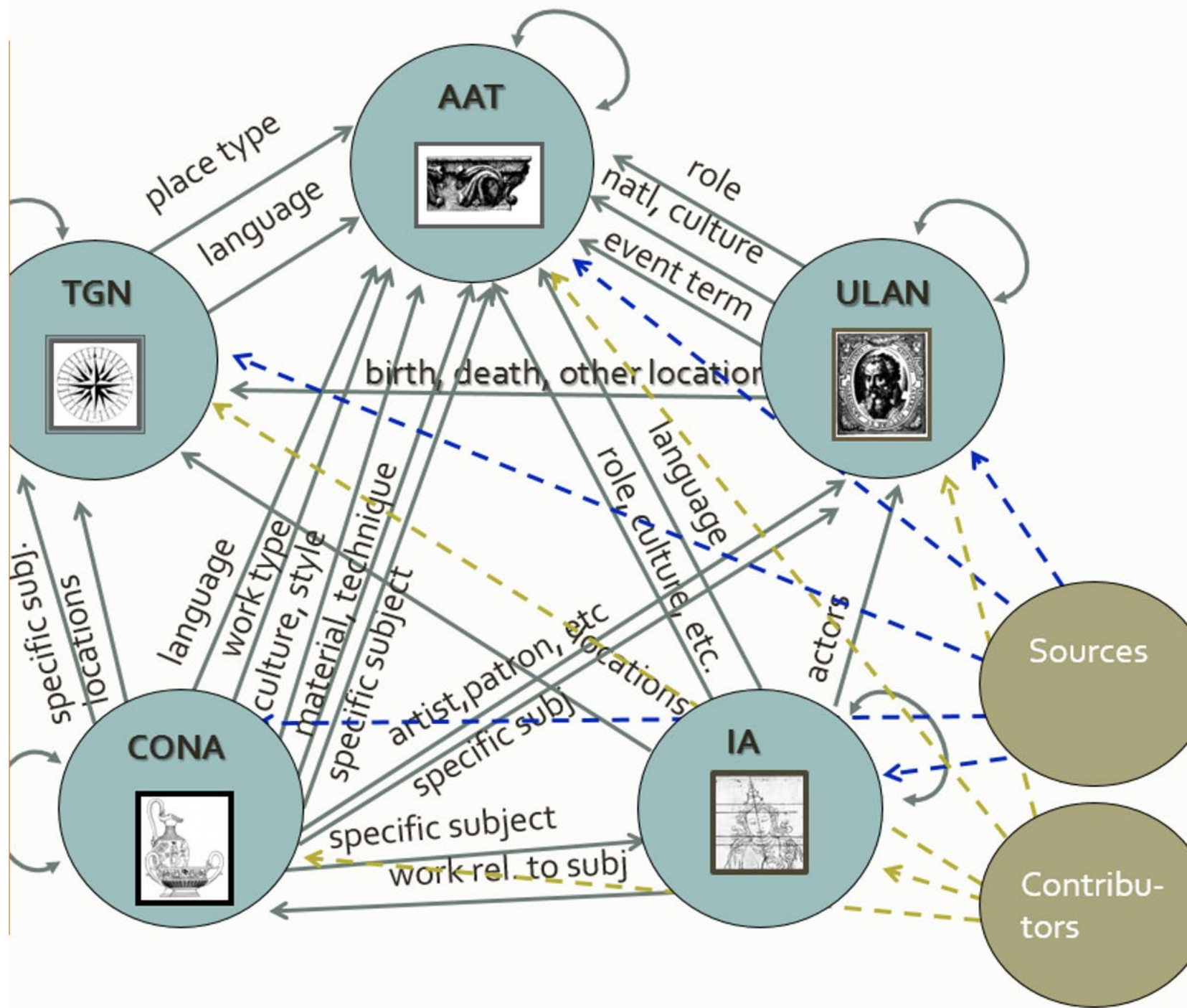
..... andirons [N] (G)



allowing for Views of the data

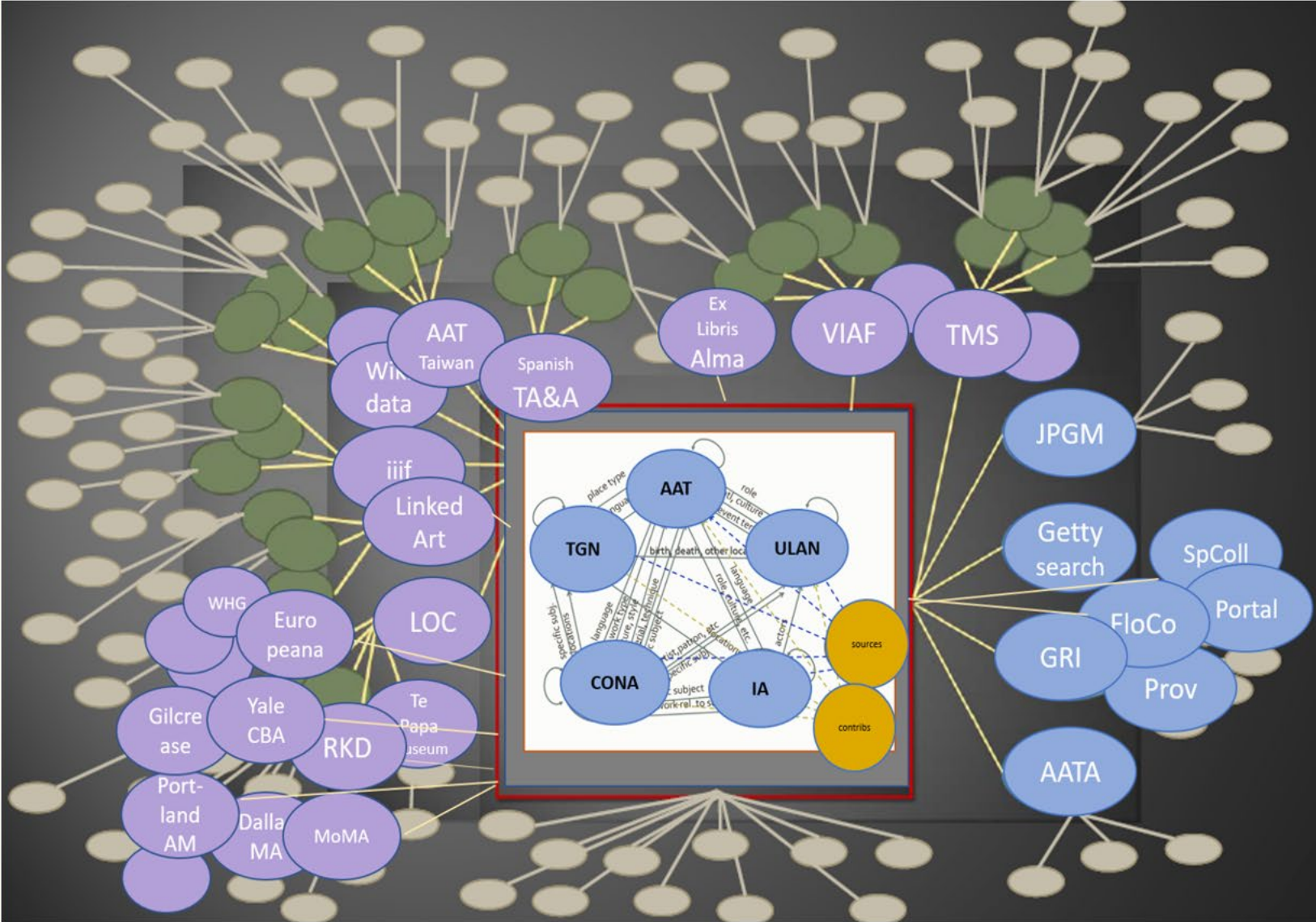
→ Unique features aid in facilitating inclusive & multicultural content

Getty Vocabularies Data Are Linked



Data used for research and discovery more broadly

Getty Vocabularies Data Are Linked





Overview of Selected Issues

Getty

Mission and goals

Multilingual
Multicultural
Diversity
Inclusive
Equity
Unbiased
Antiracist
Accessible

Defining the Issues

- Structure and practice
- • Unbiased terminology
- Express ambiguity or uncertainty
- • Various cultural points of view
- Various cultural traditions
- Ethnicity
- • Gender identity, preferences
- Historical points of view
- • Personal privacy balanced vs. ability to research
- • Accessibility and inclusivity for user community

originally in art history

Issue: Avoid use

Example: 'lebetes' vs 'dinoi'

ID: 300263134

Page Link: <http://vocab.getty.edu/page/aat/300263134>

lebetes (vessels (containers), <containers by form>, ... Furnishings and E

Note: Refers to ancient Greek small, deep bowls that curve in sharply at the shoulder and have a distinct neck with overhanging lip and round bottom designed so the bowl could sit on a stand; they may have feet. A lebes is equipped with a pair of upright handles at the shoulder and often with a

Terms:

lebetes [preferred, C, U, English-P, D, U, PN](#)
[Dutch-P, D, U, U](#)

lebes (C, U, English-P, D, U, U)
[Spanish-P, D, U, PN](#)

dinoi (lebetes) [D, U, U](#)
[Chinese \(traditional](#)

[P, D, U, U](#)
dinoi (lebetes) ([H, U, English, UF, U, U](#))

"Other" Flag

- Formula
- Symbol
- Official term
- Provisional term
- Avoid Use**
- Deprecated
- Pejorative

Note: incorrect usage




In a new context – may facilitate use of unbiased terminology

Issue: Avoid use

AAT

ID: 300230899 Record Type: [co](#)
Page Link: <http://vocab.getty.edu/page/aat/300230899>

 **enslaved people** (<people by state or condition>, people (agents), [P](#))

Note: Those who are treated as the property of and are entirely subject to sale, purchase, or birth.

Terms:

- enslaved people** ([Preferred](#), [C](#), [U](#), [English-P,D,U,PN](#))
- [enslaved persons](#) ([C](#), [U](#), [English](#), [AD,U,SN](#))
- [enslaved](#) ([C](#), [U](#), [English](#), [UF,U,PN](#))
- [slave](#) ([C](#), [U](#), [English](#), [LC,English](#))
- [slave's \(person's\)](#) ([C](#), [U](#), [English](#), [UF,U,N](#))
- [slaves' \(peoples'\)](#) ([C](#), [U](#), [English](#), [UF,U,N](#))
- [people, enslaved](#) ([C](#), [U](#), [English](#), [UF,U,U](#))
- [奴隸](#) ([C](#), [U](#), [Chinese \(traditional\)](#)-[P,D,U,U](#))
- [nú lì](#) ([C](#), [U](#), [Chinese \(transliterated Hanvu Pinyin\)](#)-[P,UF,U,U](#))

“Other” Flag

- Formula ^
- Symbol
- Official term
- Provisional term
- Avoid Use
- Deprecated
- Pejorative v

Flag to indicate “Avoid Use” →

Issue: Avoid use

Getty
Vocabularies are
responsive with
relatively fast
turnaround

LCSH heading **Slaves** changing to **Enslaved persons**
March 7, 2022

In September 2021, a proposal was submitted to change **Slaves** to **Enslaved persons**. The Library of Congress took the proposal under advisement for more research and evaluation, and determined that the proposal would be re-considered and a decision would be made in March 2022.

LIBRARY OF CONGRESS AUTHORITIES

Help 

New Search

Search History

Headings List

Start Over

LC control no.: sj2021051779

LCCN Permalink: <https://lcn.loc.gov/sj2021051779>

HEADING: Slaves

150 __ |a Slaves

450 __ |a Enslaved persons

550 __ |a Slavery

Allow
expression of
ambiguity or
uncertainty

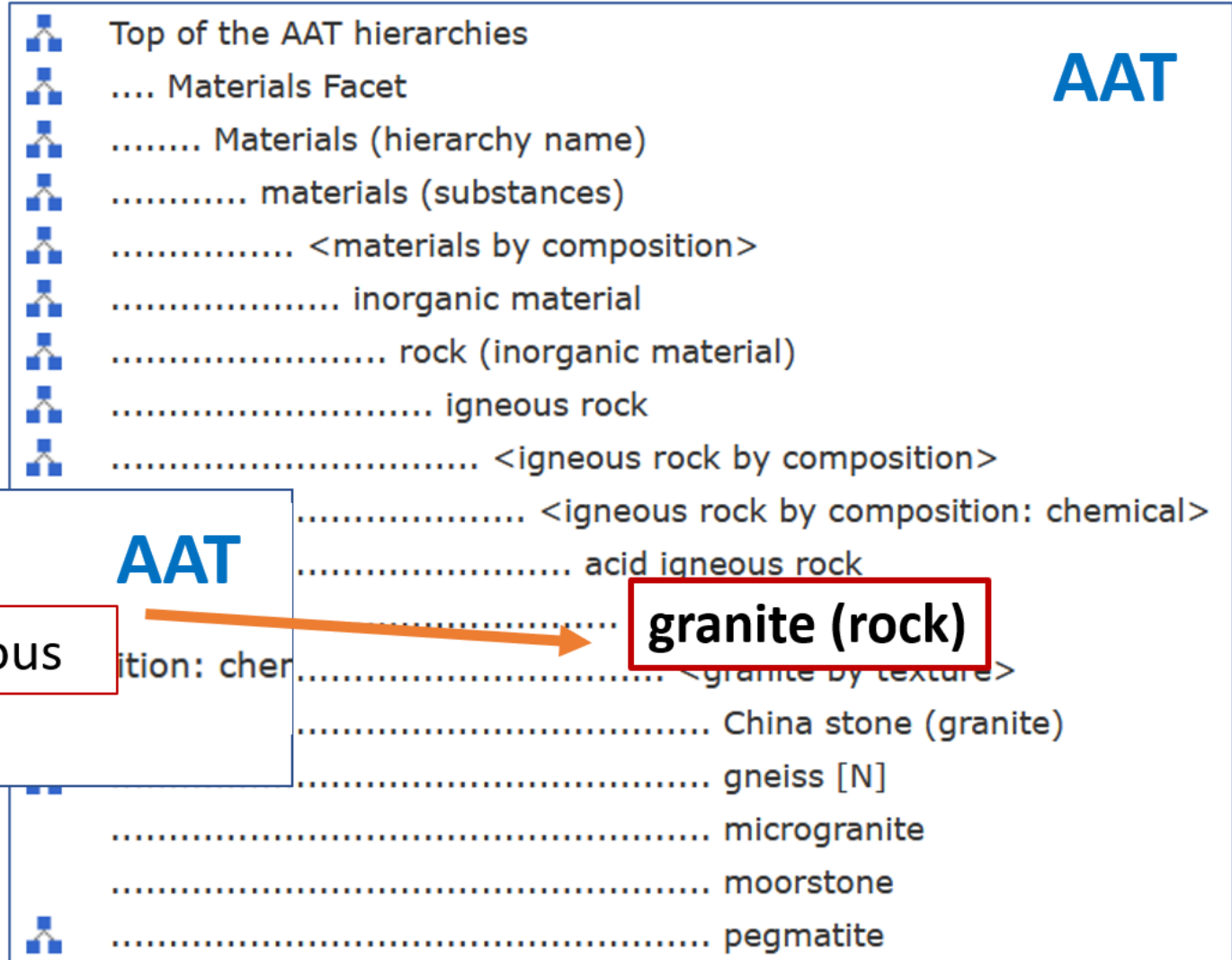
Issue: Indeterminacy

“granite” is classified by
geological origin

But in art history,
cataloger may not know the
specific material

AAT allows for this

Classified with igneous rocks



ID: 300011183

Page Link: <http://vocab.getty.edu/page/aat/300011183>

granite (rock) (acid igneous rock, <igneous

AAT

granite (rock)

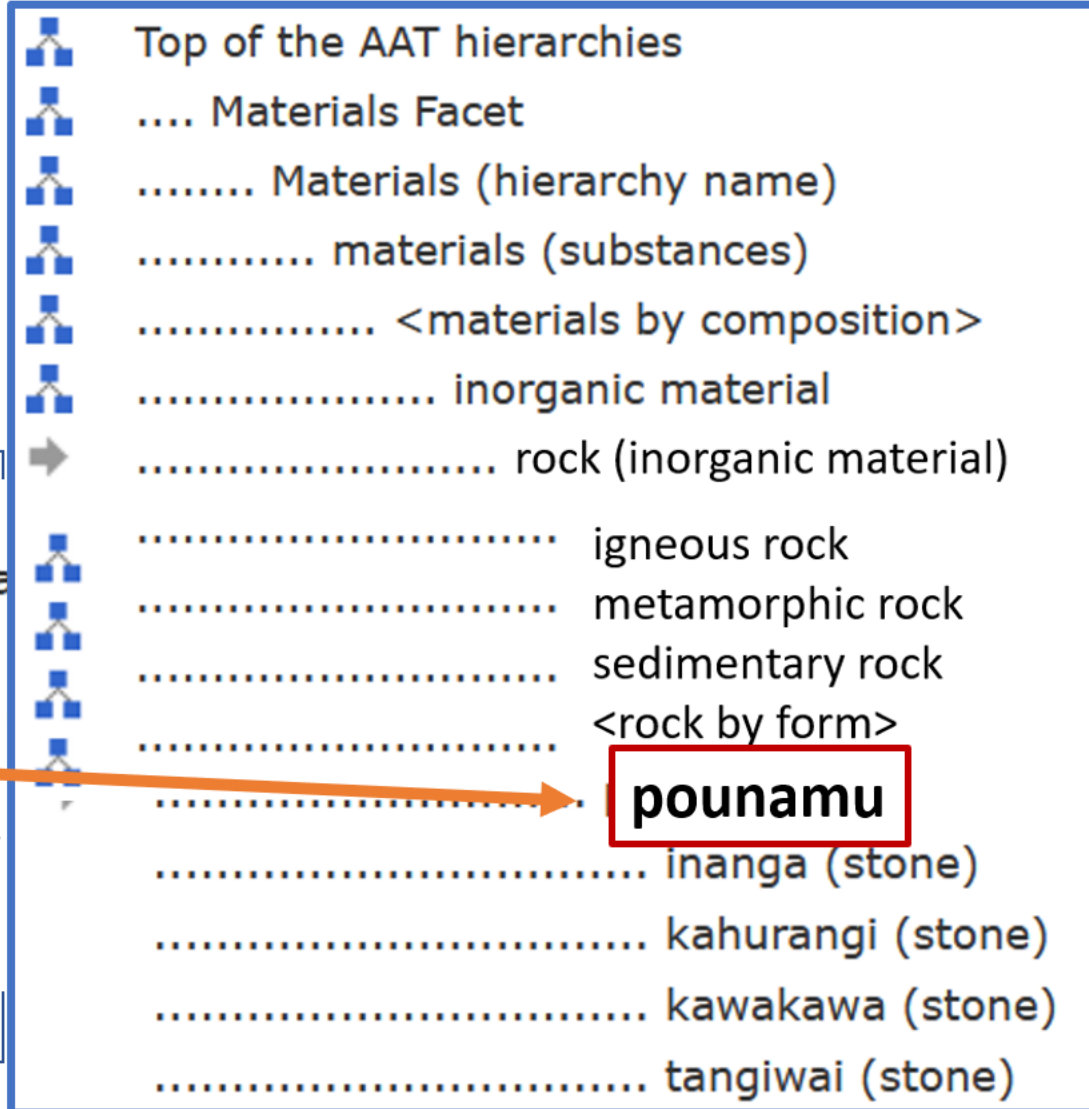
Issue: Indeterminacy

AAT

Allow expression of ambiguity or uncertainty

Or to express cultural differences

Classified differently by Maori culture

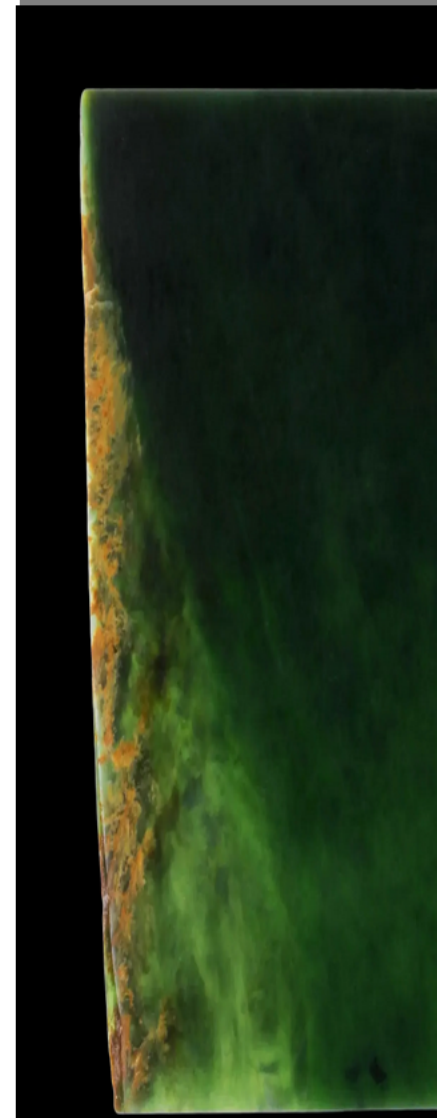


ID: 300379291

Page Link: <http://vocab.getty.edu/page/aa>

pounamu (rock (inorganic material

Note: General term for greenstone found on South Island, New Zealand. The term refers to any of three different types of stone: nephrite, bowenite, and serpentinite. ...



- ↳ [Top de las jerarquías AAT](#)
- ↳ [Faceta objetos](#)
- ↳ [Comunicación verbal y visual](#)
- ↳ [Obras visuales \(nombre de jerarquía\)](#)

- ↳ [obras visuales](#)
- ↳ [<obras visuales por medio o técnica>](#)
- ↳ [escultura](#)
- ↳ [<esculturas por función>](#)
- ➔ [esculturas funerarias](#)
- [aloalo](#)
- [disco bi](#)
- [placas funerarias](#)
- [cong \(vasija ceremonial\) \[N\]](#)

- [kimbi](#)
- [árbol del dinero](#)
- [piedras pictóricas \(relieves\) \[N\]](#)
- ↳ [efigies funerarias](#)
- ↳ [efigies reclinadas](#)
- [losas sepulcrales \[N\]](#)
- [ushabti](#)

Multilingual terminology and interconnectedness allow for multiple points of views

Issue: Indigenization

AAT

Reflect
indigenous
preferences

ID: 300016954

Record Type: [concept](#)

Page Link: <http://vocab.getty.edu/page/aat/300016954>

 **Ancestral Puebloan** (Pre-Columbian Pueblo styles, Pre-Columbian Southwestern North American styles, ... Styles and Periods (hierarchy name))

Note: Refers to the style and culture of a North American civilization that existed in the "Four Corners" area, where the boundaries of the states of Arizona, New Mexico, Colorado, and Utah intersect. The culture flourished from the first century CE to around 1300 CE, and descendants of this cultural group probably include the modern Pueblo Indians now living in New Mexico and Arizona. The style is noted for fine baskets, pottery, cloth, ornaments, tools, and great architectural achievements, including cliff dwellings and apartment-house-like villages, or pueblos. In some classification schemes, the modern Pueblo cultures are considered later phases of this people, though most schemes end around 1300 CE.

Ancestral Puebloan

Terr **Ancestral Puebloan** ([preferred](#),[C,U](#),[English-P,D,U,A](#)) preferred by Native Americans, and in most common usage

Ancestral Pueblo ([C,U](#),[English,UF,U,U](#))

Moki (Ancestral Puebloan) ([C,U](#),[English,UF,U,U](#))

Moqui (Ancestral Puebloan) ([C,U](#),[English,U](#))

Basketmaker-Pueblo ([C,U](#),[English,UF,U,U](#))

Hisatsinom ([C,U](#),[English,UF,U,U](#))

([Hopi,UF,U,U](#))

Oude Pueblo ([C,U](#),[Dutch-P,D,U,U](#))

יִסְאָזִי ([C,U](#),[Hebrew,D,A](#))

Pueblo Ancestral ([C,U](#),[Spanish-P,D,U,U](#))

cultura Pueblo ([C,U](#),[Spanish,AD,U,U](#))

A ([U](#))

A ([U](#))

Anasazi

Anasazi Culture ([H,U](#),[English,UF,U,U](#))

- Formula
- Symbol
- Official term
- Provisional term
- Avoid Use**
- Deprecated
- Pejorative

dead," used by the Hopi to identify s

modern usage, non-preferred by Pueblo peoples



Issue: Indigenization

AAT

ID: 300016773

Page Link: <http://vocab.getty.edu/page/aat/300016773>

Athapaskan (culture or style) (Western Subarctic Native American ...

styles>, ... Styles and Periods (hierarchy name))

Note: Refers to North American Indians culture of a language group that encompasses many linguistic cultural groups. It is an arbitrary term derived from Lake Athabaska by Albert Gallatin in 1836 to he believed were centered around this area. People belonging to the Athapaskan language group the subarctic region as well as areas in New Mexico and Arizona. Spelling of the term varies widely in multiple forms in a single source. 'Athapaskan' has been in general use since 1930. 'Dene' or 'Inde' determined descriptive term used by this group, and is sometimes used synonymously with Athapaskan used to describe a larger category that includes Tlingit and Haida language groups.

Terms:

Athapaskan (culture or style) ([preferred](#), [C,U](#), [English-P,D,U,A](#))
([Spanish-P,D,U,U](#))

([Dutch-P,D,U,U](#))

Athabaskan ([C,U](#), [English](#), [UF,U,U](#))

Athapascan ([C,U,LC](#), [English](#), [UF,U,U](#))

Athabascan ([C,U](#), [English](#), [UF,U,U](#))

~~阿塔巴斯卡 (阿塔巴斯卡) (C,U,LC,English,UF,U,U)~~

Related concepts:

preceded **Hopi (culture or style)**

..... (Western Pueblo, Pueblo (Native American style), ... Styles and Periods (hierarchy name))
[300017763]

preceded **Teddito Yellow Ware (style)**

Reflect indigenous preferences

Can default terms and hierarchies reflect indigenous peoples' POV?

Issue: Indigenization

AAT

ID: 300016773

Page Link: <http://vocab.getty.edu/page/aat/300016773>

Athapaskan (culture or style) (Western Subarctic Native American ...)









Reflect indigenous preferences

Can default terms and hierarchies reflect indigenous peoples' POV?

Hierarchical Position:

-  [Styles and Periods Facet](#)
-  [Styles and Periods \(hierarchy name\)](#) (G)
-  [<styles, periods, and cultures by region>](#) (G)
-  [Americas, The](#) (G)
-  [Native American](#) (G)
-  [Native North American](#) (G)
-  [<Arctic and Subarctic Native American styles>](#) (G)
-  [Western Subarctic Native American styles](#) (G)
-  [Athapaskan \(culture or style\)](#) (G)

Additional Parents:

-  [Styles and Periods Facet](#)
-  [Styles and Periods \(hierarchy name\)](#) (G)
-  [<styles, periods, and cultures by region>](#) (G)
-  [Americas, The](#) (G)
-  [Native American](#) (G)
-  [Native North American](#) (G)
-  [Southwestern Native American](#) (G)
-  [Athapaskan \(culture or style\)](#) (G)

s many ling
in 1836 to
age group
varies wide
'Dene' or 'I'
with Athaj

Issue: Decolonization

AAT

Terminology
for colonial
populations,
diaspora

-  **Black (general, race and ethnicity)**
(race (group of people), culture-related concepts, ... Associated
-  **African American**
(modern North American, modern American, ... Styles and Periods (hie
-  **African Brazilian**
(modern Latin American, modern American, ... Styles and Periods
-  **African-Brazilian**
-  **Colonial African**
(African (general, continental cultures), <styles, periods, and c
(hierarchy name)) [300108565]
 - Afro-Caribbean (culture and style)
 -  Afro-Portuguese (culture and style)
 - Bini-Portuguese
 - Sapi-Portuguese

Issue: Gender sensitivity


Allow user to choose preferred terms: gender identity, preferences

AAT

ID: 300438736

Record Type: [concept](#)

Page Link: <http://vocab.getty.edu/page/aat/300438736>







 **gender non-binary** (gender identity, sociological concepts, ... Associated Concepts (hierarchy name))

Note: Persons who gender-identify outside the male/female binary...

gender non-binary (**preferred**,C,U,English-P)

NB (C,U,A,English,UF)

enby (C,U,N,English,UF)


-  Top of the AAT hierarchies
-  Associated Concepts Facet
-  Associated Concepts (hierarchy name)
-  social science concepts
-  sociological concepts
-  gender identity
- agender
- bigender
- dyadic
- feminine
- gender-fluid
- gender-neutral
- gender non-binary
- genderqueer
- intersex
- masculine
- pansexual
- polygender
- questioning
- two-spirit

Issue: Avoid biased POV

TGN

Offensive
reference to
Native
American
female






ID: 2128621
Page Link: <http://vocab.getty.edu/page/tgn/2128621>

 **Alder Spring (spring)**

Coordinates:
Lat: 48 03 00 N *degrees minutes* Lat: 48.0500 *dec*
Long: 120 09 00 W *degrees minutes* Long: -120.1500

Alder Spring (preferred,C,V)
Squaw Creek Spring (H,V,PJ)

Hierarchical Position:

-  [World](#) (facet)
-  [North and Central America](#) (continent) (P)
-  [United States](#) (nation) (P)
-  [Washington](#) (state) (P)
-  [Alder Spring](#) (spring) (P)

Place Types:
spring (**preferred, C**)

Sources and Contributors:

- Alder Spring..... [VP Preferred]
..... [USGS, GNIS Digital Gazetteer \(1994\)](#) GNIS53000245
- Squaw Creek Spring..... [VP]
..... [USGS, GNIS Digital Gazetteer \(1994\)](#) GNIS53000245

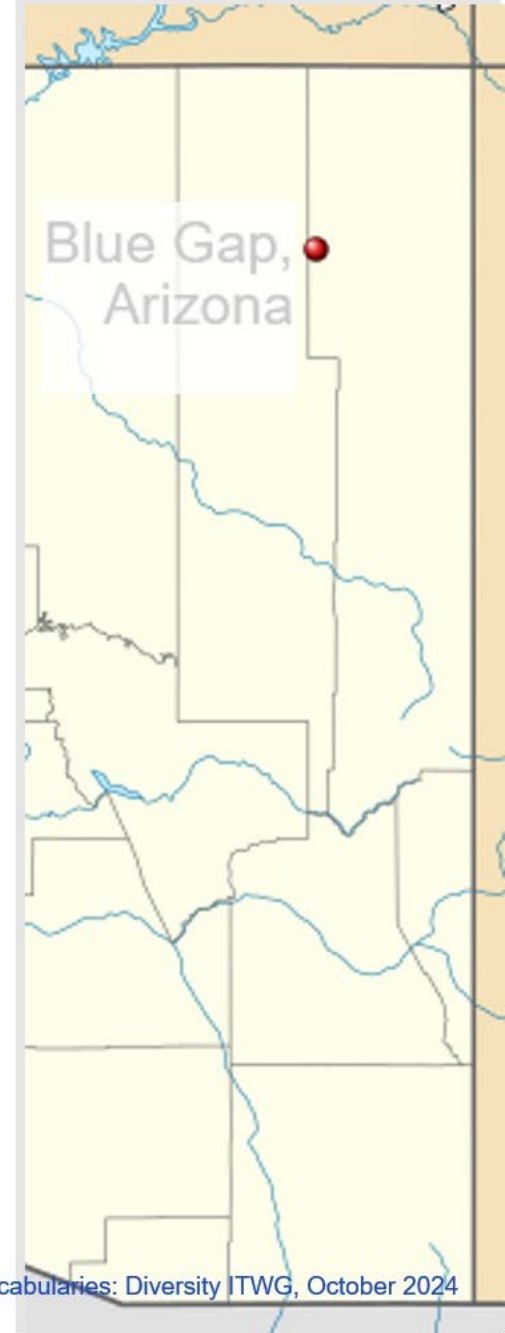
Subject: [VP]
..... [USGS, GNIS Digital Gazetteer \(1994\)](#) GNIS53000245

Dropdown Menu:

- FIPS
- Site name
- Provisional Name
- Abbreviation
- Avoid Use
- Deprecated
- Pejorative**

Issue: Avoid biased POV

TGN



- Top of the TGN hierarchy (hierarchy root)
- World (facet)
- North and Central America (continent)
- United States (nation)
- **Navajo Nation (tribal nation)**
- Chinle Agency (administrative division)
- Blue Gap (inhabited place) [N]
- Chinle (inhabited place) [N]
- Cottonwood (inhabited place) [N]
- Lukachukai (inhabited place) [N]
- Many Farms (inhabited place) [N]
- Nazlini (inhabited place) [N]
- Pinon (inhabited place) [N]
- Rough Rock (inhabited place) [N]
- Salina (inhabited place) [N]
- Tsaile (inhabited place) [N]
- Wheatfields (inhabited place) [N]

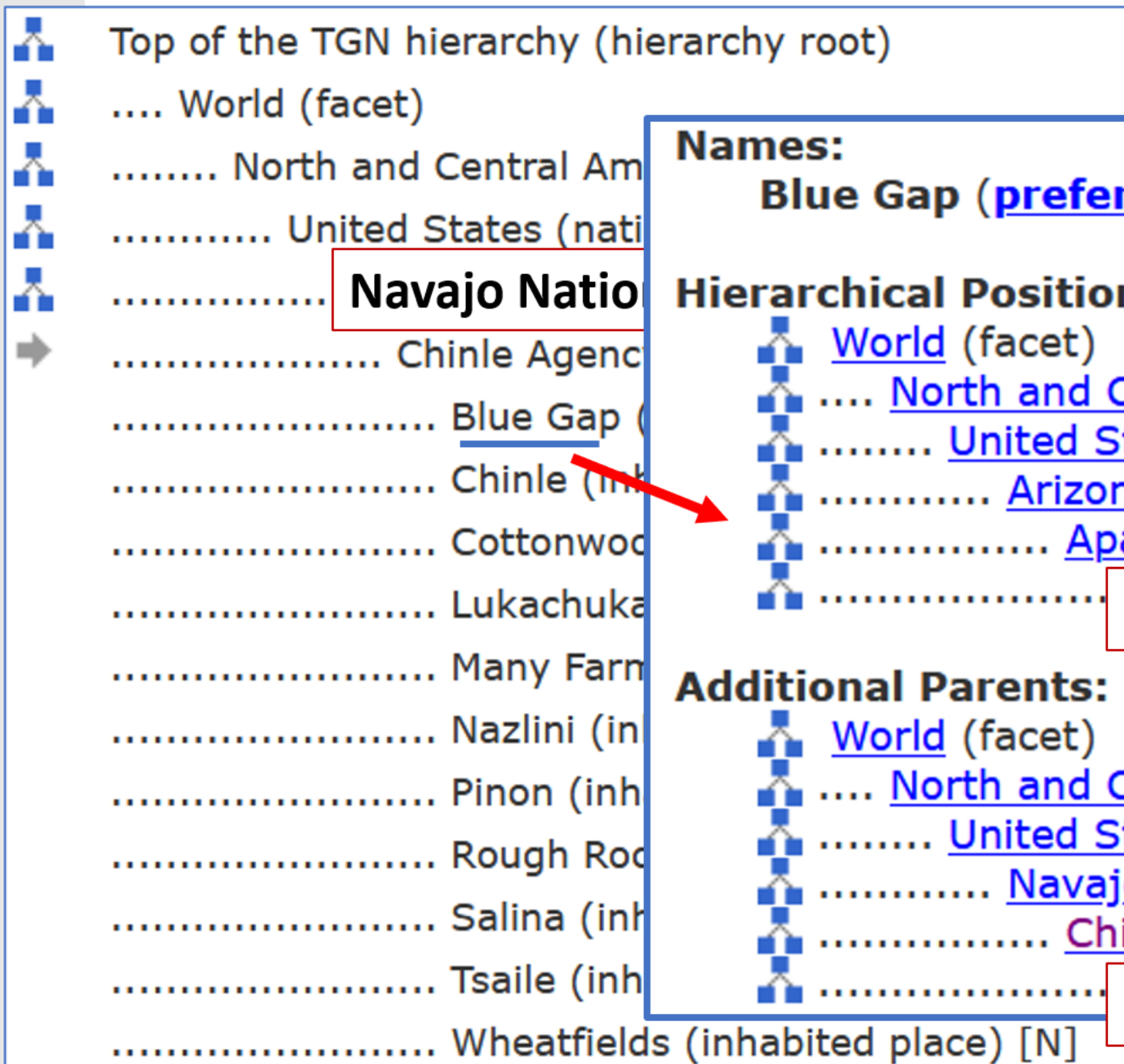
Be sensitive to biased current or historical points of view

How to represent overlapping jurisdictions

Issue: Avoid biased POV

TGN

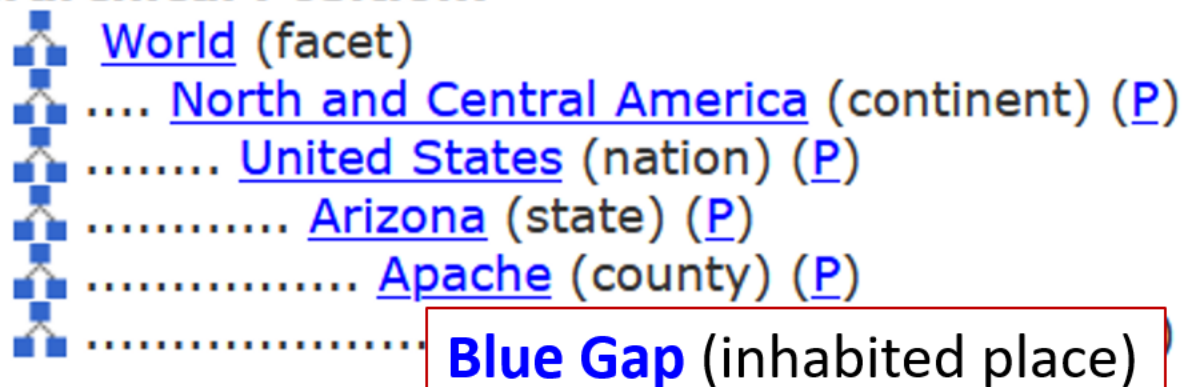
Be sensitive to biased current or historical points of view



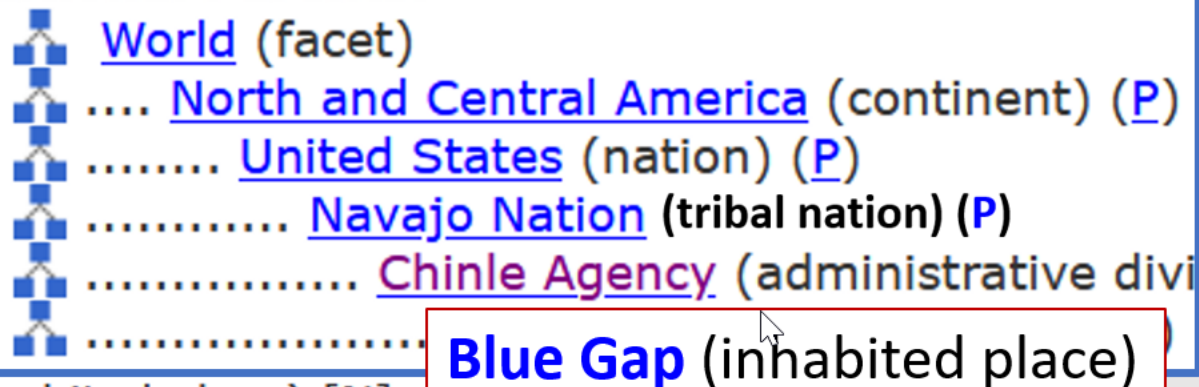
Names:

Blue Gap (preferred, C, V)

Hierarchical Position:



Additional Parents:



Issue: Avoid biased POV

CONA

ID: 700000141

Page link: <http://vocab.getty.edu/page/cona/700000141>

Images: 1 2

Hagia Sophia (church (building)); Anthemios of Tralles (Byzantine architect and mathematician ...; orig from ...)

Note: Commissioned by the Emperor Justinian, built in Constantinople in the 6th century. The structure was built in the amazingly short time of about six years, being completed in 537 CE. The architects were Tralles and Isidore of Miletus. For over 900 years it was Christendom's grandest place of worship; after the Ottomans (1454), it became one of the principal mosques of Istanbul for almost 500 years.

Titles:

Hagia Sophia

(preferred. Lang: **English-pref** Status: **loan term**)

Αγία Σοφία

(Lang: **Greek-pref**)

Ayasofya

(Lang: **Turkish-pref**)

Santa Sofia

(Lang: **Spanish-pref**; Lang: **Italian-pref**)

Sancta Sapientia (C,U,undetermined,U,U)

Santa Sophia (C,U,undetermined,U,U)

Holy Wisdom (C,U,English,U,U)

Ayasofya-i Kebir Cami-i Şerifi

(Lang: **Turkish**)

Ayasofya Müzesi

(Lang: **Turkish**)



Be sensitive to biased current or historical points of view

Which name is 'preferred'

Issue: Avoid biased POV

CONA

Be sensitive to biased current or historical points of view

Which work type is 'preferred'

Hagia Sophia

dates when Work Types apply

Work Types:

church (building)

Date: 532-ca.1453

Start: 532 End: 1455

mosque (building)

Date: after 1453-1931; again from 2021

Start: 1453 End: 9999

museum (building)

Date: from 1935

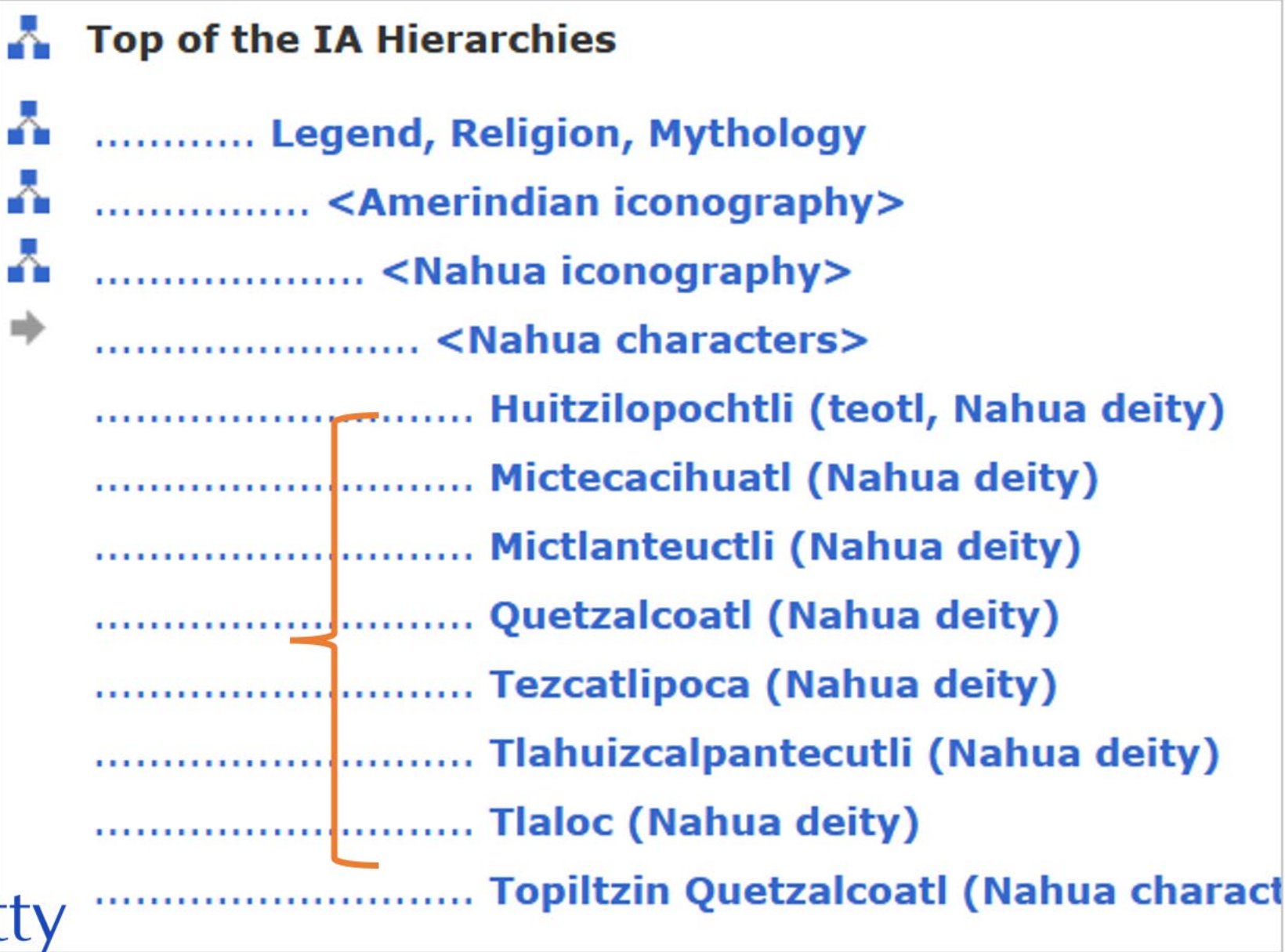
Start: 1935 End: 9999

basilica (work by form)

Classifications:

architecture (preferred)





Issue: Diverse cultural views

IA

Note: Nahua deity associated with storms and rain. Represented with large round eyes or "goggles" and with pointed or curling elements at the mouth, sometimes interpreted as fangs. Related deities with similar iconography are found across Mesoamerica and from at least the 1st century BCE.

Tlaloc (Nahua deity) (preferred, English-P,D,N)
(Eastern Huasteca Nahuatl-P,D,N)
(Spanish-P,D,N)
(Classical Nahuatl-P,D,N)

Totiotizin Tlaloc (Nahua deity) (Eastern Huasteca Nahuatl-P,D,N)
ahuahquez, tlatomonianih (Nahua deity) (Eastern Huasteca Nahuatl-P,D,N)

Related Iconography:
consort/spouse of [Chalchiuhtlicue](#)
.....(Legend, Religion, Mythology, Amerindian iconography, (Aztec deity)) [901002066]

Other Relationships:
role/characteristic is [deity](#)
.....(people in religion, people in religion and related occupation)



Issue: Diverse cultural views

ULAN

Acknowledge various cultural traditions – naming traditions

ID: 500060426

Page Link: <http://vocab.getty.edu/page/ulan/500060426>

Record Type: [Person](#)

Katsushika Hokusai (Japanese printmaker, painter, 1760-1849)

Note: Noted for works of ukiyo-e ('pictures of the floating world') in painting and printmaking over 70 years during which, he adopted over 30 names, typically associated with shibubun. He studied Ming painting in China, the Kanō school, Sumiyoshi school, Rinpa painting, a period in Japan; he also learned from Western-style painting. Types of works include paintings; surimono ('printed things'; small-edition woodblock prints), and nishikie for eirihon (illustrated books), kyōka ehon (illustrated books of poems), and printed the main shunga (erotic picture) artists of the Edo period. Hokusai is thought to have a sign

Names:

Katsushika Hokusai ([preferred](#), [V](#), [display](#))

Hokusai Katsushika ([V](#), [index](#))

Katsushika, Hokusai ([V](#), [LC](#))

Hokusai ([VCN](#))

葛飾 北斎 ([V](#), [Japanese](#), [NA](#), [U](#))

Shunrō ([V](#))

Sōri gō (artist's name), used in early career, name taken from his Rinpa-school master Tawaraya Sōri

Other Flags

Common Name ^

Full Name

Signature

Misspelling

Art Name

Avoid Use

Deprecated

"Other" flags

Not Applicable

Official name

Pseudonym

Birth name

Abbreviation

Common name

Full name

Signature

Misspelling

Standard name

Married name,

Art name

Regnal name

Religious name

Adult name

Posthumous name

Chosen name

Changed name

Alternate name

Appellation

Deprecated name

Avoid use

Pejorative name

Issue: Personal privacy

ULAN

Respect personal privacy, balanced with critical ability to research

ID: 500060426

Page Link: <http://vocab.getty.edu/page/ulan/500060426>

Record Type: [Person](#)

Katsushika Hokusai (Japanese printmaker, painter, 1760-1849)

Note: Noted for works of ukiyo-e ('pictures of the floating world') in painting and printmaking. He had a long career of over 70 years during which, he adopted over 30 names, typically associated with shifts in production and style. He studied Ming painting in China, the Kanō school, Sumiyoshi school, Rinpa painting, and his contemporaries of the Edo period in Japan; he also learned from Western paintings); surimono ('printed things'; smaller for eirihon (illustrated books), kyōka-shūhon (illustrated the main shunga (erotic picture) artists of the and illustrations for 500 books. Since the late including Gauguin and van Gogh.

Names:

[Katsushika Hokusai](#) ([preferred](#), [V,display](#))

[Hokusai Katsushika](#) ([V,index](#))

[Katsushika, Hokusai](#) ([V,LC](#))

[Hokusai](#) ([VCN](#))

[葛飾 北斎](#) ([V,Japanese,NA,U](#))

[Shunrō](#) ([V](#))

[Sōri](#) ([V](#))

[Kakō](#) ([V](#))

[Tatsumasa](#) ([V](#))

[Sorobeku](#) ([V](#))

[Fusenkyo](#) ([V](#))

[Gakyōjin Hokusai](#) ([V](#))

Gender: male

Birth and Death Places:

Born: [Tokyo \(Tōkyō, Japan\)](#) (inhabited p

Died: [Tokyo \(Tōkyō, Japan\)](#) (inhabited p

Events:

active: in Edo, modern-day Tokyo [Tokyo](#)

Related People or Corporate Bodies:

adopted child of [Nakajima Ise](#)

..... (Japanese mirror m

collaborated with [Takizawa Bakin](#)

..... (Japanese noveli

Issue: Personal privacy

ULAN

Respect personal privacy, balanced with critical ability to research

ID: 500195410
Anton Prinner (Hungarian sculptor, painter, 1902-1983, active in France)

Prinner, Anton

Prinner, Anna

transgender

Gender: Other

- N/A
- Official Name
- Pseudonym
- Birth Name**
- Abbreviation
- Common Name
- Full Name

- Male
- Female
- Unknown
- Other**
- N/A



Issue: Personal privacy

Respect personal privacy, balanced with critical ability to research

LIBRARY LIBRARY OF CONGRESS

Everything

Revised Report on Recording Gender in Personal Name Authority Records

PCC Ad Hoc Task Group on Recording Gender in Personal Name Authority Records

April 7, 2022

Recommendation for Personal Name Authorities

- **LOC recommends, do not include gender:**
“The primary goal of authority data is for disambiguation, not contextual biographical information”

• The primary goal of authority data is for disambiguation, not contextual biographical information

Getty Vocabs: include rich contextual information to allow research and discovery

Issue: Accessibility and inclusivity

- For Getty Vocabularies, **Accessibility & Inclusivity** would include legibility of Web site
 - Usual definition = accessibility and usability standards for physical spaces and Web design
- Expand the scope to include accessibility for various segments of our audiences
 - financial resources, levels of technical expertise
 - various cultural POV and language differences
 - use cases – catalogers, scholarly researchers, developers, interested others
 - Goals to make Getty Vocabularies available online, in release formats
 - To provide guidelines and training, tools (e.g., Open Refine), contribution methods

Document best practice

from Getty Vocabulary guidelines

E.g., Avoid
value
judgement,
unbiased,
neutral

3.4.1.5.11

Be objective

Avoid bias or critical judgment. Express all information in a neutral tone. Do not write from a subjective or biased point of view, even if your source expresses a fact in a subjective way.

- **People, events, art works**

Do not express biased views about rulers, other people, art, architecture, or events. That is, do not express views that are subjectively negative; likewise, do not express positive information in a subjective way. Instead, state views that are held by the scholarly or professional community in an objective way.

- **Controversial subjects**

When referring to a disputed or controversial matter, remain perfectly neutral, giving equal emphasis to both points of view.

- **Religious and cultural biases**

Avoid using language that expresses biased views about religion or religious groups. Do not state or imply negative or Western-centric views about native peoples.

- Avoid using terminology for that may be considered offensive by groups of people. For example, when speaking of the indigenous populations of the Americas in the scope note, do not use the term "Indian," which is offensive and also ambiguous, since it more correctly refers to the people of the subcontinent of India, but instead use the name of the tribes. If you don't know the name of the tribe or need to speak in general terms, use "Native American," "Amerindian" (where appropriate), or "First Nations" (where appropriate).



Achieving Our Goals

Getty

What Have We Learned?

- **Users:** catalogers, researchers; museum metadata and documentation community; collection and data managers, software engineers, digital humanists and data scientists
- **Structure for flexibility:** built to express complex, nuanced, and qualified information; foundational to diversify and improvement of Vocabularies
- **Documentation and research:** terminology and rich contextual information for documentation of visual arts and meaningful research and discovery
- **Growth and change:** Getty Vocabularies are forever growing and changing to meet the requirements of the field

How Do We Achieve our Goals?

Multilingual
Multicultural
Diversity
Inclusive
Equity
Unbiased
Antiracist
Accessible

- • How do we accomplish more multilingual, multicultural, and inclusive terminology and with rich, linked content?
 - unbiased terminology?
 - antiracist and correct postcolonization content?
 - content for diverse audiences?
 - inclusive and neutral content?
- • Do we avoid controversial topics, or are we leaders?
- • How do we avoid conflict between personal privacy & scholarly info?
- • Provide accessible content for inclusive audiences: scholarly, generally interested, and the technical developers?
- • Balance responsibility to current users while still remaining relevant re. technical advancement?
- Many more questions ...
- • We do not yet have all the answers – **flexibility is key**. Successful resolutions will require a process over months and years, in concert with the expert contributor and user communities.

Consult and coordinate the work of other groups

Multilingual
Multicultural
Diversity
Inclusive
Equity
Unbiased
Antiracist
Accessible

Work at the Getty:

- Getty Diversity Plan
- Reparative description efforts
- Diversity of content and collections
- Surveys re user requirements and priorities
- Getty Style Guide (e.g., diversity, inclusivity)

Related Disciplines:

- Library community
- Visual Resources comm.
- Archival community
- Museum community
- University community
- government agencies (e.g., US Dept. of Interior)
- published scholarship in art history, archaeology, anthropology, history, etc.

Experts in the Community:

- community expertise
- e.g., tribal community expertise

Moving Forward

Multilingual
Multicultural
Diversity
Inclusive
Equity
Unbiased
Antiracist
Accessible

- Facilitate use of the complexities of our data?
- Complex questions re. classification scheme and the parameters of Vocab data? E.g., intangible cultural heritage
- Will AI affect the use of our data?
- Needs of our core audiences?
- What are our priorities → well-used, relevant standards?
- Make contributing easier, while retaining accuracy and authoritativeness?

Moving Forward

- Who are our target users, from the future development perspective?
 - Contributors and consumers of the data

Considering people (not bots)

Institutional Contributors

Translators

Canon Builders

Catalogers

Developers

Digital Humanities Scholars

Multilingual
Multicultural
Diversity
Inclusive
Equity
Unbiased
Antiracist
Accessible

Thank you.

Patricia Harpring
Managing Editor
Getty Vocabulary Program

pharpring@getty.edu
vocab@getty.edu