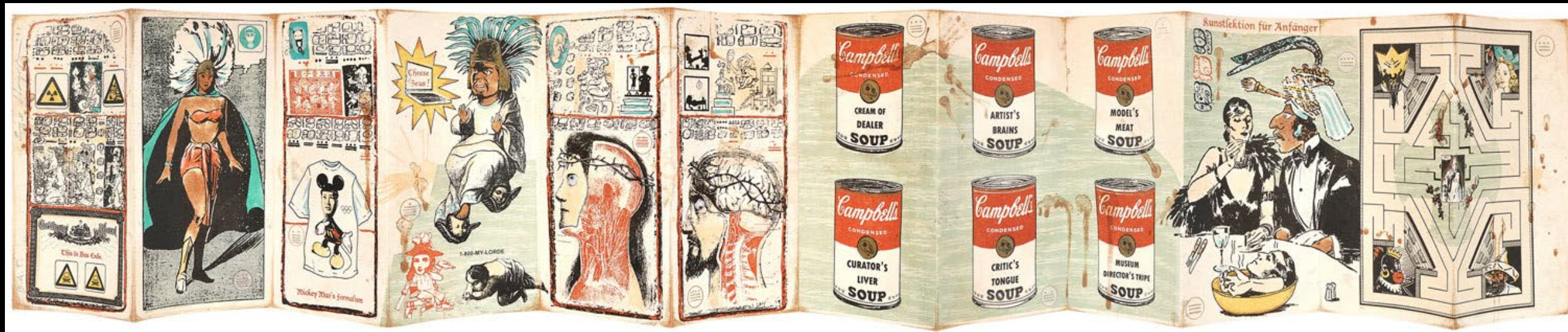


DEI & Demographic Data at the Saint Louis Art Museum



Sarah J Biggs, Collections Cataloguer,
Saint Louis Art Museum
sarah.biggs@slam.org

African American



African diaspora



Modern African



African American: Allan Rohan Crite, American 1910–2007, *Douglass Square*, oil on board, 1936. 354:1943; Elizabeth Catlett, American (active Mexico), 1915–2012, *Seated Woman*, mahogany, 1962, 75:2019; **African diaspora:** Dame Magdalene Odundo, English (born Kenya), born 1950, *Untitled, no. 5*, ceramic, 1984, 3:1993; Sir David Adhaye, English-Ghanaian (born Tanzania), born 1966, *Aswan Textile*, viscose, polyacrylic, polyester, and linen, 2015, 2:2017; **Modern African:** Elias Sime, Ethiopian, born 1968, *Untitled 4*, reclaimed electrical wires and components on panel, 2020, 43:2021; El Anatsui, Ghanaian, born 1944, *Fading Cloth*, metal bottle tops and copper wire, 2005, 10:2007

Edmonia Lewis



The Museum System - Saint Louis Art Museum - [Constituents]

File Edit View Query Report Related Tools Maintenance

Edmonia Lewis
American, 1844–1907

Living/Active Approved

Type: individual Alpha Sort: Lewis Edmonia

Title: First Name: Edmonia Middle Name:

Salutation: Position:

Institution:

Display Name: Edmonia Lewis

Begin Search Date: 1844 End Search Date: 1907 Nationality: American

Display Bio: American, 1844–1907

Documentation Addresses

Alternate Names: Mary Edmonia Lewis, Wildfire

Alternate Bios:

Historical Dates

Description	Date Range	Remarks
date of birth	7/4/1844 - 7/4/1844	source: LOC# no96049212
date of death	9/17/1907 - 9/17/1907	source: LOC# no96049212

Documentation Table:

Type	Value	Certainty	Path	Remarks
Ability and Disability	unknown	(not assigned)		
Ethnicity	African American	(not assigned)	modern North American/modern Ame...	
Ethnicity	Native American	(not assigned)	Americas, The/<styles, periods, and ...	
Ethnicity	Ojibwa	(not assigned)	<Great Lake and Central Woodland ...	
Gender	women	(not assigned)		
Languages	English (language)	(not assigned)	<temporary alphabetical list: languag...	
Nationality	American (North Ame...	(not assigned)	North American/American regions/A...	
Nationality	Native American	(not assigned)	Americas, The/<styles, periods, and ...	
Nationality	Ojibwa	(not assigned)	<Great Lake and Central Woodland ...	reportedly raised by maternal aunts i...
Race	Black people	(not assigned)		
Race	Indigenous people	(not assigned)		
Race	multiracial people	(not assigned)		mother was Ojibwa and father was Af...
Religious affiliation	Roman Catholicism	(not assigned)	Christianity/Abrahamic religions/relig...	
Role	artists (visual artists)	(not assigned)	<people in the visual arts>/<people i...	
Role	sculptors	(not assigned)	<artists by medium or work type>/arti...	
Sexual orientation	unknown	(not assigned)	<Sexual Orientation> /Constituents /A...	
Styles & Periods	Neoclassical	(not assigned)	<modern European styles and move...	

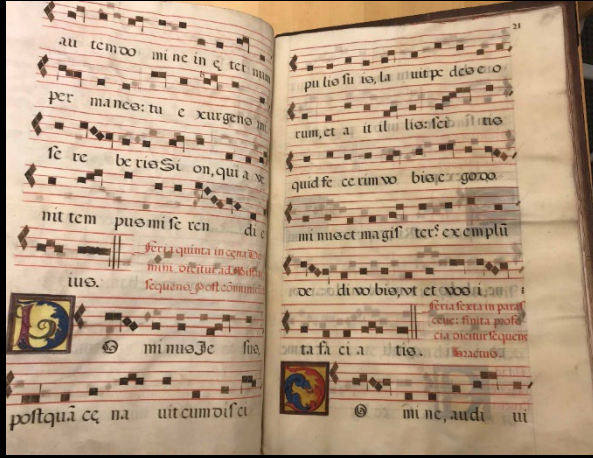
place died: London, Greater London, England, United Kingdom, Europe

place active: Boston, Suffolk county, Massachusetts, United States, North and Central America

place active: Rome, Lazio region, Italy, Europe

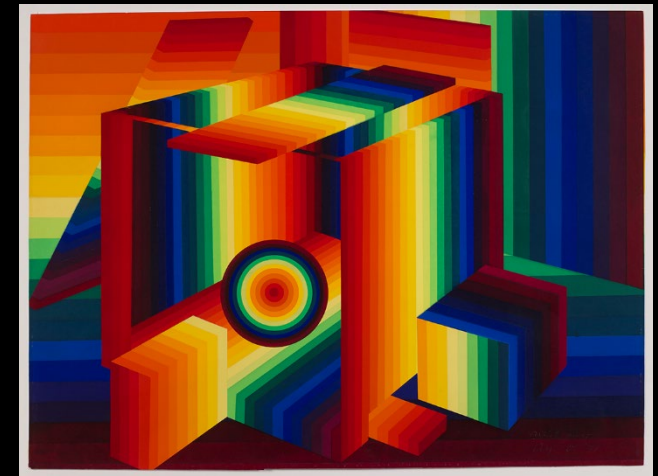
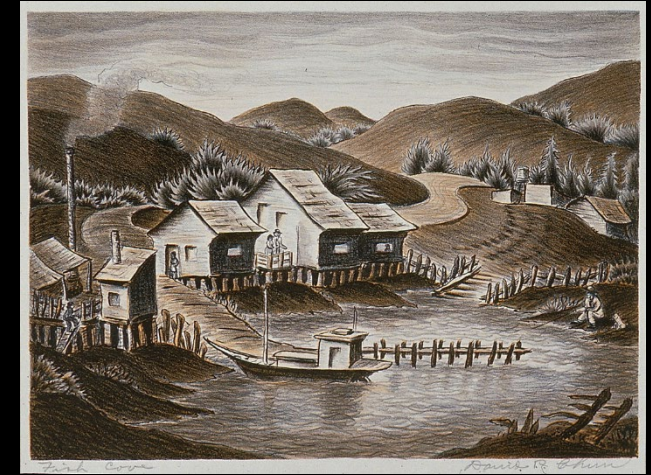
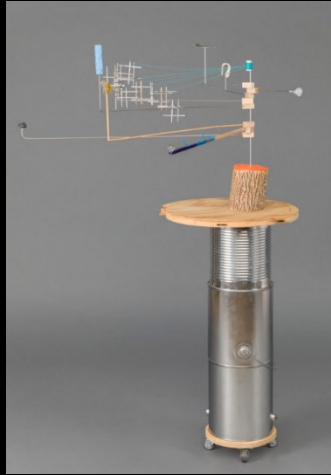
Add Edit Delete

Works by Women Artists



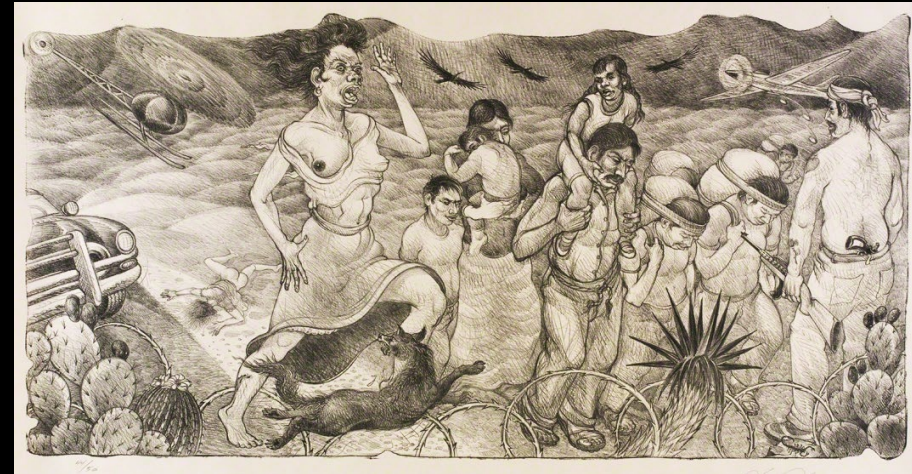
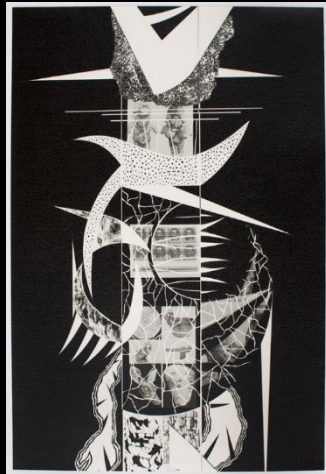
top row, left to right: Portuguese, *Opening from an Antiphonal*, tempera and ink on parchment, 16th century, 11:1930, ff.20v-21r; Elisabeth Louise Vigée-LeBrun, French, 1755–1842, *The Artist's Brother*, oil on canvas, 1773, 3:1940; Gloria Tamerr Petyarr, Anmatyer people, c.1938–2021, *Mountain Devil Lizard Dreaming*, acrylic on car door, 1993, 318:2022; Julia Hall Rice, American, 1849–1919, *Table*, walnut, 1876, 74:2019
bottom row, left to right: Elizabeth Keith, Scottish (active Japan), 1887–1956, *The Scholar*, Korea, woodblock print, 1921, 87:2021; Deborah Goldsmith, American, 1808–1936, *Family Portrait*, oil on panel, c.1832, 24:1981; Sandy Skoglund, American, born 1946, *Revenge of the Goldfish*, dye destruction print, 1981, 1745:1981; Laura Gilpin, American, 1891–1979, *The Old Saloon*, Gothic, Colorado, gelatin silver print, 1941, 107:1985

Works by Asian-American Artists



top row, left to right: Sarah Sze, American, born 1969, *Model for a Chance Encounter*, wood, stainless steel, thread, and found objects, 2014, 2:2021; Roger Shimomura, American, born 1939, *Yellow No Same, No. 9*, lithograph, 1992, 793:2020.9; David P. Chun, American, 1898–1989, *Fish Cove*, lithograph, 1935–1943, 174:1973
bottom row, left to right: Nikki S. Lee, American (born South Korea), born 1970, *The Hispanic Project (25)*, chromogenic print, 1998, 48:2001; Chiura Obata, American (born Japan), 1885–1975, *Setting Sun of Sacramento Valley*, hanging scroll: ink and color on silk, 1922, 187:2011; Ay-O, Japanese (active United States), born 1931, *From the Dictionary 4, from the series Rainbow Passes Slowly*, screenprint, 1971, 95:2000

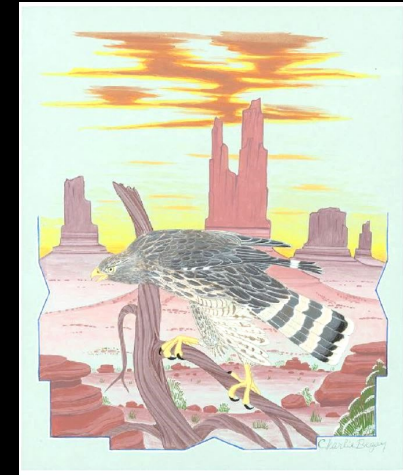
Works by LatinX Artists



top row, left to right: Enrique Chagoya, American (born Mexico), born 1953, *Road Map*, 13-color lithograph, 2003, 513:2020; Diego Rivera, Mexican, 1886–1957, *Still Life*, oil on canvas with built-up relief effects, October 1916, 386:1955; Marius de Zayas, Mexican (active United States), 1880–1961, *Mrs. Brown-Potter*, photogravure, January 1910, 147:1976.12

bottom row, left to right: María Martínez-Cañas, American (born Cuba), 1960. *Black Totem*, gelatin silver print, 1994, 160:1994; Roberto Juarez, American, born 1952, *Stuck Like Glue*, oil on canvas, 1984, 171:1995; Luis Jiménez, American, 1940–2006, *So Far from God; So Close to the United States*, lithograph, 2001, 22:2012

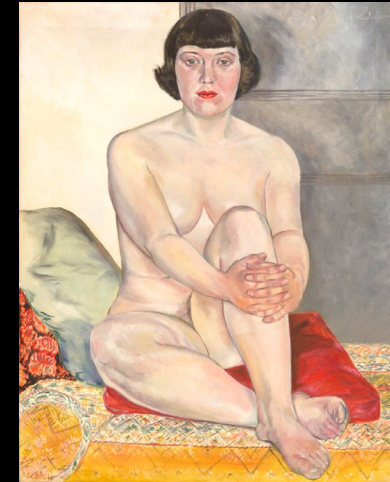
Works by Native American Veterans



top row, left to right: Vicente Mirabal (Chiu-tah), Taos Pueblo and American, 1917–1945, *Taos Pueblo and American*, 1917–1945, *Taos Turtle Dance*, watercolor, 1939, 8:1943; Beatien Yazz (Jimmy Toddy), Diné (Navajo) and American, born 1928, *The Four Way Horse*, tempera on board, 1982, 2024.177; Narciso Abeyta (Ha-So-De), Diné (Navajo) and American, 1918–1998. *Werewolf Attack on the Dead*, casein on board, 1980s, 2024.204

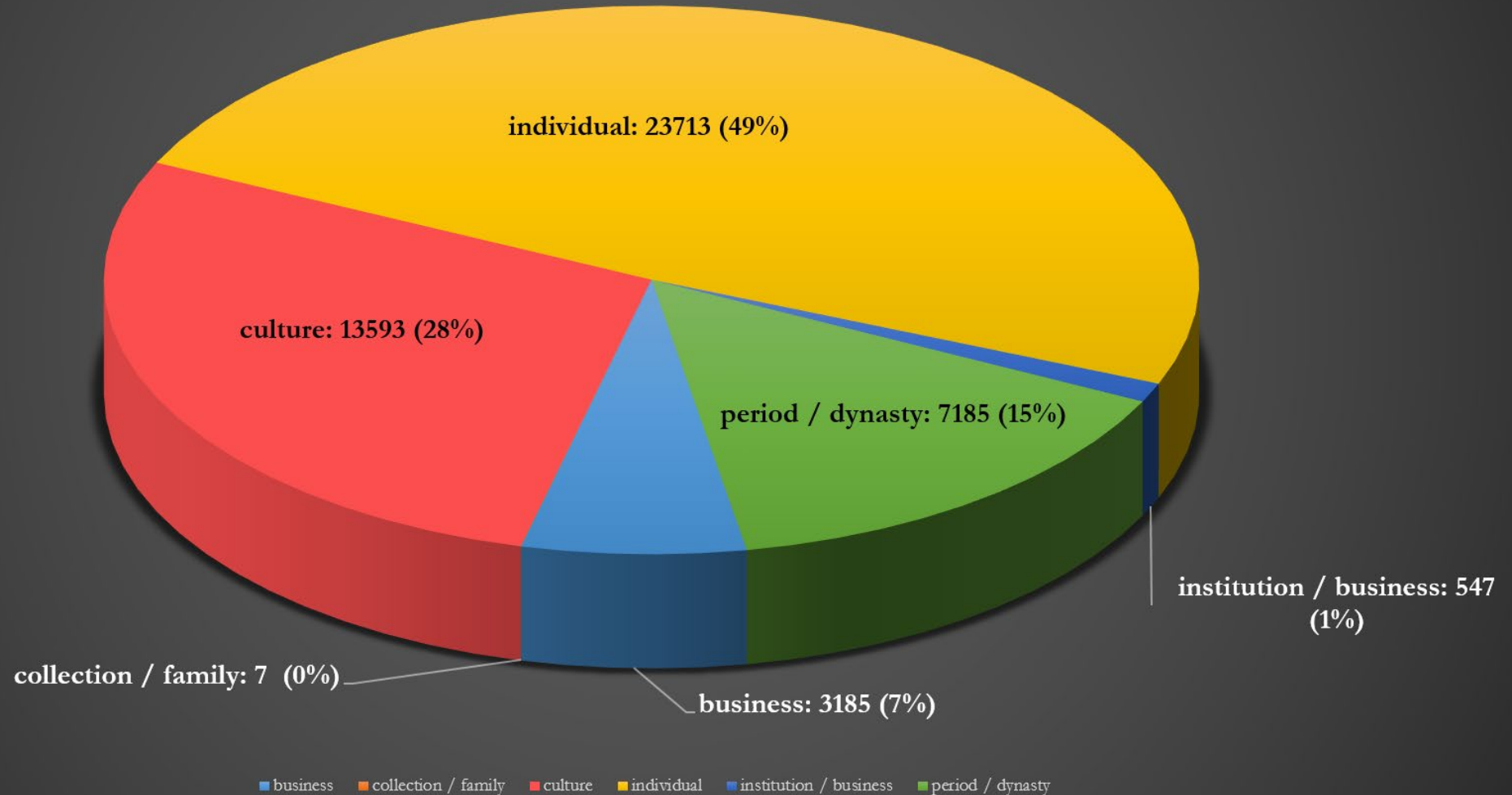
bottom row, left to right: Justino Herrera, Cochiti Pueblo and American, 1920–2006, *Zia Autumn Dance*, watercolor, late 1930s, 9:1943; Bob Haozous, Chiracahua Inde (Apache) and American, born 1943, *Untitled*, wood and acrylic, 1973, 2024.179; Charlie Begay, Diné (Navajo) and American, 1925–1973, *Untitled*, tempera on board, 1960s, E15461.22

Works by Artists with a 24 October Birthday

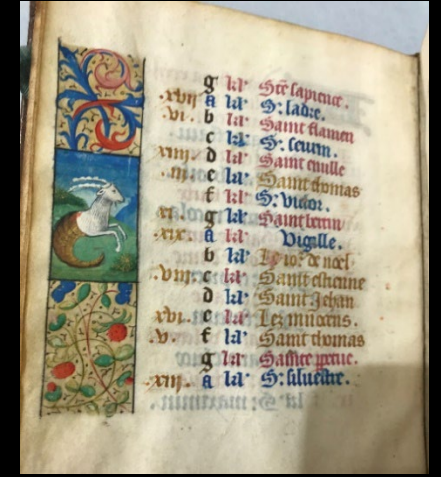
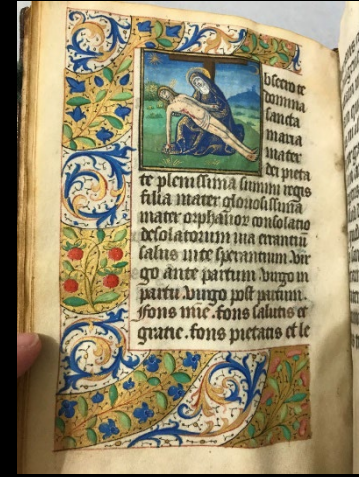


top row, left to right: Jun'ichirō Sekino, Japanese, 1914–1988, *Portrait of Onchi Kōshirō*, color multiblock print, c.1952, 749:1991; Norman Akers, citizen Osage Nation, born 1958, *Dark Reign*, lithograph, 2014, 280:2023; Lynda Benglis, American, born 1941, *Delta*, aluminum screen, bunting, plaster, sprayed zinc, 1974, 150:1984
bottom row, left to right: Pablo Picasso, Spanish, 1881–1973, *The Mother*, oil on cardboard mounted on panel, 1901, 10:1939; David Roberts, Scottish, 1796–1864, *St Paul's*, watercolor, c.1860, 35:1923; Sylvia Sleight, Welsh (active United States), 1916–2010, *Bridget Seated*, oil on canvas, 1959–60, 693:2018

Permanent Collection Objects Constituent Types



Who Were These Works Created For?



top row, left to right: Albanian, Ottoman period, 1281-1924, *Woman's Sleeveless Short Coat (pirpiri)*, silk velvet embroidered with metal thread and trimmed with metal braid and cord, 19th century, 57:1956; Yoruba artists, *Man's Robe (agbada)*, cotton, early to mid-20th century, 180:2015; French, *Miniature of the Pietà at the beginning of Obsecro Te*, 15th century, 180:1957, f. 19v; French, *Calendar page for December from a Book of Hours*, 15th century, 180:1957

bottom row, left to right: Chokwe artist, *Chief's Chair*, wood, brass, hide, 19th century, 7:1943; Waiwai artist, *Chief's Necklace*, toucan skins and cotton, c.1940, 114:1997.2; Russian, *Sticharion Type Vestment for a Boy*, c.1860, 39:1950; Yup'ik artist, *Shaman's Mask*, wood, pigment, and feathers, c.1875, 198:1980