



Indexing Art Information: Using Getty Vocabularies

Patricia Harpring
Managing Editor, Getty Vocabulary Program

revised June 2022

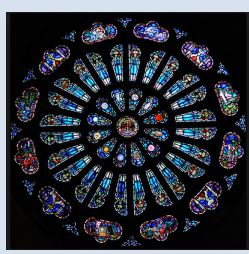
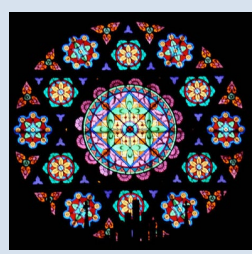
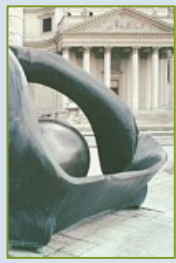


Table of Contents

- Preface 3
- What are Getty Vocabularies? 5
 - AAT 21
 - ULAN 24
 - TGN 26
 - IA 28
 - CONA 30
- Basics of Indexing 34
- Display vs. Indexing 44
- Specificity and Exhaustivity 55
 - ...Specificity 56
 - ...Exhaustivity 78
- Precoordination and Post-coordination 91
- Uncertainty and Ambiguity 96
- Knowable vs. Unknowable 117
- Indexing Subject for Access 125
- Sample Scenarios 132
- How to Find Terms in Vocabularies 136
- Indexing Exercises 140

PREFACE

- This presentation is a brief overview of the Getty Vocabularies, AAT, TGN, ULAN, CONA and IA, followed by an introduction to using the Vocabularies for indexing (i.e., assigning terms to your materials to facilitate retrieval)
- For full discussions of the Getty Vocabularies, see the vocabulary Web pages, Editorial Manuals, and other presentations on the vocabulary training page.
- <http://www.getty.edu/research/tools/vocabularies/index.html>

The screenshot shows the Getty Research Institute website. The header includes the logo, the name 'The Getty Research Institute', and navigation links for Exhibitions & Events, Special Collections, Library, Search Tools & Databases, Scholars & Projects, Publications, and About. The main content area is titled 'Search Tools & Databases' and features a sidebar with a tree view of the site's structure. The 'Training Materials' section is highlighted, containing a description of the materials and a list of links to various training documents, including 'Introduction to Controlled Vocabularies: Companion Presentation (revised 2015)' and 'Brief Overview of the Getty Vocabularies (revised 2015)'.

Explore the Getty ▼ Getty360 | Blog | Connect with Us | Shop +

The Getty Research Institute

Exhibitions & Events | Special Collections | Library | Search Tools & Databases | Scholars & Projects | Publications | About

Print

Search Tools & Databases

- Primo Search
- ▶ Getty Research Portal
- Collection Inventories & Finding Aids
- ▶ Photo Archive
- ▶ Research Guides & Bibliographies
- Digital Collections
- ▶ Article & Research Databases
- ▶ Collecting & Provenance Research
- BHA & RILA
- ▼ Getty Vocabularies
 - ▶ Art & Architecture Thesaurus (AAT) ®
 - ▶ Cultural Objects Name Authority (CONA) ®
 - ▶ Getty Thesaurus of Geographic Names (TGN) ®
 - ▶ Union List of Artist Names (ULAN) ®
 - Contribute
 - Editorial Guidelines
 - Getty Vocabularies as Linked Open Data
 - Frequently Asked Questions
 - ▶ Obtain the Getty Vocabularies
 - Training Materials

Training Materials

The documents on this page include presentations and other training materials for the Art & Architecture Thesaurus (AAT)®, the Getty Thesaurus of Geographic Names (TGN)®, the Union List of Artist Names (ULAN)®, the Cultural Objects Name Authority (CONA)®, Categories for the Description of Works of Art (CDWA), Cataloging Cultural Objects (CCO), and standards in general. These materials are subject to frequent modification and addition.

- [Getty Vocabularies and Contributing](#)
- [Getty Vocabularies and Linked Open Data](#)
- [Standards: CDWA, Standards, and Accessing Digital Materials](#)
- [International Terminology Working Group](#)

Getty Vocabularies and Contributing

Presentations describing the history, scope, and characteristics of the Getty Vocabularies and how to contribute to them. For more details on contributions, see [Contributing to the Getty Vocabularies](#). For detailed editorial rules for contributing, see the [Editorial Guidelines](#). For comprehensive information on controlled vocabularies, see [Introduction to Controlled Vocabularies](#).

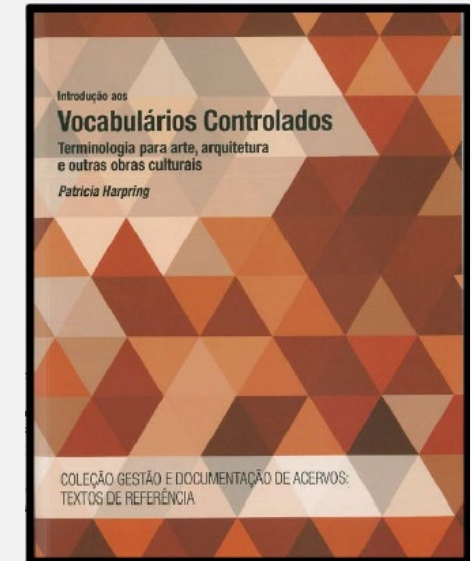
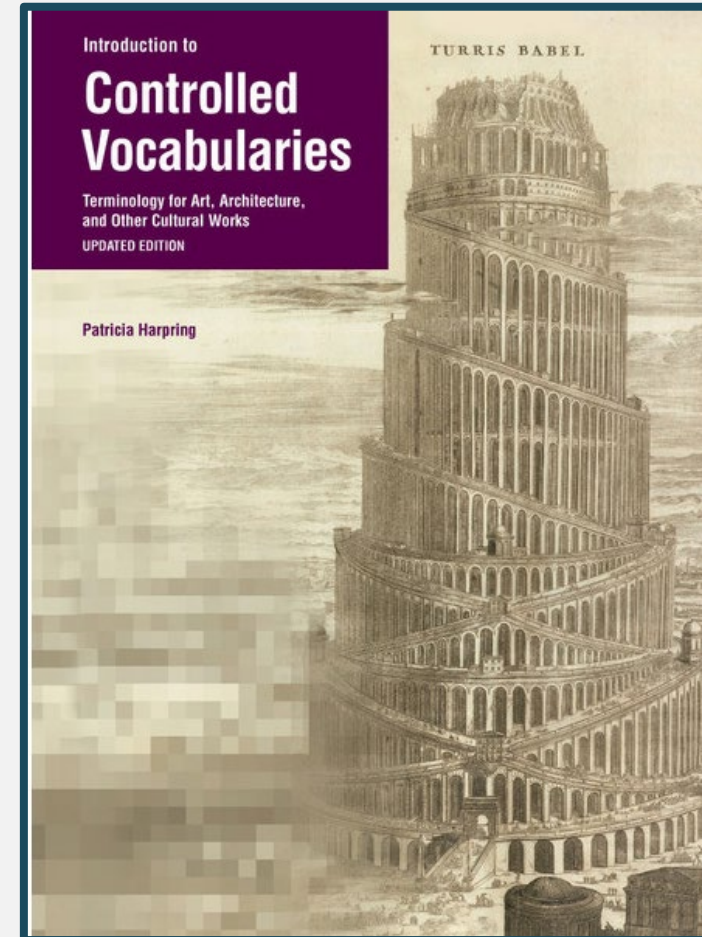
- [Introduction to Controlled Vocabularies: Companion Presentation \(revised 2015\)](#) (PDF, 7 MB, 92pp)
- [Brief Overview of the Getty Vocabularies \(revised 2015\)](#) (PDF, 4.8 MB, 68pp)
- [Multilinguality and Translating the Getty Vocabularies](#) (PDF, 6.8 MB, 109pp)
- [Contributing to the Getty Vocabularies](#) (PDF, 8.7 MB, 139pp)
- [Indexing Using the Getty Vocabularies](#) (PDF, 4.1 MB, 54pp)
- [AAT: Introduction and Overview \(revised 2015\)](#) (PDF, 8.9 MB, 223pp)
- [TGN: Introduction and Overview \(revised 2015\)](#) (PDF, 4.2 MB, 100pp)
- [ULAN: Introduction and Overview \(revised 2015\)](#) (PDF, 5.2 MB, 116pp)
- [CONA: Introduction and Overview \(revised 2015\)](#) (PDF, 13 MB, 236pp)
- [Developing Authorities Workshop](#) (PDF, 13 MB, 332pp)
- [CONA and Subject Access \(revised 2015\)](#) (PDF, 4.6 MB, 113pp)
- [Glossary and Bibliography for Vocabularies](#) (PDF, 219 KB, 47pp)
- [Getty Vocabulary Program: Overview of Our Work](#) (PDF, 2.4 MB, 44pp)

PREFACE

- For basic information on vocabularies, see *Introduction to Controlled Vocabularies* (Harpring, Baca editor, revised 2013) and its bibliography
- Translated in Portuguese

Patricia Harpring
Series edited by Murtha Baca

This primer on the characteristics, scope, uses, and methods for building and maintaining controlled vocabularies for art and cultural materials explains how vocabularies should be integrated in cataloging systems; utilized for indexing and retrieval; and structured to group synonyms and arrange concepts into categories.



What Are the Getty Vocabularies?

stained glass

pot-metal glass

rose window

Catherine wheel



lancets

Medieval

Gothic

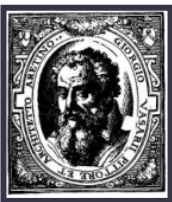
tracery

bar tracery

- Getty Vocabularies gather related terms, other information, and links to improve access to information about art and other cultural heritage materials
- Used for indexing, retrieval, knowledge bases

Getty Vocabularies

Enabling digital art history



- **AAT**, *Art & Architecture Thesaurus*® includes generic terms in several languages, relationships, sources, and scope notes for agents, work types, roles, materials, styles, cultures, and techniques (e.g., *amphora*, *oil paint*, *olieverf*, *peintures à l'huile*, *acetolysis*, 玉器, *Jadekünste*, *sintering*, *orthographic drawings*, *Olmeca*, *Rinascimento*, *Buddhism*, *watercolors*, *asa-no-ha-toji*)
- **TGN**, *Getty Thesaurus of Geographic Names*® includes names, relationships, and coordinates, with special focus on historical information for current cities, historical nations, empires, archaeological sites, lost settlements, and physical features as necessary for cataloging art; not GIS but may include coreferences to GIS and maps (e.g., *Diospolis*, *Acalán*, *Ottoman Empire*, *Mogao*, *Ch'ien-fu-tung*, *Ganges River*, गंगा नदी)
- **ULAN**, *Union List of Artist Names*® includes names, relationships, notes, sources, and biographical information for artists, architects, firms, studios, repositories, patrons, and other individuals and corporate bodies, both named and anonymous; may include coreferences to other resources for same entity (e.g., *Mark Rothko*, *Cai Xiang*, 蔡襄, *Crevole Master*, *Riza Abbasi*, *Altobelli & Molins*, *Rajaraja Museum*)
- **IA**, *Getty Iconography Authority*™ includes proper names, relationships, and dates for iconographical narratives, religious or fictional characters, historical events, names of literary works and performing art; special focus on non-Western with coreferences to other resources including Iconclass for Western (e.g., *Viaggio dei Re Magi*, *Flood of Deucalion*, *French Revolution*, *Olouaipipilele*, *Xibalba*, *Niflheim*, शिव, *Shiva*, *Bouddha couché*)
- **CONA**, *Cultural Objects Name Authority*® focuses on architecture, multiples, and works depicted in other works; includes titles, artist attribution, creation dates, relationships, and location for works whether extant or destroyed (new contribution: 70,000 works from BWR) (e.g., *Chayasomesvara Temple*, *Hagia Sofia*, *Αγία Σοφία*, *The Lacemaker*, *La Dentellière*, *Merlettaia*, *Lion Throne Room*, 神奈川沖浪, *Great Wave*, *Die große Welle*,)

What Are the Getty Vocabularies?

- The Getty Vocabularies contain structured terminology for art, architecture, decorative arts, archival materials, visual surrogates, art conservation, and bibliographic materials.
- They represent over 40 years of continuing international collaborative scholarship
- From their inception, the Getty Vocabularies were designed to be linkable to each other and to the broader realm of cultural heritage information
- With the release of the Getty Vocabularies as Linked Open Data (LOD), the Getty became a leader in advancing the possibilities of technology to enable research and discovery of information about art, architecture, conservation, and other cultural heritage
- The Getty Vocabularies are entering a new world of seemingly limitless possibilities in digital scholarship

What Are the Getty Vocabularies?

- In a global environment where we strive to be more open and equitable, while maintaining high standards for scholarship and research, Getty Vocabularies can be tools to facilitate such goals for art history and related disciplines
- Longstanding goals of the Getty Vocabulary Program are to make AAT, TGN, ULAN, CONA, and IA ever more multilingual, multicultural, and inclusive, focusing also on diversity, equity, unbiased and antiracist terminology, and accessibility

Features of the Getty Vocabularies

- **Structured, linked vocabularies:** [AAT](#), [TGN](#), [ULAN](#), [CONA](#), [IA](#)
- **Relationships:** Thesauri, 3 relationships: equivalence (synonyms), hierarchical (broader-narrower), associative (btwn records, not hierarchical)
- **Standards-compliant:** Comply with standards for controlled vocabularies (ISO, NISO)
- **Authoritative:** Vocabularies cite authoritative sources and contributors; but not authoritarian (may use variant terms)
- **Scope:** Getty Vocabularies strive to be ever more multilingual, multicultural, and inclusive, within scope of visual arts
- **Target Domain:** Traditional audience (art and architecture domains: visual resources, catalogers, museums), plus scholars, and related disciplines (archaeology, conservation)
- **Collaborative:** Grow through contributions from expert user community: institutions, consortia, and projects

Features of the Getty Vocabularies

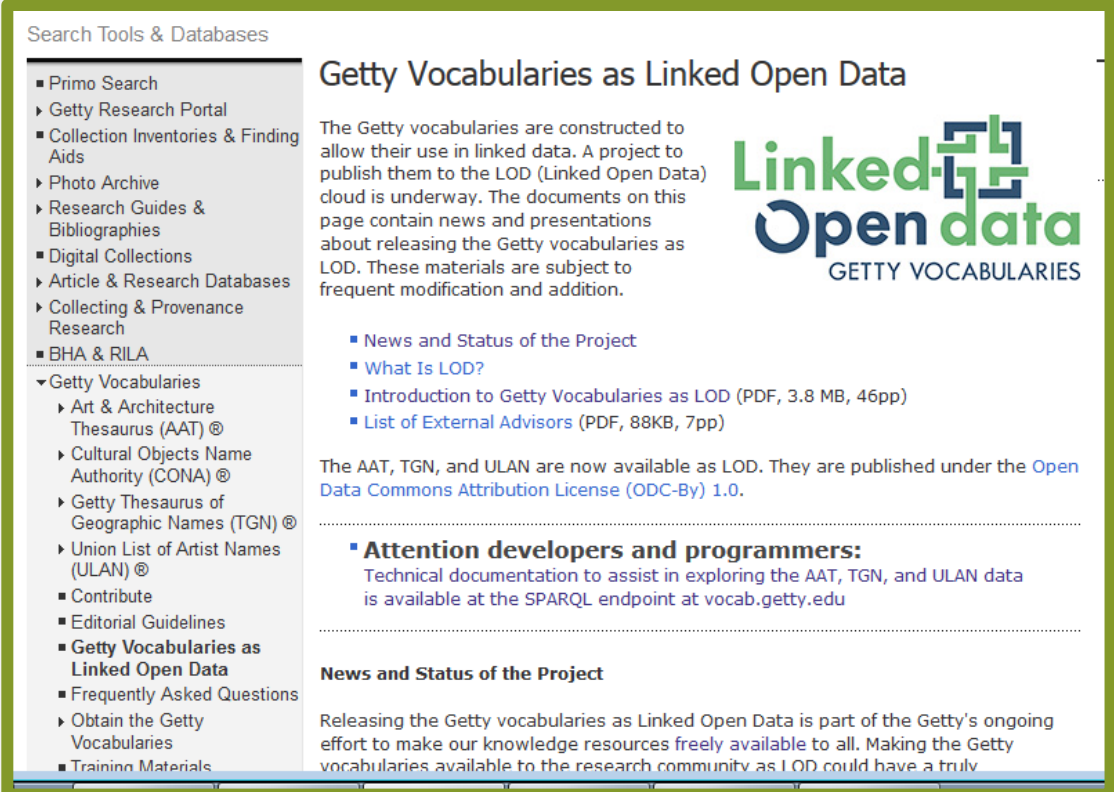
- **Coreferences**: They contain coreferences to other resources where topics overlap (e.g., ULAN <http://vocab.getty.edu/page/ulan/500337743> = LOC <https://lcn.loc.gov/nr2002038798>)
- **How unique**: Getty Vocabularies are unique in their global coverage of the defined domain of visual arts, in citing published sources and contributors, in allowing interconnections among historical and current information, in accommodating the sometimes debated and ambiguous nature of art historical information, and in allowing complex relationships within and between Vocabularies
- **Rich knowledge bases**: They are not simple 'value vocabularies' or authorities; they are rich 'knowledge bases' in themselves, intended for research and discovery
- **Minimum vs rich**: Although each Vocabulary requires a small set of minimum data, the data model allows for rich data that may be exploited for research and discovery
- **Multicultural**: Getty Vocabularies strive to be ever more multilingual, multicultural, and inclusive

Accessing the Getty Vocabularies

- History of the Getty Vocabularies
 - The AAT, ULAN, and TGN were begun in the mid-1980s
 - To meet the needs of the art museum, visual resources, archives, and art library communities
 - Authoritative vocabularies to aid in the indexing and retrieval of art information
 - CONA development began in 2004; IA development was part of CONA
 - AAT, ULAN, TGN, CONA, and IA have same core data structure and same core editorial rules
 - Vocabulary Program and Getty Digital technical team provide instruction for use of and contribution to the Getty Vocabularies at conferences and in online training materials

Accessing the Getty Vocabularies

- Compiled, merged, edited, and published by the Getty Vocabulary Program and Getty Digital technical team; refreshed every two weeks
- **Open Data Commons Attribution License (ODC-By) v1.0**
- More open license, allows sharing, creation, adaptation of data with attribution
- **Data is made available in various ways:** via online searching; Web services APIs; relational tables and XML format annual releases
- **Linked Open Data:** structured and published to make it openly accessible and shareable on the Semantic Web



The screenshot shows a website page with a navigation menu on the left and main content on the right. The navigation menu includes 'Search Tools & Databases' with sub-items like 'Primo Search', 'Getty Research Portal', 'Collection Inventories & Finding Aids', 'Photo Archive', 'Research Guides & Bibliographies', 'Digital Collections', 'Article & Research Databases', 'Collecting & Provenance Research', and 'BHA & RILA'. Below this is a section for 'Getty Vocabularies' with sub-items: 'Art & Architecture Thesaurus (AAT) ©', 'Cultural Objects Name Authority (CONA) ©', 'Getty Thesaurus of Geographic Names (TGN) ©', and 'Union List of Artist Names (ULAN) ©'. There are also links for 'Contribute', 'Editorial Guidelines', 'Getty Vocabularies as Linked Open Data', 'Frequently Asked Questions', 'Obtain the Getty Vocabularies', and 'Training Materials'.

The main content area is titled 'Getty Vocabularies as Linked Open Data'. It contains a paragraph explaining that the vocabularies are constructed to allow use in linked data and are published under the Open Data Commons Attribution License (ODC-By) 1.0. To the right of this text is the 'Linked Open Data GETTY VOCABULARIES' logo. Below the paragraph is a list of links: 'News and Status of the Project', 'What Is LOD?', 'Introduction to Getty Vocabularies as LOD (PDF, 3.8 MB, 46pp)', and 'List of External Advisors (PDF, 88KB, 7pp)'. Further down, there is a section titled 'Attention developers and programmers:' with a link to technical documentation at vocab.getty.edu. At the bottom, there is a section titled 'News and Status of the Project' with a paragraph about releasing the vocabularies as Linked Open Data.

Accessing the the Getty Vocabularies

- Getty Vocabularies are **thesauri** compliant with national (NISO) and international (ISO) standards for thesaurus construction
- They are compliant with / map to other standards:
 - CDWA (Categories for the Description of Works of Art)
 - CCO (Cataloging Cultural Objects)
 - VRA Core (Visual Resources Association core categories)
 - LIDO (Lightweight Information Describing Objects)
 - CIDOC CRM (CIDOC Conceptual Reference Model) (ISO 21127:2006)
 - etc.

What Are Controlled Vocabularies?

- A controlled vocabulary is an organized arrangement of words and phrases
- Typically includes preferred and variant terms
- Has a defined scope or describes a specific domain

Purpose of Controlled Vocabularies

- To provide terminology to catalog and retrieve information
 - To capture the richness of variant terms
 - For some users, to promote consistency in assignment of the same terms to similar content
 - For some users, in retrieval, to utilize variants, broader/narrower contexts, and other rich data and links
 - For other users, as a resource for researching variant names and rich contextual information

Controlled Vocabularies vs. Controlled Format

- **Controlled vocabularies** are organized sets of controlled terminology values (often with other information as well)
 - **Controlled format** refers to rules concerning the allowable data types and formatting of information
-
- Fields may have controlled format in addition to being linked to controlled vocabulary
 - Or the controlled format may exist in the absence of any finite controlled list of acceptable values

Controlled Vocabularies vs. Controlled Format

Controlled format

- May govern the expression of Unicode or other characters in either a free-text field or in a field that is linked to a controlled vocabulary
- Also for fields where numbers or codes are used
- E.g., recording measurements, geographic coordinates
- May regulate the number of digits allowed, the expression of decimals and negative numbers, etc.,
- *Ideally in compliance with ISO, NISO, or another appropriate standard*

Controlled Vocabularies vs. Controlled Format

Which fields here are controlled format,
which use controlled vocabulary?

display

Materials/Techniques Description: egg-tempera paint with tooled gold-leaf halos on panel

indexing
with
controlled
terms

Role: medium Material Name: egg tempera | gold leaf

Role: support Material Name: wood panel

AAT

Technique Name: painting | gold tooling

display

Dimensions Description: comprises 10 panels; overall: 280 x 215 x 17 cm
(110 1/4 x 84 5/8 x 6 3/4)

indexing
with
controlled
format

Extent: components Value: 10 Type: count

Value: 280 Unit: cm Type: height

Value: 215 Unit: cm Type: width

Value: 17 Unit: cm Type: depth

Types of Controlled Vocabularies

- Most controlled vocabularies in art indexing are structured vocabularies
 - Structured vocabulary = emphasizes relationships
-

Relationships in General

- Connections between terms and between concepts
Are a rose window and a Catherine wheel the same thing?
How is pot-metal glass related to the more general term stained glass?
- Between **equivalents** (synonyms)
- Other relationships = **hierarchical** and **associative** (links that organize concepts and provide context)

Types of Controlled Vocabularies

The most common types of controlled vocabularies used for art and architecture information

- subject heading lists
- simple controlled lists
- synonym ring lists
- taxonomies
- Thesauri
- The Getty Vocabularies are thesauri

What Is a Thesaurus?

- Thesaurus: A semantic network of unique concepts
- Thesauri may be monolingual or multilingual
- Thesauri may have the following three relationships:
 - Equivalence Relationships
 - Hierarchical Relationships
 - Associative Relationships



stirrup cups
coaching glasses
hunting glasses



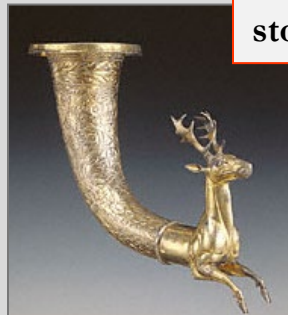
sturzbechers
Sturzbecher
stortebeckers

associative

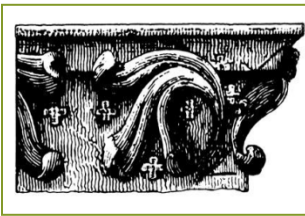
Objects Facet *hierarchical*
 Furnishings and Equipment
 Containers
 <culinary containers>
 <vessels for serving / consuming food>
 rhyta

distinguished from

equivalence
 rhyta
 rhyton
 rhytons
 rhea
 rheon
 rheons
 ritón



amfoor
amphorae
arc-boutant
brittleness
Buddhism
calligraphy
emulsifier
façades
flying buttress
飛扶壁
lithographer
litógrafos
luchtbogen
orthogonal plan
Macedonian
millwork
Rinascimento
ῥυτόν
stupa
Sturzbecher
travertine
weft wrapping
yastiks
zeppelin
Zigula
zinc oxide



AAT, the Art & Architecture Thesaurus®

The AAT is a thesaurus containing generic terms, dates, relationships, sources, and notes for work types, roles, materials, styles, cultures, techniques, and other concepts related to art, architecture, conservation, other cultural heritage

- Generic terms, not proper names
oil paint, olieverf, acetolysis, sintering, orthographic drawings, Olmeca, Rinascimento, Buddhism, watercolors, asa-no-ha-toji, sralais
- AAT is multilingual; large translation projects are underway
- Conceptually organized from terms to describe abstract concepts to generic terms for concrete, physical artifacts
- Facets are the upper levels of the AAT structure
- AAT is not organized by subject matter or discipline





Sample record

ID: 300132869

Terms:

bobbin lace (pref, en)

bone lace (en)

cushion lace (en)

梭心蕾絲 (zh)

線軸編織花邊 (zh)

kloskant (nl)

dentelle aux fuseaux (fr)

encaje de bolillos (es)

encaje de bolillo (es)

Klöpplspitze (de)

Klöpplspitzen (de)

Associative Relationships

requires ... lace pillows (<textile fabricating tools and equipment>...Objects Facet) [300132869]

Hierarchical Relationships (poly)

.Objects Facet

... Visual & Verbal Communication

..... Visual Works

..... visual works (works)

..... <visual works by material >

..... needlework (visual works)

..... lace (needlework)

..... bobbin lace

Note: With "needle lace," one of two primary types of handmade lace. It is characterized by being made by ...

Chinese (traditional) 與「針織蕾絲 (needle lace)」同為主要的手工蕾絲, 其特色是以纏繞於線軸或梭心...

Dutch Een van de twee belangrijkste soorten met de hand vervaardigde kant; 'naaldkant' is ...

German Zusammen mit der "Nadelspitze" eine der wichtigsten...

Spanish Junto a "encaje a aguja", uno de los dos tipos principales de ...

Contributors: VP,CHIN,AS,RKD,lFM-SMB-PK,CDPB-DIBAM

Sources: Earnshaw, Claburn, Needleworker's Dictionary (1976); Identification of Lace, 2d ed. (1984); Ginsburg, Illustrated History of Textiles (1991)

Contributors are cited

AAT records are merged information from multiple contributors

Getty Vocabularies grow through contributions from the expert user community

All information in a Getty Vocabulary record is attributed to a contributor and cites the published sources

Getty

bobbin lace ([preferred](#), [C,U,LC,English-P,D,U,PN](#))
bone lace ([C,U,English,UF,U,N](#))
cushion lace ([C,U,English,UF,U,N](#))
lace, bobbin ([C,U,English,UF,U,N](#))
pillow lace ([C,U,English,UF,U,N](#))
梭心蕾絲 ([C,U,Chinese \(traditional\)-P,D,U,U](#))
線軸編織花邊 ([C,U,Chinese \(traditional\),UF,U,U](#))
骨架花邊 ([C,U,Chinese \(traditional\),UF,U,U](#))
枕墊花邊 ([C,U,Chinese \(traditional\),UF,U,U](#))
suō xīn lěi sī ([C,U,Chinese \(transliterated Hanyu\)](#))
suo xin lei si ([C,U,Chinese \(transliterated Pinyin\)](#))
so hsin lei ssu ([C,U,Chinese \(transliterated Wade\)](#))
kloskant ([C,U,Dutch-P,D,U,U](#))
dentelle aux fuseaux ([C,U,French-P,D,U,PN](#))
merletto a tombolo ([C,U,Italian-P,D,U,PN](#))
encaje de bolillos ([C,U,Spanish-P,D,U,PN](#))
encaje de bolillo ([C,U,Spanish,AD,U,SN](#))
Klöppelspitze ([C,U,German,AD,U,SN](#))
Klöppelspitzen ([C,U,German-P,D,U,PN](#))

- **Getty Conservation Institute** (Los Angeles, California)
- **Academia Sinica** (Nankang, Taiwan)
- **Netherlands Institute for Art History** (RKD: Bureau AAT) (The Hague, The Netherlands)
- **Centro de Documentación de Bienes Patrimoniales** (Dirección de Bibliotecas, Archivos y Museos) (Santiago, Chile)
- **Staatliche Museen zu Berlin Preussischer Kulturbesitz** (Berlin, Germany)
- *[Canadian Heritage Information Network (CHIN) (Gatineau, Quebec, Canada), Istituto Centrale per il Catalogo e la Documentazione (Rome, Italy)(ICCD)] and other contributors of partial translations; future translations in French, Italian, Portuguese, other languages*

Achilles Painter

Abasi, Riza

رضا عباسی

An Qi

安岐

Bartolo di Fredi

Galleria degli Uffizi

Gilbert & George

Katsushika Hokusai

Kicking Bear

Master of Boi

Méraud, Pierre-Antoine,
père

Ngapatari, Hakaraia

O'Keeffe, Georgia

Pei, I. M.

Rothko, Mark

Sa'īd, Mahmūd

Skidmore, Owings &
Merrill

unknown Mende

Vikramaditya I

Wren, Christopher

Zeuxiades

Ζευξιάδης



ULAN, the Union List of Artist Names®

ULAN contains names, relationships, notes, sources, and biographical information for artists, architects, firms, studios, repositories, patrons, sitters, and other individuals and corporate bodies, both named and anonymous

- Named people and corporate bodies
Bartolo di Fredi, Xueshi Bai, 白雪石, National Palace Museum (Taipei)
- Anonymous creators known by appellation: *Santa Eufemia Master*
- Scope also includes “Non-Artists” (e.g., sitters and patrons)
- “Unknown People by Culture” (e.g., *unknown Aztec*)
- “Unidentified Named People” (e.g., known from archival documents)

- ULAN includes current and historical associative relationships (e.g., students to teachers; firm and studios to members)
- Contributions to ULAN are from experts at authorized institutions (e.g., museums, special collections, art libraries, cataloging projects, bibliographic projects, etc.)



ULAN, the Union List of Artist Names®

Sample record

ID: 500060426

Names:

- Hokusai, Katsushika (pref,en,ja-trans,de)
- Katsushika Hokusai (en,ja-trans)
- Hokusai (en,ja-trans)
- 葛飾 北齋 (ja)
- Shunrō (en,ja-trans)
- Tawaraya Sōri (en,ja-trans)
- Kakō (en,ja-trans)
- Tatsumasa (en,ja-trans)
- Gakyōjin (en,ja-trans)
- Taito (en,ja-trans)
- lichi (en,ja-trans)
- Manji (en,ja-trans)
- Tokitarō (en,ja-trans)
- 時太郎 (ja)
- 葛飾北齋 (ja)

Nationalities:

Japanese (pref)

Roles:

AAT

- artist
- printmaker
- painter
- designer
- calligrapher
- draftsman
- landscapist
- marine artist
- figure artist
- ukiyo-e artist

Gender: male

Birth and Death Places:

Born: Tokyo (Kanto, Japan) (inhab place)
 Died: Tokyo (Kanto, Japan) (inhab place)

AAT

TGN

Events:

active: Tokyo (Kanto, Japan) (inhab place)
 in Edo, modern-day Tokyo

Associative Relationships:

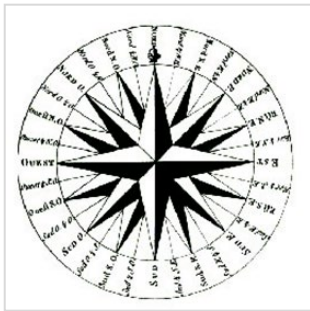
teacher of Taito, Katsushika, II
(Japanese printmaker, active ca. 1820-1850)
 child of Nakajima Ise
(Japanese mirror maker, 18th century)
 possibly identified with ... Tōshūsai Sharaku
 (Japanese printmaker, active 1794-1795)

Contributors:

VP,Avery,GRL,BHA,CCA

Sources: Bowie, Drawings of Hokusai (1964);
 Grove Dictionary of Art online (1999-2002); Library
 of Congress Authorities database (n.d.);
 Metropolitan Museum of Art [online] (2003-);
 Bouquillard, Hokusai: First Manga Master (2007)

Abthugni
Angel Falls
Athínai
Αθήναι
Bhārat
Býćí Skála
Bora-Bora
Casablanca
Chichén Itzá
Cueva Cerro Sota
Donner Pass
Dos Cabezas Site
Firenze
Fort Rouillé
Gdansk
Genna Bogai, Arcu
Святой Престол
Jabal Mayyah
Kush
Luxor
מישׂראל
Mare Cantabricum
Nan Madol Ruins
Rapa Nui
臺北



TGN, the Getty Thesaurus of Geographic Names®

TGN focuses on places relevant to art, architecture, and related disciplines, recording names, relationships, place types, dates, notes, and coordinates for current and historical cities, nations, empires, archaeological sites, lost settlements, and physical features

- Places relevant to art history
Thebes, Diospolis, Ottoman Empire, Mogao Caves, Ch'ien-fu-tung, Ganges
- TGN is a structured vocabulary
- TGN is a thesaurus compliant with ISO standards
- Focus on historical regions, archaeological sites, lost settlements, built upon a skeleton of the modern world from NGA/NIMA and USGS data sets
- TGN is not GIS, is a thesaurus focused on names and links. Why invent the wheel over again? Many sources of geographic data exist. However, TGN may be linked to GIS, maps, and other geographic resources



TGN, the Getty Thesaurus of Geographic Names®

Sample record

[Linked to other vocabularies](#)

<p>ID: 7011179</p>	<p>Hierarchical Rels. (polyhier.)</p>	<p>Place Types</p>
<p>Names:</p>	<p>World (facet) .. Europe (continent) ... Italy (nation) Tuscany (region) Siena (province) Siena (inhabited place)</p>	<p>inhabited place settled by Etruscans (flourished by 6th century BCE) city archiepiscopal see commune (administrative) since 1125 cultural center university center world heritage site</p>
<p>Siena (it,en,es,fr,nl,de) Σιένα (el) Siyenah 锡耶纳 (zh) シエーナ (ja) Sienese (en-adj) Sienna (h-en) Sena Julia (h-la) Sanna (h) Saena (h)</p>	<p>World (facet) .. Europe (continent) ... Italian Peninsula (peninsula) Etruria (former confederation) Siena (inhabited place) Historical: Late Etruscan</p>	<p><i>Lat:</i> 43 19 07 N (43.3180) <i>Long:</i> 011 19 50 E (11.3300) <i>Elevation:</i> 1056.430 feet (322.0000 meters)</p>
	<p>Associative Rels ally of Pisa ..(inhabited place) [7006082] Ghibelline allies, 13th-14th centuries</p>	<p>Note: Siena was founded as an Etruscan hill town; later was the Roman city of Sena Julia (3rd century BCE). It flourished under the Lombard kings (6th century CE) and was Medieval self-governing commune ...</p>
	<p><i>Contributors:</i> BHA, FDA, GRLPSC, VP <i>Sources:</i> Annuario Generale (1980); Canby, Historic Places (2007) 2/861; Dizionario Corografico Toscana (1977) 1508; Library of Congress Subject Headings (2002-); Milanese, Storia dell'Arte Senese (1969) passim; NGA/NIMA database (2003-) -129709; TCI: Toscana (1984) 479 ff; Times Atlas of the World (1992) 183; UNESCO World Heritage Centre [online] (1992-) accessed 20 July 2010; Webster's Geographical Dictionary (2007) 1114</p>	

AAT

Adorazione dei Magi
Apedemak
Baby Jaguar
Death and the Miser
Ehecatl
Ganesh
Hades
Hercules
Herakles
Mithras
Niflheim
Noli me tangere
Olouaipilele
Prajnaparamita
Penance of Indra
Reclining Buddha
Bouddha couché
涅槃仏
Storming the Bastille
The Divine Comedy
Tumatauenga
Virgin Hodegetria
World War I
Xibalba



IA, the Getty Iconography Authority TM

IA is a thesaurus that covers topics relevant to art, architecture, and related disciplines; includes multilingual proper names, relationships, and dates for iconographical narratives, religious or fictional characters, themes, historical events, and named literary works and performing arts

- Includes the proper names of subjects not covered by other Getty Vocabularies
- Scope is multicultural and multilingual, grows through contributions
- Includes links to other sources where there is overlap, such as Iconclass and US Library of Congress subject authorities
- The IA is compliant with the Subject Authority of CDWA and CCO (*Categories for the description of Works of Art and Cataloging Cultural Objects*)
- The IA has a thesaural structure; it includes equivalence, associative, and hierarchical relationships
- The IA is linked to the other Getty Vocabularies



IA, the Getty Iconography Authority TM

Sample record

ID: 1000085

Names:

Avalokiteshvara

Avalokiteśvara

अवलोकितेश्वर

ཐུན་རས་གཟིགས་

Spyan ras gzigs

AAT links

role/characteristic is ... bodhisattva

symbolic attribute is ... lotus

culture/religion is ... Mahayana (Buddhism)

culture/religion is ... Theravada (Buddhism)

AAT
TGN
ULAN
CONA

Associative Relationships

associated with Krishna (Hindu iconography)

counterpart is Guanyin (Buddhist iconography)

Note The bodhisattva of infinite compassion and mercy; embodies the compassion of all Buddhas. This bodhisattva is portrayed in different cultures as either female or male...

Hierarchical Relationships

Top of the IA hierarchies

Legend, Religion, Mythology

Buddhist iconography

Buddhist characters

Avalokiteshvara (Buddhist iconography)

Contributors & sources

[VP] Encyclopedia Britannica Online

(2002-); Bowker, Oxford Dictionary

of World Religions (1997);

Huntington, Art of Ancient India

(1985); **LC:** LC control no.: sh

85010492

Names in multiple languages

Users may choose the name appropriate for their needs



Bhimesvara Temple
Bradshaw rock
paintings

Case Study House 21
Château de Versailles
Empire State Building

En liberté comme toi

Himeji Castle

姫路城

Irises

Kashmir Gate

Mona Lisa

La Gioconda

Model for the Façade
of San Lorenzo

MS Ludwig XV

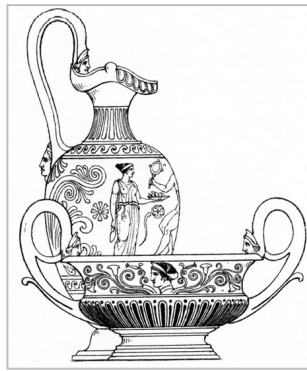
Pantheon

Portrait of Napoleon

Ronda di notte

Square Ting Vessel
of Duke Kang

西周早期 康侯方鼎



CONA, the Cultural Objects Name Authority®

CONA compiles titles/names and other metadata for works of art, architecture, and other cultural works, current and historical, documented as items or in groups, whether works are extant, destroyed, or never built

- In development, may be used to record works depicted in visual surrogates and for other purposes
- CONA compiles titles, attributions, depicted subjects, and other metadata about works of art, architecture, and cultural heritage, both extant and historical works, works never built, disassembled works, conceptual works for multiples
Hagia Sophia, Mona Lisa, Thirty-six Views of Mount Fuji, 富嶽三十六景
- Scope is multicultural and multilingual; grows through contributions
- CONA is linked to images; CONA is linked to the AAT, TGN, ULAN, and IA
- Through this rich metadata and links, CONA may provide a powerful conduit for research and discovery for digital art history



CONA, the Cultural Objects Name Authority®

Sample record

ID: 700001950

Titles:

Shiva met de maan in het haar (nl)

Shiva with the Moon in his Hair (en)

Catalog Level: item

Work Types:

sculpture (visual work) **AAT**

Classifications:

sculpture (preferred)

Creation Date: 1000/1200

Creator Display:

anoniem

sculptor: unknown Chola **ULAN**

Locations: **ULAN**

TGN

Current: Rijksmuseum (Amsterdam, North Holland, Netherlands) AK-MAK-1291; RM001.collect.910; Bruikleen van de Vereniging van Vrienden der Aziatische Kunst

Creation: Tamil Nādu (India)

Materials: bronze founding **AAT**

Dimensions: 40 cm (height) x 24cm (width) x 10.5 (depth)

Events: exhibition: Metamorfoze/Geheugenproject Willem Witsen **AAT**

Cultures:

Indian Chola **AAT**

General Subject:

human figure(s) (preferred)

religion and mythology

Specific Subjects:

Shivá (Hindu iconography)

mudrā (pose, <visual and representational concepts>)

[link to Iconclass]

AAT
TGN
ULAN
CONA
CONA IA

Contributors & Sources: [Rijksmuseum;VP]; Rijksmuseum XML file



CONA, the Cultural Objects Name Authority®

Sample record

ID: 700000141

Titles/Names:

Hagia Sophia
(en,de,nl)

Ayasofya (tr)

Αγία Σοφία (el)

Agia Sofia

Haghia Sophia

Sainte-Sophie (fr)

Santa Sofía (es)

Santa Sofia (it)

Sancta Sophia (la)

Sancta Sapientia (la)

Holy Wisdom (en)

Saint Sophia (en)

聖蘇菲亞大教堂 (zh)

Work Types: church; mosque;
museum

AAT

Date: original structure dated
from 4th century CE; present
structure built 532-537 CE; rebuilt
in 12th century

ULAN

Creators: Anthemios of Tralles
(Byzantine architect, ca. 474-ca.
534) and Isidoros of Meletus, the
Elder (Byzantine architect, active
mid-6th century);

Patron: Justinian I (Byzantine
emperor, ca. 482-565)

Built Work

... Hagia Sophia

Associative Relationship

depicted in *View of the Hagia
Sophia in Constantinople*; Eduard
Hildebrandt; watercolor; ca. 1852;
Hermitage Museum (Saint
Petersburg, Russia) [700008345]

Location: İstanbul (Marmara, Turkey)

Address Note: 41.008548°N; 28.979938°E

TGN

Materials: system bearing masonry,
centralized plan; interior surfaces are
sheathed with polychrome marble,
porphyry, and mosaics

AAT

Dimensions: central dome: diameter 31 m
(102 feet); height 56 m (184 feet)

General Subject: architecture

Specific Subject: Holy Wisdom
Religion/Mythology)

AAT

TGN

ULAN

CONA

CONA IA

Note: Domed basilica was con
by the Emperor Justinian; built in
Constantinople in 6th century...

Contributors: Avery, BHA, FDA, VP

Sources: Fleming, *Penguin Dictionary of
Architecture* (1999); Herrin, Judith,
Byzantium (2007); Maidstone, *Hagia Sophia*
(2002); Theoharidou, *Architecture of Hagia
Sophia* (1988); Xydis, *Chancel Barrier of
Hagia Sophia* (1947)

Works depicted in visual surrogates

- What is advantage to linking to CONA for work depicted?
- Access for all surrogates for same work
- Multilingual access, links, etc.



Surrogate in Photo Archive

Velázquez et al copy in the Uffizi after Ruben

LINKS

specific subject



Enough information in surrogate records to make minimal record for work depicted

CONA_ID: 700008694 Class.: paintings
 Titles: Equestrian Portrait of Philip IV
 Filippo IV, re di Spagna
 Felipe IV a caballo

Work Types: painting (visual work) **AAT**
 Creation Date: ca. 1645
 Creator Display: Diego Velázquez and assistants;
 after Peter Paul Rubens, now lost
 Locations: Galleria degli Uffizi (Florence, Tuscany, Italy) [500125191] **ULAN**
 Repository Numbers: 1890:792 **ULAN** **TGN**
 Address Note: Room 41: Rubens **ULAN**
 Display Materials: oil on canvas **AAT**
 Dimensions: 338 x 267 cm **AAT**
 General Subject: portraits
 Specific Subjects:

equestrian portrait [300403976] **AAT**
 Philip IV, King of Spain (Spanish king, 1605-1665) [500282775] **ULAN**

Related Works:
 pastiche copy after Equestrian Portrait of Philip IV [700008695] painting (visual work); Peter Paul Rubens; now lost; 1628-1629

Sources and Contributors:
 [VP] [GRIPA] **CONA**
 Fossi, Uffizi Gallery (2001)
 GRI Photo Archives database (1974-)

Getting Started: Basics of Indexing

Use controlled terms or controlled format for indexing

How to Index: Key Points

- Display fields, descriptive notes, and other text fields are not access points for retrieval; they are free-text note fields
- Therefore, if a cataloger mentions important information in such a note, in order to facilitate retrieval, it must be indexed in the appropriate controlled fields elsewhere in the record
- Use controlled terminology (such as AAT, TGN, ULAN, IA, CONA)
- or another controlled vocabulary such as Iconclass or Library of Congress Authorities
- For some fields, controlled lists or controlled format is appropriate

Use the most specific term appropriate

How to Index: Key Points

- When indexing, use the most specific term or value applicable to the field
- But the most specific value must be warranted by available source information
- Follow rules for dealing with ambiguous or uncertain information
- Keep in mind if the field displays to end users or if it is hidden, used only for retrieval
- Rules differ for fields that do not display

Include information only if known

How to Index: Key Points

- Catalogers should include information only when known
- Assign terms with appropriate specificity, based upon available information
- However, to not record a specific term, for example Work Type, if documentation does not support it
- If you are not certain of a specific work type, use a term about which you are certain
- Catalogers should not guess or make assumptions unless they have authoritative documentation

Thesaural structure

- Top of the AAT hierarchies
- Objects Facet
- Visual and Verbal Communication (hierarchy name)
- Visual Works (hierarchy name)
- visual works (works)
- <visual works by material or technique>
- photographs
- <photographs by form>
- <photographs by form: format>
- card photographs (photographs)
- boudoir midget mounts
- boudoir photographs
- cabinet photographs
- **cartes-de-visite (card photographs)**
- imperial photographs
- panel photographs
- promenade photographs
- victoria cards (photographs)
- gem photographs
- lantern slides

- Sub-facets (called "hierarchies") establish the context of the term
- Guide terms in angled brackets

Work type: carte-de-visite

CONA
Titles:
Author:
Creation Date: 1890

Description:
Album:
O. Sch
Work
Gener

Key
Form
Still
Cov
Cair
ID/A
200
Is P
Ken
See
Coll
Use
Digi
Pers
http



ed 105 mm. x 63 mm. Positive Process:
on verso, stating he is the successor to
o on verso.

ction

be suitable for most purposes.

Thesaural structure

- Indexers may choose the term that best describes the work
- The concept and each term are identified by unique numeric IDs
- e.g., singular for a single item, language
- Some systems or local cataloging rules do not allow linking at the term level

AAT subject_id 300127141

Work type: carte-de-visite

cartes-de-visite (card photographs) (preferred, C,U,English,P,D,U,PN)
(fotografische kaarten) (Dutch-P,D,U,PN)
(photographies) (French-P,D,U,PN)
carte-de-visite (card photograph) (C,U,English,AD,U,SN)
(Dutch,AD,U,U)
cartes de visite (card photographs) (C,U,English,UF,U,N)
card photographs (cartes-de-visite) (C,U,English,UF,U,N)
carte-de-visite photographs (C,U,LC,English,UF,U,N)
cartes de visite photographs (C,U,English,UF,U,N)
sure cards (C,U,English,UF,U,N)
Visitenkartenporträts (fotografische Abzüge) (C,U,German-P,D,U,PN)
Visitenkartenporträt (fotografischer Abzug) (C,U,German-P,D,U,PN)
tarjetas de visita (obra visual) (C,U,Spanish-P,D,U,PN)
tarjeta de visita (obra visual) (C,U,Spanish,AD,U,SN)

term_id 1000127141

term_id 1000299275

term_id 1000271610

term_id 1000271607

term_id 1000271609

term_id 1000271613

term_id 1000606079

term_id 1000606080

term_id 1000438273

term_id 1000438274



Thesaural structure

- Ideally, choose the term within the record that best indexes the object at hand, e.g., singular for a single item
- Some systems or local cataloging rules do not allow linking at the term level

cartes-de-visite (card photographs) (preferred, C,U,English-P,D,U,PN)

(fotografische kaarten) (Dutch-P,D,U,PN)

(photographies) (French-P,D,U,PN)

carte-de-visite (card photograph) (C,U,English,AD,U,SN)

(Dutch,AD,U,U)

cartes de visite (card photographs) (C,U,English,UF,U,N)

card photographs (cartes-de-visite) (C,U,English,UF,U,N)

carte-de-visite photographs (C,U,LC,English,UF,U,N)

cartes de visite photographs (C,U,English,UF,U,N)

sure cards (C,U,English,UF,U,N)

Visitenkartenporträts (fotografische Abzüge) (C,U,German,D,PN)

Visitenkartenporträt (fotografischer Abzug) (C,U,German-P,AD,SN)

tarjetas de visita (obra visual) (C,U,Spanish-P,D,U,PN)

tarjeta de visita (obra visual) (C,U,Spanish,AD,U,SN)

CONA ID: 700008890

Titles: [Young boy seated on a chair], 1890

Author: [G. ...]

Creator: [G. ...]

Designer: [G. ...]

Album: [G. ...]

School: [G. ...]

Work: [G. ...]

General Subjects: portrait

K...

F...

S...

C...

C...

II...

20...

Is...

K...

S...

C...

U...

D...

P...

ht...

Work type: **carte-de-visite**

ive Process:
cessor to O.



Required fields

Include Required “Core” Information

- Certain fields are required for every work record
- Include information for all of the core fields
- Based on CDWA/CCO, the categories and subcategories that are indicated as core
- Core = those elements that the international expert task force, representing various related disciplines, agreed were necessary
- to uniquely and unambiguously identify and describe a particular work of art or architecture, or group of works, and to allow research

Required fields

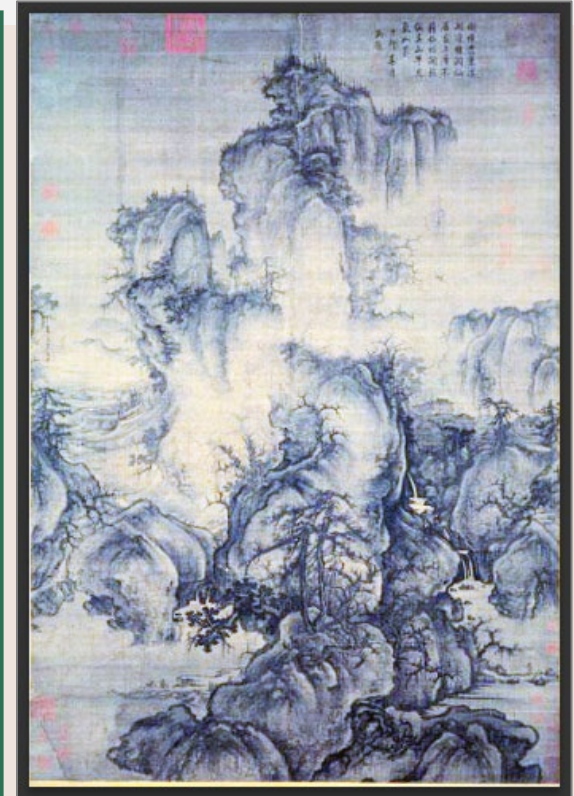
- Example from CONA, an implementation of CDWA/CCO
- For these elements, always include data when cataloging
- Index display data
- In this example, the record is in CONA; if the data is in another system, include a unique ID if possible *
 - include repository ID/number too, if any

What is a minimum record?

Core elements

[ID]
Catalog Level
Classification
Work Type
Title
Creator
Creation Date
Subject
Current Location
Dimensions
Materials & Techniques

[CONA ID 70000285]*
Catalog Level item
Classification paintings
Work Type painting (visual work)
scroll (information artifact)
Title Scene of Early Spring
宋郭熙早春圖 軸
Creator Guo Xi (Chinese painter, 1023 - ca.1085 CE)
Creation Date 1072 CE
General Subject landscapes
Specific | spring (season) | trees | Pinus (genus) | streams
Current Location National Palace Museum (Taipei, Taiwan) **Repository Number** 000053N000000000
Dimensions 158.3 x 108.1 cm
Mat & Tech painted scroll **Index** ink | silk | paper



Required fields: Also include optional fields when important

Creation numbers

- Optional, but important if known
- E.g., Repository numbers
- E.g., Include numbers or names associated with creation, such as serial numbers and model numbers; distinguished from state and edition

Catalog level: item Classification: musical instruments Work Type: guitar
Title: Archtop Guitar
Creator: James D'Aquisto (American, New York 1935–1995 Corona, California)
Date: 1993 Culture: American
Material: spruce, maple, ebony
Dimensions: W. 17 in.Chordophone-Lute-plucked-fretted
Location: Greenport (New York, United States) Type: creation
Current Location: Metropolitan Museum of Art (New York, New York) Accession Number: 2012.246 Credit Line: Gift of Steve Miller, 2012

Current Location: Metropolitan Museum of Art
(New York, New York, USA)

Repository Number: 2012.246

Creation Numbers: model: Centura Deluxe;
serial number: 1249



Display vs. Indexing

What Is Information for Display?

- Art information databases should include information intended for display and information that is **indexed** using controlled vocabularies to facilitate efficient retrieval
- Information for display should be in a format and with syntax that is easily read and understood by users, includes appropriate nuance and ambiguity
- Display fields may be free-texts or concatenated from controlled, fielded data
- Display fields may contain all the nuances of language necessary to relay the uncertainty and ambiguity that are common in art information

What Is Indexed Information?

- Certain key elements of art information must be formatted (e.g., years for dates) or linked to vocabularies (e.g., AAT, TGN, ULAN, IA) to facilitate retrieval
- **Indexing** in this sense should be a conscious activity performed by knowledgeable catalogers
- Consider the retrieval implications of indexing terms
- Do not use an automated method that simply parses every word in a text intended for display into indexes

Controlled Vocabularies vs. Controlled Format

- **Controlled vocabularies** are organized sets of controlled terminology values (often with other information as well)
 - Links to Getty Vocabularies; links to controlled lists
- **Controlled format** refers to rules concerning the allowable data types and formatting of information
 - Fields may have controlled format in addition to being linked to controlled vocabulary
 - Or the controlled format may exist in the absence of any finite controlled list of acceptable values

Example of indexed information

Cat. Level: item Classification ceremonial objects

Work Type bi

Title Disc (Bi)

Dimensions Display:

diameter: 8 1/4 inches (21 cm)

index: value: 21 unit: centimeter type: diameter

controlled format

controlled term from pick list

Mat & Tech Display:

jade (nephrite)

index:

jade (rock) **[AAT 300011119]**

nephrite **[AAT 300011120]**

controlled term linked to Getty vocabulary

- Display vs indexing
- Display for the end-user, indexing for access, using controlled vocabularies
- Indexing is important for access
- Display allows expression of uncertainty or ambiguity in a note for end-user
- Or Display may be concatenated from controlled values



Controlled vocabulary: Controlled list or link to AAT?

- **Controlled list:** benefit = shorter list, higher accuracy for catalogers choosing terms
- Controlled list may be linked to AAT through behind-the-scenes mapping
- **Link to AAT:** A direct link to AAT provides cataloger with full AAT, useful when the number of possible terms is very large

Cat. Level: item Classification ceremonial object
Work Type bi
Title Disc (Bi)

Dimensions Display: controlled list

diameter: 8 1/4 inches
indexing: value: 21

Dimensions:			
Display Dimensions: 8 1/4 inches (21 cm)			
Value	Unit	Type	External
21	centimeters	diameter	
		circumference	
		count	
		diameter	'''
		length	

Mat & Tech Dis
jade (nephrite)
indexing:

controlled term linked to Getty vocabulary

jade (rock) [AAT 300011119]
nephrite [AAT 300011120]

Materials:	
Display Materials: jade (nephrite)	
Term	AAT ID
jade (rock) (metamorphic rock, rock, inorg)	300011119
nephrite (tremolite, mineral, inorganic mate)	300011120



Which fields here are controlled format, which use controlled vocabulary?

display
indexing
with
controlled
terms

Materials/Techniques Display: egg-tempera paint with tooled gold-leaf halos on panel

Role: medium **Material Name:** egg tempera | gold leaf

Role: support **Material Name:** wood panel

AAT

Technique Name: painting | gold tooling

display
indexing
with
controlled
format

Dimensions Display: comprises 10 panels; overall: 280 x 215 x 17 cm (110 1/4 x 84 5/8 x 6 3/4)

Extent: components **Value:** 10 **Type:** count

Value: 280 **Unit:** cm **Type:** height

Value: 215 **Unit:** cm **Type:** width

Value: 17 **Unit:** cm **Type:** depth

Which vocabularies are used to index a work record

Cat. level: item

Classification: prints and drawings

Work Type: **•drawing •rendering** AAT

Title: Bulto

Creator Display: rendered by Eldora P. Lorenzini (American, 1910-1993)

Index: **Eldora P. Lorenzini** (American, 1910-1993) ULAN

Role: rendered

Materials display: watercolor, pen, and ink on paper

Index: **•watercolor •pen •ink •graphite •laid paper** AAT

Dimensions: overall: 55.9 x 40.2 cm (22 x 15 13/16 in.)

Value: 55.9 Unit: cm Type: height Value: 40.2 Unit: cm Type: width

Creation Date: 1938 Start: 1938 End: 1938

Current Location: **National Gallery of Art (Washington, DC, USA)** ULAN

Repository number: 1943.8.16638

Creation Location: **Santa Fe (New Mexico, USA)** TGN

General Subject: **•another work •religion & mythology**

Specific Subject:

•Bulto, Andrés Garcia CONA

•sculpture •figures •bulto •farming •plow •oxen AAT

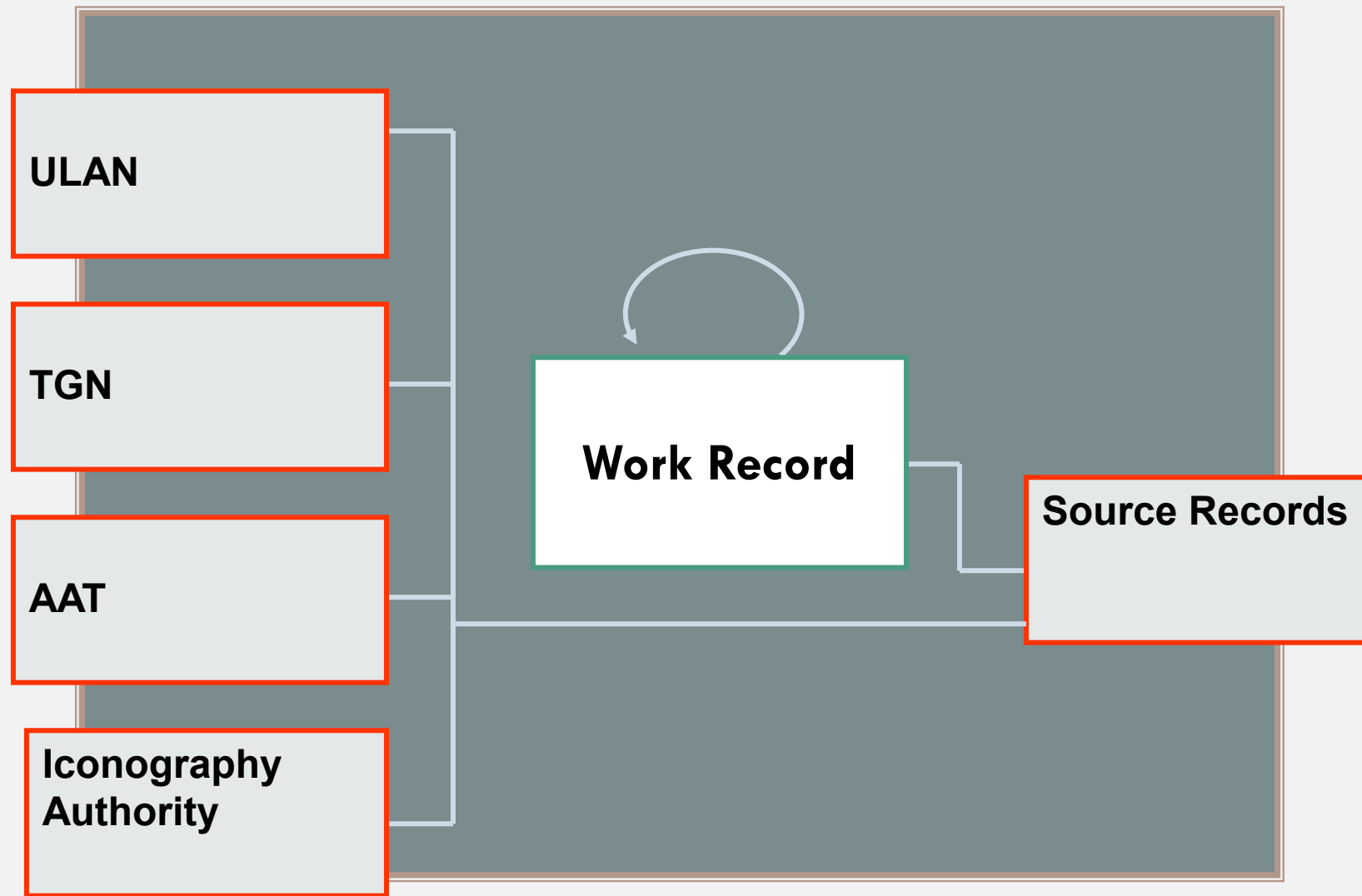
•St. Isadore IA



CONA 700008612

Indexing Using the Getty Vocabularies

Simplified entity-relationship diagram for a work record & vocabularies



Issues for Indexing

- Indexing fields are intended for retrieval
- The following are examples of indexing fields:
 - Any field that contains a controlled number (e.g., Start Date) or values controlled by pick lists (e.g., Preferred / Non-preferred flag), controlled files (e.g., bibliographic sources), or links to controlled vocabularies (e.g., Location is linked to TGN)
- Consider retrieval issues when you assign terms and values to such fields
- Indexing fields may be visible or hidden from end users
- If the indexing field is visible to end users, do not use overly broad estimations that will be confusing or misleading

Issues for Indexing

Applying vocabularies

- Factors to consider in assigning indexing terms
 - specificity
 - exhaustivity
 - pre-coordination vs post-coordination

Specificity and Exhaustivity

Specificity

- **Specificity** refers to the degree of precision or granularity used (e.g., *campanile* rather *tower*)
- However, catalogers should use terms only as specific as warranted by authoritative sources
- With all indexing, it is better to be accurate and broad rather than incorrect and specific

- How precise are your indexing terms?
- “temples” or “wats”
- “photographs” or “daguerreotypes”
- Collection size
- Collection focus
- Expertise of cataloguers
- Expertise of users

Specificity

Materials and Techniques

- Free-text Materials and Techniques display and index using controlled terminology (AAT)
- Simple matching for display to AAT terms

Catalog Level: Item Classification: paintings

Work Type: miniature

Title: Sarah Anne Allen

Da **Display Mat & Tech:** watercolor on ivory

Cre

180

Dir **Mat & Tech Indexing [AAT]:**

Ma watercolor [AAT 300078925]

Pro

Em ivory [AAT 300011857]

193

Lo

Massachusetts); 36.351

Credit Line: Gift of Miss Emily L. Clark



Specificity

Catalog Level item
Classification paintings
Work Type panel painting | altarpiece
Title Adoration of the Magi
Adorazione dei Magi (repository title)
Creator Bartolo di Fredi (Sienese painter, active by 1353, died 1410)
Creation Date ca. 1385; some scholars date it after 1395
General Subject religion and mythology | allegory
| human figures
Specific | Adoration of the Magi | Siena | horses | camels | Magi | Holy Family | Journey of the Magi | gold | frankincense | myrrh | king | deity | death
Current Location Pinacoteca Nazionale di Siena (Siena, Italy);
Repository No no. 104
Measurements 195 x 158 cm (76 x 61 5/8 inches)
Mat & Tech tempera on panel
Mat & Tech Index:
tempera
panel

Contributors BHA VP CD PNS GRI-PA
Sources Pinacoteca Nazionale di Siena (2002-); Boucher and Fiorini, Magi Reconstructed (2012); Cole, Sienese Painting (1985); Freuler, Bartolo di Fredi (1994); Harpring, Bartolo di Fredi (1992)

- Index only to level of specificity known
- What if your source information does not indicate the type of tempera?



Specificity

AAT

Hierarchy

<paint by composition or origin>

water-base paint

tempera

casein paint

egg-oil tempera

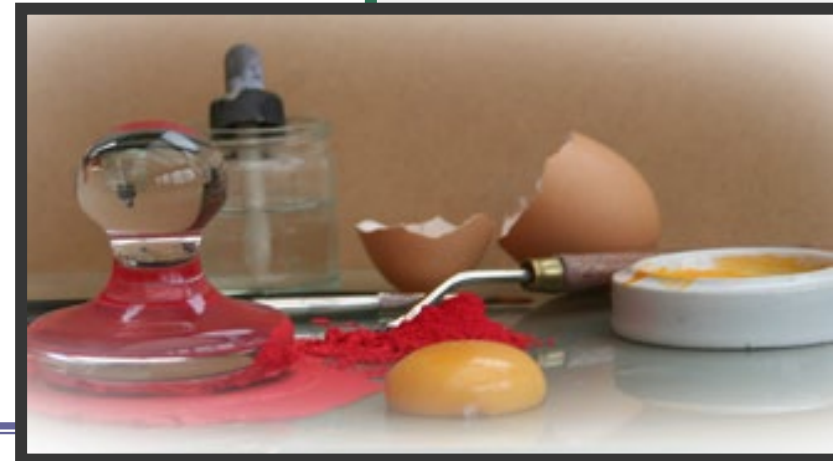
egg tempera

gum tempera

oil tempera

- You may link to the general “tempera”

- Perhaps “egg tempera” more accurately describes the medium; use only if documentation supports it



Scope Note for egg tempera:

Tempera paint using egg as its vehicle, traditionally the yolk only, in other cases, the whole egg.

Specificity

- You may index technique or implements separately from materials

Materials and Techniques: Role, flag

Catalog Level: item Classification: architecture

Work Type: church

Title: North Christian Church Preference: preferred

Creator Description: designed by Eero Saarinen (American, 1910-1961);
posthumously, construction was supervised by firm of Eero Saarinen &
Associates (American architectural firm, 1950-1961)

Current Location: Columbus (Indiana, United States)

Mat & Tech Display: hexagonal plan, concrete base,
leaded copper spire, slate roof; welded steel
buttresses support the roof and spire at the
6 axial corners

AAT

Mat & Tech: steel *Flag:* material

Mat & Tech: concrete *Flag:* material

Mat & Tech: slate *Flag:* material

Mat & Tech: hexagonal plan *Flag:* technique

Mat & Tech: buttressing *Flag:* technique



Specificity

- You may further index the support separately from media using a Role

Materials and Techniques: Role, flag

Classification: graphic arts
Work Type: drawing, preparatory study
Title: Man in Korean Costume
Creator: artist: Peter Paul Rubens (1577-1640, active in Flanders and Italy)
Creation Date: ca. 1617-1618
Current Location: J. Paul Getty Museum (Los Angeles, CA). Rep. No.: 83.B.384

Mat & Tech: Display: black chalk with touches of red chalk in the face on ivory laid paper

Mat & Tech [AAT]: ■ chalk

Role: medium *Flag:* material

Mat & Tech [AAT]: ■ laid paper

Role: support *Flag:* material



Specificity

Classification = broad Work Type = specific

Classification

- Classification categorizes a work in a broader scheme
- May vary depending upon the organization of the collection
- Classification is controlled by an extensible list
- For movable works provided by the repository

Catalog level: item

Classification decorative arts [Class ID 20425]

Classification

decorative arts [Class ID 20425]

furniture [Class ID 20635]

Work Type: rolltop desk [AAT 300121499]

Creation Date ca. 1765

General Subject furnishings

Current Location J. Paul Getty Museum (Los Angeles, California) ID: 72.DA.47

Dimensions 66 1/4 x 61 3/8 x 35 3/16 inches

Mat & Tech: veneered with mahogany, with gilt bronze mounts
| mahogany | veneer



Specificity

Classification = broad Work Type = specific

- Work type should indicate what the work is, with the greatest specificity warranted by sources

Work Type

Catalog level: item ▪ *Class:* ▪ photographs ▪ American art
Work Type ▪ gelatin silver print
▪ **Title:* Panoramic Photograph of the White House, Washington, D.C.
▪ **Creator Display:* Haines Photography Co. (American photography, 19th century)
▪ **Role:* photographers
▪ *[link]:* Haines Photography Co.

Classification

- photographs
- American art

Work Type

- gelatin silver print



Specificity

Classification = broad Work Type = specific

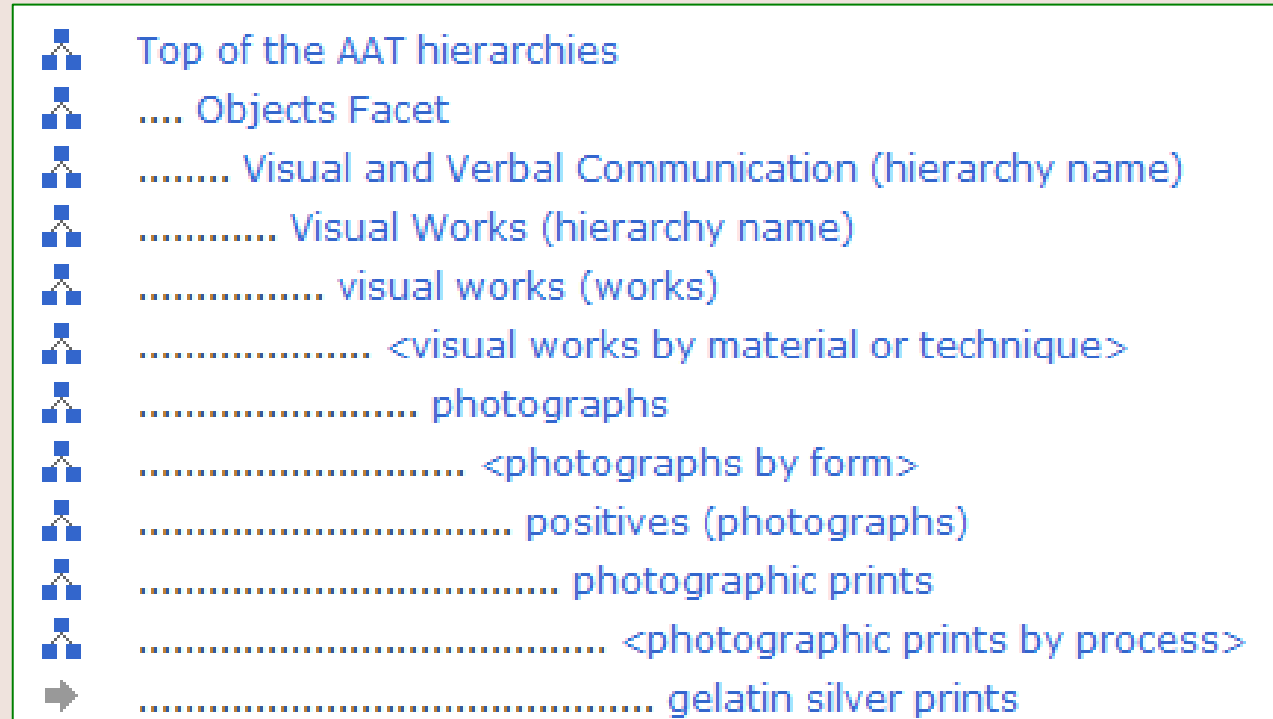
Work Type and Classification

Classification controlled, extensible list

21381	machines
21382	vehicles / transportation
21391	minerals / rocks
21431	needlework / sewing
21465	numismatics / philately
21485	natural history
21667	paintings
21668	performance art / installations
21669	personal accessories
21670	photographs
21672	prints

- Classification is drawn from an extensible list, mapped behind the scenes to one or more AAT terms
- Work Type is drawn directly from the full AAT, primarily terms in the Objects facet

Work Type is drawn from full AAT



Specificity

Work Type: Homographs

keys (hardware)

keys (sound device components)

keys (texts)

- Be sure to link to the correct concept
- Beware of homographs
- Homographs are distinguished by hierarchical placement and other information, an in AAT by “qualifier” which is stored in separate field from term



London Key Map Symbols			
M4	Motorway		Postal District Boundary
A4	Primary Route		Main Railway Station
A40	'A' Road		Other Railway Station
	'B' Road		London Underground Station
	Other Road		Docklands Light Rail Station
	Toll		Bus/Coach Station
	Street Market		Car Park

Specificity

Link to the term appropriate for indexing;
singular or plural? which language?

- Linking to the AAT and other Getty Vocabularies allows the variant terms and other links and information in the AAT, ULAN, or TGN record to be used in retrieval of the work

Work Type: Plural, language



Catalog Level item
Classification vessels
Work Type vase
Title Blue and White Glazed Globular Vase
明 永樂 青花龍紋天球瓶
Creator unknown Chinese
Creation Date 1403/1424 CE
Subject (general) object (utilitarian)
(specific) | animal | dragon
Current Location National Palace Museum
(Taipei, Taiwan) **ID:** 012547N000000000
Measurements 42.9 cm high and 9.7 cm
diameter; foot diameter 15.8 cm
Materials blue and white porcelain
| porcelain (material) | blue-and-white
(ceramic glaze)

ID: 300132254 **AAT**

vases (vessels (containers), <containers by form>, ... Furnishings and Equipment)

Note: vases (preferred, C, U, English, AAT) which are usually taller than they are wide. They are used for displaying flowers and other objects. They come in a range of shapes and used to hold liquids.

Term: vase (C, U, English, AAT) (French-P, D, N)
花瓶 (C, U, Chinese (Simplified)) (French, AD, U, N)
陶瓶 (C, U, Chinese (Simplified))
huā píng (C, U, Chinese (Simplified)) (Pinyin)
hua ping (C, U, Chinese (Simplified)) (Pinyin without tones)
hua p'ing (C, U, Chinese (Simplified)) (Wade-Giles)
vazen (C, U, Dutch-Flemish)
vaas (C, U, Dutch, AD)
vasos (C, U, Spanish)
vaso (C, U, Spanish)

Facet

Hierarchical Position:
Objects Facet
... Furnishings and Equipment (Hierarchy Name) (G)
..... Containers (Hierarchy Name) (G)

Specificity

- It may be appropriate to link to historical names, if system allows it
- In this case, index the name as it appears inscribed on the work
- Through TGN, all other names are linked

TGN

Location: Historical names

Firenze (*preferred, vernacular, Italian-preferred*)

Florence (*English-preferred*)

Florenz (*German-preferred*)

Florenca (*Spanish-preferred*)

Fiorenza (*historical*)

Date: Medieval

Start: 900 *End:* 1700

Florentia (*historical, Latin*)

Date: name of Roman colony on North bank of

Start: -100 *End:* 1500

Florentine (*adjectival, English*)

- Names and terms may be historical, may have dates

Cat. Level: item Class.: maps

Work Type: xylograph

Title: Fiorenza: From Disegni delle più illustri città

Creator: D. Zenoi, published by Giulio Ballino

Date: 1569

Locat

Gene

Speci

Specific Subject: Fiorenza [TGN]



Specificity

LC Control Number: n 79018152

HEADING: Moore, Henry, 1898-1986

000 00967cz a2200253n 450

001 4213247

005 20060504162806.0

008 790305n| acannaabn |a aaa

010 __ |a n 79018152 |z n 79018153

035 __ |a (DLC)n 79018152

040 __ |a DLC |c DLC |d DLC |d DLC-R |d DLC

100 1_ |a Moore, Henry, |d 1898-1986

400 1_ |w mnaa |a Moore, Henry Spencer, |d 1898-

ULAN names

Moore, Henry (preferred, index, LC)

Henry Moore (display)

Moore, Henry Spencer

- You may choose terms or names preferred by other vocabularies if you wish
- E.g., LOC name is flagged in the ULAN record

CONA ID 700000137 Catalog Level: item

Classification: sculpture

Work Type: monumental sculpture

Title: Large Arch Creator: Henry Moore (British, 1898-1986)

Patron: Xenia Miller and J. Irwin Miller

Creation Date: installed in 1971

Location: Columbia University, USA, A-11, 11th Floor, CL 11-B



Specificity

- Current Location
- Flag with extensible list of Types creation, discovery, original, architectural context
- Location may be a Repository (corporate body) linked to ULAN (in ULAN, the repository place is in turn linked to TGN)
- Location may be a Geographic Location linked to TGN

Location: Geographic, repository, flags for Type

Catalog level: item *Class:* Sculpture *Work Type:* hacha

Title: Hacha (Ceremonial Ax)

Creator Display: unknown Veracruz

Creation Date: Late Classic Veracruz (600-900 CE)

Current Location: Dumbarton Oaks (Washington DC, USA) *ID:*

Current Location:

Dumbarton Oaks (Washington, DC, USA)

[ULAN 500235090]

Repository Number: B38 VCS

Location: Veracruz (Mexico) *Type:* discovery

[TGN 7005599]



Specificity

- Subject terms may be derived from various vocabularies
- Use the vocabulary having terms that best describe the subject

Cat. level: item Class: photographs
Work Type: photograph
Title: *Lincoln on the Battlefield of Antietam*
Creator: Alexander Gardner (American photographer, 1821-1882)
Date: 1862 Material: albumen print Dimensions: 8 5/8 x 7 3/4 inches

Subject: Several vocabularies



General

portraits
history and legend

Specific

Antietam National Battlefield
(Sharpsburg, Maryland, United States) . **TGN**

American Civil War (event) **IA**

Abraham Lincoln (American president,
1809-1865) **ULAN**

John McClelland (American Union
General, 1812-1900) **ULAN**

Allan Pinkerton (American Secret
Service agent, detective, 1819-1884) . **ULAN**

army camp **AAT**

tents (portable buildings) **AAT**

Specificity

- Does your source name the species? pomegranate (*Punica granatum*)? Blue Morpho (*Morpho menelaus*)? Banded Sphinx Moth (*Eumorph fasciatus*) caterpillar? Do not include information if you are uncertain (e.g., “butterfly” or species *Morpho menelaus*)
- May link to scientific or common name, as well as to plurals, singulars, languages as necessary

Subject: Scientific, common name

AAT

Top of the AAT hierarchies

.... Agents Facet

..... Living Organisms (hierarchy name)

..... living organisms (entities)

..... Eukaryota (domain)

..... Animalia (kingdom)

..... Arthropoda (phylum)

..... Hexapoda (subphylum)

..... Insecta (class)

..... Lepidoptera (order)

..... Papilionoidea (superfamily)

..... Nymphalidae (family)

..... Morpho (genus)

..... Morpho menelaus (species)

AAT

Papilionoidea (superfamily) (preferred, C,U,S,English-P,D, (superfamily) (Latin-P,D,U,N) (superfamilie) (Dutch-P,D,U,U)
butterflies (C,U,ES,C,English,AD,U,N)
butterfly (Papilionoidea superfamily) (C,U,English,AD,U,N)
true butterflies (C,U,English,UF,U,N)
Lepidoptera diurna (C,U,English,UF,U,N)
Rhopalocera (C,U,English,UF,U,N)
鳳蝶總科 (總科) (C,U,Chinese (traditional)-P,D,U,U)
真蝶總科 (C,U,Chinese (traditional),UF,U,U)
fèng dié zǒng kē (C,U,Chinese (transliterated Hanyu Pinyin)
feng die zong ke (C,U,Chinese (transliterated Pinyin without diacritics)
feng tieh tsung k'o (C,U,Chinese (transliterated Wade-Gile

Cat. level: item
Class: prints and drawings Work Type: print
Title: Pomegranate with Blue Morpho Butterflies
Creator: Maria Sibylla Merian Creation Date: ca. 1705
Materials: watercolor and gum arabic over partial transfer print on vellum

General Subjects: ▪ animal ▪ botanical

Specific Subjects:

Morpho menelaus (species)

Punica granatum (species)

Eumorph fasciatus (species)

Related Work: The Insects of America
Current Location: The
Her Majesty Queen E



Indexing Using the Getty Vocabularies

CONA ID: 700008616

Specificity

“untitled”?

Titles or names

- Do not leave “core” fields blank
- Avoid using the term “untitled” as a Title unless it is so-named by the artist or by the owner/repository
- If no title is given, construct a descriptive title
- In this example, the repository has given the work a title

Catalog Level: item

Classification: prints and drawings Work Type: screen print

Creator: Roy Lichtenstein (American, 1923 – 1997)

Creation Date: 1965

Current Location: National Gallery of Art (Washington, DC); Gift of Roy and Dorothy Lichtenstein; 1996.56.139

Title: Brushstroke
Title Type: repository

Value: 58.4 *Unit:* cm *Type:* height

Value: 73.6 *Unit:* cm *Type:* width

Extent: image

Value: 56.4 *Unit:* cm *Type:* height

Value: 72.4 *Unit:* cm *Type:* width

Extent: framed

Value: 76.7 *Unit:* cm *Type:* height

Value: 92.2 *Unit:* cm *Type:* width

Value: 4.4 *Unit:* cm *Type:* depth

Mat & Tech: color screen print on heavy, white wove paper

Inscriptions: lower right in graphite: rf Lichtenstein H.C. G

Leo Castelli Gallery

Chiron Press



Specificity

Titles or names

- Do not leave “core” fields blank
- Avoid using the term “untitled” as a Title unless it is so-named by the artist or by the owner/repository
- If no title is given, construct a descriptive title
- In this example, title is constructed

Cat. level: item ▪ *Class:* prints and drawings ▪ American art
**Work Type:* design drawing ▪ competition drawing
**Title:* Temple Design
for the Lincoln Memorial
Title Types: descriptive
constructed
**Creator Display:* architect: Henry Bacon (American, 1866-1924); draftsman: Jules Guéren (French, 19th-20th century)
Role: architect ▪ [\[link\]](#): Bacon, Henry

**Title:* Temple Design
for the Lincoln Memorial

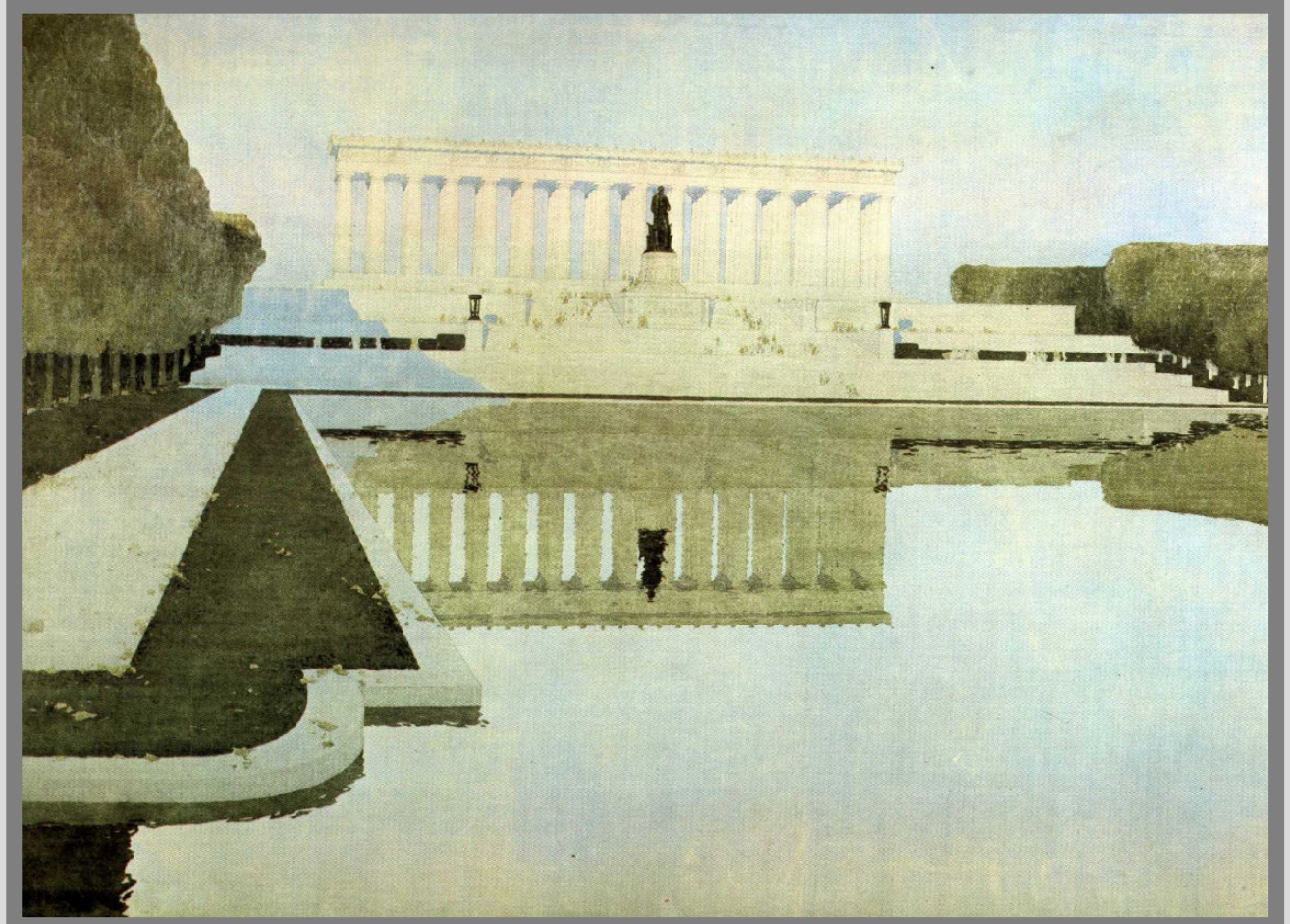
Title Types: descriptive

(Washington, DC, USA) ▪ *ID:*unavailable

- **Measurements:* unavailable
 - **Materials and Techniques:* ink and watercolor on paper
- Material* [\[links\]](#): ink ▪ watercolor ▪ paper
- *Related Work:*

Relationship Type [\[controlled\]](#): depicts

[\[link to Work Record\]](#): Lincoln Memorial (Washington, DC, USA); Henry Bacon (American architect, 1866-1924) and Daniel Chester French (American sculptor, 1850-1931), 1915-1922



Specificity

- Place information in the correct field
- E.g., an inscription is not necessarily a title
- Record long inscriptions in the Inscription field

Titles vs inscription

Cat. level: item Classification prints and drawings

Work Type poster | lithograph

Title: Chat Noir

Title: Poster of a Black Cat, for the Reopening of the Chat Noir Cabaret

Creator Théophile-Alexandre Steinlen (Swiss artist, 1859-1923)

Creation Date 1896

General Subject advertising/commercial | animals

Specific domestic cat | Chat Noir (cabaret) | Rodolphe Salis (French performer, 1851-1897) | shadow theater

Current Location Santa Barbara Museum of Art (Santa Barbara, California): ID:1991.17

Dimensions 61.6 x 39.62 cm (24 1/4 x 15 5/8 inches)

Mat & Tech: lithograph | ink | paper | lithograph

Inscription: along right side and bottom: Prochainement / la très illustre Compagnie du / Chat / Noir / avec / ses Pièces d'Ombres / Célèbres, ses Poètes / ses Compositeurs / Avec / Rodolphe Salis



Specificity

Work type? or Shape?

Catalog level: item

Class: ▪ architecture ▪ European art

Work Type: ▪ entrance

Title: Pyramids: Entrance to the Louvre

Creator Display: I. M. Pei

Current Location: Louvre Museum Courtyard (Paris, France)

Role: architect Pei, I. M. (American, born 1917 in China)

Creation Date: 1989 : ▪ *Start:* 1989 ▪ *End:* 1989

General Subject: architecture *Type:* isness Specific: museum entrance

Dimensions: 21.6 m (71 feet) pyramid

▪ **Value:** 21.6 **Unit:** m **Type:** height |

Shape: pyramidal

Mat & Tech: and Techniques: glass and steel rods and cable

Material [links]: ▪ glass ▪ steel *Technique [links]:* ▪ cable

Part of: Louvre Palace (Paris, France) CONA ID 700008630

- Work Type is linked to AAT
- Be sure to use the correct term, noting hier context and meaning of the term in AAT



pyramids (tombs or platforms)	300004838
pyramids (geometric figures)	300163119
pyramids (dessert containers)	300202483

- But is Work Type “pyramids” here?
- Not a tomb; geometric figure not a “work type”
- Better to use Work Type for function = “*entrance*”
- Form = *pyramidal* as Shape under Dimensions

Indexing Using the Getty Vocabularies

Specificity

Relative to catalog level

Catalog levels

item
volume
group
subgroup
collection
set
series
multiples
component

Getty

- Museums primarily catalog items
- Special collections and archives catalog groups, volumes, etc.
- What is the catalog level of your work record?
- Specificity of terms may be determined by the level at which you catalog
- Different terms are relevant for different levels

Group-Level or Item-Level cataloging?

- **Approach A:** Describe/catalog only the broader work or group using general terms for the whole as well as important specific terms for the important parts or items
- **Approach B:** Describe/catalog the broader work or group, knowing you intend to make separate records for all or the most important parts or items.
 - For the broader work or group, use general terms applicable to all the parts
 - For the parts or items, use terms specific for each

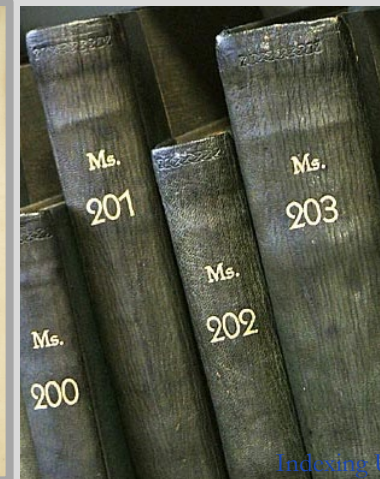


for the volume

Subject:
psalms [AAT]
antiphons [AAT]

for the folio

Subject:
Isaiah (prophet,
Old Testament)
[LA]
Book of Isaiah
(9:2–7 Psalm 96)
[LA]



for the group

Subject:
liturgical texts
[AAT]

Specificity

- Requires separate records
- Object in hand, or the object depicted in the visual surrogate?
- Are you creating a record for the digital image or slide of the illumination? Or the work depicted?

Cataloging work or image?



Exhaustivity

- **Exhaustivity** refers to the degree of depth and breadth that the cataloger uses, often expressed by using a larger number of indexing terms or a more detailed description
- However, is it useful to index every possible applicable term?
- If not, where do you draw the limit? Index the most important or most prevalent characteristics

- How many aspects of a work do you catalog? How many terms do you assign to a work?
- Time limitations
- Focus of the collection

Exhaustivity

- How many aspects of a work do you catalog?
- Only core fields, or do you need others?
- How many terms do you assign to each field of a work record?



Catalog level: volume

Class: books and manuscripts

Work Type: gradual

Title: Gradual for Monastic Use

Creator: illumination: workshop of: Pacino di Bonaguida;

patron: probably Augustinian

Creation Location: Florence (Italy)

Creation Date: 1303/1340

Style: Gothic

Measurements: 174 folios; overall (page dimensions): 35.7 x 26.2 cm (14 1/16 x 10 5/16 inches)

Materials: tempera and ink on parchment; bindings of calfskin over boards with metal clasps

Current Location: Museum of Fine Art (Boston, Massachusetts)

Description: A gradual (a liturgical book, containing chants for the Mass) for monastic use, possibly the Augustinian order, with 174 folios (ff.) and 2 leaves:

ff. 1 - 109: Gradual: Temporale and Sanctorale (partial)

ff. 109v - 113: Litany

ff. 114 - 160: Gradual: Temporale (continued)

ff. 161 - 168: Temporale sequences

(f. 168v: Originally blank, with a 15th-century addition in Italian on three staves: "Sanctus della domenica...")

ff. 169 - 174v: Credo (four repetitions of "Patrem omnipotentem," each with a different melody)

Exhaustivity



- Multiple terms may apply
- E.g., one work may require multiple work types

Cat. level: item Class: Prints, Drawings, and Photographs

Work Type: fraktur birth certificate baptismal certificate

Title: Birth and Baptismal Certificate

Creator: Francis Portzline (American (Pennsylvania German), active 1838 -1855)

- *Record Type:* item
- *Class:* ▪prints and drawings
 - American art
- **Work Types:*
 - fraktur (document)
 - birth certificate
 - baptismal certificate

Exhaustivity

- Multiple terms may apply
- E.g., one work may require multiple work types

Cat. level: item Class: Manuscripts Near Eastern works

Work Types: manuscript palimpsest prayer book homiliary

Title: MS 575. Codex Armenicus Rescriptus. Palimpsest.

Creator: Unknown

Authors: John Chrysostom

Prayers, In

Date of Ca

Medium: p

case by Ad

Measur

(Erkathgir

with 7 inte

Language:

Provenanc

Germany (ca. 1900); 5. Walter Adam, Magdeburg and Goslar (1918/50-1964); 4. Carl

Wilhelm Adam, Goslar (1964-1987); 5. F. Dörfling, Hamburg 1.6.1988-1989; 6. Sam Fogg,

London.

Description: The Codex Armenicus Rescriptus is a parchment originating at the Monastery of

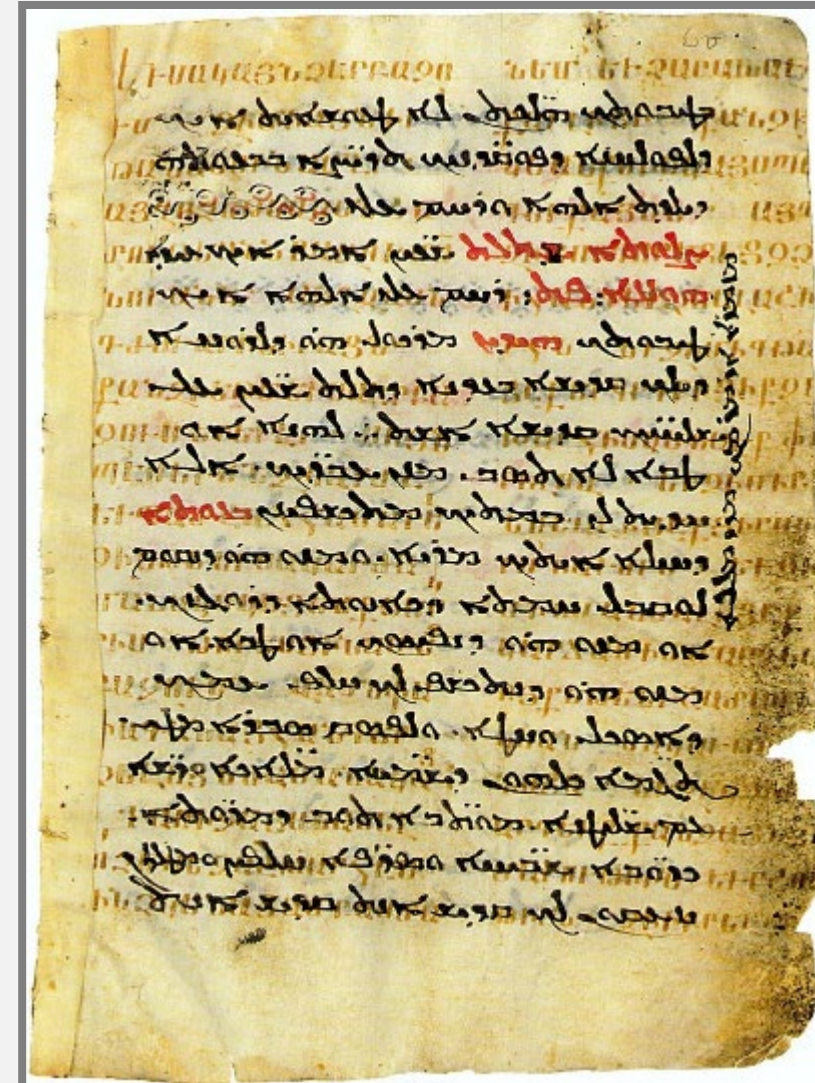
St. Catherine at Mt. Sinai. The original text on the parchment was an Armenian version of the

Homilies on the Psalter by John Chrysostomos. It was later overwritten with Melkite liturgical

prayers

- *Record Type:* item
- *Class:* ▪ manuscripts ▪ Near Eastern works
- **Work Types:*
 - manuscript ▪ palimpsest
 - prayer book ▪ homiliary

- Work type may change over time
- Include terms for original and current type
- Was originally a set of homilies;
- second text is a prayer book



CONA 70008558

Exhaustivity

Group or item-level

Catalog level: group

Class: architectural drawings

Title: Group: Drawings for Falling Water (Kaufman House), Bear Run, Pennsylvania

Creator: Frank Lloyd Wright

[link]: Wright, Frank Lloyd, Role: architect

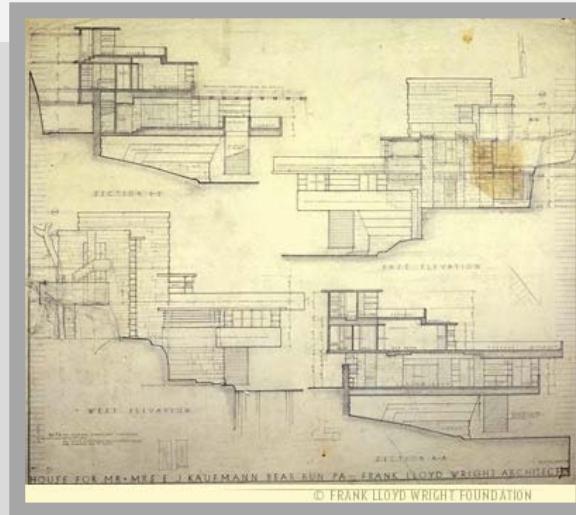
Work Types:

- preliminary drawings
- presentation drawings
- working drawings
- sections
- elevations
- plans

Description:

Current Location: Frank Lloyd Wright Home and Studio

- Should terms reflect all items in the group?
- Or use broad terms (“drawings”), because you plan to use specific terms in records for each item?



Exhaustivity

- Item in hand, or conceptual work, or series?

Group Record

Catalog level: series ▪ *Class [controlled]:* prints
**Work Type* ▪ color woodcuts
**Title:* Thirty-six Views of Mount Fuji: First Series
Alternate Title: First Series: Mt. Fuji Views

**Creator*



-- Series --

**Creator*

**Subject*

**Current*

Style: Edo

**Measurements:* 36 prints, average plate size: 24 x 37 cm
 [cont.] ▪ *Extent:* items Value: 36 Unit: N/A Type: count

▪ *Qualifier:*

Unit: cm

**Materials and Techn*
 paper

[link] ▪ ink

Description: Hokusai
 the first series.

Work Record

Catalog level: item ▪ *Class:* print
 ▪ *Work Type:* color woodcut
 ▪ *Title:* Great Wave at Kanagawa
 ▪ *Title:* In the Hollow of a Wave
 ▪ *Type:* alternate
 ▪ *Creator Display:* Katsushika Ho
 published by Nishimura Eijudo (J
 ▪ **Role :* printmaker ▪ [link]: Hok
 ▪ **Role :* publisher ▪ [link]: Nish
 ▪ **Creation Date:* ca. 1831/1833
 ▪ *Latest:* 1836
 ▪ **Subject :* seascape ▪ wave
 (Chubu, Japan) ▪ Kanagawa (Ka
 ▪ *Style* [link]: Edo

CONA 70000091

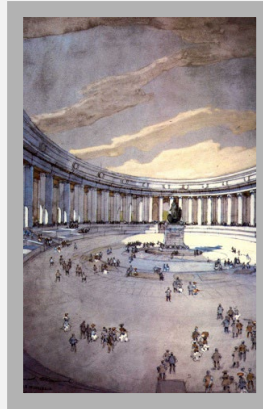


- Whole/Part Records for a series and a part

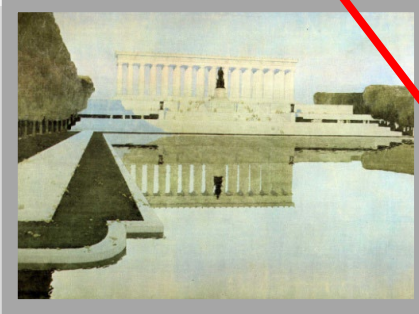


Exhaustivity

CONA ID 700008520
Cat. level: item Class: drawings Work Type: drawing
Title: *Circular Monument for Lincoln*
Maker: architect: Daniel H. Burnham; draftsman: C.B.
Date: 1908-1909
Location: United States Capitol collection (Washington, DC)



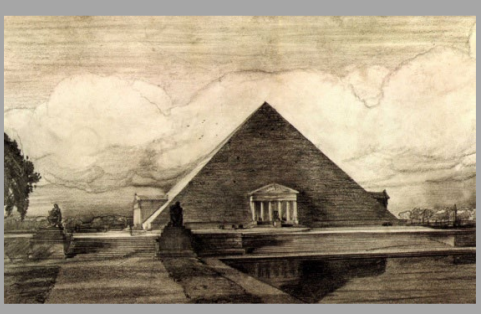
CONA ID 700008521
Cat. level: item Class: drawings Work Type: drawing
Title: *Temple design for the Lincoln Memorial*
Maker: architect: Henry Bacon;
draftsman: Jules Guéren
Date: 1912
Location: National Archives (Washington, DC)



CONA ID 700008522
Cat. level: item Class: drawings Work Type: drawing
Title: *Temple design for the Lincoln Memorial*
Creator: architect: John Russell Pope; draftsman: Otto R.
Eggers
Date: 1912
Location: National Archives (Washington, DC)

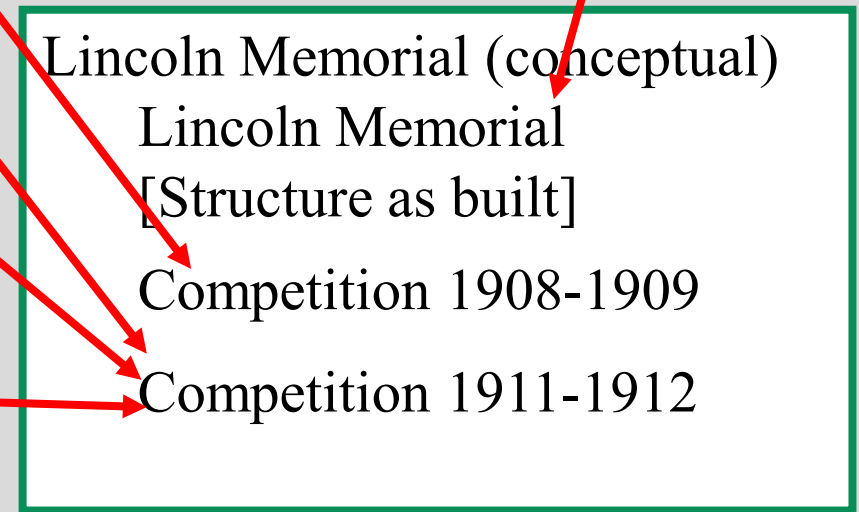


CONA ID 700008523
Cat. level: item Class: drawings Work Type: drawing
Title: *Pyramid design for the Lincoln Memorial*
Creator: architect: John Russell Pope; draftsman: attributed to
Rockwell Kent
Date: 1912
Location: National Archives (Washington, DC)



- Another conceptual relationship
- Entries in an architectural competition may be considered a group (non-archival)
- Link a drawing to the appropriate competition group through hierarchical relationships
- [Record competitions as events in Events]
- *Examples are from CONA, but applicable to any system*

CONA ID 700008524
Cat. level: item Class: drawings Work Type: drawing
Title: *Lincoln Memorial*
Creator: architect: Henry Bacon; sculptor: Daniel Chester French
Creation Date: 1914-1922
General Subject: Architecture
Specific Collections: National Archives
Current Location: National Archives
Material & Techniques: Indiana limestone



Exhaustivity

Works are linked to each other

Hierarchical relationships

- In this case, are all the works in one cave considered a set or object grouping?
- Linked to the Caves Complex through associative relationships?



Record Type: built work **Catalog Level:** complex

Classification: architecture

Work Type: complexes (buildings)

Title: *Mogao Caves Complex*

Title: *Grottes de Mogao*

Title: 莫高窟

Creator: various artists

Date: 4th to the 14th century

Location: Mogao caves (ancient site) (Dunhuang, China)

Desc. Note: 492 cells and cave sanctuaries in Mogao are famous for statues and wall paintings, spanning 1,000 years of Buddhist art.

TGN

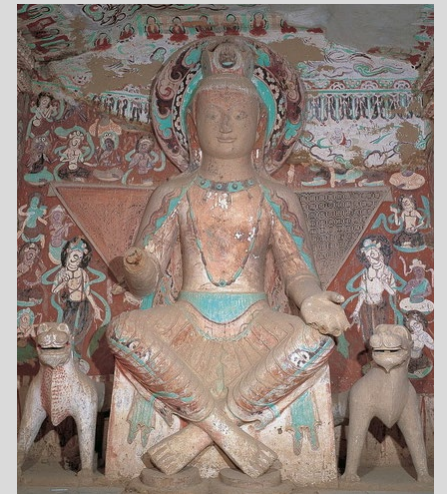


Title: *Mogao Cave 275*
grouping

an Object
Grouping?

architectural
context is

Broader Context: Mogao Cave 275
[as an object grouping]
Relationship Type: Whole/part



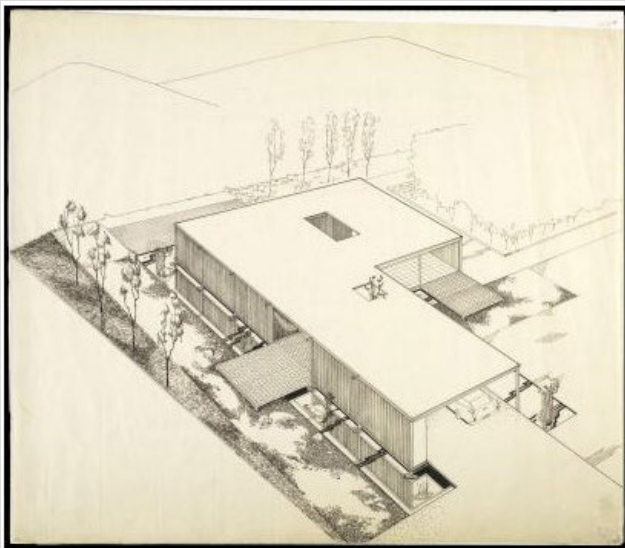
Title: *Buddha from Cave 275*
a sculpture (“Movable” Work)?

Exhaustivity

Associative relationship

- Movable works may be linked to built works
- *Examples are from CONA, but applicable to any system*

drawing



**preparatory
for**

CONA ID 700000120 Catalog level: item
Class.: drawings Work Type: architectural drawing
Title: Case Study House No. 21
Creator: Pierre Koenig
Current Location: GRI Special Collections, Getty Center (Los Angeles, California) 2006.M.30-

house



CONA ID 700000090 Cat. level: item
Class.: architecture Work Type: house
Title: Case Study House No. 21
Title: Bailey House Title: CSH #21
Creator: architect: Pierre Koenig
Creation Date: 1956-1958; renovated 1998
Dimensions: 1 story, 1320 square feet, 4 rooms and 2 baths, on a 110 x 160 foot lot
Mat & Tech: and Techniques: steel frame and flat roof deck
Current Location: Los Angeles (California, USA)
Address: 1635 Woods Drive

photograph



depicts

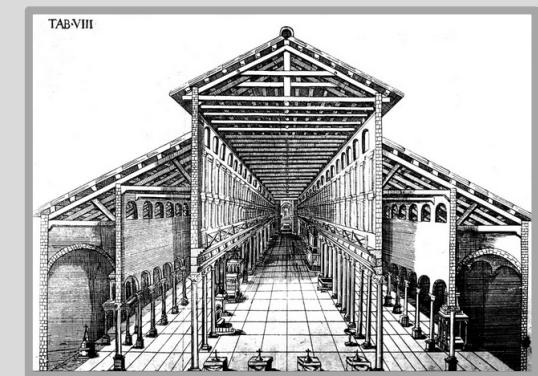
CONA ID 700008539 Cat. level: item
Class.: photographs Work Type: photograph
Title: Case Study House No. 21
Creator: Julius Shulman
Current Location: GRI Special Collections, Getty Center (Los Angeles, California); 2004.R.10-26622-32-LF

RELATIONSHIPS BETWEEN WORKS

may be rich and complex

- St. Peter's in Rome and its dome
- *Examples are from CONA, but applicable to any system*

CONA ID 7000016 Class: architecture
Work Type: basilica cathedral
Title: Basilica di San Pietro in Vaticano
Title: San Pietro in Vaticano
Title: Petersdom
Title: New St. Peter's
Title: Basilica Sancti Petri
Title: Basilique de Saint-Pierre
Creators: principal architects: Donato Bramante, Michelangelo, Carlo Maderno, Gian Lorenzo Bernini, ...
Creation Date: second church on the site, begun in 1506, constructed 1546 to 1564 and 1593-1626
Mat & Tech: masonry
Dimensions: length 730 feet (220 m); width 419 feet (128 m); height of dome above street level: 452 feet (138 m)
Location: Rome (Italy) 41°54'8"N 12°27'29"E



CONA ID 700002014 Class: architecture
Work Type: basilica cathedral
Title: Old Saint Peter's Basilica
Title: Antica basilica di San Pietro in Vaticano
Title: Antigua Basílica de San Pedro
Creator: unknown architect; commissioned by Constantine I
Date: constructed in 4th century
Material: masonry
Location: Vatican (Rome, Italy)

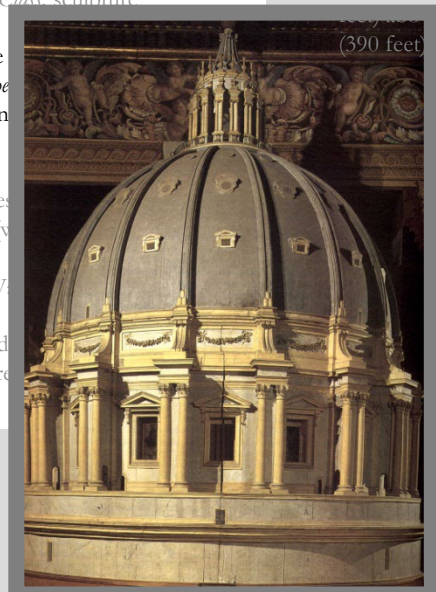
Indexing Using the Getty Vocabularies

part of

study for



model for

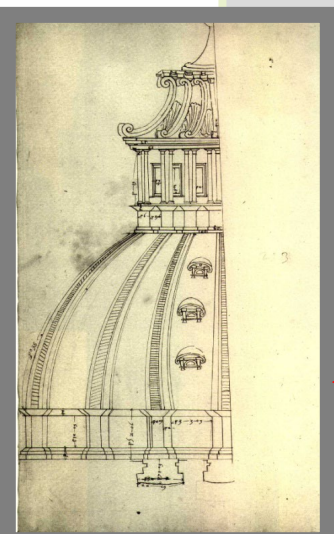


depiction of



CONA ID 700008435 Class: prints and drawings
Work Type: design drawing
Title: Section and Elevation of the Drum of St. Peter's
Title Type: descriptive
Creator: Michelangelo (Florentine sculptor, architect, 1475-1564)
Date: mid 1550s
Medium: incised lines, charcoal with traces of red on paper
Dimensions: 270 x 267 cm
Type, Purpose, Method of Representation: architectural drawing
Descriptive Note: This is the only known drawing of the dome of St. Peter's Basilica, Rome.
Subject/Built Work: •section •elevation
Related Work: Dome (St. Peter's Basilica, Rome)
Relationship type: design for
Current Location: Musée des Beaux Arts (Lille, France) Collection Wicar, 93-94

CONA ID 700008437 Class: prints and drawings
Work Type: measured drawing
Title: External elevation of the model of St. Peter's
Title Type: descriptive
Creator: circle of Etienne Dupérac
Subject: •elevation •Model of St. Peter's Basilica
Related Work: Model of St. Peter's Basilica
Date: probably late 1560s
Medium: brown ink on paper
Descriptive Note: Probably done in preparation for the series of ...
Current Location: Metropolitan Museum of Art (New York, New York, USA); 49.92.91



Exhaustivity

Titles or names

- Include historical information when appropriate
- Include former names or titles
- Titles or names may have associated dates
- For rules for establishing Start and End dates, see CONA documentation

Cat. level: item Class: architecture Work Type: skyscraper

Title: Willis Tower

Preference: preferred Date: renamed 16 July 2009

Title: Sears Tower Preference: variant/alternate

Creator: Skidmore, Owings and Merrill (American, established 1939), for Sears Roebuck and Company (American retail company, founded 1886); architect: Graham, Bruce

Creation Date: completed in 1973

Current Location: Chicago (Illinois, USA) Address: 233 South Wacker Drive Authority

Dimensions: height to the top of the roof: 442 m (1,450 feet); height to the highest occupied floor

Title: Willis Tower Historical: Current

Preference: preferred

Date: renamed 16 July 2009

Start: 2009 End: 9999

Language: English Lang.Pref.: preferred

Title: Sears Tower Historical: Historical

Preference: variant/alternate Other [type]: former



Exhaustivity

- Creator is required
- If there are multiple creators, list them all if known, along with roles

Roles of various creators

Cat.level: item Class: prints and drawings Work Type: screen print

Title: Vote McGovern

Creator Display: Andy Warhol (American, 1928-1987)

Creator Display: Andy Warhol (American, 1928-1987)

Role: printmaker [\[link\]](#): Warhol, Andy

Roles: •artist collaboration • supervision •proofing

[\[link\]](#): Tyler, Kenneth

Role: edition printing [\[link\]](#): Wasserman, Jeffrey

Role: assistant: [\[link\]](#): Dressen Robert

Role: assistant: [\[link\]](#): Knisel, Robert

Catalogue Number: 54.1 Gemini Work Number AW72-5046; Old Gemini

Catalogue Number 396;

NGA Accession Number 1984.104.23, 1985.47.229

Creation Date: 1972

Signature Date: 1972

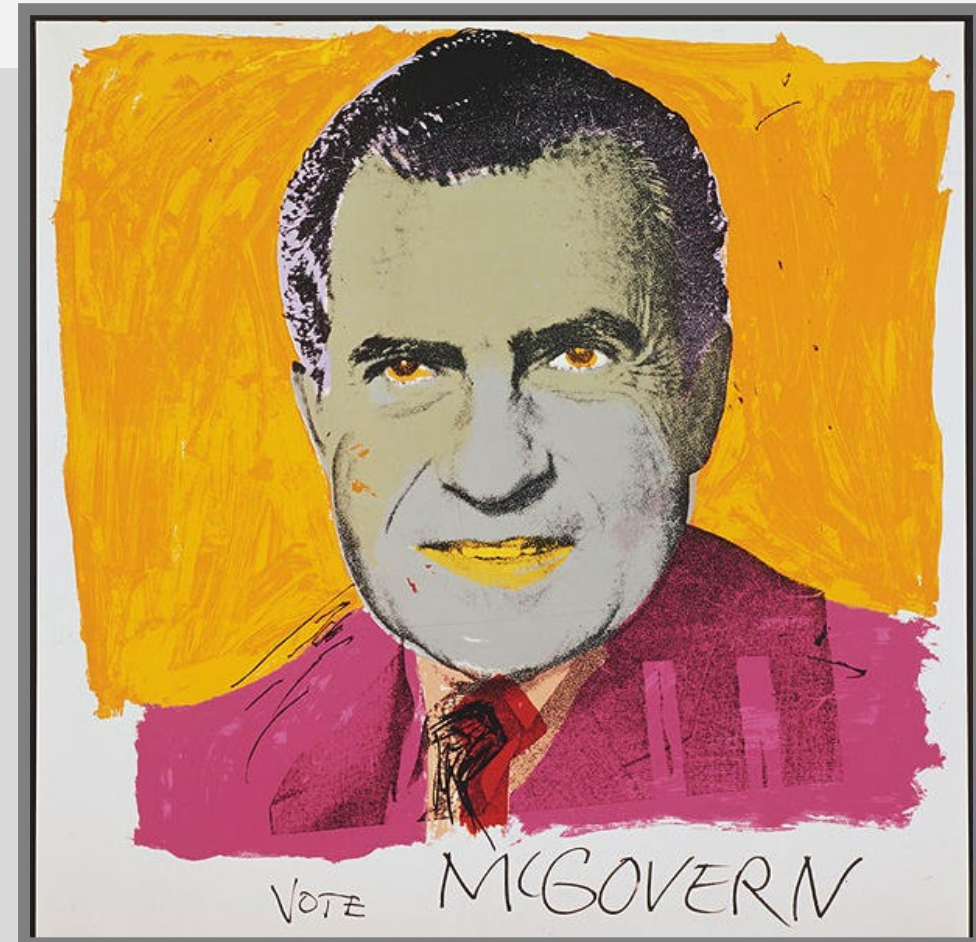
Publication Date: 1972

Materials: 16-color screenprint Support Arches 88

Edition: 250 plus RTP, PPII, 3 GEL, 16 CTP, C

Facture: Colors or Sequence 1. blue (handmade lacquer stencil), 2. transparent yellow (handmade lacquer stencil), 3. orange (permanent emulsion photo screen), 4. magenta (permanent emulsion photo screen), 5. light orange (permanent emulsion photo screen), 6. gray (permanent emulsion photo screen), 7. yellow-orange (hand-cut lacquer stencil), 8. magenta (hand-cut lacquer stencil), 9. red (hand-cut lacquer stencil), 10. purple (hand-cut lacquer stencil), 11. yellow (hand-cut lacquer stencil), 12. transparent magenta (hand-cut lacquer stencil), 13. red/black/yellow (hand-cut lacquer stencil), 14. black (permanent emulsion photo screen). Collaboration and Supervision Kenneth Tyler. Processing and Proofing Kenneth Tyler. Edition

Printing Jeffrey Wasserman assisted by Robert Dressen, Robert Knisel



Exhaustivity

- Creator is required
- Patrons of architecture should be included
- In many cases, the patron is known but the architect is unknown

Creation and patronage

Cat. level: item **Classification** architecture

Work Type mausoleum

Titles Taj Mahal

Creator Display:

architect: Ustad Ahmad Lahauri (Indian architect, ca.1580-1649);

patron: Shah Jahan (Mughal emperor, born ca. 1592)

Creation Date 1632-1653

General Subject architecture **Type:** isness

Specific burial **Extent:** purpose | Mumtaz Mahal **Extent:** dedication | Shah Jahan **Extent:** dedication

Current Location Agra, Uttar Pradesh, India ; 27°10'30"N 78°02'31"E

Dimensions height: 561 feet (171 m)

Mat & Tech: white marble



Pre-coordination and Post-coordination

- Which will your local system or authorities allow?
- What is your local methodology?

Pre-coordination or Post-coordination

pre-coordination: Combination of individual concepts into compound or complex terms at the point of data storage

post-coordination: Combination of individual concepts into compound or complex terms at the point of retrieval

Material: red silk



When you need compound terms that are not bound in the published authority, construct them locally

pre-coordination

- Compound terms are multiple-word terms
- A published vocabulary typically limits inclusion of compound terms, only “unique concepts”
- You may construct additional compound terms in the work record, “precoordination”
- E.g., if you have a red silk and black wool vestment, indexing should bind “red” and “silk” together

Cat. level: item Class: costume Work type: chasuble

Title: Opus Anglicanum, Chasuble

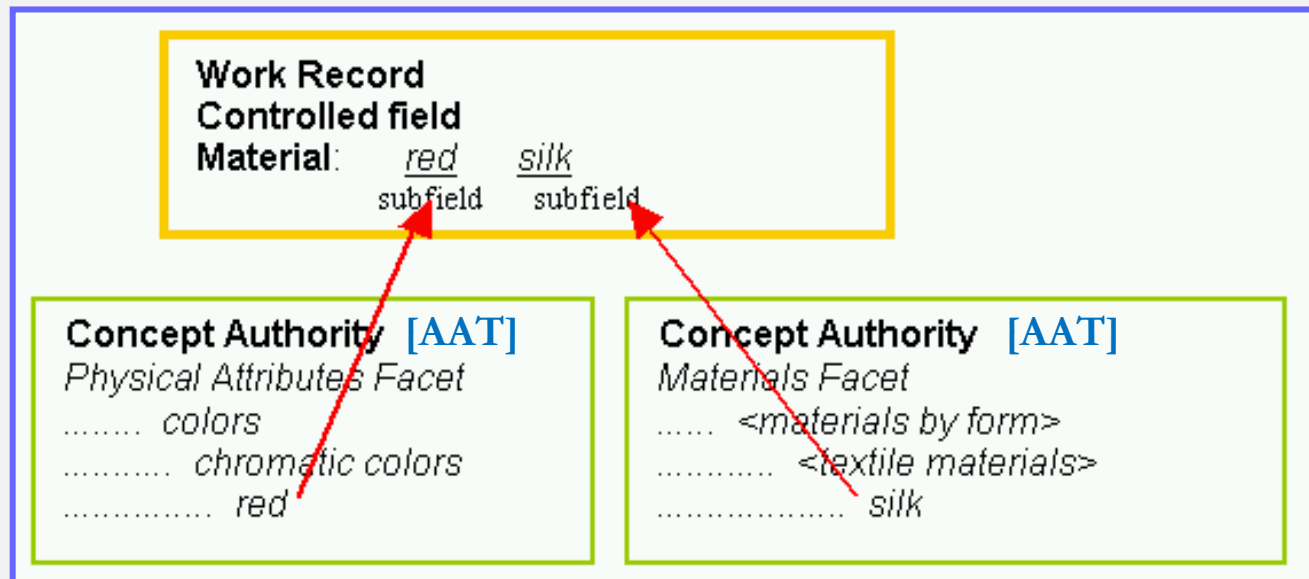
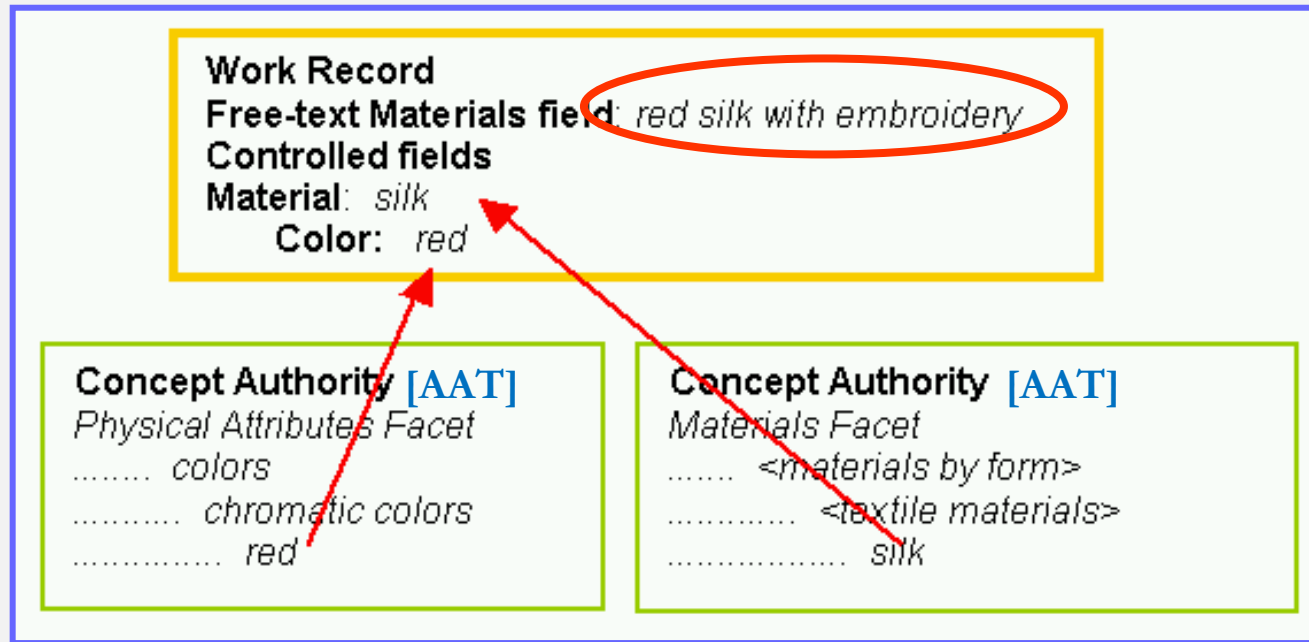
Creator: unknown English Date: 1330/1350

Material: red silk

Location: Metropolitan Museum of Art (New York); Fletcher Fund, 1927 (27.162.1)

pre-coordination

- Using separate fields that are bound, e.g., Material and Color
- Using subfields within a field



pre-coordination

- Using local compound terms that bind the two words together

Work Record

Free-text Materials field: *red silk with embroidery*

Controlled fields

Material: *silk*

Color: *red*

Concept Authority [AAT]

Physical Attributes Facet

..... colors

..... chromatic colors

..... red

Concept Authority [AAT]

Materials Facet

..... <materials by form>

..... <textile materials>

..... silk

Work Record

Controlled field

Material: *red silk*

Work Record

Controlled field

Material: red silk
subfield subfield

Concept Authority [AAT]

Physical Attributes Facet

..... colors

..... chromatic colors

..... red

Concept Authority [AAT]

Materials Facet

..... <materials by form>

..... <textile materials>

..... silk

Concept Authority

Materials Facet (AAT)

..... <materials by form> (AAT)

..... <textile materials>(AAT)

..... silk (AAT)

..... beige silk (local)

..... black silk (local)

..... gray silk (local)

..... pink silk (local)

..... red silk (local)

..... white silk (local)

Work Record

Free-text Materials field: *red silk with embroidery*

Controlled fields

Material/Technique:

embroidery (process) [AAT 300053653]

silk (textile) [AAT 300243428]

red (color) [AAT 300126225]

AAT

Materials Facet

.....<materials by form>

.....<textile materials>

.....*silk* [AAT 300243428]

AAT

Physical Attributes Facet

.....colors

.....chromatic colors

.....*red* [AAT 300126225]

post-coordination

- Index using separate terms
- Combine terms for retrieval, not in the cataloging process

Query on retrieval joins the terms: post-coordination:

Select records where material like 'silk' and like 'red'

[Select records where material_is like '300243428' and like '300126225']

Uncertainty and Ambiguity

and Unknown and Undetermined

Uncertainty and Ambiguity

- Explain any controversies or ambiguous issues
- If an issue is in dispute, it is critical to the intellectual integrity of the record to not express it as a certain fact
- In order to correctly represent the information and allow scholarly research, indicate uncertainty and ambiguity as necessary
- The cataloger should never assume, never choose one choice over another, and never state as a fact something that is debated among experts
- Sources may reflect disputes about any number of characteristics of the work, including the attribution or dates for a particular work
- When multiple suggestions have been made, include the most important, in the method allowed by individual elements

Uncertainty and Ambiguity

- Where a choice must be made for preferred information, prefer the information as accepted by the repository of the work
- Other information, including conflicting opinions, should also be included provided the source is expert and authoritative
- Always cite the source of the information

Issues for Indexing

- **When fields do not display to end-users**, estimating indexing values is flexible
- Some fields do not display to end-users;
for example, the Start Date and End Date do not display to end-users
- For these fields, estimate broadly the span of time that is applicable
- Estimating too narrowly will result in failed retrieval
- However, estimating overly broadly will result in false hits in retrieval
- Rules for estimating in various situations are in CWDA and CONA guidelines
See CONA guidelines
“3.6.1.18.5.1 Minimum requirements for Start Date and End Date”

Example: When a particular year is unknown

Start and End Dates

Cat. level: item **Classification** costume

Work Type mask

Titles Face Mask

Creator unknown Igbo

Creation Date: early to mid-20th century

Start: 19

Creation Date: early to mid-20th century

General Start: 1900 **End:** 1960

Specific face

Current Location National Museum of African Art (Washington, DC): 2004-11-2

Dimensions unavailable

Mat & Tech: wood, cloth, glass beads, metal, buttons, kaolin

- Exact year of creation is often unknown
- Express ambiguity and nuance in display date



Example: When a particular year is unknown

Start and End Dates

- In display date, express uncertainty, nuance, "ca."
- Index the display date with earliest and latest years for retrieval
- Rules for estimating Start and End Dates are in CONA documentation

Catalog Level: item

Class: prints and drawings Work Type: drawing

Title: Pennsylvania German Dish

Creator: rendered by Albert Levone

Creation Date: ca. 1935

Current Location: National Gallery of Art (Washington, DC)

Mat & Tech: watercolor, graphite, and gouache on paperboard

Dimens

Subject: ***Creation Date: ca. 1935***

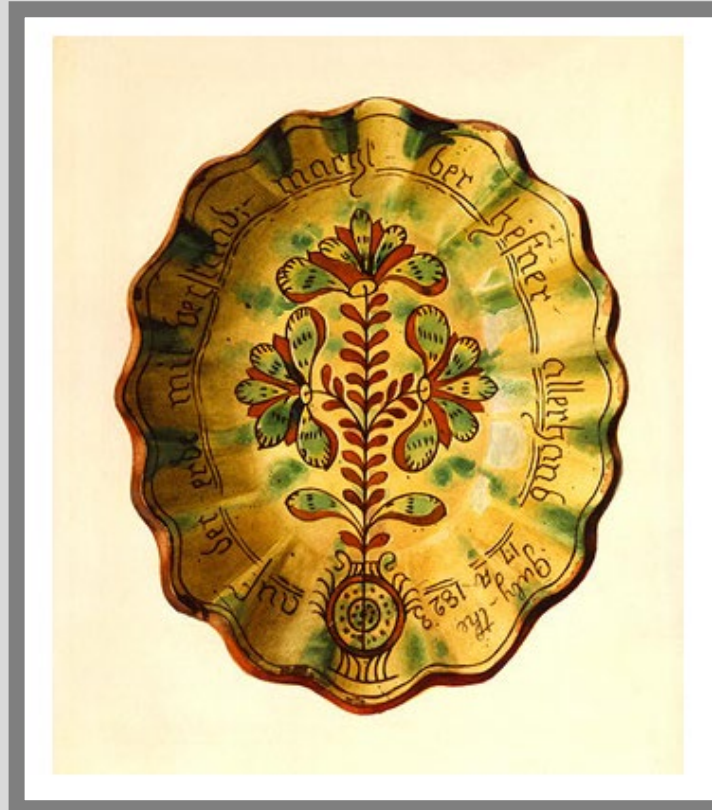
237

Index of: ***Start: 1930 End: 1940***

Descrip

American Design. Dishes made by Pennsylvania German potters came in a variety of sizes and shapes. This oval one with scalloped edges was elaborately decorated by the sgraffito technique. Notice the bold floral design that contrasts with the light strokes of lettering that form a delicate border. Splashes of green worked into the glaze heighten the color of the red clay that is exposed. The dish was made by Samuel Troxel. The inscription reads: "From clay and many skills, the potter fashions what he will, July the 19th 1823."

Related Work: Pennsylvania German Dish



CONA guidelines:
"ca.: For circa (ca.), for works produced within the last several centuries, use a 10-year span for start date and end date (e.g., subtract five years from start date and add five years to end date to create a 10-year span (e.g., creation display date = ca. 1860 could be indexed start date = 1855, end date = 1865)."

Example: When a particular year is unknown

- When date or range is uncertain, express what is known, e.g., "completed by"

Start and End Dates

Catalog Level: item *Class:* sculpture

Work Type: model

Title: Wooden model for the façade of San Lorenzo, Florence

Creator: Michelangelo

Creation Date: completed by 1555

Current Location: Casa Buonarroti (Florence, Italy)

Start: 1550 *End:* 1555

***Creation Date:* completed by 1555**

***Start:* 1550 *End:* 1555**

Start: 1550 *End:* 1555

General Subject: architecture *Type:* description

Specific: façade

Descriptive Note: This is probably one of the two models described by Michelangelo in a letter to his brother, Lionardo, in September 1555. It was ...



Possible resolutions if data is unknown or ambiguous:
index using broader term or index both

Other Issues for Indexing

- **When fields display to end users:** Most fields in a work record are displayed to end-users, both the display fields and often also the indexing fields
- If a field is visible to the end user (even though also used in retrieval), do not make wild estimations or guess
- However, if a specific value is in question, use a broader value or use both of two possible values, depending upon the circumstances

When to use a broader value

- Use Getty Vocabularies to choose broader values; a broader value is the parent in the hierarchical display
- Various issues regarding work type, style, etc. are discussed in CONA documentation

Other Issues for Indexing

- **Work Types, materials, culture:** Using the AAT, choose the most specific term appropriate; however, do not guess
- For example, if you are not sure if the process by which the work was made is *steel engraving*, use the broader term *engraving*
- For any uncertain or ambiguous situations, explain in a display field or the descriptive note
- For further guidance, see CONA Guidelines:
“3.6.1.2 Work Type,” “3.6.2.2 Material Term,” “3.6.2.15 Culture Term”

Example: Index to specificity known

(“Specificity and Exhaustivity” are discussed in more detail above)

Materials Indexing Terms

- If it were not known that this technique is *steel engraving*, cataloger should use the broader AAT term *engraving*

Catalog level: item Classification: prints Work type: steel engraving

Title: A mandarin paying a visit of ceremony

Title: Mandarin rendant une visite de cérémonie

Date: published: ca. 1845

Creator Display: Fox, Angus, after drawing by Thomas Allom; published by Fisher, Son and Company

Related Person: Fox, Angus (British printmaker, 19th century) role: engraver

Related Person: Allom, Thomas (British architect, 1804-1872) role: draftsman

***Materials Display:* steel engraving, hand colored**

Materials Index:

steel engraving (printing process) [AAT]

hand coloring [AAT]

ink [AAT]

paper [AAT]

General Subject: event | human figures

Specific Subject: mandarin (public officer) [AAT] | visit of state (cultural ceremony) [AAT] | palanquin (litter)

[AAT] | procession (cultural ceremony) | Chinese (culture) [AAT]

Hierarchy: part of Movable Work: From series: China illustrated. Publication: Paris : Fisher, Son and Company,

[ca. 1845].

Getty



A Mandarin paying a visit of ceremony

Mandarin rendant une visite de cérémonie

Ein Mandarin bei einer öffentlichen Besuche

abstrahiert

Example: Standard materials may not apply

Materials Indexing Terms

- For installations, performance art, new media, standard materials may not apply
- E.g., the elements of the installation may be components instead of media

Catalog level: other Classification: installations

Work Type: installation

Title: Four Corner Piece

Creator: Bruce Nauman (b. 1941)

Materials Display: installation with four cameras and four monitors

Materials Index:
variable media [AAT]

Components:
monitors (data processing equipment) [AAT]
cameras (photographic equipment) [AAT]



When to index both possible values

- Indexed place names display to the end user
- Various issues regarding location are covered in CONA documentation

Issues for Indexing

- **Locations:** For example, if sources disagree about whether a work was created in 15th-century Bruges or Brussels, you could
 - 1) index the culture as *Flemish* (encompassing both Bruges and Brussels during this period), and/or
 - 2) index both cities using TGN; links to TGN should be repeatable
- Explain in the Descriptive Note that scholars disagree regarding if the work was created in Bruges or Brussels
- For further guidance, see CONA Guidelines:
3.6.1.19.5.2 How to record the Location
- **Flags:** For flags and other fields that are not repeatable, where you must choose one value only, make the best choice possible based on the information at hand

Example: When the location could be either of two places

Location

Catalog level: item Classification: manuscripts Work Type: folio
Title: Bishop Theophilus Finding the Grave of Saint Anthony
Creator: Master of the Brussels Romuléon or workshop (Flemish, active about 1465)
Culture: Flemish
Locations: Current: J. Paul Getty Museum at the Getty Center (Los Angeles, Los Angeles)

Culture: Flemish

Locations:

Current: J. Paul Getty Museum at the Getty Center (Los Angeles, California, United States) [ULAN 500329598] Repository Numbers: 83.MN.127.29; Ms. Ludwig XI 8, fol. 29

Other: Bruxelles [TGN 7007868] **Type:** creation

Other: Brugge [TGN 7007867] **Type:** creation

Saint Anthony (IA)

Hierarchy: part of Invention et translation du corps de Saint Antoine

- Creation location for this work may be either of two places
- Explain in the Descriptive Note, but index both places to allow retrieval by either



Example: When creator is a known individual

- Creator Display includes name in natural order and a brief display biography
- Creator may be one person
- Creator is linked to ULAN

Creator and other people

Cat. level: item

Classification paintings **Work Type** painting | leaf

Title Sitting on Rocks Gazing at Clouds

Title 宋 李唐 坐石看雲

Title Assis sur des rochers en regardant les nuages

Creator Display:

Li Tang (Chinese painter, 1050s-after 1130)

Person: [ULAN 500321561]

Creation Date 12th century

Culture: Song dynasty

General Subject landscapes

Specific rocks | clouds

Current Location National Palace Museum (Taipei, Taiwan)

Dimensions 27.7 x 30 cm

Mat & Tech: album leaf, ink and colors on silk



Example: When creator is a corporate body

- Creator may be a *corporate body*, defined as two or more people working together (not necessarily “incorporated”)

Creator and other people

Catalog level: item **Classification** sculpture

Work Type figurine

Title Beltrame di Milano

Creator Display: Meissen Porcelain Manufactory
(German porcelain factory, 1710 to the present)

Corp. Body: [ULAN 500054662]

Creation Date ca. 1720

General Subject literature

Specific Beltrame di Milano | Commedia dell'Arte

Current Location J. Paul Getty Museum (Los Angeles, California); 86.DE.542

Creation Place: Meissen (Germany)

Dimensions 6 1/2 x 2 11/16 x 2 5/8 inches

Mat & Tech: hard-paste porcelain



Example: When creator is anonymous

Anonymous creators

Catalog level: item **Classification** enamels

Work Type triptych

Titles The Last Judgment

Creator Display: Master of the Orléans Triptych
(French, active late 15th–early 16th century)

Person: [ULAN 500005454]

Creation Date ca. 1500

General Subject religion and mythology

Specific Last Judgement

Current Location Metropolitan Museum of Art (New York, New York): 1975.1.1225

Dimensions center plaque 25 x 22 cm; left plaque 25 x 10 cm; right plaque 25 x 10 cm

Mat & Tech: painted enamels on copper, partly gilded

- Hand is identified
- Known by appellation devised by scholars or repositories
- Nationality and dates surmised from loci and dates of activity



Example: When creator is unknown

Unknown creators

Catalog level: item **Classification** ceramics

Work Type vessel

Titles Vulture Vessel

Creator Display: unknown Aztec

Cultural Group: [ULAN 500202913]

Creation Date 1200/1521

General Subject

utilitarian objects **Indexing Type:** isness

religion and mythology

Specific Subject

New World vulture (Cathartidae (family))

Current Location Metropolitan Museum of Art (New York, New York): 1981.297

Creation Place: Mexico

Dimensions height: 8 3/4 inches

Mat & Tech: ceramic

Culture: Aztec

- Identity of hand is unknown
- Creator field refers to culture of creation, not an individual
- If creator is missing in contributed data, map from Culture



Example: When creator is qualified

Attribution qualifiers

Catalog Level: item

Class: decorative arts ▪ furniture **Work Type:* side chair

Title : Side chair

Current Location: Metropolitan Museum of Art (New York, New York, USA) *ID:* 62.16

Creator Display:

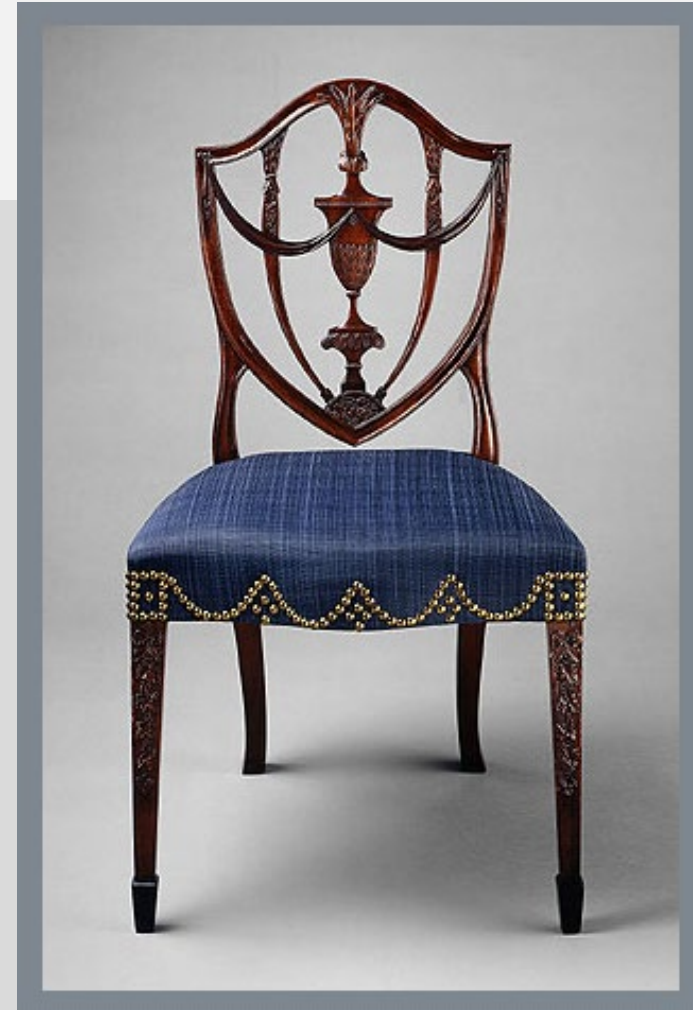
attributed to Samuel McIntire (American, 1757-1811)

Role: designer

Person: McIntire, Samuel

Qualifier: attributed to

- Use an attribution qualifier if the attribution to a given named artist is not certain
- Link to the named artist



Example: When to include style and culture

- May record Style and also Culture
- May specify "Type" if desired

Style and culture

Catalog Level: component
Class: manuscripts Work Type: illumination
Title: A Crowd Watches a Flying Pelican Luring Smaller Birds into Its Large Beak
Creator: Shaykh Azari
Creation Date: 1613
Current Location: Walters Art Museum (Baltimore, Maryland)
Accession No. W.652.162A
Credit Line: Acquired by Henry Walters

Style etc.: Safavid *Type:* dynasty

Culture: Islamic

Dynasty: Safavid
Reign: Shah Abbas (1585-1628)
Creation Location: Afghanistan
Ownership/Collection History: Henry Walters, Baltimore [date and mode of acquisition unknown]; Walters Art Museum, 1931, by bequest.



Unknown and Undetermined

- What should the cataloger do if core information is limited or not available?
- When an element is indicated as required, this means that the element must be included
- However, it is recognized that occasionally data for any element may be missing during the cataloging process

Unknown and Undetermined

- Knowing that information is unknown or undetermined is important to users, particularly for the required core fields
- Values for required fields must be supplied, even when the information is unknown or uncertain
- When the information is unknown at the time of cataloging, include an appropriate designation indicating the state of knowledge or availability of information
- For fields that are not core, the cataloger may leave the field blank or null, or include *unknown* etc. if so desired by the cataloging institution
- Note that null values will not be displayed to end-users and will likely be omitted in transfer of data; values such as *unknown* should be include in data exchanges and publications of the data

Knowable vs. Unknowable

Knowable vs. Unknowable

- When information is unavailable at the time of cataloging, the cataloger may use values such as unknown, unavailable, undetermined, or not applicable, provided documentation or context explains to the user the meaning of these words for the given field
- For required fields and in other contexts, including such values is better than omitting the information entirely, particularly when the possibility exists for the record to be enhanced in later passes at cataloging, or to provide clarity in retrieval and research
- Has the cataloging institution simply forgotten to include the information?
- Or has the field been considered, but at this time the information is not available?
- Including such values for unavailable information clarifies the situation for users, while a blank field does not

Knowable vs. Unknowable

- Knowable information

- For information that is knowable but simply unknown by you, always use a more general term or omit the information
- When the lack of knowledge is due to your ignorance regarding the issue, do not use terms such as "probably" or "perhaps" because this implies that scholars are uncertain of this information

- Debated information

- For information that is unknowable because scholars disagree because the historical or archaeological information is incomplete or interpretation of the information is debated, you may use terms such as "probably" or "perhaps" to explain the ambiguity or uncertainty in a Display Date or Scope (Descriptive) Note

Knowable vs. Unknowable

- In various fields, rules regarding how to deal with unknown information, uncertainty, and ambiguity may differ
- One of the most common ways of dealing with such information is to state the vagary in a display field, and then to index with all authoritative, probable terms for that display
- Another common method, for fields without accompanying display fields, is to index using a broader term that is known to be correct, rather than a narrow term that could be incorrect

Using the hierarchy for indexing

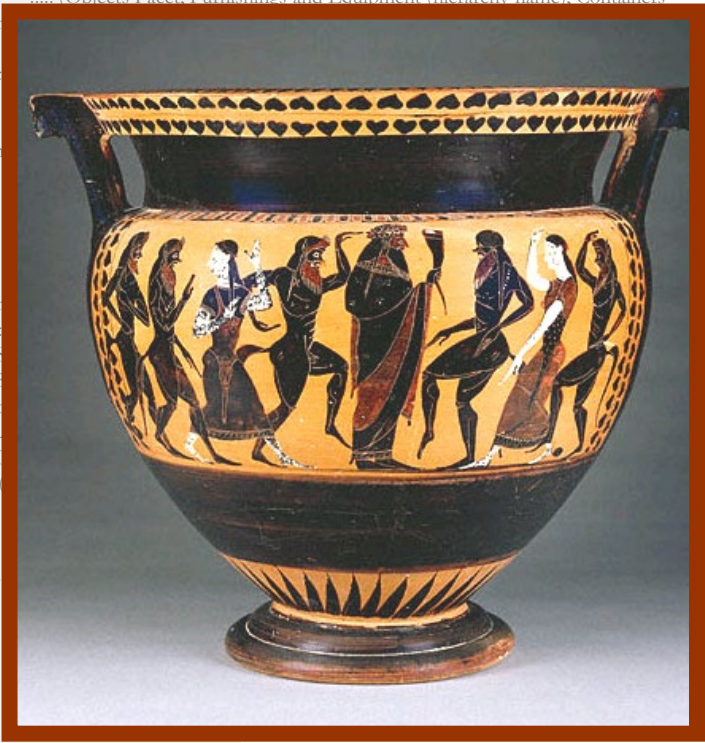
broader terms

Containers Hierarchy

- ...containers
-<containers by form>
-**vessels**
-alembics
-askoi
-basins
-louteria
-beakers (vessels)
-boilers (vessels)
-bottles
-<bottles by form>
-<bottles by function>
-bowls (vessels)
-covered bowls
-buckets (vessels)
-cage-cups
-cauldrons
-craggans
-crocks
-dinoi
-ewers
-aquamaniles
-face vessels

narrower terms

Catalog level: item Class.: vases
 Work Types:
 column krater [300198859] (preferred)
 (Objects Facet, Furnishings and Equipment (hierarchy name), Containers
 Titles:
 Attic Black-Figure Column Krater (preferred,C,U,RP,English-P,U,U)
 Mixing Vessel with Dionysos and His Followers (C,U,English,U,U)
 (hierarchy name), containers (receptacles), <containers by form>, vessels (containers),
 kraters)
 krater [300198855]
 (Objects Facet, Furnishings and Equipment (hierarchy name), Containers



- Index with a specific narrower term only if information is supplied by sources
- if unknown, use a broader term, even "vessel"

Using the hierarchy for indexing

- Index with a specific narrower corporate body only if information is supplied by sources
- if unknown, use a broader entity "Gobelins"

Catalog level: item Class.: textiles Work type: tapestry
Titles: Tapestry: Le Cheval rayé from Les Anciennes Indes Series (preferred,C,U,English-P,U,U)
Tapestry: The Striped Horse from The Old Indies Series (C,U,DE,undetermined,U,U)
Catalog Level: item

Creator Display:

Woven at Gobelins Tapestry Manufactory; after cartoon by Albert Eckhout and Frans Post, painters

Creation Date: about 1692 - 1730
Creator Display: Woven at Gobelins Tapestry Manufactory; after cartoon by Albert Eckhout and Frans Post, painters [preferred] IBCMB



ULAN

Gobelins

- Gobelins Furniture Manufactory
- Gobelins Marquetry Studio
- Gobelins Pietra Dura Studio
- Gobelins Metalwork Studio
- Gobelins Engraving Studio
- Gobelins Silversmiths' Studio
- Gobelins Painting Studio
- Gobelins Sculpture Studio
- Gobelins Tapestry Manufactory
- Gobelins Dye Works

index with

Using associative relationships for indexing

ULAN

Names:

Richard Meier & Partners (**preferred**, **display**, **V**)

Richard Meier and Partners (**V**)

- Index with a specific member of the firm only if you know who made the drawing
- if unknown, use a broader reference to the firm



The Atheneum
New Harmony, Indiana
1975 - 1979



Associative Relationships:

members are

Richard Meier

Michael Palladino

James R. Crawford

Bernhard Karpf

Reynolds Logan



3-D model of Douglas House from
Great Buildings online; photo of
Atheneum, New Harmony, IN, Avery
Fischer Hall, New York, from
<http://www.richardmeier.com/>

Disagreement among Sources

- Know your sources
- When two sources disagree, prefer the information obtained from the most scholarly, authoritative, recent source

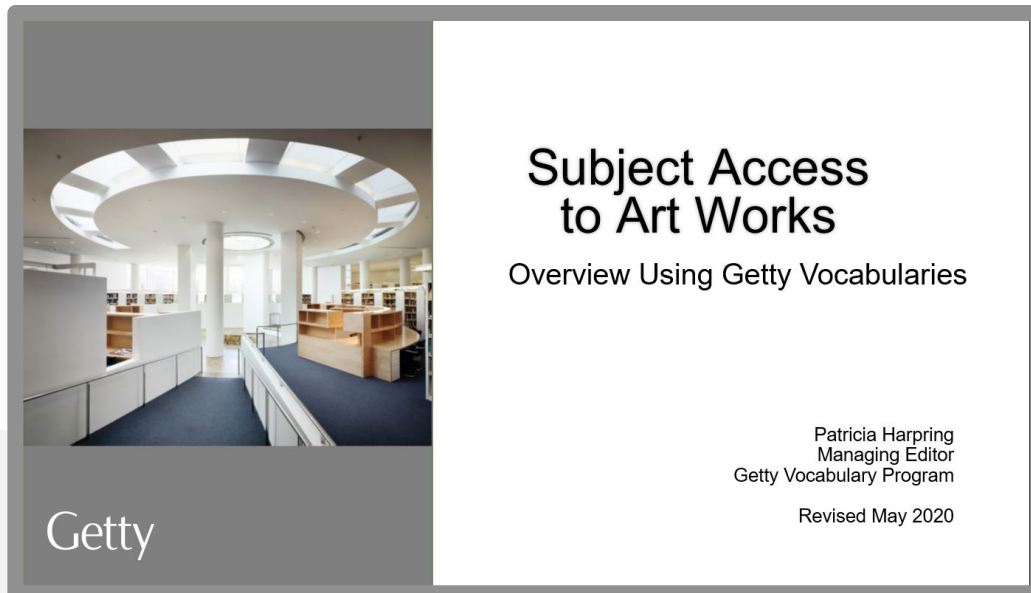


Subject Access to Art Works

Indexing Subject

- Indexing subject matter may use all Getty Vocabularies
- Subject access is discussed in detail in a separate training module
- Please review this presentation:

http://www.getty.edu/research/tools/vocabularies/subject_access_for_art.pdf



What are General Subject and Specific Subject?

- **General Subject:** Required to include one general subject
- Controlled by an extensible list, not directly linked to Getty Vocabularies but mapped to AAT
- Purpose is to place the depicted subject in a broad category; count nouns are plural

- **Specific Subject:** Optional but highly recommended
- Add terms to describe subject as specifically as possible
 - However, index only the most important characteristics or topics
- Controlled by AAT, TGN, ULAN, CONA, and the IA
- Purpose is to index subject and allow retrieval using Getty Vocabularies
- May repeat same concept as in General Subject, but more specifically if possible
- Avoid repeating the Work Type if possible

- You may instead use one repeatable Subject field, if your system so dictates; in this presentation, extrapolate useful information for your situation
- You may instead link to Iconclass, LOC Authorities, etc., if these terms are already incorporated in their local data

General Subject

General Subject: Extensible list, mapped but not linked to AAT.

For definitions see the Scope Note for the term in the AAT.

- Required to include one general subject terms from the extensible list
- Recommended to also include specific subjects as warranted, using AAT, TGN, ULAN, IA, and CONA itself for works depicted in works

Code	Description
30001	undetermined
30002	not applicable
30101	advertising and commercial
30102	allegory
30103	animals
30104	apparel
30105	architecture
30106	landscape architecture
30111	activity
30201	botanical
30205	biographical
30301	cartographic
30302	ceremonial objects
30303	cityscapes
30305	calligraphic
30306	costume
30401	didactic and propaganda
30405	documentary
30411	decorative arts
30498	engineering
30501	events
30600	fine arts
30601	funerary
30605	fantasy
30611	furnishings
30612	furniture
30701	genre
30710	games and sports
30801	history and legend
30802	human figures
30851	humor and comedy
30901	interior architecture
30902	installation
30906	industry
31201	landscapes
31202	literary
31301	machines and equipment
31302	military
31304	marines
31310	monuments and memorials
31320	musical
31401	nonrepresentational art
31402	figurative art
31403	abstract art
31404	conceptual art
31405	numismatic
31406	philatelic
31411	natural objects
31412	natural phenomena
31413	agriculture
31414	labor
31501	utilitarian objects
31502	object components
31511	ornament
31551	documents
31552	law
31553	science
31554	philosophy
31601	performance art
31602	portraits
31605	performing arts
31701	violence
31801	religion and mythology
31901	seascapes
31902	still lifes
31903	sites
31910	satire
31922	structures
31925	symbols
31935	text
31936	textile
31938	travel
31961	various subjects
31965	found objects
31967	time-based works

Specific Subject is controlled by AAT, ULAN, TGN, CONA, and IA

Power of the synonyms and associative relationships, and biography

[ULAN ID 500312828](#)

Names

- *Pinceloup de la Grange, Magdaleine*
- *Parseval, Magdaleine*

Related Person

spouse of ... Pinceloup de la Grange, Charles-François

[AAT ID 300265960](#)

Terms

- *Felis domesticus* (species)
- domestic cat (species)
- house cat (species)
- *Felis catus* (species)

CONA ID 70000215 Catalog Level: item

Class: paintings Work Type: painting

Title: Magdaleine Pinceloup de la Grange

Creator Display: Jean-Baptiste Perroneau (French painter, ca. 1715-1783)

*Current Location: J. Paul Getty Museum (Los Angeles, California, USA) ID: 84.PA.664

General Subject: portraits

Specific Subject:

- Pinceloup de la Grange, Magdaleine (French aristocrat, 18th century)
- *Felis domesticus* (species)
- single-sitter portrait

of *Felis catus*.
Description: The sitter was from the provincial French region of Orléans, but the artist imbued her with Parisian sophistication. The cat she holds is known as a "Charron cat," description of which first appeared in 18th-century France. While some at the time valued the breed as a companion animal, it was primarily bred for its fur.
Note: Source: J. Paul Getty Museum online. (accessed 10 February 2009).
Related Work Relationship type (term): portrait of
[link to world] Charles-François Pinceloup de la Grange, Jean-Baptiste Perroneau, painting, 1747,84.PA.664

- By linking to AAT, you have the power of synonyms, the hierarchy, associative relationships, and other links to power retrieval on Subject
- By linking to ULAN, you have the power of synonyms, biographical information, associative relationships, hierarchy for corporate bodies, and other links that may aid in retrieval



Specific Subject is controlled by
AAT, ULAN, TGN, CONA, and IA
Power of synonyms, hierarchy,
relationships, coordinates, historical

- TGN for subjects that are geographic places; in turn linked to GIS and other geo-data
- CONA for subjects that are architecture or other works, includes dates, materials, patrons, etc; here an important portrayal of critical built work as it looked in 1400s

[TGN ID 7002473](#)

Names

- İstanbul
- Constantinople
- Konstantinopel
- Κωνσταντινούπολις
- Kōstantīniye
- قسطنطينية

Related Places

located onSilk Road

Coordinates

Lat: 41.0110 Long: 28.9578

Hierarchies

[parents = Turkey, Ottoman Empire, Byzantine Empire, etc.]

CONA: ID 700008633

Class.: manuscripts maps

Work Type: cityscape map

Titles: Map of Constantinople

Karte von Konstantinopel

Creator: Cristoforo Buondelmonti Date: 1422

Current Location: Bibliothèque nationale de France
(Paris, France)

Dimensions 25.4 x 16.4 cm one of 66 leaves

General Subject:

cityscapes architecture

Specific Subject:

- Constantinople (inhabited place)
- Hagia Sophia (built work)



Specific Subject is controlled by AAT, ULAN, TGN, CONA, and IA

- The Getty Iconography Authority contains records for named events, religious/mythological iconography, fictional characters and places, themes from literature
- Linked to the other Getty Vocabularies



AAT ID 300191778

Terms

- skeleton [English]
- beendergestel [Dutch]
- esqueleto [Spanish]
- squelette [Italian]
- 骨架 [Chinese]

IA ID 1000045

Names

- *Xibalba*
- *Place of Fear*

General Subject:

- religion and mythology [*General Subject ID 31801*]

Specific Subjects:

- Baby Jaguar (Maya character) [*IA 901002211*]
- Chahk (Maya deity) [*IA 901002210*]
- Witz creature (Maya creature) [*IA 901002213*]
- dog (species) [*AAT 300250130*]
- firefly [*AAT 300438629*]
- skeleton (animal component) [*AAT 300191778*]
- ax (weapon) [*AAT 300024664*]
- altar [*AAT 300003725*]
- rain [*AAT 300055377*]
- Life and Death [*IA 901002294*]
- Xibalba (Maya underworld) [*IA 1000045*]



Sample Scenarios

Sample Scenario 1

- **Issue:** If two authoritative sources disagree on the date of creation of a work (one prefers ca. 1510, but another of equal authority prefers ca. 1525), what should you do?
- **Resolution:** This dispute may be referenced in a display date: created ca. 1510 or ca. 1525, and explained more fully in the Descriptive Note
- Then the dates for retrieval on creation date should encompass the full range of possible dates, also estimating a range of a few extra years to include the uncertainty of ca.:
Earliest: 1505; Latest: 1530
- NB: If the work is in the possession of a repository, the opinion of the repository should take precedence over varying opinions by outside scholars; however, the full scholarly debate should be represented as possible, with methods of doing so varying dependent upon the field

Sample Scenario 2

- **Issue:** If the available authoritative information indicates a work is made of metal, but the cataloger consulting an illustration feels it looks like silver, what should she do?
- **Resolution:** The cataloger should never rely upon their own judgment with such lack of substantiating evidence
- The cataloger should index the material as the general *metal* rather than risking the introduction of erroneous more specific information

Sample Scenario 3

- **Issue:** If one source calls the work by an anonymous artist *French* and a second source calls it *Flemish*, what should you do?
- **Resolution:** For display, the cataloger should not necessarily state that the work is *French* or *Flemish* in a note field, because this implies that scholarship agrees it could be either
- Instead, the cataloger should state the cultural origin of the work based on the most reliable, recent sources
- Perhaps with further investigation, the cataloger will discover that although it was in the 19th century considered French, modern scholars agree it is Flemish
- If indeed modern scholars differ on their opinions and are equally divided, then the cataloger may indeed state *French or Flemish*
- In either case, even when the work was formerly known as French, the cataloger should **index both** French and Flemish for retrieval

How to Find Terms in the Getty Vocabularies

How to find terms in the Getty Vocabularies

- Use online search (or Vocabularies as integrated into your system). Search for the term you need.
- Before choosing a term, be certain that the term is defined as you intend. Look at the Scope Note.
- Getty search is set by default to search for keywords. If you get too many results and want to search for an exact match, use quotes [e.g., “paint”]
- If no appropriate term is returned, try broadening the search using a wild card (asterisk) [e.g., silica*].
- Use Boolean operators (OR or AND) to get a smaller set of terms from which to choose [e.g., paint AND oil].
- You may combine Boolean operators logically [e.g., (silica* OR vitre*) AND paint]
- Each online Vocab search also allows searching in other fields, not just on the term field. Try looking in another field to get a set of results from which to choose. E.g., in TGN, look for **place type** “archaeological site” and **nation** “Egypt” instead of searching by term/name

How to find terms in the Getty Vocabularies

- If still no appropriate term is returned, try looking for a similar concept or a presumed parent concept.

Go to that concept in the hierarchy, and scan the siblings and broader contexts in the hierarchy for an appropriate term.

E.g., if you need the term for a particular type of paint, look at the children under *paint*.



How to find terms in the Getty Vocabularies

- See the search tips on each Vocab's site

Search the TGN [? Help](#)

Find Name or ID: [Search](#)

Place Type: [Clear](#)

[Lookup](#)

Nation:

[Lookup](#)

[Pop-up Search](#) [Browse the TGN hierarchies](#)

[Copyright information](#)

Search Tips

For the Find Name field, you may use **AND** and **OR** [e.g., 1) san carlos, 2) carlos OR charles, 3) carl* OR charl*, 4) san AND carlos, 5) carlos AND (san OR saint), 6) (carlos OR charles) AND (san OR saint)] Boolean operators must be in all caps (AND and OR). Wildcard is the asterisk (*); right truncation only. To find an exact match rather than a key word, use quotes [e.g., "carlos"]. There is an implied AND between the Find Name, Place Type, and Nation fields.

AAT

Search Tips

For the Find Term or Note field, you may use **AND** and **OR** (all in upper case) [e.g., 1) windsor chairs, 2) chairs OR rockers, 3) chairs OR rockers OR armchairs, 4) bow-back AND windsor, 5) windsor AND (rockers OR chairs), 6) (windsor OR boston) AND (rockers OR chairs)]. Wildcard is the asterisk (*); right truncation only. To find an exact match rather than a key word in the Find Term field, use quotes [e.g., "chairs"]. If you wish to search the term and note together, click on the buttons for AND or OR.

ULAN

Search Tips

For the Find Name field, you may use **AND** and **OR** [e.g., 1) eldon garnet, 2) garnet OR carnet, 3) garnet OR carnet OR karnette, 4) eldon AND carnet, 5) eldon AND (garnet OR carnet), 6) (eldon OR elton) AND (garnet OR carnet)]. Boolean operators must be in all caps (AND and OR). Wildcard is the asterisk (*); right truncation only. To find an exact match rather than a key word, use quotes [e.g., "carlos"]. There is an implied AND between the Find Name, Role, and Nationality fields.

CONA

Search Tips

Use any of the 10 fields in this form to search for CONA records. Multiple terms may be entered in most fields in the form. Assume Boolean "or" between values within one field and Boolean "and" between fields. You may type search terms directly into the form. Alternatively, use the "Lookup" option to find terms in AAT, TGN ULAN, or IA. Choose terms and click "Return to CONA. In a Lookup search window, use Boolean uppercase OR or AND.

IA

Search Tips

Currently in IA, searches may be made only on title. (We plan to allow searching on additional fields via this form in the future.) Keyword searching is the default. If you wish to search for an exact match, use quotation marks [e.g., "Buddha"]. Use Boolean uppercase OR or AND [e.g., Life AND Saint]. The wildcard is asterisk (*) [e.g., Africa*].

Indexing Exercises

1. Find terms in AAT to index display materials and techniques

Title: Vase of Flowers
Creator: Jan van Huysum (Dutch painter, 1682-1749)
Current Location J. Paul Getty Museum (Los Angeles, CA); 82PB:70



Display Materials & Techniques

oil on panel

Index:

AAT term	AAT ID

Which homograph to use? “oil”
in such a materials statement is
short for “oil paint”

oil (organic material)

(organic material, <materials by composition>, ... Materials (hierarchy name)) [300374933]

oiling

(<processes and techniques by specific type>, Processes and Techniques (hierarchy name)) [300374933]

oil (process)

oil paint (paint)

(<paint by composition or origin>, paint (coating), ... Materials (hierarchy name)) [300015050]

oil (paint)

Display Materials & Techniques

oil on panel

Index:

AAT term	AAID
oil paint	300015050
panel (wood by form)	300014657

curtain walls (fortification elements)

(defensive walls, <defensive walls and defensive wall elements>, ... Materials (hierarchy name)) [300002504]

panel ()

panel (wood by form)

(<wood by form or function>, wood (plant material)) [300014657]

panel (photograph size)

(card photographs sizes, <size for photograph format>, ... Materials (hierarchy name)) [300246102]

panels (meetings)

(meetings, events (activities), Events (hierarchy name)) [300014657]

panels (surface components)

(surface element components, <surface element components>, ... Materials (hierarchy name)) [300069079]

panel (surface component)

panels (costume components)

To find a smaller number of results for panel, use quotes to get an exact match rather than keywords [“panel”]. Which homograph is correct?

2. Find terms in AAT to index display materials and techniques

Title: A mandarin paying a visit of ceremony
Creator Display: Fox, Angus, after drawing by Thomas Allom; published by Fisher, Son and Company
Current Location: Getty Research Institute, Special Collections (Los Angeles, CA)

Display Materials & Techniques

steel engraving, hand colored

Index:



AAT term	AAT ID

Which homograph to use? Best to use process, not “visual work” which would be **work type**, not **materials and technique**

Display Materials & Techniques

steel engraving, hand colored

Index:

steel engraving (printing process)

(engraving (printing process), intaglio printing processes (name)) [300190536]

engraving, steel (printing process)

steel-engraving (printing process)

steel engravings (visual works)

(engravings (prints), intaglio prints, ... Visual and Verbal) [300041363]

engravings, steel (visual works)

steel engraving (visual work)

AAT term	AAT ID
steel engraving	300190536
hand coloring	300133555

So you have the techniques (processes), what about medium and support, which are not mentioned here? Add *ink* and *paper*? Recommended, **but only if** you are certain, based on other documentation. To find all works on paper, *paper* must be indexed.

3. Find terms in AAT to index display materials and techniques

Title/Name: Empire State Building
Creator Display: William F. Lamb for Shreve, Lamb and Harmon
Location: New York (NY)
Address Note: 40°44'54.36"N 73°59'08.36"W ; 350 5th Ave, New York, NY 10118



Display Materials & Techniques

steel frame clad in Indiana limestone and granite, with the mullions lined in shiny aluminum; spandrels are sandblasted so that tone matches windows, visually creating vertical striping

Index:

AAT term	AAT ID

The indexing terms may be more or fewer than noted in the display statement.
How exhaustive should you be? What is necessary for retrieval for your project? How much time do you have to complete the project?

Display Materials & Techniques

steel frame clad in Indiana limestone and granite,
with the mullions lined in shiny aluminum; spandrels are
sandblasted so that tone matches windows,
visually creating vertical striping

Index:

AAT term	AAT ID
steel frame construction	300015341
Indiana limestone	300011321
granite (rock)	300011183

5. Find people in ULAN to index Creator Display

Title/Name: Hall of the Sea of
Wisdom, the (temple (building))
Location: Beijing (China)



Creator Display

unknown Chinese architect,
under Emperor Qianlong (1711-1799)

Index:

ULAN	ULAN ID	Role: AAT term	AAT ID

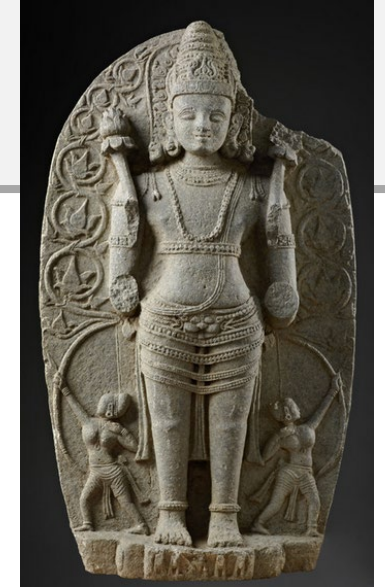
Even if the creator is unknown, it should be indexed rather than being left blank. Creator indexing is a core field and should always have a value

Creator Display

unknown Chinese architect,
under Emperor Qianlong (1711-1799)

Index:

ULAN	ULAN ID	Role: AAT term	AAT ID
unknown Chinese	500125222	architect	300024987
Qianlong, Emperor of China	500372572	patron	300115251



5. Find repository in ULAN and geographic location in TGN to index Locations

Location information

Los Angeles County Museum of Art; Purchased with funds provided by Mr. and Mrs. Edgar G. Richards (M.86.94.1); created in India, Karnataka or Andhra Pradesh

Index current location:

ULAN	ULAN ID	Repository Number

Index creation location:

TGN	TGN ID

For works in repositories, include the repository ID for retrieval, if possible
For uncertain creation location, include both possibilities for indexing

Location information

Los Angeles County Museum of Art; Purchased with funds provided by Mr. and Mrs. Edgar G. Richards (M.86.94.1); created in India, Karnataka or Andhra Pradesh

Index current location:

ULAN	ULAN ID	Repository Number
Los Angeles County Museum of Art	500217563	M.86.94.1

Index creation location:

TGN	TGN ID
Karnataka (state) (India)	1001882
Andhra Pradesh (state) (India)	1001828

6. Index Subject using all Vocabularies as necessary

Descriptive note

Crite thought of himself as an artist-reporter whose assignment was to capture the daily lives of ordinary people. His skill as an acute observer of American life is apparent in *School's Out*, which shows dozens of children leaving the annex of Everett elementary school in Boston's South End at a time when boys and girls were taught separately. Although Crite acknowledged that *School's Out* may reflect a romanticized view, it also presents a universal statement about community, stability, and the bonds of family life. (AAM)

Title *School's Out*

Creator Display: Allan Rohan Crite (American painter, 1910-1907)

Creation Date 1936

Current Location Smithsonian American Art Museum (Washington, DC) 1971.447.18



General Subject	ID

AAT	AAT ID

ULAN	ULAN ID

TGN	TGN ID

General Subject	ID
genre	30701

AAT	AAT ID
school	300266108
children	300025945
community (social issue)	300435377
family life	300435378

ULAN	ULAN ID
Everett Elementary School (Boston)	500487303

TGN	TGN ID
Boston (Massachusetts)	7013445

7. Index Subject using all Vocabularies as necessary

Title: Vessel with Mythological Scene
Creator Display: Metropolitan Master
Current Location: Metropolitan Museum of Art (New York, New
York, USA) ID: 1978.412.206

Descriptive note

This cylindrical drinking cup is the magnum opus of the Maya vase painter known as the Metropolitan Master. The overarching theme of this vessel is the necessary interaction of life-giving rains and rotting death, the contrasts needed to produce life. The young rain god, named Chahk. In his right hand, he grasps the wooden handle of a shining stone axe, and his left hand holds an animate stone. The rain god actively engages with a giant agnathus creature, likely the representation of a witz, the spirit of a mountain, as his leg crosses in front of the upper lip while his left arm passes behind. The mountain monster has a feathered eyelid present on crocodilians in Maya art. Most significant about the zoomorphic mountain is the character reclining on top of it: the supernatural baby jaguar. The face of the jaguar baby character is clearly supernatural and contrasts sharply with Chahk's more human-like visage. Almost touching the baby jaguar is a frightening creature of the night, with a skeletal head marked with bone sutures and two extruded eyeballs. This is likely a death god, a denizen of the Maya underworld Xibalba, who plays a role in this myth of the birth of the baby jaguar. (Met)



7. Index Subject using all Vocabularies as necessary

Title: Vessel with Mythological Scene
Creator Display Metropolitan Master
Current Location: Metropolitan Museum of Art (New York, New
York, USA) ID: 1978.412.206



General Subject	ID

AAT	AAT ID

IA	IA ID

General Subject	ID
religion and mythology	31801

AAT	AAT ID
death gods	300435379
underworld	300343823
rain	300055377
death	300151836
skeleton	300191778

IA	IA ID
Chahk (Maya deity)	901002210
baby jaguar (Maya character)	901002211
Xibalba (Maya legendary place)	901000045

Thank you.

Patricia Harpring
Managing Editor
Getty Vocabulary Program

pharpring@getty.edu
vocab@getty.edu