

July 20, 2022

To Whom It May Concern,

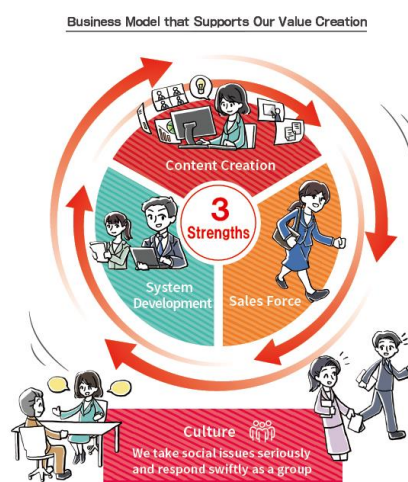
Company Name: Insource Co., Ltd.
Representative: Takayuki Funahashi
Representative Director, President and CEO
(Code number: 6200, Prime Market of the
Tokyo Stock Exchange)

**Insource Announces Release of Insource Group Integrated Report 2021 in English
-About the business model that supports value creation and future growth strategy**

Insource Co., Ltd. (hereafter referred to the Company), which supports organizations to resolve issues through the power of Training and IT, announces that we have released our first integrated report, the "Insource Group Integrated Report 2021 (Total 82 pages) in English, as Japanese version was released in May 2022.

The report describes our value creation process, strengths of our management structure, and future growth strategy. The purpose of this report is to help you understand our business model, which is the source of our sustainable competitive advantages, and the management structure that allows us to respond to change with speed, and to expand sales and reduce costs at the same time. To make it easy to understand, the report includes illustrations and QA-style explanations which are created by our in-house designers,

We hope that we can strengthen our dialogue with our stakeholders through this report. Under our corporate philosophy of "Create a society where all people can enjoy the work," we will strive to enhance our corporate value over the long term through rapid corporate activities and proactive investor relations activities.



Click here for Insource Group Integrated Report 2021

https://www.insource.co.jp/resource/pdf/ir/integratedreport2021_eng.pdf

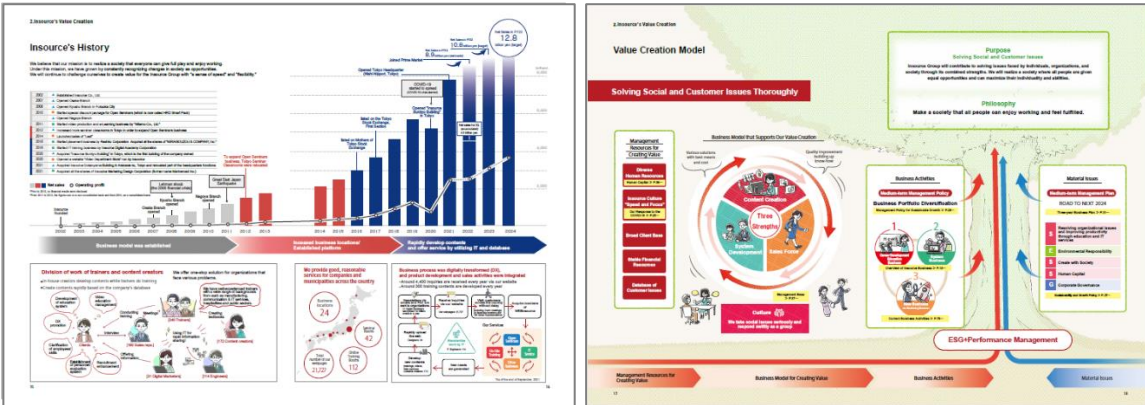
<Main contents of the Insource Group Integrated Report 2021 >

1. Message from CEO -To All Stakeholders

Our CEO, Takayuki Funahashi, talks about the company's growth, strengths, performances, and medium or long terms goals for the future.

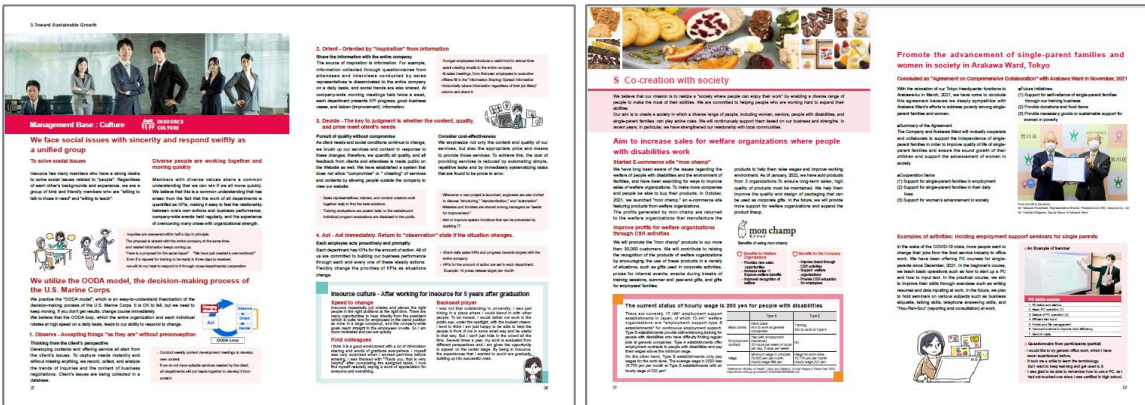
2. Insource Value Creation - How Have We Grown?

The report describes the company's history, value creation process, current business structure, and service features.



3. Toward Sustainable Growth - How to Keep the growth

It describes our management policy, three-year business plan, and sales strategy for sustainable growth. The report also explains the management bases that enable our growth, which are Culture, Content Development Capability, System Development Capability, and Sales Force. The report presents our ESG initiatives (Environmental responsibility, Create with Society, Human Capital, and Corporate Governance).



4. Current Business Activities

The report describes current business activities, including non-financial information, KPI changes, as well as current issues and recent topics.

We will continue to proactively disclose information in future.

END

【Inquiries】 Insource Co., Ltd. <https://www.insource.co.jp/en/ir/index.html>

(For media interviews / PR / Service)

CEO Office (PIC: Asai & Ishiwata)

Send an email at info_ir@insource.co.jp