



UNIVERSITY LIBRARIES

LIBRARY ADMINISTRATION
As of 7/1/2024

L4 = Librarian IV

Jennifer King Rice, PhD
Sr. VP & Provost, Academic Affairs

Daniel Mack
Acting Dean of Libraries, L4

Judi Kidd
Manager, Dean's Office
& Central Administration
Team

CAT

Kenna Barrett, PhD
Chief Development Officer

Nneka Chisholm
Diversity, Equity & Inclusion
Officer

Terry Owen
Faculty Services Liaison

Kate Maloney
Director, SCOT
Strategic Communication
& Outreach

SCOT

David Dahl
Associate Dean, DST
Digital Services & Technology

ITFO

DPI

SSDR

CLAS

Daniel Mack
Associate Dean, CSS
Collection Strategies & Services

CMS

PRESERVATION

SCUA

OPEN
SCHOLARSHIP
SERVICES

CDS

Gary White, PhD
Senior Associate Dean, RAS
Research & Academic Services

USER
SERVICES &
RESOURCES
SHARING

RESEARCH &
LEARNING

DIRECTOR,
PRIDDY
LIBRARY
SHADY
GROVE

Mary Fortier
Assistant Dean, ADS
Administrative Services

HUMAN
RESOURCES

DIVERSITY, EQUITY &
INCLUSION

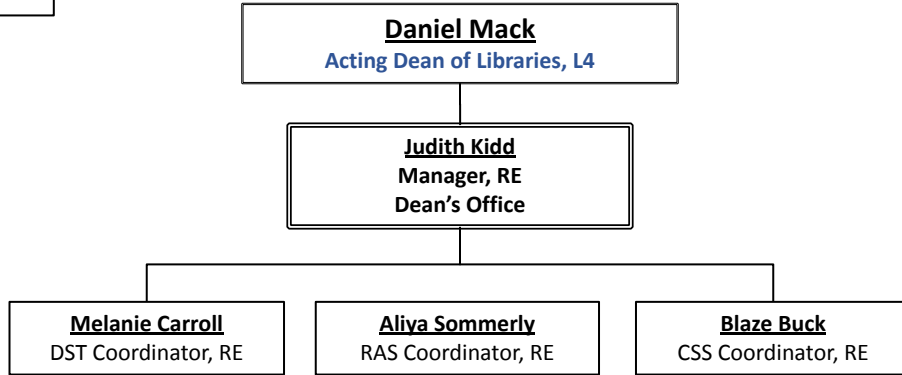
BUSINESS
SERVICES

ORGANIZATIONAL
DEVELOPMENT &
LEARNING



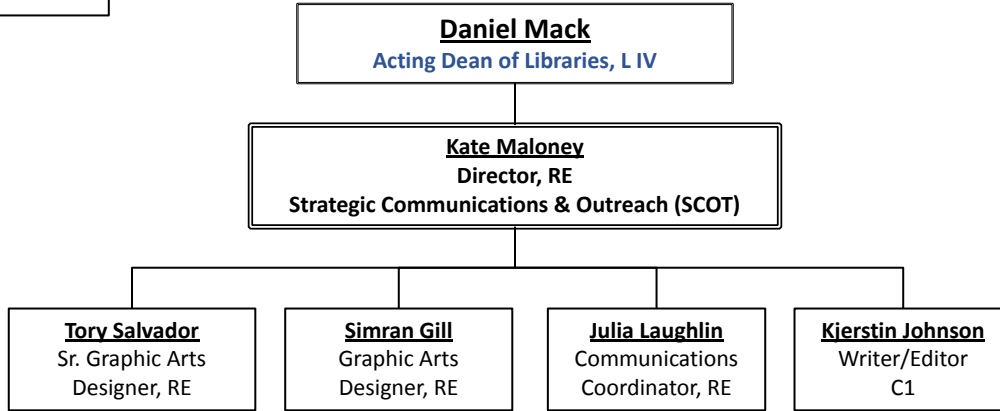
LIBRARY ADMINISTRATION: Central Administrative Team
As of 7/1/2024

L4 = Librarian IV
RE = Regular Exempt



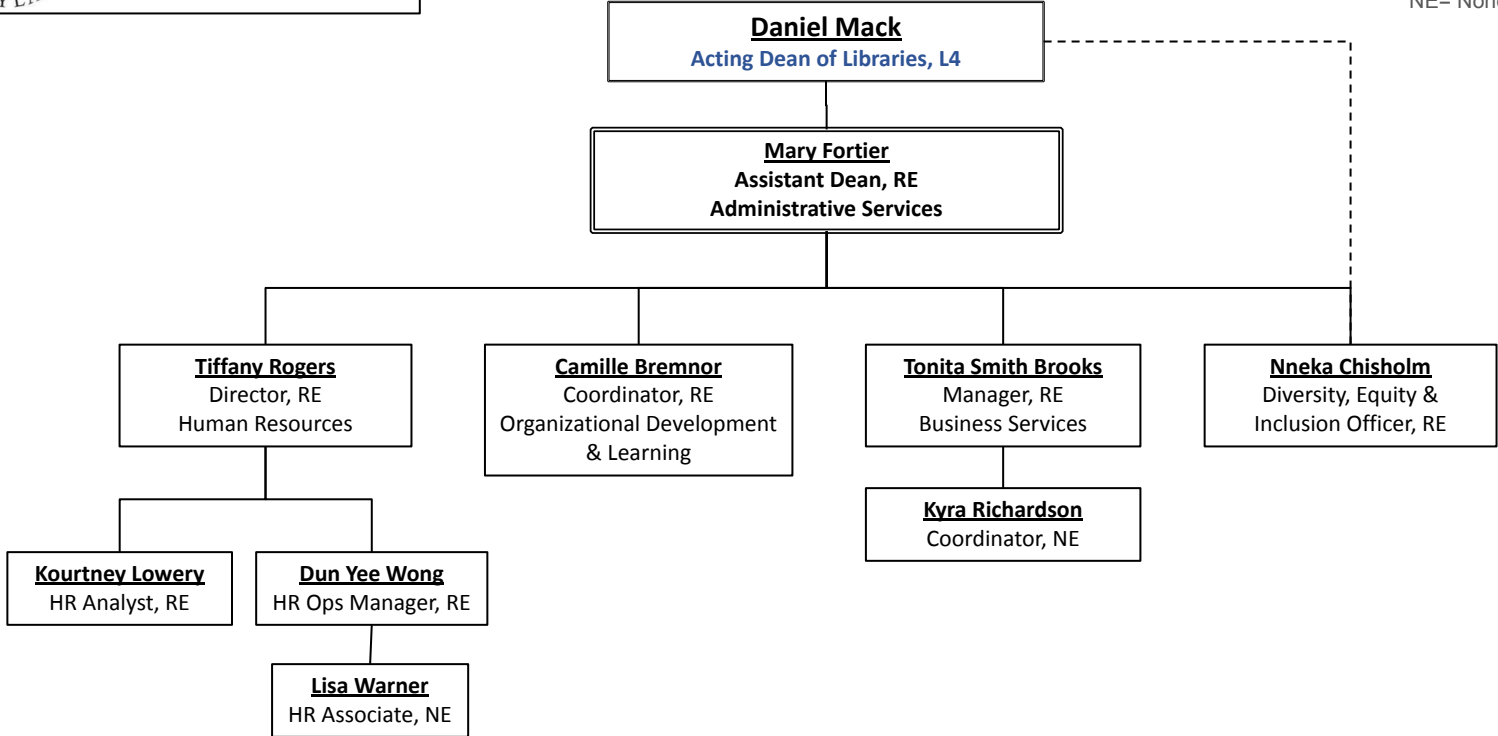


L4 = Librarian IV
RE = Regular Exempt
C1 = Contingent 1





L4 = Librarian IV
RE = Regular Exempt
NE = Nonexempt Regular





UNIVERSITY LIBRARIES

Daniel Mack
Acting Dean of Libraries, L4

DIGITAL SERVICES & TECHNOLOGIES
As of 7/1/2024

Melanie Carroll
DST Coordinator

David Dahl
Associate Dean, DST, L3
Digital Services & Technologies

L4 = Librarian IV
L3 = Librarian III
RE= Regular Exempt
PTK = PTK Faculty

Kate Dohe
Director, L4
Digital Programs & Initiatives

Chamisa Carson
Manager, RE
IT & Facilities Operations

Ben Wallberg
Senior Manager, RE
Software Systems
Development &
Research

Consortial Library
Applications Support
(CLAS/USMAI*)
*See USMAI p. 9

- Web & Discovery Services
- Systems Support
- Digital Library Applications
- Digital Content Lifecycle Management

- Facilities Operations
- Desktop Management
- Helpdesk Support
- IT Procurement

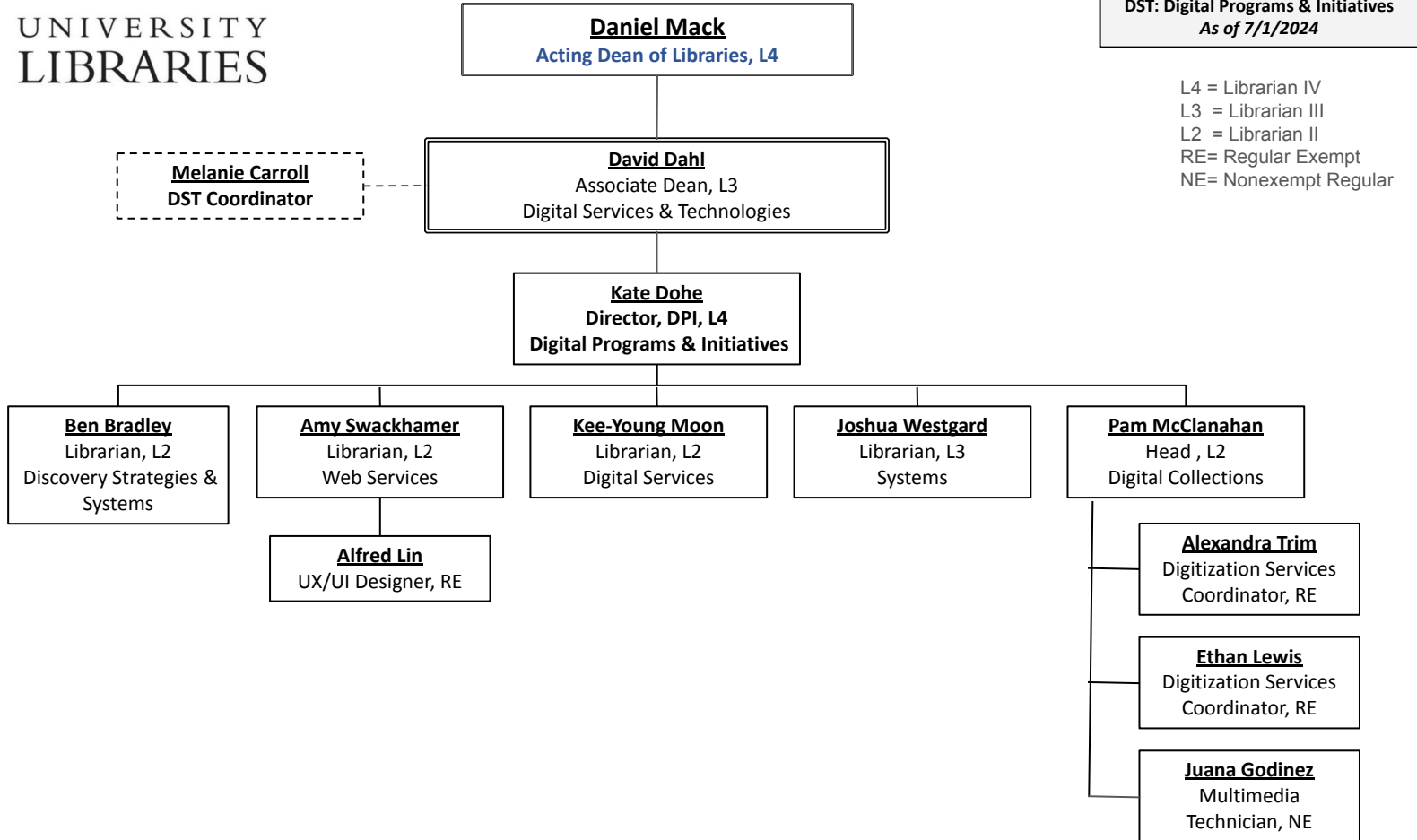
- Software Development
- DevOps
- Server Administration

- Joseph Koivisto**
Head, L3
Consortial Digital Initiatives
- Application Development
 - Digital Initiatives

- MD Galvin**
Head, PTK
Consortial Library Systems & Operations
- System Support
 - Application Management & Configuration

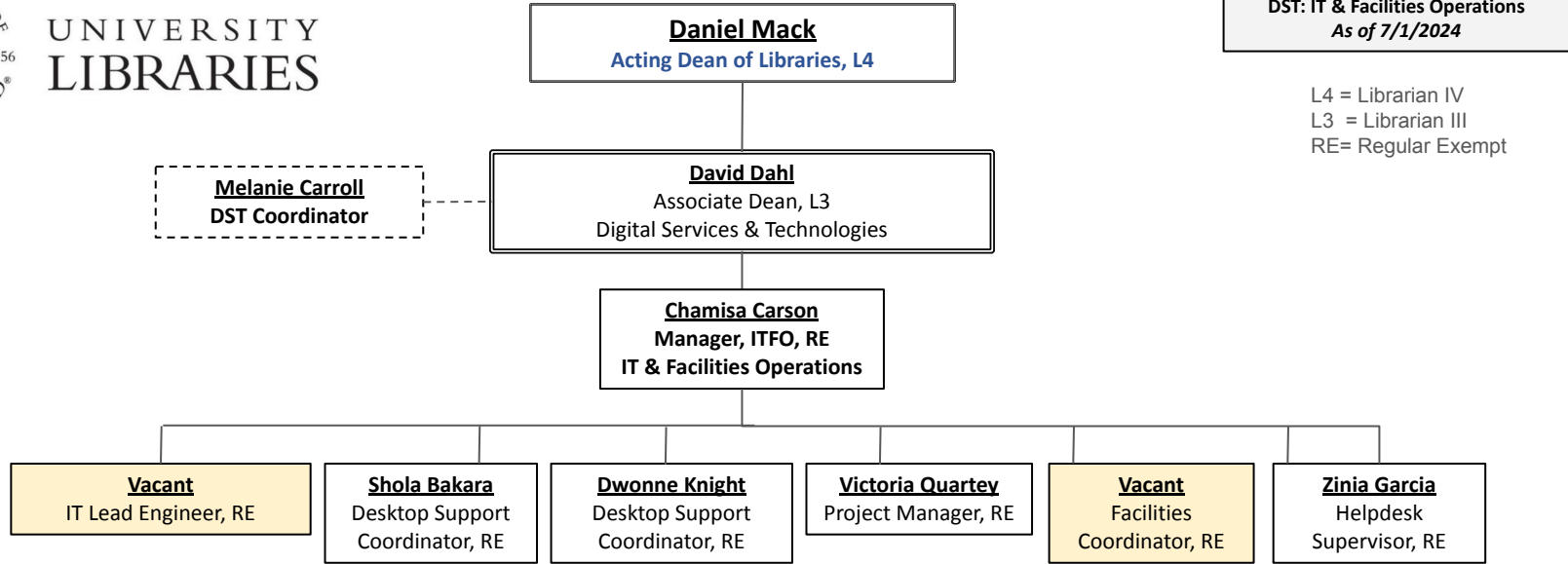


UNIVERSITY
LIBRARIES





UNIVERSITY LIBRARIES



DST: IT & Facilities Operations
As of 7/1/2024

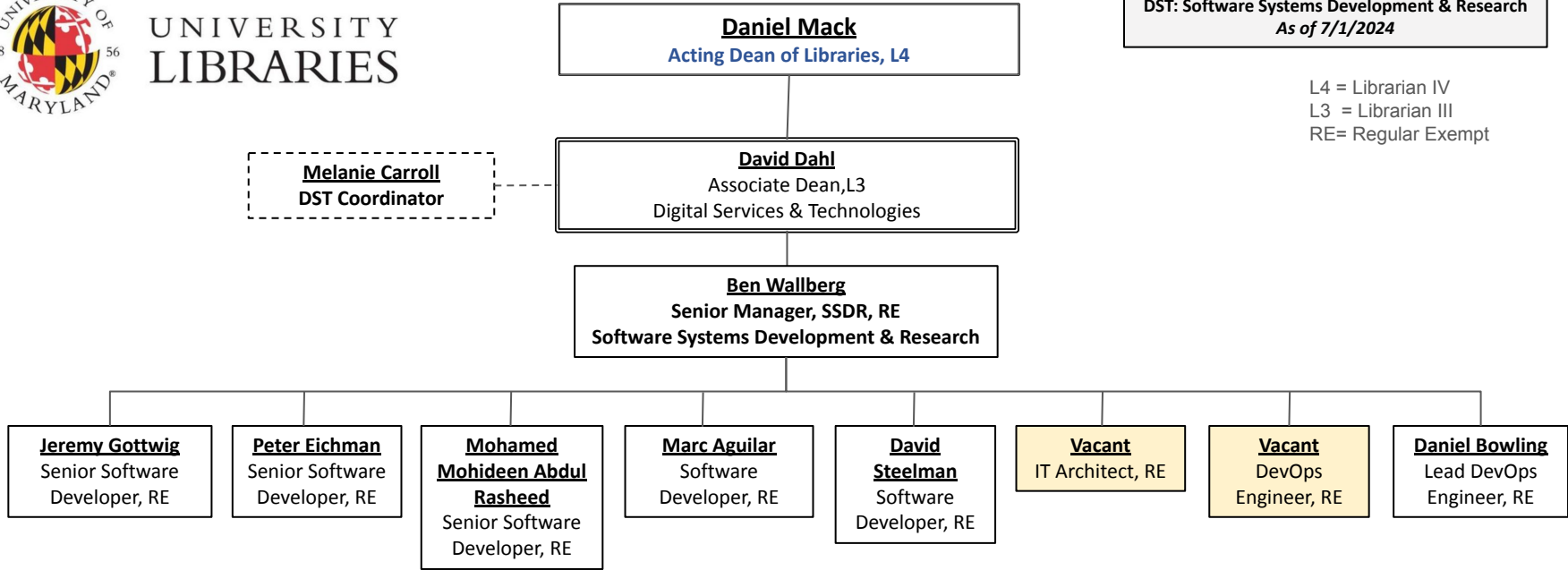
L4 = Librarian IV
L3 = Librarian III
RE= Regular Exempt



UNIVERSITY LIBRARIES

DST: Software Systems Development & Research
As of 7/1/2024

L4 = Librarian IV
L3 = Librarian III
RE= Regular Exempt





UNIVERSITY LIBRARIES

DST: CLAS/USMAI
As of 7/1/2024

L4 = Librarian IV
L3 = Librarian III
PTK = PTK Faculty
RE = Regular Exempt
EC2= Exempt Cont. II

Daniel Mack
Acting Dean of Libraries, L4

David Dahl
Associate Dean, L3
Digital Services & Technologies
**Associate Dean is Hiring Manager for USMAI*

Melanie Carroll
DST Coordinator

Vacant, Ex. Director, USMAI
***USMAI Executive Director acts as Unit Director
Reports to USM & Council of Library Deans*

MD Galvin
Head, PTK
Consortial Library
Services & Operations

Joseph Koivisto
Head, L3
Consortial Digital
Initiatives

Katia Fowler
Community Program
Manager, EC2

Erica Owusu
Program Manager

Jeffrey Hines
Librarian, PTK
Consortial Systems

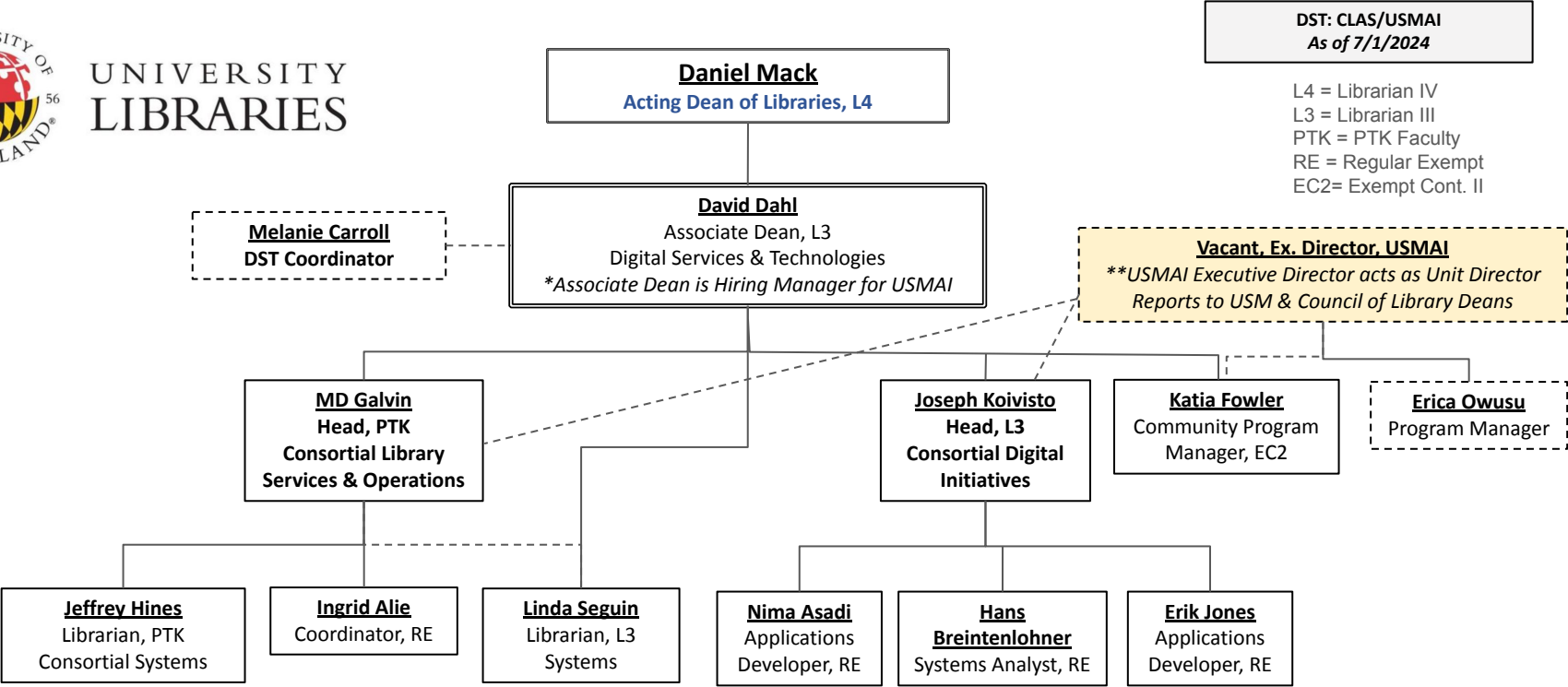
Ingrid Alie
Coordinator, RE

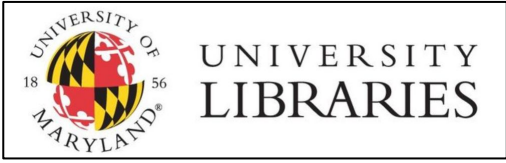
Linda Seguin
Librarian, L3
Systems

Nima Asadi
Applications
Developer, RE

Hans Breitenlohner
Systems Analyst, RE

Erik Jones
Applications
Developer, RE





L4 = Librarian IV

Daniel Mack
Acting Dean of Libraries, L4

Blaze Buck
CSS Coordinator

Associate Dean, CSS, L4
Collection Strategies & Services

Kathy Glennan
Director, CMS
Cataloging & Metadata Services

Mark Coulbourne
Interim Head
Preservation

Maggie Saponaro
Director, CDS
Collection Development Strategies

Douglas McElrath
Director, SCUA
Cataloging & Metadata Services

- Monographs Cataloging
- Monographs & Media Cataloging
- Continuing Resources
- Special Collection Cataloging
- Metadata Production & Management
- Metadata
- Music Cataloging

- Preservation
- Special Collections Conservator
- Collection Care

- Subject Specialist Librarians
- Collection Development Strategies
- Acquisitions, Continuing Resources & Data Services

- Collections Access
- Prange Curator & East Asia
- University Archivist
- HD & Historical Collection
- Instruction & Outreach
- Mass Media & Culture
- Labor Collections



UNIVERSITY LIBRARIES

Daniel Mack
Acting Dean of Libraries, L4

CSS: Cataloging & Metadata Services
As of 7/1/2024

Blaze Buck
CSS Coordinator

Associate Dean, CSS, L4
Collection Strategies & Services

L4 = Librarian IV
L3 = Librarian III
RE = Regular Exempt
NE = Nonexempt Regular

Kathy Glennan
Director, CMS, L4
Cataloging & Metadata Services

Erica Hemsley
Manager, RE
Metadata
Production &
Management

Vacant > Librarian
Gov Docs

Lisa Shiota
Librarian, L2
Metadata

Bobbie Mallett
Librarian, L2
Special
Collections
Cataloging

Andrea Schuba
Librarian, L2
Monographs
Cataloging

Beth Guay
Librarian, L3
Continuing
Resources

Steven Quintillian
Music Cataloging
Coordinator, RE

Sarah Hovde
Librarian, L2
Monographs &
Media
Cataloging

Sharam Taavoni
Persian Cataloging Coordinator, NE

Paul Bushmiller
Database Editor/Copy Cataloger, NE

Jakera Webb
Database Technician/Copy Cataloger, NE

HuyenTran Nguyen
End Processing Specialist, NE

Aaron Wilson
Government Documents Coordinator, NE

Audrey Chen
East Asian
Cataloging
Coordinator, EX



UNIVERSITY LIBRARIES

Daniel Mack
Acting Dean of Libraries, L4

CSS: Special Collections & University Archives
As of 7/1/2024

Blaze Buck
CSS Coordinator

Associate Dean, CSS, L4
Collection Strategies & Services

L4 = Librarian IV
L3 = Librarian III
L2 = Librarian II
RE = Regular Exempt
NE = Nonexempt Regular
EC1 = Exempt Contingent 1
EC2 = Exempt Contingent 2

Douglas McElrath
Director, SCUA, L3
Special Collections & University Archives

Cate Mayfield
Collections Access
Associate Director, L2

Vacant
Outreach &
Eng. Lib.

Lae'I Hughes-Watkins
Engagement, Inclusion &
Reparative Archiving, L3

Joni Floyd
HD & Historical
Collection, L2

Kana Jenkins
Prange Curator &
East Asian, L2

Laura Schnitker PhD
Mass Media/Culture
Coordinator, RE

Benjamin Blake
Labor Collections
Librarian, L2

Liz Caringola
Archival Metadata Librarian, L3

Amber Kohl
Res. Eng. Cdr./Lib & Rare Books Cdr., RE

Jennifer Eidson
Collections Strategies Archivist, L2

Amy Wickner
E-Records Archivist, L3

Rosemarie Fettig
Labor Archives Processing Archivist, RE

Natalie Trapuzzano
University Archivist, L1

Barbara Angier
Processing Staff, EC1

Evangeline Giaconia
Processing &
Reference
Coordinator, C2

Vacant
MDHC
Initiatives
Cdr. RE

Motoko Lezec
Prange Cdr., EX

Kristen Gaffke
Lib. Svs.
Technician, NE

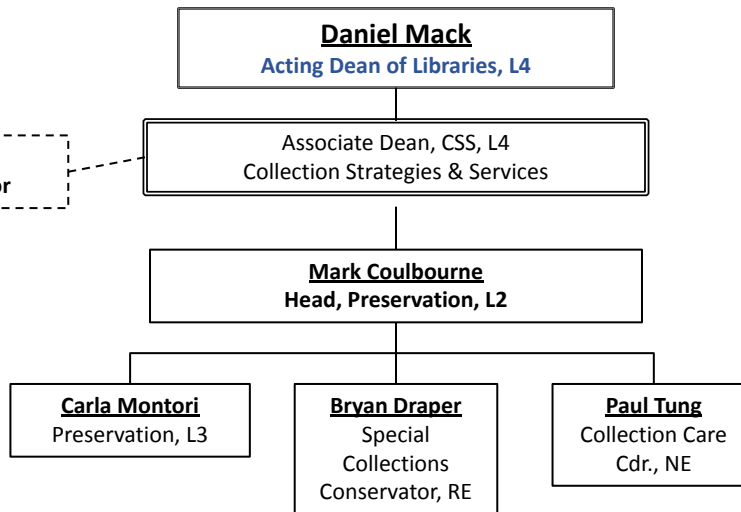
James Baxter
Mass Media &
Cultural Reference
Asst., RE

Michael Henry
Mass Media &
Culture Cdr., RE



UNIVERSITY LIBRARIES

Blaze Buck
CSS Coordinator



CSS: Preservation
As of 7/1/2024

L4 = Librarian IV
L2 = Librarian II
RE = Regular Exempt
NE = Nonexempt Regular



UNIVERSITY LIBRARIES

Daniel Mack
Acting Dean of Libraries, L4

CSS: Collection Development Strategies
As of 7/1/2024

L4 = Librarian IV

Blaze Buck
CSS Coordinator

Associate Dean, CSS, L4
Collection Strategies & Services

Maggie Saponaro
Director, CDS, L4
Collection Development Strategies

Subject Specialist Librarians

Kapil Vasudev
Collection Development Strategies

Leigh Ann DePope
Head
Acquisitions, Continuing Resources & Data Services

Continuing Resources

Ordering & Searching

Collections Data Assmt.

Accounting

Library Services



UNIVERSITY LIBRARIES

CSS: Acquisitions, Continuing Resources & Data Services
As of 7/1/2024

L4 = Librarian IV
L3 = Librarian III
RE = Regular Exempt
NE = Nonexempt Regular

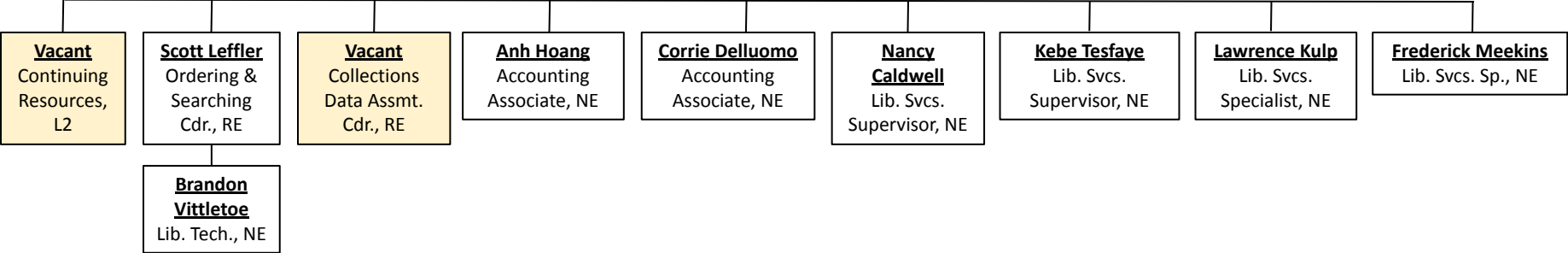
Blaze Buck
CSS Coordinator

Daniel Mack
Dean of Libraries, L4

Associate Dean, CSS, L4
Collection Strategies & Services

Maggie Saponaro
Director, L4
Collection Development Strategies

Leigh Ann DePope
Head, L3
Acquisitions, Continuing Resources & Data Services





UNIVERSITY LIBRARIES

Provost's Office

RESEARCH & ACADEMIC SERVICES
As of 7/1/2024

L4 = Librarian IV

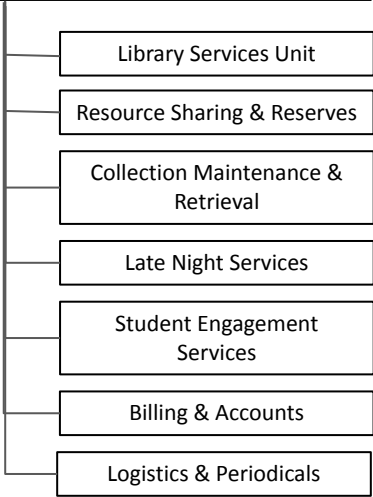
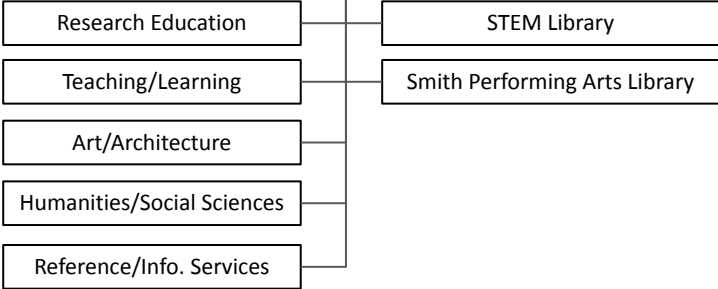
Aliya Sommerly
RAS Coordinator

Gary White, PhD
Senior Associate Dean, L4
Digital Services & Technologies

Yelena Luckert
Director
Research & Learning

Irene Munster
Director
Priddy Library (Shady Grove Campus)

Hilary Thompson
Director
User Services & Resources Sharing





UNIVERSITY LIBRARIES

Provost's Office

**RAS: Research, Teaching & Learning
As of 7/1/2024**

Aliya Sommerly
RAS Coordinator

Gary White
Associate Dean, CSS
Collection Strategies & Services

Yelena Luckert
Director, RTL, L4
Research, Teaching & Learning

L4 = Librarian IV

Jordan Sly
Head
Humanities/Social Sciences Libraries

**Lindsay Inge
Carpenter**
Head
Research Education

Rachel Gammons
Head
Teaching & Learning

Judy Markowitz
Reference & Info.
Svcs. Cdr.

Stephen Henry
Michelle Smith
Performing Arts
Library

Cindy Frank
Art/Architecture

Nevenka Zdravkovska
STEM Library

Education &
Information
Studies

Business/Economics

English

Journalism

Government
Documents &
Criminology

Gov/Politics Policy,
Women's Studies

History,
American
Studies,
Classics &
Religion

Anthropology
, Psychology
& Special
Populations

Inclusive
Fellows

Alona
Marcus

Teaching/Learning

Professional
Writing

Performing
Arts

Lib. Svcs. Sp.

IPAM

SCPA

Hannah Parker
Art/Architecture
Coordinator, RE

Public Health

GIS & Geography

Patents &
Trademarks

Life Science,
Open Sciences

Agriculture

STEM

LSSP

Access Services

Makerspace



UNIVERSITY LIBRARIES

Provost's Office

Aliya Sommerly
RAS Coordinator

Gary White
Associate Dean, CSS, L4
Collection Strategies & Services

Yelena Luckert
Director, RTL, L4
Research, Teaching & Learning

Jordan Sly
Head, L4
Humanities/Social Sciences Libraries
(Anthropology, Psychology & Special Populations)

RAS: Humanities & Social Sciences
As of 7/1/2024

L4 = Librarian IV
L3 = Librarian III

Tahirah Akbar-Williams
Education & Information Studies, L3

Zaida Diaz
Business & Economics, L3

Judy Markowitz
Gov/Politics Policy, Women's Studies, L3

Celina McDonald
Government Documents & Criminology, L3

Chuck Howell
Journalism, L3

Lily Griner
Business & Economics, L3

Emily Deinart
English, L2

Eric Lindquist
History, American Studies, Classics & Religion, L3



UNIVERSITY LIBRARIES

Aliya Sommerly
RAS Coordinator

Provost's Office

Gary White
Associate Dean, CSS, L4
Collection Strategies & Services

Yelena Luckert
Director, RTL, L4
Research, Teaching & Learning

Stephen Henry
Head, L3
Michelle Smith Performing Arts Library

Donald Manildi
IPAM Curator, L2

Drew Barker
Performing Arts, L3

John Davis
SCPA Curator, L2

Maxwell Brown
Pjct. Mgr., RE

Bruce Tennant
Lib. Svcs. Sp., NE

James Homme
Lib. Svcs. Sp., RE

Vacant
Coordinator

Ben Jackson
Pgr. Mgr., EC2

RAS: Michelle Smith Performing Arts Library
As of 7/1/2024

L4 = Librarian IV
L3 = Librarian III
RE = Regular Exempt
NE = Nonexempt Regular
EC2 = Exempt Contingent 2



UNIVERSITY LIBRARIES

Aliya Sommerly
RAS Coordinator

Provost's Office

Gary White
Associate Dean, CSS, L4
Collection Strategies & Services

Yelena Luckert
Director, RTL, L4
Research, Teaching & Learning

Nevenka Zdravkovska
Head, L3
STEM Library

RAS: STEM Library
As of 7/1/2024

L4 = Librarian IV
L3 = Librarian III
L2 = Librarian II
L1 = Librarian I
PTK = PTK Faculty
RE = Regular Exempt
NEC2 = Nonexempt Contingent 2

Milan Budhathoki
GIS & Geographic Information Sp., L3

Nedelina Tchangalova
Public Health, L4

Matthew Cain
Life Sciences, Open Science, L1

James Miller
Patents & Trademarks, PTK

M. Pinar Beygo
Cdr., RE

Lawrence Tucker
STEM Lib. Svs. Tchn.

Isabella Baxter
Agriculture L2

Leah DiCiesare
STEM, Open Science, L1

Emily Deinart
English, L2

Margaret Bentley
Access Services & Makerspace Cdr., RE

Alexander Valentin
Makerspace Technician, NEC2



UNIVERSITY LIBRARIES

Provost's Office

RAS: User Services & Resources Sharing
As of 7/1/2024

Aliya Sommerly
RAS Coordinator

Gary White
Associate Dean, CSS, L4
Collection Strategies & Services

L4 = Librarian IV
L3 = Librarian III

Hilary Thompson
Director, USRS, L4
User Services & Resources Sharing

James Spring
Manager
Library Services Unit

Brynne Norton
Head
Resource Sharing
& Reserves

Anna Nabity
Manager
Collection
Maintenance &
Retrieval

Adnan Qureshi
Manager
Late Night Services

Sharona Ginsberg
Head
Student
Engagement
Services

Charles Wright
Coordinator
Billing & Accounts

Paula Greenwell
Manager
Logistics & Periodicals



UNIVERSITY LIBRARIES

RAS: User Services & Resources Sharing, P1/2
As of 7/1/2024

L4 = Librarian IV
L3 = Librarian III
RE = Regular Exempt
NE = Nonexempt Regular
NEC2 = Nonexempt Contingent 2

Aliya Sommerly
RAS Coordinator

Adriene Lim, PhD
Dean of Libraries, L4

Gary White
Associate Dean, CSS, L4
Collection Strategies & Services

Hilary Thompson
Director, USRS, L4
User Services & Resources Sharing

James Spring
Manager, RE
Library Services Unit

Brandon Magby
Evening Sup., NE

Madison Bowling
Evening Library Svcs. & Logs. Sup., NE

Joanna Wiley
Lead Student Sup., NE

George Ramsey
Library Svcs. Sp., NE

Jasmine Johnson
Opening, Weekend & Billing Sup., NE

Cynthia Harris
Weekend Sp., NE

Yousuf Jaleel
Weekend Sp., NE

Brynne Norton
Head, L2
Resource Sharing & Reserves

Lorraine Woods
Res. Sharing Cdr., RE

Lucille Kline
Lending Sp., NE

Taylor Vaughan
Resource Sharing Document Delivery Sp., NE

Alex Angulo Valentin
Resource Sharing Borrowing Sp., NE

Jennifer Cotton
Course Reserves Cdr., RE

Chris Winters
Hard Copy/Billing Sp., NE

Douvonte Farmer
Electronic Sp., NE

Ali House
Textbooks Sp., NEC2

Zoe Singleton
Streaming Media Sp., NE

Anna Nabity
Manager, RE
Collection Maintenance & Retrieval

Adriana Hawkins
Specialist, NE

Leah Haworth
Specialist, NE

Jerome Weiland Jr
Specialist, NE

Kathryn Pickard
Technician, NE

Amy Kim
Student Supervisor Logistics & Periodicals, NE

Arthur Natishan
Supervisor Severn Daily Operations, NE



UNIVERSITY LIBRARIES

RAS: User Services & Resources Sharing, P2/2
As of 7/1/2024

L4 = Librarian IV
L3 = Librarian III
RE = Regular Exempt
NE = Nonexempt Regular

Adriene Lim, PhD
Dean of Libraries, L4

Aliya Sommerly
RAS Coordinator

Gary White
Associate Dean, CSS, L4
Collection Strategies & Services

Hilary Thompson
Director, USRS, L4
User Services & Resources Sharing

Adnan Qureshi
Manager, RE
Late Night Svcs.

Charles Wright
Coordinator, RE
Billing & Accounts

Sharona Ginsberg
Head, L2
Student Engagement Services

Paula Greenwell
Manager, RE
Logistics & Periodical

Antonio Hill
Late Night Tech., NE

Jeremy Weiner
Late Night Sp., NE

Chris Winters
Course Res. Sp., NE

Kevin Hammett
TLC Operations Cdr., RE

Marian Dorsey
Eq. Loan Sp., NE

Kesavan Kumar
Self-Pub. & Acctg.
Svcs. Sp., NE

Ying Guo
Supervisor, NE
Tech Desk Student

Chris Bunn
Log. & Per. Sp., NE

Amy Kim
Coll. Maint. &
Retrieval, NE

Madison Bowling
Supervisor, NE
Evening Lib. Svcs.
& Logistics