

Supplementary Material

Impact of Nonzero Intercept Gas Transfer Velocity Parameterizations on Global and Regional Ocean–Atmosphere CO₂ Fluxes

Mariana Ribas-Ribas ^{1,*}, Gianna Battaglia ², Matthew P. Humphreys ³, and Oliver Wurl ¹

¹ Center for Marine Sensors, Institute for Chemistry and Biology of the Marine Environment, Carl von Ossietzky University Oldenburg, Wilhelmshaven 26129, Germany; oliver.wurl@uol.de

² Climate and Environmental Physics, Physics Institute, and Oeschger Centre for Climate Change Research, University of Bern, Bern 3012, Switzerland; gianna.battaglia@hotmail.com

³ Centre for Ocean and Atmospheric Sciences, School of Environmental Sciences, University of East Anglia, Norwich NR4 7TJ, UK; Matthew.Humphreys@uea.ac.uk

* Correspondence: mariana.ribas.ribas@uol.de; Tel.: +49 4421 944164

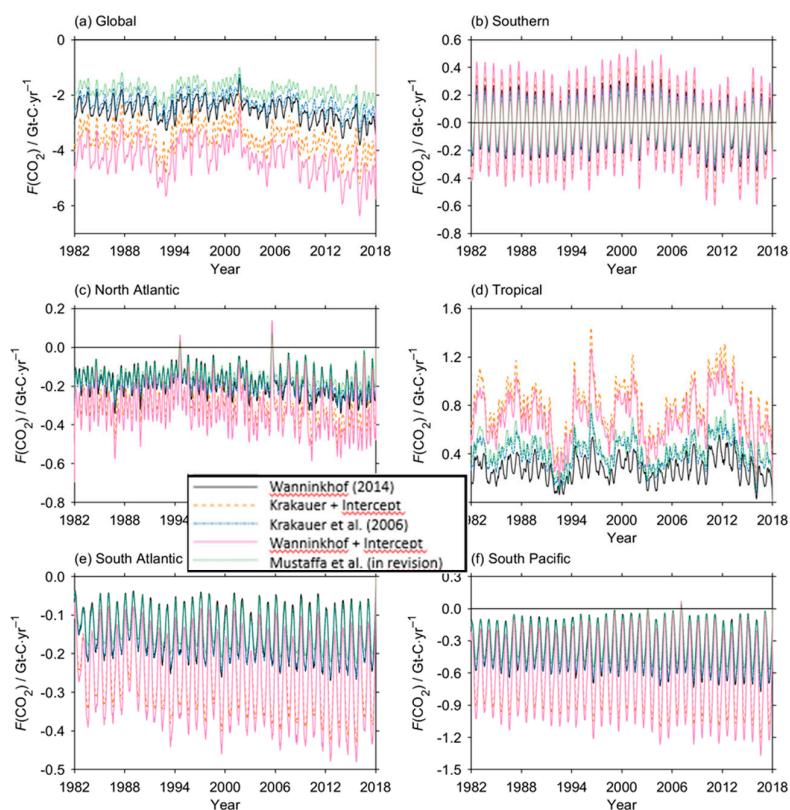


Figure 1. Fluxes calculated from the pCO₂-based product for the period 1982–2018. (a) Global and from (b) to (f) where higher changes are expected: (b) Southern Ocean, (c) North Atlantic, (d) Tropical, (e) South Atlantic, and (f) South Pacific. Different colors represent different parameterizations, as in Figure 5: black indicates F_W , blue indicates F_K , orange indicates F_{K+I} , rose indicates F_{W+I} , and green indicates F_M . The color legend is the same as in Figure 6 of the main test.