

1 MEDICAL RISK CLASSIFICATION FOR SEVERE COVID-19 BASED ON  
2 CHRONIC MEDICAL CONDITIONS: A COMPARATIVE ANALYSIS

3 3490 words

4 Ilse Westerhof<sup>1\*</sup>, Annemarijn de Boer<sup>1</sup>, Angela Lupattelli<sup>2</sup>, Isabel Slurink<sup>1</sup>, Otilia Boldea<sup>3</sup>, Hedvig Marie  
5 Egeland Nordeng<sup>2,4</sup>, Jizzo R. Bosdriesz<sup>5,6,7</sup>, Frank Pijpers<sup>8,9</sup>, Maarten Schim van der Loeff<sup>5,6,7</sup>, Mirjam Knol<sup>5</sup>,  
6 Janneke van de Wijgert<sup>1,5</sup>, Patricia Bruijning<sup>1</sup>, and Ganna Rozhnova<sup>1,10,11,12</sup>

7 <sup>1</sup>Julius Centre for Health Sciences and Primary Care, University Medical Centre Utrecht, Utrecht University, Utrecht, The  
8 Netherlands

9 <sup>2</sup>Pharmacoepidemiology and Drug Safety Research group, Department of Pharmacy, University of Oslo, Oslo, Norway

10 <sup>3</sup>Department of Econometrics and OR, Tilburg School of Economics and Management, Tilburg University, Tilburg, The  
11 Netherlands

12 <sup>4</sup>Department of Child Health and Development, National Institute of Public Health, Oslo, Norway

13 <sup>5</sup>Department of Infectious Disease Control, National Institute for Diseases, Public Health and the Environment, Bilthoven

14 <sup>6</sup>Amsterdam UMC location University of Amsterdam, Infectious Diseases, Meibergdreef 9, Amsterdam, the Netherlands

15 <sup>7</sup>Amsterdam institute for Immunology & Infectious Diseases, Amsterdam, the Netherlands

16 <sup>8</sup>Statistics Netherlands, The Hague, Netherlands

17 <sup>9</sup>Korteweg-de Vries Institute for Mathematics, University of Amsterdam, Amsterdam, The Netherlands

18 <sup>10</sup>Center for Complex Systems Studies (CCSS), Utrecht University, Utrecht, The Netherlands

19 <sup>11</sup>BioISI—Biosystems & Integrative Sciences Institute, Faculdade de Ciências, University of Lisbon, Lisbon, Portugal

20 <sup>12</sup>Faculdade de Ciências, University of Lisbon, Lisbon, Portugal

21 \* Corresponding author: Ilse Westerhof; [i.westerhof-4@ucmutrecht.nl](mailto:i.westerhof-4@ucmutrecht.nl)

22

## 23 Abstract (299 words)

24 **Background:** The European Centre for Disease Prevention and Control (ECDC) provides listings of  
25 medical conditions conferring high- or moderate-risk for severe COVID-19. In addition, individual  
26 European countries developed their own risk classifications for severe COVID-19 to select individuals  
27 recommended for annual COVID-19 vaccination. We assessed the discordance between the European and  
28 respective national medical risk classifications in assigning children and adults to risk groups for  
29 developing severe COVID-19 in populations of the Netherlands and Norway.

30 **Methods:** This multi-country, healthcare data-linkage study covered 17.4 million inhabitants of the  
31 Netherlands and 5.6 million inhabitants of Norway by 1 January 2020. Medical conditions were defined  
32 based on ICD-10 hospital discharge codes in the European and Dutch classifications, and on ICD-10 and  
33 ICPC-2 primary care codes in the Norwegian classification. Subjects were classified as high-, moderate-,  
34 or low-risk. Discordance was calculated as the proportion of the population with a different risk status in  
35 the respective national compared to the European classification.

36 **Findings:** The overall discordance between European and national risk classification was 12.0% in the  
37 Dutch and 13.8% in the Norwegian population. The European classification assigns more individuals to  
38 high-risk (9.0% and 9.2% of the Dutch and Norwegian populations, respectively) than the national  
39 classifications (1.5% and 3.0%, respectively). National classifications define more individuals as  
40 moderate-risk (11.3% and 12.7%, respectively) than the European classification (1.0% and 1.3%,  
41 respectively). Classification discordances most frequently involved subjects with cardiovascular disease,  
42 lung disease, and diabetes mellitus.

43 **Interpretation:** The European classification defines a substantially larger percentage of the population as  
44 high-risk for severe COVID-19 than the national classifications. This may have implications for post-  
45 pandemic vaccination programs. Further research should assess to what extent the medical conditions  
46 responsible for the classification discordances determine the risk of developing severe COVID-19.

47  
48 **Funding:** ZonMw, EU, FCT, Norwegian Research Council's COVID-19 Emergency Call, iAPOGEE.

49 **Research in context**

50 **Evidence before this study**

51 We searched PubMed for English-language articles published from 1 January 2020 to 1 July 2024, using  
52 the search terms (((("COVID-19"[Title] OR "SARS-CoV-2"[Title]) AND ("sever\*" [Title] OR  
53 "hospital\*" [Title] OR "death"[Title] OR "decease\*" [Title]) AND ("chronic condition\*" [Title/Abstract] OR  
54 "comorbidit\*" [Title/Abstract]) AND ("guideline"[Title] OR "classification"[Title] OR "system"[Title])  
55 AND 2020/01/01:2024/07/01[Date - Create]) NOT "clinical trial"[Publication Type]) NOT "case  
56 reports"[Publication Type]). This search identified 64 studies, but none of them assessed the impact of  
57 different medical risk classifications for severe COVID-19 or compared them across countries or to the  
58 European classification.

59

60 **Added value of this study**

61 To the best of our knowledge, this is the first study that compared the impact of European and national  
62 medical risk classifications for severe COVID-19 by assigning the populations of the Netherlands and  
63 Norway to medical risk groups using national healthcare registries. We demonstrated important  
64 discrepancies between the European and respective national schemes in classifying high- and moderate-  
65 risk individuals in both countries. The chronic conditions responsible for the classification discordances  
66 were lung disease, cardiovascular disease, neurological disorders, diabetes mellitus, cancer, and  
67 hypertension.

68

69 **Implications of all the available evidence**

70 Our comparative analysis suggests that the choice between the European and national classifications may  
71 have important consequences for public health interventions such as vaccination campaigns. The  
72 variability in risk assignment based on chronic medical conditions underscores the absence of an  
73 international uniform approach. More research is needed to determine the extent to which each chronic  
74 medical condition impacts COVID-19 severity in the post-pandemic period, facilitating the refinement of  
75 risk classifications and supporting targeted public health interventions.

## 76 Introduction

77 The impact of public health measures, including COVID-19 vaccination, depends on the accurate  
78 identification of populations at elevated risk for severe outcomes, including hospitalization and death<sup>1</sup>. The  
79 World Health Organization recommends targeting vaccination programs to population groups at the  
80 highest risk of severe COVID-19<sup>1</sup>, but disparities exist in the risk classifications developed by different  
81 health authorities. While COVID-19 currently presents as common cold- or flu-like illness, older  
82 individuals and those with certain chronic medical conditions still face higher hospitalization and death  
83 rates compared to the general population<sup>2,3</sup>. Most risk classifications group individuals into high-,  
84 moderate-, and low-risk for severe COVID-19, based on factors like medical conditions and age. High-risk  
85 individuals have chronic conditions that lead to a much higher likelihood of severe outcomes, while those  
86 in the moderate-risk group face an elevated but lower risk.

87  
88 Informed by influenza risk classifications and studies on risk factors for severe COVID-19, national (e.g.,  
89 the Health Council of the Netherlands<sup>4</sup> and the Public Health Institute in Norway<sup>5</sup>) and international (e.g.,  
90 the European Centre for Disease Prevention and Control<sup>6</sup>) public health authorities assigned high- or  
91 moderate-risk of developing severe COVID-19 to specific pre-existing medical conditions. These medical  
92 risk classifications have remained unchanged<sup>6,7</sup> or undergone minor alterations<sup>4,5,8,9</sup> since their  
93 development at the beginning of the pandemic. They have continued to guide epidemiological research and  
94 policy decisions on eligibility criteria and prioritization for vaccination programs aimed at reducing the  
95 incidence of severe COVID-19. While these European and national classifications can be applied within  
96 the same country, it is unclear to what extent they differ in assigning medical risk status to individuals.

97  
98 To inform evidence-based decision-making for severe COVID-19, we conducted a comparative analysis of  
99 risk status in the respective national versus the European classification. This observational national  
100 registry-based cohort study used Dutch and Norwegian health and administrative data from 1 January  
101 2020, linked at the individual level, including 17.4 million inhabitants of the Netherlands and 5.6 million  
102 inhabitants of Norway. We aimed to examine discordance between the respective national and European  
103 medical risk classifications for severe COVID-19 and investigate related factors.

## 104 Methods

### 105 Data Collection

#### 106 Data collection – The Netherlands

107 The Dutch dataset included hospital discharge registry (DHD) data for all inhabitants of the Netherlands as  
108 per the Dutch Population Registry on 1 January 2020. The two registries were linked using unique personal  
109 identification numbers. The Population Registry was used to extract age, immigration, and emigration  
110 dates. The DHD provided information on chronic medical conditions diagnosed in hospitals since 1  
111 January 1995, including the date of diagnosis. All diagnoses were registered according to the International  
112 Statistical Classification of Diseases and Related Health Problems, 10<sup>th</sup> revision (ICD-10)<sup>10</sup>.

113

#### 114 Data collection – Norway

115 The Norwegian dataset included data from multiple Norwegian registries for all inhabitants of Norway as  
116 per the National Population Registry on 1 January 2020. The registries included the Statistics Norway  
117 (SSB) registry, the Norwegian Patient Registry (NPR), and the Norway Control and Payment of Health  
118 Reimbursements (KUHR) registry. These registries were linked using unique personal identification  
119 numbers. The NPR and SSB registries were used to extract age, immigration, and emigration dates for all  
120 inhabitants of Norway. The KUHR registry provided information on medical diagnoses in primary and  
121 secondary outpatient care using the International Classification of Primary Care (ICPC-2/ICPC-2B) and  
122 ICD-10 codes, respectively<sup>10,11</sup>. The NPR provided information on medical diagnoses in specialist  
123 outpatient and inpatient care, using ICD-10 coding. Both KUHR and NPR provided medical diagnosis data  
124 since 1 January 2010.

125

### 126 Risk classifications for severe COVID-19

127 **The Dutch risk classification** was obtained from the ‘Adviesnota Vaststelling volwassen medische  
128 risicogroepen COVID-19-vaccinatiecampagne’ [‘Recommendation on establishing adult medical risk  
129 groups for the COVID-19 vaccination campaign’] in February 2023<sup>4</sup>. This classification contains a list of  
130 chronic medical condition categories defined as either high- or moderate-risk for severe COVID-19. Each

131 medical condition was independently coded using ICD-10 by two authors (AvB and IW), with no  
132 discrepancies found.

133

134 **The Norwegian risk classification** was obtained from the Norwegian Health Institute in July 2023<sup>5</sup>. This  
135 scheme includes chronic medical condition categories with corresponding ICPC-2 and ICD-10 codes  
136 classified as either high-risk or increased-risk, which we renamed as high- and moderate-risk for  
137 consistency with other classifications.

138

139 **The European risk classification** was obtained from the ‘Core protocol for ECDC studies of COVID-19  
140 vaccine effectiveness against hospitalization with Severe Acute Respiratory Infection (SARI), laboratory-  
141 confirmed with SARS-CoV-2 or with seasonal influenza – Version 3.0’ dated February 2024<sup>6</sup>. This  
142 protocol provides ICD-10 codes for medical condition categories that are mandatory or optional for  
143 reporting in the ECDC studies. We classified the former medical condition categories as high-risk and the  
144 latter as moderate-risk.

145

146 Individuals in the Dutch or Norwegian datasets were assigned to have moderate- or high-risk chronic  
147 medical conditions if at least one relevant ICD-10 (both datasets) or ICPC-2 code (Norwegian cohort only)  
148 was recorded for that individual within the six months prior to 1 January 2020. For cancer diagnoses,  
149 records within five years prior to 1 January 2020 were used. Different medical risk classifications may use  
150 different codes for the same chronic medical condition, as each classification was developed with its own  
151 coding system. The ICD-10 and ICPC-2 codes used for this analysis are detailed in **Supplementary**

152 **Tables 1-3.**

153

154 Individuals with one or more high-risk chronic medical condition categories, regardless of whether they  
155 also had one or more moderate-risk conditions, were defined as being at high-risk for severe COVID-19.  
156 Individuals with one or more moderate-risk chronic medical condition categories and no high-risk chronic  
157 medical condition were defined as being at moderate-risk for severe COVID-19. Individuals without any  
158 listed chronic medical condition categories were defined as low-risk. Pregnancy was not a criterion for  
159 categorizing individuals into the high- or moderate-risk groups in all classifications.

160

## 161 [Statistical Analysis](#)

162 Data for the Netherlands and Norway were analyzed separately. Descriptive analyses were performed to  
163 compare the respective national with the ECDC classification. The prevalence of high- and moderate-risk  
164 medical condition categories, and the most frequent combinations of medical condition categories, were  
165 shown in upset plots which visualize co-occurrence of chronic medical condition categories in the  
166 population.

167

168 We reported both absolute numbers and proportions of individuals by 10-year age groups, classified into  
169 high-, moderate-, and low-risk groups for severe COVID-19. The discordance between the European and  
170 each national classification was calculated as the proportion of the population with a different European  
171 versus national risk status and visualized with matrix plots. Different medical risk classifications may use  
172 different codes for the same chronic medical condition because they were formulated as such by the  
173 classifications. The 95% confidence intervals (CI) of discordance and concordance proportions were  
174 calculated using the Clopper-Pearson method<sup>12</sup>.

175

176 To understand the factors related to discordance, we visualized the co-occurrence of chronic medical  
177 condition categories in the discordant populations with upset plots. Since the Netherlands and Norway  
178 consider individuals above a certain age as high-risk for severe COVID-19, we assessed the discordance in  
179 three scenarios: 1) the entire population regardless of age, 2) individuals younger than 60 years of age,  
180 aligning with the Dutch schemes<sup>13</sup>, and 3) individuals younger than 65 years of age, aligning with the  
181 Norwegian schemes<sup>5</sup>.

182

183 A sensitivity analysis was conducted to assess the importance of the reference date by evaluating the  
184 discordance for 1 January 2018, 1 January 2019, and 1 January 2021, instead of 1 January 2020.

185

## 186 [Code Availability](#)

187 The codes reproducing the results of this study are publicly available at

188 <https://github.com/IWesterhof/COVID-19-risk-classifications>.

189

## 190 Data Availability

191 The aggregated tables of counts generated and analyzed in this study are publicly available at

192 <https://github.com/IWesterhof/COVID-19-risk-classifications>.

193 Results are based on calculations by the authors using non-public microdata from Statistics Netherlands.

194 Under certain conditions, these microdata are accessible for statistical and scientific research. For further  
195 information: [microdata@cbs.nl](mailto:microdata@cbs.nl).

196

## 197 Ethics

198 The analyses conducted with data from the Netherlands did not fall under the scope of the Dutch Medical  
199 Research Involving Human Subjects Act (WMO) and, therefore, did not require approval from an  
200 accredited ethics committee in the Netherlands. For the analyses conducted with data from Norway, the  
201 Regional Committee for Medical and Health Ethics of South/East Norway (no. 285687) approved the  
202 study. The Norwegian Data Protection Services for research and the University of Oslo approved the Data  
203 Protection Impact Assessment – DPIA (no. 341884).

204

## 205 Role of the funding source

206 The funders of the study had no role in study design, data collection, data analysis, data interpretation, or  
207 writing of the report. The corresponding author had full access to all the data in the study and had final  
208 responsibility for the decision to submit for publication.



209

## 210 Results

211 The Dutch cohort contained records of 17.4 million individuals (median age 42, interquartile range (IQR)  
212 22-60), while the Norwegian cohort contained records of 5.6 million individuals (median age 39, IQR 21-  
213 57).

214

### 215 Comparison of risk classifications for severe COVID-19

216 Chronic medical condition categories included in the European, Dutch, and Norwegian risk classifications  
217 and their respective risk groups for severe COVID-19 are shown in **Table 1**. Several chronic medical  
218 condition categories were consistently considered high-risk (e.g., cancer, immunodeficiency, and organ  
219 transplants) and moderate-risk (e.g., dementia) in the European and national classifications. There was  
220 some variability in the risk classifications of other conditions. Obesity was considered high-risk in the  
221 European classification but moderate-risk in both national classifications; lung disease, heart disease, and  
222 diabetes mellitus were considered high-risk in the European classification but moderate-risk in both  
223 national classifications. Hypertension was only listed in the European classification. Down syndrome and  
224 neurological disorders with impaired breathing were not included in the European classification but were  
225 considered high-risk in both national classifications.

226

### 227 Classification of the general population by risk for severe COVID-19

228 Based on the national classifications, the most prevalent chronic medical condition categories in the  
229 Netherlands were lung disease, followed by cardiovascular disease, reduced immunity, and neurological/  
230 muscular disorder; all classified as moderate-risk (**Figure 1 A**). In Norway, the most prevalent conditions  
231 were cardiovascular disease, lung disease, and diabetes mellitus; these were also classified as moderate-  
232 risk (**Figure 1 B**). Based on the European classification, the most prevalent chronic medical condition  
233 categories in the Netherlands were cardiovascular disease, hypertension, and cancer, and in Norway  
234 cardiovascular disease, diabetes mellitus, and cancer; all classified as high-risk (**Figure 1 C-D**).

235 Differences in the prevalence between classifications arise from variations in the diagnosis codes to define  
236 a specific medical risk condition. For example, in the Netherlands, 0.54% of the population was classified  
237 as having cancer using the national classification, compared to 2.0% using the European classification  
238 because this classification included seven additional ICD-10 codes (**Supplementary Tables 1-2**). In  
239 Norway, 2.3% of the population was classified as having cancer using the national classification compared  
240 to 2.1% using the European classification due to differences in included codes.

241  
242 In both countries and across all classifications, most individuals under 80 years of age were assigned low-  
243 risk for developing severe COVID-19 (**Figure 2**). Among children and adolescents (under 20 years old),  
244 92.8% were classified as low-risk, 6.9% as moderate-risk, and 0.3% as high-risk, according to national  
245 schemes, while this was 98.5%, 0.4%, and 1.2%, respectively, according to the European classification. In  
246 Norway, the national classification identified 98.5% as low-risk, 0.4% as moderate-risk, and 1.2% as high-  
247 risk, while this was 96.4%, 0.5%, and 3.1%, respectively, according to the European classification. In both  
248 countries and across all classifications, the percentage of individuals in moderate- and high-risk groups  
249 increased with age, reaching 41.1% and 53.6% for those over 80 years in the national classifications, and  
250 41.8% and 37.7% in the European classifications in the Netherlands and Norway, respectively.

251

## 252 [Discordance between risk classifications and the related factors](#)

253 In the Netherlands and Norway, risk classification differed for 12.0% and 13.8% of the general population,  
254 respectively, between the national and the European classification schemes (**Figure 3 A-B**). The European  
255 classification assigned more people as high-risk (9% in the Netherlands, 9.2% in Norway) compared to  
256 national classifications (1.5% and 3.0%, respectively). Conversely, the national classifications identified  
257 more people as moderate-risk (11.3% and 12.7%, respectively) than the European classification (1.0% and  
258 1.3%, respectively). According to the national classifications, 87.2% of the population in the Netherlands  
259 and 84.4% in Norway were classified as low-risk. These percentages were slightly higher using the  
260 European classification (90.1% and 89.5%, respectively). Discordance was higher in elderly because the  
261 number of individuals with one or more medical risk conditions was higher than in younger age groups  
262 (**Figure 2; Figure 3 C-F**).

263 **Figure 4** shows the chronic medical condition categories in individuals who were classified differently by  
264 the European and respective national classification schemes (the discordant population). In the discordant  
265 population in the Netherlands, 23.5% had neurological/muscular disorders, 23.8% reduced immunity, and  
266 13.6% kidney disease according to the national classification (**Figure 4A**). In the discordant population in  
267 Norway, 6.7% had reduced immunity, and 2.3% neurological/muscular disorders, classified as moderate-  
268 and high-risk, respectively (**Figure 4B**). None of the discordant individuals in the Netherlands had cancer,  
269 while 0.6% did in Norway, explained by differences in ICD-10 and ICPC-2 coding practices between the  
270 European and Norwegian classifications. On the contrary, the European classification included chronic  
271 medical condition categories that were not included in the national classifications. In the Netherlands,  
272 examples were hypertension and kidney disease with prevalences of 25.5% and 6.3% in the discordant  
273 population. According to the European classification, 11.7% of the discordant Dutch population had cancer  
274 in contrast to none according to the national classification, as the European classification encompassed  
275 additional ICD-10 codes for cancer. In Norway, 8.2% of the discordant population had hypertension and  
276 3.6% had kidney disease according to European schemes, but not included in national schemes. Unlike  
277 Norway, none of the discordant individuals in the Netherlands were classified as overweight/obese or  
278 diabetic based on the European classification.

279

280 In the Netherlands, the most common chronic medical condition categories varied by age group  
281 (**Supplementary Figures 1-2**). In those younger than 60 or 65, lung disease was the most prevalent  
282 condition, followed by neurological/-muscular disorder and cardiovascular disease. In Norway, the  
283 national classification showed no differences between all ages and individuals younger than 65 and 60  
284 years of age in most pronounced chronic conditions. In the Netherlands, based on the European  
285 classification there was no change in the order of most prominent conditions contributing to discordance in  
286 the population aged below 60 years compared to all ages. In contrast, for those aged below 65 years, the  
287 most prevalent conditions were cardiovascular disease, diabetes mellitus, and lung disease, but not  
288 hypertension and cancer.

289

## 290 **Sensitivity analyses**

291 No meaningful differences in discordance percentages were observed when using different reference dates  
292 to define the study populations (data not shown).

293

## 294 Discussion

295 In this multi-country, nationwide registry-linkage study, we compared the respective national with the  
296 European medical risk classification for severe COVID-19, and classified the populations of the  
297 Netherlands and Norway according to this risk, across different age groups. Our findings revealed  
298 substantial differences between these risk classifications, with the European classification scheme  
299 assigning a broader range of chronic medical condition categories to the high-risk category than the two  
300 national classifications. Consequently, a larger proportion of the population is classified as high-risk when  
301 using the European classification compared to the national classifications. Conversely, a larger proportion  
302 of the population is classified as moderate-risk when using the respective national classifications compared  
303 to the European classification.

304

305 These discrepancies may have implications for COVID-19 vaccination programs, which prioritize specific  
306 risk populations. Although primarily designed for research focusing on COVID-19 vaccine effectiveness  
307 and enhancing SARI surveillance in Europe, the European protocols have influenced public health policy  
308 in the past, as demonstrated, for example, with influenza vaccination strategies<sup>14</sup>. Therefore, the European  
309 classification for severe COVID-19 could remain relevant for broader public health decisions and policy.  
310 Our comparative analysis suggests that using the European classification, 9.0% of the population in the  
311 Netherlands and 9.2% of the population in Norway are high-risk due to chronic medical condition  
312 categories and should be vaccinated, while these percentages are only 1.5% and 3.0%, respectively, when  
313 using the national classifications. Vaccination programs that prioritize both moderate- and high-risk  
314 groups, the European classification would result in 10.0% of the Dutch population and 10.5% of the  
315 Norwegian population having to be vaccinated, compared to 12.8% and 13.7%, respectively, if using the  
316 respective national classifications. Moreover, chronic medical condition categories are defined based on

317 different ICD-10 and ICPC-2 codes in the three classifications, resulting in differences in prevalence of  
318 individual medical risk categories across classifications. Therefore, the choice between the European or  
319 national classifications may have important consequences for vaccination prioritization and coverage,  
320 potentially influencing the impact of vaccination campaigns in preventing severe COVID-19.

321  
322 The dominant medical condition categories generating the discordance in risk status were lung and  
323 cardiovascular disease in both Norway and the Netherlands, neurological disorders in the Netherlands, and  
324 diabetes in Norway. Hypertension was one of the most pronounced discordant chronic condition categories  
325 between classifications. According to the European classification, but not to the national ones,  
326 hypertension was considered a high-risk disorder for severe COVID-19, and its prevalence estimate was  
327 3.5% in the Netherlands and 1.4% in Norway. Several studies have indicated that hypertension was not an  
328 independent predictor of severe COVID-19<sup>15,16</sup>. Therefore, the high-risk population might be  
329 overestimated in the European classification. Lung disease, cardiovascular disease, and diabetes mellitus  
330 were also among the most pronounced medical condition categories leading to discordance, which were  
331 diagnosed in 1.7-4.6% of the population according to the national and European classifications. These  
332 conditions were classified as moderate-risk in the national classifications but as high-risk in the European  
333 classification. Although multiple studies have shown an increased risk of severe COVID-19 in individuals  
334 with these medical condition categories<sup>17-19</sup>, it is unknown whether they should be part of the high- or  
335 moderate-risk group. Interestingly, the European classification does not include Down syndrome and  
336 neurological/-muscular disorder as risk factors for severe COVID-19, while the national classifications  
337 consider them as moderate- or high-risk chronic conditions. Several studies have demonstrated an  
338 increased risk of COVID-19 hospitalization and death among individuals with Down syndrome<sup>20,21</sup> and  
339 multiple sclerosis<sup>22,23</sup>. This supports the need to assess the discordant conditions in relation to severe  
340 COVID-19 to ensure vaccination prioritization and coverage of individuals at high-risk.

341  
342 Our study has several limitations. There is a potential underestimation of the population with high- and  
343 moderate-risk for severe COVID-19 in the Netherlands. The detection of chronic medical condition  
344 categories in the Netherlands relied solely on ICD-10 codes from hospital discharge data. Individuals  
345 without recent hospital admission may be missed, as hospital data might not capture those whose

346 conditions are managed in primary care. Consequently, there is a potential underestimation of the number  
347 of individuals at moderate- and high-risk. Conversely, the analyses conducted for the population in  
348 Norway, based on diagnostic records from both outpatient and inpatient specialist care, as well as from  
349 primary care, were less susceptible to this bias. Another limitation is the absence of ICD-10 codes for  
350 asplenia in the Norwegian registries. However, since asplenia is a very rare condition, with 0.44 surgical  
351 asplenia per 100,000 person-years in Norway, it is unlikely to affect our overall conclusions<sup>24</sup>.

352

353 Future research should aim to establish a consensus on which chronic medical condition categories are  
354 universally recognized as conferring moderate- and high-risk for severe COVID-19. We propose a  
355 matched multi-country cohort study to estimate the risk of hospitalization and death due to COVID-19 in  
356 individuals with and without specific chronic conditions, accounting for confounders like age, vaccination  
357 status, and variants. This research will help decide which classification best captures the population most at  
358 risk. Moreover, mathematical modeling studies can help to understand the impact of different risk  
359 classifications and optimal vaccination strategies<sup>25-28</sup>. Incorporating risk stratification into modeling  
360 studies has the potential to design more effective strategies, a consideration often overlooked in current  
361 research efforts. Furthermore, exploring emerging data sources and digital health technologies could  
362 improve the identification and monitoring of moderate- and high-risk populations.

363

## 364 Conclusion

365 There are substantial differences between the European and the respective national medical risk  
366 classifications for severe COVID-19 based on pre-existing chronic medical condition categories, which  
367 may have important implications for vaccination strategies. The European classification suggests that a  
368 larger proportion of the population is at high-risk for severe COVID-19 and may require vaccination. The  
369 difference in classification is most pronounced for chronic medical condition categories belonging to the  
370 categories of cardiovascular disease, lung disease, and diabetes mellitus. Further research should identify  
371 to what extent the discordant chronic conditions are associated with severe COVID-19 risk.

372

373

374 **Author Contributions**

375 Conceptualization: I Westerhof, G Rozhnova. Data management: I Westerhof, A de Boer. Methodology: I  
376 Westerhof, A de Boer, G Rozhnova. Investigation: I Westerhof, A de Boer. Formal analysis: I Westerhof,  
377 A de Boer. Visualization: I Westerhof. Writing—original draft: I Westerhof, A de Boer, G Rozhnova.  
378 Writing—review and editing: I Westerhof, A de Boer, A Lupattelli, I Slurink, O Boldea, HME Nordeng,  
379 JR Bosdriesz, F Pijpers, M Schim van der Loeff, M Knol, JHHM van de Wijgert, P Bruijning, and G  
380 Rozhnova.

381

382 **Declaration of interests**

383 We declare no competing interests.

384

385 **Acknowledgments**

386 We are grateful to all the participating families in the Netherlands and Norway who are part of the health  
387 registries and made this research possible. GR, IW, AdB, and OB were supported by the ZonMw project  
388 (10430362220002). GR was supported by Fundação para a Ciência e a Tecnologia project  
389 2022.01448.PTDC, DOI 10.54499/2022.01448.PTDC. GR, IW, AL, and PB were supported by the  
390 VERDI project (101045989), funded by the European Union. Views and opinions expressed are however  
391 those of the author(s) only and do not necessarily reflect those of the European Union or the Health and  
392 Digital Executive Agency. Neither the European Union nor the granting authority can be held responsible  
393 for them. IW was supported by the scholarship program iAPOGEE “International Alliance for  
394 PharmacoGenetic Epidemiology Excellence” at the University of Oslo, Norway. Data acquisition of the  
395 Norwegian data in this study was funded by HN’s EU-COVID-19 project, funded by the Norwegian  
396 Research Council’s COVID-19 Emergency Call (project no. 31270). The work on the Norwegian data was  
397 performed on the TSD (Tjeneste for Sensitive Data) facilities, owned by the University of Oslo, operated  
398 and developed by the TSD service group at the University of Oslo, IT-Department (USIT) ([tsd-](mailto:tsd-drift@usit.uio.no)  
399 [drift@usit.uio.no](mailto:drift@usit.uio.no)).

400



401 References → max 30 references

- 402 1 World Health Organization. Global Covid-19 Vaccination Strategy in a Changing  
403 World July 2022 update. 2022 [https://www.who.int/publications/m/item/global-covid-](https://www.who.int/publications/m/item/global-covid-19-vaccination-strategy-in-a-changing-world--july-2022-update)  
404 [19-vaccination-strategy-in-a-changing-world--july-2022-update](https://www.who.int/publications/m/item/global-covid-19-vaccination-strategy-in-a-changing-world--july-2022-update) (accessed April 30,  
405 2024).
- 406 2 Antos A, Kwong ML, Balmorez T, Villanueva A, Murakami S. Unusually High Risks  
407 of COVID-19 Mortality with Age-Related Comorbidities: An Adjusted Meta-Analysis  
408 Method to Improve the Risk Assessment of Mortality Using the Comorbid Mortality  
409 Data. *Infect Dis Rep* 2021; **13**: 700–11.
- 410 3 Zhang J, Dong X, Liu G, Gao Y. Risk and Protective Factors for COVID-19  
411 Morbidity, Severity, and Mortality. *Clin Rev Allergy Immunol* 2022; **64**: 90–107.
- 412 4 Gezondheidsraad. Adviesnota Vaststelling volwassen medische risicogroepen COVID-  
413 19-vaccinatiecampagne. 2023 [https://ici.rivm.nl/sites/default/files/bestanden/COVID-](https://ici.rivm.nl/sites/default/files/bestanden/COVID-19/COVID-19-vaccinatie/Adviesnota-vaststelling-volwassen-medische-risicogroepen-covid-19-vaccinatiecampagne.pdf)  
414 [19/COVID-19-vaccinatie/Adviesnota-vaststelling-volwassen-medische-risicogroepen-](https://ici.rivm.nl/sites/default/files/bestanden/COVID-19/COVID-19-vaccinatie/Adviesnota-vaststelling-volwassen-medische-risicogroepen-covid-19-vaccinatiecampagne.pdf)  
415 [covid-19-vaccinatiecampagne.pdf](https://ici.rivm.nl/sites/default/files/bestanden/COVID-19/COVID-19-vaccinatie/Adviesnota-vaststelling-volwassen-medische-risicogroepen-covid-19-vaccinatiecampagne.pdf) (accessed April 1, 2024).
- 416 5 Norwegian Institute of Public Health. Coronavirus vaccine. ups-and-  
417 childrenadolescents-with-underlying-conditions. 2023.  
418 [https://www.fhi.no/en/id/corona/coronavirus-immunisation-programme/coronavirus-](https://www.fhi.no/en/id/corona/coronavirus-immunisation-programme/coronavirus-vaccine)  
419 [vaccine](https://www.fhi.no/en/id/corona/coronavirus-immunisation-programme/coronavirus-vaccine) (accessed April 17, 2024).
- 420 6 European Centre for Disease Prevention and Control. Core protocol for ECDC studies  
421 of COVID-19 vaccine effectiveness against hospitalisation with Severe Acute  
422 Respiratory Infection, laboratory-confirmed with SARS-CoV-2 or with seasonal  
423 influenza - Version 3.0. 2024 [https://www.ecdc.europa.eu/en/publications-data/core-](https://www.ecdc.europa.eu/en/publications-data/core-protocol-ecdc-studies-covid-19-vaccine-effectiveness-3)  
424 [protocol-ecdc-studies-covid-19-vaccine-effectiveness-3](https://www.ecdc.europa.eu/en/publications-data/core-protocol-ecdc-studies-covid-19-vaccine-effectiveness-3) (accessed March 10, 2024).
- 425 7 European Centre for Disease Prevention and Control. Core protocol for ECDC studies  
426 of COVID-19 vaccine effectiveness against hospitalisation with Severe Acute  
427 Respiratory Infection laboratory-confirmed with SARS-CoV-2, version 1.0.  
428 Stockholm, 2021.
- 429 8 Norwegian Institute of Public Health. Coronavirus vaccine. 2020.  
430 [https://www.fhi.no/en/id/corona/coronavirus-immunisation-programme/coronavirus-](https://www.fhi.no/en/id/corona/coronavirus-immunisation-programme/coronavirus-vaccine)  
431 [vaccine](https://www.fhi.no/en/id/corona/coronavirus-immunisation-programme/coronavirus-vaccine) (accessed Sept 1, 2022).
- 432 9 Gezondheidsraad. Advies Strategieën voor COVID-19-vaccinatie. 2020  
433 [https://www.gezondheidsraad.nl/documenten/adviezen/2020/11/19/strategieen-voor-](https://www.gezondheidsraad.nl/documenten/adviezen/2020/11/19/strategieen-voor-covid-19-vaccinatie)  
434 [covid-19-vaccinatie](https://www.gezondheidsraad.nl/documenten/adviezen/2020/11/19/strategieen-voor-covid-19-vaccinatie) (accessed April 1, 2024).
- 435 10 World Health Organization. International Statistical Classification of Diseases Related  
436 Health Problems 10th Revision Geneva. <https://icd.who.int/browse10/2019/en>. 2019.
- 437 11 World Health Organization. International Classification of primary care, 2nd edition  
438 (ICPC-2). [https://www.who.int/standards/classifications/other-](https://www.who.int/standards/classifications/other-classifications/international-classification-of-primary-care)  
439 [classifications/international-classification-of-primary-care](https://www.who.int/standards/classifications/other-classifications/international-classification-of-primary-care). 2024.
- 440 12 Clopper CJ, Pearson ES. The Use of Confidence or Fiducial Limits Illustrated in the  
441 Case of the Binomial. *Biometrika* 1934; **26**: 404.
- 442 13 Rijksinstituut voor Volksgezondheid en Milieu. COVID-19 vaccination. 2024;  
443 published online March. <https://www.rivm.nl/en/coronavirus-covid-19/vaccination>  
444 (accessed April 22, 2024).
- 445 14 Mereckiene J, Cotter S, Nicoll A, *et al*. Seasonal influenza immunisation in Europe.  
446 Overview of recommendations and vaccination coverage for three seasons: pre-  
447 pandemic (2008/09), pandemic (2009/10) and post-pandemic (2010/11).  
448 *Eurosurveillance* 2014; **19**. DOI:10.2807/1560-7917.ES2014.19.16.20780.



- 449 15 D'Elia L, Giaquinto A, Zarrella AF, *et al.* Hypertension and mortality in SARS-COV-  
450 2 infection: A meta-analysis of observational studies after 2 years of pandemic. *Eur J*  
451 *Intern Med* 2023; **108**: 28–36.
- 452 16 Fresán U, Guevara M, Trobajo-Sanmartín C, Burgui C, Ezpeleta C, Castilla J.  
453 Hypertension and Related Comorbidities as Potential Risk Factors for COVID-19  
454 Hospitalization and Severity: A Prospective Population-Based Cohort Study. *J Clin*  
455 *Med* 2021; **10**: 1194.
- 456 17 Ge E, Li Y, Wu S, Candido E, Wei X. Association of pre-existing comorbidities with  
457 mortality and disease severity among 167,500 individuals with COVID-19 in Canada:  
458 A population-based cohort study. *PLoS One* 2021; **16**: e0258154.
- 459 18 Wee LE, Tan JYJ, Chiew CJ, *et al.* A Nationwide Cohort Study of Delta and Omicron  
460 SARS-CoV-2 Outcomes in Vaccinated Individuals With Chronic Lung Disease. *Chest*  
461 2024; published online June. DOI:10.1016/j.chest.2024.05.017.
- 462 19 Rainer L, Bachner F, Eglau K, Ostermann H, Siebert U, Zuba M. Comorbidities and  
463 COVID-19 hospitalization, ICU admission and hospital mortality in Austria. *Wien Klin*  
464 *Wochenschr* 2022; **134**: 856–67.
- 465 20 Bedston S, Almaghrabi F, Patterson L, *et al.* Risk of severe COVID-19 outcomes after  
466 autumn 2022 COVID-19 booster vaccinations: a pooled analysis of national  
467 prospective cohort studies involving 7.4 million adults in England, Northern Ireland,  
468 Scotland and Wales. *The Lancet Regional Health - Europe* 2024; **37**: 100816.
- 469 21 Semenzato L, Botton J, Drouin J, *et al.* Chronic diseases, health conditions and risk of  
470 COVID-19-related hospitalization and in-hospital mortality during the first wave of the  
471 epidemic in France: a cohort study of 66 million people. *The Lancet Regional Health -*  
472 *Europe* 2021; **8**: 100158.
- 473 22 Prosperini L, Tortorella C, Haggiag S, Ruggieri S, Galgani S, Gasperini C. Increased  
474 risk of death from COVID-19 in multiple sclerosis: a pooled analysis of observational  
475 studies. *J Neurol* 2022; **269**: 1114–20.
- 476 23 Moreno-Torres I, Meca Lallana V, Costa-Frossard L, *et al.* Risk and outcomes of  
477 COVID-19 in patients with multiple sclerosis. *Eur J Neurol* 2021; **28**: 3712–21.
- 478 24 Orangzeb S, Watle SV, Caugant DA. Adherence to vaccination guidelines of patients  
479 with complete splenectomy in Norway, 2008–2020. *Vaccine* 2023; **41**: 4579–85.
- 480 25 Béraud G. Mathematical models and vaccination strategies. *Vaccine* 2018; **36**: 5366–  
481 72.
- 482 26 Bubar KM, Reinholt K, Kissler SM, *et al.* Model-informed COVID-19 vaccine  
483 prioritization strategies by age and serostatus. *Science (1979)* 2021; **371**: 916–21.
- 484 27 Viana J, van Dorp CH, Nunes A, *et al.* Controlling the pandemic during the SARS-  
485 CoV-2 vaccination rollout. *Nat Commun* 2021; **12**: 3674.
- 486 28 Matrajt L, Eaton J, Leung T, Brown ER. Vaccine optimization for COVID-19: Who to  
487 vaccinate first? *Sci Adv* 2021; **7**. DOI:10.1126/sciadv.abf1374.
- 488

490 **Table 1. Comparison of European and national risk classifications for severe COVID-19.** Chronic  
 491 medical condition categories based on ICD-10 and ICPC-2 codes (see **Supplementary Tables 1-3**) and  
 492 their respective risk groups for severe COVID-19 are shown. Different medical risk classifications may use  
 493 different codes for the same chronic medical condition.

| Chronic medical condition categories               | Classification |          |           |
|--|----------------|----------|-----------|
|  | European       | Dutch    | Norwegian |
| Cancer (solid organ and haematological)            | High           | High     | High      |
| Immunodeficiency                                   | High           | High     | High      |
| Organ transplant                                   | High           | High     | High      |
| Overweight and obesity                             | High           | High     | Moderate  |
| Lung disease                                       | High           | Moderate | Moderate  |
| Cardiovascular disease                             | High           | Moderate | Moderate  |
| Diabetes mellitus                                  | High           | Moderate | Moderate  |
| Hypertension                                       | High           | Low      | Low       |
| Kidney disease dialysis required                   | Moderate       | High     | High      |
| Anaemia  | Moderate       | High     | Low       |
| Kidney disease                                     | Moderate       | Moderate | High      |
| Liver disease/cirrhosis                            | Moderate       | Moderate | High      |
| Neurological disorder (without impaired breathing) | Moderate       | Moderate | High      |
| Dementia   | Moderate       | Moderate | Moderate  |
| Tuberculosis                                       | Moderate       | Moderate | Low       |
| Stroke   | Moderate       | Low      | Moderate  |
| Asplenia   | Moderate       | Low      | Low       |
| Rheumatologic disease                              | Moderate       | Low      | Low       |
| Sickle cell disease                                | Low            | High     | Low       |
| Down syndrome                                      | Low            | High     | High      |
| Neurological disorder with impaired breathing      | Low            | High     | High      |
| Reduced immunity                                   | Low            | Moderate | Moderate  |
| HIV infection                                      | Low            | Moderate | Low       |
| Cochlear implants                                  | Low            | Moderate | Low       |

**Risk due to chronic medical conditions**      High = High      Moderate = Moderate      Low = low

494

495

496 **Figure 1. Chronic conditions in the general population. A-B) National and C-D) European medical risk**  
497 classification for severe COVID-19. In all classifications, chronic medical condition categories were  
498 assigned if registered in the past six months prior to 1 January 2020, except for cancer which was assigned  
499 if registered in the prior five years. The left bars show the number and proportion of each chronic medical  
500 condition categories in the population. Orange bars indicate the high-risk chronic conditions according to  
501 the classification, while blue bars indicate moderate-risk chronic conditions. The dots represent the  
502 presence of one or more chronic medical condition categories in an individual, with the upper bars  
503 showing the combinations that occur in at least 1% of the population with chronic conditions.

504  
505 **Figure 2. Classification of the general population by risk for severe COVID-19.** Population shown as  
506 absolute numbers (top) and proportions (bottom) classified by age and risk for severe COVID-19 due to  
507 chronic medical condition categories in the **A-B) national and C-D) European** classifications.

508  
509 **Figure 3. Discordance and concordance in assigning risk status to individuals between the European**  
510 **and national classifications.** General population of **A-B) all ages, C-D) ages below 65 years, and E-F)**  
511 ages below 60 years. The discordance between the European and each national classification was  
512 calculated as the proportion of the general populations with a different risk status (off-diagonal elements).  
513 Concordance is the proportion of the population classified into the same risk group (diagonal elements).  
514 Since every individual belongs to one of the risk groups, the elements of the matrix plots add up to 100%.

515  
516 **Figure 4. Chronic conditions in the discordant population. A-B) National and C-D) European medical**  
517 risk classification for severe COVID-19. In all classifications, chronic medical condition categories were  
518 those that had been registered in the past six months prior to 1 January 2020, except for cancer which was  
519 included as a chronic medical condition if registered in the past five years preceding 1 January, 2020. The  
520 dots represent the presence of one or more chronic medical condition categories. The left bars show the  
521 number and proportion of each chronic medical condition categories in the population. Orange bars  
522 indicate the high-risk chronic conditions according to the classification, while blue bars indicate moderate-  
523 risk chronic conditions. The upper bars show the combinations of chronic conditions that occur in at least  
524 1% of the population with chronic conditions.

**Supplementary Table 1** European risk classification, ICD-10 codes<sup>6</sup>.

| <b>Risk group</b> | <b>Disease category</b>                                   | <b>ICD-10 codes</b>  |
|-------------------|---|--|
| High              | Cardiovascular disease                                    | A52.01, B37.6, B58.81, I05-09, I11, I13, I20-25, I26.9, I27, I30-51, I97.0-97.1, R00.1, T81.718A, T81.72XA, T82.817A, T82.818A, Q20-24, Q25.1-25.2, Q26.0-26.1, Q26.8, Q87.4, R01.1, R02 |
| High              | Cancer  | C00-96   |
| High              | Diabetes mellitus   | E10-11   |
| High              | Hypertension  | I10, I15, I15.1, I15.2, I15.8, I27.0, I97.3  |
| High              | Immunodeficiency or organ transplant                      | B20, D80-84, D89.8-89.9, Z21, Z94  |
| High              | Lung disease  | A15, J18.2, J40-47, J60-94, J96, J99, M34.81, M05.10   |
| High              | Obesity   | E66.01, E66.2, E66.9   |
| Moderate          | Anemia  | D50-64   |
| Moderate          | Asplenia ( <i>not available in Norwegian registries</i> ) | Q89.01, Q20.6, Z90.81  |
| Moderate          | Dementia  | F01, F03, F05, G30-31, G91, G94  |
| Moderate          | Kidney disease  | M10.30, N00-19, N20.0, N28.9   |
| Moderate          | Liver disease   | K70, K72-74, K75.4, K76.9  |
| Moderate          | Neurological disorder                                     | G70, G73.7   |
| Moderate          | Rheumatologic diseases                                    | M30-34, M35.5, M35.8-35.9, M05-06, M08, M12.00   |
| Moderate          | Stroke  | G93, I67.83, I69   |
| Moderate          | Tuberculosis  | A15-19   |

**Supplementary Table 2** Dutch risk classification, ICD-10 codes<sup>4</sup>.

| <b>Risk group</b> | <b>Disease category</b>                         | <b>ICD-10 codes</b>  |
|-------------------|---|--|
| High              | Cancer  | C00-C75, C81-86, C88, C90-96.  |
| High              | Down syndrome                                   | Q90  |
| High              | Immunodeficiency disease                        | D800.0, D81, D830.0-830.2, D83.8-83.9  |
| High              | Kidney failure (dialysis required)              | N18.5  |
| High              | Neurological disorders compromising respiration | G00-G99 in combination with R06  |
| High              | Organ transplantation                           | Z94.0-94.4, Z94.8  |
| High              | Overweight and obesity                          | E66  |
| High              | Sickle cell disease                             | D57.0-57.2   |
| Moderate          | Cardiovascular disease                          | C38, C49.3, D511, D213, I00-2, I05-9, I20-3, I30-52, Q20-8, P29.3, Z950        |
| Moderate          | Chronic kidney disease                          | N00-N39  |
| Moderate          | Cochlear implants                               | Z96.2  |
| Moderate          | Dementia  | F00-01, F03, F10.6   |
| Moderate          | Diabetes mellitus                               | E10-14   |
| Moderate          | HIV   | B20-24   |
| Moderate          | Lung disease                                    | A15-19, C30-34, C39, D86, E84, J00-99, Q30-34                                  |
| Moderate          | Neurological disorders                          | G00-99, I60-69   |
| Moderate          | Reduced immunity                                | B17.0, B18.0-18.1, C81-96, D50-89, E24-27, K50-51, K70-77, M0-14, M353, N0-39. |

**Supplementary Table 3** Norwegian risk classification, ICD-10 and ICPC-2 codes<sup>5</sup>.

| <b><u>Risk group</u></b> | <b><u>Disease category</u></b> | <b><u>ICD-10 codes</u></b>  | <b><u>ICPC-2 codes</u></b> |
|--------------------------|--------------------------------|---|----------------------------|
| High                     | Cancer                         | C0-7, C80-96, D45, D47  | -                          |
| High                     | Down Syndrome                  | Q90   | -                          |
| High                     | Immunodeficiency disease       | D80-84  | -                          |
| High                     | Organ transplantation          | Z94.0-94.4, Z94.8   | -                          |
| High                     | Neurological disorders         | G1, G20-21, G23-24, G40.5, G61.0, G70-73, F84.0-84.1, Q05.0-05.6, G80.0, G80.2-80.3 | -                          |
| High                     | Kidney failure                 | N18.3-18.5  | -                          |
| High                     | Liver disease                  | K70.4, K72  | -                          |
| Moderate                 | Diabetes mellitus              | E10-14  | T89-90                     |
| Moderate                 | Lung disease                   | E84, J41-J47, J84, J98  | R95-96                     |
| Moderate                 | Overweight and obesity         | E66   | T82                        |
| Moderate                 | Cardiovascular disease         | I05-09, I2, I31-32, I34-37, I39-43, I46, I48-50                                     | K74-78, K82-83, K87        |
| Moderate                 | Stroke                         | I60-64, I69.1-69.4, I69.8, I69.0  | K90-91                     |
| Moderate                 | Dementia                       | F0, G30-31  | P70                        |
| Moderate                 | Reduced immunity               | G35, M05-09, M13-14, K50-51   | -                          |

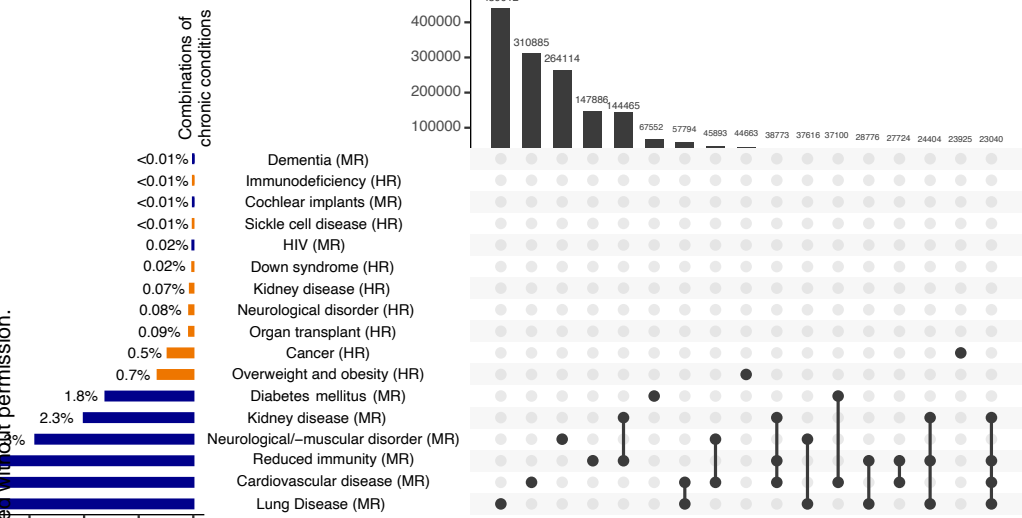
**Supplementary Figure 1. Chronic conditions in the discordant population aged <60 years. A-B)**

National and C-D) European medical risk classification for severe COVID-19. In all classifications, chronic medical condition categories were those that had been registered in the past six months prior to 1 January 2020, except for cancer which was included as a chronic medical condition if registered in the past five years preceding 1 January, 2020. The dots represent the presence of one or more chronic medical condition categories. The left bars show the number and proportion of each chronic medical condition categories in the population. Orange bars indicate the high-risk chronic conditions according to the classification, while blue bars indicate moderate-risk chronic conditions. The upper bars show the combinations of chronic conditions that occur in at least 1% of the population with chronic conditions.

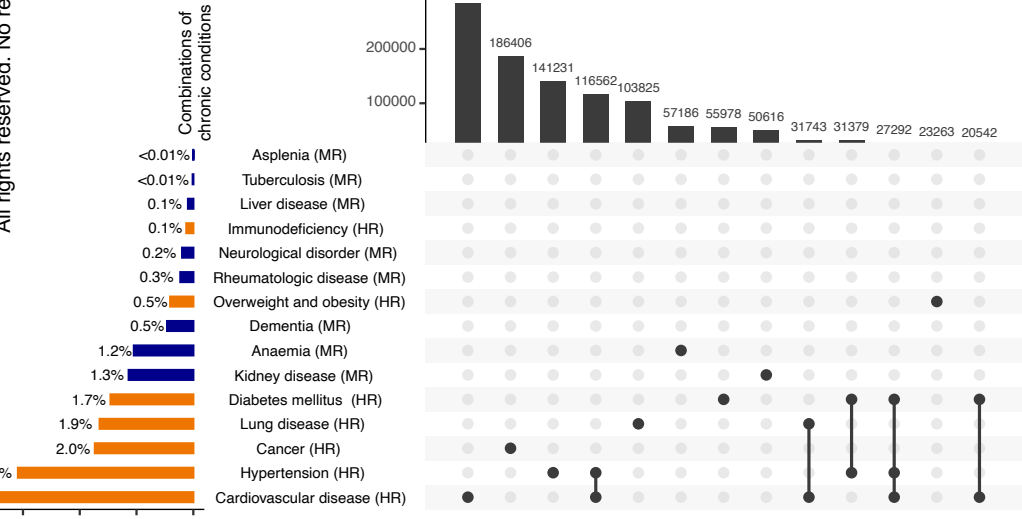
**Supplementary Figure 2. Chronic conditions in the discordant population aged <65 years. A-B)**

National and C-D) European medical risk classification for severe COVID-19. In all classifications, chronic medical condition categories were those that had been registered in the past six months prior to 1 January 2020, except for cancer which was included as a chronic medical condition if registered in the past five years preceding 1 January 2020. The dots represent the presence of one or more chronic medical condition categories. The left bars show the number and proportion of each chronic medical condition categories in the population. Orange bars indicate the high-risk chronic conditions according to the classification, while blue bars indicate moderate-risk chronic conditions. The upper bars show the combinations of chronic conditions that occur in at least 1% of the population with chronic conditions.

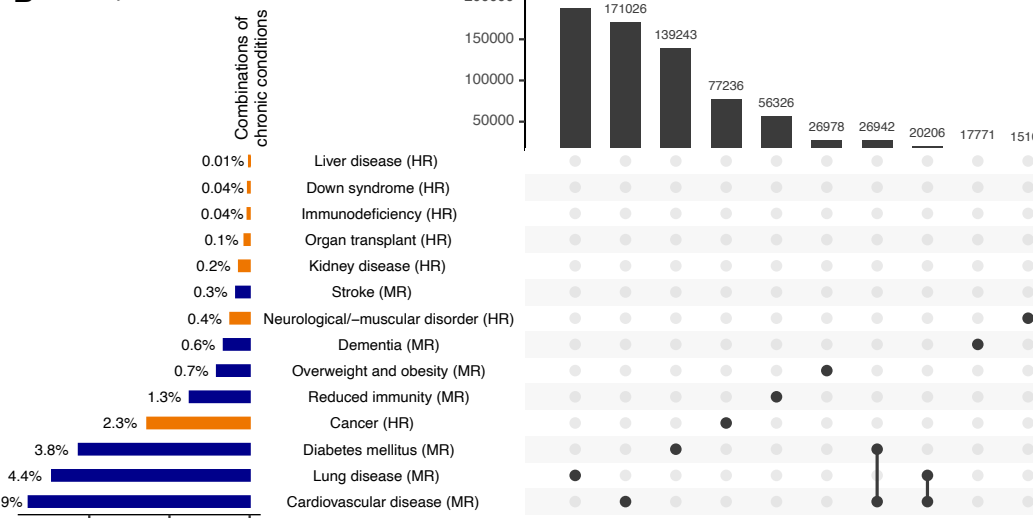
### A The Netherlands, National classification



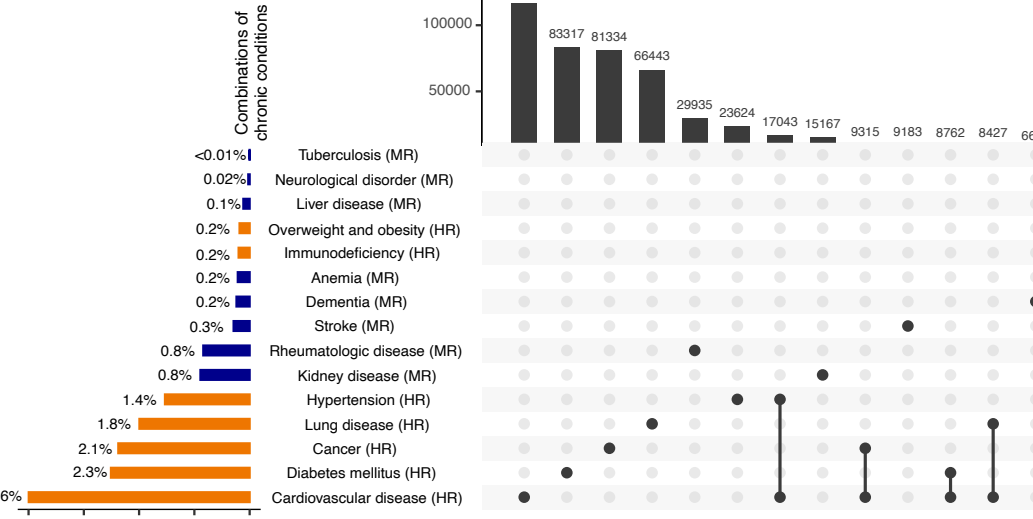
### The Netherlands, European classification



### B Norway, National classification



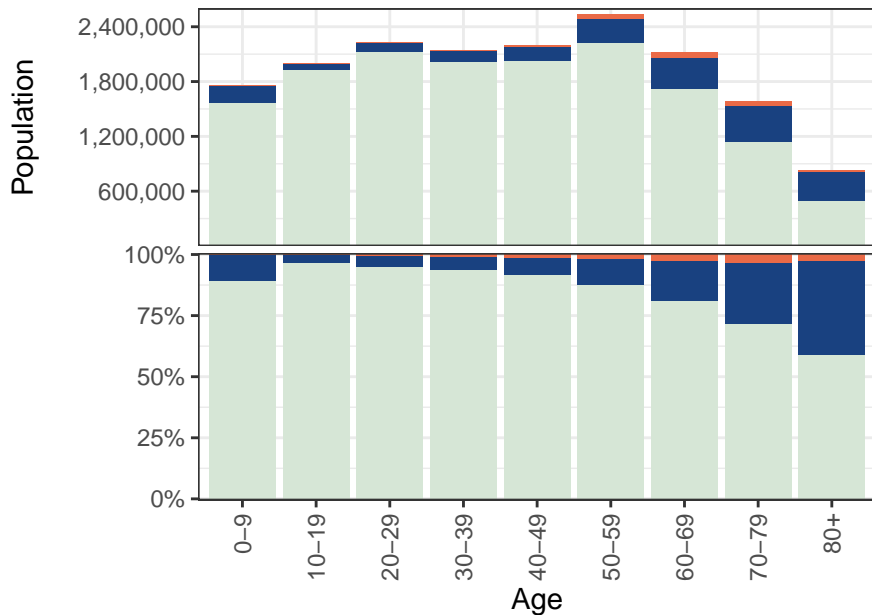
### D Norway, European classification



Risk due to chronic medical conditions ■ High ■ Moderate ■ Low

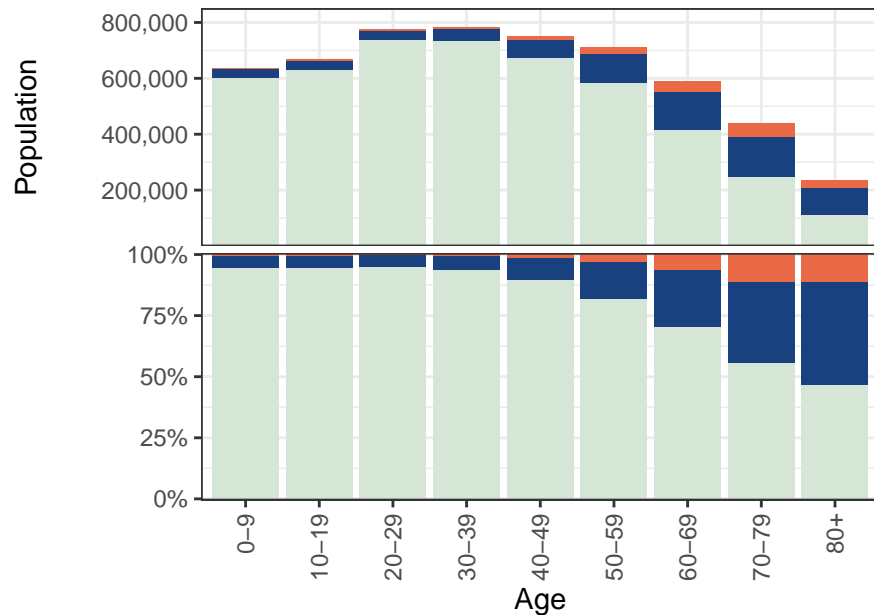
**A**

The Netherlands, National classification



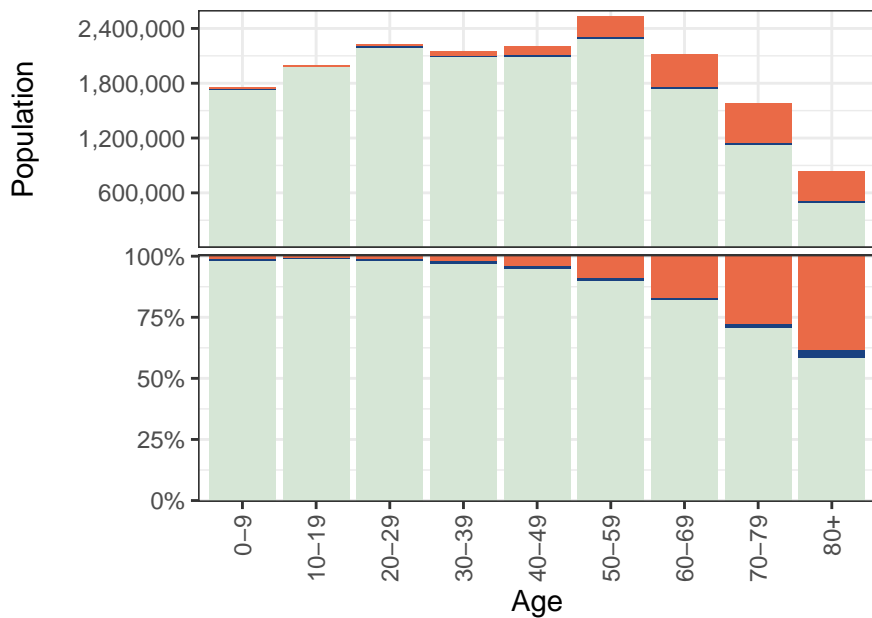
**B**

Norway, National classification



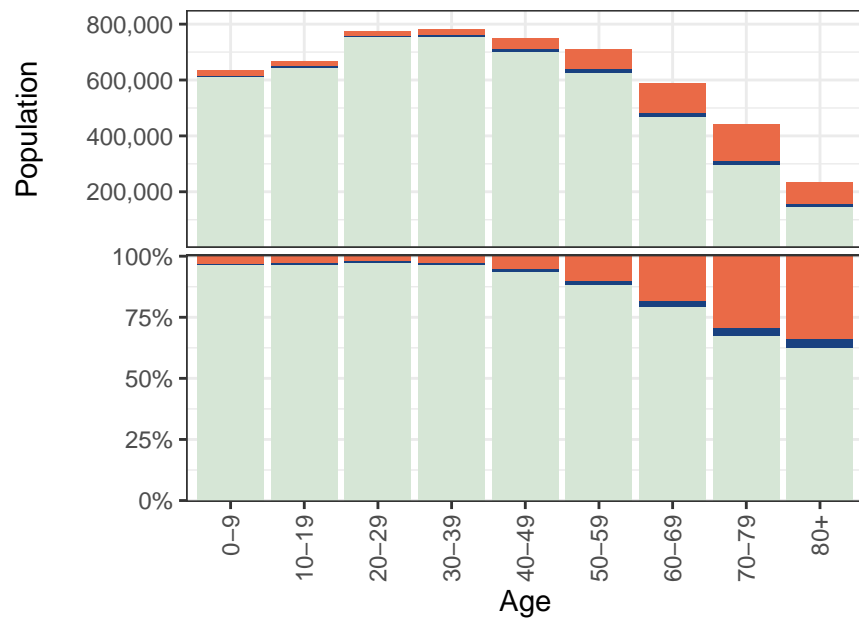
**C**

The Netherlands, European classification



**D**

Norway, European classification





**A** The Netherlands

|                         |          |             |              |              |              |
|-------------------------|----------|-------------|--------------|--------------|--------------|
| European classification | High     | 1.3%        | <b>6.4%</b>  | 1.3%         | <b>9.0%</b>  |
|                         | Moderate | <b>0.0%</b> | 0.9%         | <b>0.0%</b>  | <b>1.0%</b>  |
|                         | Low      | <b>0.2%</b> | <b>4.1%</b>  | 85.8%        | <b>90.1%</b> |
|                         | Total    | <b>1.5%</b> | <b>11.3%</b> | <b>87.2%</b> | 100%         |
|                         |          | High        | Moderate     | Low          | Total        |
| National classification |          |             |              |              |              |

Discordance = 12.0% (95% CI 12.0–12.1%)  
 Concordance = 88.0% (95% CI 87.9-88.0%)

**B** Norway

|                         |          |             |              |              |              |
|-------------------------|----------|-------------|--------------|--------------|--------------|
| European classification | High     | 2.5%        | <b>6.1%</b>  | <b>0.7%</b>  | <b>9.2%</b>  |
|                         | Moderate | <b>0.1%</b> | 0.6%         | <b>0.6%</b>  | <b>1.3%</b>  |
|                         | Low      | <b>0.4%</b> | <b>6.0%</b>  | 83.1%        | <b>89.5%</b> |
|                         | Total    | <b>3.0%</b> | <b>12.7%</b> | <b>84.4%</b> | 100%         |
|                         |          | High        | Moderate     | Low          | Total        |
| National classification |          |             |              |              |              |

Discordance = 13.8% (95% CI 13.8–13.9%)  
 Concordance = 86.2% (95% CI 86.1-86.2%)

**C** The Netherlands, aged <65

|                         |          |             |             |              |              |
|-------------------------|----------|-------------|-------------|--------------|--------------|
| European classification | High     | 0.8%        | <b>2.8%</b> | <b>0.7%</b>  | <b>4.4%</b>  |
|                         | Moderate | <b>0.0%</b> | 0.7%        | <b>0.0%</b>  | <b>0.7%</b>  |
|                         | Low      | <b>0.2%</b> | <b>4.2%</b> | 90.5%        | <b>94.9%</b> |
|                         | Total    | <b>1.1%</b> | <b>7.7%</b> | <b>91.3%</b> | 100%         |
|                         |          | High        | Moderate    | Low          | Total        |
| National classification |          |             |             |              |              |

Discordance = 8.0% (95% CI 8.0–8.0%)  
 Concordance = 92.0% (95% CI 92.0-92.0%)

**D** Norway, aged <65

|                         |          |             |             |              |              |
|-------------------------|----------|-------------|-------------|--------------|--------------|
| European classification | High     | 1.1%        | <b>3.6%</b> | <b>0.5%</b>  | <b>5.3%</b>  |
|                         | Moderate | <b>0.1%</b> | 0.4%        | <b>0.5%</b>  | <b>1.0%</b>  |
|                         | Low      | <b>0.3%</b> | <b>4.4%</b> | 89.1%        | <b>93.8%</b> |
|                         | Total    | <b>1.5%</b> | <b>8.4%</b> | <b>90.1%</b> | 100%         |
|                         |          | High        | Moderate    | Low          | Total        |
| National classification |          |             |             |              |              |

Discordance = 9.4% (95% CI 9.4–9.4%)  
 Concordance = 90.6% (95% CI 90.6-90.6%)

**E** The Netherlands, aged <60

|                         |          |             |             |              |              |
|-------------------------|----------|-------------|-------------|--------------|--------------|
| European classification | High     | 0.7%        | <b>2.2%</b> | <b>0.6%</b>  | <b>3.5%</b>  |
|                         | Moderate | <b>0.0%</b> | 0.7%        | <b>0.0%</b>  | <b>0.7%</b>  |
|                         | Low      | <b>0.2%</b> | <b>4.2%</b> | 91.4%        | <b>95.8%</b> |
|                         | Total    | <b>1.0%</b> | <b>7.0%</b> | <b>92.0%</b> | 100%         |
|                         |          | High        | Moderate    | Low          | Total        |
| National classification |          |             |             |              |              |

Discordance = 7.3% (95%CI 7.2–7.3%)  
 Concordance = 92.7% (95% CI 92.7-92.8%)

**F** Norway, aged <60

|                         |          |             |             |              |              |
|-------------------------|----------|-------------|-------------|--------------|--------------|
| European classification | High     | 0.9%        | <b>3.2%</b> | <b>0.4%</b>  | <b>4.5%</b>  |
|                         | Moderate | <b>0.0%</b> | 0.3%        | <b>0.5%</b>  | <b>0.9%</b>  |
|                         | Low      | <b>0.3%</b> | <b>4.0%</b> | 90.4%        | <b>94.6%</b> |
|                         | Total    | <b>1.2%</b> | <b>7.5%</b> | <b>91.3%</b> | 100%         |
|                         |          | High        | Moderate    | Low          | Total        |
| National classification |          |             |             |              |              |

Discordance = 8.4% (95% CI 8.4–8.5%)  
 Concordance = 91.6% (95% CI 91.5-91.6%)

