

dr bl  
sp

*For Christian Schools*

th sh ch

# SPELLING

By Sound and Structure

ask  
asked  
asking

star  
stars

riv er  
a round

2

*Rod and Staff Publishers, Inc.*

*For Christian Schools*

# SPELLING

By Sound and Structure

2

**Rod and Staff Publishers, Inc.**

P.O. Box 3, Hwy. 172

Crockett, Kentucky 41413

Telephone: 606-522-4348

## Acknowledgments

We acknowledge the everlasting God, the Lord, beside whom there is none else. His blessing made the writing and publishing of this book possible.

To the following persons, we express gratitude: the writer, Rachel K. Weaver; the editor, Marvin Eicher; the reviewers, Julia Torkelson, Joan Wenger, Isaac Martin, and Loyal Troyer. For the illustrating, appreciation is given to Edith Burkholder.

We are indebted to numerous people who assisted in the work by helping in related projects along the way, by providing finances, by encouraging those working most directly with it, and by interceding in prayer for the work.

We are grateful to the writers and publishers of the materials we consulted for reference in preparing this book—various word lists, reports on research, instruction in teaching spelling, and other spelling series.

—*The Publishers*

**Copyright 1985**

**By Rod and Staff Publishers, Inc.  
Crockett, Kentucky 41413**

Printed in U.S.A.

ISBN 978-07399-0571-5

Catalog no. 16221

# Table of Contents

Lesson	Page
1. Beginning Sounds . . . . .	4
2. Second Sounds . . . . .	6
3. Beginning Sounds . . . . .	8
4. Ending Sounds . . . . .	10
5. Beginning Consonant Blends . . . . .	12
6. Review . . . . .	14
7. Short Vowel Sounds . . . . .	16
8. Beginning Consonant Digraphs . . . . .	18
9. Ending Consonant Digraphs . . . . .	20
10. Short Vowel Sounds . . . . .	22
11. Long Vowel Sounds . . . . .	24
12. Review . . . . .	26
13. Plural Nouns . . . . .	28
14. Plural Nouns . . . . .	30
15. Verbs With the Suffix <b>-ed</b> . . . . .	32
16. Verbs With the Suffix <b>-ing</b> . . . . .	34
17. Syllables . . . . .	36
18. Review . . . . .	38
19. Long Vowel Sounds . . . . .	40
20. Long Vowel Sounds . . . . .	42
21. Spelling /oo/ and /ōō/ . . . . .	44
22. Verbs With the Suffix <b>-s</b> . . . . .	46
23. Spelling /èr/ . . . . .	48
24. Review . . . . .	50
25. Spelling /k/ . . . . .	52
26. Spelling /s/ . . . . .	54
27. Spelling /hw/ and /w/ . . . . .	56
28. Words That Compare . . . . .	58
29. Words With Double Consonants . . . . .	60
30. Review . . . . .	62
31. Plural Nouns . . . . .	64
32. Verbs With the Suffixes <b>-ed</b> and <b>-ing</b> . . . . .	66
33. Syllables . . . . .	68
34. Review . . . . .	70

# LESSON 1

cap  
ten  
days  
word  
rain  
big  
hat  
sick  
fat  
yes  
cake  
pig



## PART A

Write spelling words in the blanks.

1. It has four legs.
2. It falls from the sky.
3. It is good to eat.
4. It is one more than nine.
5. There are seven of these in one week.
6. It means the opposite of **no**.

1. \_\_\_\_\_ 4. \_\_\_\_\_

2. \_\_\_\_\_ 5. \_\_\_\_\_

3. \_\_\_\_\_ 6. \_\_\_\_\_

7. Read this sentence.

The boy wears a \_\_\_\_\_ on his head.

We could put spelling words in the sentence.

The boy wears a **cap** on his head.

The boy wears a **hat** on his head.

What spelling words could fit in this sentence?



We saw a \_\_\_\_\_ dog.

\_\_\_\_\_  
\_\_\_\_\_  
\_\_\_\_\_

**PART B**

1. Say the names of these pictures. Listen for the first sound in each word.



Which spelling word begins with the same sound that begins  and ?

\_\_\_\_\_

\_\_\_\_\_

\_\_\_\_\_

The letter **b** spells the first sound.

2. Say the name of each picture. Write the spelling word that begins with the same sound. On the short line write the letter that spells the first sound.



\_\_\_\_\_

\_\_\_\_\_



\_\_\_\_\_



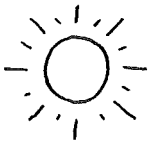
\_\_\_\_\_



\_\_\_\_\_

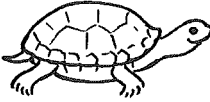


\_\_\_\_\_



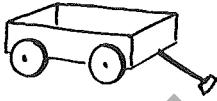
\_\_\_\_\_

\_\_\_\_\_



\_\_\_\_\_

\_\_\_\_\_



\_\_\_\_\_

\_\_\_\_\_



\_\_\_\_\_

\_\_\_\_\_

3. Write the spelling words that name these pictures.



\_\_\_\_\_

\_\_\_\_\_



\_\_\_\_\_

\_\_\_\_\_

What letter spells the first sound?

\_\_\_\_\_

\_\_\_\_\_

4. Write **ten**. Then write other words by changing the first letter to **m**, **p**, and **h**.

\_\_\_\_\_

\_\_\_\_\_

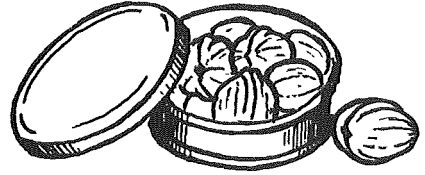
\_\_\_\_\_

\_\_\_\_\_

\_\_\_\_\_

# LESSON 2

top  
can  
bell  
nut  
tip  
man  
but  
yet  
doll  
cat  
bill  
his



## PART A

Write spelling words in the blanks.

1. It has a shell on the outside.
2. The teacher rings this.
3. A bird uses this to get his food.
4. You write with this part of the pencil.
5. We can buy paint in this at the store.
6. It means the opposite of **bottom**.

1. \_\_\_\_\_

4. \_\_\_\_\_

2. \_\_\_\_\_

5. \_\_\_\_\_

3. \_\_\_\_\_

6. \_\_\_\_\_

7. Which spelling word fits in this sentence?

Joseph feeds \_\_\_\_\_ dog every day.

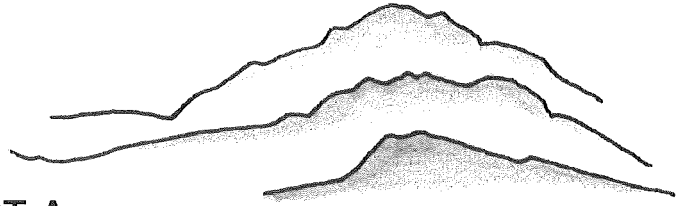
8. What spelling words could fit in this sentence?

The \_\_\_\_\_ has two shining eyes.

\_\_\_\_\_

\_\_\_\_\_

# LESSON 28



## PART A

Write spelling words that mean the opposite of these words.

- |           |           |
|-----------|-----------|
| 1. softer | 5. lowest |
| 2. lower  | 6. worse  |
| 3. light  | 7. worst  |
| 4. cooler | 8. less   |

higher  
highest  
bigger  
dark

warmer  
harder  
larger  
much  
more  
most  
better  
best

1. \_\_\_\_\_ 5. \_\_\_\_\_

2. \_\_\_\_\_ 6. \_\_\_\_\_

3. \_\_\_\_\_ 7. \_\_\_\_\_

4. \_\_\_\_\_ 8. \_\_\_\_\_

9. Which words mean the opposite of **smaller**?

\_\_\_\_\_  
\_\_\_\_\_

10. The Bible is the \_\_\_\_\_ Book of all.

11. We love God \_\_\_\_\_ of all.

\_\_\_\_\_  
\_\_\_\_\_

10. \_\_\_\_\_ 11. \_\_\_\_\_



**PART B**

1. Write **warm** and **hard**. Beside them write spelling words that are forms of these words.

\_\_\_\_\_

\_\_\_\_\_

\_\_\_\_\_

\_\_\_\_\_

\_\_\_\_\_

What two letters are added as a suffix to **warm** and **hard**?

\_\_\_\_\_

\_\_\_\_\_

2. What spelling words are forms of **high**?

\_\_\_\_\_

\_\_\_\_\_

What suffixes are added to **high**?

\_\_\_\_\_

\_\_\_\_\_

3. Write **dark**. Then write other words by adding **er** and **est**.

\_\_\_\_\_

\_\_\_\_\_

\_\_\_\_\_

\_\_\_\_\_

4. Write **big**. Write the spelling word that is a form of **big**.

\_\_\_\_\_

\_\_\_\_\_

Circle **g** and **gg** in the words.

5. Write **large**. Write the spelling word that is a form of **large**.

\_\_\_\_\_

\_\_\_\_\_

Circle the **e** in **large** that you dropped to add **er**.

6. Write **much**, **more**, and **most**.

\_\_\_\_\_

\_\_\_\_\_

Our town had \_\_\_\_\_ rain.

Frytown had \_\_\_\_\_ rain than we did. Of all the places we heard about, Oakland had the

\_\_\_\_\_

\_\_\_\_\_

\_\_\_\_\_ rain.

7. Write **better** and **best**.

\_\_\_\_\_

Love is \_\_\_\_\_ than gold.

\_\_\_\_\_

Jesus is our \_\_\_\_\_ friend.

Sample

2

ISBN 978-07399-0571-5



9 780739 905715