

# Corporate Profile

# Corporate Profile

---

Corporate Name	: NIPPON TELEGRAPH AND TELEPHONE EAST CORPORATION
Head Office	: 19-2,Nishi-shinjuku 3-chome, Shinjuku, Tokyo 163-8019, Japan Tel : +81-3-5359-5111
Date of Establishment	: July 1,1999
Business	: Regional telecommunications services <sup>*1</sup> in the eastern areas of Japan <sup>*2</sup> , business pertaining to these services, business activities to achieve the purpose of the company, business activities to utilize the company's resources
Paid-In Capital	: 335 billion yen
Shareholder	: NIPPON TELEGRAPH AND TELEPHONE CORPORATION(100%)
Total Employees	: 4,950 (NIPPON TELEGRAPH AND TELEPHONE EAST CORPORATION GROUP COMPANY: 35,500) <sup>*3</sup>

<sup>\*1</sup> Telephone Services(intra-prefectural communications), Integrated Digital Communications Services(Basic mode, intra-prefectural communications), Leased Circuit Services(intra-prefectural communications),and so on

<sup>\*2</sup> Hokkaido, Aomori, Iwate, Miyagi, Akita, Yamagata, Fukushima, Ibaraki, Tochigi, Gunma, Saitama, Chiba, Tokyo, Kanagawa, Niigata, Yamanashi and Nagano

<sup>\*3</sup> As of March 31, 2023

## Directors and Auditors

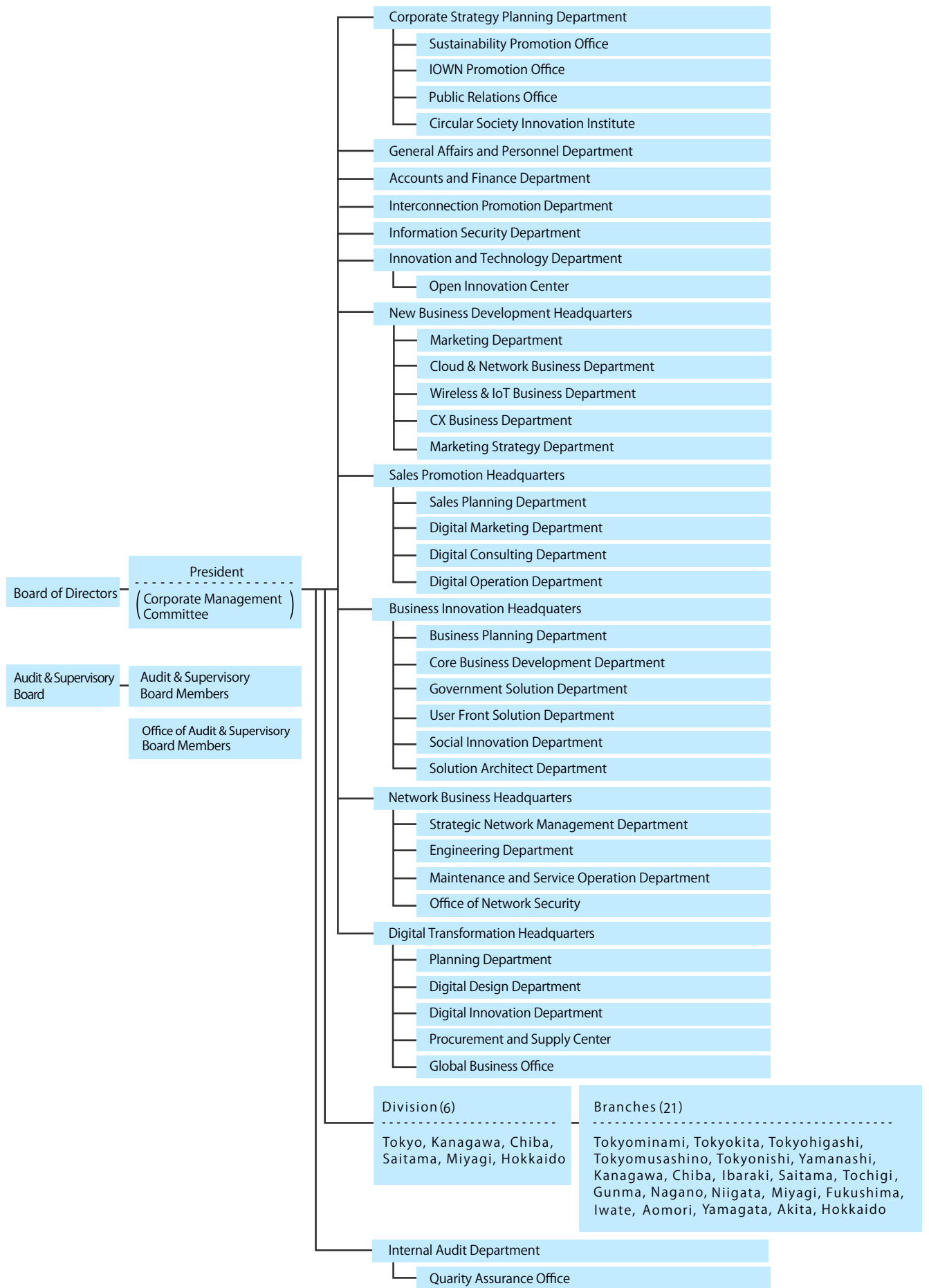
---

President, Executive Director	: Naoki Shibutani
President, Executive Officer	
Senior Executive Vice President, Representative Director	: Riaki Hoshino
Senior Executive Vice President, Executive Officer	: Toshimasa Kumagai
Senior Vice President, Executive Officer	: Yusaku Shima
Senior Vice President	: Yoshinori Kanehana Makiko Sekine
Audit & Supervisory Board Member	: Kosuke Nagano Tetsuya Kitagawa Machiko Sakai
Managing Executive Officer	: Takashi Ebihara
Executive Officer	: Yasushi Shimazu Taigo Ichikawa Takashi Abe Katsunori Shigehara Sakiko Kato Tomoko Aihara Chinatsu Kataoka Hirofumi Suto Akinobu Matsui Koichi Suzuki Takaharu Kitajima Shingo Ishida Shinya Momose Tadayuki Yamaguchi



(As of June 21, 2024)

# Organization Chart



( As Of April 1, 2024 )

## Non-consolidated Operating Results

(Billions of yen)

	FY2022	FY2023
Operating revenues	1,544.9	1,532.7
Operating expenses	1,307.7	1,318.0
Operating income	237.3	214.7
Recurring profit	255.6	229.5
Income before income taxes	255.6	285.7
Net income	185.3	208.6

## Non-consolidated Financial Position

(Billions of yen)

	March 31, 2023	March 31, 2024
Fixed assets	2,850.9	2,868.4
Current assets	593.5	548.3
Total assets	3,444.4	3,416.7
Long-term liabilities	677.0	518.2
Current liabilities	588.3	694.2
Total liabilities	1,265.3	1,212.4
Interest-bearing debt*	218.0	218.0
Shareholder equity	2,179.1	2,204.3
Total liabilities and shareholder equity	3,444.4	3,416.7

\* Partial listing only